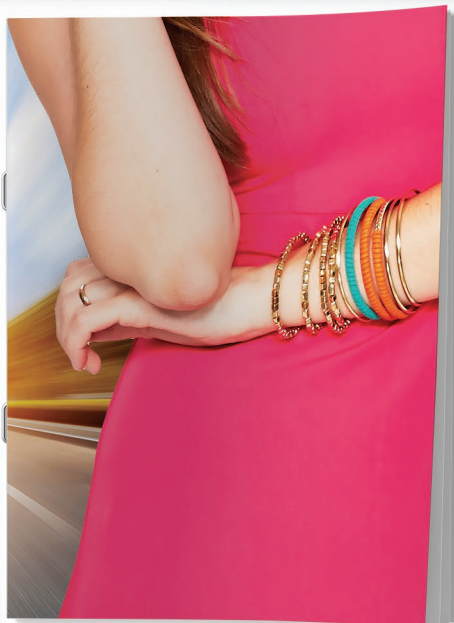
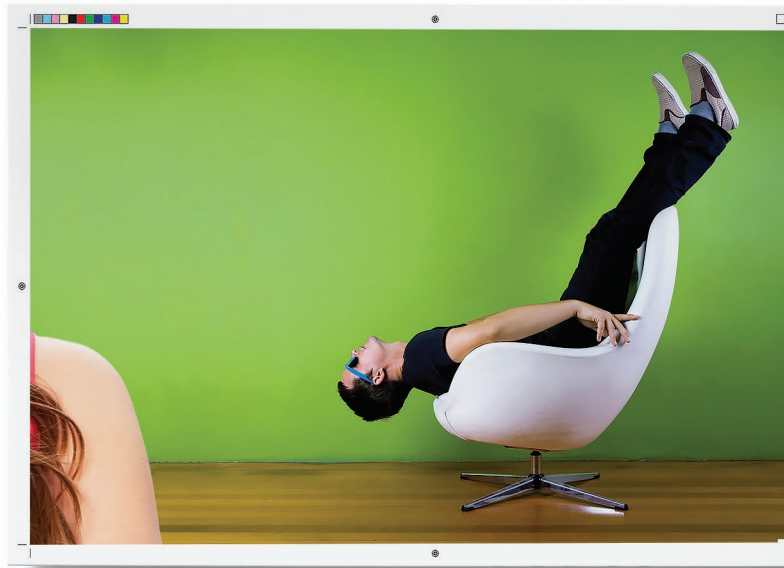
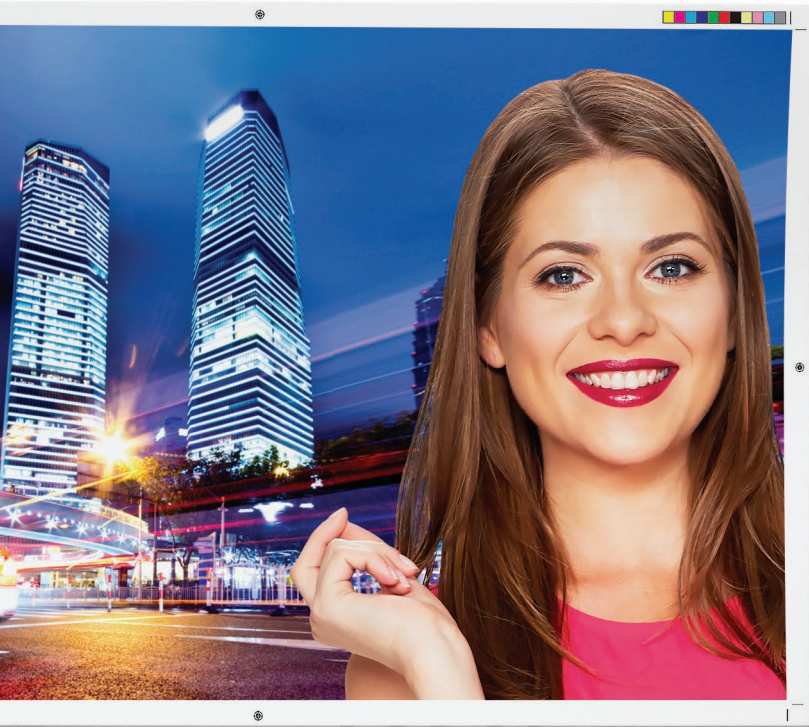


COLOR DIGITAL PRESS



CREATIVITY AND INNOVATION. SIMPLY STUNNING.



AT-A-GLANCE



imagePRESS C60 shown with optional accessories.

AMAZING COLOR

- High-resolution imaging at 2400 x 2400 dpi with R-VCSEL laser technology
- Vibrant images on a wide variety of media with CV Toner and Advanced Transfer Belt
- Consistent, stable output with automatic calibration for reproducible proofs and comps
- Professional color matching tools for accurate simulations and predictable reproduction of colors
- Precise registration with the Compact Registration Module

CREATIVE CHOICES

- Attention-getting stock variety, including thick, thin, uncoated, coated, textured, and recycled, in weights up to 110 lb. Cover (300 gsm)
- Canon's Gloss Optimization technology tailors the gloss level of the toner image so final output can give the true appearance of the media chosen for the desired creative expression
- Up to 7,650-sheet feeding capacity with up to six different sources
- Array of optional in-line, post-processing accessories for the finishing touch of presentation pieces and samples

NOW, ADVERTISING AGENCIES, DESIGN STUDIOS, AND PRODUCTION DEPARTMENTS HAVE A GREAT PARTNER—THE imagePRESS C60 COLOR DIGITAL PRESS.

EMPOWER CREATIVITY

Impress clients with compelling, vibrant images. Brilliant advances in design deliver precise, 2400-dpi resolution, highly accurate registration, and truly consistent output. A wide color gamut helps ensure exacting color matches to brand colors and original art.

The imagePRESS C60 color digital press brings ideas to life in brilliant color. And, when combined with in-line finishing, you can efficiently produce layout proofs, press-proof comps, packaging markups, and more.

MANAGE COLOR SIMPLY

Graphic professionals will appreciate the advanced color management tools of the server-type imagePRESS Server F200 and the embedded imagePRESS Server G100, the first DFEs built on EFI's Fiery® FS150 Pro platform. Accurately match color to other presses and optimize workflows with true simulations that yield predictable color results.

MEET CRITICAL DEADLINES

The imagePRESS C60 is significantly faster than its predecessor, so jobs are rapidly output. With fast warm-up and first-copy-out times, you'll see results quickly. Reliable paper-feeding and advanced fusing technologies keep productivity high, so every deadline is met with ease.

PROTECT THE ENVIRONMENT

This press offers the thoughtful, eco-conscious solutions you've come to expect from Canon. Meeting ENERGY STAR® standards, rated EPEAT Gold, and RoHS compliant, they'll help you minimize your organization's environmental impact and decrease energy costs.

BRING YOUR IDEAS TO LIFE

Canon truly understands the creative process and the production environment. That's why you can count on its solutions to meet your complex color demands with high efficiency and reliability. It's a winning combination.



READY WHEN YOU ARE

- Output speeds of up to 60 impressions per minute (color and B/W)
- Automatic duplexing on up to 110 lb. Cover (300 gsm)
- Maintains rated speed on uncoated stocks up to 80 lb. Cover (220 gsm)
- Readily available with fast warm-up and first-print-out times
- imagePRESS Server F200 and imagePRESS Server G100 deliver the quality performance studios need

SMALL AND SCALABLE

- Base configuration with small footprint to fit even into tight spaces
- Modular design allows configuration choice that best fits your needs
- Choice of external server or embedded controller

THE GREENER WAY TO PRINT

- Can help reduce organizations' environmental impact and energy cost
- Meets ENERGY STAR standards
- Rated EPEAT Gold
- Compliant with RoHS
- Recyclable toner bottles
- No VOCs in consumables

A POWERFUL WAY TO WORK

SCALABLE TO YOUR NEEDS

Ideal for design professionals in the creative community, packaging design and architectural firms, the scalable configuration of the imagePRESS C60 color digital press offers various finishing and paper-feeding options.

1 STAPLE FINISHER-T1 AND BOOKLET FINISHER-T2

Corner- or two-point staple up to 50 sheets or saddle-stitch* up to 64-page booklets. Stack and finish sheets in Letter, Legal, 11" x 17", and 12" x 18" sizes.

2 PUNCH UNIT

Optional 2/3-hole punch unit for Staple Finisher-T1 and Booklet Finisher-T2.

3 FINISHER-AM1 AND SADDLE FINISHER-AM2

Corner- or two-point staple up to 100 sheets or saddle-stitch* up to 100-page booklets. Stack and finish standard and custom paper sizes up to 13" x 19.2". An external side jogger keeps paper in neat stacks, and an optional 2/3-hole puncher is also available.

4 PROFESSIONAL PUNCH UNIT

Perfect for presentations, this module offers numerous standard and customized die patterns to take some of the manual labor out of the binding process.

5 OUTPUT TRAY

Use the output tray to conveniently catch up to 250 flat sheets of standard and specialty stocks. Sheets stay smooth and even, ready for your client presentation.

6 STACK BYPASS

Quickly produce proofs or presentation slicks on special paper stocks. The Stack Bypass holds up to 100 sheets in sizes up to 13" x 19", without reloading the paper decks.

7 POD DECK LITE

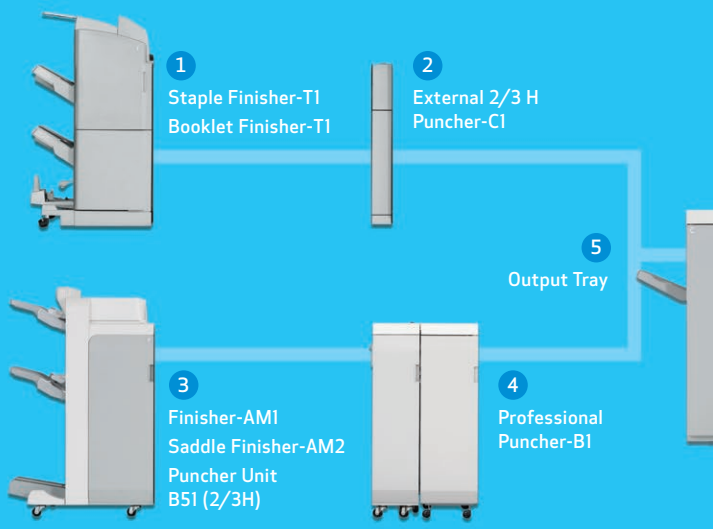
The POD Deck Lite offers a 3,500-sheet capacity and maximum size of 13" x 19.2". Accommodates all supported media weights and types, including envelopes.

8 MULTI-DRAWER PAPER DECK

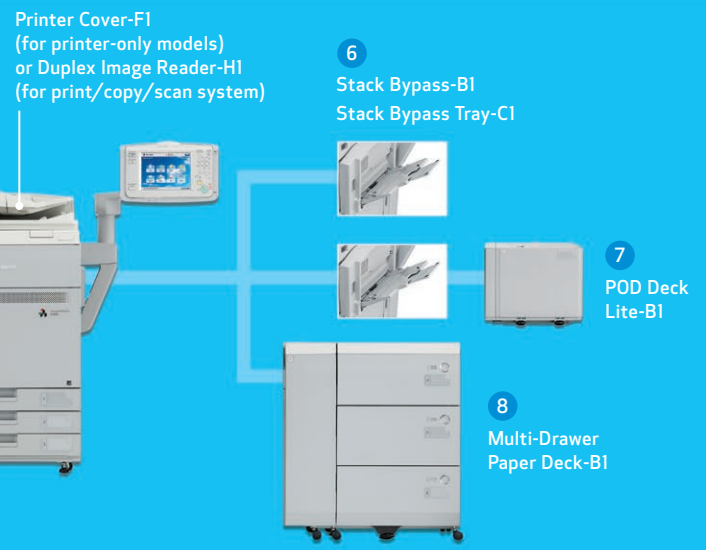
Three paper drawers offer a 6,000-sheet capacity and maximum size of 13" x 19.2". All drawers accommodate all supported media weights and types except envelopes.

Note: Feeding and finishing capacity based on 20 lb. Bond paper.
*Available only on Booklet Finisher or Saddle Finisher.

FINISHING OPTIONS



FEEDING OPTIONS



imagePRESS SERVER F200/G100



Fiery technology for outstanding image quality and automated workflows.

EFFICIENT JOB MANAGEMENT

An intuitive print management interface for Fiery servers, the Command WorkStation® 5.5 centralizes and helps simplify job management. Users can monitor and direct jobs, automate workflows, and preview and adjust documents.

WORK ACROSS PLATFORMS

These imagePRESS Servers integrate smoothly with your various prepress workflows, as well as select, third-party software and EFI™ solutions.

SPOT-ON™ COLOR MATCHING

The powerful Spot-On utility helps take the guesswork out of color matching, offering an intuitive interface that makes it fast and easy to define or modify spot colors. It's an ideal way to reproduce corporate or brand colors precisely.

DIRECT PRINTING FROM APPLE® MOBILE DEVICES

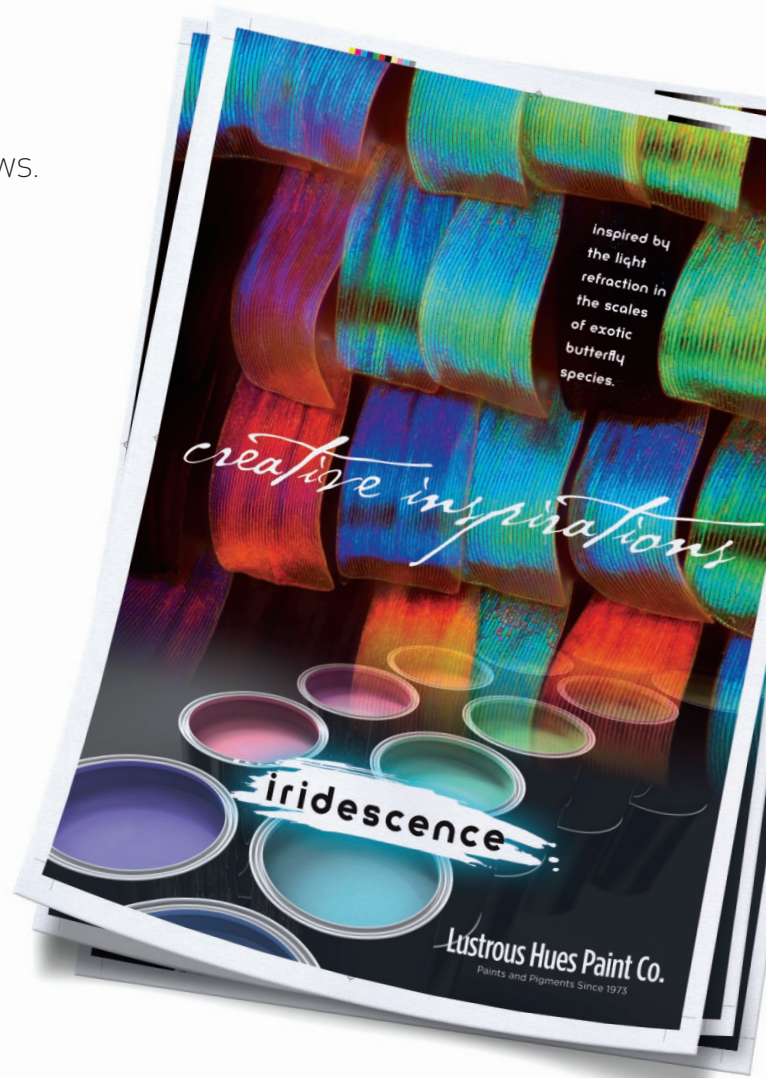
Enhance press accessibility with the power to print directly from Apple iPad® and iPhone® devices.* Using an enterprise's wireless connection, users can securely print from the native print feature of a mobile device.

CANON PRESS CONSOLE

The Canon Press Console offers easy access to operator settings such as the media library, press stability controls, and output appearance settings.

FS150 PRO PLATFORM

The Canon imagePRESS Server F200 and G100 are the first digital front-ends built on EFI's Fiery FS150 Pro platform. FS150 Pro offers fast processing, superb image quality, extensive imaging features, and simple, automated workflows.



imagePRESS Server F200



imagePRESS Server G100

* Supported on Apple devices running iOS 4.2 or later.

CREATIVE POSSIBILITIES

PRESENT YOUR IDEAS AND CONCEPTS IN THE BEST LIGHT

VERSATILITY

Thanks to the combination of the CV Toner's smooth particles and low melting point with the Advanced Image Transfer belt, reliable color registration and toner adhesion for vibrant images are achieved on all supported stocks.

The imagePRESS C60 color digital press can run a range of paper stocks at weights from 14 lb. Bond up to 110 lb. Cover (300 gsm) in gloss, uncoated, and vellum finishes.

GLOSS OPTIMIZATION

Output creative concepts and production proofs on your house stock or the media best supporting your design intent. Unique imagePRESS Gloss Optimization Technology allows images to closely match the gloss levels of the media specified. Fine papers with smooth, rough, or textured surfaces, such as eggshell and felt, can add a special tactile experience to your presentation material for a longer-lasting impression.

FINISHING TOUCHES

True-size comps and proofs can be produced on sheet sizes up to 13" x 19.2" and supported envelopes from #10 to 10" x 13". Use the output tray to conveniently catch flat sheets on special stocks. Sheets stay smooth and even, ready for your client presentation. Easily create saddle-stitched brochures and programs with the in-line saddle finisher. Or, produce ready-to-bind, lay-flat presentations with the in-line professional puncher.



BEAUTIFULLY PRODUCTIVE

IMPRESSIVE PREDICTABILITY



REAL-TIME CALIBRATION

With automatic, real-time calibration and tools to reduce calibration time, the imagePRESS C60 delivers high-quality, repeatable, predictable output with minimal operator intervention.



ADVANCED FEEDING TECHNOLOGIES*

Keep work moving smoothly when you need it with advanced paper feeding technologies. Double-feed detection, Air Suction, Air Separation, and Air Assist features provide reliable, accurate paper feeding of all supported stocks, including coated papers.



ACCURATE REGISTRATION

Combined with the imagePRESS C60's self-centering drawers, the Compact Registration Module helps deliver accurate, front-to-back registration, sheet after sheet.



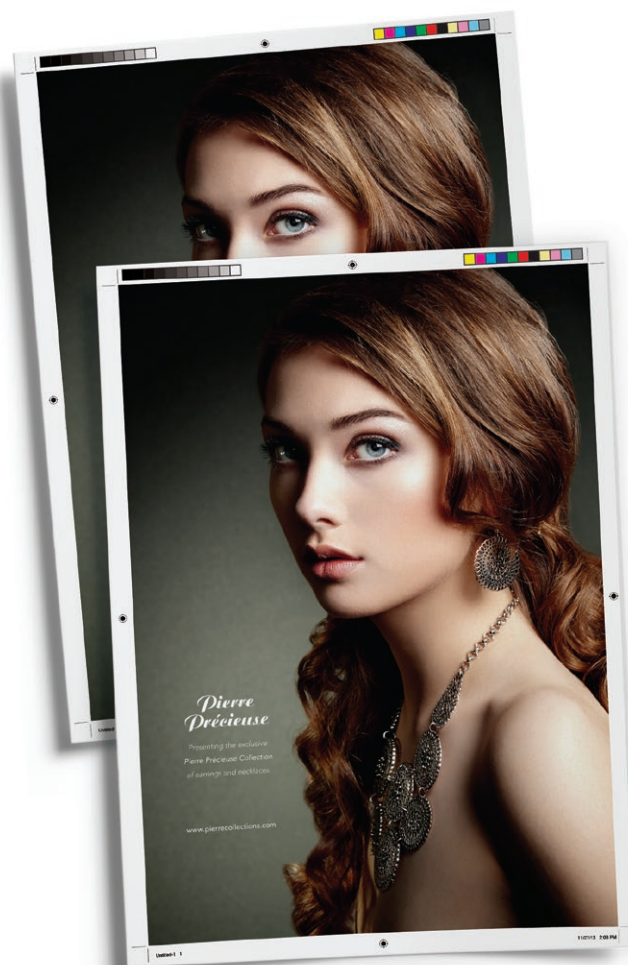
HUMIDITY SENSOR/AIRFLOW UNIT

The controlled internal environment and airflow help maintain consistent, high-quality images across print runs.



FAST OUTPUT

With a start-up time of six minutes or less and a first-copy-out speed of under 7.7 seconds, the imagePRESS C60 is ready when you need it. Production speeds of up to 60 ipm on a wide range of media help keep you on track.



* Available with the Multi-Drawer Paper Deck-B1 and POD Deck Lite-B1 input accessories.

TEAMING WITH CANON

A COMPETITIVE ADVANTAGE

Canon can help you increase productivity and improve your bottom line. Its extensive print experience translates to deep insight into industry characteristics and trends as well as customer goals and challenges. Canon's understanding of various printing markets allows it to tailor solutions to meet your specific needs.

TOTAL SOLUTIONS

The Canon portfolio of technology offerings is among the broadest in the industry. From digital, , web-fed, and wide-format systems to inkjet, photo printers, and workflow solutions, Canon has a customized solution for your business.

Customers share their experiences. Visit:
USA.CANON.COM/PRODUCTIONPRINTING

MARKING ENGINE

Technology:	32-beam R-VCSEL Laser Technology
Resolution:	Up to 2400 x 2400 dpi
Halftones:	256-level Grayscale
Print Speed	8.5" x 11": Up to 60 ipm 11" x 17": Up to 32 ipm 12" x 18": Up to 32 ipm 13" x 19": Up to 30 ipm
Paper Size:	3.94" x 5.83" to 13" x 19.2"
Paper Feeding	
Standard:	1,650 Sheets (20 lb. Bond)
Maximum:	7,650 Sheets (20 lb. Bond)
Paper Weight:	14 lb. Bond to 110 lb. Cover* (52 gsm to 300 gsm)
Envelopes:**	#10 Business, Monarch, 6" x 9", 9" x 12", 10" x 13"
Duplexing/Perfecting:	Automatic Duplex/Perfect Any Supported Stock
Dimensions (H x W x D):	56.1" x 60.2" x 36.8" Includes Operator Panel

DIGITAL FRONT-ENDS

External:	imagePRESS Server F200, standard includes X-Rite iPro 2 Spectrophotometer
Embedded:	imagePRESS Server G100
Options:	Fiery Compose, Fiery Impose, Fiery Impose/Compose Bundle, GA Premium Package,* Removable HDD Kit-1B,* Integrated Interface & Stand-A1,* Productivity Package,* X-Rite iPro 2 Spectrophotometer†

INPUT ACCESSORIES***

Multi-Drawer Paper Deck-B1

Paper Capacity:	6,000 Sheets (20 lb. Bond)
Paper Size:	5.5" x 7.2" to 13" x 19.2"
Paper Weight:	14 lb. Bond to 110 lb. Cover (52 gsm to 300 gsm)
Dimensions (H x W x D):	40.9" x 37.4" x 31.4"

POD Deck Lite-B1

Paper Capacity:	3,500 Sheets (20 lb. Bond)
Paper Size:	5.5" x 5.83" to 13" x 19.2"
Paper Weight:	17 lb. Bond to 110 lb. Cover (52 gsm to 300 gsm)
Envelopes:**	#10 Business, Monarch, 6" x 9", 9" x 12", 10" x 13"
Dimensions (H x W x D):	22.5" x 28.2" x 27.0"

Stack Bypass-B1

Paper Capacity:	100 Sheets (20 lb. Bond)
Paper Size:	3.94" x 5.83" to 13" x 19.2"
Paper Weight:	16 lb. Bond to 110 lb. Cover (52 gsm to 300 gsm)
Envelopes:	#10 Business, Monarch, 6" x 9", 9" x 12", 10" x 13"

Duplex Color Image Reader-H1

Document Size:	Statement to 11" x 17"
Resolution:	Up to 600 x 600 dpi
Scan Speed	300 dpi 600 dpi
BW (duplex):	Up to 200 ipm Up to 120 ipm
Color (duplex):	Up to 140 ipm Up to 70 ipm

FINISHING ACCESSORIES***

Professional Puncher-B1/Integration Unit-A1††

Original Size:	LTR, LTR-Tab Paper
Paper Weight:	20 lb. Bond to 80 lb. Cover (75 gsm to 216 gsm)
Die Set Patterns:	Loose Leaf 3-Hole/5-Hole, Velo Bind 11-Hole, Plastic Comb 19-Hole, Twin Loop 21-Hole/32-Hole, ProClick 32-Hole, Color Coil 44-Hole
Dimensions (H x W x D):	40.9" x 22.0" x 31.2"†††

Finisher-AM1/Saddle Finisher-AM2

Tray Capacity	
Top Tray:	1,000 Sheets (20 lb. Bond)
Lower Tray:	4,000 Sheets (20 lb. Bond)
Saddle-Stitch Tray:	30 Booklets or Limitless
Staple Positions:	Corner Stapling, Double Stapling
Paper Weight:	14 lb. Bond to 110 lb. Cover (52 gsm to 300 gsm)
Paper Size	
Stapling:	Executive, Letter-R, Letter, Legal, 11" x 17", Custom Size
Saddle Finisher:	Letter-R, Legal, 11" x 17", 12" x 18", 13" x 19", Custom Size
Stapling Capacity:	Up to 100 Sheets
Booklet Stapling Capacity	
Uncoated:	Up to 25 Sheets
Coated:	Up to 10 Sheets
V-Folding:	Up to 5 Sheets without Stitch (20 lb. Bond)
Dimensions (H x W x D):	AM1: 48.8" x 35.0" x 31.2" AM2: 48.8" x 41.7" x 31.2"

Staple Finisher-T1/Booklet Finisher-T1

Tray Capacity	
Escape Tray:	250 Sheets (20 lb. Bond)
Top Tray:	1,300 Sheets (20 lb. Bond)
Lower Tray:	2,450 Sheets (20 lb. Bond)
Saddle-Stitch Tray:	Up to 25 Booklets
Staple Positions:	Corner Stapling, Double Stapling
Paper Weight	
Top/Lower Tray:	14 lb. Bond to 110 lb. Cover (52 to 300 gsm)
Escape Tray:	14 lb. Bond to 140 lb. Index (52 to 256 gsm)
Paper Size	
Stapling:	Executive, Letter-R, Letter, Legal, 11" x 17"
Saddle-Stitching:	Letter-R, Legal, 11" x 17", 12" x 18"
Stapling Capacity:	Up to 50 Sheets
Booklet Stapling Capacity:	Up to 16 Sheets
Dimensions (H x W x D):	44.1" x 30.0" x 25.8"

* Engine cassette supports 52 gsm to 220 gsm.

** Requires Envelope Attachment Kit.

*** Optional.

▪ Option for external imagePRESS Server F200 only.

† Option for embedded imagePRESS Server G100 only.

†† Must connect to Finisher-AM1 or Saddle Finisher-AM2.

††† Size includes Professional Puncher Integration Unit-A1.



As an ENERGY STAR® Partner, Canon U.S.A., Inc. has certified this model as meeting the ENERGY STAR energy efficiency criteria through an EPA recognized certification body. ENERGY STAR and the ENERGY STAR mark are registered U.S. marks. Canon and imagePRESS are registered trademarks of Canon Inc. in the United States and may also be registered trademarks or trademarks in other countries. All other referenced product names and marks are trademarks of their respective owners. All printout images and effects are simulated. Specifications and availability subject to change without notice. Not responsible for typographical errors. ©2016 Canon U.S.A., Inc. All rights reserved.

