

SMALL in size. BIG on colour.

Dazzle with colours without the bulk

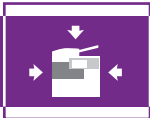


Unleash Your Creativity in a Compact Space

Toshiba's new all-in-one e-STUDIO2051C/2551C colour Multifunction Printers are now more compact, more light-weight so that it can fit snugly into any office corner. Friendly to the environment, these new printers are easy to use and can add splashes of colour to your office documents.

e-STUDIO2051c

e-STUDIO2551c

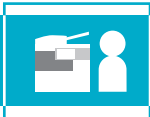


COMPACT DESIGN

The all-in-one benefits of the e-STUDIO2051C/2551C are yours in a compact body that centralises controls, simplifies management of consumables and services, and eliminates the messy connections that multiple devices require.

- Printing, copying, scanning and faxing* come together in a stylish, compact body
- Paper sizes up to A3 are handled

*Fax is offered as an option.



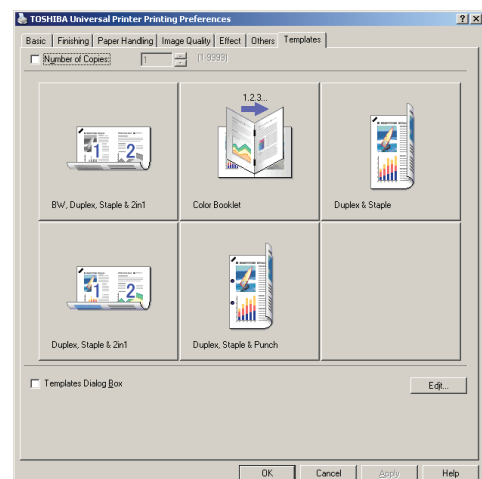
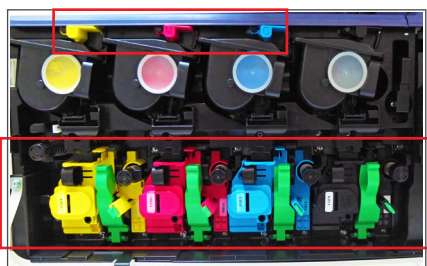
EASE OF USE

Toshiba takes a comprehensive approach to simplify operation. From large LCD panel to universal design, a host of innovations and refinements creates a stress-free, wholesome experience for you.

- The 7" colour LCD touch screen panel with tilt-adjustable design
- The right paper size is automatically detected when papers are placed in the drawers.
- Both the control panel and printer driver feature an easy-to-use template that instantly recalls various settings to make routine work easier.
- One-touch template can perform printing setting by one-touch. You can easily print the document without the need to set the printer driver.



- Universal design features include paper drawer handles that are easy to open and an optional accessible arm that makes the RADF (Reversing Automatic Document Feeder) easy to use for the physically impaired.
- Colour-challenged individuals will appreciate "Color Universal Design" features like easy-to-recognise panel screens, LED lamps and operation levers.





VIVID COLOUR

Documents containing colour information look great on PC monitors but lose their luster and important details when printed in black and white. The high-quality colour performance of the e-STUDIO2051C/2551C can make your documents more appealing.

- The new image processing engine and LED print head deliver an accurate reproduction of text, graphics, fine lines, tiny dots etc. in both full colour and Black-and-White.
- Toshiba's new toner improves glossiness, thus boasting vivid colour reproduction of even the most colourful photos.
- Full-colour paper documents can be scanned and saved in full colour without losing the smallest details.



Laser Print Head



LED Print Head

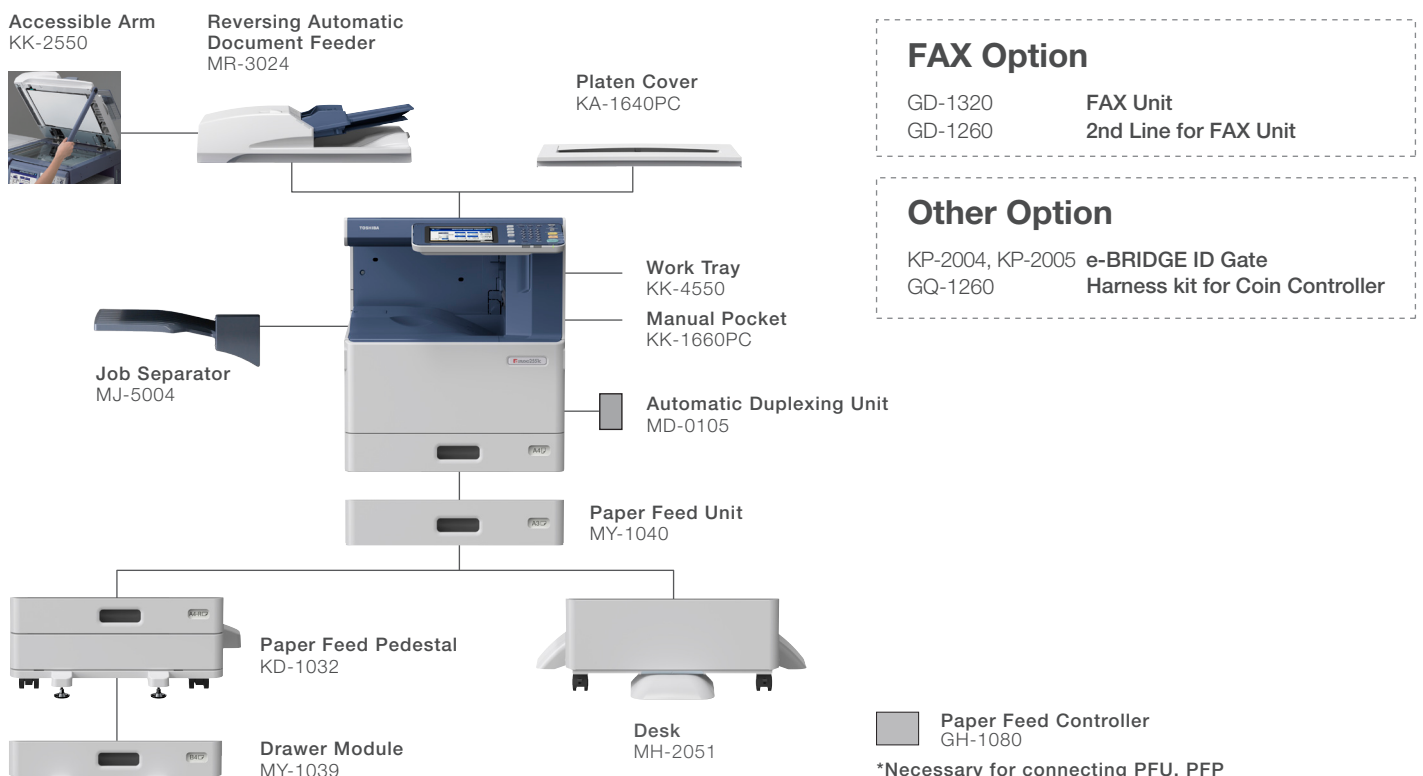


ECO-FRIENDLY

Toshiba's multifaceted commitment to the environment continues in the e-STUDIO2051C/2551C. Eco-friendly features range from innovation-driven reductions in power consumption to the reduced use of materials that can harm the environment.

- Designed to be of low power consumption
 - ~ Low Temperature Fusing Toner and Fusing Unit reduce power consumption and the warm-up time becomes 35 seconds
 - ~ Super Sleep Mode reduces power consumption to 1W*
 - ~ LED print head reduces power consumption
 - ~ LED light is used for the light source of scanner
- Logistic and transportation burden is reduced due to the compact size and light weight
- Toshiba minimized the use of harmful materials and maximised the use of recycled plastics. Even the emblem is made of biomass plastic.
- These models comply with worldwide environmental standards such as Energy Star Program version 1.1.

SYSTEM CONFIGURATIONS



SPECIFICATION

General	
Type	Desktop
Maximum original paper size	A3
Print/copy speed (A4)	Colour: 20/25 ppm, B&W: 20/25 ppm
Paper input capacity (80g/m², A4)	Standard: 250 sheets (Drawer), 100 sheets (Stack Feed Bypass)
Note: Paper input capacity depends on system configuration.	Optional: 550 sheets (PFU) or 550 sheets (Paper Feed Pedestal), 550 sheets (Drawer for PFP)
Paper size & weight	Drawers: A5-R — A3, 60 — 163g/m ² Stack Feed Bypass: 100 x 148mm — A3, 60 — 209g/m ²
Memory	2GB + 8GB (SSD)
Warm-up time	Approx. 35 sec.
Power consumption	Max. 2.0kW (220-240V)
Dimensions (W x D x H)	575 x 590 x 662mm
Weight	*Height at original glass Approx. 56kg

Printing Functions	
Print engine resolution	Max. 600 x 600 dpi
Supported OS	Windows XP SP3 (32bit) Windows XP X64 (64bit) Windows Server 2003 (32bit) (SP1 Recommended) Windows Server 2003 X64 (64 bit) Windows Vista SP2 (32 bit) Windows Vista SP2 (64 bit) Windows Server 2008 (32 bit) Windows Server 2008 (64 bit) Windows Server 2008 R2 (64 bit) (SP1 Recommended) Windows 7 (32 bit) (SP1 Recommended) Windows 7 (64 bit) (SP1 Recommended)
Interface	Standard: 10/100/1000baseT
Network protocols	TCP/IP (IP v4/v6), IPX/SPX, NetBIOS over TCP/IP
Printing protocols	Windows Printing, LPR/LPD, IPP, NetWare P-SERVER, Port 9100, WS Print, FTP
PDL	PCL6 Emulation
Major features	•Watermark Printing •Image Overlay •Tab Paper Printing •Poster Print

Copying Functions	
Original size	A5-R — A3
Copy size	Drawers: A5-R — A3, SFB: 100 x 148mm — A3
Resolution	Scanning: 600 x 600 dpi Copying: 600 x 600 dpi
Original scanning speed	25 spm (A4)
First copy time	8.2 sec. (B&W), 10.3 sec. (Full colour)
Multiple copies	1 to 999 sheets
Colour mode	Auto Colour, Colour, Twin Colour, Mono Colour, B&W
Original mode	Text, Text/Photo, Photo, Printed Image, Map, Image Smoothing
Reproduction Ratio	Note: The original mode may not be available in selected colour modes. 25% to 400% (1% Increment) (Glass)
Exposure control	25% to 200% (1% Increment) (Original on RADF) Automatic/Manual (11 steps)
Major features	•2 in 1/4 in 1*, 4 in 1/8 in 1(Duplex)*2 •Rotation Copy •Alternation*1 •Annotation •X-Y Zoom*1 •Trimming/Masking •Magazine Sort*2 •Job Reservation •Job Build •Center Erase •Image Shift •RGB Adjustment •Background Adjustment •Sharpness Adjustment •Twin Colour Copying •Colour Balance Adjustment

Scanning Functions	
Scanning speed (A4)	Colour/B&W: Up to 50 spm (300 dpi)
Scanning mode	Auto Colour, Colour, Grayscale, B&W
Scan format (Colour)	B&W: TIFF, PDF Grayscale/Colour: JPEG, TIFF, PDF, Slim PDF Auto Colour: TIFF, PDF
Scanning resolution	600/400/300/200/150/100 dpi
Major features	•2-sided Scan •Image Rotation •Mixed Size Paper Scanning •Scan to Email •Scan to file (SMB, FTP, FTPS, IPX/SPX, NetWare over TCP/IP) •WS Scan •Omit Blank Page •Original Outside Erase

Fax Functions	
Compatibility	Super G3, G3
Modem Speed	Max. 33.6kbps
Data Compression Method	JBIG, MMR, MR, MH
Transmission Speed	Approx. 3 seconds
Memory Transmission	Max. 50 Jobs 2000 destination, 400 destinations/job, Max. 1000 pages/file
Scan Speed	0.7 seconds per page (A4)

*1: Optional RADF is required.
*2: Optional RADF and ADU are required.
*3: Network scanning only.

Distributed by

Options	
ADU (Automatic Duplexing Unit) MD-0105	
Paper size	A5-R — A3
Stack capacity	Stackless
Paper weight	60 — 163g/m ²
RADF (Reversing Automatic Document Feeder) MR-3024	
Original capacity (80g/m²)	100 sheets (A3, A4)
Original setting	Face-up
Available original size & weight	A5-R — A3, 35-157g/m ² (single sided), 50-157g/m ² (double sided)
Dimensions (W x D x H) & Weight	575 x 531 x 135mm, Approx. 11.0kg
Paper Feed Pedestal KD-1032	
Paper supply (80g/m²)	Approx. 550 sheets
Paper size & weight	A5-R — A3 (60 — 163 g/m ²)
Dimensions (W x D x H) & Weight	575 x 583 x 292mm, Approx. 16.3kg
Drawer Module MY-1039	
Paper supply (80g/m²)	Approx. 550 sheets
Paper size & weight	A5-R — A3 (60 — 163 g/m ²)
Dimensions (W x D x H) & Weight	532 x 575 x 89mm, Approx. 3.1kg
Paper Feed Unit MY-1040	
Paper supply (80g/m²)	Approx. 550 sheets
Paper size & weight	A5-R — A3 (60 — 163 g/m ²)
Dimensions (W x D x H) & Weight	575 x 583 x 163mm, Approx. 9.5kg
Job Separator MJ-5004	
Capacity (80g/m²)	Upper Tray: Approx. 150 sheets Lower Tray: Approx. 250 sheets
Dimensions (W x D x H) & Weight	498 x 415 x 153mm, Approx. 3.3kg
FAX Unit GD-1320	
Compatibility	Super G3, G3
Number of lines	1 line (2nd line is optional)
Modem speed	Max. 33.6kbps
Data compression method	JBIG, MMR, MR, MH
Communication protocols	ITU-T T.30
Transmission speed	Approx. 3 sec. per page
Scanning mode	Text, Text/Photo, Photo, B&W only
Gray scale	256 steps
2nd Line for FAX Unit GD-1260	
Harness Kit For Coin Controller GQ-1260	
e-BRIDGE ID Gate KP-2004 for HID/KP-2005 for MIFARE	
Accessible Arm KK-2550	
Work Tray KK-4550	
Paper Feed Controller GH-1080	

ISO 9001 and ISO 14001 Certifications	
These highly acclaimed certifications are recognised worldwide as measures of top quality and environmental management excellence. They are awarded to manufacturers for facilities and practices that meet the strict standards set by the Geneva based International Standardization Organization. To date, four copier sales affiliates and all Toshiba TEC manufacturing facilities where copiers, accessories, supplies and parts are produced have received ISO 9001 certification, while four copier sales affiliate and all Toshiba TEC manufacturing facilities have received ISO 14001 certification — even more reasons to count on Toshiba.	

Microsoft and Windows® are registered trademarks of Microsoft Corporation in the United States and/or other countries.
All other brand and/or product names are trademarks of their respective owners.

This brochure was compiled based on information that was accurate prior to product launch. Product design and specifications are subject to change without notice. The colour(s) of the actual product may vary from the colour(s) shown in this brochure. No part of this material may be used or reproduced in any manner whatsoever without permission. 1GB is equivalent to 1 billion bytes. Warm-up time and print speed may vary depending on the operating environment. ©2012 TOSHIBA TEC CORPORATION All rights reserved.

As an ENERGY STAR Partner TOSHIBA TEC CORPORATION has determined that this multifunctional device model meets the ENERGY STAR guidelines for energy efficiency.

Driven by



Made from 100% Elemental Chlorine Free (ECF) wood pulp, sourced from carefully managed and renewed forests.
This paper is 100% recyclable.

TOSHIBA

TOSHIBA SINGAPORE Pte., Ltd.

www.estudio.com.sg