



Bethel Messenger

www.bethelmethodistcolumbia.com

July 2015 Edition

“ Now you are the body of Christ and each one of you is a necessary part of it.”

1 Corinthians 12:27

Staff

Rev. Pam Ledbetter, Pastor

Mrs. Carol Barnett
Business Administrator

Mr. Bob Silva
Administrative Assistant

Mrs. Lucy Kelly
*Director of Education
& Family Ministries*

Mrs. Marian Scullion
Director of Music Ministries

Mr. Bill Webb, Organist

Mrs. Sylvia Hulbert
Handbell Director

Mrs. Carol Burger
Director of Preschool

Our Missionaries

Rev. & Mrs. Monty Taylor
Budapest, Hungary

Jim Hynds & Family
Campus Crusade for Christ

Sunday Schedule

Join us for

Reach! Contemporary 9:00 am

Sunday School 9:45 am

Worship 11:00 am

Nursery 9-12 am

Long Range Planning for Bethel

If someone were to ask you ‘What do you think Bethel will look like in five years?’ would you be able to answer them? What would you say? I think all of us hope that in five years Bethel will be an even stronger church than it is now. So what should we do to make it happen?

For the past several months, Bethel has been engaged in developing a Five-Year Plan. The Long Range Planning Committee, chaired by Sally Hafner, is made up of Kate Brown, Jaci Busbin, Mike Hellams, Lucy Kelly (who replaced Michelle Keiffer), Debbie Carter, and David Walker. Todd Davis was also part of the team and has now been replaced by Rev. Pam Ledbetter.

The Committee has completed a number of tasks in the process of developing our plan. These include reaffirming Bethel’s Mission Statement; distributing copies of the devotional book ‘40 Days of Prayer’ by Mark Tidsworth; gathering input from small groups in the church; and developing a five-year Vision for Bethel.

Our remaining work is the completion of a Ministry Plan that will spell out the specific actions that we plan to take in order to make our Vision for Bethel a reality. Our committee has affirmed that we believe that our Vision is in keeping with God’s plan for Bethel, and we will seek to faithfully execute that plan.

We look forward to completing our plan and sharing it with the congregation within the next few months. As Todd stated in an earlier update, “we believe that we have begun a wonderful spiritual growth experience where God is leading our church to be even more faithful in our call to KNOW, LOVE, AND SERVE!”

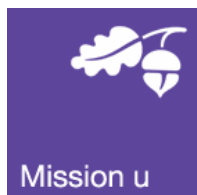
If you would like to speak with either of us about your hopes for Bethel’s future, you are welcome to contact Lex at 254-4157 or lexmcdonald@sc.rr.com; or Sally Hafner at 736-2526 or shafner@aol.com.

KNOWING, LOVING, SERVING

. . . so the world will experience Christ’s love!

I have received a warm welcome from Bethel and I do not mean the heat this week! Members welcomed me at the parsonage. Rebecca waited with me for the moving van, Debra and Al sat with me at conference and brought me a delicious casserole the first night. Sally brought a wonderful pie and salad fixings and went and got bottled water for me because I was stuck at the parsonage with the movers. Chuck and Ken both stopped by and offered their support. Our district superintendent paid me a visit and offered a prayer. Our staff has been very kind in reaching out to me. Poor Bob has answered a million questions. Todd and Cara have also helped me so much in the transition. I join you in wishing them all of God's blessings in their new assignment. They have created such a strong foundation in ministry. I am delighted to follow them. Moving is traumatic but made more gracious by wonderful people at church. I look forward to getting to know you all.

God Bless each of you! Rev. Ledbetter



MISSION u conference of all United Methodist Women in South Carolina is July 23-25, 2015 at Spartanburg Methodist College. In April the members of Bethel were asked to donate craft items for Mission U Craft Room. It is time to bring these items to the church. We will be collecting and packing crafts to be delivered to Mission U until July 21. Please bring your items to the church and place them in the storage boxes outside of church office or phone Bonnie Speas at 803-727-8515 to make other arrangements..

News from the Kitchen Committee

The Kitchen Committee welcomes our new Minister, the Reverend Pam Ledbetter.

The Kitchen Committee would like to express its appreciation to the congregation for the way they have been taking care of the kitchen when using it. This makes the work of the committee much easier. We all enjoy the wonderful facilities and realize that we must take care of it as if it were our own, which it really is.

The Congregation is reminded of the herb garden by the back door of the Kitchen. You are welcome to pick some of the herbs for your own kitchen.

The Kitchen Committee

What to be a BUM?

Do you recognize any of these BUMS? Well, we would like everyone to come join us with some of your fresh ideas on good places to visit. So put on your thinking caps, look through the magazines and come join us on Monday, August 3rd at 1:30 pm in the Conference Room. We are planning a trip to the State Supreme Court on September 17, for a 10:30 am tour. We would like some new people to join us and are always looking for new places to go. We hope to see you in August.



For our loved ones . . .

In memory of **Nettie Allen**, by Frank and Sally Hafner, Brenda Shealy, and Ron and Lucy Gordon, Gwen Barnes, and United Methodist Foundation, Nashville, TN.

FAMILY

ministry



At Bethel, we seek to honor God by providing opportunities for all ages to fulfill our mission of *Knowing, Loving, Serving...so the World will experience Christ's love!* We hope you will join us.

Mark Your Calendar!

June 29th
Mission Monday

July 9-12
Immerse!
Youth Discipleship Retreat

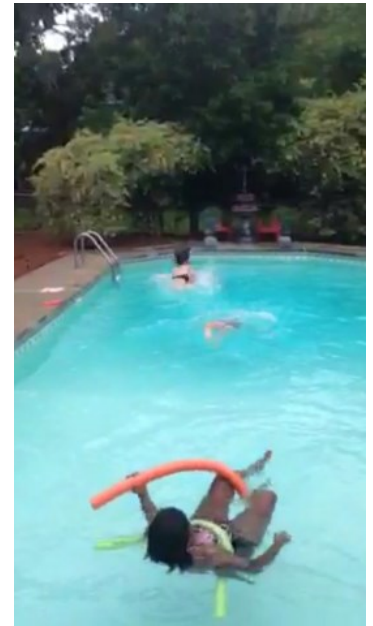
July 13-17
G-Force VBS!

July 18-25
Salkehatchie
Youth Mission Trip

August 5th
Youth Mission Dessert

Youth Pool Party

Thank you to John and Ann Mathis for another fun pool party to kick-off summer! The youth attended a fun evening of splashing, jumping contests, and snacking at the Mathis home on June 7th. We look forward to many more fun summer nights !





Please contact Martie Walker (mdtwalker@yahoo.com) or Lucy Kelly (at the church office) if you have questions. We are looking forward to a week of fun sharing Christ's love with His children!

Monday July 13th– Friday July 17th

5:30 pm Family Dinner

6pm –8pm VBS program

Registration for **children** and **volunteers** has begun!

You can register online this year:

<http://cokesburyvbs.com/bethelcolumbia>

We will have an Adult Bible Study in the Holroyd Classroom led by Louise Smith. Adult registration forms can be found as an insert in the church bulletin and at the Reach Service resource

Order your VBS T-Shirt today! Our shirts will have the Bethel logo on them and the back will read **“In God we live, move, and exist.” Acts 17:28.**

Shirts are \$8.00 for youth and adult sizes. (add \$2.00 for any size over XL) Please bring money to the Bethel church office, or place it in the offering plate in a marked envelope (checks can be made out to Bethel with ‘VBS t-shirt’ in the memo line).



BETHEL IN MISSIONS

We made 5 blankets on our first Mission Monday!

Mission Mondays have started!

Join us from 9:30-11:00am each Monday
From June 15- August 3 (except July 6th & 13th!)
as we make no-sew blankets for Project Linus.



www.projectlinus.org Blankets will be distributed by

Project Linus to children who are seriously ill,
traumatized or otherwise in need.

All are invited to participate!

Children 5th grade and younger should come with
an adult who will stay and help where needed.

Donations of 1 1/2 yard or larger pieces of fleece
(child friendly prints or solids) can be dropped
off in the church office. Thank you to Janel Bell, Martie
and Christopher Walker, and Karen Stewart, for your
donations and time. Contact Lucy in the church office with
questions.



VBS is working with 4 missions this summer!

We are teaching our children what it means to be the hands and feet of
Christ.

1. **Family Promise** (<http://www.familypromisemidlands.org/>)
2. **Kairos** (<http://www.mykairos.org/about.html>)
3. **Soles4Souls** (www.soles4souls.org)
4. **Project Linus** (www.projectlinus.org)



Youth & Young Adult Spotlight

Youth Mission Dessert



Keep your calendars open for Wednesday,
August 5th from 6pm-8pm in the PAB!



From July 9-12, members of our youth will be attending the SCYMP Immerse Retreat at Spartanburg Methodist College in Spartanburg, South Carolina. Their weekend will be filled with inspiring worship (led this year by Rev. Tiffany Knowlin and worship leader Robert McMichael), family groups that offer a chance to process the weekend in a safe community of peers, breakout sessions that deal head on with relevant topics where faith and life intersect, great recreation time for fun and fellowship, and

Salkehatchie

Some of our youth will be working at Salkehatchie Camp Lake Murray from July 18th-25th.

Salkehatchie Summer Service is a pioneering servant ministry at select sites in South Carolina involving high school and college age youth, adult community leaders and persons of different cultures in upgrading housing, motivating community cooperative efforts by helping persons to help themselves, and providing all participants with opportunities for personal growth and service.



BETHEL TO HOST FAMILY PROMISE AUGUST 9-16

Yes, it's that time again!! Bethel will be welcoming guests to our campus again August 9-16.

Our newest family consists of Dad (Jose), mom (Romy), 9-year old son (Ivan) and 20 month old son (Thiego). This family recently emigrated from Cuba, both parents are professional dancers and have traveled extensively. They have registered with the immigration authorities, are currently waiting on work permits, attending free ESL (English as a second language) classes and offering Latin Dancercise classes (more on this below). The Prince family (Fredrika, Jaavier, Justin) have left the program...SUCCESS!!!

Volunteers are the heart of Family Promise, and regardless of how many families we serve, we need the same amount of volunteers!! Approximately 55-60 volunteers are needed each host week. We have been averaging around 40 volunteers, which means several people do double, sometimes triple duty!! So, there are plenty of spaces available in the following areas:

Food: Contact Sharon Scullion Smith 466-4910 or Sharon@sc-cpa.com.

Laundry: Contact Cheryl Johnson 738-2611 or dojosc@aol.com

Room Environment: Anne Mathis 360-2307 or jam1966@sc.rr.com

Property & facilities: Mike Hellams 319-8171 or mikeh@hmsllc.com

Evening Hosts: Martie Walker 212-8256 or mdtwalker@yahoo.com

Overnight Hosts: Martie Walker 212-8256 or mdtwalker@yahoo.com

Drivers: or questions about any of the above: Bonnie Speas 727-8515 or bspeas@umcsc.org; or Sally Hafner 261-0612, sfhafner@aol.com

As you can see, there are a variety of ways that you can help with this incredible outreach ministry. All it takes is a willingness to serve God through serving others!! Also, another way you can participate is.....

.....**LATIN DANCERCISE CLASSES!!** This is a fun way to get active for all ages!! The classes will be offered on Tuesday nights from 7:30-8:30 and taught by our two current participants in Family Promise, Romy and Jose Diaz. The classes will follow the hosting schedule. So, they will be offered at Bethel the week we host, then at the next host church, etc. Call Sally or Bonnie for a host week schedule if you are interested. Classes are open to the community and free, and any free-will donations would go to Family Promise to help support this outstanding family as they continue to transition through Family Promise and establish stability.

Bethel United Methodist Church

4600 Daniel Drive
Columbia, SC 29206
803-787-3058

RETURN SERVICE REQUESTED

Prayer Concerns

As a family of faith we are called to be in prayer for one another. Contact the church office or Iva Dell Griffin @ 782.5032 to be added to the Prayer Chain.



Church Office Hours

Mon.—Thur. 9:30 am - 4:00 pm
Friday 9:30 am - 1:00 pm

Publication Submission Deadlines

The deadline for the *Bulletin* is 9:00 am on the preceding **WEDNESDAY**.
The deadline for *The Messenger* is 9:00 am on the **25th** of each month.

For addresses or contact information (not listed in the church directory) please call (787-3058) or email the church office at office@bethelmethodistcolumbia.com

Members in Independent and Assisted Living Communities

Homebound Members

Fran Love	Dot Miller
Margie Dent	Marjorie Steadman
Clyde Hasty	Irene Boyd
Betty Hulsey	Philip Meek
Lillian Haller	
Sarah Walker	

Harry & Sarah Parker — Still Hopes,
West Columbia, SC

Betty Shuler — Morningside,
Lexington, SC

Lawrence & Virginia Loveless —
Presbyterian Home, Lexington, SC

Helen McDermott — The Waterford,
Columbia, SC

Gladys Blackmon — Morningside
Rock Hill, SC

Vickie Hill — The Waterford
Columbia, SC

Margaret Campbell — Arden, NC

Elizabeth Christopher — Methodist Home,
Orangeburg, SC

Lois McNair — Beaufort, SC

Alma (Toddy) Atwater
Frankie's @ Seaside, Mt. Pleasant, SC

Lois Richbourg — Rice House
Columbia, SC

Carmen & Dick Pool — Rice Estates,
Columbia, SC

Joyce Varn — Forest Pines, Columbia, SC

Eva Mae Nobel — New York State

July Birthdays

7/1 Allison Rogers
7/1 Stacy Allendorf
7/1 Frances Cox
7/1 William Casey Stewart
7/3 Ann Cargile
7/5 Ashely Price
7/6 Parker Willoughby
7/7 Jim Wilson
7/7 Hannah Curran
7/8 Vicki Hill
7/8 Bryson Clark
7/11 Janis Lawther
7/11 Kate Brown
7/11 Christopher Walker
7/12 Shirley Amacher
7/17 Clifford Pearce
7/18 Katie Bostic
7/18 Cate Giametta
7/19 Arnette Jordan
7/22 Preston Curran
7/25 CB Edwards
7/27 Charles Veach
7/28 Sarah Walker
7/29 David Hinze
7/29 Kevin Krebs
7/29 Declan Kelly
7/30 Nellie Davis
7/30 Jonathan McInnis
7/30 Michael Burnett
7/31 Cathy Hungville

July Anniversaries

7/2 David and Janel Bell
7/3 Joe and Brittany
Giametta
7/3 Tom and Joanna
Giudice
7/6 Ron and Lucy Gordon

Serving the Congregation in July

Greeters/Set-Up Volunteers (REACH!)

July 5 Diane Roddey, Debbie Carter/Diane Roddey
July 12 Velma Neely, Kaye Landrum/Kaye Landrum
July 19 David Walker, Frances Cox/David Walker
July 26 Debbie Carter, Diane Roddey/Brenda Harper

Greeters

July 5 Kimberly Hoover, Cora Jiles, Kimberly Wilson
July 12 Sara Derrick, Suzette Wilson, Lee Wilson
July 19 Rebecca Bennett, Nancy Johnson, Bill Lucas
July 26 Arnette Jordan, Ron Jordan, Margaret Hinze

Ushers

July 5 Tom Elliott, Jim Wilson, Furman Porter, Ron Jordan
July 12 Chuck Ward, Joshua Bowman, Mike Hellams, David Walker
July 19 Frances Cox, John Mathis, Anne Mathis, Elizabeth Davis
July 26 Coy White, John Scullion, Brenda Shealy, Dan Toma

Sound System Operator

July 5 Abbie Bowman
July 12 David Walker
July 19 Abbie Bowman
July 26 Brian Kelly

Acolyte/Crucifer

July 5 Christopher Walker/ Jordan Davis
July 12 Emily Rose Walker
July 19 Wilhelm Elliott
July 26 Abbie Bowman

Children's Moment

July 5 Ann Mathis
July 12 Mike Hellams
July 19 Martie Walker
July 26 Christopher Walker

Offering Counters

July 5 Mike Hellams, Kate Brown
July 12 Dianna Elliott, Kimberly Wilson
July 19 Charles Veach, Sarah Derrick
July 26 John Scullion, Chuck Ward

Sanctuary Preparation

July– Iva Dell Griffin, Mary Ott



Bethel UMC Columbia

June Calendar of Events



Wednesday, July 1

- 9:00 Preschool summer camp (EB)
- 10:00 Staff Meeting (CR)
- 2:00 Pray for Bethel (CR)
- 6:00 Worship Committee (PAB)
- 7:00 Boy Scouts (Hut)
- 7:15 Adult Choir Rehearsal (CR)

Thursday, July 2

- 9:00 Preschool summer camp (EB)
- 1:15 Yoga (PAB)

Friday, July 3

Saturday, July 4

- 8:00 Upper Room Prayer (CR)

Sunday, July 5

- 9:00 Reach! Service (PAB)
- 9:00 Nursery (E-154)
- 9:45 Children's Music (E-151)
- 9:45 Sunday School (EB)
- 9:45 Reach! Band Practice (PAB)
- 11:00 Worship (SAN) w/Holy Communion

Monday, July 6

- 12:00 VBS Set-up (EB,SAN,PAB)
- 6:30 Communications Meeting (CR)
- 7:00 Boy Scouts (Hut)

Tuesday, July 7

- 9:00 Preschool summer camp
- 12:00 VBS Set-up (EB,SAN,PAB) (EB)
- 1:15 Yoga (E-151)

Wednesday, July 8

- 9:00 Preschool summer camp (EB)
- 12:00 VBS Set-up (EB,SAN,PAB)
- 6:00 Worship Committee (CR)

Thursday, July 9

- 9:00 Preschool summer camp (EB)
- 12:00 VBS Set-up (EB,SAN,PAB)
- 1:15 Yoga (CVC)

Friday, July 10

- 12:00 VBS Set-up (EB,SAN,PAB)

Saturday, July 11

- 12:00 VBS Set-up (EB,SAN,PAB)

Sunday, July 12

- 9:00 Reach! Service (PAB)
- 9:00 Nursery (E-154)
- 9:45 Children's Music (E-151)
- 9:45 Sunday School (EB)
- 9:45 Reach! Band Practice (PAB)
- 11:00 Worship (SAN)
- 12:00 VBS Set-up (EB,SAN,PAB)

Monday, July 13

- 5:30 VBS (CVC,PAB,TWNC,NCL,SAN)
- 7:00 Boy Scouts (Hut)

Tuesday, July 14

- 9:00 Preschool summer camp (EB)
- 1:15 Yoga (PAB)
- 5:30 VBS (CVC,PAB,TWNC,NCL,SAN)
- 6:00 Finance Committee (CR)

Wednesday, July 15

- 9:00 Preschool summer camp (EB)
- 5:30 VBS (CVC,PAB,TWNC,NCL,SAN)
- 7:15 Adult Choir Rehearsal (CR)

Thursday, July 16

- 9:00 Preschool summer camp. (EB)
- 1:15 Yoga (PAB)
- 2:30 Kitchen Committee (PAB)
- 5:30 VBS (CVC,PAB,TWNC,NCL,SAN)

Friday, July 17

- 5:30 VBS (CVC,PAB,TWNC,NCL,SAN)

Saturday, July 18

- 12:00 Salkehatchie (Other)

Sunday, July 19

- 9:00 Reach! Service (PAB)
- 9:00 Nursery (E-154)
- 9:45 REACH! (PAB)
- 9:45 Nursery (E-151)
- 9:45 Children's Music (E-151)
- 11:00 VBS celebration in Worship Service (SAN)
- Salkehatchie (Other)

Monday, July 20

- 9:30 Mission Monday (PAB)
- 7:00 Boy Scouts (Hut)
- Salkehatchie (Other)

Tuesday, July 21

- 9:00 Preschool summer camp (EB)
- Salkehatchie (Other)

Wednesday, July 22

- 9:00 Preschool summer camp (EB)
- Salkehatchie (Other)

Thursday, July 23

- 9:00 Preschool summer camp (EB)
- 1:15 Yoga (PAB)
- Salkehatchie (Other)

Friday, July 24

- Salkehatchie (Other)

Saturday, July 25

- Salkehatchie (Other)

Sunday, July 26

- 9:00 Reach! Service (PAB)
- 9:00 Nursery (E-154)
- 9:45 Children's Music (E151)
- 9:45 Sunday School (EB)
- 11:00 Worship (SAN)

Monday, July 27

- 9:30 Mission Monday (PAB)
- 6:00 Church Council (PAB)
- 7:00 Boy Scouts (Hut)
- 7:00 Boy Scouts Court of Honor (PAB)

Tuesday, July 28

- 9:00 Preschool summer camp (EB)
- 1:15 Yoga (PAB)

Wednesday, July 29

- 9:00 Preschool summer camp (EB)
- 7:15 Adult choir rehearsal (CR)

Thursday, July 30

- 9:00 Preschool summer camp (EB)
- 1:15 Yoga (PAB)