

Inspection Report (On-Highway Service Truck)

General Info

Year	2015
Make	Ford
Model	F 550
Serial Number	1FDUF5GT1FED32839
Truck Odometer Reading	156787
Current Inspection / State Cert / DOT	06/22 TX D6545930
Previous Application (e.g., earth moving, mining, demolition, etc)	service truck

Dimensions

Dimensions	Please enter in or verify (if pre-populated) the following dimensions.
Length (ft and inches)	22ft 3inches
Width (ft and inches)	7ft 10.5inches
Height (ft and inches)	7ft 5inches
Wheelbase (ft and inches)	7ft 8inch
GVWR (lbs)	19500

Features and Configuration

Features	Enter in and/or verify the following information regarding the features of this equipment.
Drive Type	6X4
Overdrive	N/A
Heat	Yes
A/C	Yes
Radio	Yes
Backup Camera	Yes
Cruise Control	Yes
PTO	No
Engine Brake	No
Differential Lock	No
OMM (Operator & Maintenance Manual)	Yes
Telematics	No
Auxiliary Engine	No
Liftgate	No
Generator	No

Inspection Report (On-Highway Service Truck)

Welder	No
Air Compressor	Yes
Air Compressor Make & Model	vanair 051243-003
Crane	No
Stabilizer Jacks	No
Other Configuration Details / Features / Notes	Truck has a mounted Vice in place at the rear of the vehicle.

Exterior 360 Walkaround

Exterior 360 Walkaround

Instructions	<p>Take photos of the exterior of the piece of equipment. Capture a full 360 degree walk around and all major components.</p> <p>Must have shots to capture:</p> <ul style="list-style-type: none"> - Front - 45 degree corner shot of left front - 45 degree corner shot of right front - Left side - Right side - Rear - 45 degree corner shot of left rear - 45 degree corner shot of right rear <p>Tips for good photos:</p> <ul style="list-style-type: none"> - Move the equipment into a open area without any visual distractions or other equipment in the background
--------------	---

Inspection Report (On-Highway Service Truck)

Exterior Walkaround Photos



Inspection Report (On-Highway Service Truck)



Inspection Report (On-Highway Service Truck)



Inspection Report (On-Highway Service Truck)



Inspection Report (On-Highway Service Truck)



Inspection Report (On-Highway Service Truck)



Inspection Report (On-Highway Service Truck)



Inspection Report (On-Highway Service Truck)



General Appearance Inspection Points

General Appearance

Inspection Report (On-Highway Service Truck)

Close-up Exterior Photos



Inspection Report (On-Highway Service Truck)



Inspection Report (On-Highway Service Truck)



Inspection Report (On-Highway Service Truck)



Inspection Report (On-Highway Service Truck)



Inspection Report (On-Highway Service Truck)



on the left-hand side of the box, there is some paint missing. 9inches long and 3 1/2 inches wide

Inspection Report (On-Highway Service Truck)



Inspection Report (On-Highway Service Truck)



Inspection Report (On-Highway Service Truck)



on the right side of the box, some paint is missing. 15 1/2 inches long and it is less than 1/4inch wide

Inspection Report (On-Highway Service Truck)



scratch on the right hand side box. 14inches long less than 1/4inch wide

Inspection Report (On-Highway Service Truck)



scratches on the right hand side box towards tailgate.

Inspection Report (On-Highway Service Truck)



Inspection Report (On-Highway Service Truck)



small amount of rust

Inspection Report (On-Highway Service Truck)



rusted area located on the left hand side of the box near the tailgate. the area is 17inches long

Inspection Report (On-Highway Service Truck)



small area missing a little paint, 2inches wide and 2inches tall

Body Panels	3 - Normal Wear & Tear
Body Panel Condition	Visible chipped paint or dents
Comments	panels are in good condition and only have some small cosmetic issues

Inspection Report (On-Highway Service Truck)

Body Panels Photos



Inspection Report (On-Highway Service Truck)



Inspection Report (On-Highway Service Truck)



Inspection Report (On-Highway Service Truck)



Inspection Report (On-Highway Service Truck)



Doors / Canopy Latches	3 - Normal Wear & Tear
Doors / Canopy Latches Condition	No visible damage
Steps / Ladders	3 - Normal Wear & Tear
Steps / Ladders Condition	Steps/ladders are fully intact and appear structurally sound
Handrails	0
Glass	3 - Normal Wear & Tear
Glass Condition	Glass intact, no visible damage
Mirrors	3 - Normal Wear & Tear
Mirror Condition	Mirrors present and intact, no visible damage
Exterior Lights	3 - Normal Wear & Tear
Exterior Lights Condition	No visible damage, lighting system is operational

Cab Inspection Points

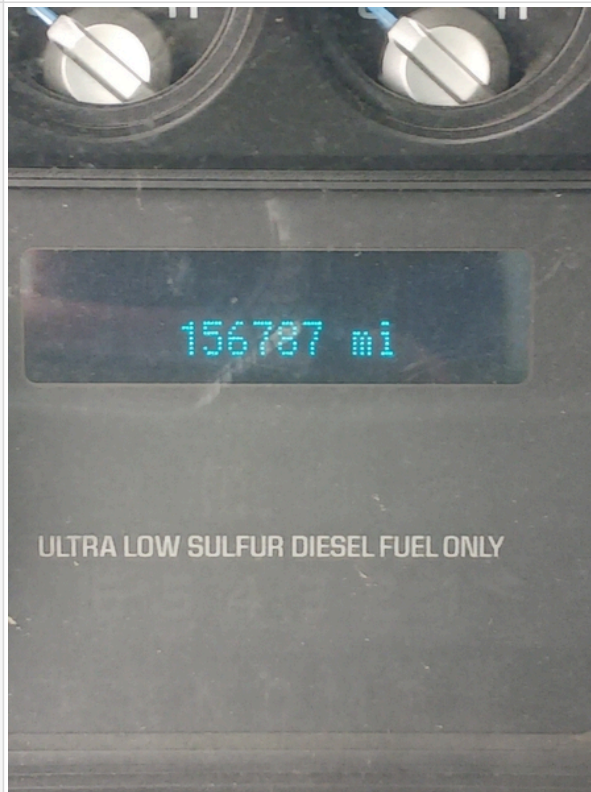
On Highway - Cab

Inspection Report (On-Highway Service Truck)

VIN/Serial Number Plate Photo



Odometer Photo

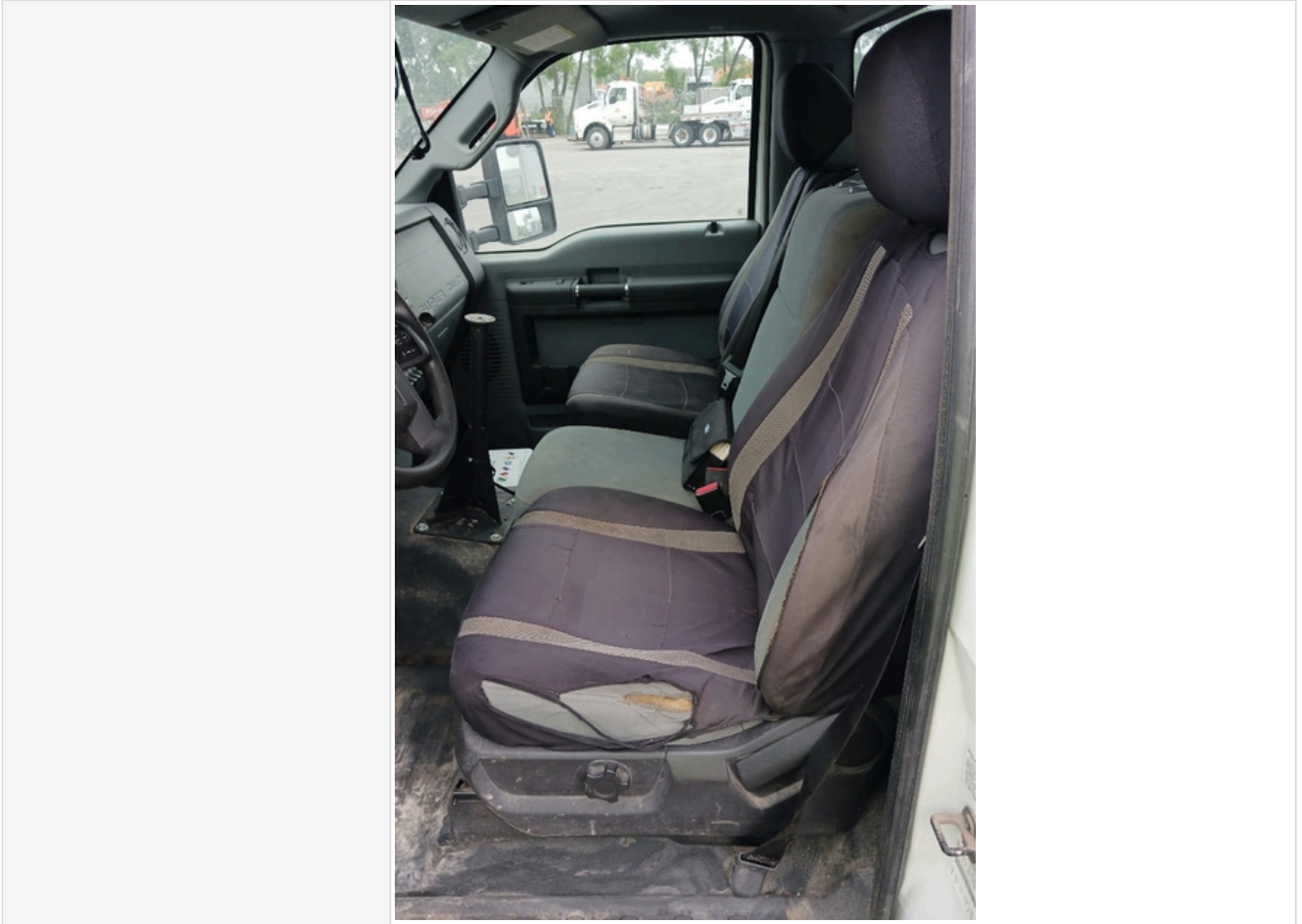


Inspection Report (On-Highway Service Truck)

Cab Interior Photos



Inspection Report (On-Highway Service Truck)



Inspection Report (On-Highway Service Truck)



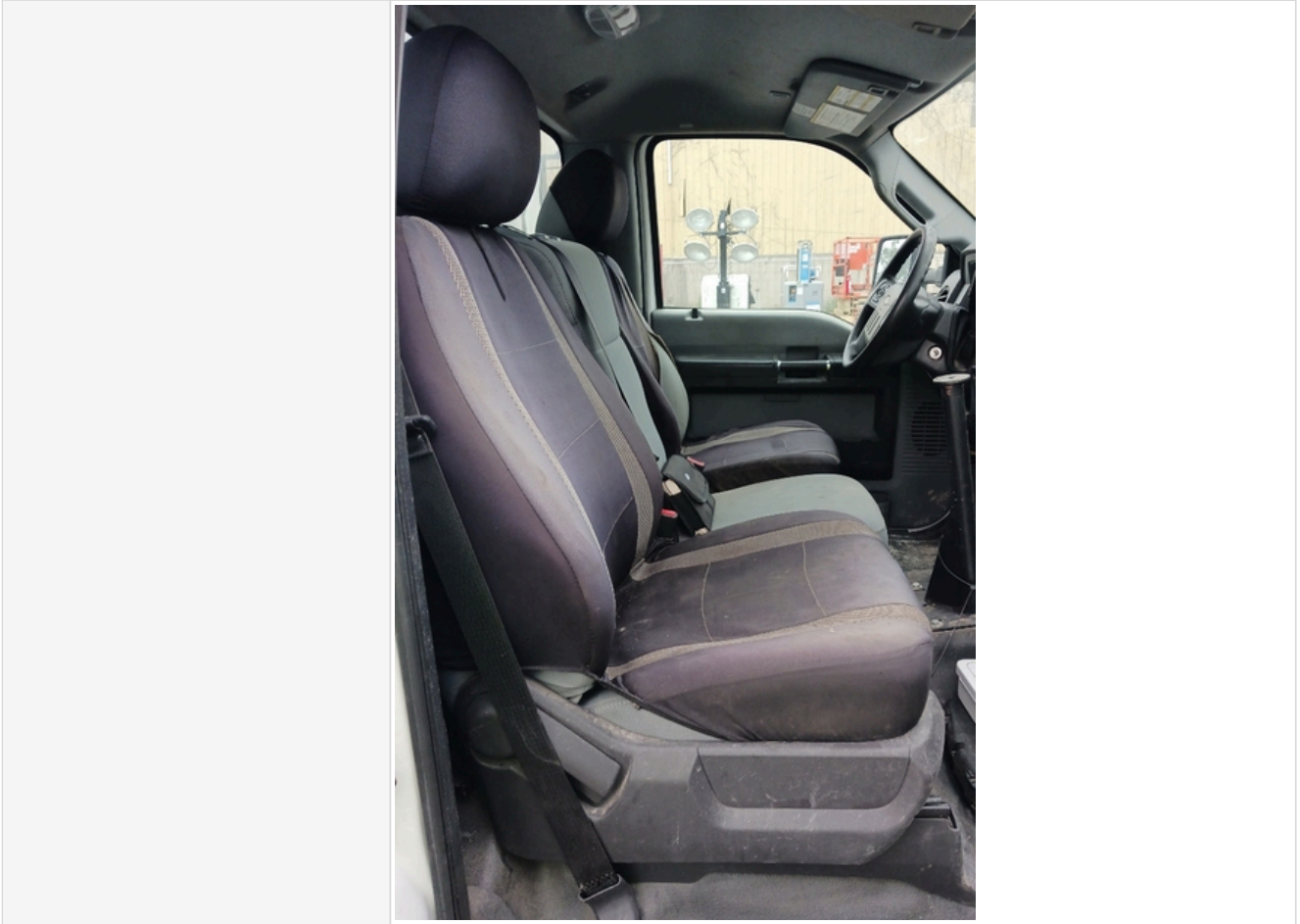
Inspection Report (On-Highway Service Truck)



Inspection Report (On-Highway Service Truck)



Inspection Report (On-Highway Service Truck)




Inspection Report (On-Highway Service Truck)



Odometer Activity	3 - Normal Wear & Tear
Odometer Condition	Odometer is working and in good condition
Controls/Switches/Gauges	3 - Normal Wear & Tear
Controls/Switches/Gauges Condition	All switches/gauges are in good condition and functioning
Brake System Type	Other (Please Specify)
Specify Brake System Type	super duty disc breaking system
Clutch	0
Horn	3 - Normal Wear & Tear
Horn Condition	Horn is functioning as expected
Reverse Alarm / Backup Camera	3 - Normal Wear & Tear
Reverse Alarm / Backup Camera Condition	Backup camera has clear display and is working as expected, Other (see comments)
Comments	This vehicle does not have a back up alarm

Inspection Report (On-Highway Service Truck)

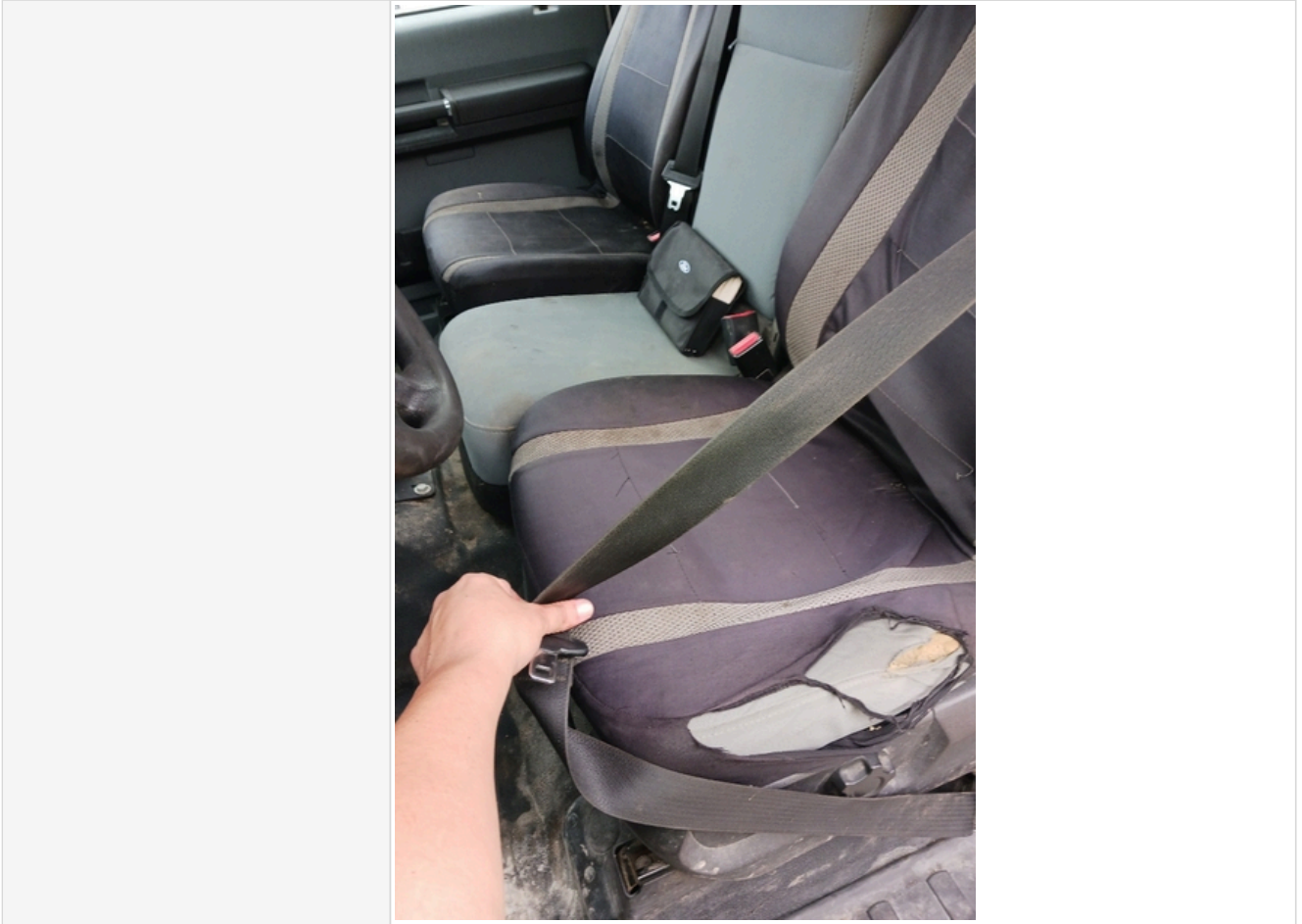
Backup Camera Photos	
Heater & A/C	3 - Normal Wear & Tear
Heat & A/C Condition	Heater and A/C work as expected
Interior Lights	3 - Normal Wear & Tear
Interior Lights Condition	All interior lights are installed and functioning
Seats/Seat Belts	3 - Normal Wear & Tear
Seats/Seat Belt Condition	Seat(s) have minor surface staining or small tears, Seat belt secures properly
Comments	there are some small tears on the driver side seat

Inspection Report (On-Highway Service Truck)

Seats/ Seat Belt Photos




Inspection Report (On-Highway Service Truck)



Inspection Report (On-Highway Service Truck)



Inspection Report (On-Highway Service Truck)

	
Cab Interior Overall Rating	3 - Normal Wear & Tear
Comments	cab has a minor tear on the driver side seat and the interior has some minor staining, but it is in good condition.

Engine Inspection Points

Engine

Engine Type (Make, Model, Cylinders, Hp)	Ford 6.7L V8 450 hp
Emissions Tier	Undetermined
Engine Serial Number	FFMXH06.7B23
Engine Fuel Type	Diesel

[illegible]

Inspection Report (On-Highway Service Truck)



Inspection Report (On-Highway Service Truck)



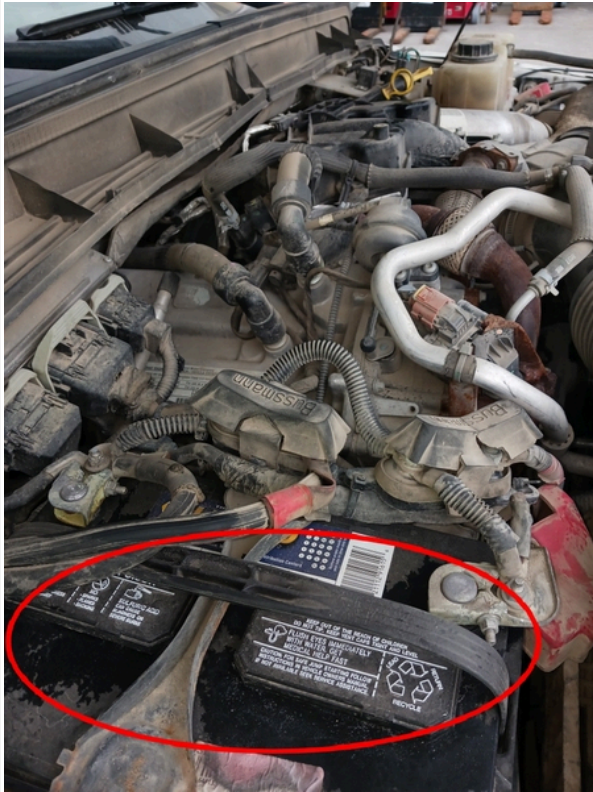
Blow-by (Visual Observation Check)

N/A

Unusual Noises (Upon Start-up, Idle, Shutdown)

No

Inspection Report (On-Highway Service Truck)

Unusual Noise Notes	No unusual noises heard
Engine Smoke (Upon Start-up, Idle, Shutdown)	No
Engine Smoke Notes	No engine smoke issues observed
Engine Exhaust Color	Clear
Battery	3 - Normal Wear & Tear
Battery Condition	Dusty & dirty appearance
Comments	battery had a wet/ moist area on it, but no corrosion was seen.
Battery Condition Photos	 <p>wet appearance on battery but no corrosion was seen</p>


Inspection Report (On-Highway Service Truck)



area on the battery looks wet, but no corrosion was seen

Radiator	3 - Normal Wear & Tear
Radiator Condition	Radiator fins & components appear to be in good working order, no signs of damage or leaks
Belts	3 - Normal Wear & Tear
Belt Condition	Belts appear in good condition & alignment with proper tension
Hoses	3 - Normal Wear & Tear
Hose Condition	Firm, pliant hoses with no signs of wear or leaks
Water Pump	3 - Normal Wear & Tear
Water Pump Condition	No unusual pump noises heard
Cooling System Leaks	No
Coolant Color / Appearance	3 - Normal Wear & Tear
Coolant Color/Appearance Notes	Normal Translucent appearance, no visual signs of contamination
Oil Leaks	Yes
Oil Leak Notes	Wet areas with drops forming due to oil leakage
Comments	on the right side of the engine, a leak was seen.

Inspection Report (On-Highway Service Truck)

Oil Leak Photos	
Oil Color / Appearance	3 - Normal Wear & Tear
Oil Color / Appearance Notes	Appropriate oil level, Other (see comments)
Comments	oil appeared dark in color and that is all
Fuel Leaks	No
Equipped with DPF (Diesel Particulate Filter)	N/A
Requires DEF (Diesel Exhaust Fluid)	Yes
DEF Tank	3 - Normal Wear & Tear
DEF Tank Condition	Area around DEF tank cap is clean, fluid is clear & appears free of contaminants
Overall Engine Appearance	Very dirty, Dusty & dry
Overall Engine Comments	There is a small leak on the right hand side of the engine block located behind the right front tire, oil looked dark but that is all. Other than those issues the engine is in good working condition

Chassis & Drivetrain Inspection Points

On-Highway: Undercarriage Components

Chassis Inspection Points

Chassis Inspection Points	Take photos of all undercarriage and chassis components including frame, suspension, axles, steering, and brake components. Note any damage or wear.
---------------------------	--

Inspection Report (On-Highway Service Truck)

Chassis & Undercarriage Photos



Inspection Report (On-Highway Service Truck)



Inspection Report (On-Highway Service Truck)





Inspection Report (On-Highway Service Truck)



Frame	3 - Normal Wear & Tear
Suspension	3 - Normal Wear & Tear
Steer Axle Condition	3 - Normal Wear & Tear


Inspection Report (On-Highway Service Truck)

Steering Components	3 - Normal Wear & Tear
Steering Component Photos	
	

Inspection Report (On-Highway Service Truck)



Inspection Report (On-Highway Service Truck)

		
Overall Chassis Condition	3 - Normal Wear & Tear	

Drivetrain Inspection Points

Transmission Info (Make/Model)	Ford super duty automatic 6 speed
Transmission	3 - Normal Wear & Tear
Transmission Condition	No unusual noises or vibrations

Inspection Report (On-Highway Service Truck)

Transmission Condition Photos




Inspection Report (On-Highway Service Truck)



PTO	0
Differential	Check condition of the differential(s). Take photos and notes as relevant.
Rear Differential	3 - Normal Wear & Tear

Inspection Report (On-Highway Service Truck)


Rear Differential Condition	Dry housing appearance, no unusual noises heard during operation
Rear Differential Photos	
Front Differential	0
Brake Shoe Thickness	50%

Inspection Report (On-Highway Service Truck)

Brake Shoe Photos



Inspection Report (On-Highway Service Truck)

	
Air Brake System Leaks	N/A
Air Brake Hose Condition	0
Overall Drivetrain Condition	3 - Normal Wear & Tear
Overall Drivetrain Comments	Drivetrain is in good working condition

Wheels & Tires Inspection Points

Wheels & Tires

Wheels & Tires Inspection Points

Wheels & Hub Condition	3
Comments	wheels and hubs are in good condition

Inspection Report (On-Highway Service Truck)

Wheels & Hub Photos




Inspection Report (On-Highway Service Truck)



Wheel Seal Leaks	N/A
Tire Brand	continental
Tire Size	225/70R19.5

Inspection Report (On-Highway Service Truck)

Front Left Tire - Ratio Remaining	50%
Front Left Tire Photos	
Front Right Tire - Ratio Remaining	50%

Inspection Report (On-Highway Service Truck)

Front Right Tire Photos



Rear Right Tire - Ratio Remaining

70%

Inspection Report (On-Highway Service Truck)


Rear Right Tire Photos



Rear Left Tire - Ratio Remaining

70%

Inspection Report (On-Highway Service Truck)

Rear Left Tire Photos	
Additional Axles	Check the condition of all other axles. Specify the position and type of axle. Note any damage or wear. Take photos.

Additional Axle Inspection

Additional Axle

Instructions	Check the condition of additional axle(s), wheels & tires. Note any damage or wear. Take photos.
--------------	--

Additional Inspection Points

Service Truck Body

Additional Inspection Points: Tool Truck

Tool Truck Body	Check the condition of the tool truck bed body, tool boxes (interior and exterior), and lift gate (if equipped).
Bed Body	3
Comments	has rust but is still in good condition

Inspection Report (On-Highway Service Truck)

Bed Body Photos



Inspection Report (On-Highway Service Truck)



Toolboxes

3

Inspection Report (On-Highway Service Truck)

Toolbox Photos



Inspection Report (On-Highway Service Truck)



Inspection Report (On-Highway Service Truck)



Inspection Report (On-Highway Service Truck)



Inspection Report (On-Highway Service Truck)



Inspection Report (On-Highway Service Truck)



Inspection Report (On-Highway Service Truck)



Liftgate Function	0
-------------------	---

Additional Features

Air Compressor Condition	3 - Normal Wear & Tear
Air Compressor Functionality	Not tested
Comments	truck is equipped with an air compressor, but it is not known if the compressor is operational.

Inspection Report (On-Highway Service Truck)

Air Compressor Photos



Inspection Report (On-Highway Service Truck)



Inspection Report (On-Highway Service Truck)



Functional Test

Forward & Reverse	3 - Normal, Operating as Expected
Steering	3 - Normal, Operating as Expected
Brakes	3 - Normal, Operating as Expected
Engine	3 - Normal, Operating as Expected
Controls	3 - Normal, Operating as Expected
Overall Functional Test Comments	The vehicle was functional, and no major issues were detected.
Operating Video	Click to Download

Inspection Summary

Overall Assessment

Exterior Rating	3 - Normal Wear & Tear
Interior Rating	3 - Normal Wear & Tear
Safety Rating	3 - Normal Wear & Tear
Quality Rating	3 - Normal Wear & Tear
Functionality Rating	3 - Normal, Operating as Expected

Inspection Report (On-Highway Service Truck)

Overall Rating	3 - Normal Wear & Tear
What's Great About the Machine	The vehicle is operational and works very well. The A/C works great and so does the radio.
What Needs Work	There is a small leak coming from the right side of the engine block located behind the right front tire.
Date/Time	05-12-2023