



2018 LIGCHINE SPIDERSCREED 3 WHEEL DRIVE-IN CONCRETE SCREED MACHINE / 0

Specifications	
Year	2018
Make	Ligchine
Model	SpiderScreed 3
Date of Inspection	12/19/2023
Location of Inspection	70 Mt Nebo Rd , Orangeburg, NY, 10962
Serial Number	1549
Engine Hours	96
EMS Warning Lights	See Notes
Travel Control	No Damages Observed
Operator's Seat	N/A
Mirrors	N/A
Radio	No
A/C	No
Steering Wheel	N/A
Pedals	N/A
Floorboard	N/A
Power Mirrors	No
Heated Mirrors	No
Switches and Controls	No Damages Observed
Steps	N/A
Handrails	N/A
Oil Dipstick	N/A
Hydraulic Compartment	No Damages Observed
Exhaust	Could Not Be Located
Axles	N/A
Front Left Tire Condition	See Notes
Front Left Tire Brand	Carlisle
Front Left Tire Size	5.70-12
Front Right Tire Condition	No Damages Observed
Front Right Tire Brand	Carlisle
Front Right Tire Size	5.70-12
Rear Tire Condition	No Damages Observed
Rear Tire Brand	Carlisle
Rear Tire Size	5.70-12
Attachments - Blade	No Damages Observed
Attachments - Drill	No Damages Observed

Equipment Photo



Video Inspection Link

<https://app.aspenfieldservices.com/jobs/video/WzdQMsgqnBs7uXynx>

Notes / Description

The machine was not operational so the EMS Warning lights could not be verified. The wheels are rusty and have cement on them. The front left tire is low on air pressure and the wire appears to be stuck in the tire, possibly puncturing the rubber. The wheels are missing the grease cap covers. The auger on the screed is rusty. The hub nut on the front right wheel does not appear to be threaded on all the way.

Aspen Field Services



Front / 12-20-2023



Front Right / 12-20-2023

Aspen Field Services

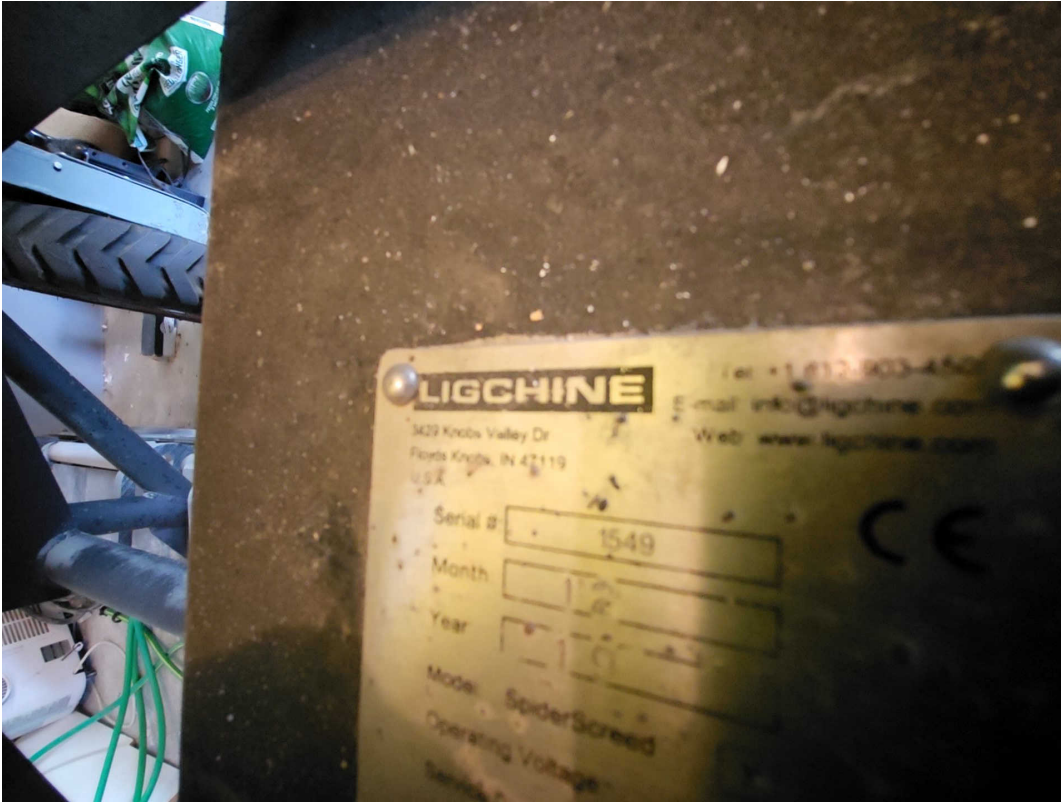


Rear / 12-20-2023



Left / 12-20-2023

Aspen Field Services

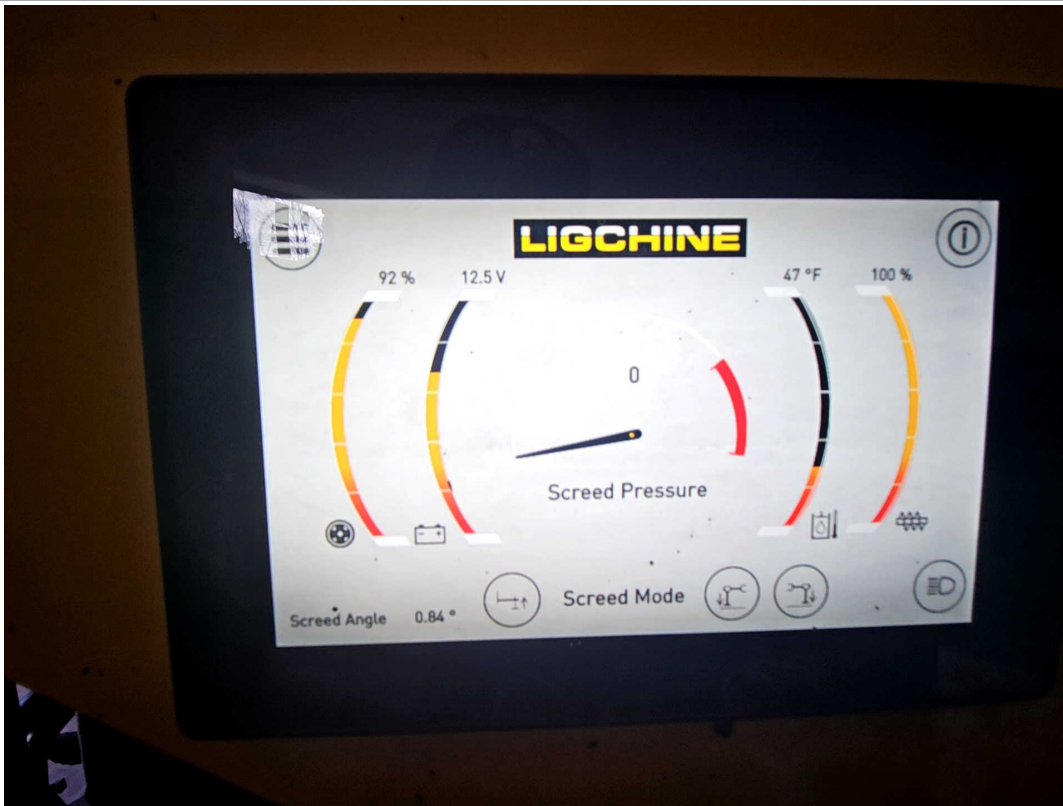


Serial Number: 1549 / 12-19-2023

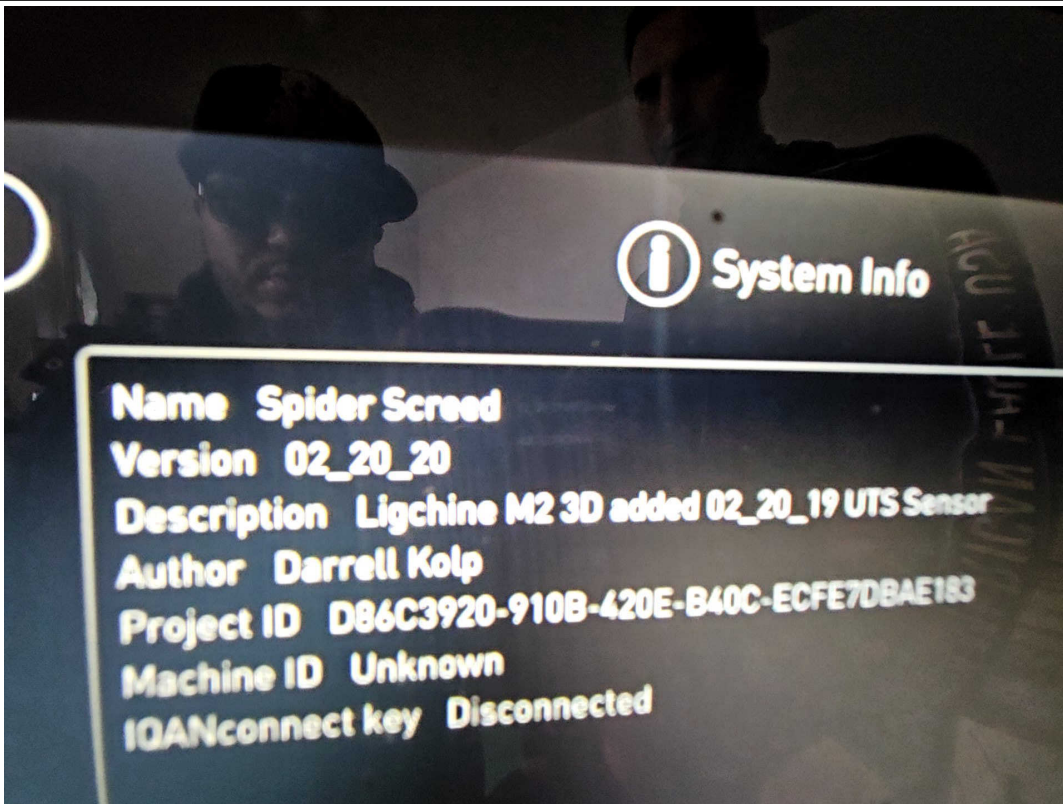


Enginge Hours: 96 / 12-19-2023

Aspen Field Services



Screen / 12-19-2023



Screen / 12-19-2023

Aspen Field Services



Hydraulic Compartment / 12-19-2023



Hydraulic Compartment / 12-19-2023

Aspen Field Services



Oil Dipstick / 12-19-2023



Travel Control / Switches and Controls / 12-19-2023

Aspen Field Services



Front Left Tire Condition / 12-19-2023



Front Left Tire Condition / 12-19-2023

Aspen Field Services



Front Left Tire Brand / 12-19-2023



Front Left Tire Size / 12-19-2023

Aspen Field Services



Front Right Tire Condition / 12-19-2023



Front Right Tire Condition / 12-19-2023

Aspen Field Services



Front Right Tire Brand / 12-19-2023



Front Right Tire Size / 12-19-2023

Aspen Field Services



Rear Tire Condition / 12-19-2023



Rear Tire Condition / 12-19-2023

Aspen Field Services



Rear Tire Brand / 12-19-2023



Rear Tire Size / 12-19-2023

Aspen Field Services



Attachments - Blade / 12-20-2023



Attachments - Drill / 12-20-2023