

2007 GENIE Z45/25J ARTICULATING / 0

Specifications	
Year	2007
Make	GENIE
Model	Z-45/25
Date of Inspection	02/23/2024
Location of Inspection	500 Napa Valley Dr, Little Rock, Arkansas 72211
Serial Number	Z452507-33527
Cylinders	Good Condition
Engine Hours	Obstructed
EMS Warning Lights	No Active Warnings
Travel Control	No Damages Observed
Operator's Seat	N/A
Mirrors	N/A
Radio	N/A
A/C	N/A
Steering Wheel	N/A
Pedals	No Damages Observed
Floorboard	No Damages Observed
Power Mirrors	N/A
Heated Mirrors	N/A
Switches and Controls	See Notes
Steps	N/A
Handrails	N/A
Oil Level	Good Level
Engine Compartment	See Notes
Exhaust Pipe	See Notes
Axles	No Damages Observed
Deluxe Instrumentation	N/A
Backup Camera	N/A
ROPS	N/A
Front Lights	N/A
Rear Lights	N/A
Rear Left Tire Condition	No Damages Observed
Rear Left Tire Brand	Outrigger
Rear Left Tire Size	355/55D625
Front Left Tire Condition	See Notes
Front Left Tire Brand	Outrigger
Front Left Tire Size	355/55D625
Front Right Tire Condition	No Damages Observed
Front Right Tire Brand	Outrigger
Front Right Tire Size	355/55D625
Rear Right Tire Condition	See Notes
Rear Right Tire Brand	Outrigger

Equipment Photo



Video Inspection Link

<https://app.aspenfieldservices.com/jobs/video/wJuQjkJXi2jmTBrr4>

Notes / Description

The engine hour gauge glass is damaged. The operator's basket, controls, and consul have stucco and paint covering. The decals for the operator station are cracked. The basket paint is peeling, with rust forming underneath. The entry safety bar is bent. The exhaust pipe is slightly damaged at the tip and leaking after the muffler. The engine bay platform paint is peeling. The front left tire is gouged on the side within the treads. The rear right tire is gouged on the tread.



Aspen Field Services

Job #: 68001 /

VIN: Z452507-33527

Rear Right Tire Size	355/55D625
----------------------	------------

Aspen Field Services



Front Left / 02-26-2024



Left / 02-26-2024

Aspen Field Services



Rear Left / 02-26-2024



Rear / 02-26-2024

Aspen Field Services



Rear Right / 02-26-2024



Right / 02-26-2024

Aspen Field Services

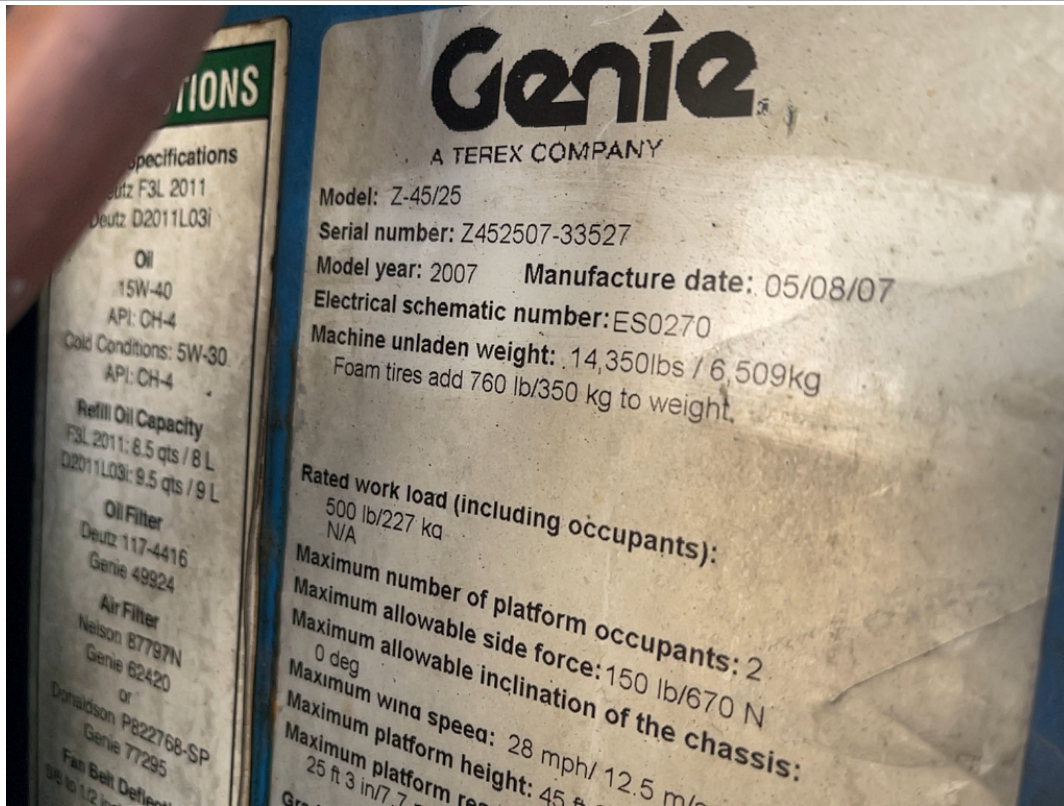


Front Right / 02-26-2024



Front / 02-26-2024

Aspen Field Services



Serial Number: Z452507-33527 / 02-26-2024



Cylinders / 02-26-2024

Aspen Field Services



Cylinders / 02-26-2024



Cylinders / 02-26-2024

Aspen Field Services



Cylinders / 02-26-2024



Engine Hours / 02-26-2024

Aspen Field Services



Switches and Controls / Travel Control / 02-26-2024



Switches and Controls / Travel Control / 02-26-2024

Aspen Field Services



Switches and Controls / Travel Control / 02-26-2024



Switches and Controls / EMS Warning Lights / 02-26-2024

Aspen Field Services

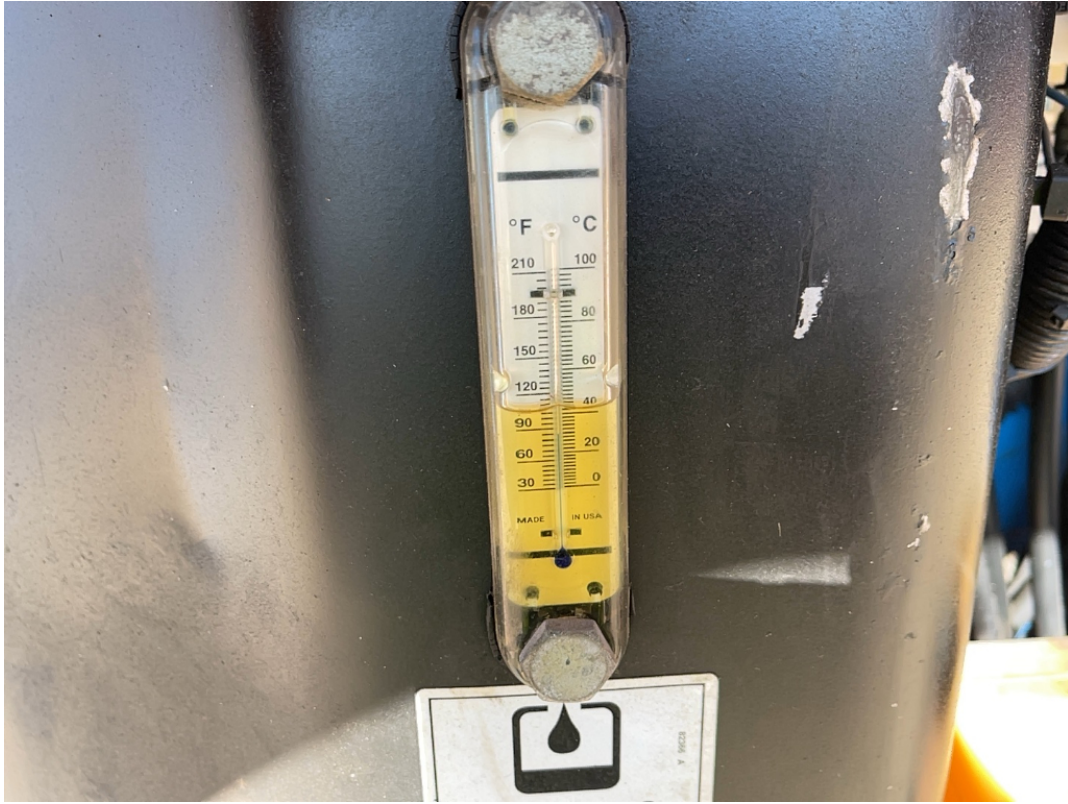


Pedals / 02-26-2024



Floorboard / 02-26-2024

Aspen Field Services

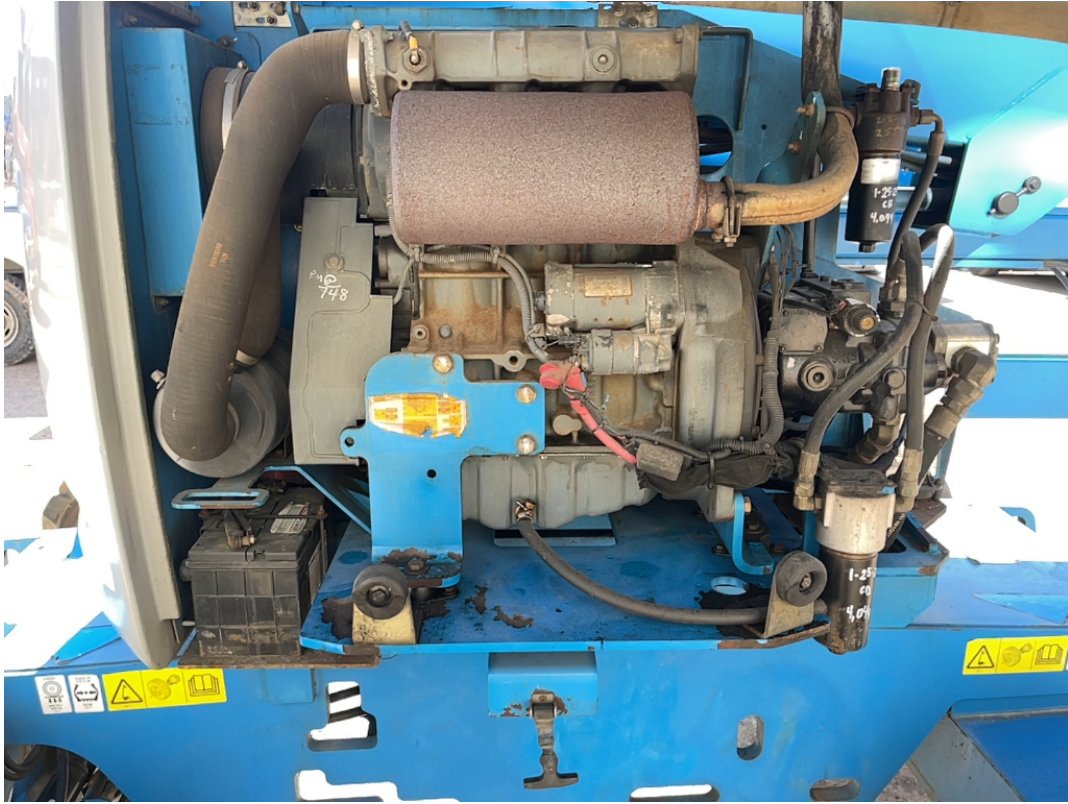


Oil Level / 02-26-2024



Hydraulics / 02-26-2024

Aspen Field Services



Engine Compartment / 02-26-2024



Engine Compartment / 02-26-2024

Aspen Field Services



Battery / 02-26-2024



Exhaust Pipe / 02-26-2024

Aspen Field Services



Axles / 02-26-2024



Axles / Cylinders / 02-26-2024

Aspen Field Services



Axles / 02-26-2024



Axles / Cylinders / 02-26-2024

Aspen Field Services



Axles / 02-26-2024



Axles / 02-26-2024

Aspen Field Services



Rear Left Tire Condition / 02-26-2024



Rear Left Tire Condition / 02-26-2024

Aspen Field Services



Rear Left Tire Brand / 02-26-2024



Rear Left Tire Size / 02-26-2024

Aspen Field Services



Front Left Tire Condition / 02-26-2024



Front Left Tire Condition / 02-26-2024

Aspen Field Services



Front Left Tire Brand / 02-26-2024



Front Left Tire Size / 02-26-2024

Aspen Field Services



Front Right Tire Condition / 02-26-2024



Front Right Tire Condition / 02-26-2024

Aspen Field Services



Front Right Tire Brand / 02-26-2024



Front Right Tire Size / 02-26-2024

Aspen Field Services



Rear Right Tire Condition / 02-26-2024



Rear Right Tire Condition / 02-26-2024

Aspen Field Services



Rear Right Tire Brand / 02-26-2024



Rear Right Tire Size / 02-26-2024