

2019 KUBOTA KX-80 / 0

Specifications	
Year	2019
Make	Kubota
Model	KX-80
Date of Inspection	03/27/2024
Location of Inspection	20595 Eigg Road, Alexandria, Ontario, K0C1A0
Serial Number	JKUK0804C01H46929
Cylinders	No Damages Observed
Engine Hours	2,479
EMS Warning Lights	No Active Warnings
Travel Control	No Damages Observed
Operator's Seat	See Notes
Mirrors	No Damages Observed
Radio	No
A/C	Yes
Steering Wheel	N/A
Pedals	No Damages Observed
Floorboard	No Damages Observed
Power Mirrors	No
Heated Mirrors	No
Switches and Controls	See Notes
Steps	No Damages Observed
Handrails	No Damages Observed
Oil Dipstick	Good Level / Good Color
Engine Compartment	See Notes
Exhaust	See Notes
Axles	N/A
Deluxe Instrumentation	No Damages Observed
Backup Camera	N/A
ROPS	See Notes
Front Lights	No Damages Observed
Rear Lights	No Damages Observed
Left Track Condition	No Damages Observed
Left Track Brand	Q-Track
Left Track Size	450X81SNX78
Left Track Tread Depth Measurement	30/32"
Right Track Condition	See Notes
Right Track Brand	Q-Track
Right Track Size	450X81SNX78
Right Track Tread Depth Measurement	29/32"
Attachments - Bucket	See Notes

Equipment Photo



Video Inspection Link

<https://app.aspenfieldservices.com/jobs/video/CKyNW7CE7iatN2Dhm>

Notes / Description

The unit runs and drives. The window brake tool is missing in the cab. A piece of exterior molding is missing on the right side of the cab by the window. The rear of the bucket appears to have dents and a dent. The rear engine hood appears to have a small dent in it. The backfill blade has a couple of small dents on the top lip. The operator's seat bottom cushion appears to be dirty and stained. The control box in the cab on the right rear has been broken and taped back together. The cover around the exhaust in the engine compartment is rusty. The radiator fins appear to be a little bit dirty. The right track has a gouge on the inside face of the rubber, and the tread lugs have small cuts in them. The left track has a small gouge in the tread lug.



Aspen Field Services

Job #: 69773 /

VIN: JKUK0804C01H46929

Aspen Field Services



Front Left / 03-28-2024



Front / 03-27-2024

Aspen Field Services



Front Right / 03-27-2024



Right / 03-27-2024

Aspen Field Services



Rear Right / 03-27-2024



Rear / 03-27-2024

Aspen Field Services



Rear Left / 03-27-2024



Left / 03-27-2024

Aspen Field Services



Attachments / 03-27-2024



Serial Number:JKUK0804C01H46929 / 03-27-2024

Aspen Field Services



Attachments / 03-27-2024



Attachments / 03-27-2024

Aspen Field Services



Attachments / 03-27-2024



Attachments / 03-27-2024

Aspen Field Services



Connections / 03-27-2024



Connections / 03-27-2024

Aspen Field Services



Cylinders / 03-27-2024



Cylinders / 03-27-2024

Aspen Field Services



Cylinders / 03-27-2024



Cylinders / 03-27-2024

Aspen Field Services



Cylinders / 03-27-2024



Cylinders / 03-27-2024

Aspen Field Services



Cylinders / 03-27-2024



Cylinders / 03-27-2024

Aspen Field Services



Cylinders / 03-27-2024



ROPS / Front Lights / 03-27-2024

Aspen Field Services



ROPS / Mirrors / 03-27-2024



Mirrors / ROPS / 03-27-2024

Aspen Field Services



Exhaust / Mirrors / Rear Lights / 03-27-2024



ROPS / 03-27-2024

Aspen Field Services



Mirrors / 03-27-2024



Mirrors / 03-27-2024

Aspen Field Services



Operator's Seat / 03-27-2024



Operator's Seat / 03-27-2024

Aspen Field Services



Pedals / Floorboard / 03-27-2024



Pedals / Floorboard / 03-28-2024

Aspen Field Services



Switches and Controls / Travel Control / Deluxe Instrumentation / 03-27-2024



A/C / Switches and Controls / 03-27-2024

Aspen Field Services



Switches and Controls / 03-27-2024



Travel Control / 03-27-2024

Aspen Field Services



Cab Interior / 03-27-2024

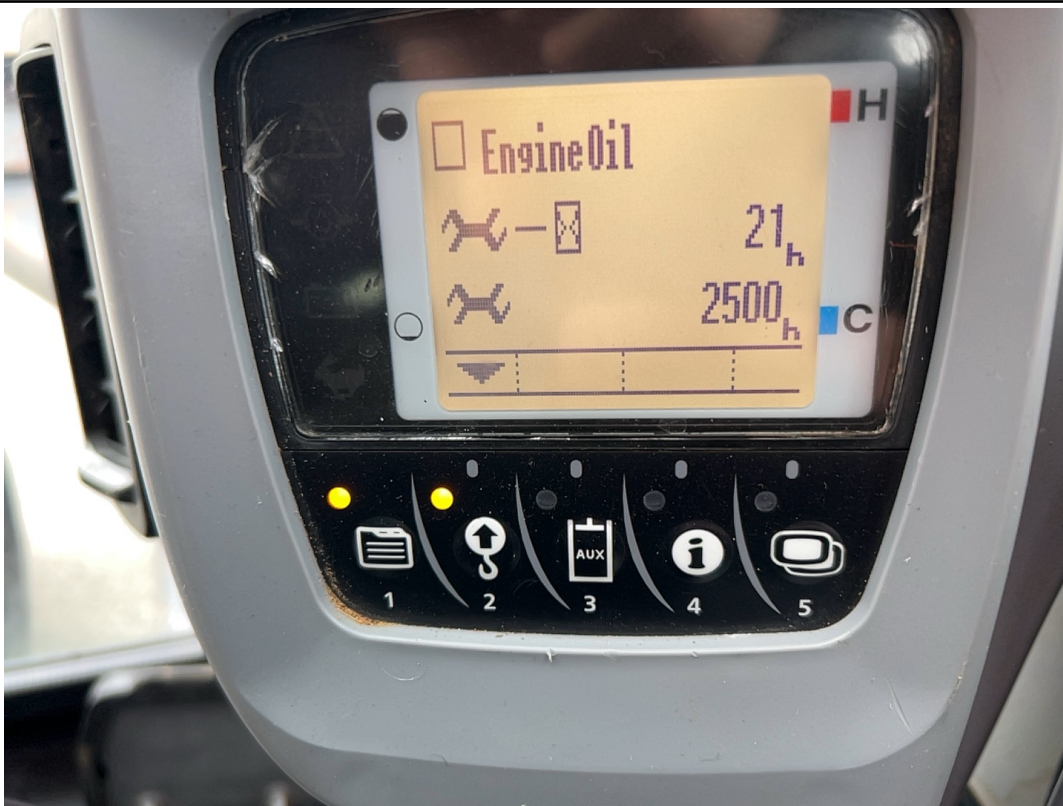


Engine Hours: 2,479 / 03-27-2024

Aspen Field Services



EMS Warning Lights / 03-27-2024



EMS Warning Lights / 03-27-2024

Aspen Field Services



EMS Warning Lights / 03-27-2024



EMS Warning Lights / 03-27-2024

Aspen Field Services

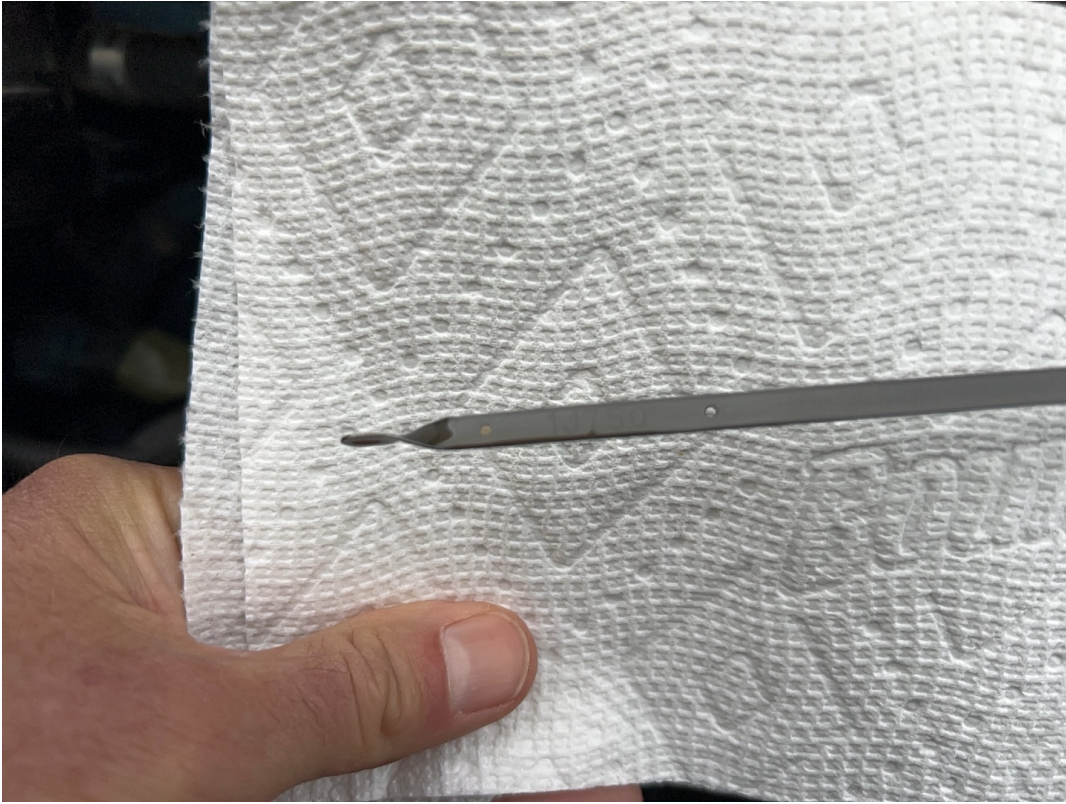


Pedals / 03-28-2024



Engine Compartment / Exhaust / 03-27-2024

Aspen Field Services

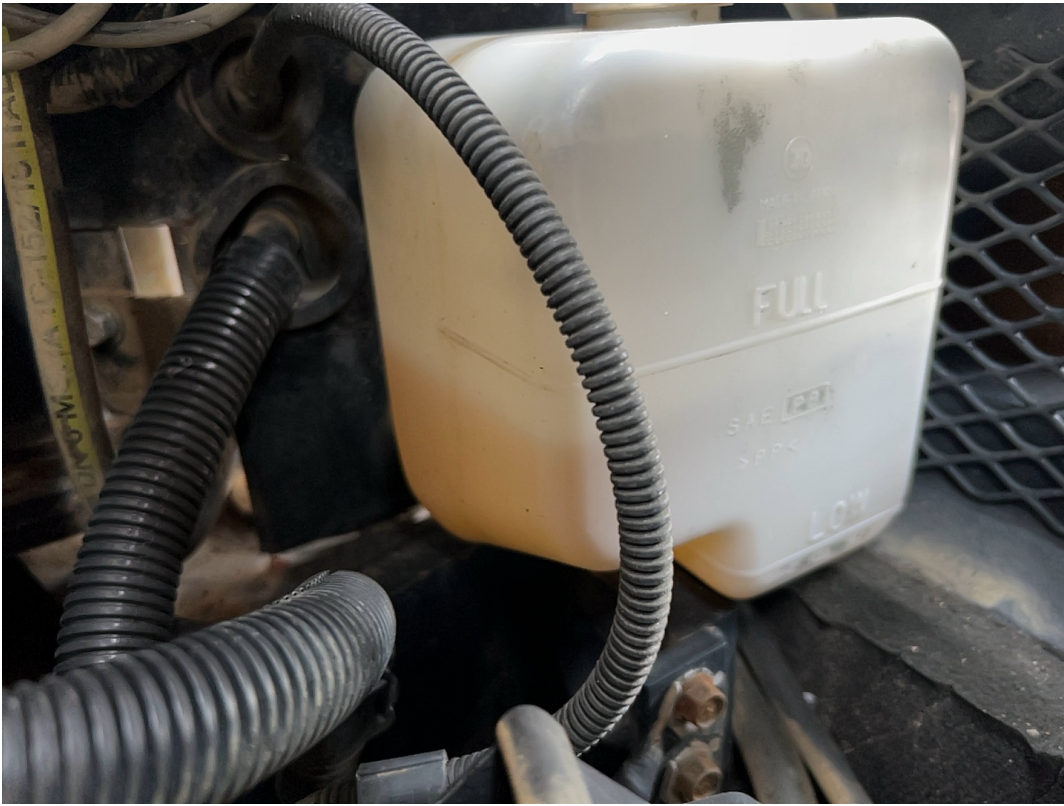


Oil Dipstick / 03-27-2024



Coolant Level / 03-27-2024

Aspen Field Services



Coolant Level / 03-27-2024



Coolant Level / 03-27-2024

Aspen Field Services



Coolant Level / 03-27-2024



Coolant Level / 03-28-2024

Aspen Field Services



Fuel Filter Housing / 03-27-2024

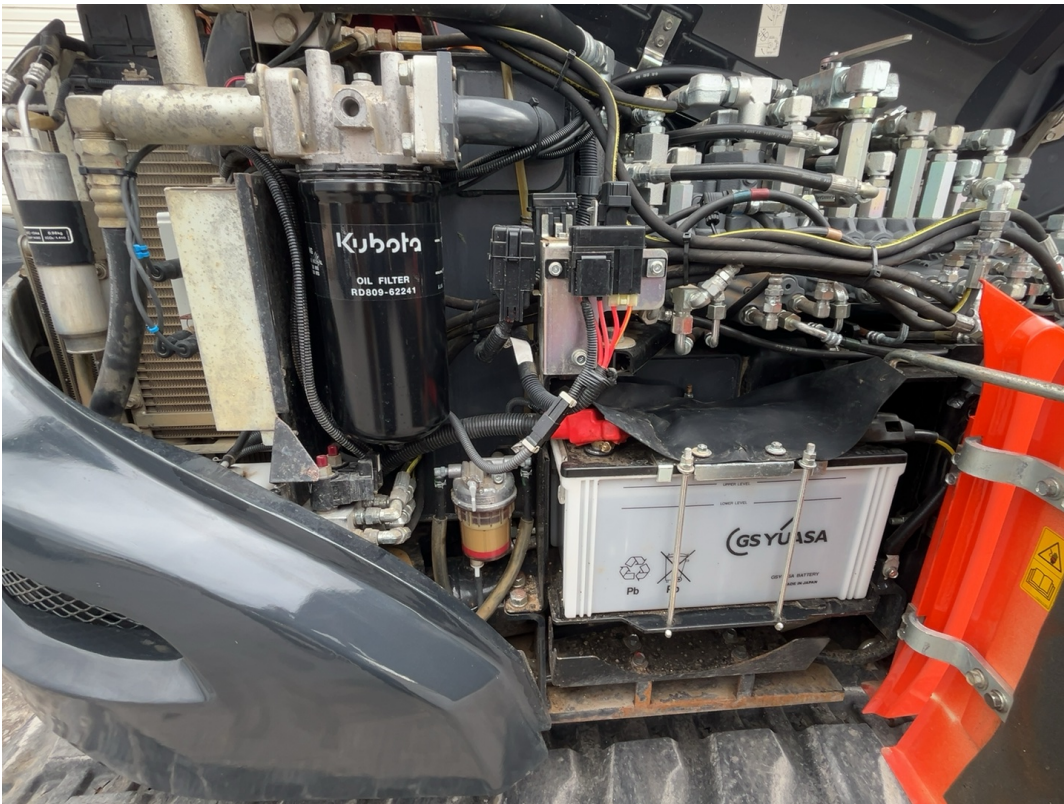


Engine Compartment / 03-27-2024

Aspen Field Services



Engine Compartment / Exhaust / 03-27-2024



Engine Compartment / 03-27-2024

Aspen Field Services

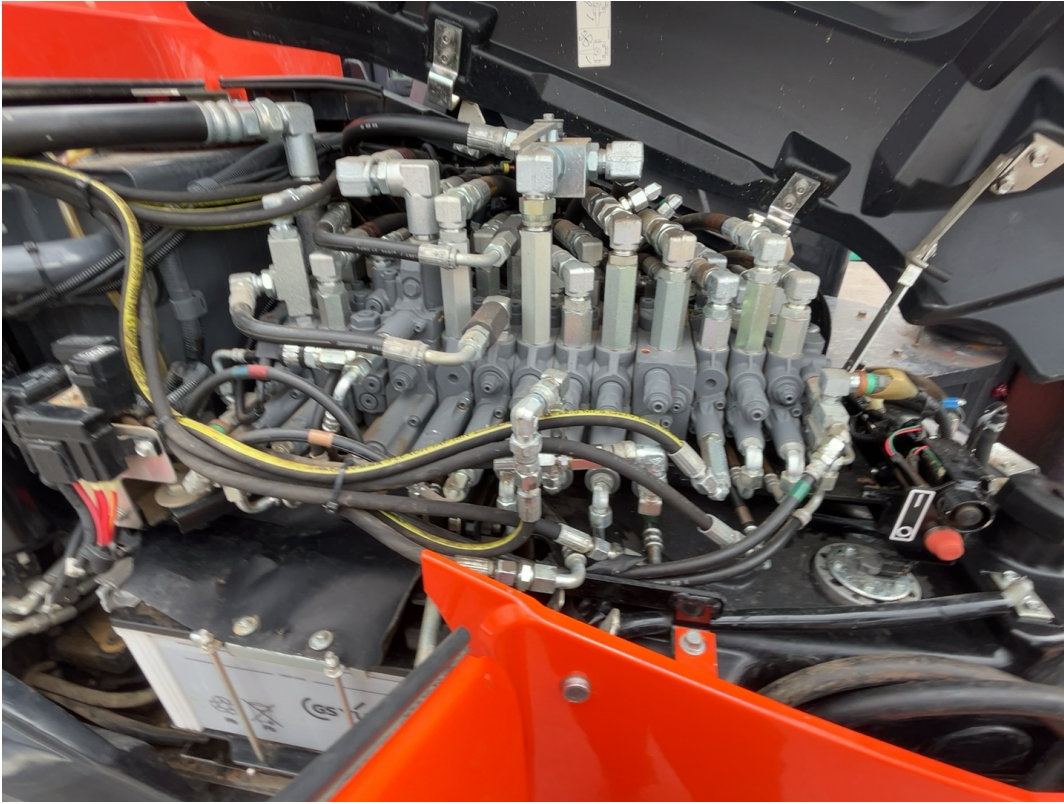


Battery / 03-27-2024

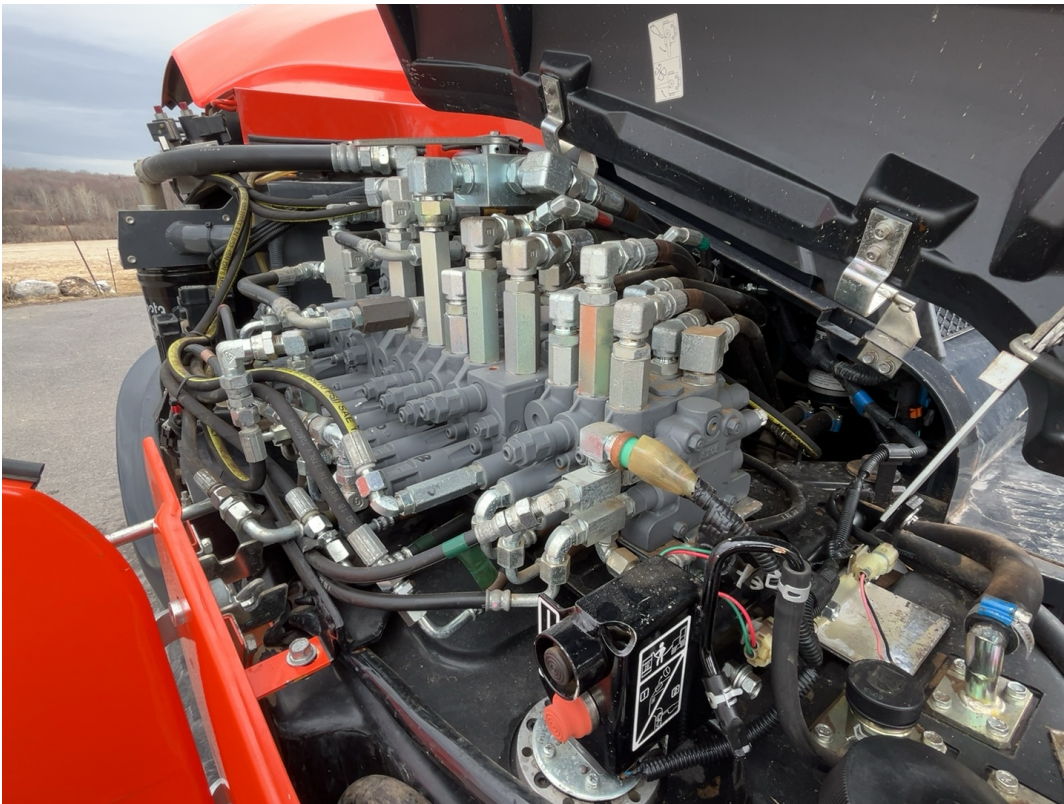


Battery / 03-27-2024

Aspen Field Services

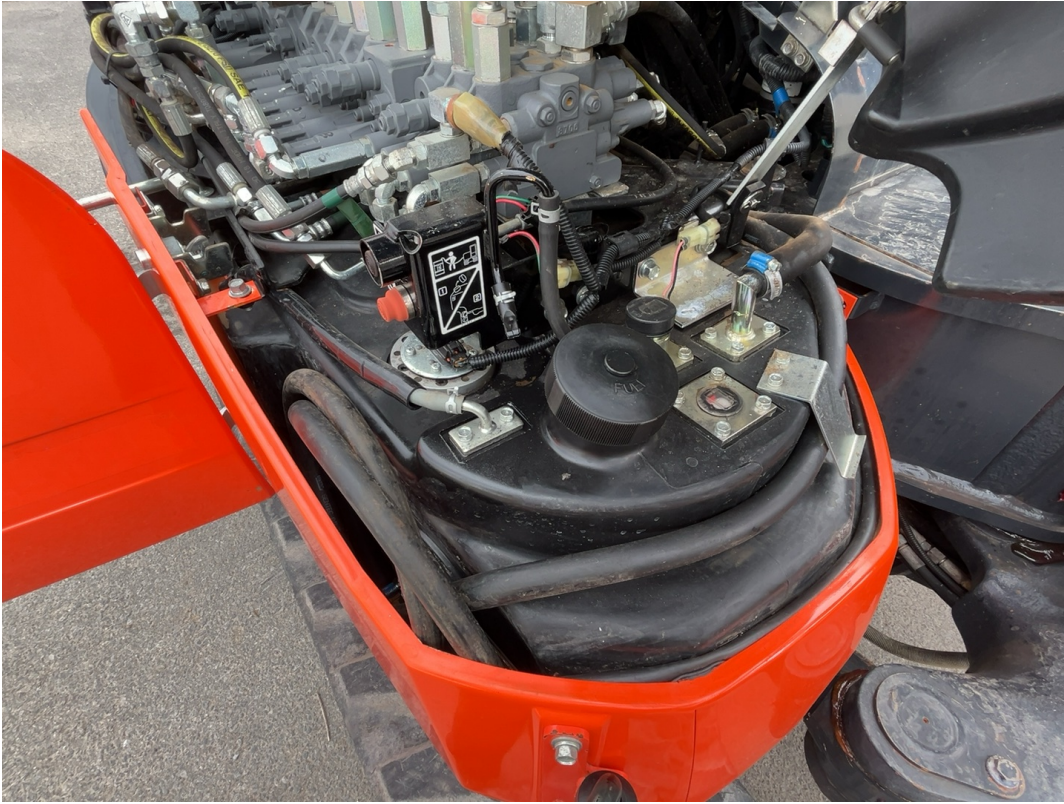


Hydraulics / 03-27-2024



Hydraulics / 03-27-2024

Aspen Field Services



Fuel Tank / 03-27-2024



Hydraulic Compartment / 03-27-2024

Aspen Field Services



Engine Information / 03-27-2024



Exhaust Pipe / 03-27-2024

Aspen Field Services



Exhaust Pipe / 03-27-2024



Steps / 03-27-2024

Aspen Field Services



Engine Serial Plate / 03-27-2024



Front Lights / 03-27-2024

Aspen Field Services



Rear Lights / 03-27-2024



Rear Lights / 03-27-2024

Aspen Field Services



Handrails / 03-27-2024



Right Track Condition / 03-27-2024

Aspen Field Services



Right Track Condition / 03-27-2024



Right Track Condition / 03-27-2024

Aspen Field Services



Right Sprocket Wheel / 03-27-2024



Right Track Condition / 03-27-2024

Aspen Field Services



Left Track Brand / Left Track Size / 03-28-2024

Aspen Field Services



Right Track Brand / Right Track Size / 03-27-2024



Left Track Condition / 03-27-2024

Aspen Field Services



Left Track Condition / 03-27-2024



Left Sprocket Wheel / 03-27-2024

Aspen Field Services



Left Track Depth Measurement / 03-28-2024



Right Track Depth Measurement / 03-28-2024