

2015 SNORKEL A46JE / 0

Specifications	
Year	2015
Make	Snorkel
Model	A46JE
Date of Inspection	04/09/2024
Location of Inspection	4710 Salina St, Pulaski, NY, 13142
Serial Number	A46JE-04-000112
Engine Hours	348
EMS Warning Lights	No Active Warnings
Travel Control	No Damages Observed
Operator's Seat	N/A
Mirrors	N/A
Radio	No
A/C	No
Steering Wheel	N/A
Pedals	No Damages Observed
Floorboard	No Damages Observed
Power Mirrors	No
Heated Mirrors	No
Switches and Controls	No Damages Observed
Steps	N/A
Handrails	No Damages Observed
Oil Dipstick	N/A
Hydraulic Compartment	See Notes
Exhaust	N/A
Axles	No Damages Observed
ROPS	N/A
Front Lights	N/A
Rear Lights	N/A
Front Left Tire Condition	See Notes
Front Left Tire Brand	OTR
Front Left Tire Size	IN240/55D17.5
Rear Left Tire Condition	No Damages Observed
Rear Left Tire Brand	OTR
Rear Left Tire Size	IN240/55D17.5
Front Right Tire Condition	See Notes
Front Right Tire Brand	Could Not Be Located
Front Right Tire Size	IN240/55D17.5
Rear Right Tire Condition	See Notes
Rear Right Tire Brand	OTR
Rear Right Tire Size	IN240/55D17.5
Attachments - Basket	No Damages Observed

Equipment Photo



Video Inspection Link

<https://app.aspenfieldservices.com/jobs/video/HdQXLXd3xMam5F9cS>

Notes / Description

The unit runs and drives. The left lower cover has paint worn off. The compartment where the hydraulic tank is located appears to be oily, and the hydraulic hose going to the tank seems to be leaking. The hydraulic compartment area is full of leaves and debris. The control station in the basket is missing retainer screws and the speed control knob. The decal has cracks on the control station. The front left tire has a gouge in the sidewall. The front right tire appears to have screws and cuts in the tire treads. The rear right tire's treads are gouged and some of the rubber is missing on the lugs. The operator appeared to have some trouble moving the unit with the controls in the basket or could have been operator error in the operational video. The travel and operation alarms could only be heard during a part of the operation.

Aspen Field Services



Front Left / 04-09-2024



Front / 04-09-2024

Aspen Field Services



Front Right / 04-09-2024



Right / 04-09-2024

Aspen Field Services



Rear Right / 04-09-2024



Rear / 04-09-2024

Aspen Field Services

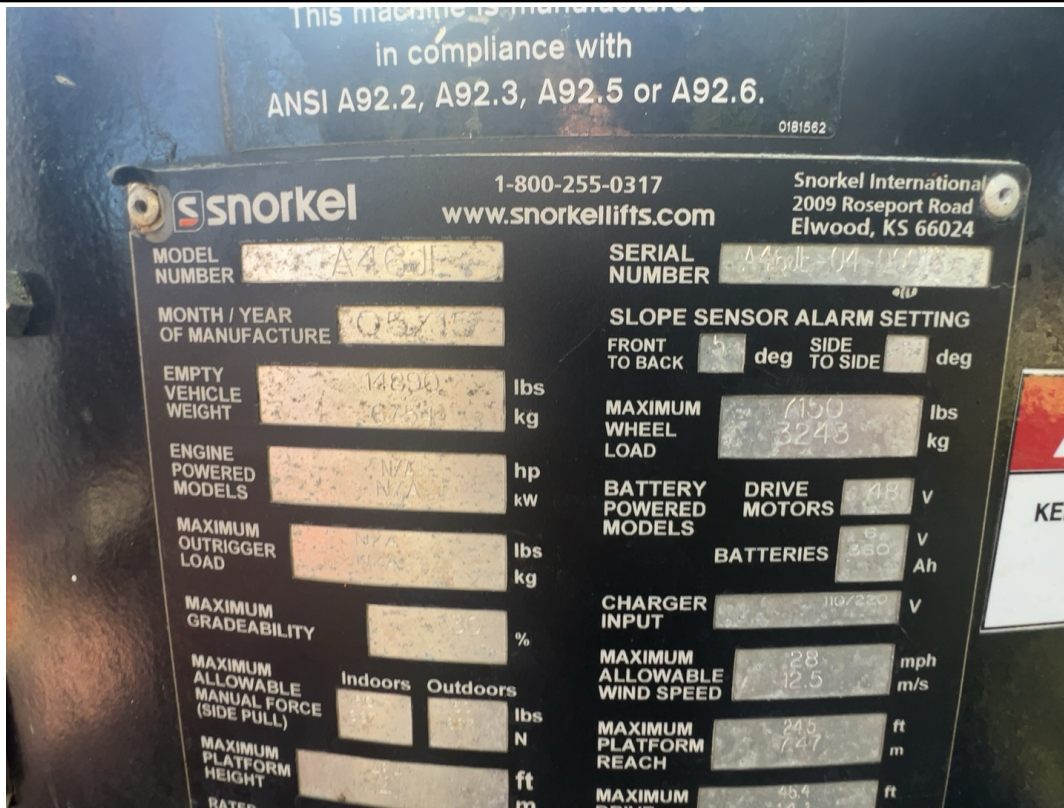


Rear Left / 04-09-2024

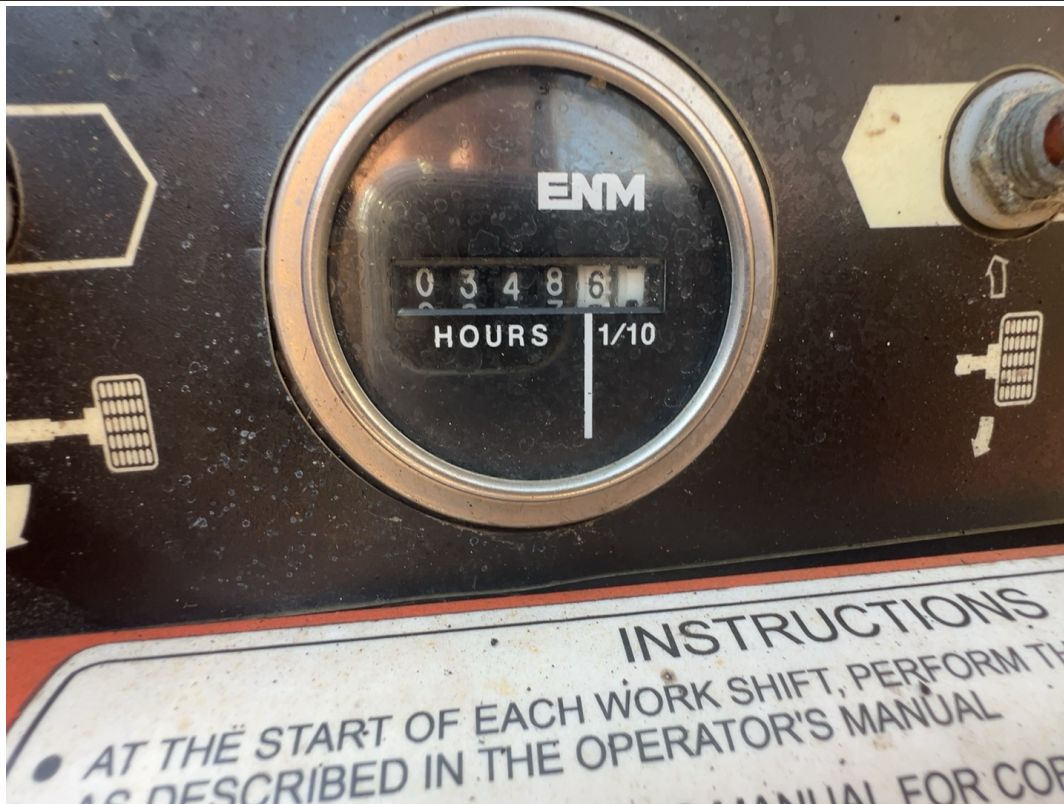


Left / 04-09-2024

Aspen Field Services

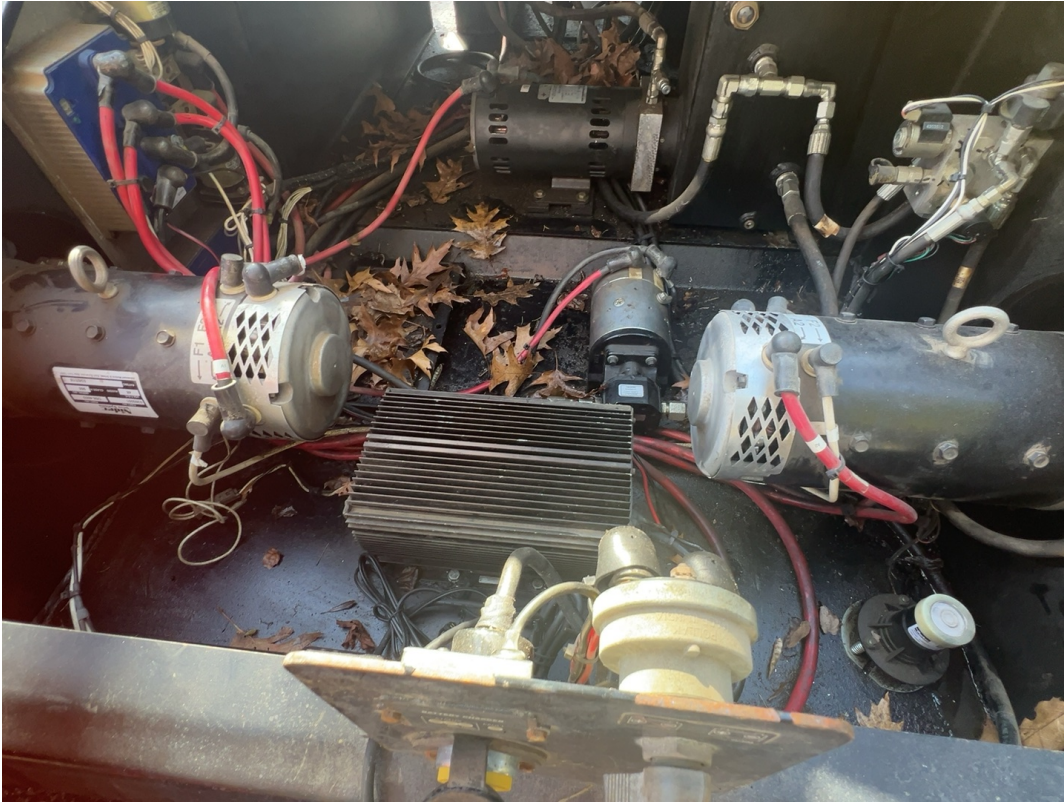


Serial Number: A46JE-04-000112 / 04-09-2024



Engine Hours: 348 / 04-09-2024

Aspen Field Services



Hydraulic Compartment / 04-09-2024



Hydraulic Compartment / 04-09-2024

Aspen Field Services



Battery Compartment / 04-09-2024



Battery Compartment / 04-09-2024

Aspen Field Services



Switches and Controls / 04-09-2024



Switches and Controls / EMS Warning Lights / Travel Control / 04-09-2024

Aspen Field Services



Pedals / 04-09-2024



Handrails / Floorboard / Attachments / 04-09-2024

Aspen Field Services



Attachments / 04-09-2024



Attachments / 04-09-2024

Aspen Field Services



Safety Equipment / 04-09-2024



Safety Equipment / 04-09-2024

Aspen Field Services



Rear Left / 04-09-2024



Model Information / 04-09-2024

Aspen Field Services



Axles / 04-09-2024



Axles / 04-09-2024

Aspen Field Services



Axles / 04-09-2024



Axles / 04-09-2024

Aspen Field Services



Front Left Tire Condition / Front Left Tire Brand / 04-09-2024



Front Left Tire Size / 04-09-2024

Aspen Field Services



Front Left Tire Condition / 04-09-2024



Front Right Tire Condition / 04-09-2024

Aspen Field Services



Front Right Tire Condition / 04-09-2024



Front Right Tire Size / 04-10-2024

Aspen Field Services



Rear Right Tire Condition / Rear Right Tire Brand / 04-09-2024



Rear Right Tire Size / 04-09-2024

Aspen Field Services



Rear Right Tire Condition / 04-09-2024



Rear Left Tire Condition / Rear Left Tire Brand / 04-09-2024

Aspen Field Services



Rear Left Tire Size / 04-09-2024



Rear Left Tire Condition / 04-09-2024