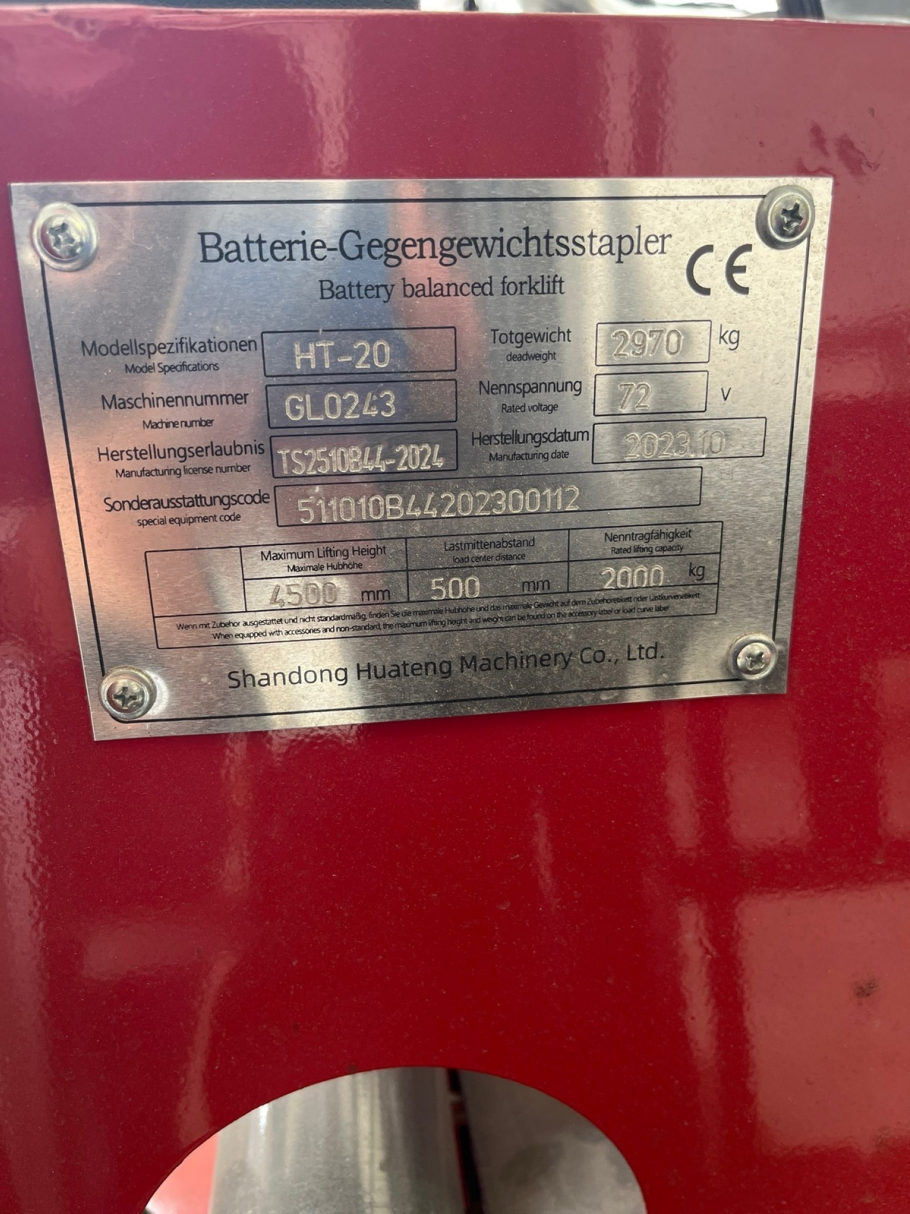


Seller Onboarded Machine

General Info

| | |
|-----------------------------------|---|
| B&B Stock Number | A6464276 |
| Category | Forklift |
| Year | 2023 |
| Make | HuaTeng |
| Model | HT-20 |
| Serial Number / VIN | GL0243 |
| Serial Number Plate / VIN Sticker |  |
| | 05-21-2024 12:05 PM |
| Hour Meter Reading | 0 |

Seller Onboarded Machine

| | |
|------------------|---|
| Hour Meter Photo |  |
| | 05-21-2024 12:04 PM |

Dimensions

| | |
|--------------------------------|----|
| Overall Length (ft and inches) | NA |
| Overall Width (ft and inches) | NA |
| Overall Height (ft and inches) | NA |

Off Highway Equipment

| | |
|----------------------|------------------|
| Travel System | Wheels & Tires |
| Drive Type | 4X2 |
| Fuel Type | Electric |
| Control Station Type | Open Cab (OROPS) |

Seller Onboarded Machine

| | |
|-------------------|------------------|
| Operator Controls | Electrohydraulic |
| A/C | No |
| Heat | No |
| Radio | No |
| Reverse Camera | No |

Forklift

| | |
|-------------------------|----------|
| Forks | Yes |
| Length x Width (inches) | 48 X 4 |
| Max Lift Height | 14.7 ft |
| Max Lift Capacity | 4400 |
| Engine Type | Electric |
| Wheel Type | Solid |
| Side Shift | No |
| Mast Tilt | Yes |
| Fork Positioner | No |
| Charger Included | Yes |

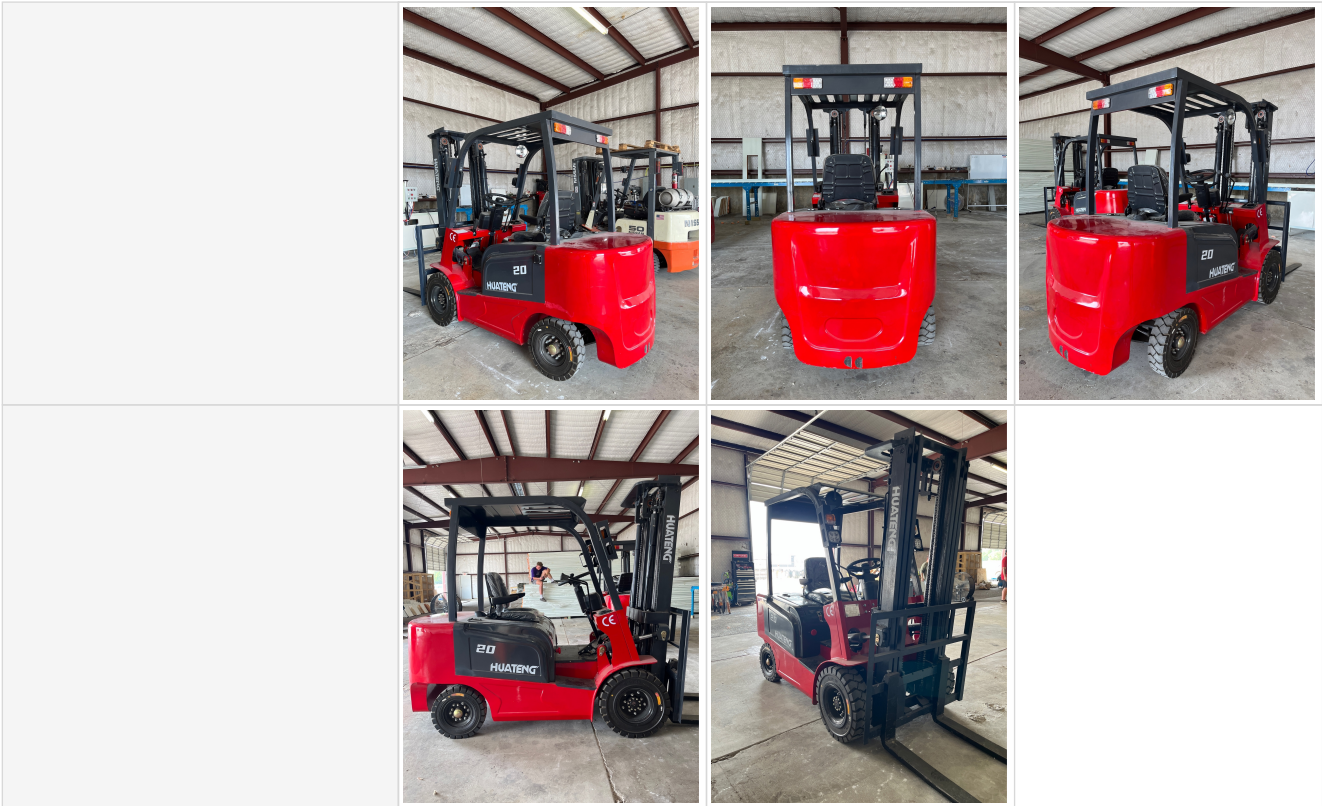
Other Features & Attachments

| | |
|-------------------------------------|----|
| OMM (Operator & Maintenance Manual) | No |
|-------------------------------------|----|

360 Walkaround Photos

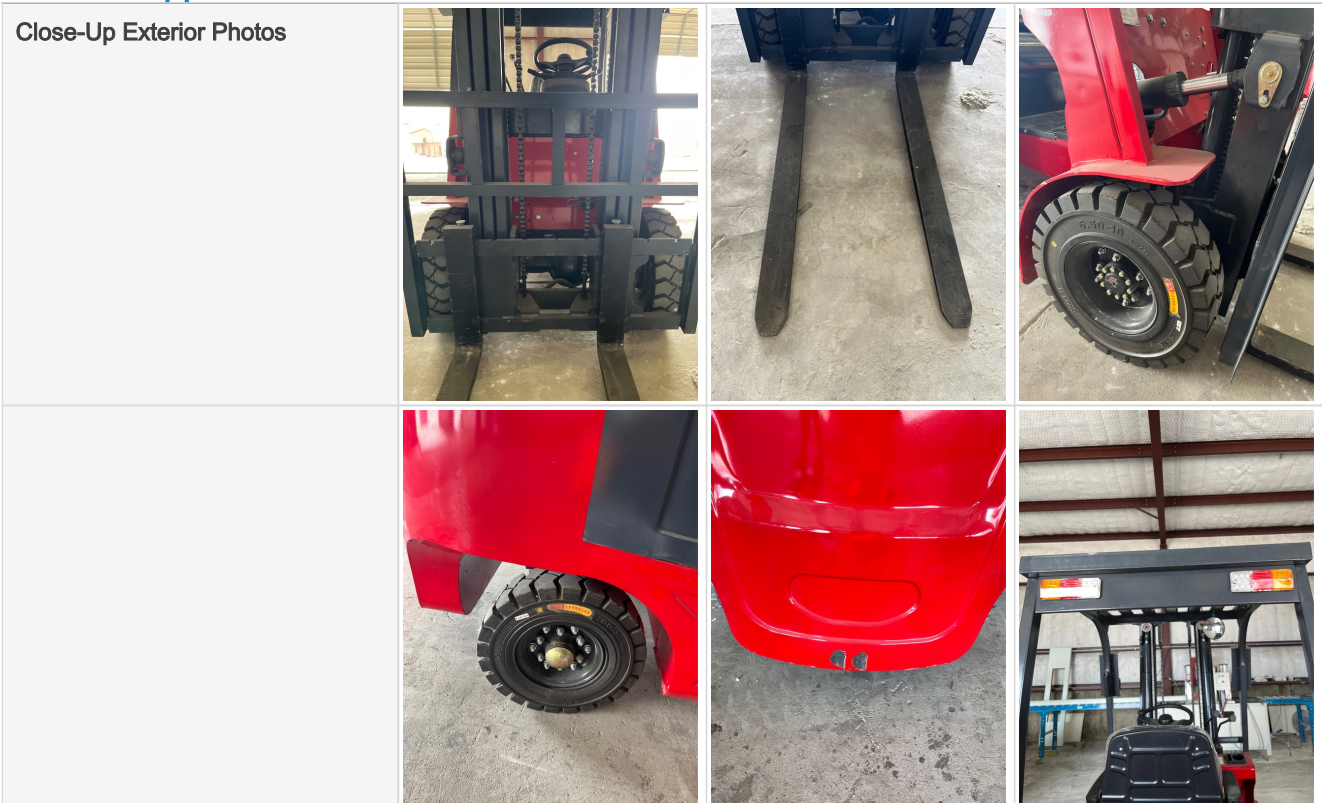
| | | | |
|-----------------------------------|---|--|---|
| <p>Exterior Walkaround Photos</p> |  |  |  |
|-----------------------------------|---|--|---|

Seller Onboarded Machine

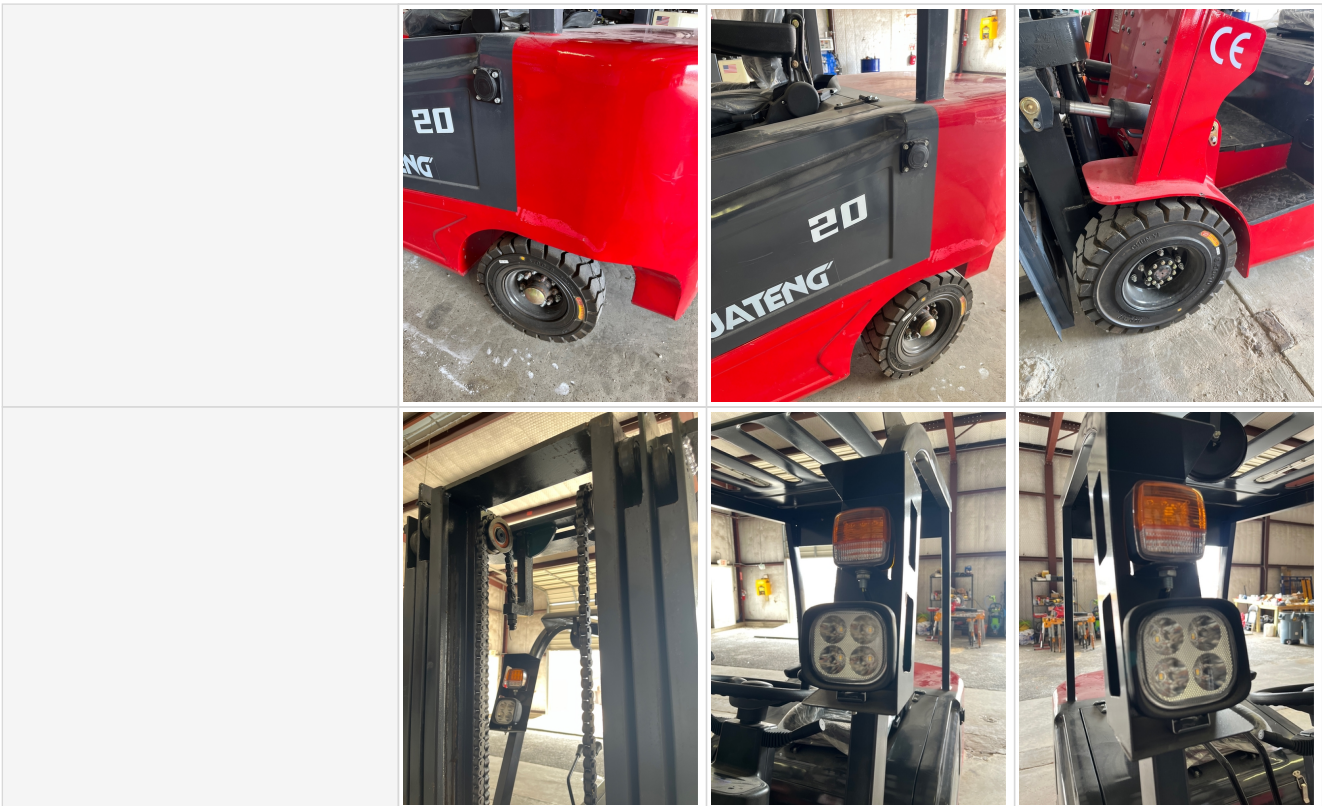


General Appearance

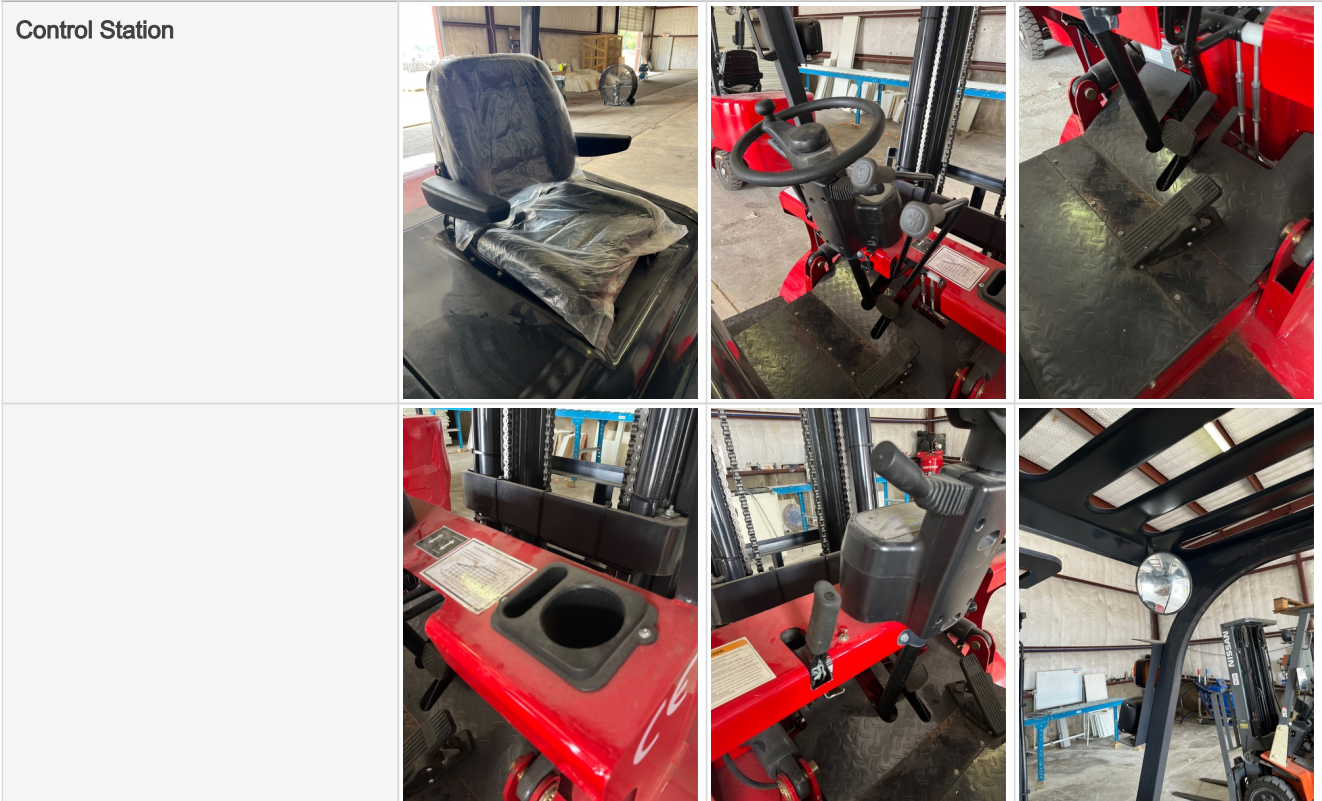
Close-Up Exterior Photos



Seller Onboarded Machine

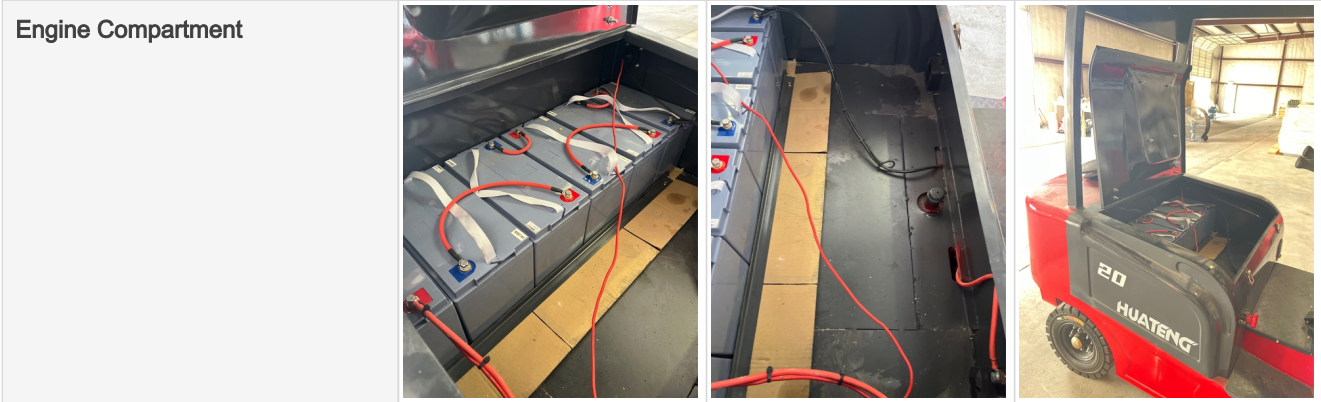


Control Station

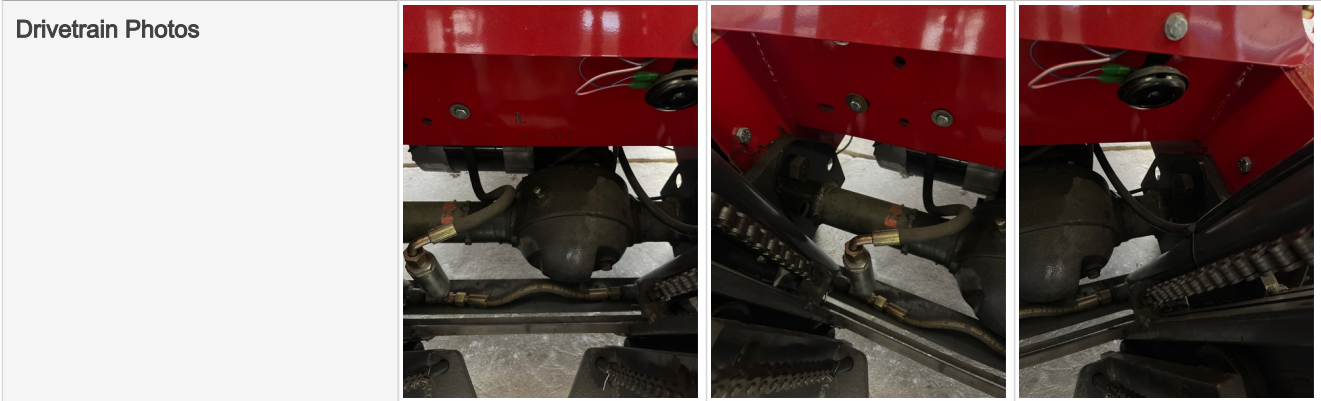


Engine

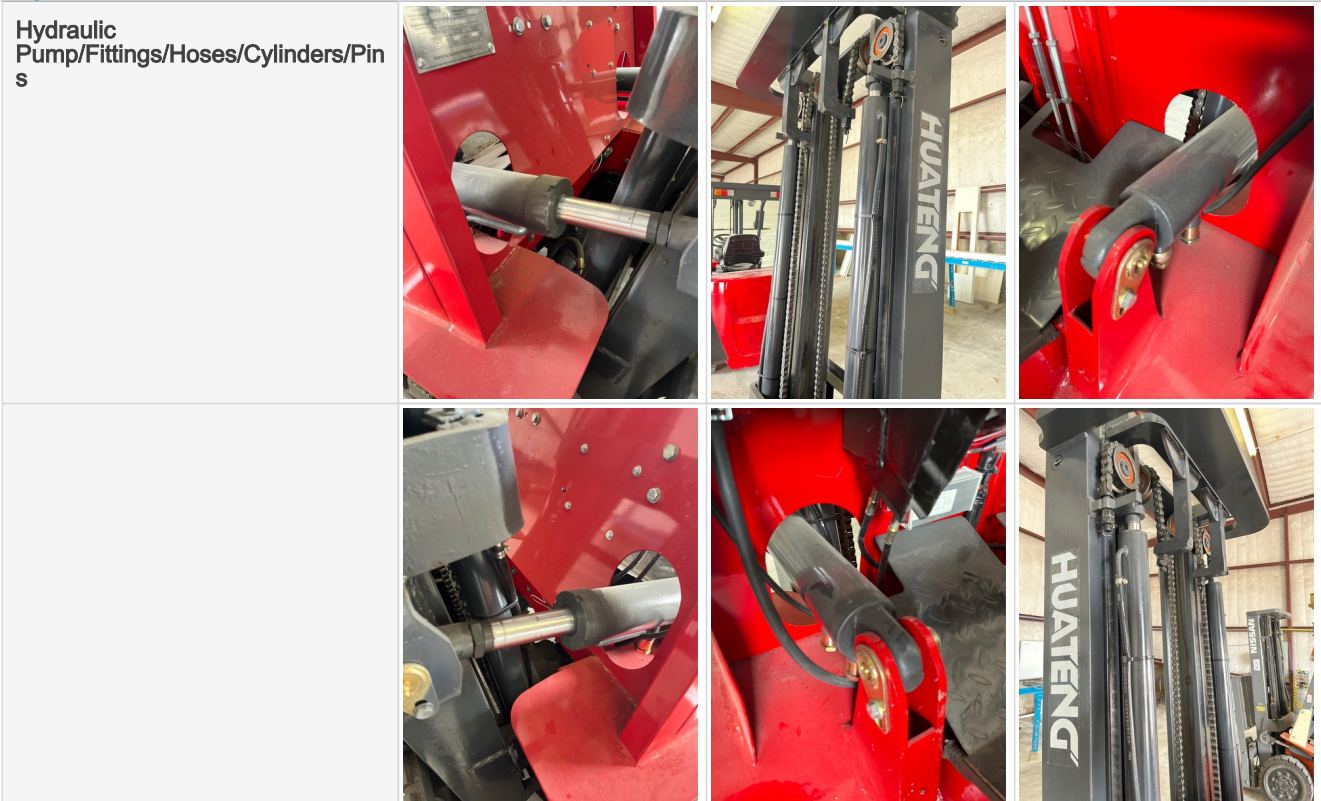
Seller Onboarded Machine



Drivetrain Components





Hydraulics

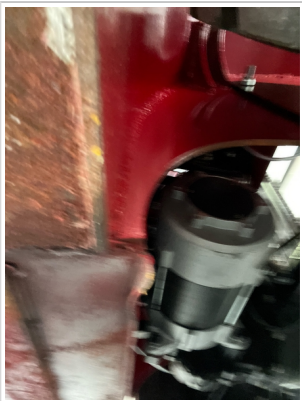


Seller Onboarded Machine

Chassis

| | | | |
|----------------|---|--|--|
| Chassis Photos |  |  | |
|----------------|---|--|--|

Underbody Inspection Points

| | | |
|------------------|--|--|
| Underbody Photos |  | |
|------------------|--|--|

Functionality Assessment

| | |
|---------------------------------|-----------------------------------|
| Is this machine operable? | Yes |
| Video - Operational or 360 | Click to Download |
| What's great about this machine | Almost new. |
| What needs work | NA |