

Seller Onboarded Machine

General Info

B&B Stock Number	A7694606
Category	Excavator
Year	2005
Make	Caterpillar
Model	308C
Serial Number / VIN	Cat0308cacrw01565
Serial Number Plate / VIN Sticker	
Hour Meter Reading	1315

Seller Onboarded Machine

Hour Meter Photo



Dimensions

Overall Length (ft and inches)	19.18ft
Overall Width (ft and inches)	7.58ft
Overall Height (ft and inches)	8.58ft
Operational Weight (lbs)	17730

Off Highway Equipment

Travel System	Track Undercarriage
Fuel Type	Diesel
Control Station Type	Enclosed Cab (EROPS)
Operator Controls	Pilot Controls

Seller Onboarded Machine

A/C	Yes
Heat	Yes
Radio	Yes
Reverse Camera	No






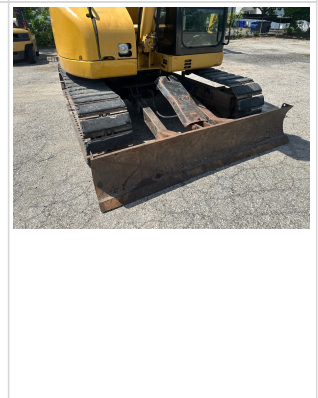
Excavator

Blade	Yes
Bucket	Yes
Bucket Size (yd3 / inches)	36inch
Auxiliary Hydraulics	No
Thumb	No
Extended Stick Option	N/A
Quick Coupler	No

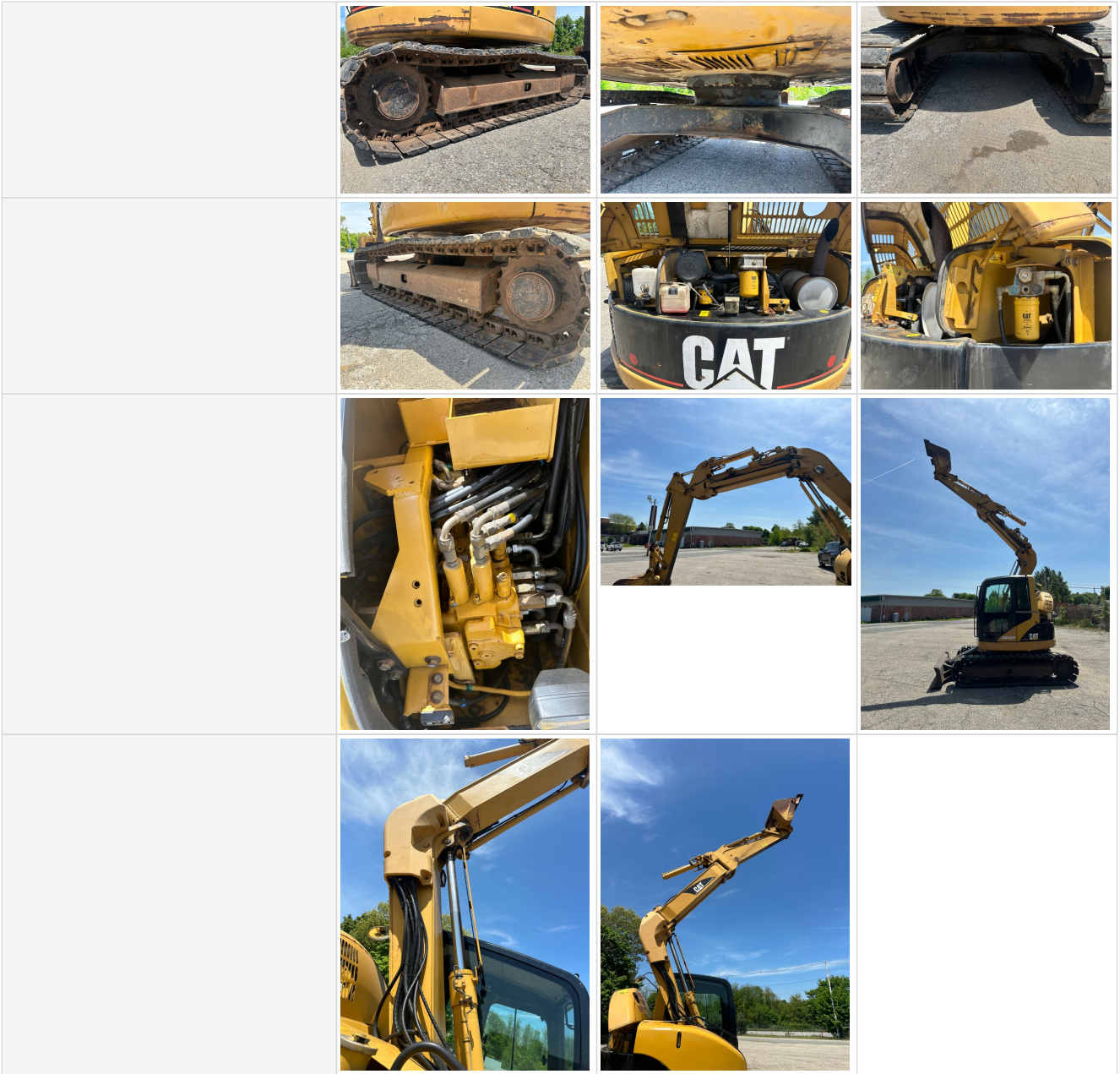
Other Features & Attachments

OMM (Operator & Maintenance Manual)	No
Other Features & Attachments	Hydraulic knuckle boom

360 Walkaround Photos

<p>Exterior Walkaround Photos</p>			
			

Seller Onboarded Machine

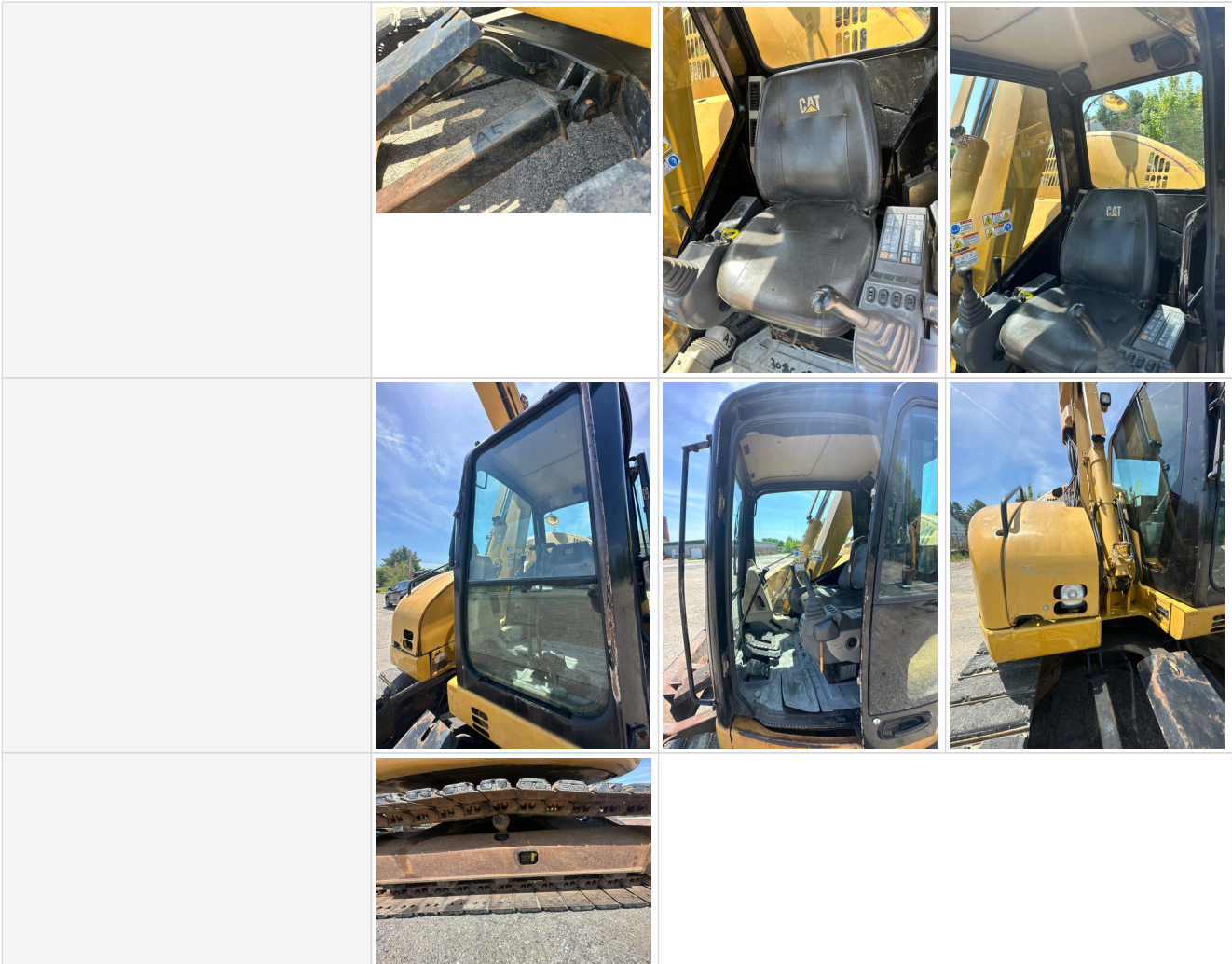


General Appearance

Close-Up Exterior Photos








Seller Onboarded Machine











Control Station



Seller Onboarded Machine

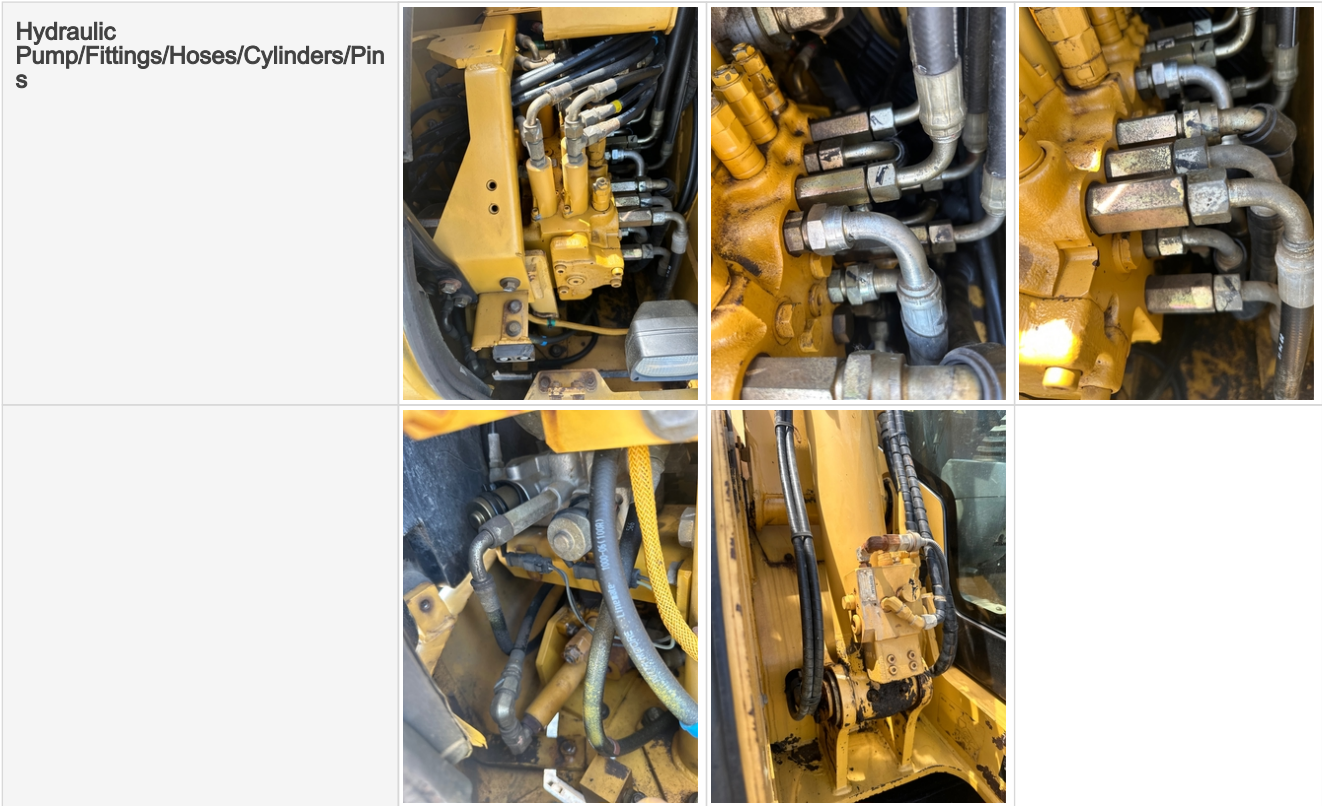
Engine Compartment			
			
Engine Type (Make, Model, Cylinders, Hp)	Mitsubishi, 4M40-EA, 4 cylinders, 54hp		
Engine Overall Comments	Very clean engine.		

Drivetrain Components

Drivetrain Photos			
			
			

Hydraulics

Seller Onboarded Machine



Chassis



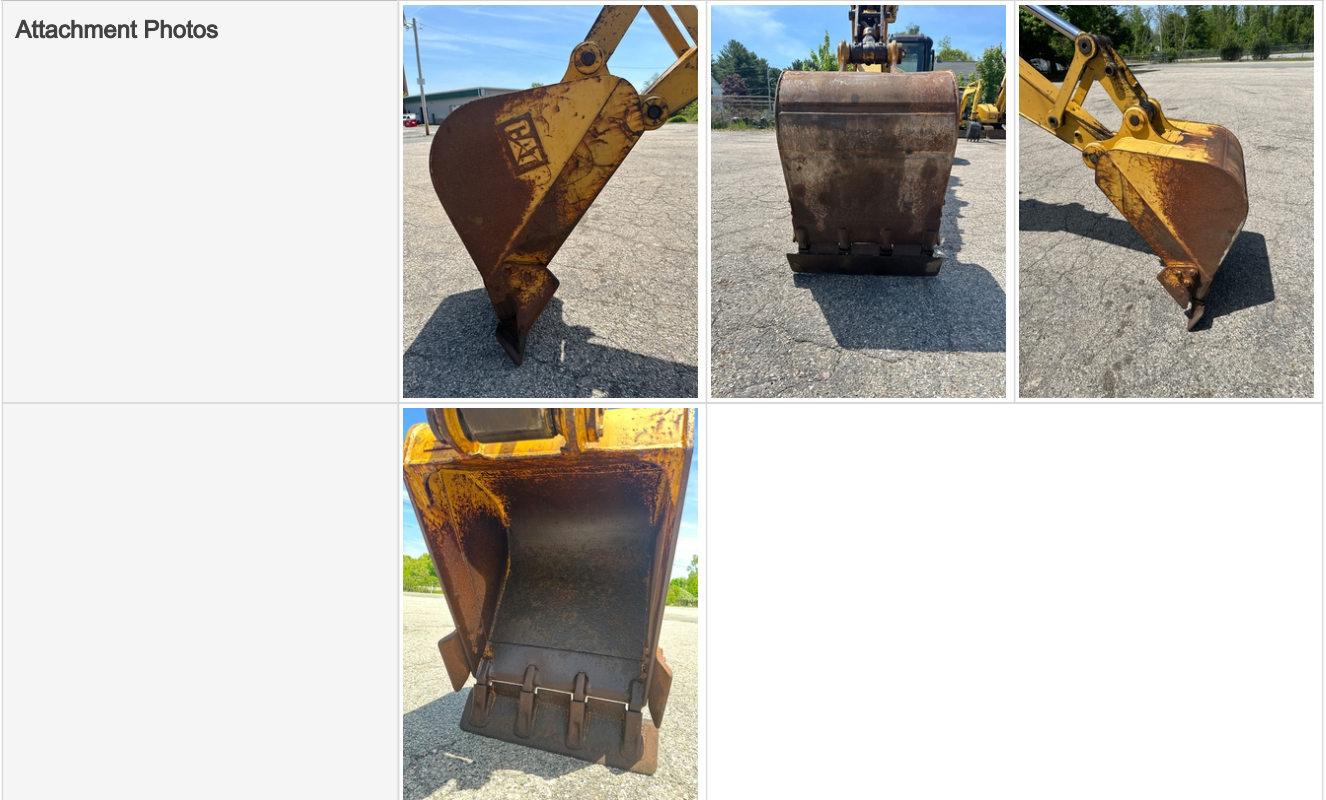
Underbody Inspection Points



Seller Onboarded Machine



Attachments



Functionality Assessment

Is this machine operable?	Yes
Video - Operational or 360	Click to Download
What's great about this machine	Sideshifts arm left right, clean engine, padded track.
What needs work	None