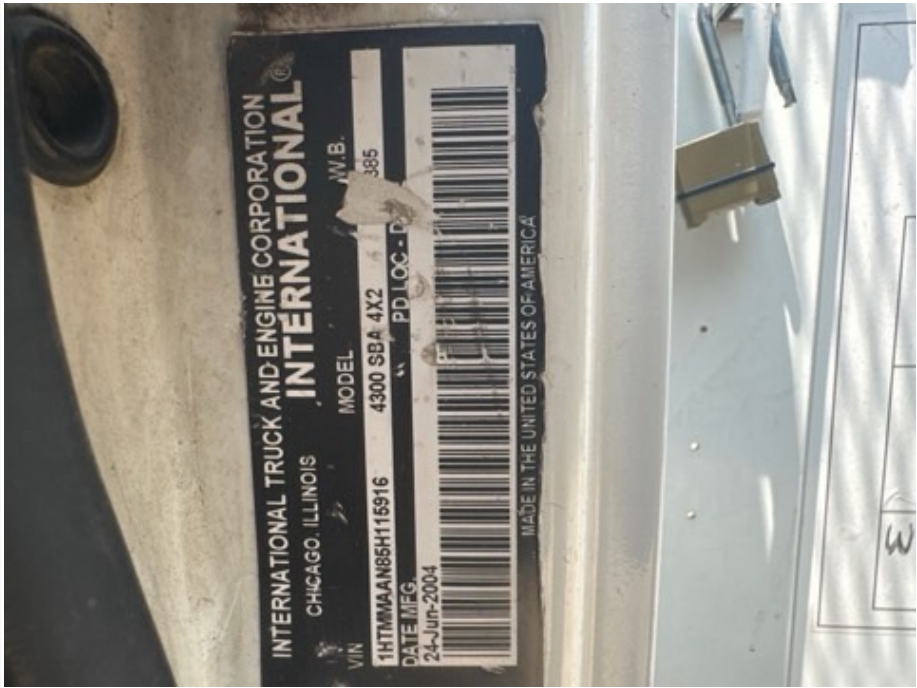


## Seller Onboarded Machine

### General Info

B&B Stock Number	A7444798
Category	Bucket Truck
Year	2005
Make	International
Model	4300
Serial Number / VIN	1HTMMAAN85H115916
Serial Number Plate / VIN Sticker	
	05-25-2024 03:48 PM
Hour Meter Reading	2961

## Seller Onboarded Machine

Hour Meter Photo	
	05-25-2024 03:49 PM

### Dimensions

Overall Length (ft and inches)	12
Overall Width (ft and inches)	95
Overall Height (ft and inches)	11'5"
Wheel Base (ft and inches) - ON HIGHWAY MACHINES	152"
Operational Weight (lbs)	33000

### All On-Highway Trucks

Is this vehicle titled?	Yes
-------------------------	-----

### Seller Onboarded Machine

Cab Type	Regular / Day Cab
Drive Type	4X2
Transmission	Automatic
Fuel Type	Diesel
PTO	Yes
Engine Brake	Yes
Air Brakes	Yes
A/C	Yes
Heat	Yes
Radio	Yes
Rear Camera	No
Cruise Control	Yes
Over Drive	No

### Bucket Truck

Lift Make/Model	Altec L42A
-----------------	------------



### Seller Onboarded Machine

Lift SN Plate

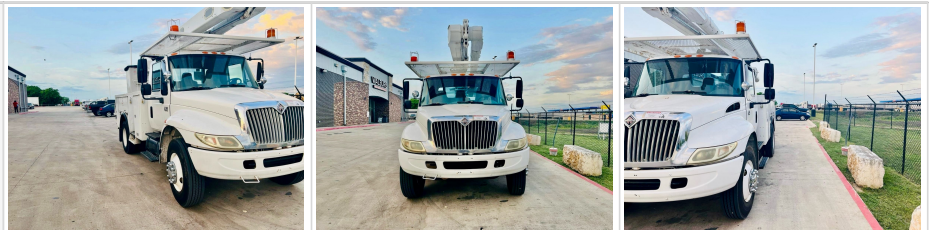


Work Basket	Yes
-------------	-----

Outriggers / Stabilizers	Yes
--------------------------	-----

### 360 Walkaround Photos

Exterior Walkaround Photos

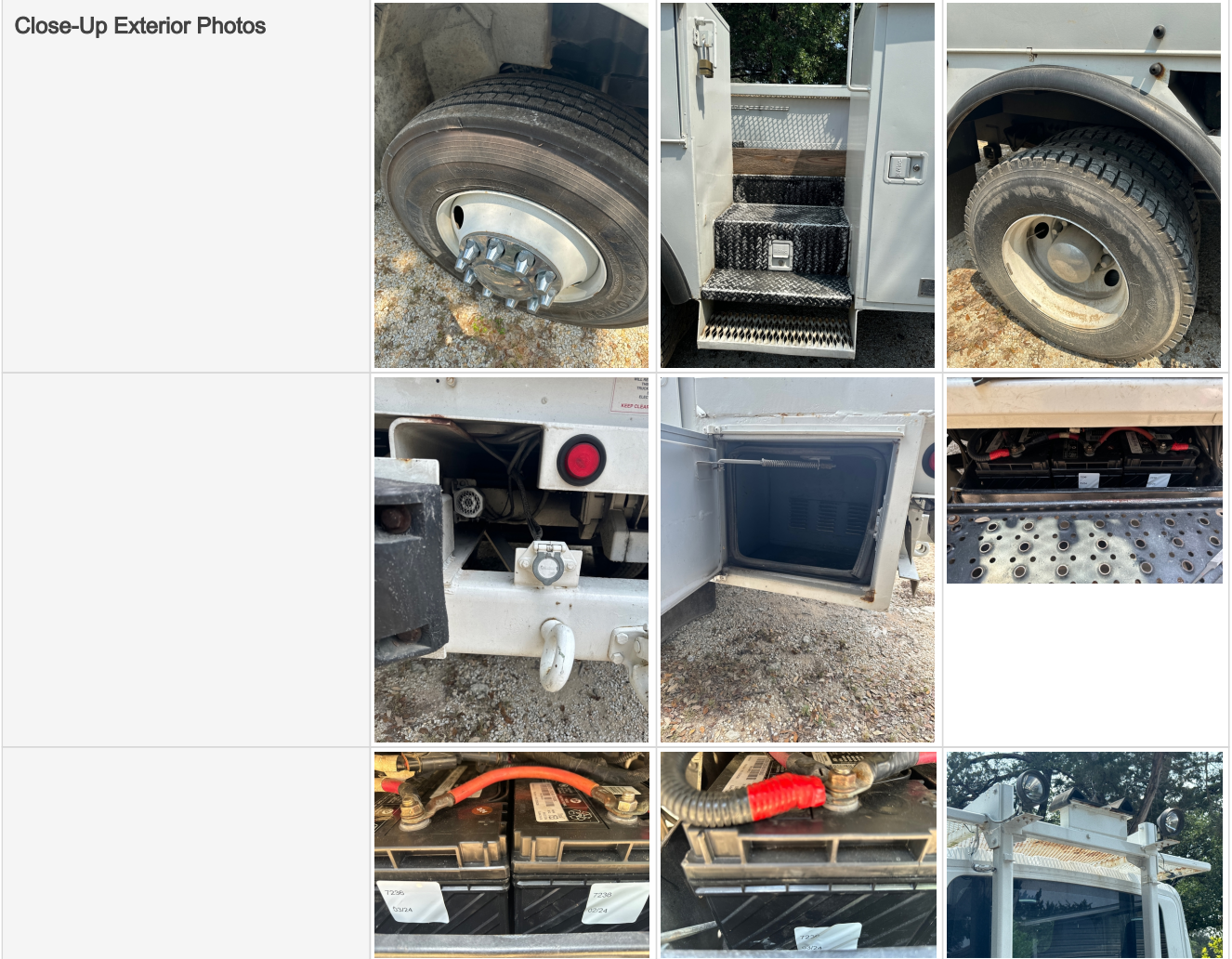




**Seller Onboarded Machine**

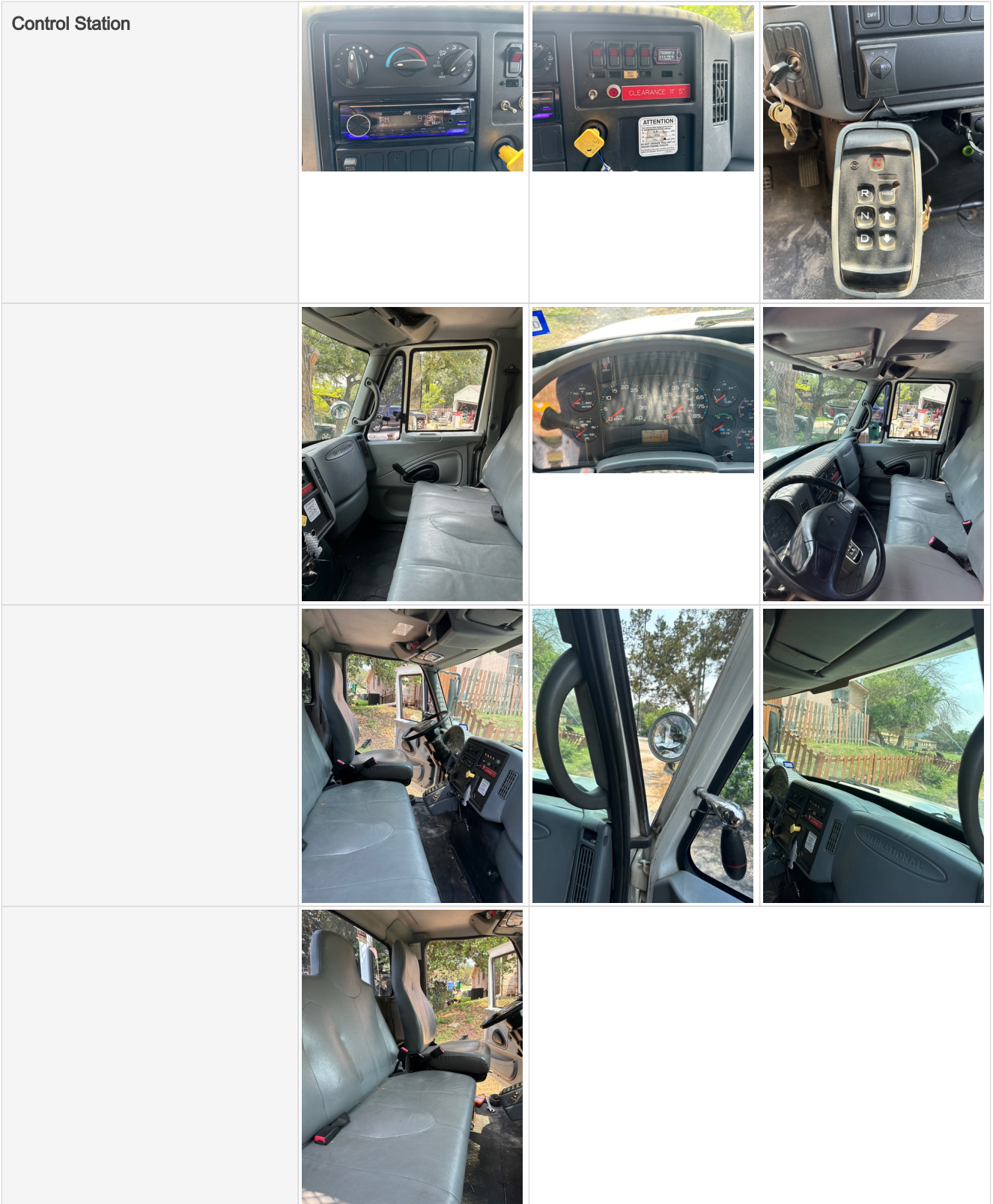


**General Appearance**



**Control Station**

**Seller Onboarded Machine**








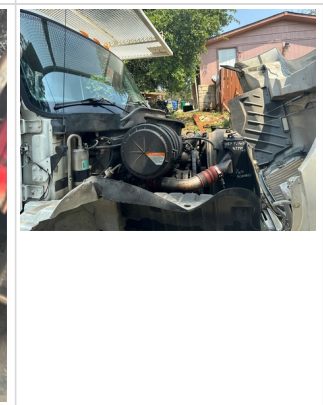


**Engine**








**Seller Onboarded Machine**

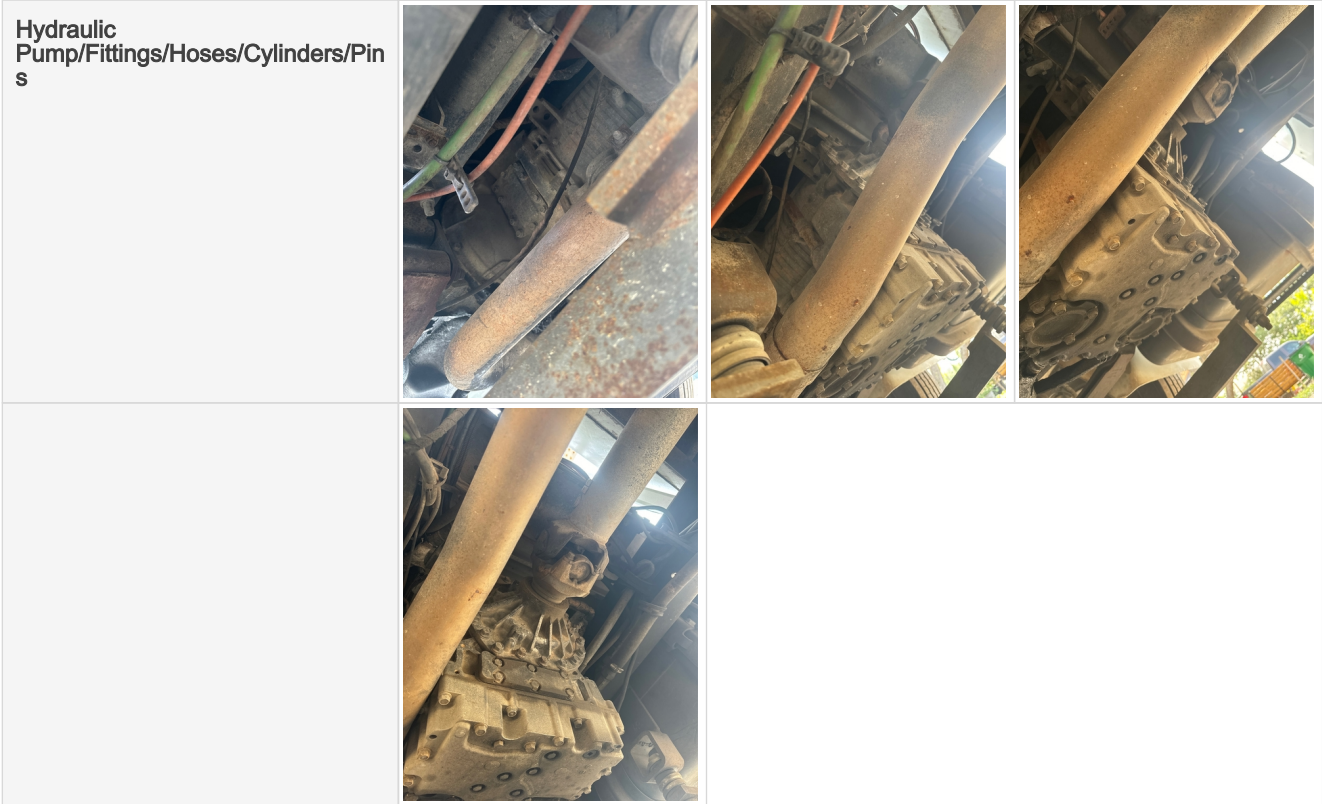
			
			
			
<p>Engine Type (Make, Model, Cylinders, Hp)</p>	<p>INTERNATIONAL , D255,</p>		

**Drivetrain Components**

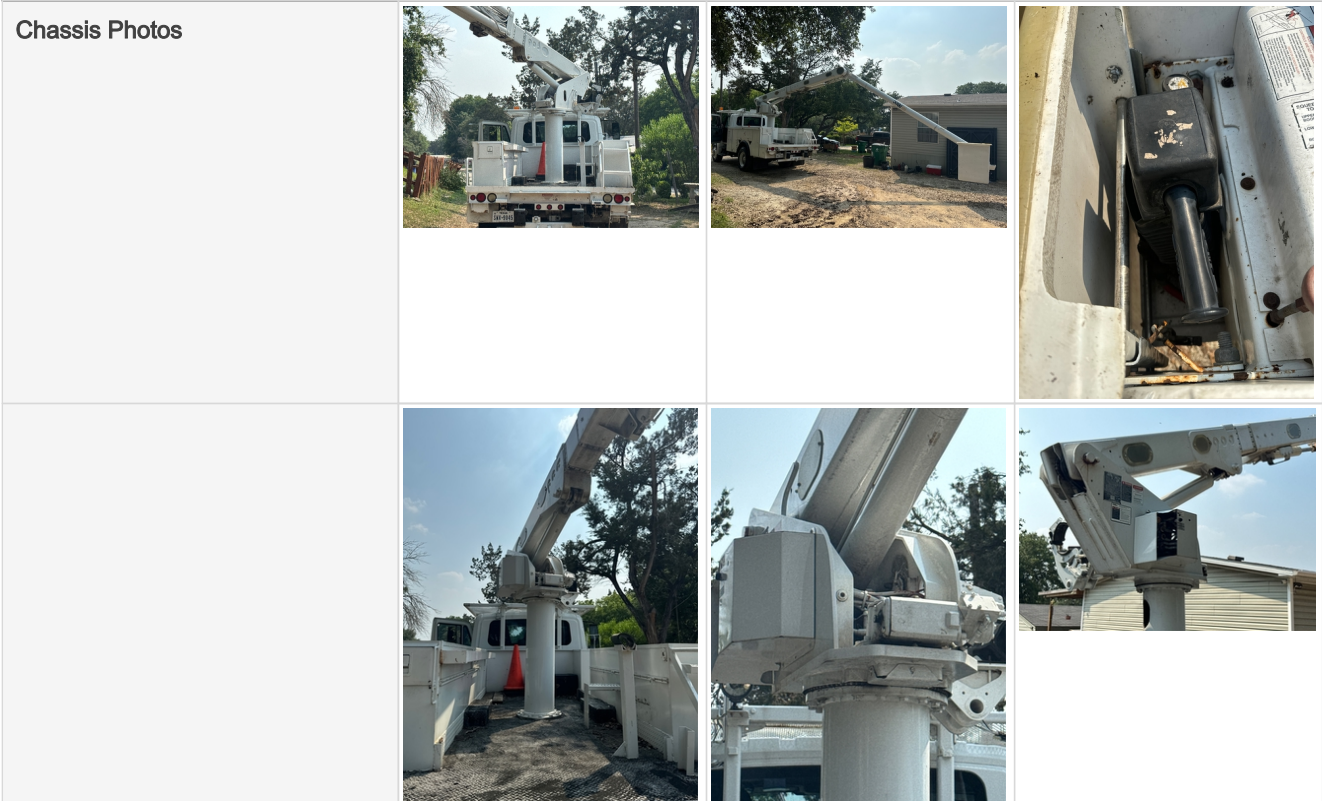
<p>Drivetrain Photos</p>	
--------------------------	---

**Hydraulics**

**Seller Onboarded Machine**



**Chassis**

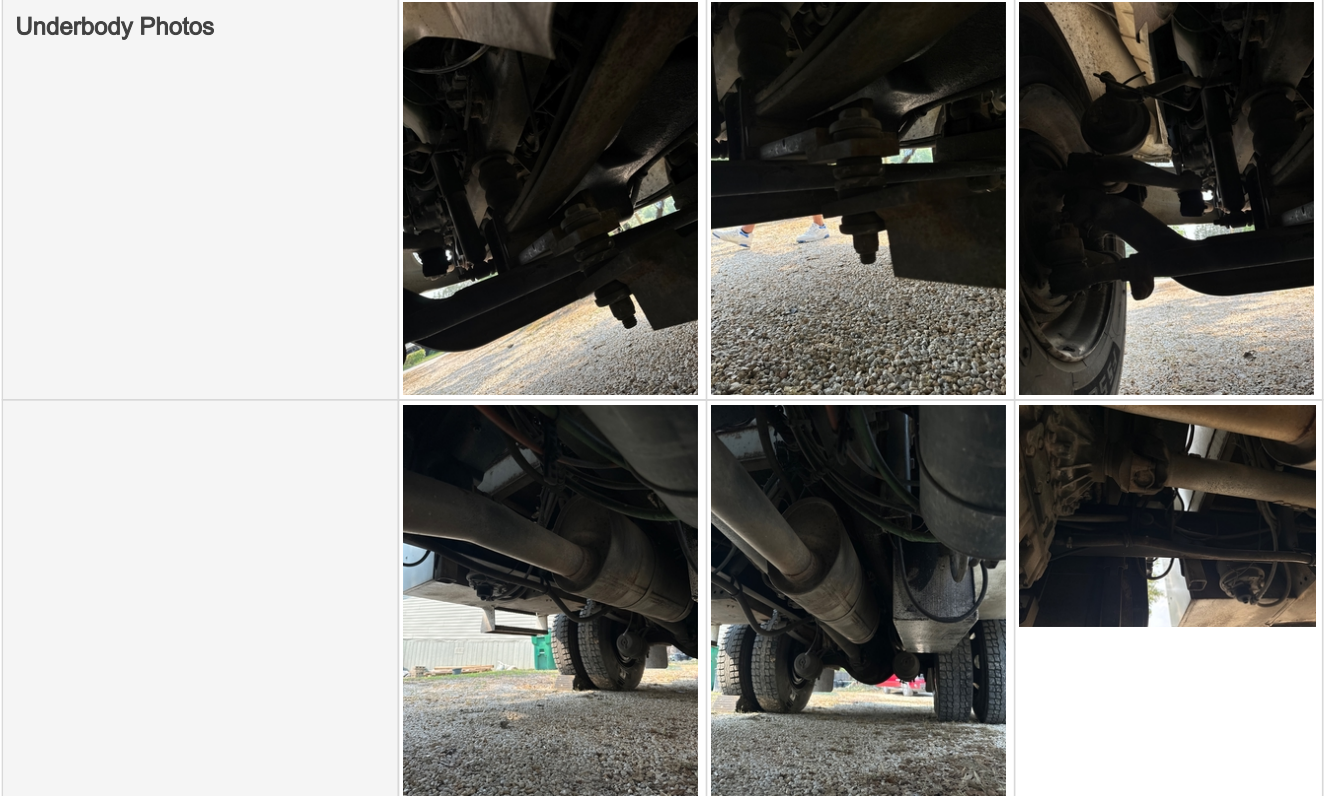




**Seller Onboarded Machine**



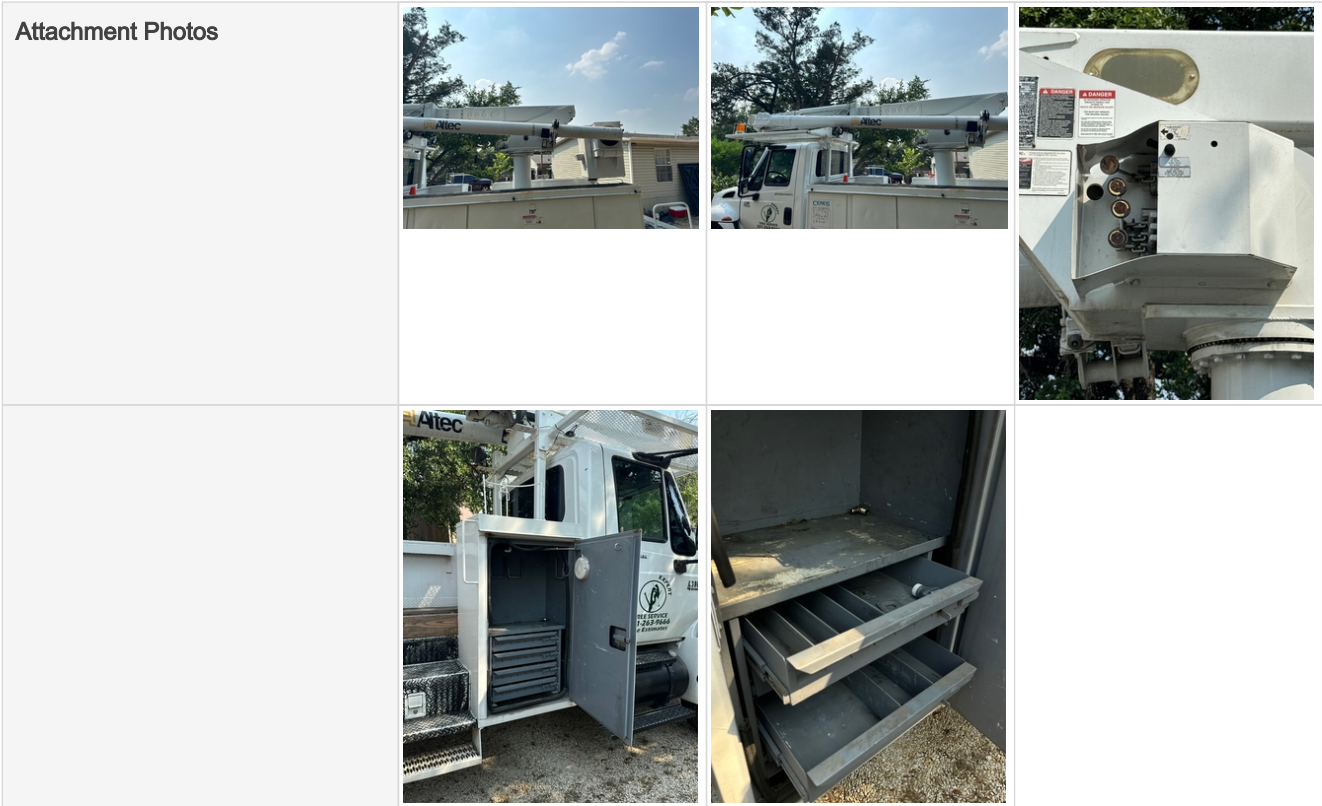
**Underbody Inspection Points**



**Attachments**



### Seller Onboarded Machine



### Functionality Assessment

Is this machine operable?	Yes
Video - Operational or 360	<a href="#">Click to Download</a>
What's great about this machine	Excellent condition ready for work. New tires. Working A/C. Working audio system. Zero issues.
What needs work	No services required.