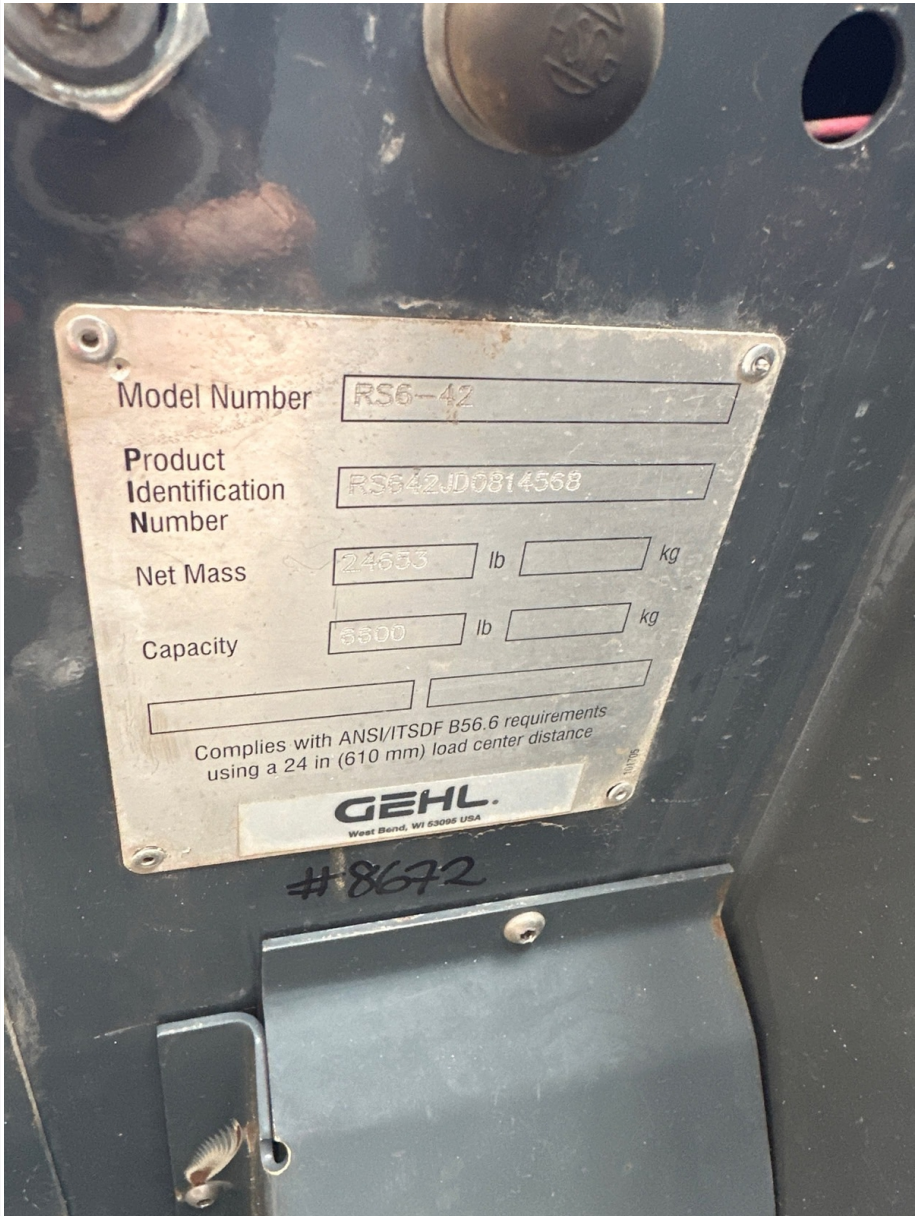


## Seller Onboarded Machine v2.0

### General Info

B&B Stock Number	A9529491
Category	Forklift
Year	2012
Make	Gehl
Model	RS6-42
Serial Number / VIN	RS642JD0814568
Serial Number Plate / VIN Sticker	
	06-19-2024 04:30 PM
Hour Meter or Odometer Reading	3158

## Seller Onboarded Machine v2.0

Hour Meter or Odometer Photo



06-19-2024 04:32 PM

### Dimensions

Overall Length (ft and inches)	20ft
Overall Width (ft and inches)	7.5 ft
Overall Height (ft and inches)	7.5ft

### Off Highway Equipment

Travel System	Wheels & Tires
Drive Type	4X4
Fuel Type	Diesel
Control Station Type	Open Cab (OROPS)



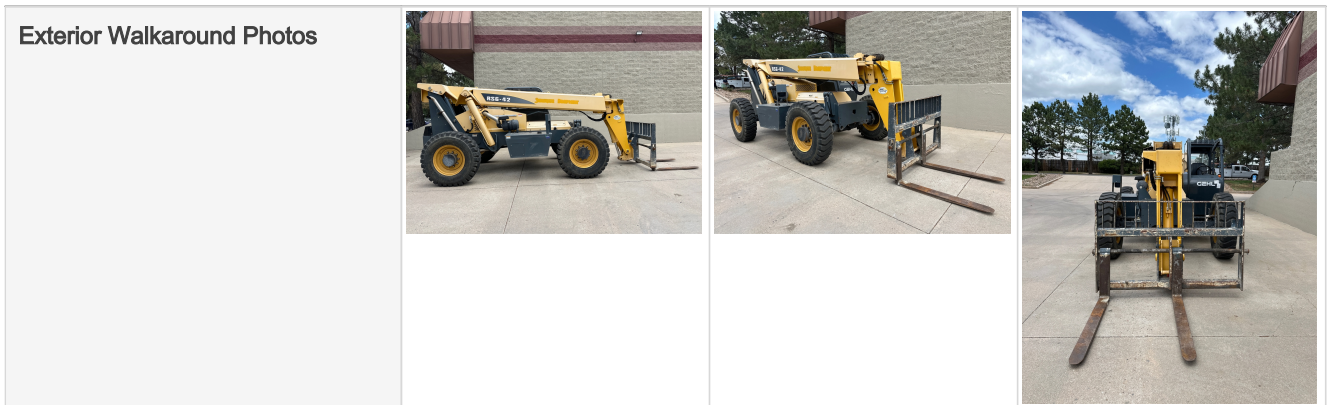
### Seller Onboarded Machine v2.0

A/C	N/A
Heat	N/A
Radio	N/A
Reverse Camera	N/A
All of the above are fully functional	N/A

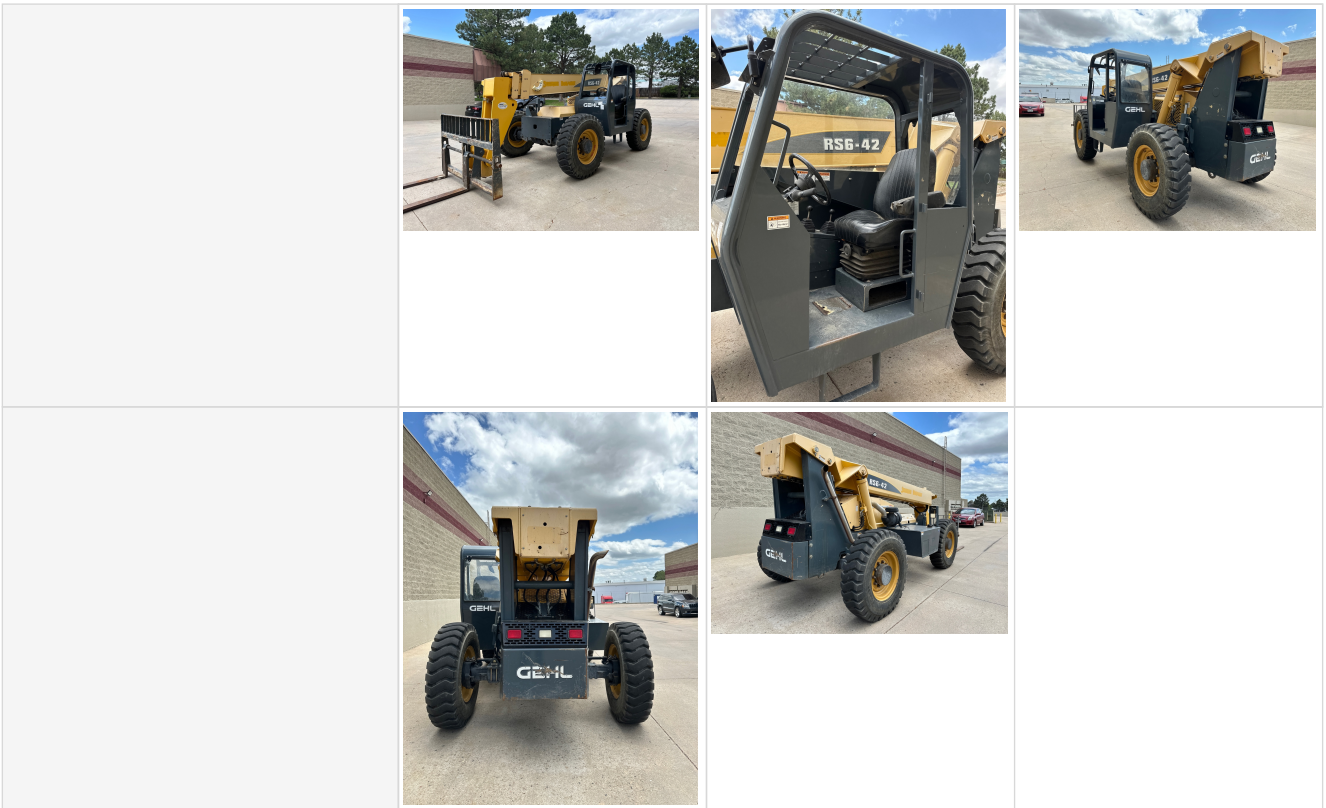
### Forklift

Forks	Yes
Length x Width (inches)	48" x 4.75"
Max Lift Height	42ft
Max Lift Capacity	6,600 lbs
Engine Type	Diesel
Wheel Type	Foam Filled
Fork Positioner	N/A
Side Shift	N/A
Mast Tilt	N/A
Frame Leveling	Yes
Tilt Carriage	N/A
Carriage Extend	N/A
Charger Included	N/A

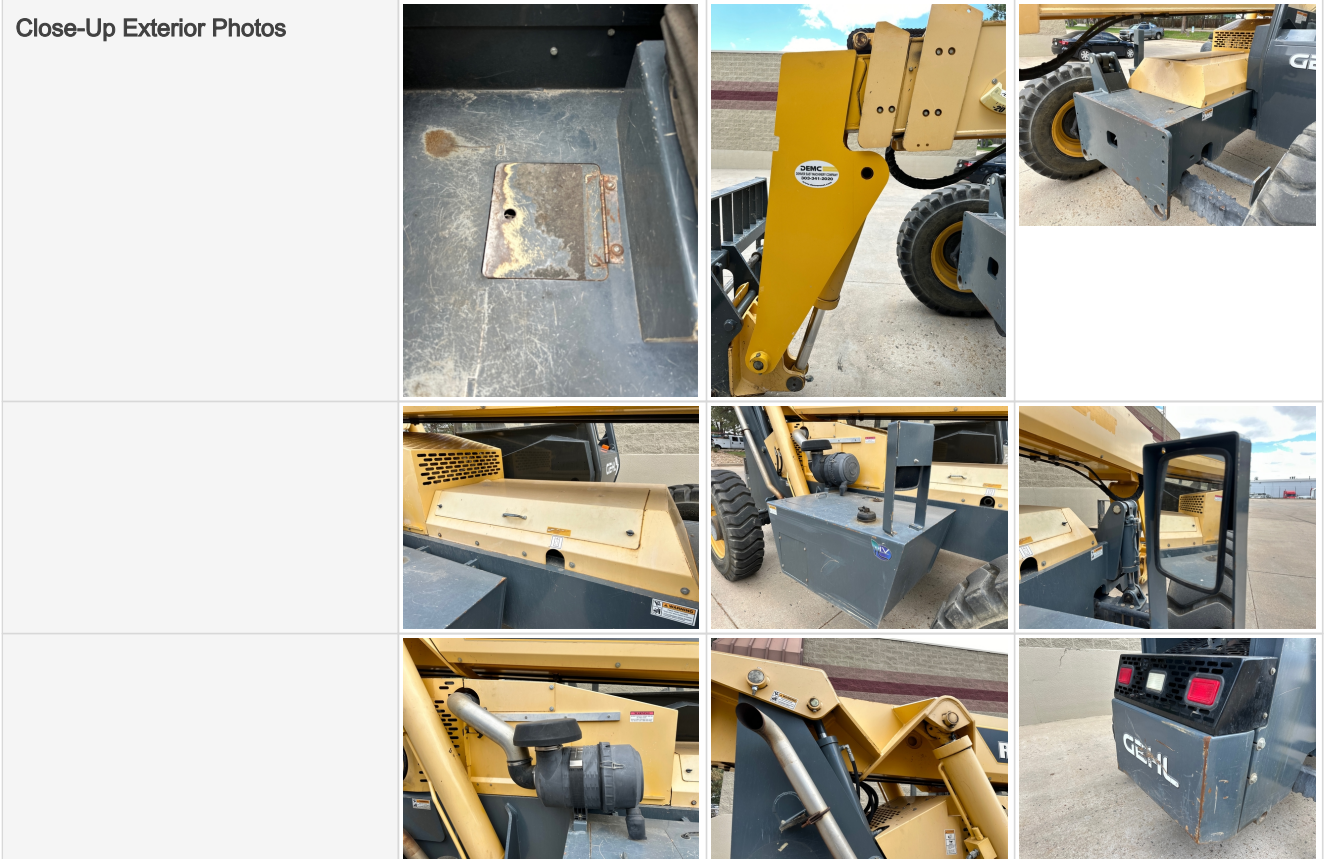
### 360 Walkaround Photos



**Seller Onboarded Machine v2.0**



**General Appearance**













**Seller Onboarded Machine v2.0**





			
<p>Exterior Comments</p>	<p>Exterior is in good overall condition</p>		

**Control Station**





<p>Control Station</p>			
			
			

**Engine**

## Seller Onboarded Machine v2.0

Engine Compartment	  	
		
Engine Type (Make, Model, Cylinders, Hp)	John Deere	
Engine Idle Video - Optional	<a href="#">Click to Download</a>	
Engine Overall Comments	Engine turns over easily, machine sounds as it should, no leaks or wet spots	





## Drivetrain Components

Drivetrain Photos	  		
			
Drivetrain Comments	Clean and dry		






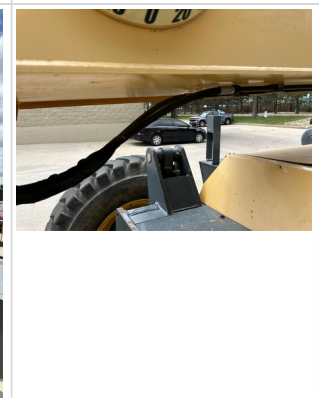
## Underbody Inspection Points



**Seller Onboarded Machine v2.0**

<p>Underbody Photos</p>			
			
<p>Underbody Comments</p>	<p>Foam filled tires have 80% life left</p>		

**Hydraulics**

<p>Hydraulic Pump/Fittings/Hoses/Cylinders/Pins</p>			
			

## Seller Onboarded Machine v2.0

		
<b>Hydraulic System Comments</b>	Hydraulics are clean, lines do not have dry rot	

## Chassis

<b>Chassis Photos</b>			
			
<b>Comments</b>	Machine frame rust free, no alignment issues		

## Attachments

<b>Attachment Photos</b>			
			
<b>Attachment Comments</b>	Machine comes with 48" forks		

## Functionality Assessment

<b>Is this machine fully operable?</b>	Yes
<b>Video - Operational or 360</b>	<a href="#">Click to Download</a>





## Seller Onboarded Machine v2.0

What's great about this machine	Machine operates as expected, no unusual noises, machine has been greased
What needs work	Machine is work ready