

## Boom & Bucket Machine Onboarding


### General Info

|                                   |   |
|-----------------------------------|---|
| B&B Stock Number                  | A8999088  |
| Category                          | Other   |
| Year                              | N/a   |
| Make                              | Generac   |
| Model                             | MLT3060M  |
| Fleet ID                          | 42001   |
| Serial Number / VIN               | 1600304   |
| Serial Number Plate / VIN Sticker |  |
|                                   | 09-09-2024 12:43 PM   |
| Hour Meter or Odometer Reading    | 5618  |

## Boom & Bucket Machine Onboarding

|                              |  |
|------------------------------|--|
| Hour Meter or Odometer Photo |  <p>09-09-2024 12:45 PM</p> |
|------------------------------|--|

## Dimensions

|   |  |
|---|--|
| Overall Length (ft and inches)                  | 14ft   |
| Overall Width (ft and inches)                   | 4ft  |
| Overall Height (ft and inches)                  | 5'9"   |
| Operational Weight (lbs)                        | 1857   |
| Specs or dimension pages from manual (optional) |  |

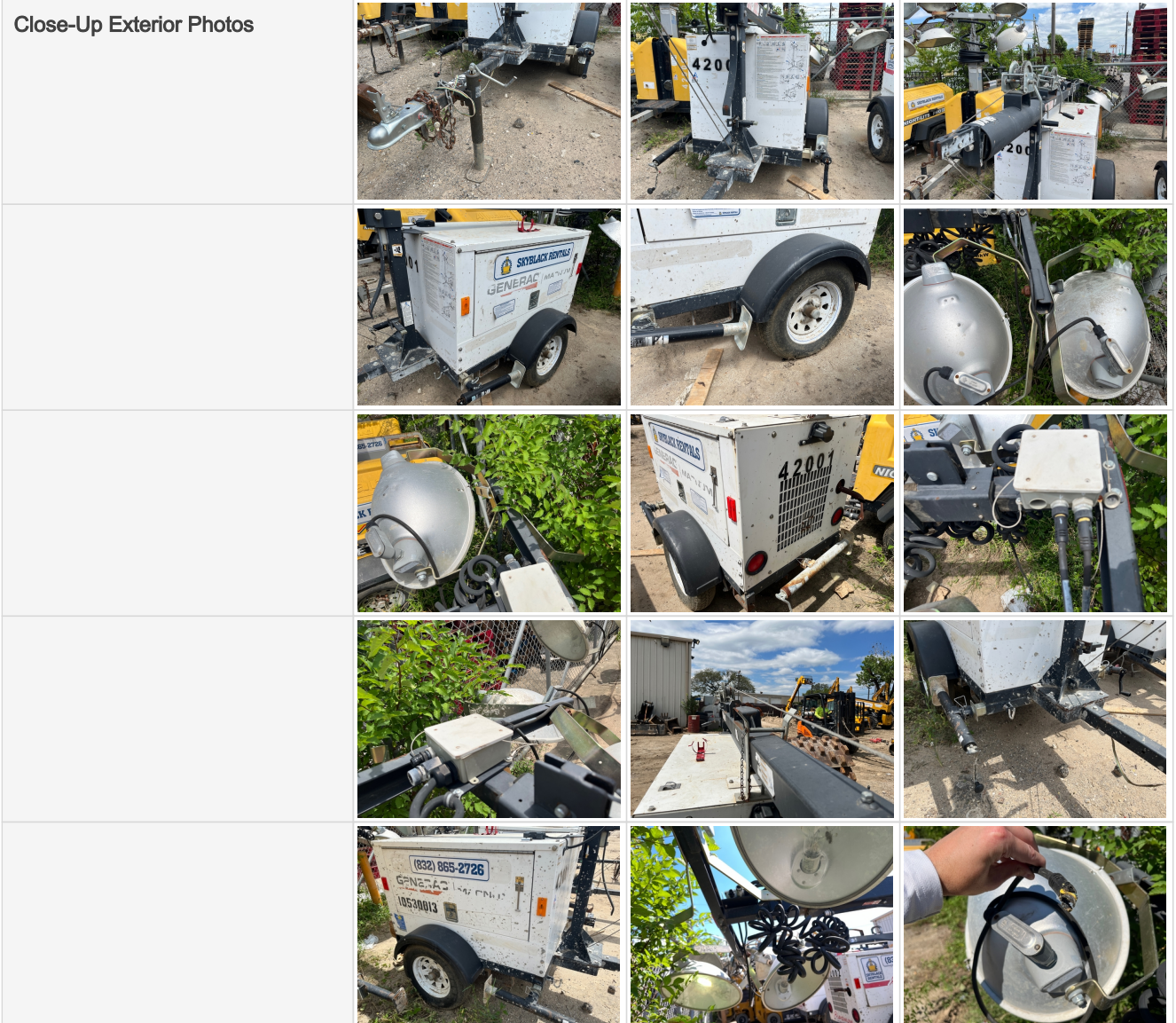
## 360 Walkaround Photos

|                            |  |
|----------------------------|--|
| Exterior Walkaround Photos |  |
|----------------------------|--|

## Boom & Bucket Machine Onboarding



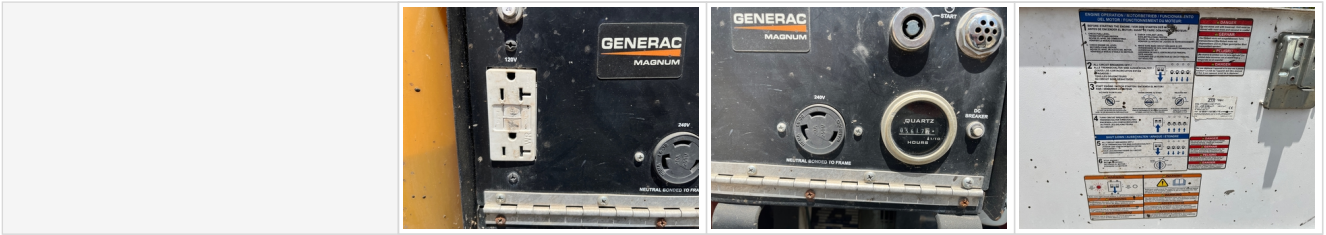
## General Appearance



## Control Station



## Boom & Bucket Machine Onboarding



## Engine




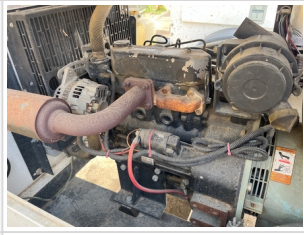

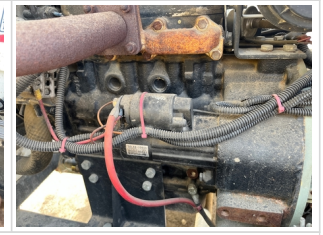

Engine Data Plate



Engine Compartment



## Boom & Bucket Machine Onboarding

|                                     |  |  |   |
|-------------------------------------|--|--|---|
|                                     |   |  |  |
|                                     |   |  |  |
|                                     |  |  |   |
| <p>Engine Idle Video - Optional</p> | <p><a href="#">Click to Download</a></p>   |  |   |




## Drivetrain Components

|  |   |  |  |
|--|---|--|--|
| <p>Drivetrain and Underbody Photos</p> |  |  |  |
|--|---|--|--|

## Hydraulics

|   |  |
|---|--|
| <p>Hydraulic Pump/Fittings/Hoses/Cylinders/Pins</p> |  |
|---|--|

## Chassis

|                       |   |  |   |
|-----------------------|---|--|---|
| <p>Chassis Photos</p> |  |  |  |
|-----------------------|---|--|---|

## Boom & Bucket Machine Onboarding



### Attachments

|                   |   |  |
|-------------------|---|--|
| Attachment Photos |  |  |
|-------------------|---|--|

### Functionality Assessment

|                                 |  |
|---------------------------------|--|
| Is this machine fully operable? | Yes  |
| Video - Operational or 360      | <a href="#">Click to Download</a>  |
| What's great about this machine | Once started engine seems to run well.   |
| What needs work                 | Missing one light, removed for repair/replacement. 2/3 remaining lights didn't turn on. Engine belt may need to be examined. |