


## Boom & Bucket Machine Onboarding

### General Info

B&B Stock Number	A5056612
Category	Generator
Year	N/a
Make	Allmand
Model	Night-lite Pro ii
Fleet ID	42006
Serial Number / VIN	Plate missing - see listing info
Serial Number Plate / VIN Sticker	
	09-09-2024 03:47 PM
Hour Meter or Odometer Reading	3797

## Boom & Bucket Machine Onboarding

Hour Meter or Odometer Photo	
	09-09-2024 03:48 PM

### Dimensions

Overall Length (ft and inches)	10ft
Overall Width (ft and inches)	4'1"
Overall Height (ft and inches)	9ft approx
Operational Weight (lbs)	N/a

### Generator

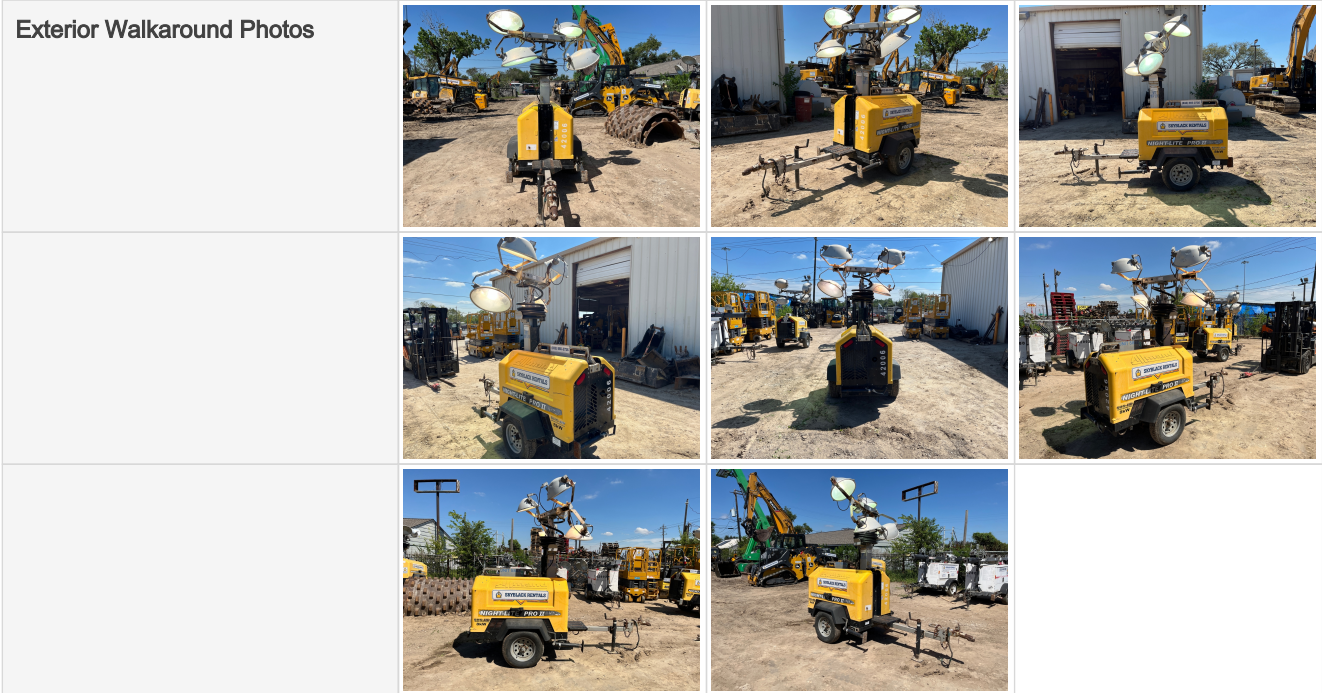
Towable?	Yes
Is this trailer titled?	No
Trailer Brakes	None
Trailer GVWR (Gross Vehicle Weight Rating)	Unavailable
kW Output / Power Rating (kW)	Unavailable
Electrical Outlets	Yes
Number of Outlets	2
Hitch Type	Rear Receiver

### Other Features & Attachments

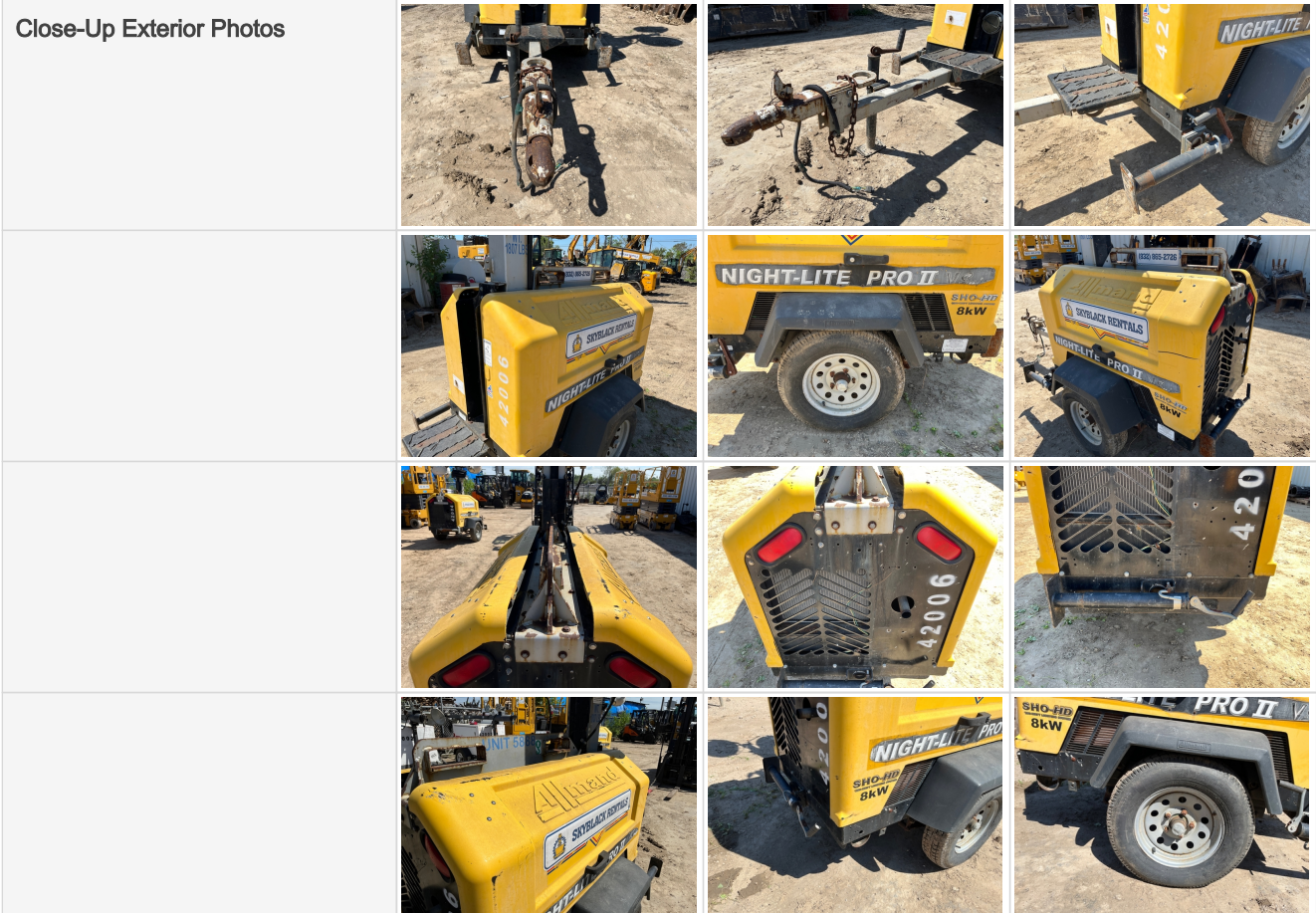
OMM (Operator & Maintenance Manual)	No
-------------------------------------	----

### 360 Walkaround Photos

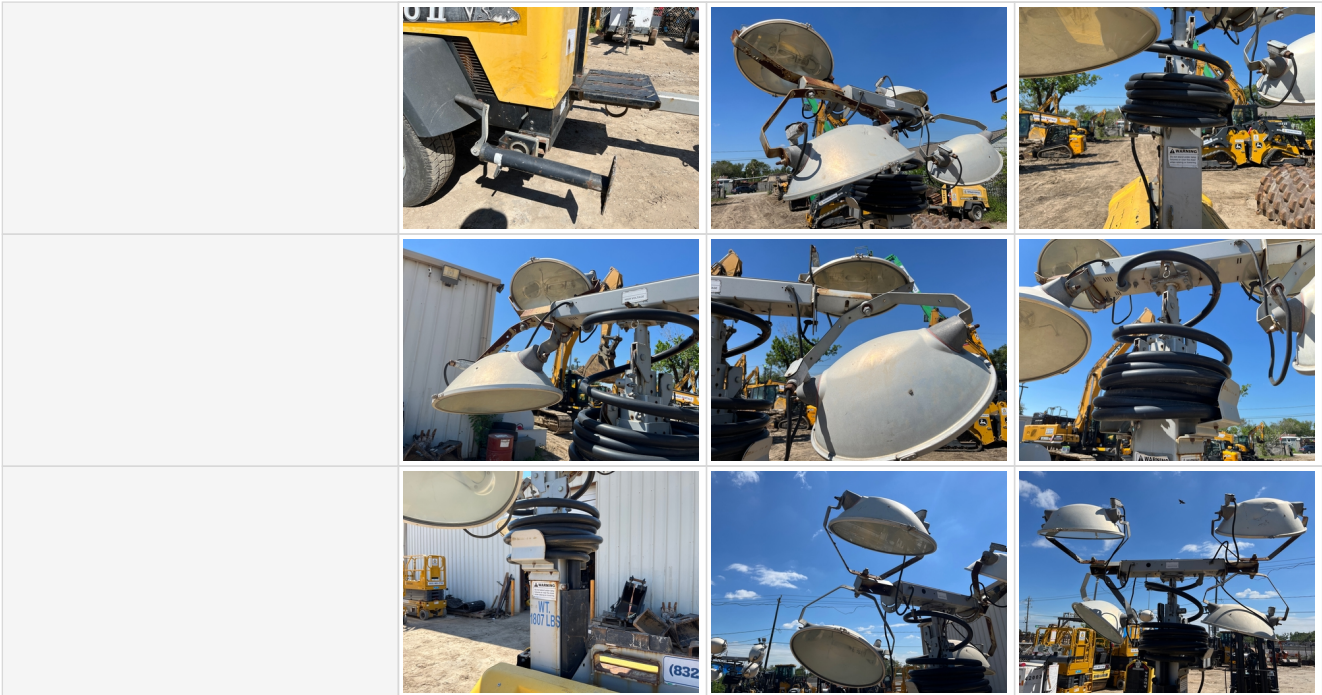
## Boom & Bucket Machine Onboarding



## General Appearance



### Boom & Bucket Machine Onboarding








### Control Station



### Engine

## Boom & Bucket Machine Onboarding

<p>Engine Data Plate</p>			
<p>Engine Compartment</p>			
			
			
			
<p>Engine Type (Make, Model, Cylinders, Hp)</p>	<p>Kubota d1105-bg-et01</p>		
<p>Engine Idle Video - Optional</p>	<p><a href="#">Click to Download</a></p>		

## Boom & Bucket Machine Onboarding

### Chassis



### Functionality Assessment

Is this machine fully operable?	Yes
Video - Operational or 360	<a href="#">Click to Download</a>
What's great about this machine	Engines and lights fire right up. Works as expected.