



Boom & Bucket Machine Onboarding


General Info

B&B Stock Number	A4867773
Category	Generator
Year	N/a
Make	Allmand
Model	Night-lite Pro ii
Fleet ID	42004
Serial Number / VIN	0972PRO2v12
Serial Number Plate / VIN Sticker	
	09-09-2024 03:21 PM
Hour Meter or Odometer Reading	3653

Boom & Bucket Machine Onboarding

Hour Meter or Odometer Photo	
09-09-2024 03:22 PM	

Dimensions

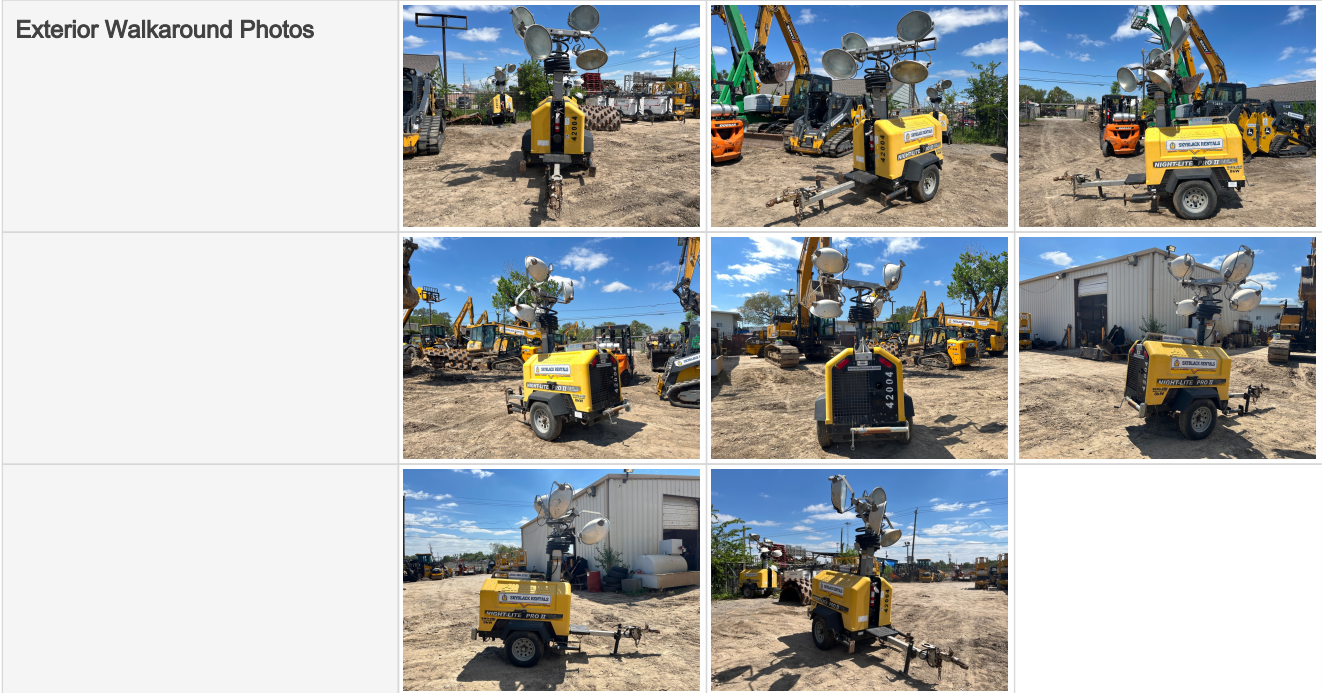
Overall Length (ft and inches)	10ft
Overall Width (ft and inches)	4'1"
Overall Height (ft and inches)	9ft approx
Specs or dimension pages from manual (optional)	

Generator

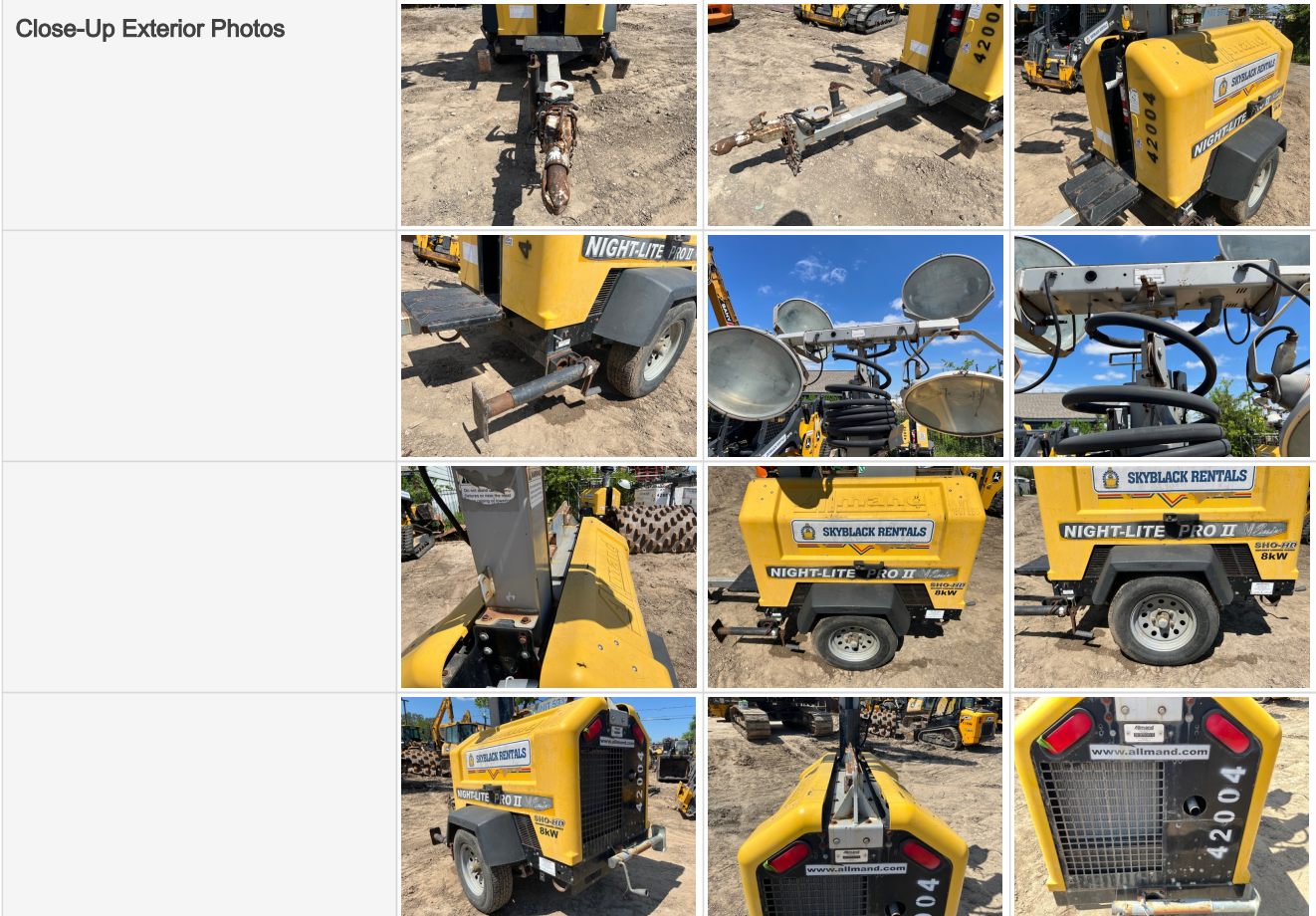
Towable?	Yes
Is this trailer titled?	No
Trailer Brakes	None
Trailer GVWR (Gross Vehicle Weight Rating)	N/a
Electrical Outlets	Yes
Number of Outlets	2

360 Walkaround Photos

Boom & Bucket Machine Onboarding



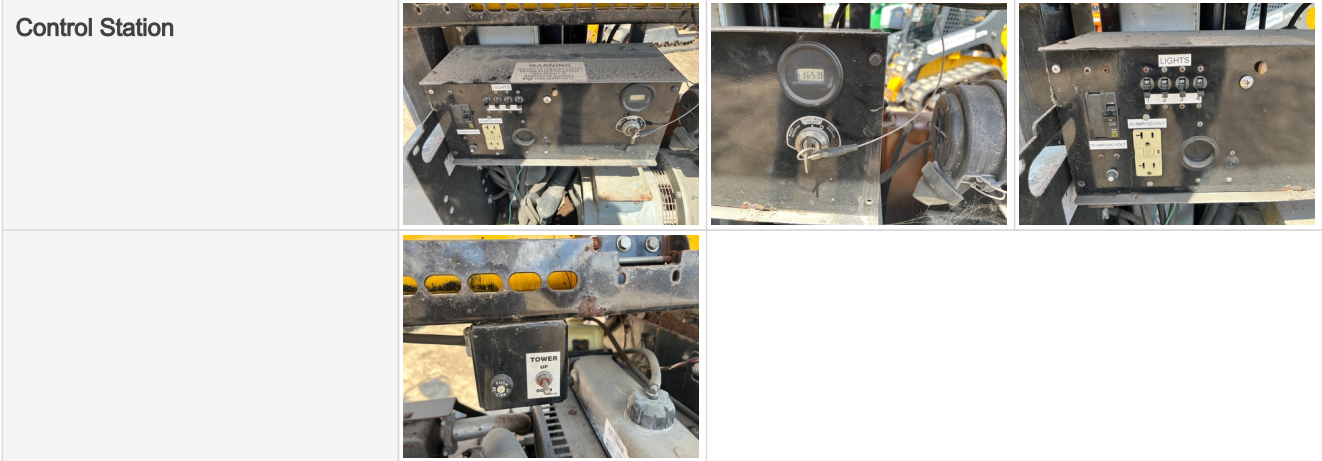
General Appearance



Boom & Bucket Machine Onboarding




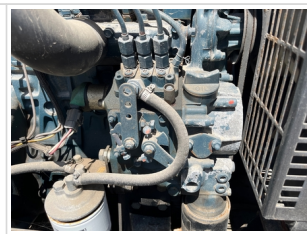






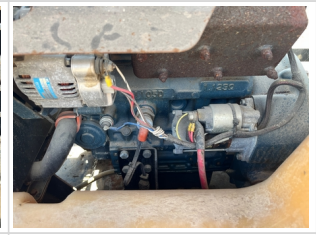



Control Station



Engine



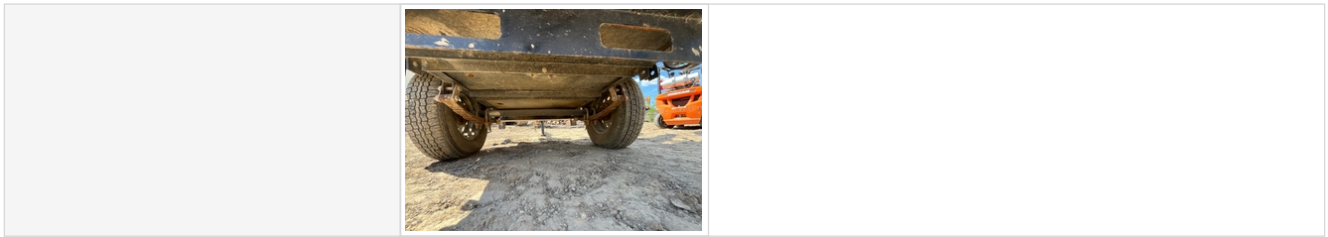
Boom & Bucket Machine Onboarding

Engine Compartment			
			
			
			
Engine Type (Make, Model, Cylinders, Hp)	Kubota d1105-bg-et01		
Engine Idle Video - Optional	Click to Download		

Chassis

Chassis Photos			
			

Boom & Bucket Machine Onboarding



Functionality Assessment

Is this machine fully operable?	Yes
Video - Operational or 360	Click to Download
What's great about this machine	Works as expected. Engine turns over with no issues.