


Boom & Bucket Machine Onboarding

General Info

B&B Stock Number	A0451744
Category	Forklift
Year	2006
Make	Doosan Daewo
Model	G35S-2
Fleet ID	31002
Serial Number / VIN	106120409
Serial Number Plate / VIN Sticker	
	09-10-2024 04:09 PM
Hour Meter or Odometer Reading	4469

Boom & Bucket Machine Onboarding

Hour Meter or Odometer Photo	
09-10-2024 08:30 AM	

Dimensions

Overall Length (ft and inches)	10ft 4in without forks	
Overall Width (ft and inches)	4ft 9in	
Overall Height (ft and inches)	7ft 7in	
Operational Weight (lbs)	Unsure	
Specs or dimension pages from manual (optional)		

Off Highway Equipment

Travel System	Wheels & Tires
Drive Type	4X2
Fuel Type	LP (Liquid Propane)
Control Station Type	Open Cab (OROPS)
Operator Controls	Other









Boom & Bucket Machine Onboarding

Seat Type	Fixed
A/C	No
Heat	No
Radio	No
Reverse Camera	No
All of the above are fully functional	N/A

Forklift

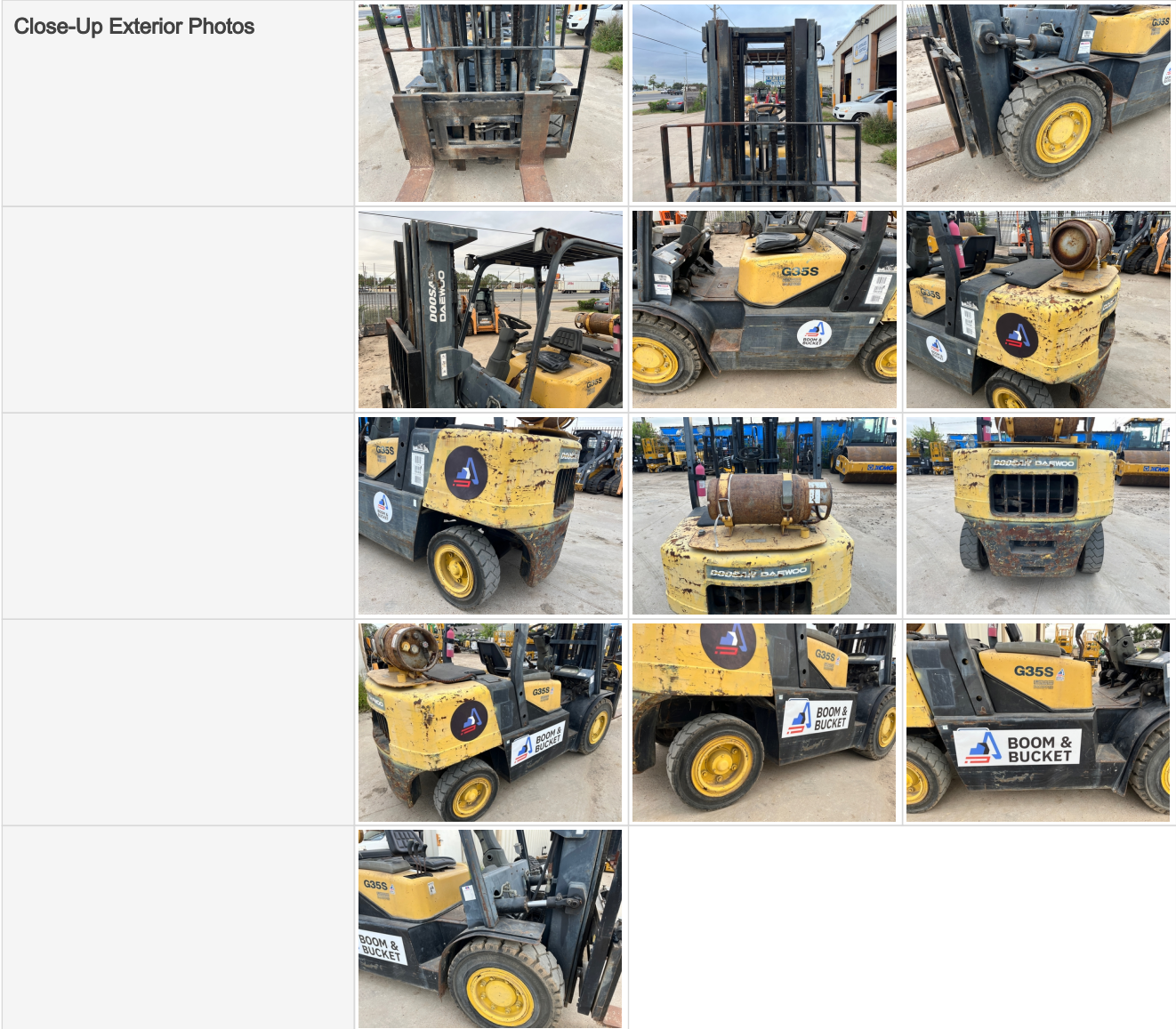
Forks	Yes
Length x Width (inches)	3'10" L, 7" W
Engine Type	Propane
Wheel Type	Solid
Fork Positioner	No
Side Shift	Yes
Mast Tilt	Yes
Frame Leveling	No
Tilt Carriage	No
Carriage Extend	No

360 Walkaround Photos

Exterior Walkaround Photos			
			
			

General Appearance

Boom & Bucket Machine Onboarding



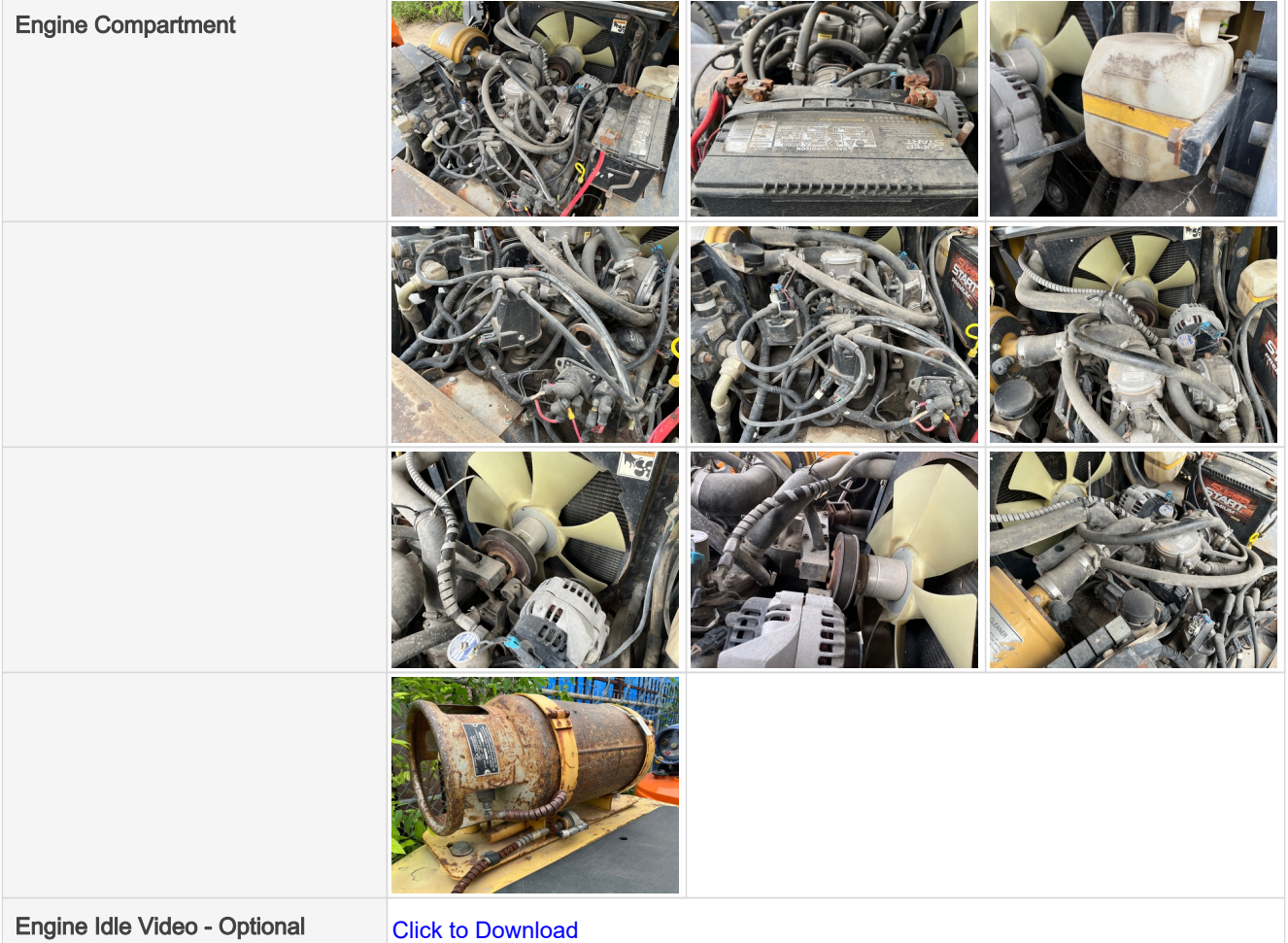
Control Station



Boom & Bucket Machine Onboarding

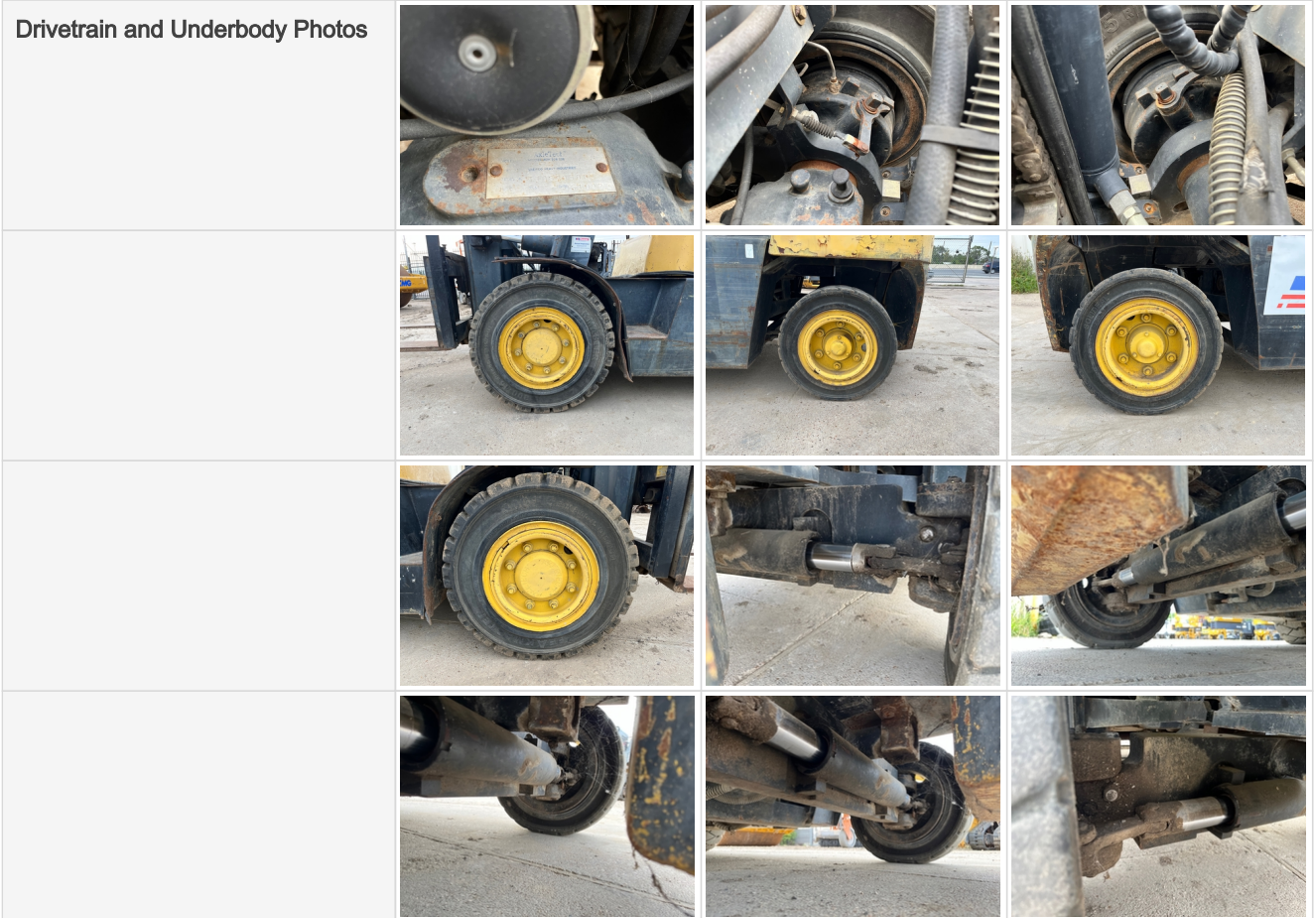


Engine

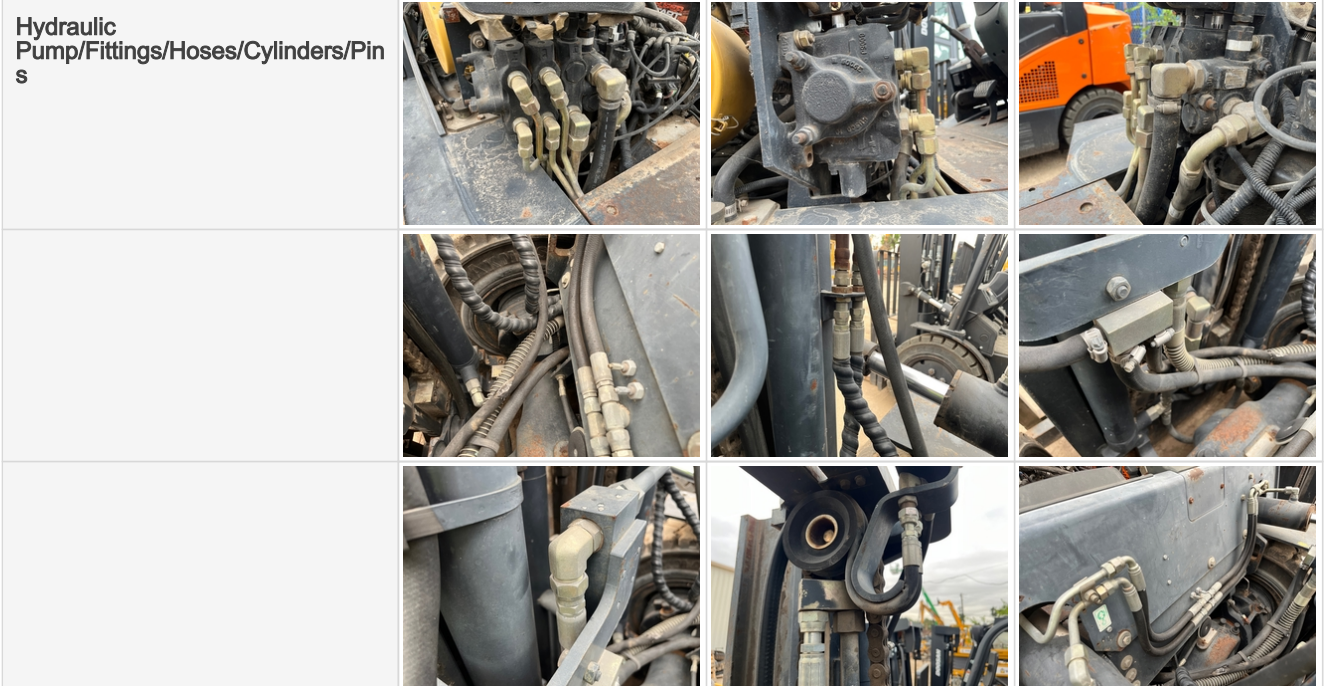


Drivetrain Components

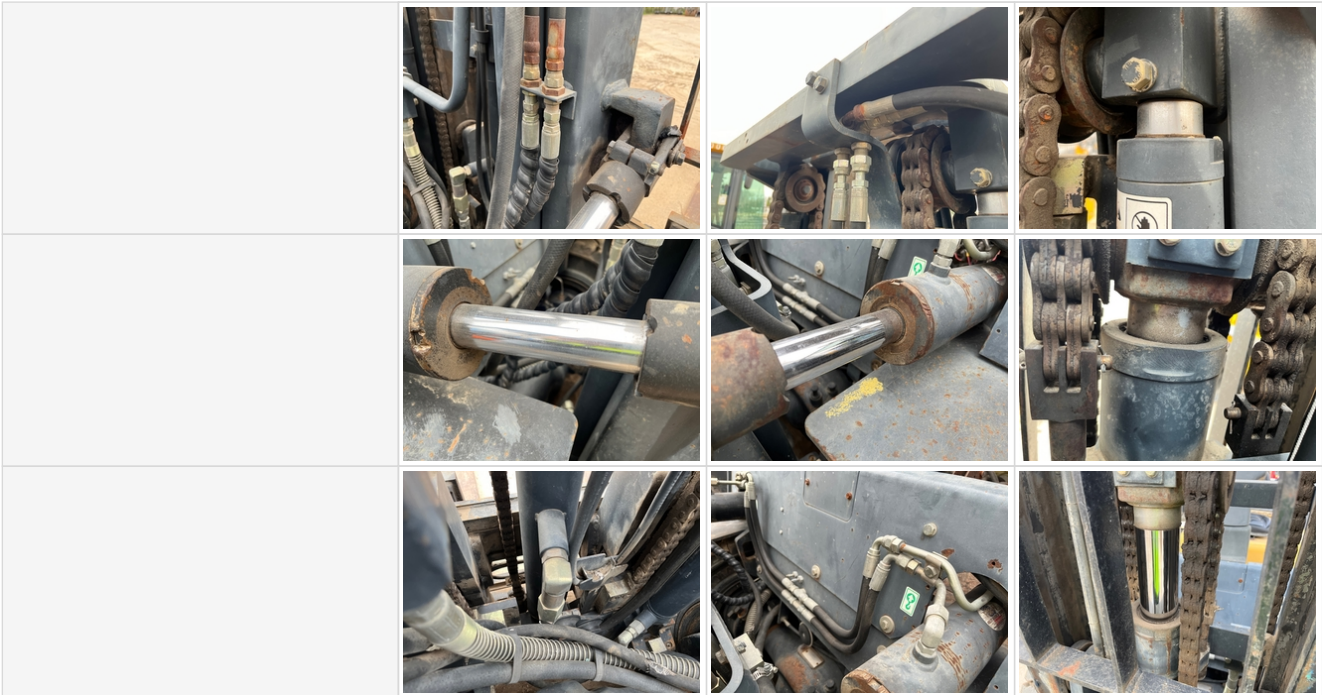
Boom & Bucket Machine Onboarding



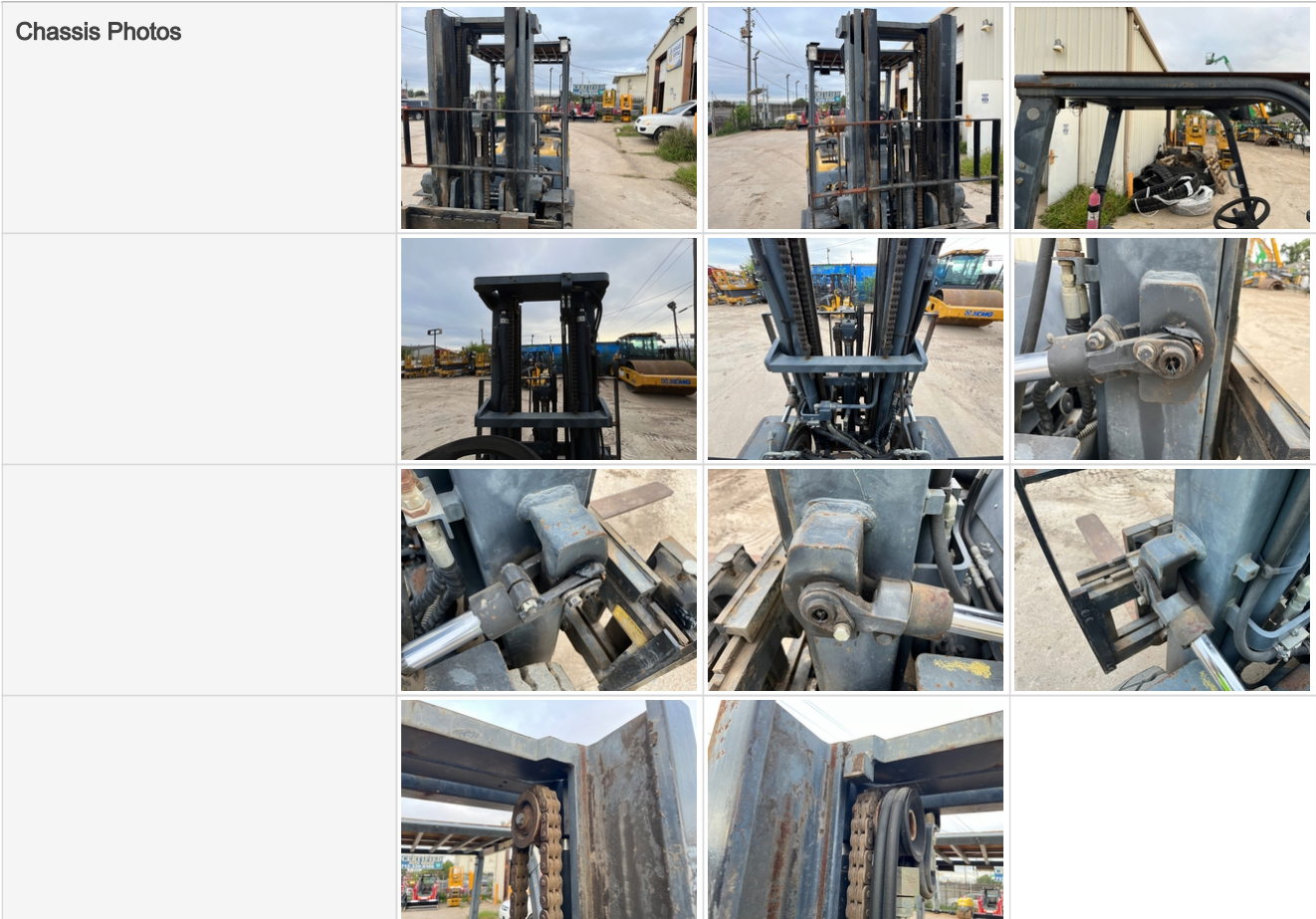
Hydraulics



Boom & Bucket Machine Onboarding



Chassis



Attachments

Boom & Bucket Machine Onboarding

Attachment Photos			
			

Functionality Assessment

Is this machine fully operable?	Yes
Video - Operational or 360	Click to Download
What's great about this machine	Operates as expected, tires are all in good shape. Seat has no tears or fading.