
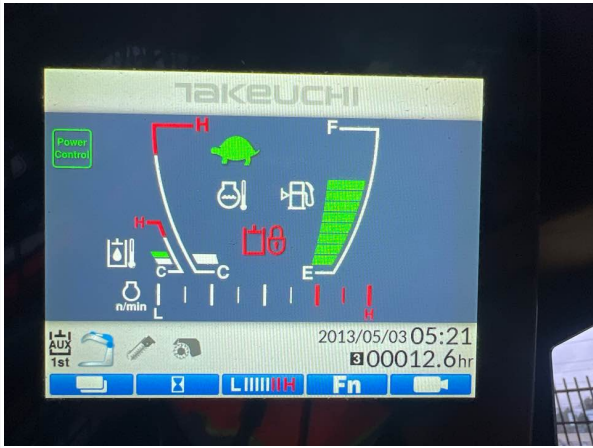


Inspection Report (Skid Steer/Track Loader)

General Info

B&B Stock Number	A0707256
Year	2023
Make	Takeuchi
Model	TL6R
Serial Number	406005112
Serial Plate Photo	
Hour Meter Reading	12.6
Hour Meter Photo	
Previous Application (e.g., earth moving, mining, demolition, etc)	Construction

Features and Configuration

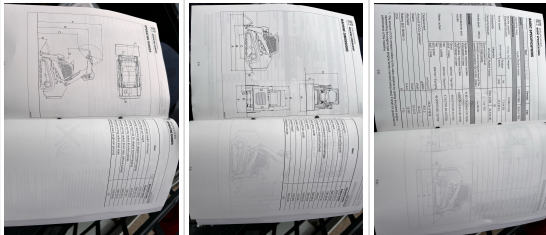
Travel System	Track Undercarriage
Bucket	Yes
Bucket Specs	67"
Additional Attachment(s)?	No
Auxiliary Hydraulics	Yes
High Flow	Yes
Heat	No

Inspection Report (Skid Steer/Track Loader)

A/C	No
Radio	No
Backup Camera	Yes
OMM (Operator & Maintenance Manual)	Yes
Telematics	No

OMM Specifications

OMM Specifications

Detail Specifications	Take photos of the detailed spec pages included in the operator's manual
OMM Spec Photos	

Exterior 360 Walkaround

360 Walkaround & Operating Video

Walkaround Photos & Operating Video

Exterior Walkaround Photos	
	
Additional Video	Click to Download

General Appearance Inspection Points

General Appearance

General Appearance Photos

Close-up Exterior Photos	
	

Inspection Report (Skid Steer/Track Loader)




General Appearance Inspection Points

Inspection Rating Criteria	Rating	Explanation
	5	Light or minimal wear for its age
	4	Expected wear and tear for its age, operates as expected
	3	Above average wear and tear for its age, still operates as expected
	2	Heavy wear, is operable but needs attention
	1	Requires repair(s) to function as expected
Body Panels	5 - Very Light or Minimal Wear	
Doors / Canopy Latches	0	
Steps / Ladders	5 - Very Light or Minimal Wear	
Handrails	5 - Very Light or Minimal Wear	
Glass	5 - Very Light or Minimal Wear	
Mirrors	5 - Very Light or Minimal Wear	
Exterior Lights	5 - Very Light or Minimal Wear	
Overall Exterior	5 - Very Light or Minimal Wear	
Comments	Very light wear no major issues to report	

Control Station Inspection Points

Control Station

Control Station Photos

Control Station Photos					
Control Station Type	Open Cab (OROPS)				
Control Type	Pilot Controls				
Control Configuration	Configurable (SAE and ISO)				
Seat	5 - Very Light or Minimal Wear				

Inspection Report (Skid Steer/Track Loader)

Cabin Lights	5 - Very Light or Minimal Wear
Safety Lock Out / Stop	5 - Very Light or Minimal Wear
Controls & Switches	5 - Very Light or Minimal Wear
Hour Meter Activity	5 - Very Light or Minimal Wear
Hour Meter Condition	Hour meter is functional and in good condition
Other Gauge Activity	5 - Very Light or Minimal Wear
Heater & A/C	0
Travel Alarm	5 - Very Light or Minimal Wear
Horn	5 - Very Light or Minimal Wear
Backup Camera	5 - Very Light or Minimal Wear
Control Station Overall Rating	5 - Very Light or Minimal Wear
	📍 29.771171, -95.174364

Engine Inspection Points

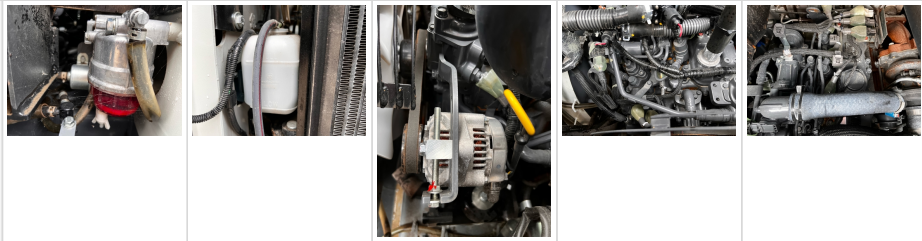

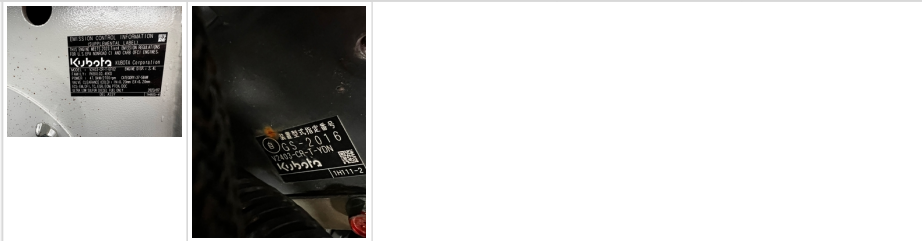
Engine

Engine Compartment Photos

Engine Data Plate



Inspection Report (Skid Steer/Track Loader)

Engine Compartment Photos	
	
	
Engine Type (Make, Model, Cylinders, Hp)	Kubota, V2403-CR-T-EF02
Emissions Tier	Tier 4F
Engine Fuel Type	Diesel
Blow-by (Visual Observation Check)	No
Unusual Noises (Upon Start-up, Idle, Shutdown)	No
Engine Smoke (Upon Start-up, Idle, Shutdown)	No
Engine Exhaust Color	Clear
Battery	5 - Very Light or Minimal Wear
Battery Condition	Clean & dry appearance, tight connections
Radiator	5 - Very Light or Minimal Wear
Radiator Condition	Radiator fins & components appear to be in good working order, no signs of damage or leaks
Belts	5 - Very Light or Minimal Wear
Belt Condition	Belts appear in good condition & alignment with proper tension
Hoses	5 - Very Light or Minimal Wear
Hose Condition	Firm, pliant hoses with no signs of wear or leaks
Water Pump	5 - Very Light or Minimal Wear
Water Pump Condition	No unusual pump noises heard
Cooling System Leaks	No
Coolant Appearance	5 - Very Light or Minimal Wear


Inspection Report (Skid Steer/Track Loader)

Coolant Appearance Notes	Normal Translucent appearance, no visual signs of contamination
Oil Leaks	No
Oil Appearance	5 - Very Light or Minimal Wear
Oil Appearance Notes	Clean oil appearance, no signs of cross contamination
Fuel Leaks	No
Equipped with DPF (Diesel Particulate Filter)	Yes
DPF Condition	5 - Very Light or Minimal Wear
Requires DEF (Diesel Exhaust Fluid)	No
Overall Engine Rating	5 - Very Light or Minimal Wear
Overall Engine Appearance	Clean & dry
Overall Engine Comments	Very light wear no major issues to report

Drivetrain Inspection Points

Drivetrain

Drivetrain Inspection Points

Drivetrain Photos	
Hydrostatic Transmission?	Yes
Speeds	2 Speed
Drive Type	N/A (Track Undercarriage)
Transmission Components	0
Drive Motors	5 - Very Light or Minimal Wear
Parking Brake	0
Overall Drivetrain Rating	5 - Very Light or Minimal Wear
Overall Drivetrain Comments	Very light wear no major issues to report

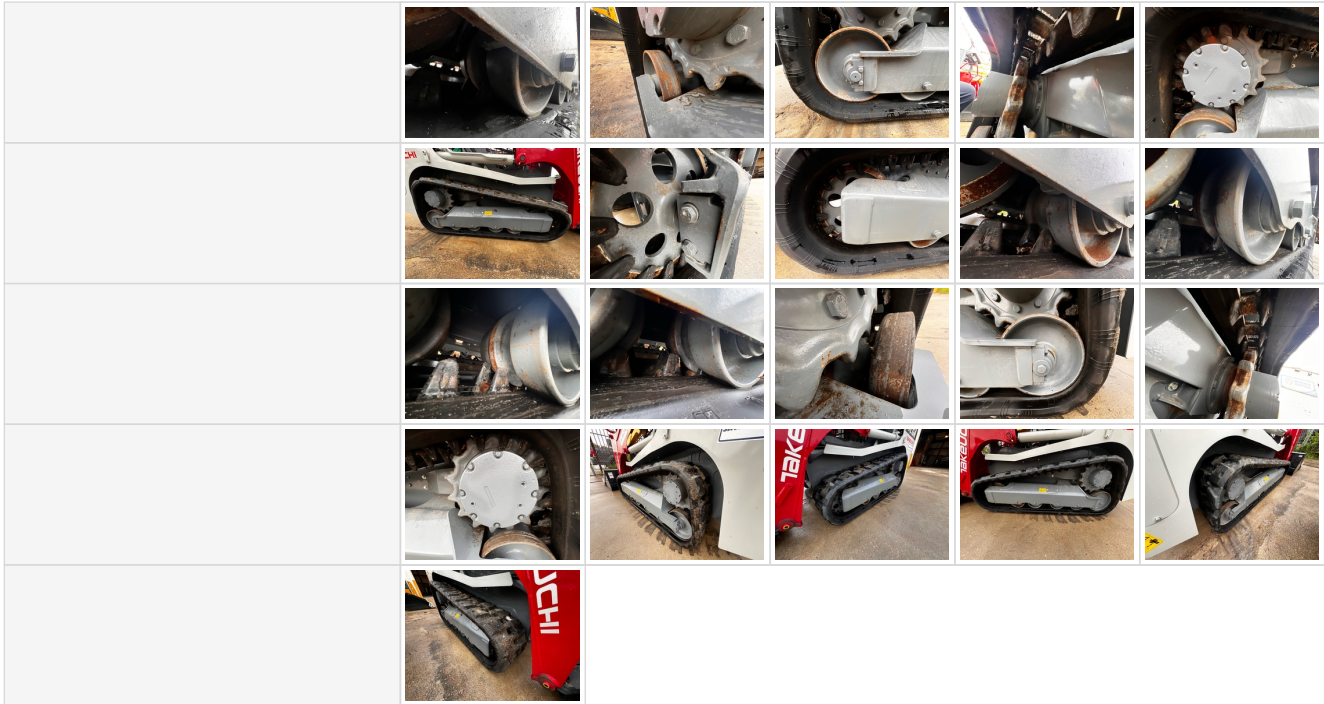
Travel System Inspection Points

Rubber Track Undercarriage

Undercarriage Photos

Undercarriage Photos	
----------------------	--

Inspection Report (Skid Steer/Track Loader)

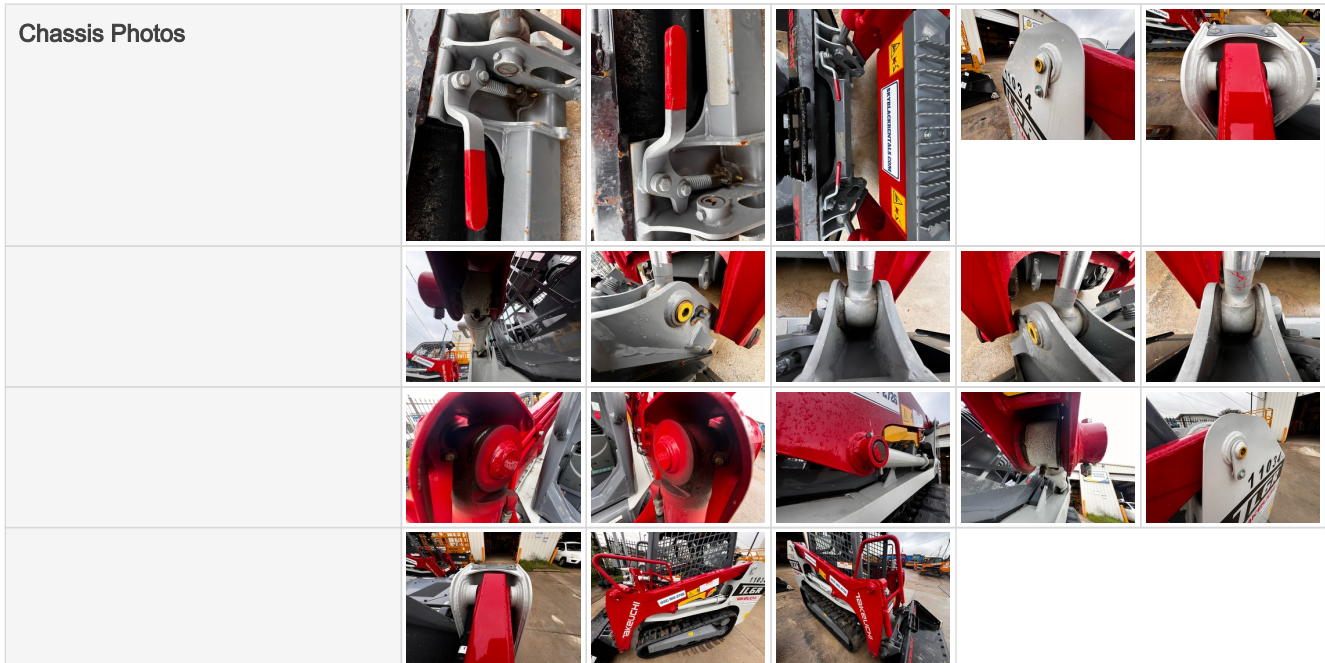


Inspection Points

Track Width (inches)	12.6"
Roller Frames	5 - Very Light or Minimal Wear
Track Belt	5 - Very Light or Minimal Wear
Rubber Belt Drive Lugs	5 - Very Light or Minimal Wear
Track Tensioners	5 - Very Light or Minimal Wear
Front Idlers	5 - Very Light or Minimal Wear
Rear Idlers	5 - Very Light or Minimal Wear
Track Rollers	5 - Very Light or Minimal Wear
Sprockets	5 - Very Light or Minimal Wear
Overall Undercarriage Rating	5 - Very Light or Minimal Wear
Left Track Belt - Percent Remaining Estimate	90%
Right Track Belt - Percent Remaining Estimate	90%
Overall Comments	Very light wear no major issues to report

Chassis Photos

Inspection Report (Skid Steer/Track Loader)



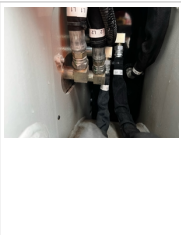
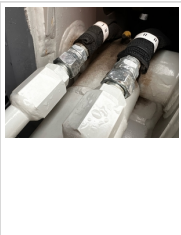

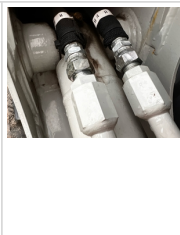

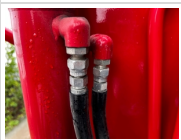


Chassis Inspection Points

Frame	5 - Very Light or Minimal Wear
Stance	5 - Very Light or Minimal Wear
Lift Arms	5 - Very Light or Minimal Wear
Chassis to Arm Pins	5 - Very Light or Minimal Wear
Quick Coupler	5 - Very Light or Minimal Wear
Quick Coupler to Arms Pins	5 - Very Light or Minimal Wear
Overall Chassis	5 - Very Light or Minimal Wear
Overall Chassis Comments	Very light wear no major issues to report

Hydraulics Overall Inspection Points

Hydraulics Overall


Hydraulic System Inspection Points

Hydraulic System Photos					
					
Wet or Damp Hydraulic Lines / Fittings	No				

Inspection Report (Skid Steer/Track Loader)

Hydraulic Lines/Fittings	5 - Very Light or Minimal Wear
Hydraulic Lines / Fittings Condition	Hydraulic lines & fittings are clean and in good condition
Hydraulic Pump(s)	5 - Very Light or Minimal Wear
Unusual Noises	No
Hydraulic Pump Notes	No unusual noises heard during operation

Hydraulic Cylinder Inspection Points

Hydraulic Cylinder Photos					
Mounting Pins	5 - Very Light or Minimal Wear				
Cylinder Oil Leaks	No				
Hydraulic System Overall	5 - Very Light or Minimal Wear				

Bucket Inspection Points

Bucket Photos					
Bucket	5 - Very Light or Minimal Wear				
Bucket Edge / Deflectors	5 - Very Light or Minimal Wear				

Functional Test

Functionality Assessment

Functionality Assessment

Engine	5 - Very Light or Minimal Wear
Transmission/Drivetrain	5 - Very Light or Minimal Wear
Travel (Forward/Reverse/Steering)	5 - Very Light or Minimal Wear
Brakes	5 - Very Light or Minimal Wear
Hydraulic System	5 - Very Light or Minimal Wear
Electric Operating System	5 - Very Light or Minimal Wear
Controls	5 - Service Required - Inoperable

Inspection Report (Skid Steer/Track Loader)

Safety Systems	5 - Very Light or Minimal Wear
Core Functions	5 - Very Light or Minimal Wear
Attachments	5 - Very Light or Minimal Wear
Overall Functional Test Comments	Very light wear no major issues to report

Overall Assessment

Overall Assessment

Inspection Rating Criteria	Rating Scale	Explanation
	1 - Service Required	Requires immediate repairs to function as expected.
	2 - Above Average Wear & Tear	Exhibits greater wear than expected given age and usage. While operable, further diagnosis may be needed.
	3 - Normal Wear & Tear	Exhibits wear that is consistent with age and usage. Operation is normal, and as expected.
	4 - Very Light or Minimal Wear	Exhibits very minimal wear. Operation is better than expected given age and usage.
	5 - Like New, Recently Replaced	Excellent condition, free of visible wear or damage. Operation is within factory specifications.
Exterior Rating	4 - Expected Wear - Fully Operable	
Interior Rating	4 - Expected Wear - Fully Operable	
Safety Rating	4 - Expected Wear - Fully Operable	
Quality Rating	4 - Expected Wear - Fully Operable	
Functionality Rating	4 - Expected Wear - Fully Operable	
Overall Rating	4 - Expected Wear - Fully Operable	
Summary Video	Click to Download	
What's Great About the Machine	The great thing about this machine is that it starts right up with no abnormal noises heard as well as function testing the machine. There were no abnormal noises heard very minimal wear throughout the machine.	
What Needs Work	N/A	
Date/Time	09-11-2024	
Inspector Name	Javier Bocanegra	