


Seller Onboarded Machine v2.0

General Info

B&B Stock Number	A1127169																				
Category	Telehandler																				
Year	2022																				
Make	Smartlift																				
Model	SL608																				
Serial Number / VIN	608508																				
Serial Number Plate / VIN Sticker	<div>SMARTLIFT<div>Smartlift A/S N.A. Christensensvej 39, DK-7900 Nykøbing Mors Tel.: +45 97 72 29 11, www.smartlift.dk</div><table><tr><td>Model:</td><td colspan="3">SL608HL E RT</td></tr><tr><td>Serial no.:</td><td>608508</td><td>Type:</td><td>OUTDOOR</td></tr><tr><td>SWL:</td><td>1320LB</td><td>Year:</td><td>10/2021</td></tr><tr><td>Self-weight:</td><td>2120LB</td><td>Battery:</td><td>24VDC</td></tr><tr><td>Power:</td><td colspan="3">110VAC 0,275KW 50HZ</td></tr></table></div>	Model:	SL608HL E RT			Serial no.:	608508	Type:	OUTDOOR	SWL:	1320LB	Year:	10/2021	Self-weight:	2120LB	Battery:	24VDC	Power:	110VAC 0,275KW 50HZ		
Model:	SL608HL E RT																				
Serial no.:	608508	Type:	OUTDOOR																		
SWL:	1320LB	Year:	10/2021																		
Self-weight:	2120LB	Battery:	24VDC																		
Power:	110VAC 0,275KW 50HZ																				
	09-19-2024 03:14 PM																				
Hour Meter or Odometer Reading	20																				

Seller Onboarded Machine v2.0

Hour Meter or Odometer Photo	
	09-19-2024 03:19 PM

Dimensions

Overall Length (ft and inches)	7.8
Overall Width (ft and inches)	2.7
Overall Height (ft and inches)	5

Off Highway Equipment

Travel System	Wheels & Tires
Drive Type	4X2
Fuel Type	Electric
Control Station Type	Walk Behind

Seller Onboarded Machine v2.0

Operator Controls	Electric
Seat Type	N/A
A/C	N/A
Heat	N/A
Radio	N/A
Reverse Camera	N/A
All of the above are fully functional	N/A

Telehandler

Forks	N/A
Work Basket	N/A
Outriggers/Stabilizers	N/A
Hydraulic Leveling	N/A
Rear Axle Stabilization	N/A
Load Camera	N/A
Load Sensor System	N/A
Side Shift	N/A
Quick Coupler	N/A

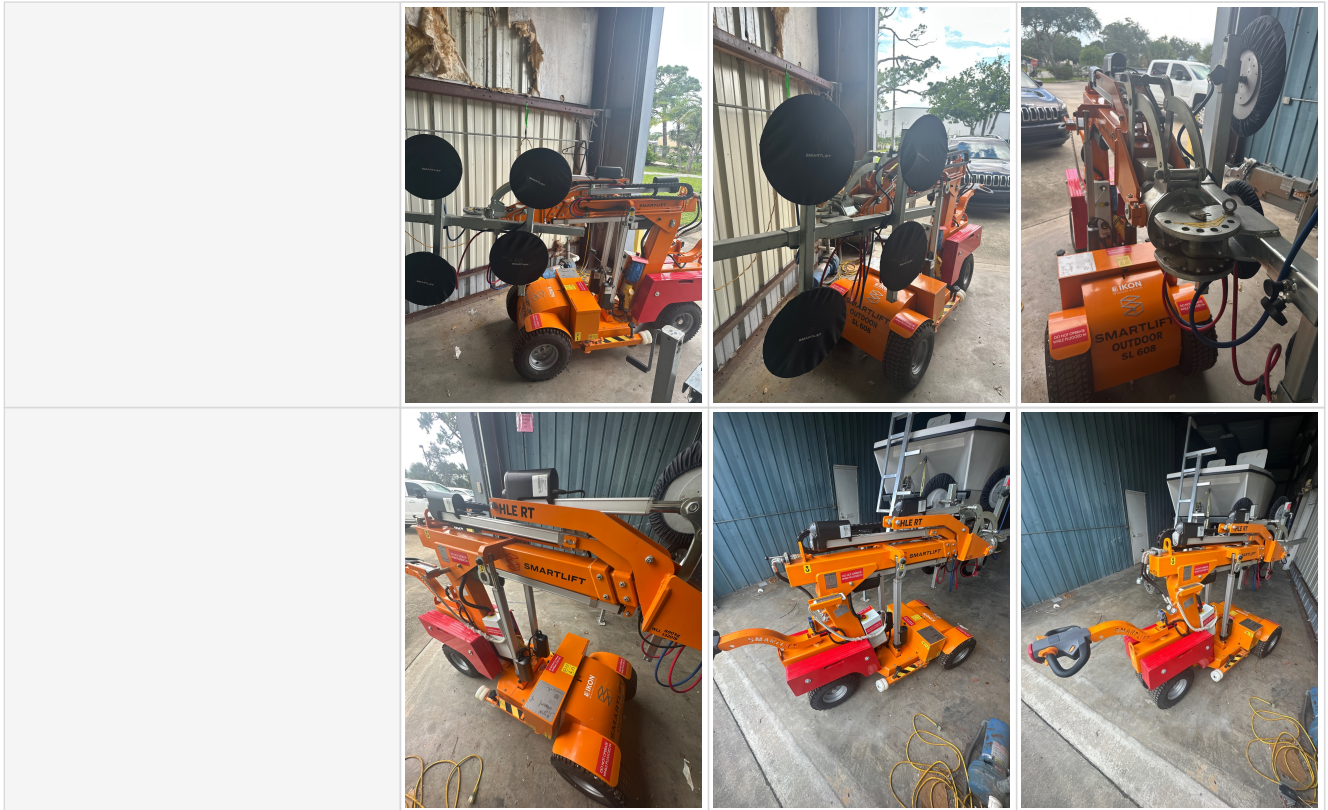
Other Features & Attachments

OMM (Operator & Maintenance Manual)	N/A
-------------------------------------	-----

360 Walkaround Photos

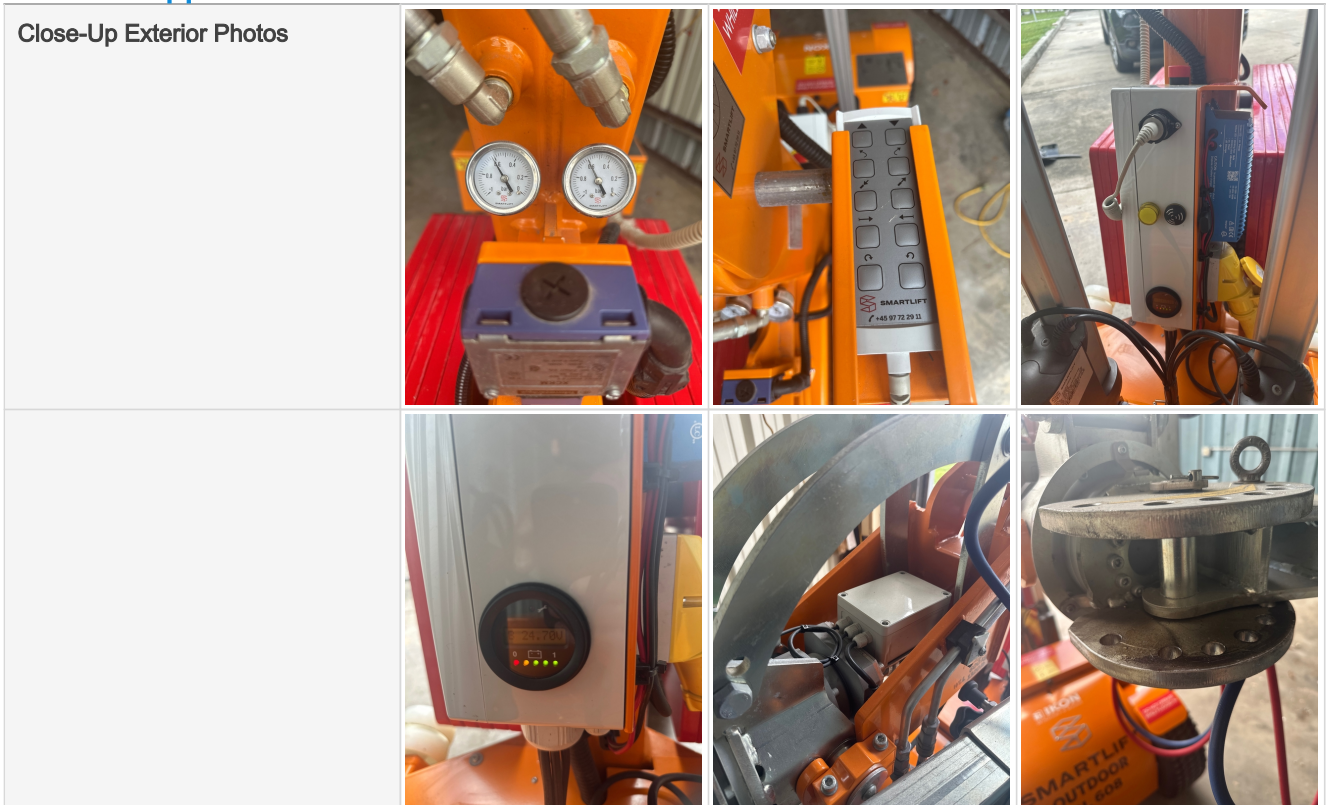
Exterior Walkaround Photos	  
----------------------------	--

Seller Onboarded Machine v2.0

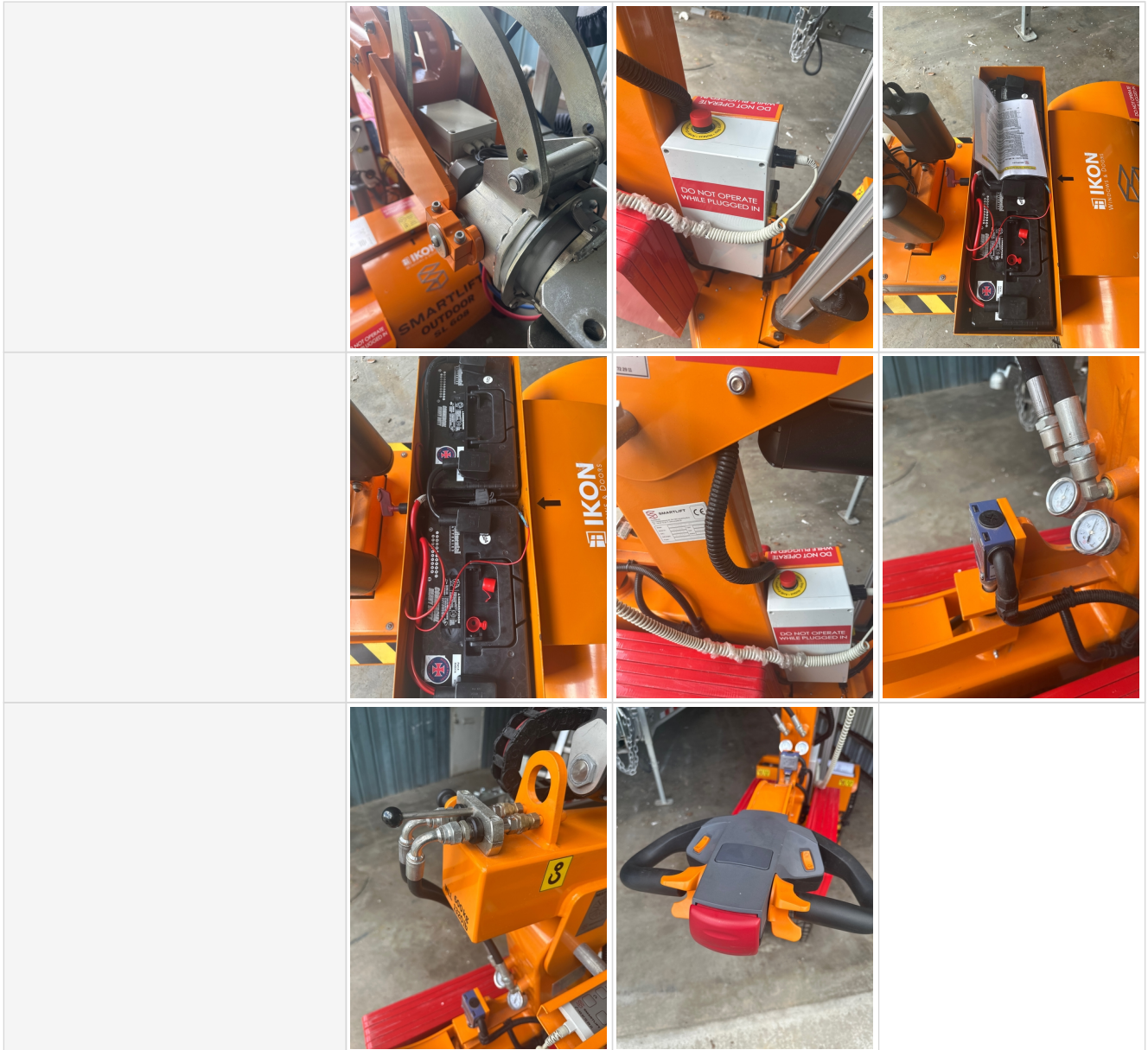


General Appearance

Close-Up Exterior Photos

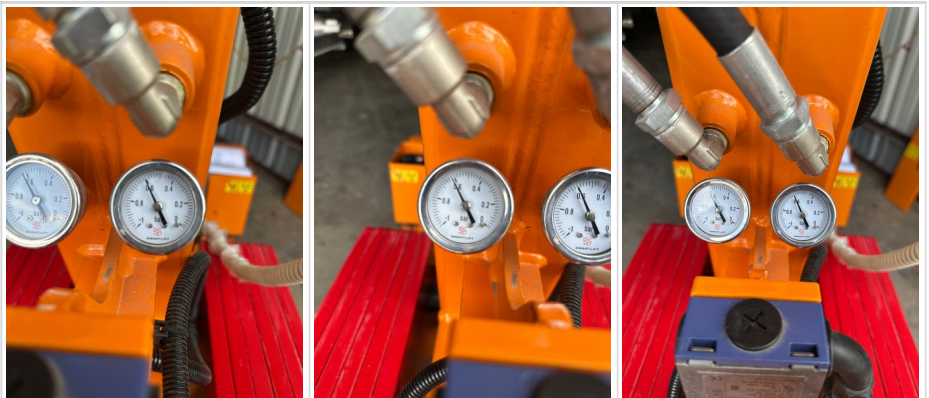


Seller Onboarded Machine v2.0

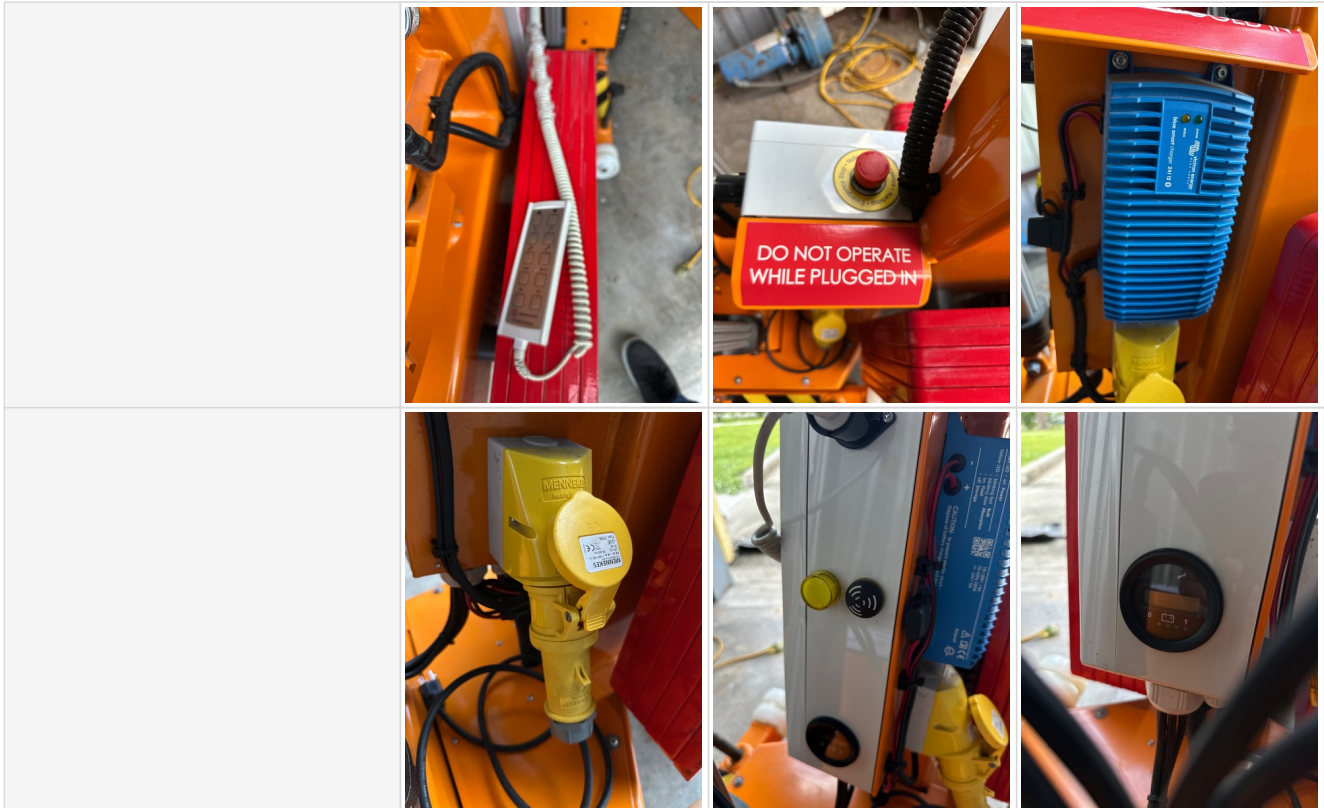


Control Station

Control Station



Seller Onboarded Machine v2.0



Engine

Engine Compartment



Drivetrain Components

Drivetrain and Underbody Photos



Seller Onboarded Machine v2.0

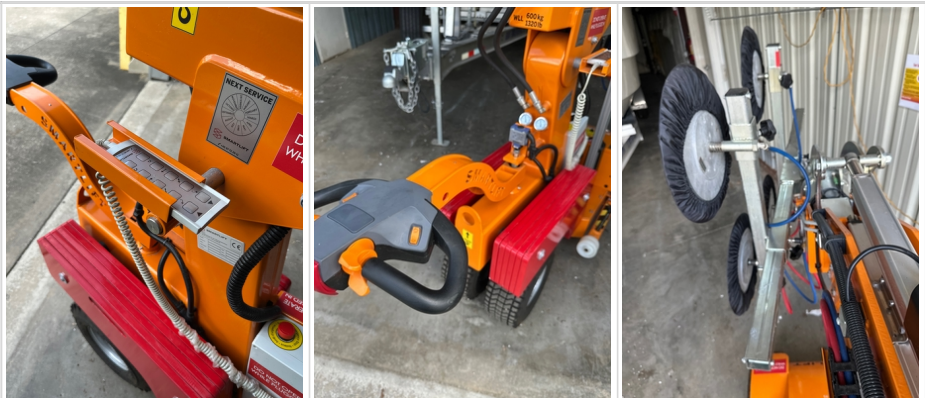
Hydraulics

Hydraulic
Pump/Fittings/Hoses/Cylinders/Pin
s

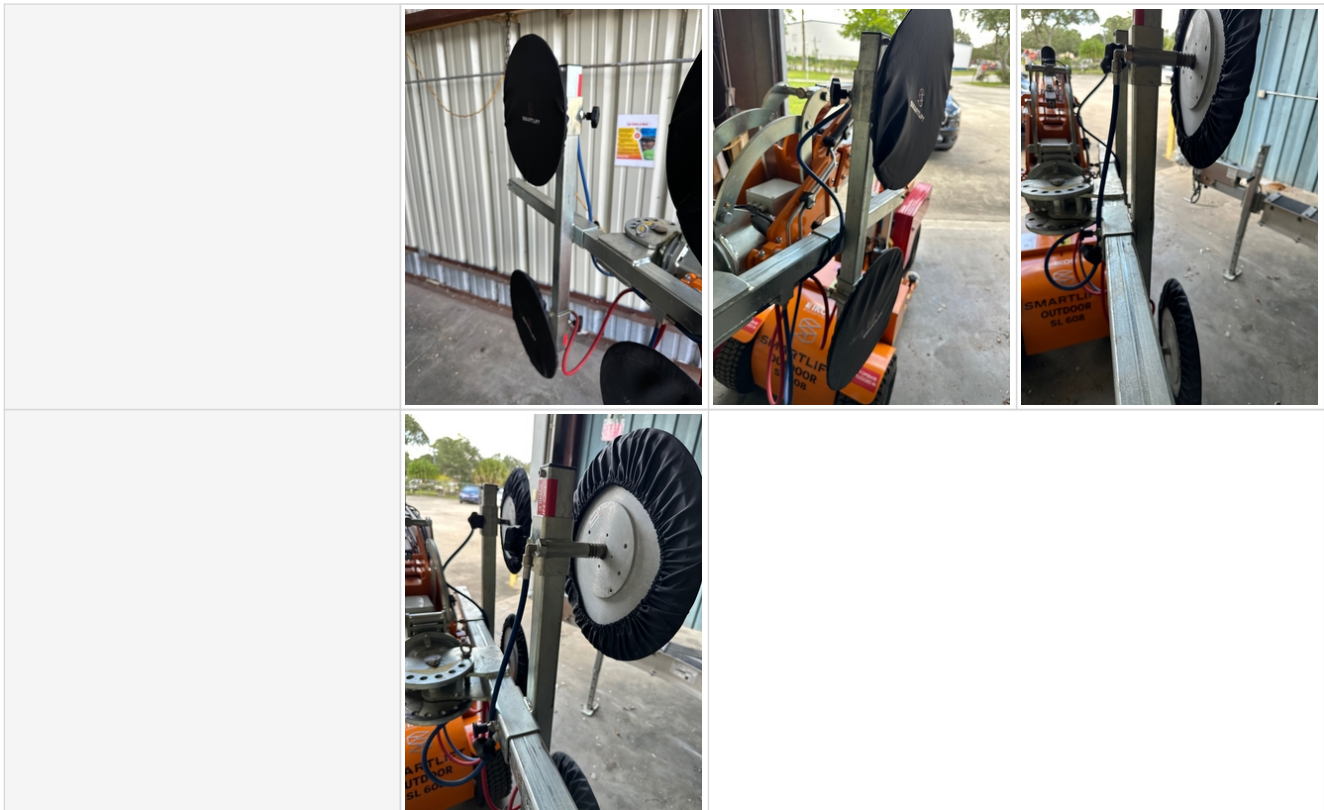


Chassis

Chassis Photos



Seller Onboarded Machine v2.0



Functionality Assessment

Is this machine fully operable?	Yes
Video - Operational or 360	Click to Download
What's great about this machine	Great for narrow entry
What needs work	Machine used for 20hrs, no needs work