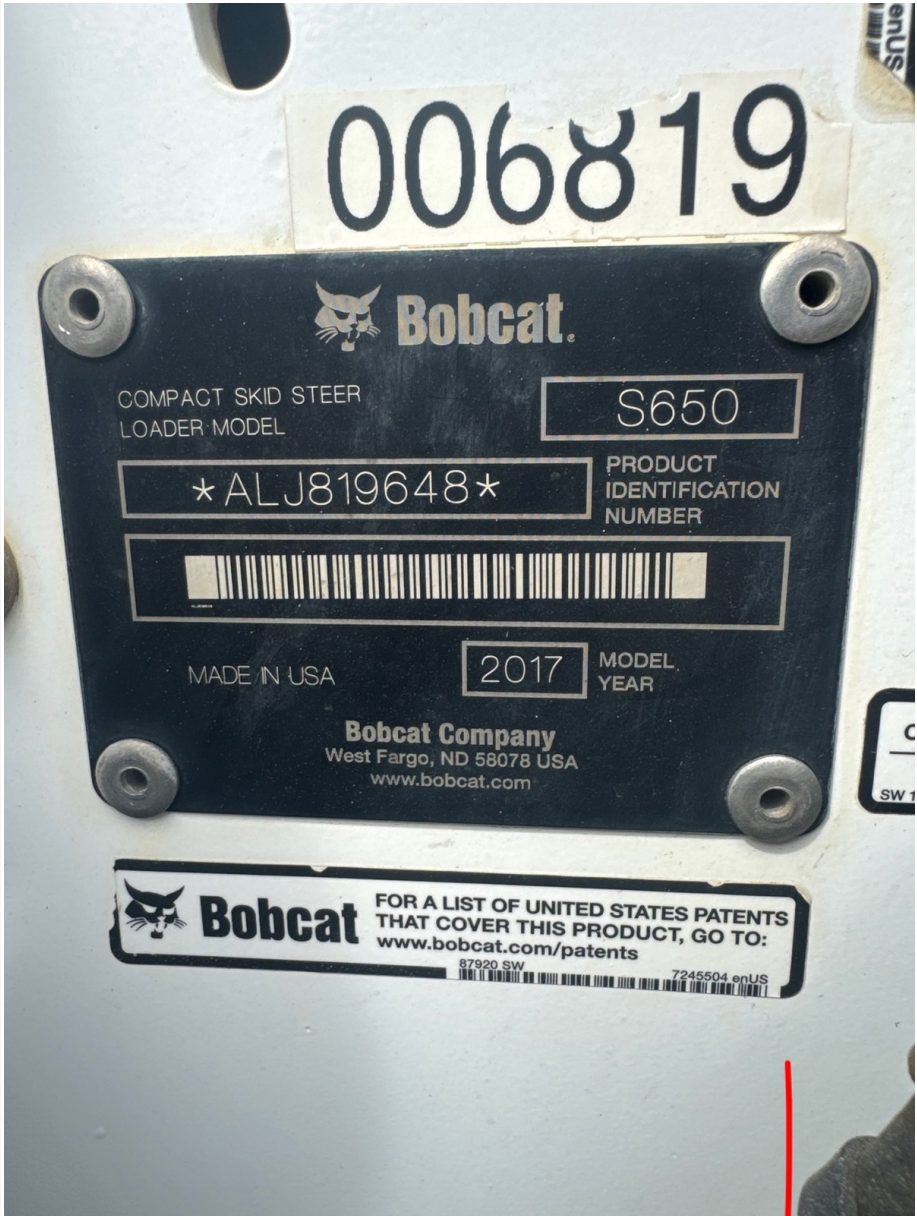


Seller Onboarded Machine v2.0

General Info

B&B Stock Number	A7452912
Category	Skid Steer
Year	2017
Make	Bobcat
Model	S650
Serial Number / VIN	ALJ819648
Serial Number Plate / VIN Sticker	 <p>The image shows a black Bobcat serial number plate and a white sticker. The sticker at the top has the number 006819. The plate contains the following information: Bobcat logo, COMPACT SKID STEER LOADER MODEL, S650 (Model), *ALJ819648* (VIN), PRODUCT IDENTIFICATION NUMBER, a barcode, MADE IN USA, 2017 (Model Year), MODEL YEAR, Bobcat Company, West Fargo, ND 58078 USA, www.bobcat.com, and a patent information sticker with the text: FOR A LIST OF UNITED STATES PATENTS THAT COVER THIS PRODUCT, GO TO: www.bobcat.com/patents. There are also small barcodes and numbers 87920 SW and 7245504 enUS on the patent sticker.</p>
	09-23-2024 02:00 PM
Hour Meter or Odometer Reading	3032

Seller Onboarded Machine v2.0

Hour Meter or Odometer Photo



09-23-2024 02:01 PM

Dimensions

Overall Length (ft and inches)	11ft 0in
Overall Width (ft and inches)	6ft 2in
Overall Height (ft and inches)	7ft 0in
Wheel Base (ft and inches) - ON HIGHWAY MACHINES	4ft 0in
Operational Weight (lbs)	8070

Off Highway Equipment

Travel System	Wheels & Tires
---------------	----------------

Seller Onboarded Machine v2.0

Drive Type	4X4
Fuel Type	Diesel
Control Station Type	Enclosed Cab (EROPS)
Operator Controls	Linkage
Seat Type	Fixed
A/C	Yes
Heat	Yes
Radio	Yes
Reverse Camera	No
All of the above are fully functional	Yes


Skid Steer

Loader Bucket	Yes
High Flow	No
Auxiliary Hydraulics	Yes
Quick Coupler	Yes
Quick Coupler Type	Hydraulic
Variable Speed	Yes

Other Features & Attachments

OMM (Operator & Maintenance Manual)	N/A
-------------------------------------	-----

360 Walkaround Photos

Exterior Walkaround Photos			
----------------------------	--	--	--

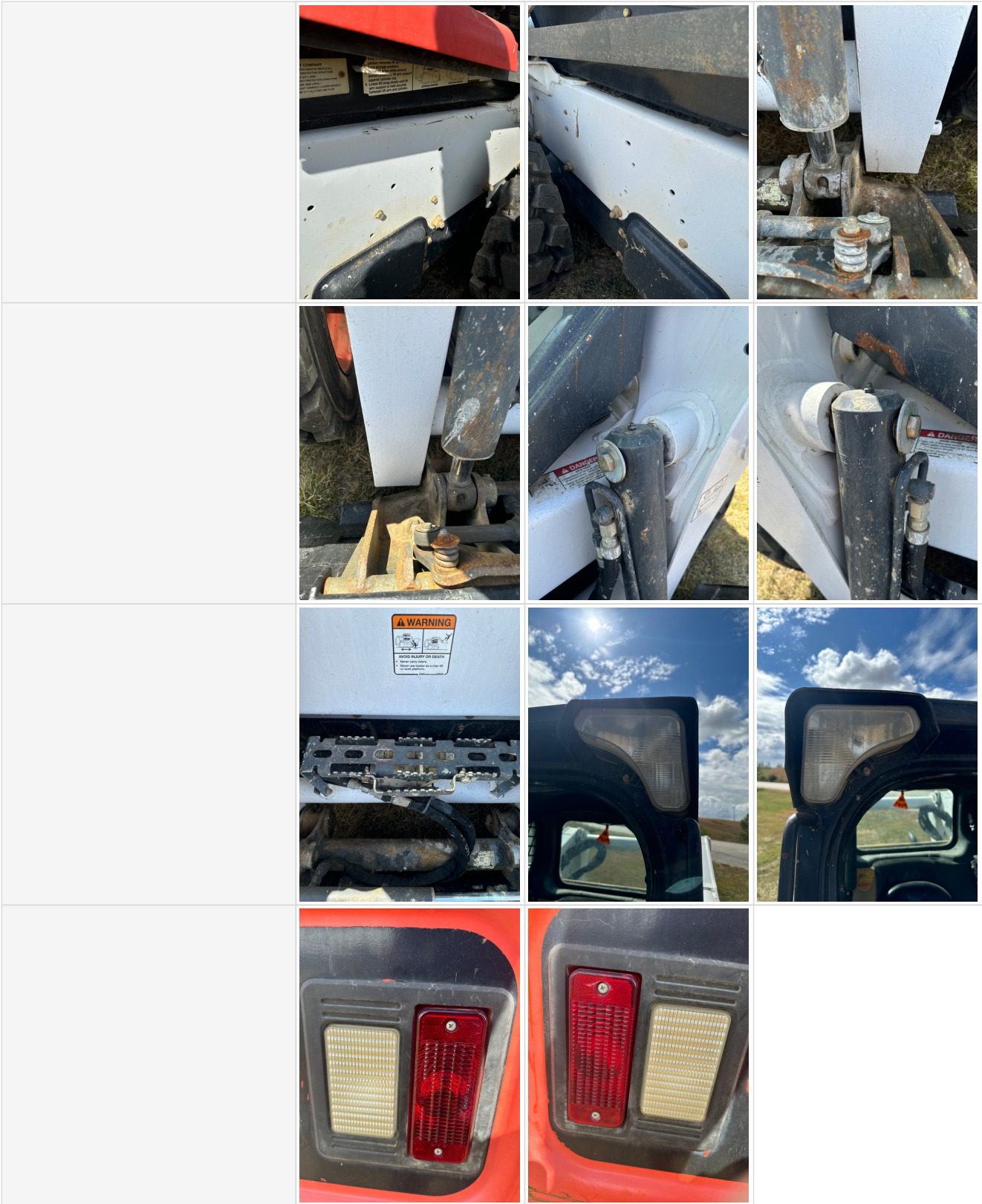
Seller Onboarded Machine v2.0

General Appearance

Close-Up Exterior Photos



Seller Onboarded Machine v2.0

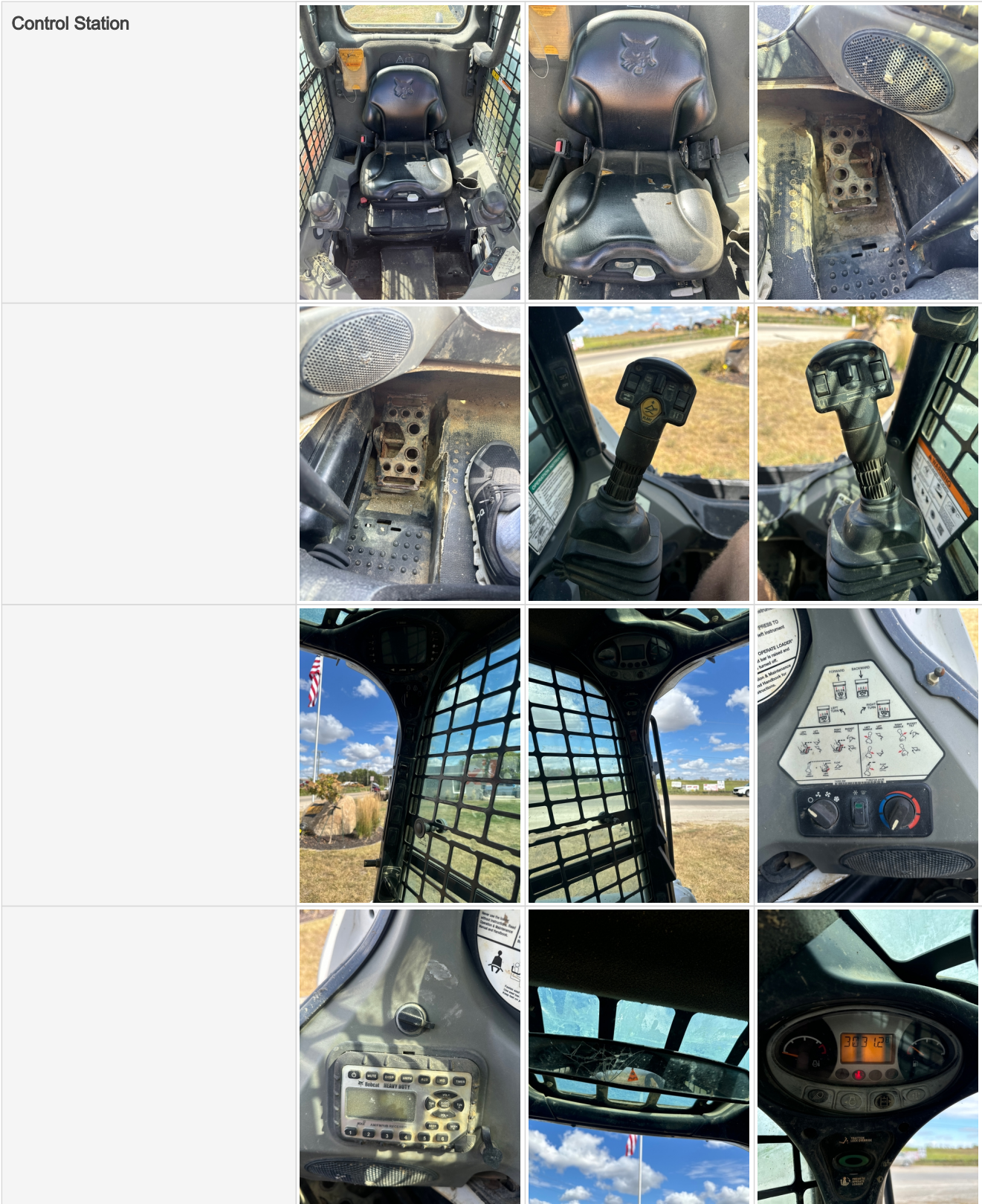


Exterior Comments


Exterior is in good condition all around. There is no door to go with this unit.

Control Station

Seller Onboarded Machine v2.0



Seller Onboarded Machine v2.0

	
<p>Control Station Overall Comments</p>	<p>All safety features are operable. Cab is in great shape. Seat adjusts and just has a few rips. AC and heat work well.</p>

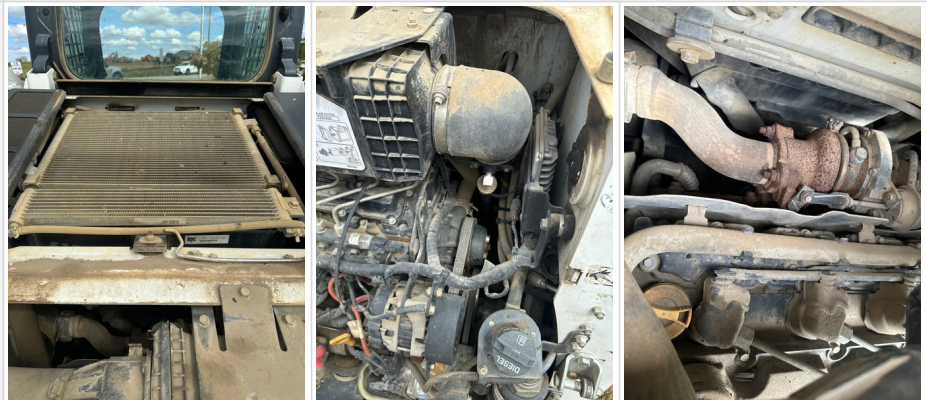
Engine

Seller Onboarded Machine v2.0

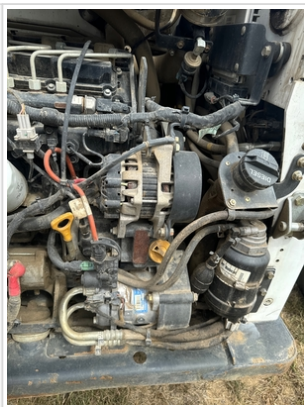

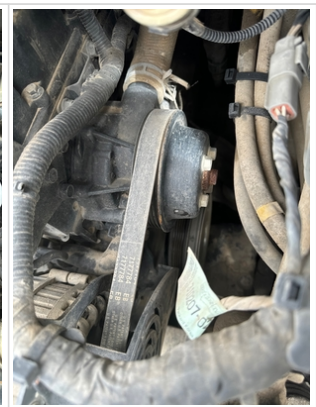



Engine Data Plate









Engine Compartment



Seller Onboarded Machine v2.0

			
			
<p>Engine Idle Video - Optional</p>	<p>Click to Download</p>		

Drivetrain Components

<p>Drivetrain and Underbody Photos</p>			
			

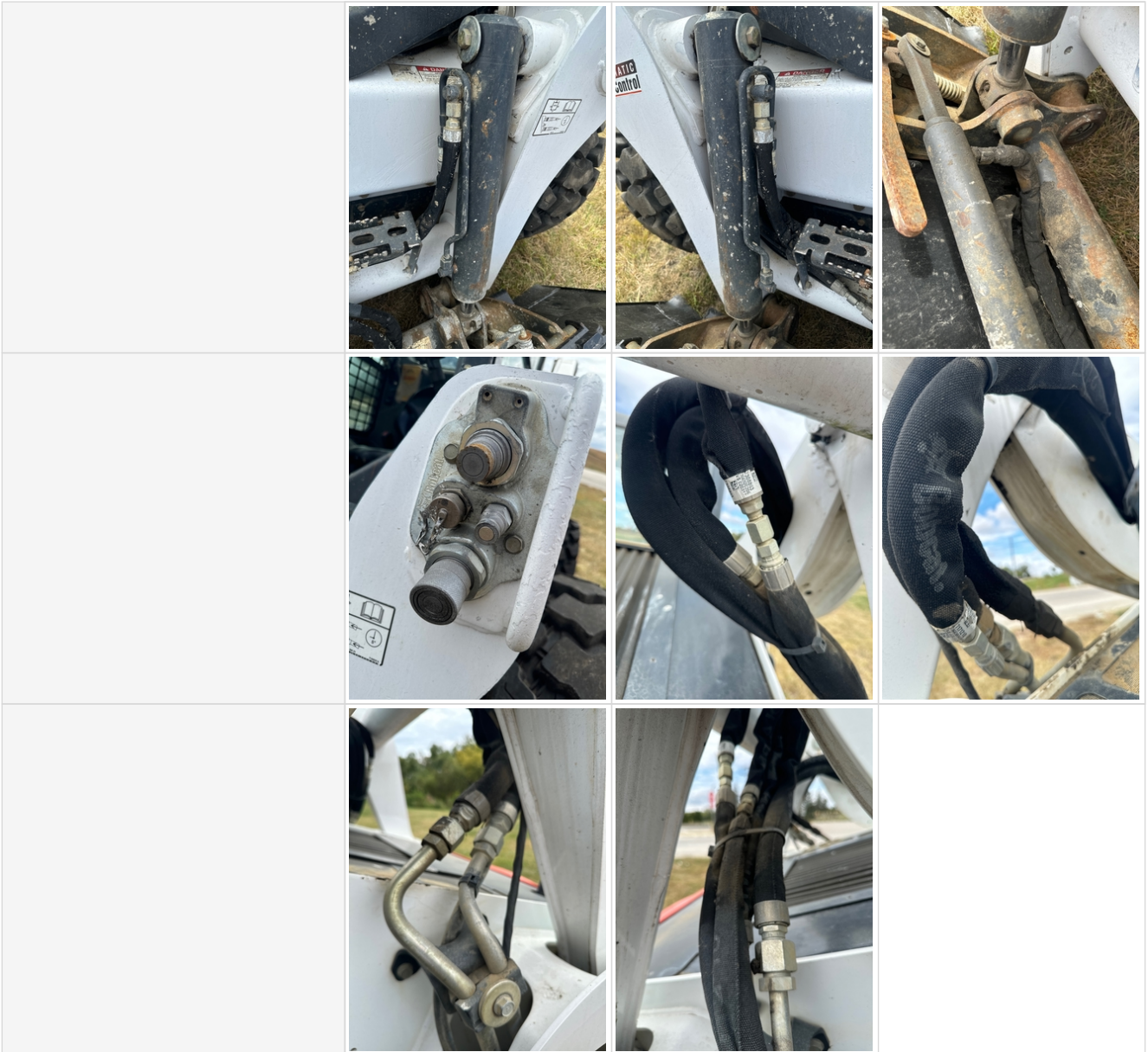
Seller Onboarded Machine v2.0



Hydraulics



Seller Onboarded Machine v2.0

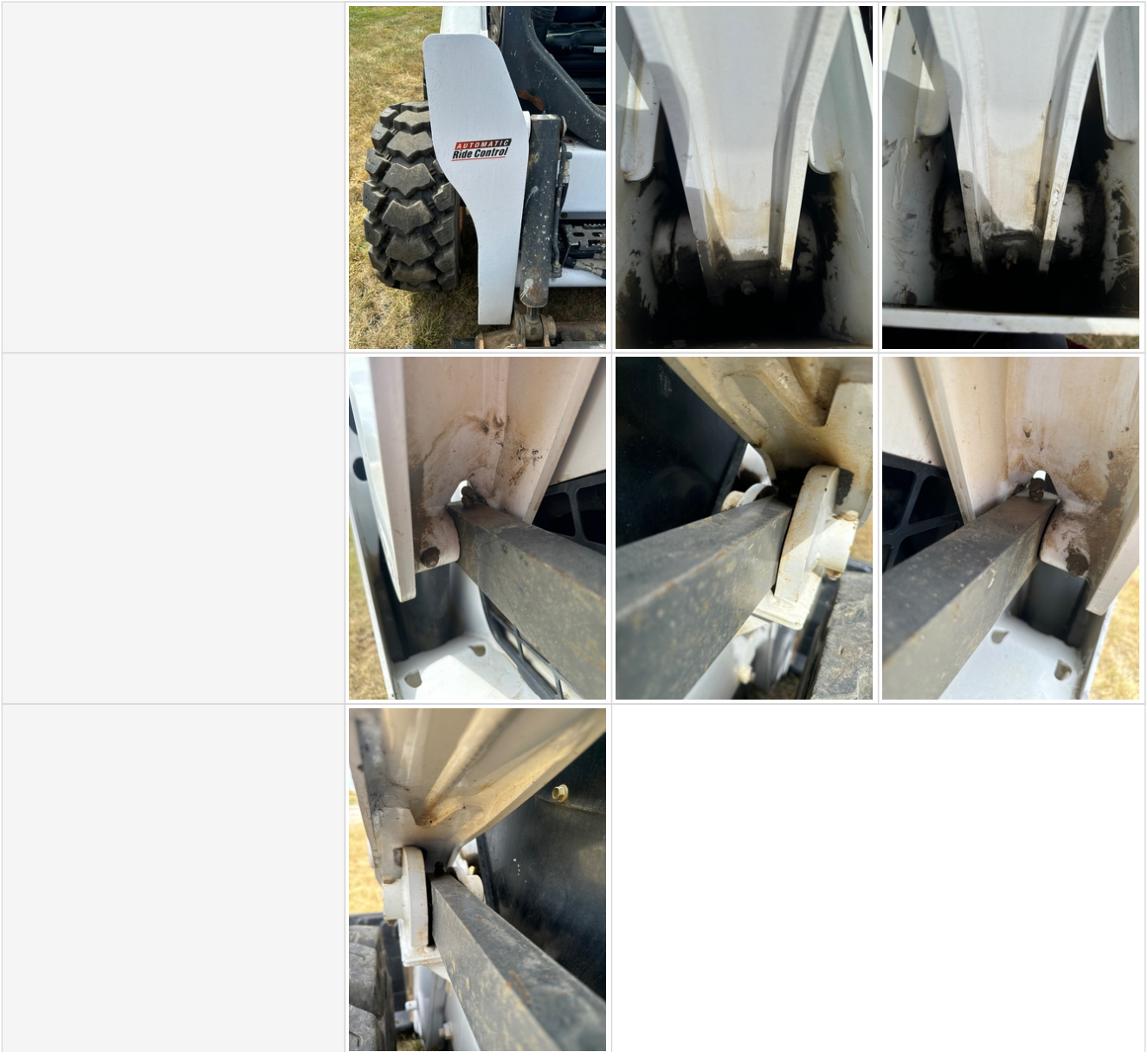


Chassis

Chassis Photos



Seller Onboarded Machine v2.0



Attachments

Attachment Photos



Seller Onboarded Machine v2.0

	
Attachment Comments	68" bucket

Functionality Assessment

Is this machine fully operable?	Yes
Video - Operational or 360	Click to Download
What's great about this machine	Great machine that has a lot of life left in it. It has been an extremely reliable machine for us.
What needs work	Rear view mirror is broken.