

## Seller Onboarded Machine v2.0

### General Info

B&B Stock Number	A5463324
Category	Trailer
Year	2019
Make	BRD
Model	550
Fleet ID	BRD 01
Serial Number / VIN	1S9AP0820KC241037
Serial Number Plate / VIN Sticker	<div><div><div><div>MANUFACTURED BY:</div><div><div>Superior<sup>®</sup></div><div>Manufacturing &amp; Engineering Corp.</div><div>Denver, Colorado</div></div><div>DATE OF MFG: 6/2019</div></div><div><div>GVWR: 3182 KG( 7000 LB)</div><div>GAWR</div><div>TIRE</div><div>RIM</div><div>COLD INFLATION PRESSURE</div><div>SGL/DUAL</div></div><div><div>FRONT</div><div>1591 KG( 3500 LB)</div><div>225/75/R15 LRC</div><div>15 X 6 JJ 545</div><div>345 KPA( 50 PSI)</div><div>SINGLE</div></div><div><div>REAR</div><div>1591 KG( 3500 LB)</div><div>225/75/R15 LRC</div><div>15 X 6 JJ 545</div><div>345 KPA( 50 PSI)</div><div>SINGLE</div></div><div><div>THIS VEHICLE CONFORMS TO ALL APPLICABLE U.S. FEDERAL MOTOR VEHICLE SAFETY STANDARDS (FMVSS) IN EFFECT ON THE DATE OF MANUFACTURE SHOWN ABOVE.</div><div>V.I.N. 1S9AP0820KC241037</div><div>TYPE OF VEHICLE: TRAILER 2FT3M</div></div></div></div>
	10-10-2024 10:53 AM
Hour Meter or Odometer Reading	not applicable
Hour Meter or Odometer Photo	<div><div><div><div>SERIES 900 METER</div><div>RESET TO ZERO</div><div>0000</div><div>FILL-RITE</div><div>100' TUBE WITH 1/2" NPT FEMALE END</div><div>TYPE 6 GALLONS</div><div>Tuthill</div></div><div><div>FILL-RITE</div><div>20 GPM</div></div></div></div>
	10-10-2024 10:54 AM

## Seller Onboarded Machine v2.0

### Dimensions

Overall Length (ft and inches)	12
Overall Width (ft and inches)	8
Overall Height (ft and inches)	6' -4"
Operational Weight (lbs)	10220

### Trailer

Number of Axles	2
Is this trailer titled?	N/A
Trailer Brakes	None
Hitch	Rear Receiver/Ball Coupler
Air Ride	N/A
Equipment Ramps	N/A
Tilt Deck	N/A
Dump Trailer	N/A
Deck Extension	N/A
Tarp System	N/A
Spare Tire	N/A
Winch	N/A

### Other Features & Attachments

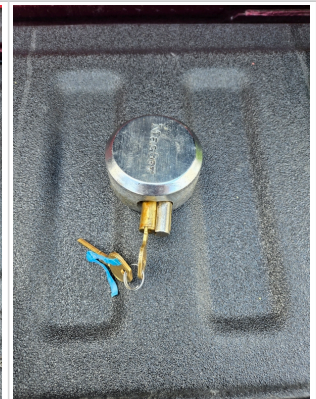
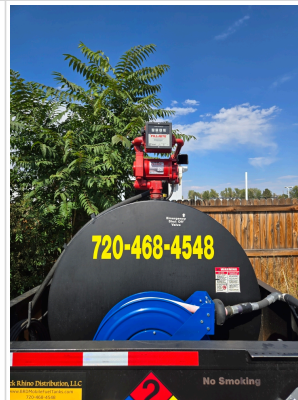
OMM (Operator & Maintenance Manual)	N/A
Other Features & Attachments	Pump is 20 GPM

### 360 Walkaround Photos

Exterior Walkaround Photos						



## General Appearance



## Seller Onboarded Machine v2.0

### Drivetrain Components

Drivetrain and Underbody Photos



### Hydraulics

Hydraulic  
Pump/Fittings/Hoses/Cylinders/Pin  
s



### Chassis

Chassis Photos



### Functionality Assessment

Is this machine fully operable?	Yes
Video - Operational or 360	<a href="#">Click to Download</a>
What's great about this machine	Can transported with a 1/2 ton truck.
What needs work	Trailer is new with minor weathering.