


Seller Onboarded Machine v2.0

General Info

B&B Stock Number	A8749159
Category	Backhoe
Year	2018
Make	Case
Model	580 Super N
Fleet ID	3374
Serial Number / VIN	JJGN58SNJJC752999
Serial Number Plate / VIN Sticker	
	10-11-2024 12:06 PM
Hour Meter or Odometer Reading	2680.3

Seller Onboarded Machine v2.0

Hour Meter or Odometer Photo



10-11-2024 12:07 PM

Dimensions

Overall Length (ft and inches)	28ft
Overall Width (ft and inches)	12ft
Overall Height (ft and inches)	9ft
Wheel Base (ft and inches) - ON HIGHWAY MACHINES	7ft and 6inches
Operational Weight (lbs)	19,300

Off Highway Equipment

Travel System	Wheels & Tires
---------------	----------------

Seller Onboarded Machine v2.0

Drive Type	4X2
Fuel Type	Diesel
Control Station Type	Canopy
Operator Controls	Pilot Controls
Seat Type	Fixed
A/C	No
Heat	No
Radio	No
Reverse Camera	No
All of the above are fully functional	N/A

Backhoe

Loader Bucket	Yes
Loader Bucket Size (yd3 / inches)	Yd2
Digging Bucket	No
Extend-a-hoe	No
Outriggers/Stabilizers	Yes
Auxiliary Hydraulics	Yes
Quick Coupler	Yes
Quick Coupler Type	Hydraulic

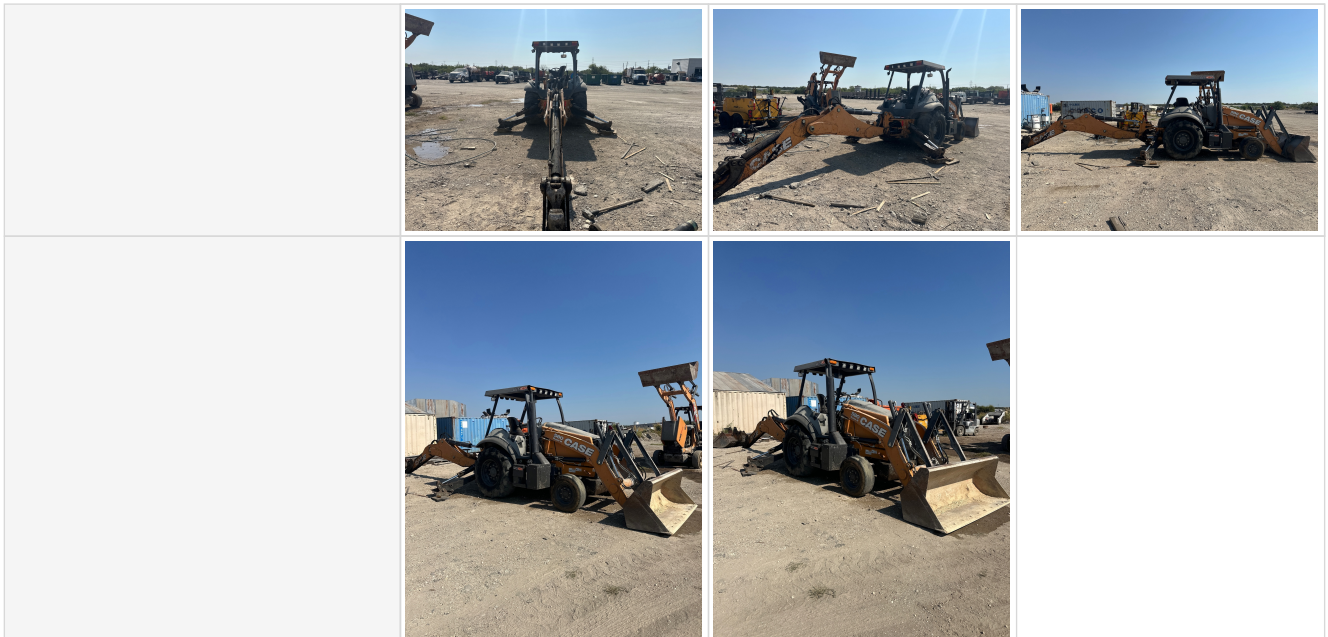
Other Features & Attachments

OMM (Operator & Maintenance Manual)	No
-------------------------------------	----

360 Walkaround Photos

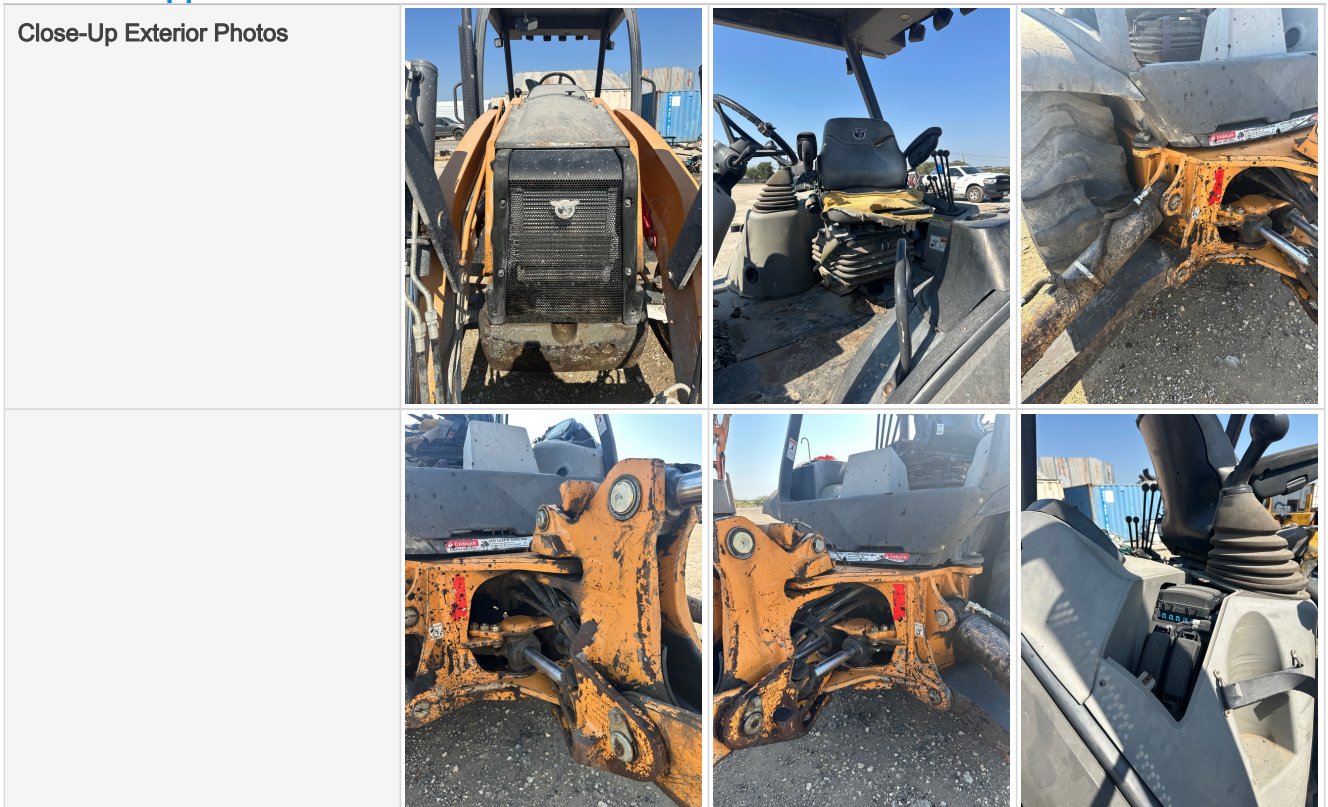
Exterior Walkaround Photos	  
----------------------------	--

Seller Onboarded Machine v2.0



General Appearance

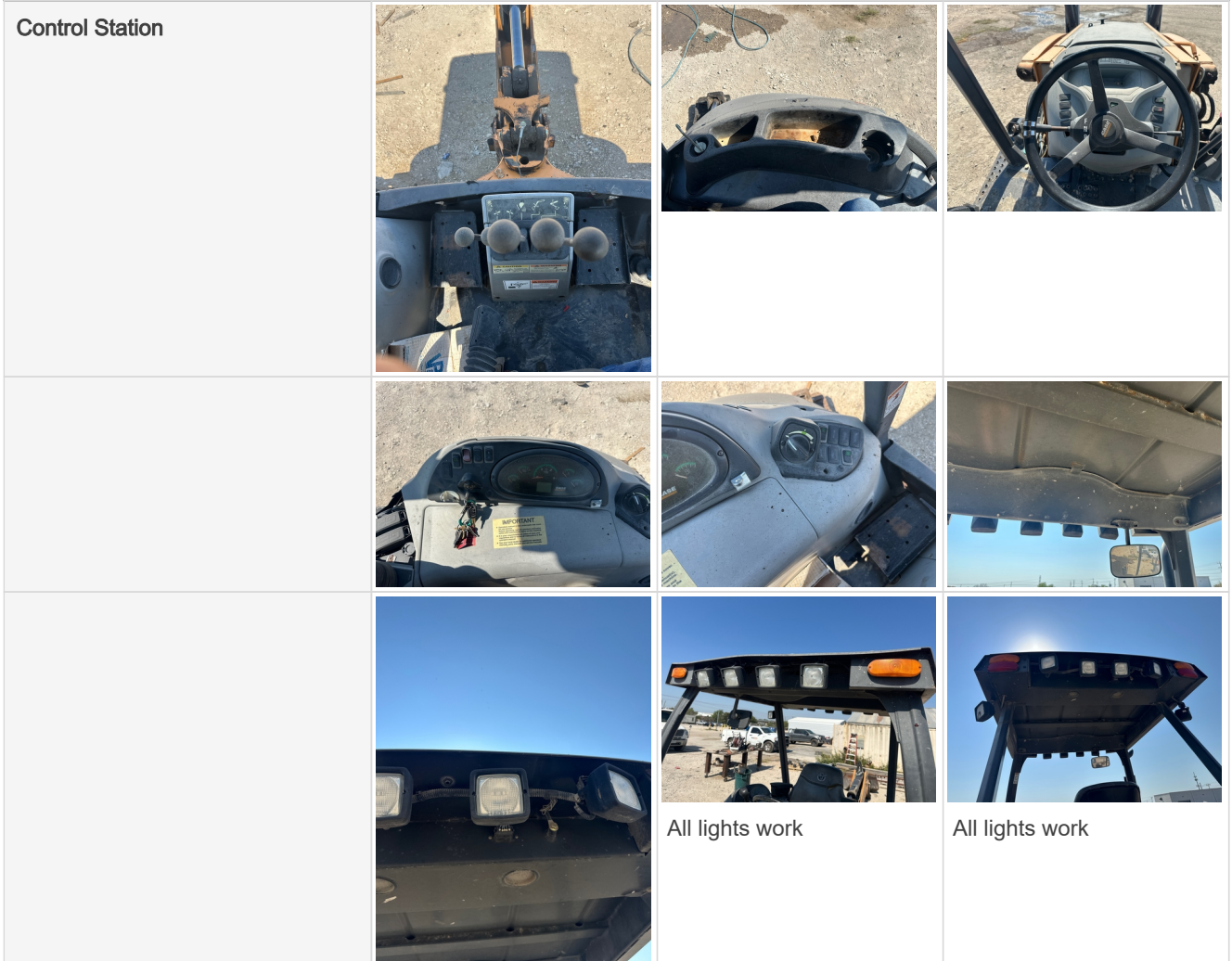
Close-Up Exterior Photos




Seller Onboarded Machine v2.0



Control Station








Seller Onboarded Machine v2.0

		
	Seat has wear	

Engine

Engine Compartment			
Engine Idle Video - Optional	Click to Download		

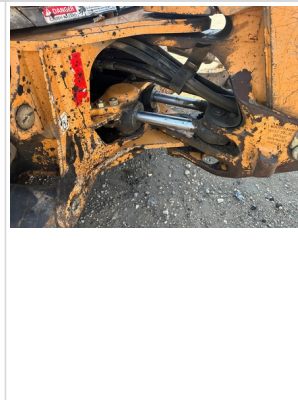
Drivetrain Components

Drivetrain and Underbody Photos			
			

Hydraulics

Seller Onboarded Machine v2.0

Hydraulic
Pump/Fittings/Hoses/Cylinders/Pin
s



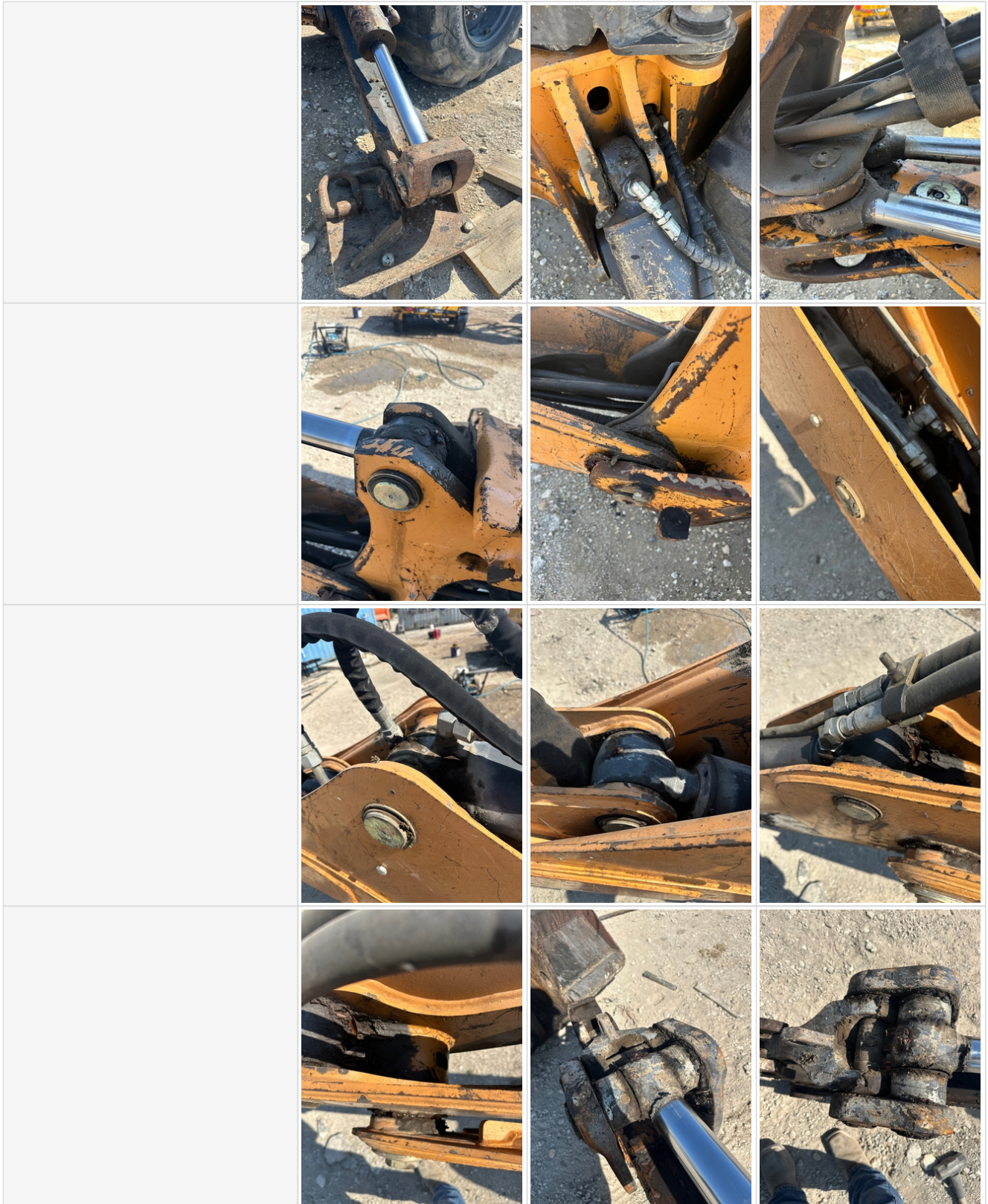
Chassis

Seller Onboarded Machine v2.0

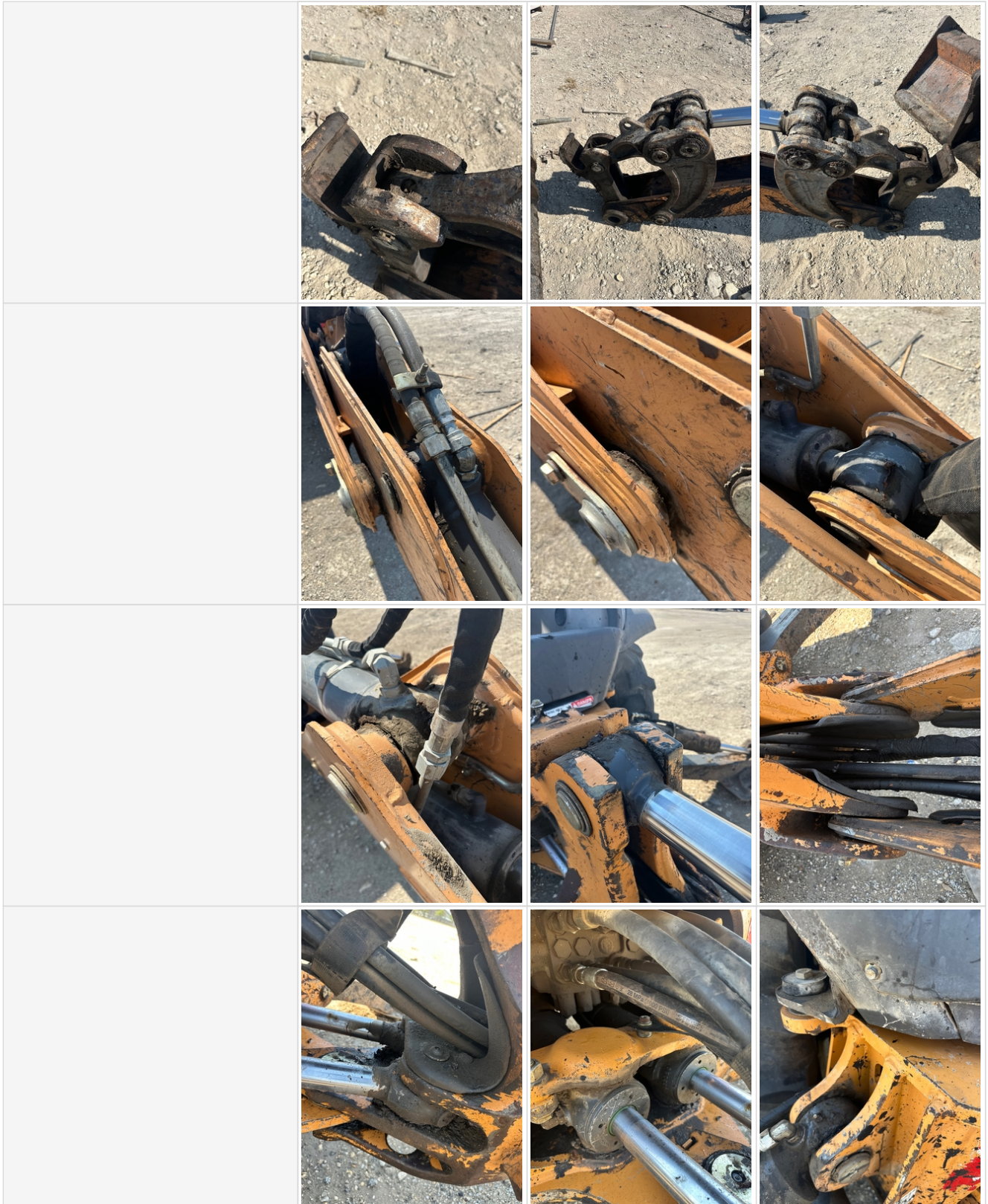
Chassis Photos



Seller Onboarded Machine v2.0



Seller Onboarded Machine v2.0



Seller Onboarded Machine v2.0



Attachments



Functionality Assessment

Is this machine fully operable?	Yes
Video - Operational or 360	Click to Download
What's great about this machine	It's runs, strong hydraulic system
What needs work	Def pump need to be replaced