

## Seller Onboarded Machine v2.0

### General Info

B&B Stock Number	A6917728
Category	Excavator
Year	2022
Make	Volvo
Model	ECR58
Serial Number / VIN	VCECR58FC00011576
Serial Number Plate / VIN Sticker	
	10-17-2024 12:55 PM
Hour Meter or Odometer Reading	287

## Seller Onboarded Machine v2.0

Hour Meter or Odometer Photo	
	10-17-2024 01:02 PM

## Dimensions

Overall Length (ft and inches)	17' 0"
Overall Width (ft and inches)	6' 7"
Overall Height (ft and inches)	8' 4"
Operational Weight (lbs)	12875

## Off Highway Equipment

Travel System	Track Undercarriage
Track Width	1' 4"
Fuel Type	Diesel

## Seller Onboarded Machine v2.0

Control Station Type	Enclosed Cab (EROPS)
Operator Controls	Pilot Controls
Seat Type	Fixed
A/C	Yes
Heat	Yes
Radio	Yes
Reverse Camera	No
All of the above are fully functional	Yes


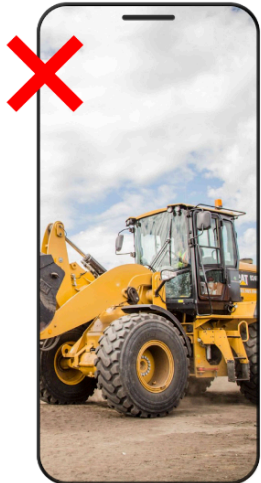
## Excavator

Blade	Yes
Bucket	Yes
Bucket Size (yd3 / inches)	36"
Auxiliary Hydraulics	Yes
Thumb	Yes
Thumb Type	Hydraulic
Quick Coupler	Yes

## Other Features & Attachments

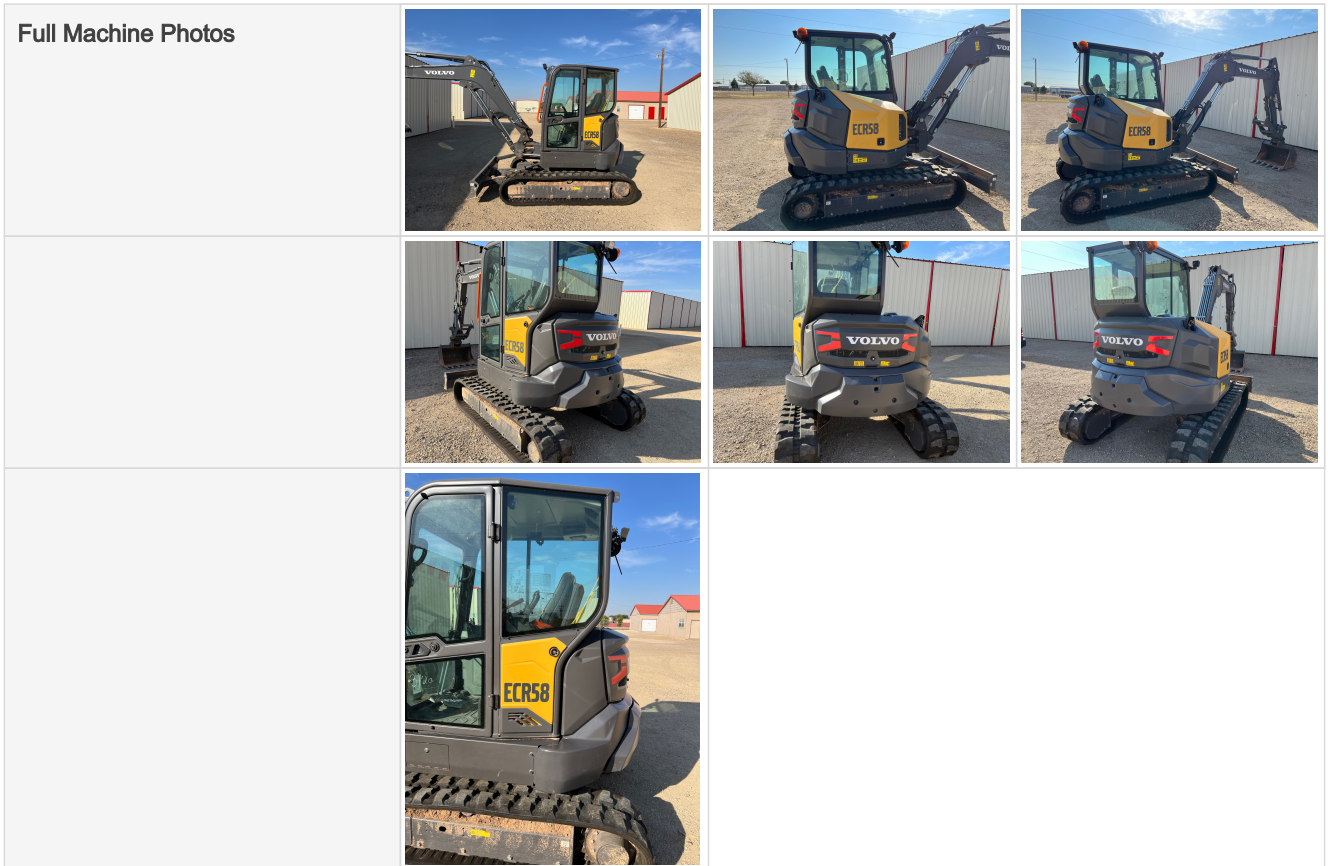
OMM (Operator & Maintenance Manual)	Yes
-------------------------------------	-----

## Full Machine Photos

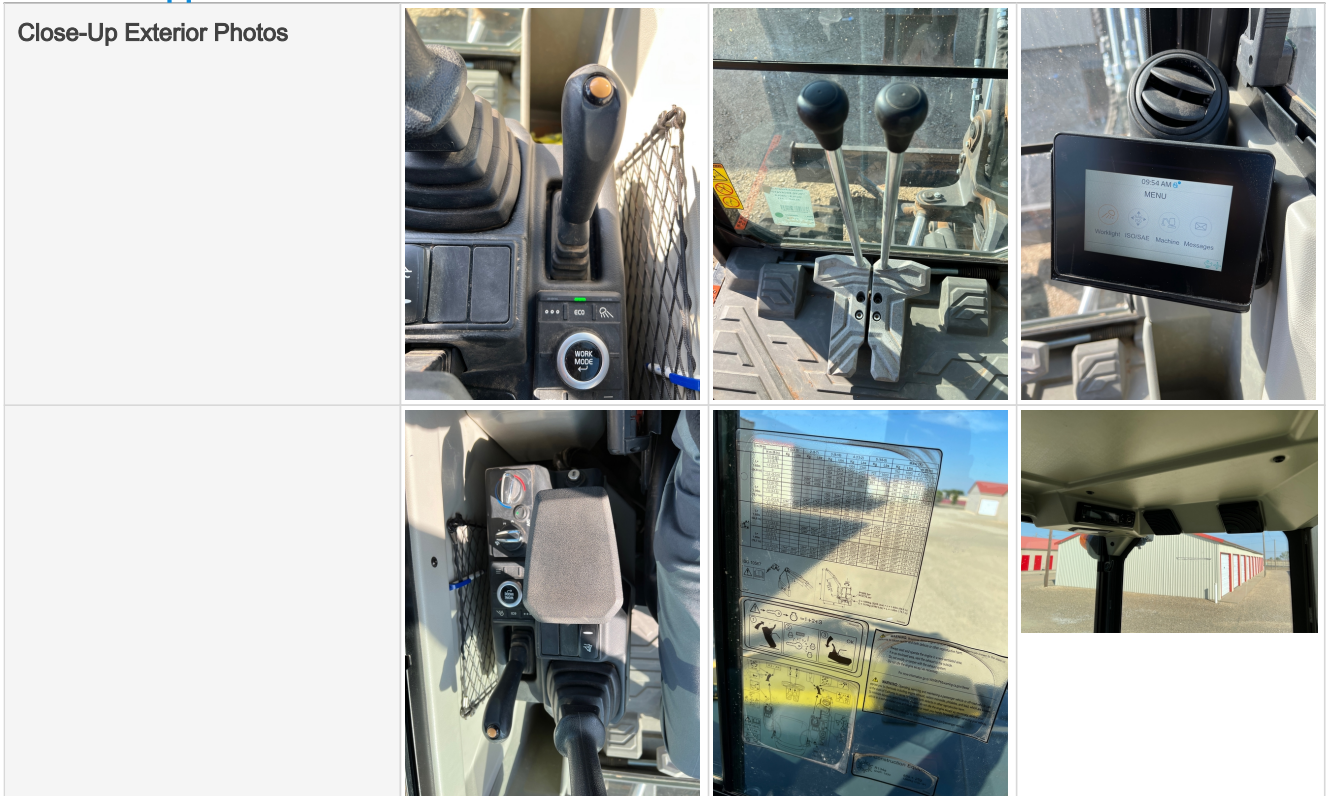
Landscape photos for best results	<div>   </div>
-----------------------------------	---



## Seller Onboarded Machine v2.0



## General Appearance

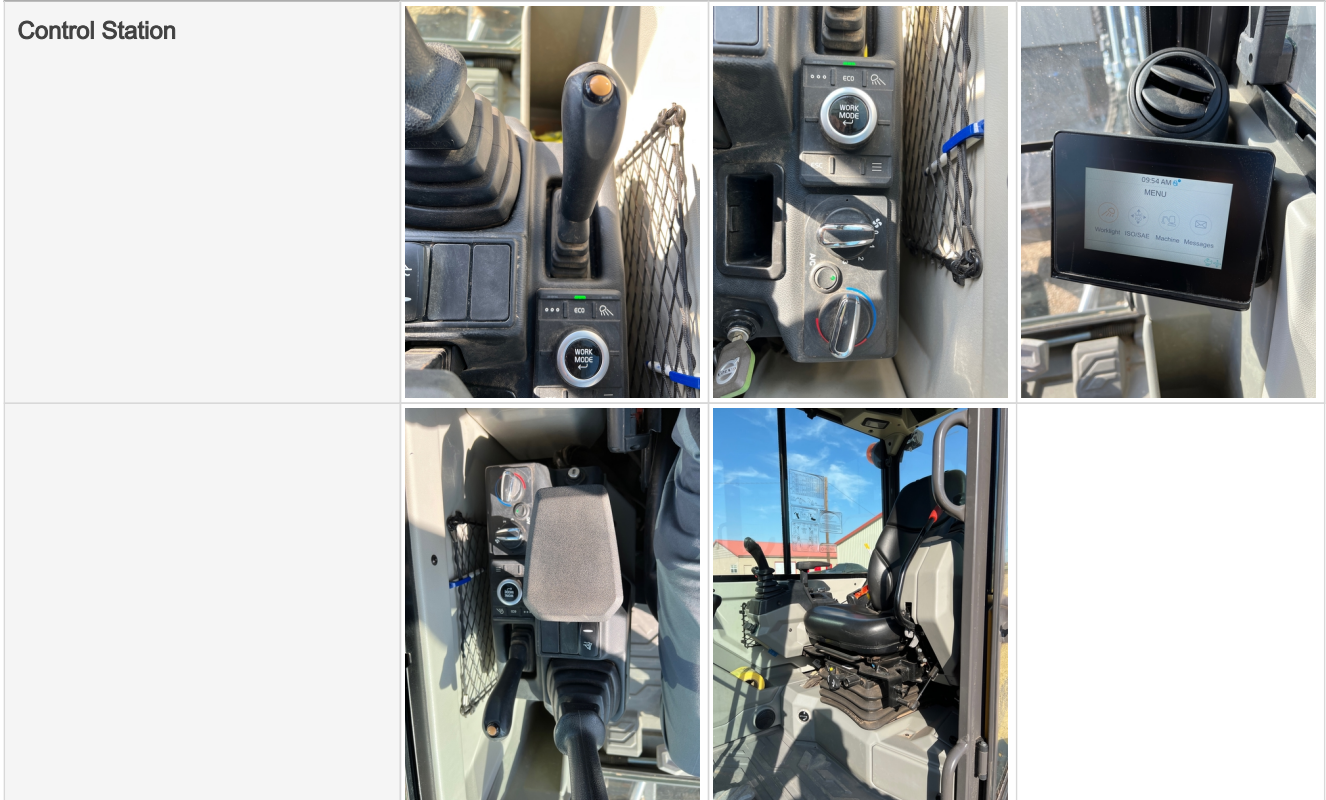




## Seller Onboarded Machine v2.0



## Control Station




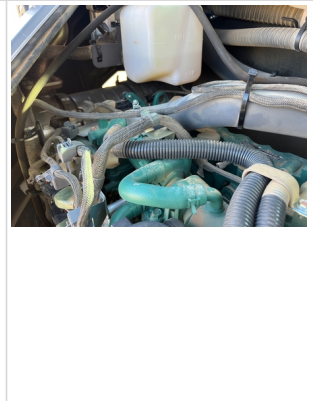


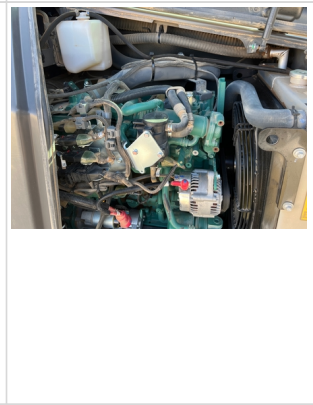

## Engine

## Seller Onboarded Machine v2.0

Engine Data Plate	
Engine Manufacturer	Volvo
Engine Compartment	  
	  



## Seller Onboarded Machine v2.0

			
			
Engine Overall Comments	This is a very nice smooth running tractor. Starts right up every time with no issue. Only 285 Hours.		




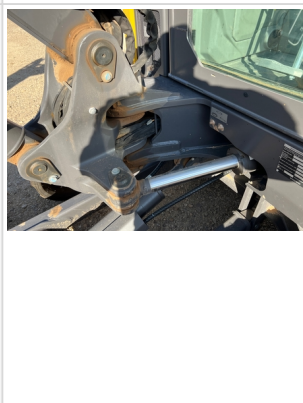

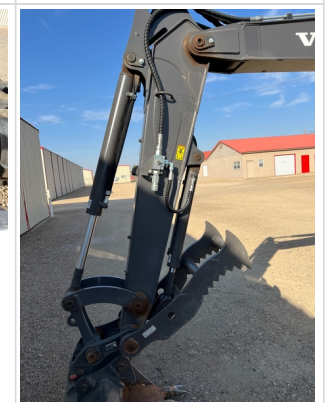
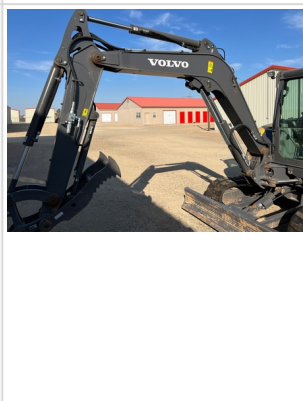

## Drivetrain Components

Drivetrain and Underbody Photos			
			
Drivetrain and Underbody Comments	Clean and dry with no apparent issues. Moves in all directions has expected.		

## Hydraulics



## Seller Onboarded Machine v2.0

Hydraulic Pump/Fittings/Hoses/Cylinders/Pins			
			
			

## Chassis

Chassis Photos			
			

## Seller Onboarded Machine v2.0

Comments	Machine frame and stance are both in good shape, no issues.
----------	---

### Functionality Assessment

Is this machine fully operable?	Yes
Video - Operational or 360	<a href="#">Click to Download</a>
What's great about this machine	This is an almost new machine, very lightly used and never abused. Runs and acts perfectly.
What needs work	Nothing - Ready to use.