



Seller Onboarded Machine v2.0

General Info

B&B Stock Number	A9338264
Category	Compact Track Loader
Year	2023
Make	Toro
Model	DINGO TX 1000
Serial Number / VIN	412803974
Serial Number Plate / VIN Sticker	 <p>THE TORO COMPANY 8111 Lyndale Avenue South Bloomington, MN 55420-1196 USA MODEL# 22328 SERIAL# 412803974 PATENT: www.ttoro.com www.ttoro.com COUNTRY OF ORIGIN: USA</p> <p>1265 kg 54 L/min 18.5 kW 207 BAR COUNTRY OF ORIGIN: USA CE CAN ICES-2/NMB-2</p> <p>WARNING: Cancer and Reproductive Harm - www.P65Warnings.com For more information, please visit www.ttoroCAProp65.com CALIFORNIA SPARK ARRESTER WARNING Operation of this equipment may create sparks that can start fires around vegetation. A spark arrester may be required. The operator should contact local fire agencies for laws or regulations relating to fire prevention requirements.</p>
	12-04-2024 07:46 PM
Hour Meter or Odometer Reading	311.4

Seller Onboarded Machine v2.0

Hour Meter or Odometer Photo



12-04-2024 07:47 PM

Dimensions

Overall Length (ft and inches)	8ft 8in
Overall Width (ft and inches)	3ft 6in
Overall Height (ft and inches)	4ft 6in

Off Highway Equipment

Travel System	Track Undercarriage
Track Width	9.5
Fuel Type	Diesel
Control Station Type	Platform







Seller Onboarded Machine v2.0

A/C	N/A
Heat	N/A
Radio	N/A
Reverse Camera	N/A
All of the above are fully functional	N/A

Compact Track Loader

High Flow	No
Variable Speed	No
Loader Bucket	Yes
Bucket Size (yd3 / inches)	42"
Auxiliary Hydraulics	Yes
Quick Coupler	Yes
Quick Coupler Type	Manual

Full Machine Photos

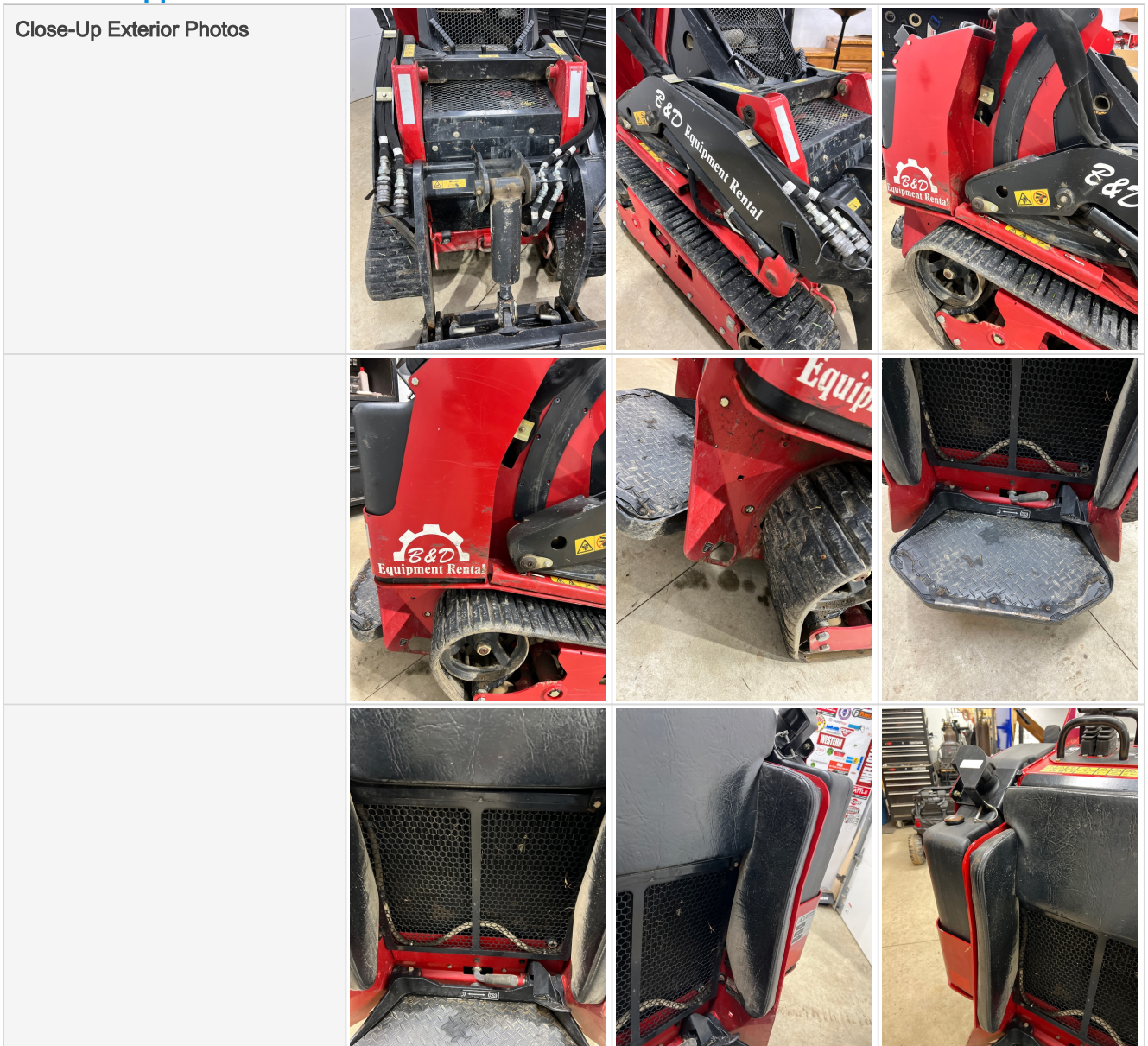
Full Machine Photos			
			

Seller Onboarded Machine v2.0

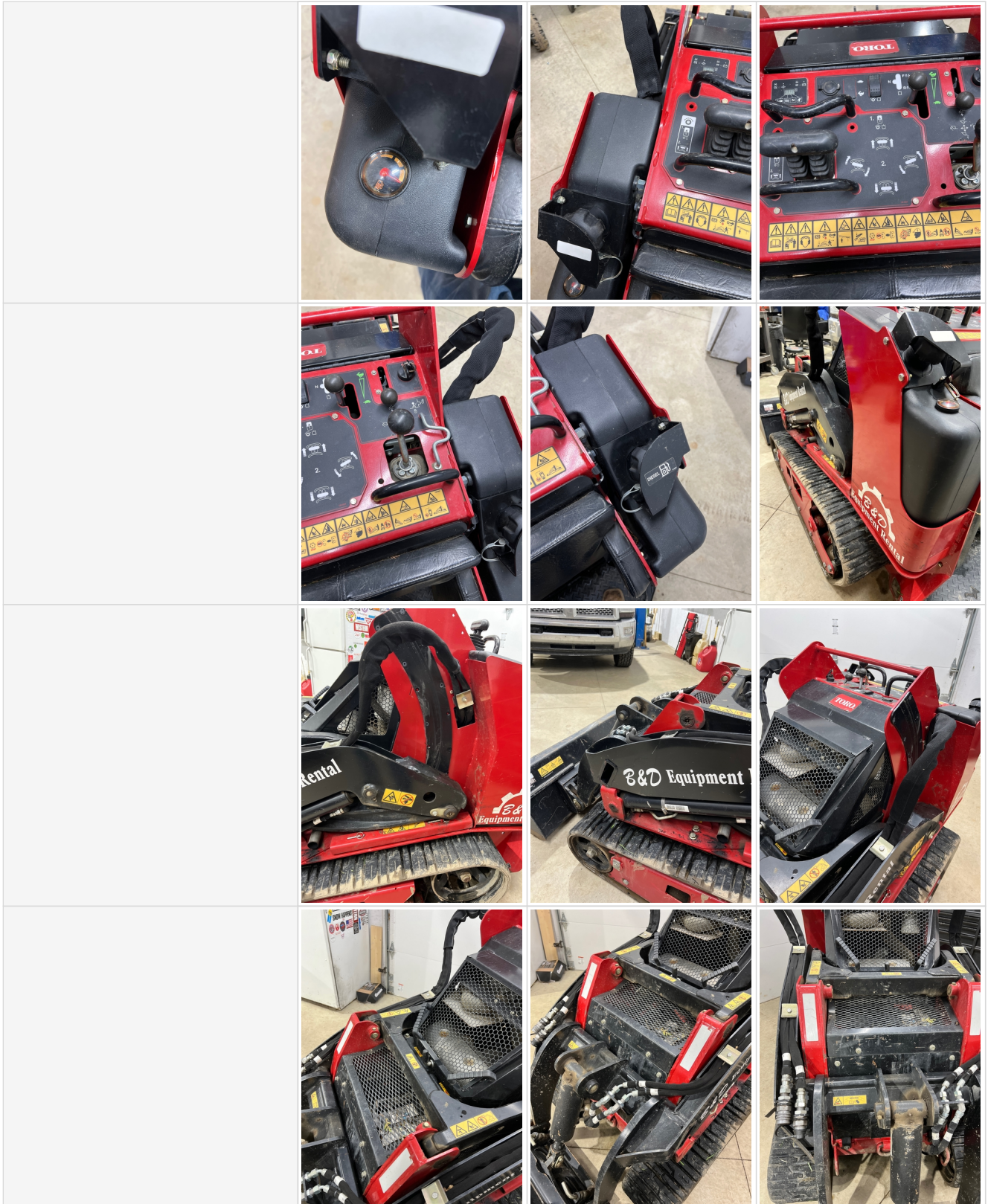


General Appearance

Close-Up Exterior Photos



Seller Onboarded Machine v2.0



Control Station

Seller Onboarded Machine v2.0

Control Station

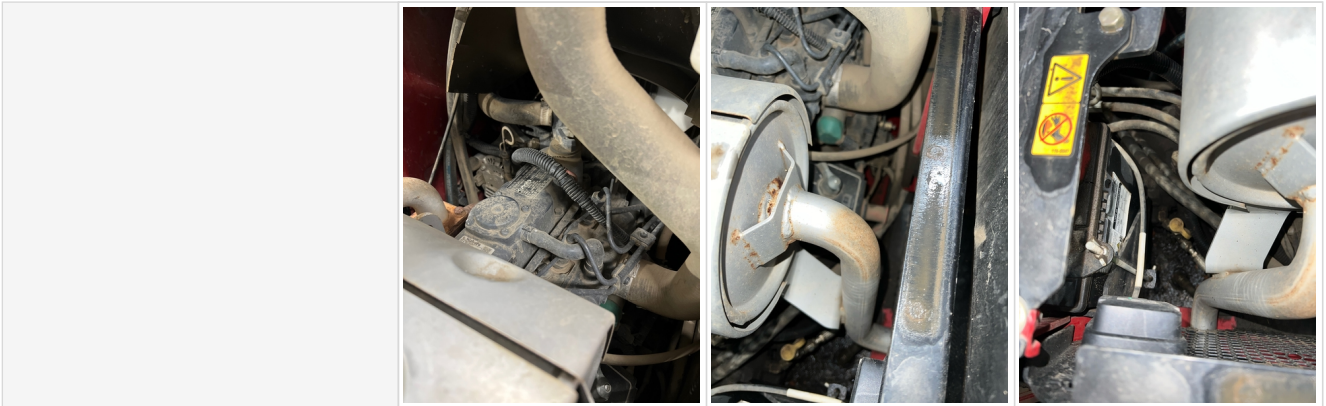


Engine

Engine Compartment

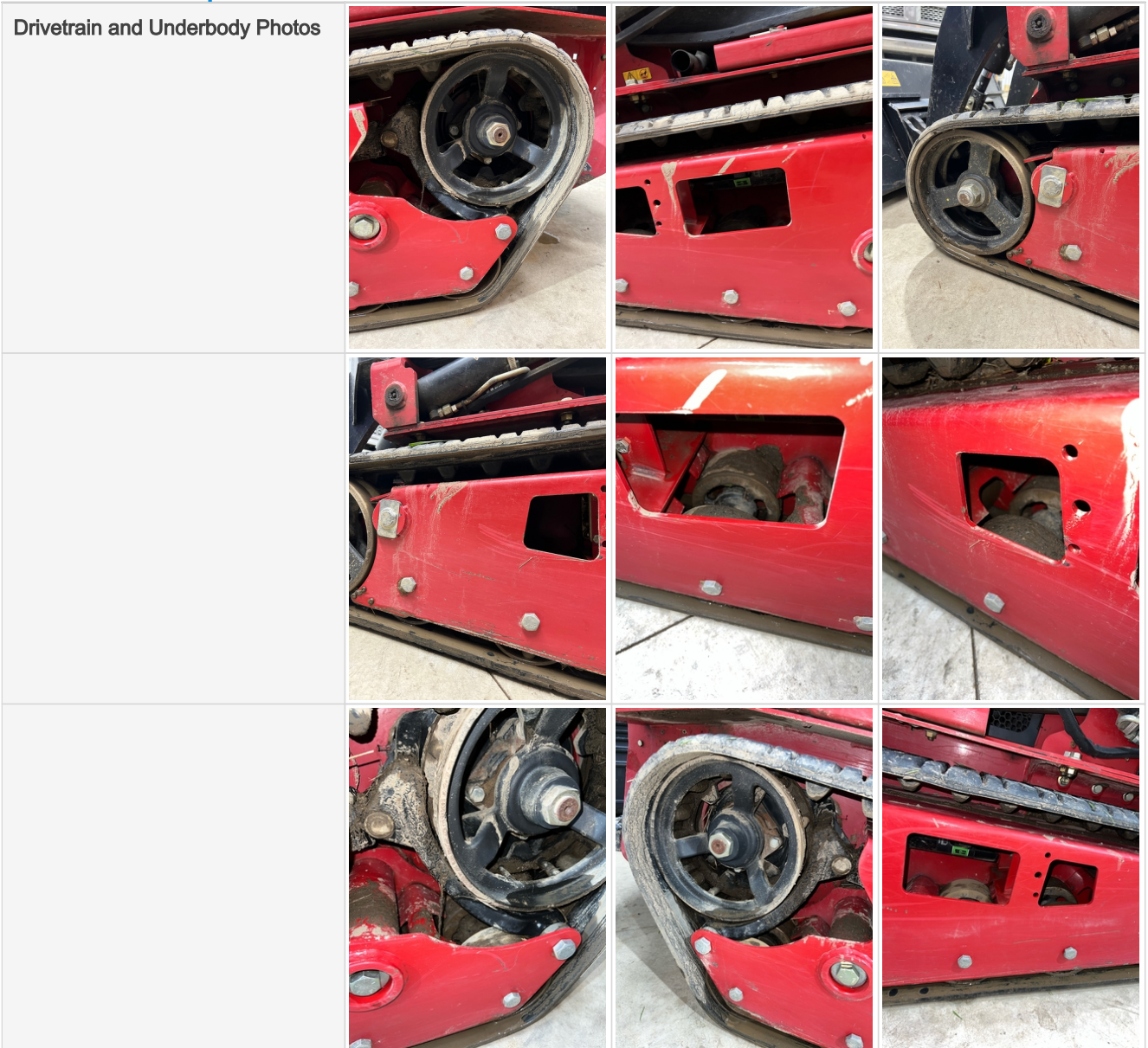


Seller Onboarded Machine v2.0

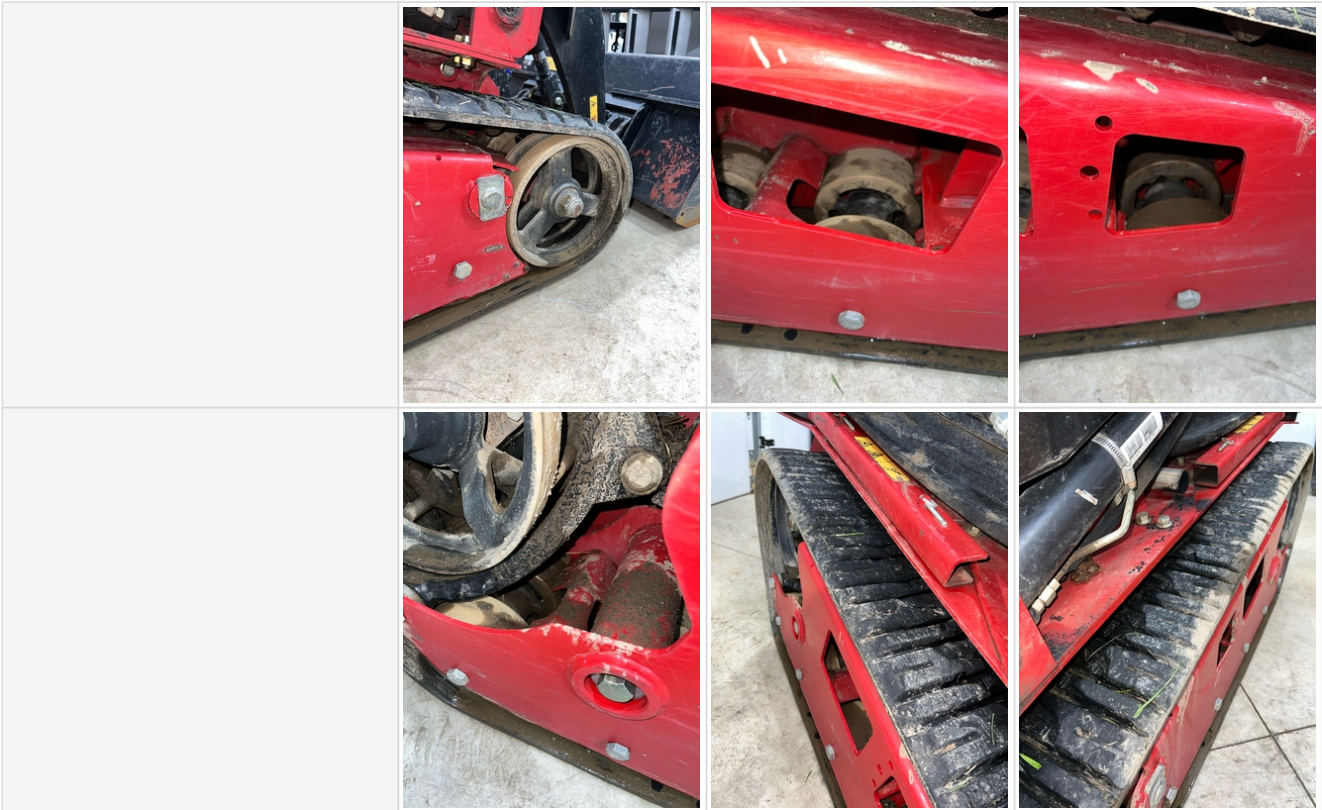


Drivetrain Components

Drivetrain and Underbody Photos



Seller Onboarded Machine v2.0



Hydraulics







Chassis

Seller Onboarded Machine v2.0

Chassis Photos			
----------------	---	--	--

Attachments

Attachment Photos			
			

Functionality Assessment

Is this machine fully operable?	Yes
Video - Operational or 360	Click to Download
What's great about this machine	Low hours, not abused. Regular maintenance.
What needs work	Needs nothing