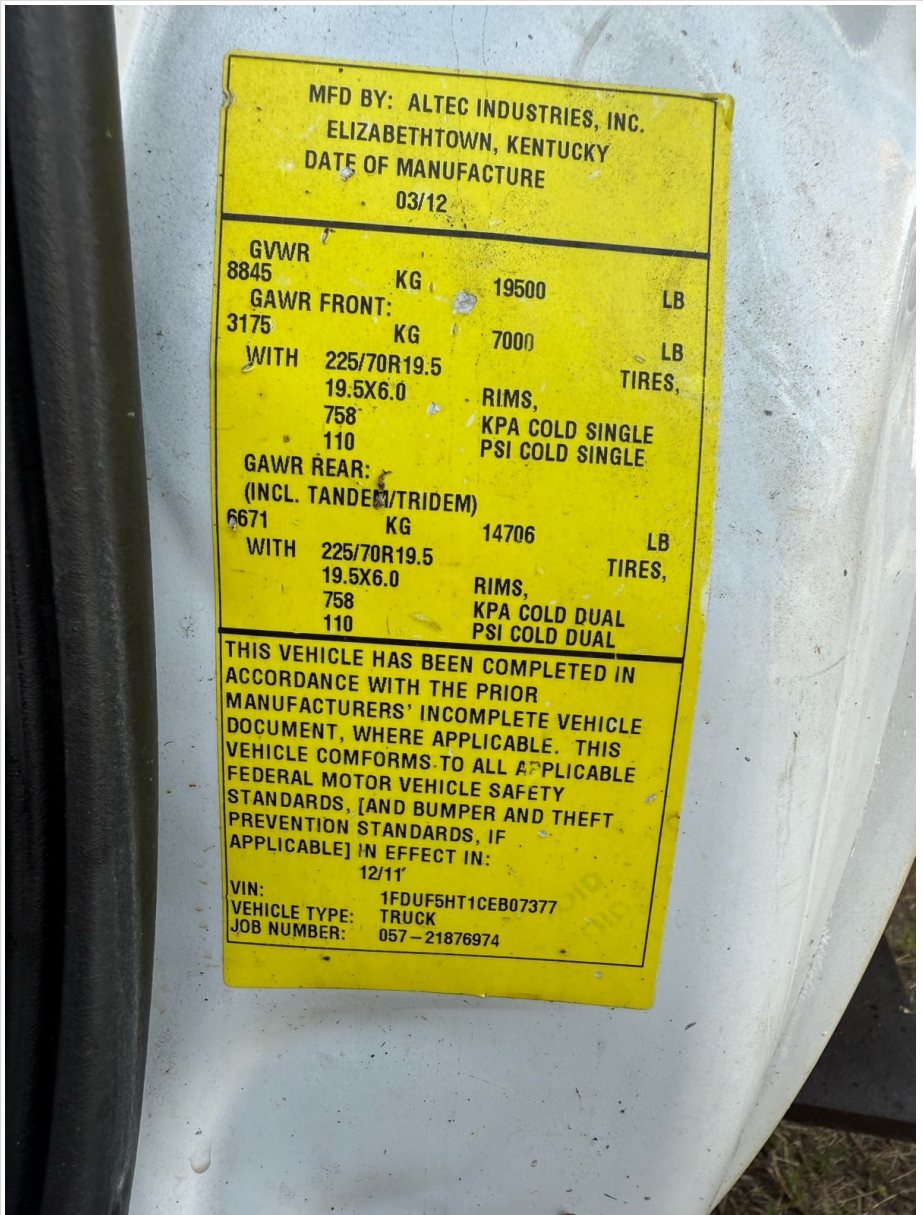


## Seller Onboarded Machine v2.0

### General Info

B&B Stock Number	A9811433																									
Category	Bucket Truck																									
Year	2012																									
Make	Ford																									
Model	F550																									
Serial Number / VIN	1FDUF5HT1CEB07377																									
Serial Number Plate / VIN Sticker	 <p>MFD BY: ALTEC INDUSTRIES, INC. ELIZABETHTOWN, KENTUCKY DATE OF MANUFACTURE 03/12</p> <table><tr><td>GVWR</td><td>8845</td><td>KG</td><td>19500</td><td>LB</td></tr><tr><td>GAWR FRONT:</td><td>3175</td><td>KG</td><td>7000</td><td>LB</td></tr><tr><td>WITH</td><td>225/70R19.5 19.5X6.0 758 110</td><td></td><td>RIMS, KPA COLD SINGLE PSI COLD SINGLE</td><td>TIRES,</td></tr><tr><td>GAWR REAR:</td><td>6671</td><td>KG</td><td>14706</td><td>LB</td></tr><tr><td>(INCL. TANDEM/TRIDEM)</td><td>WITH 225/70R19.5 19.5X6.0 758 110</td><td></td><td>RIMS, KPA COLD DUAL PSI COLD DUAL</td><td>TIRES,</td></tr></table> <p>THIS VEHICLE HAS BEEN COMPLETED IN ACCORDANCE WITH THE PRIOR MANUFACTURERS' INCOMPLETE VEHICLE DOCUMENT, WHERE APPLICABLE. THIS VEHICLE COMFORMS TO ALL APPLICABLE FEDERAL MOTOR VEHICLE SAFETY STANDARDS, [AND BUMPER AND THEFT PREVENTION STANDARDS, IF APPLICABLE] IN EFFECT IN: 12/11</p> <p>VIN: 1FDUF5HT1CEB07377 VEHICLE TYPE: TRUCK JOB NUMBER: 057-21876974</p>	GVWR	8845	KG	19500	LB	GAWR FRONT:	3175	KG	7000	LB	WITH	225/70R19.5 19.5X6.0 758 110		RIMS, KPA COLD SINGLE PSI COLD SINGLE	TIRES,	GAWR REAR:	6671	KG	14706	LB	(INCL. TANDEM/TRIDEM)	WITH 225/70R19.5 19.5X6.0 758 110		RIMS, KPA COLD DUAL PSI COLD DUAL	TIRES,
GVWR	8845	KG	19500	LB																						
GAWR FRONT:	3175	KG	7000	LB																						
WITH	225/70R19.5 19.5X6.0 758 110		RIMS, KPA COLD SINGLE PSI COLD SINGLE	TIRES,																						
GAWR REAR:	6671	KG	14706	LB																						
(INCL. TANDEM/TRIDEM)	WITH 225/70R19.5 19.5X6.0 758 110		RIMS, KPA COLD DUAL PSI COLD DUAL	TIRES,																						
	03-03-2025 12:14 PM																									
Hour Meter or Odometer Reading	226,897																									

## Seller Onboarded Machine v2.0

Hour Meter or Odometer Photo



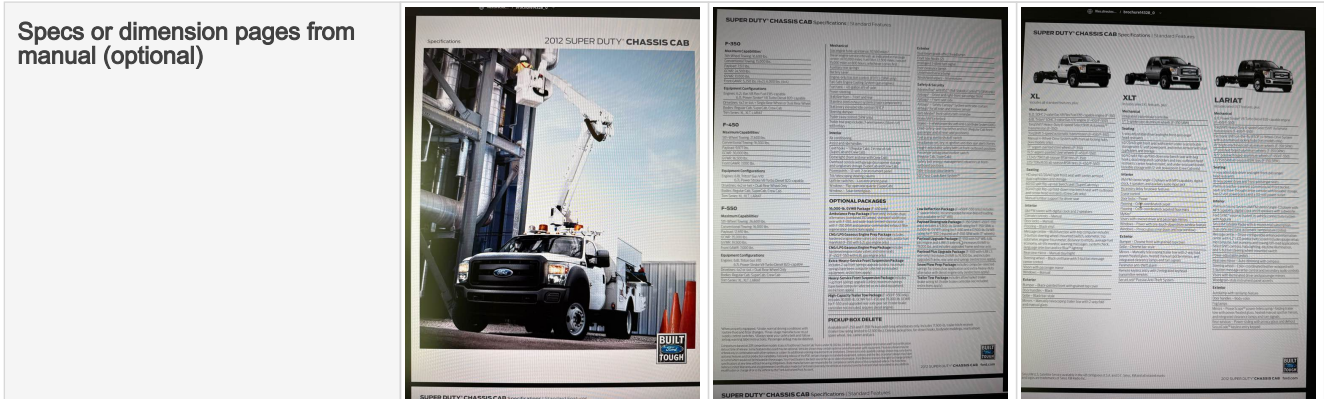
02-27-2025 05:54 PM

## Dimensions

Overall Length (ft and inches)	232.4 inches
Overall Width (ft and inches)	96 inches
Overall Height (ft and inches)	7 ft
Wheel Base (ft and inches) - ON HIGHWAY MACHINES	141.8 inches
Operational Weight (lbs)	19500



## Seller Onboarded Machine v2.0



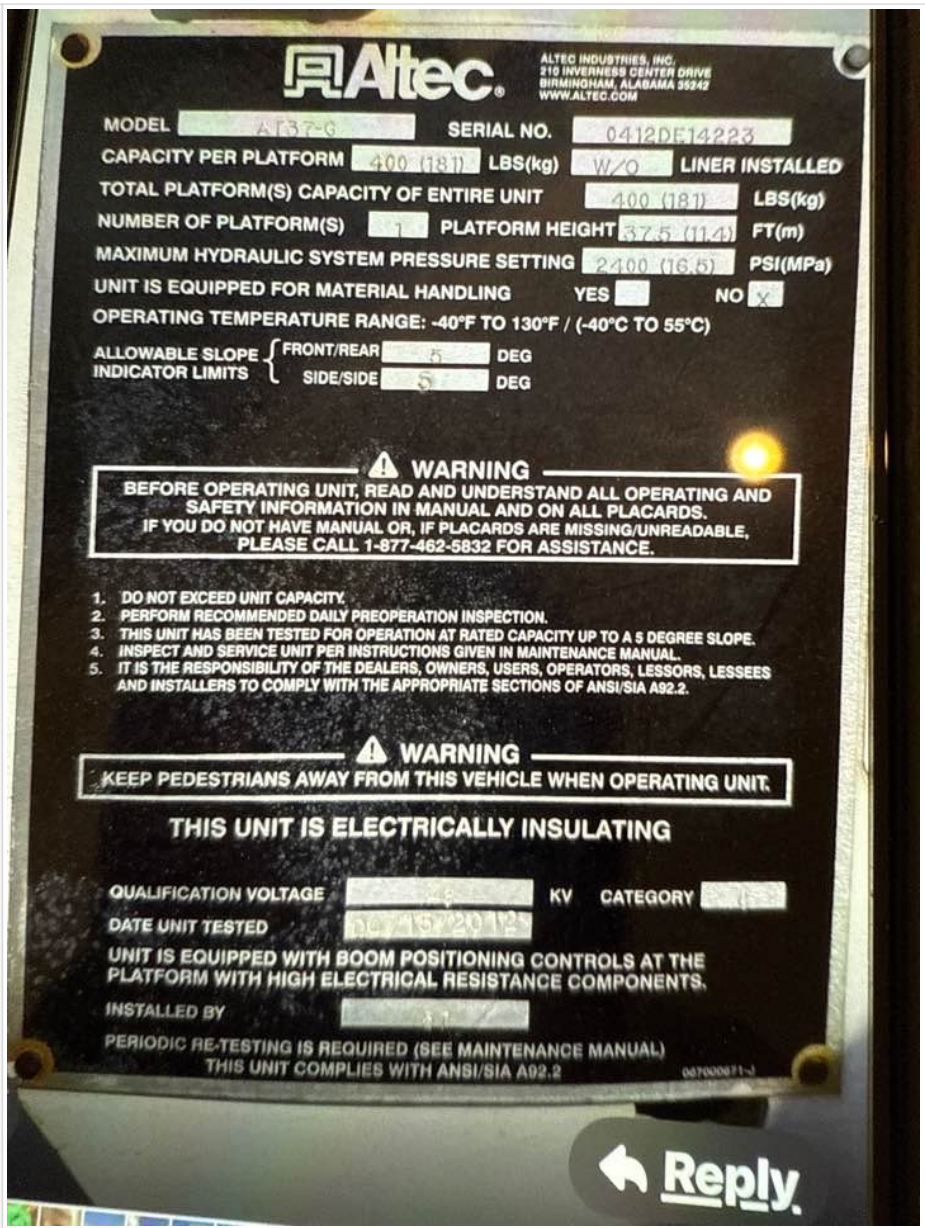
## All On-Highway Trucks

Is this vehicle titled?	Yes
Cab Type	Regular / Day Cab
Seat Type	Fixed
Drive Type	4X4
Transmission	Automatic
Fuel Type	Diesel
PTO	Yes
Air Brakes	No
A/C	Yes
Heat	Yes
Radio	Yes
Rear Camera	No
Cruise Control	Yes
Over Drive	No
All of the above are fully functional	Yes

## Bucket Truck

Lift Make/Model	Altec AT37G
Max Lift Height	37.5 ft
Max Lift Capacity	400 lbs

## Seller Onboarded Machine v2.0

Lift SN Plate	 <p><b>Altec</b> ALTEC INDUSTRIES, INC. 210 INVERNESS CENTER DRIVE BIRMINGHAM, ALABAMA 35242 WWW.ALTEC.COM</p> <p>MODEL <u>AT37-G</u> SERIAL NO. <u>0412DE14223</u></p> <p>CAPACITY PER PLATFORM <u>400 (181)</u> LBS(kg) <u>W/O</u> LINER INSTALLED</p> <p>TOTAL PLATFORM(S) CAPACITY OF ENTIRE UNIT <u>400 (181)</u> LBS(kg)</p> <p>NUMBER OF PLATFORM(S) <u>1</u> PLATFORM HEIGHT <u>37.5 (11.4)</u> FT(m)</p> <p>MAXIMUM HYDRAULIC SYSTEM PRESSURE SETTING <u>2400 (16.5)</u> PSI(MPa)</p> <p>UNIT IS EQUIPPED FOR MATERIAL HANDLING YES <input type="checkbox"/> NO <input checked="" type="checkbox"/></p> <p>OPERATING TEMPERATURE RANGE: -40°F TO 130°F / (-40°C TO 55°C)</p> <p>ALLOWABLE SLOPE { FRONT/REAR <u>5</u> DEG INDICATOR LIMITS { SIDE/SIDE <u>5</u> DEG</p> <p><b>WARNING</b> BEFORE OPERATING UNIT, READ AND UNDERSTAND ALL OPERATING AND SAFETY INFORMATION IN MANUAL AND ON ALL PLACARDS. IF YOU DO NOT HAVE MANUAL OR, IF PLACARDS ARE MISSING/UNREADABLE, PLEASE CALL 1-877-462-5832 FOR ASSISTANCE.</p> <ol style="list-style-type: none"> <li>DO NOT EXCEED UNIT CAPACITY.</li> <li>PERFORM RECOMMENDED DAILY PREOPERATION INSPECTION.</li> <li>THIS UNIT HAS BEEN TESTED FOR OPERATION AT RATED CAPACITY UP TO A 5 DEGREE SLOPE.</li> <li>INSPECT AND SERVICE UNIT PER INSTRUCTIONS GIVEN IN MAINTENANCE MANUAL.</li> <li>IT IS THE RESPONSIBILITY OF THE DEALERS, OWNERS, USERS, OPERATORS, LESSORS, LESSEES AND INSTALLERS TO COMPLY WITH THE APPROPRIATE SECTIONS OF ANSI/SIA A92.2.</li> </ol> <p><b>WARNING</b> KEEP PEDESTRIANS AWAY FROM THIS VEHICLE WHEN OPERATING UNIT.</p> <p><b>THIS UNIT IS ELECTRICALLY INSULATING</b></p> <p>QUALIFICATION VOLTAGE <u>24</u> KV CATEGORY <u>1</u></p> <p>DATE UNIT TESTED <u>02/15/2012</u></p> <p>UNIT IS EQUIPPED WITH BOOM POSITIONING CONTROLS AT THE PLATFORM WITH HIGH ELECTRICAL RESISTANCE COMPONENTS.</p> <p>INSTALLED BY <u>312</u></p> <p>PERIODIC RE-TESTING IS REQUIRED (SEE MAINTENANCE MANUAL) THIS UNIT COMPLIES WITH ANSI/SIA A92.2</p> <p><b>Reply</b></p>
Date of Last Periodic / Annual Inspection	2/27/2025
Work Basket	Yes
Outriggers / Stabilizers	Yes
Additional Notes	Altec sn# 0412DE14223

## Other Features & Attachments

OMM (Operator & Maintenance Manual)	Yes
Other Features & Attachments	N/a

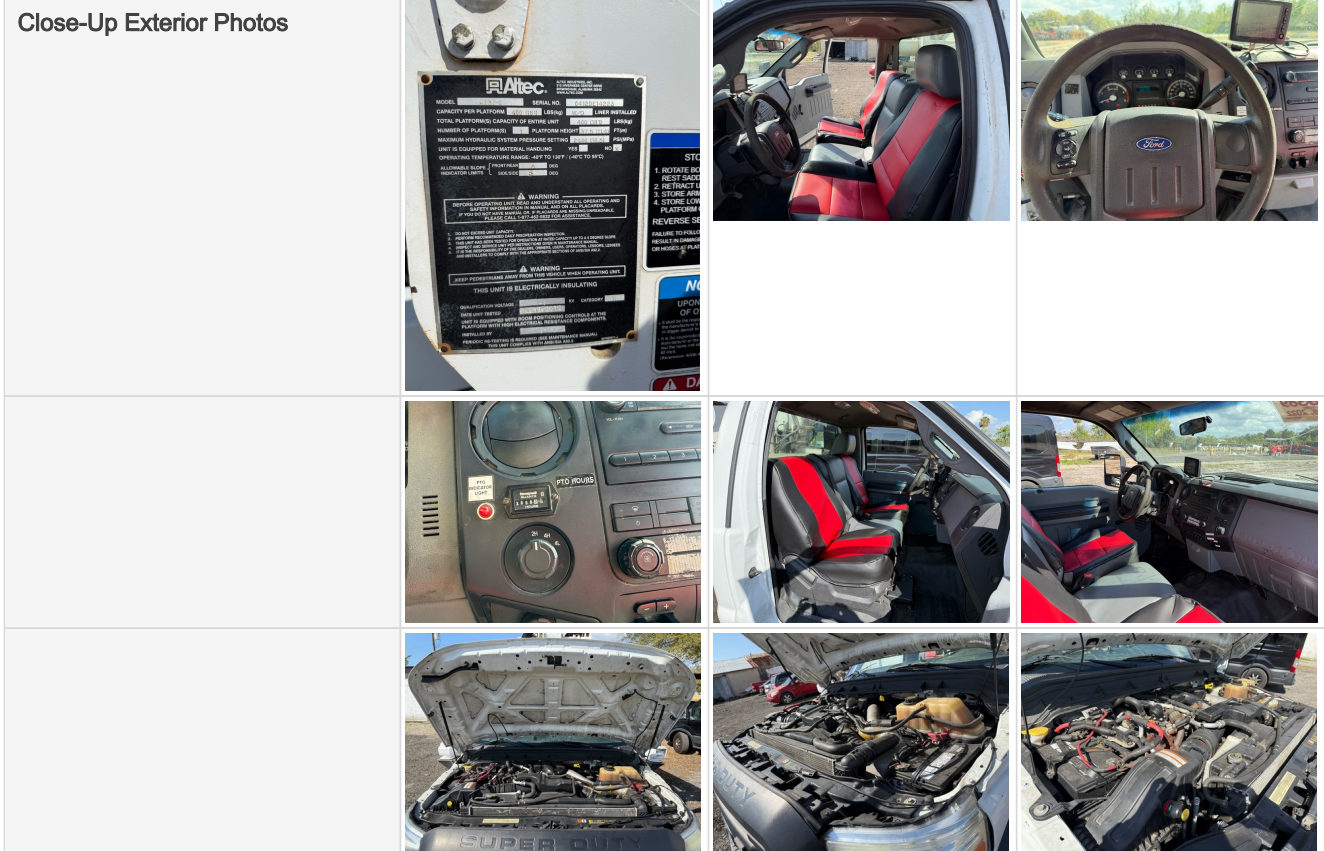
## Full Machine Photos



## Seller Onboarded Machine v2.0



## General Appearance



## Seller Onboarded Machine v2.0

			
			
			
Exterior Comments	Exterior is in good overall condition. All doors and panels open and close as expected. There is a slight dent in front left hood, but does not impair normal opening and closing of front truck hood.		

## Control Station

Control Station			
Control Station Overall Comments	All safety features operable. Cab is clean with new seat covers on both driver and passenger.		

## Engine



## Seller Onboarded Machine v2.0

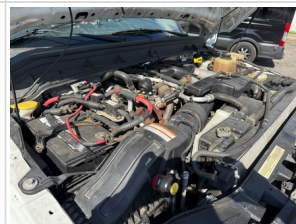
Engine Data Plate



Engine Manufacturer

Ford diesel

Engine Compartment




## Seller Onboarded Machine v2.0

Engine Overall Comments	Engine turns over smoothly and easily. Runs quiet and smooth. Lube, oil, and filter performed and is in good shape — see and hear video of engine performance. Has two new batteries.
-------------------------	---------------------------------------------------------------------------------------------------------------------------------------------------------------------------------------

## Drivetrain Components

Drivetrain and Underbody Photos		
Drivetrain and Underbody Comments	Clean and dry , fully functional with no apparent issues	

## Hydraulics

Hydraulic Pump/Fittings/Hoses/Cylinders/Pins		
Hydraulic System Comments	Pump is clean and dry, no leakages or apparent issues	

## Chassis

Chassis Photos			
			
Comments	Machine frame and stamp in good shape with no apparent issues		

## Attachments

Attachment Photos			
-------------------	-------------------------------------------------------------------------------------	--------------------------------------------------------------------------------------	---------------------------------------------------------------------------------------



## Seller Onboarded Machine v2.0

	
<b>Attachment Comments</b>	Machine comes with one bucket, fully functional both vertically and horizontally — see Video

## Functionality Assessment

<b>Is this machine fully operable?</b>	Yes
<b>Video - Operational or 360</b>	<a href="#">Click to Download</a>
<b>What's great about this machine</b>	<p>Truck has been revised and refreshed so that it is 100% operational ready for immediate field work.</p> <p>Altec Bucket &amp; Boom are field ready with new hydraulic fluids, valves checked and all functions tested positively (see Video). Boom extends both vertically and horizontally to its limits.</p> <p>Has 2 new batteries, 2 new brake pads, 2 new brake discs, lube/oil &amp; filter, and new leather front seat covers.</p> <p>Despite its mileage, truck is in excellent condition, and has many years of productive work in it.</p>
<b>What needs work</b>	No work is needed. Truck, boom and bucket have been revised and are 100% operational and immediately field ready.