

RFP #16012-3806
REQUEST FOR PROPOSALS
FOR ELECTRICAL SERVICE PROVIDER FOR THE
RICHLAND CREEK RESERVOIR, ETOWAH RIVER RAW WATER INTAKE,
WATER TREATMENT PLANT, AND RESERVOIR PUMP STATION
Paulding County, Georgia
Richland Creek Water Supply Program

ADDENDUM #1

April 5, 2016

This addendum is being issued to provide clarification, additional information, and answer questions received associated with the RFP. This addendum is also posted on the County's official website: www.paulding.gov

Additional Information

PDF Copies of the electrical site plans and single line diagrams showing the utility transformers for the WTP and River Pump Station sites are provided with this addendum. A set of the CAD version of the site plans are available by contacting Lori Cirami at Lcirami@brwncauld.com 770.673.3621. Note that the feed to the River Pump Station is shown coming from Old Alabama Road, however it will be acceptable to feed from another direction (such as the airport).

Questions and Responses

1. **Question:** Can we receive in CAD format the site plan for the two locations?

Answer: Yes, Issued with this Addendum are PDF drawings of the electrical site plans for the two site showing the locations of the planned utility transformers. CAD files will be provided if desired – contact Lori Cirami (information above) and she will transfer you the files in CAD format.

2. **Question:** Will there be generators? If so, will you please provide all specs available?

Answer: There will be no generators on the project. We would like to have redundant transformers at the WTP and Reservoir Pump Station since uninterrupted power will be critical. The River Pump Station can be taken offline for up top a week and will not require a redundant transformer or generator.

3. **Question:** Will there be a UPS?

Answer: There will be UPS systems related to the SCADA system, but not for the overall power feed.

4. **Question:** Who will control the throw over scheme for the transformers?

Answer: The Power Utility will be responsible for the transition between the redundant transformers.

5. **Question:** What is the time line for you temporary needs and what kind of demand should we expect?

Answer: Temporary Power will need to be established by mid August 2016. Anticipated demand is identified in the RFP (up to 12 200 A panels with loading as stated). It is anticipated that service will be single phase 240/120V power.

6. **Question:** Please provide details on roadway and parking lot lighting. Is there a design already in place?

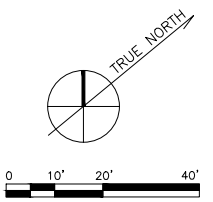
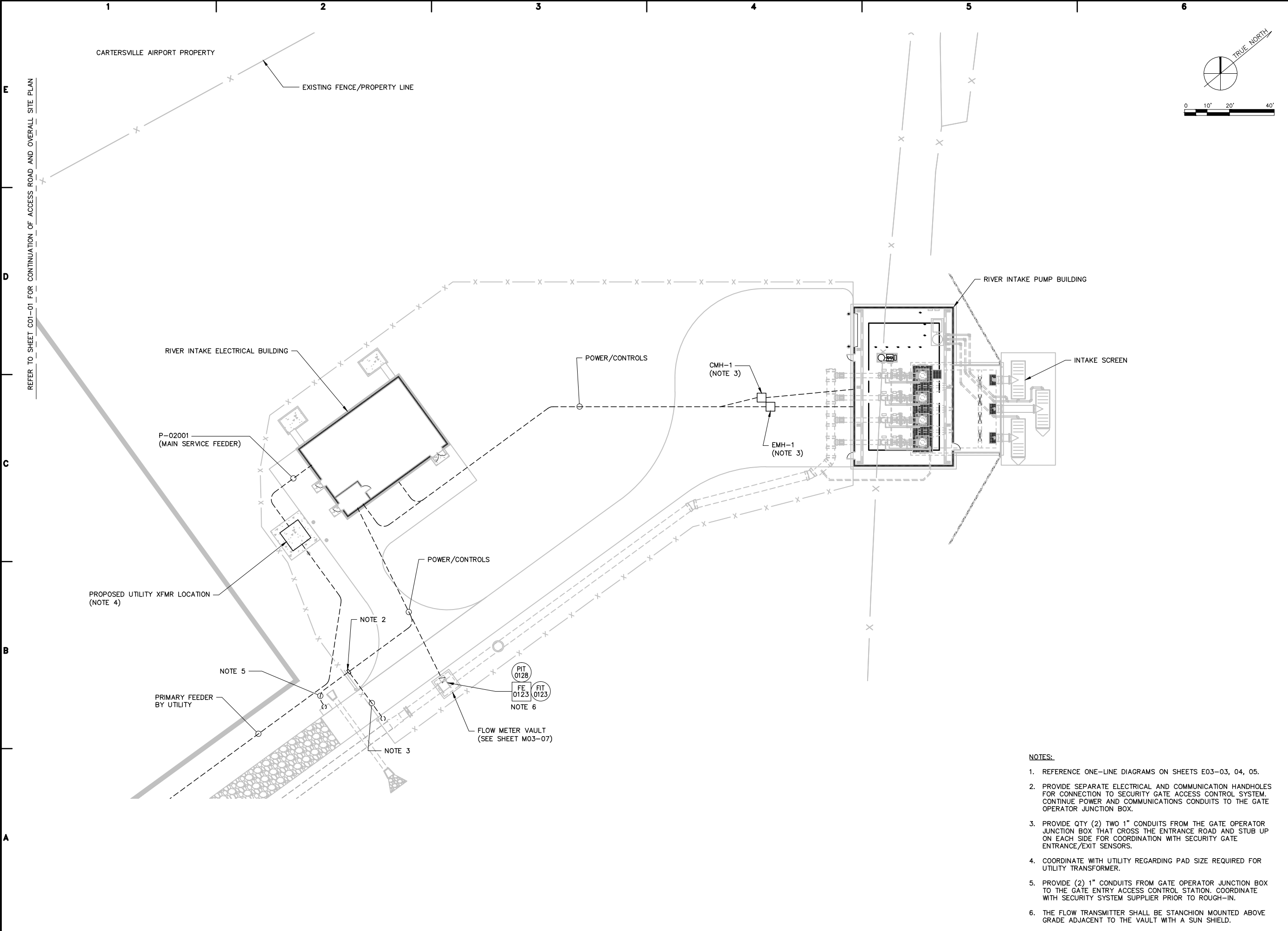
Answer: The electrical contractors will provide roadway and parking lot lighting as part of the WTP design. PDFs of roadway lighting are attached.

No other changes to the previously issued RFP have been made with this addendum. Deadline for submission remains to be no later than 2:00 P.M. on Friday, April 29, 2016.

PAULDING COUNTY BOARD OF COMMISSIONERS

Tabitha Pollard
Finance Director
Paulding County Department of Finance

User: KURELLA - Spec: AUS - NCS: MOD - File: C:\PROJ\GA064015.0004 - PAULDING DESIGN SHEETS\WATER_SUPPLY\ELECTRICAL\E02-01.DWG - Scale: 1:1 - Saved: 03/22/2016 11:27 AM - Plot Date: Kurella, Keffi: 3/31/2016 17:42 - Layout: 479



CONSULTANTS

SEALS

FOR GMP DEVELOPMENT

NOT RELEASED FOR CONSTRUCTION

PAULDING COUNTY, GEORGIA

RICHLAND CREEK WATER SUPPLY PROJECT

INTAKES AND WTP

NO.	DATE	ISSUED FOR	BY

COPYRIGHT: ARCADIS U.S., INC. 2016

DATE: FEBRUARY 2016

PROJECT NO.: GA064015.0004

FILE NAME: E02-01.dwg

DESIGNED BY: K. KURELLA

DRAWN BY: V. NGUYEN

CHECKED BY: I. GONZALEZ

SHEET TITLE

ELECTRICAL

SITE PLAN - RIVER INTAKE

SCALE: 1" = 20'-0"

E02-01

SHEET 479 OF 575

- NOTES:**
- REFERENCE ONE-LINE DIAGRAMS ON SHEETS E03-03, 04, 05.
 - PROVIDE SEPARATE ELECTRICAL AND COMMUNICATION HANDHOLES FOR CONNECTION TO SECURITY GATE ACCESS CONTROL SYSTEM. CONTINUE POWER AND COMMUNICATIONS CONDUITS TO THE GATE OPERATOR JUNCTION BOX.
 - PROVIDE QTY (2) TWO 1" CONDUITS FROM THE GATE OPERATOR JUNCTION BOX THAT CROSS THE ENTRANCE ROAD AND STUB UP ON EACH SIDE FOR COORDINATION WITH SECURITY GATE ENTRANCE/EXIT SENSORS.
 - COORDINATE WITH UTILITY REGARDING PAD SIZE REQUIRED FOR UTILITY TRANSFORMER.
 - PROVIDE (2) 1" CONDUITS FROM GATE OPERATOR JUNCTION BOX TO THE GATE ENTRY ACCESS CONTROL STATION. COORDINATE WITH SECURITY SYSTEM SUPPLIER PRIOR TO ROUGH-IN.
 - THE FLOW TRANSMITTER SHALL BE STANCHION MOUNTED ABOVE GRADE ADJACENT TO THE VAULT WITH A SUN SHIELD.

NO.	DATE	ISSUED FOR	BY

COPYRIGHT: ARCADIS U.S., INC. 2016

DATE: FEBRUARY 2016

PROJECT NO.: GA064015.0004

FILE NAME: E02-02.dwg

DESIGNED BY: K. KURELLA

DRAWN BY: V. NGUYEN

CHECKED BY: I. GONZALEZ

SHEET TITLE

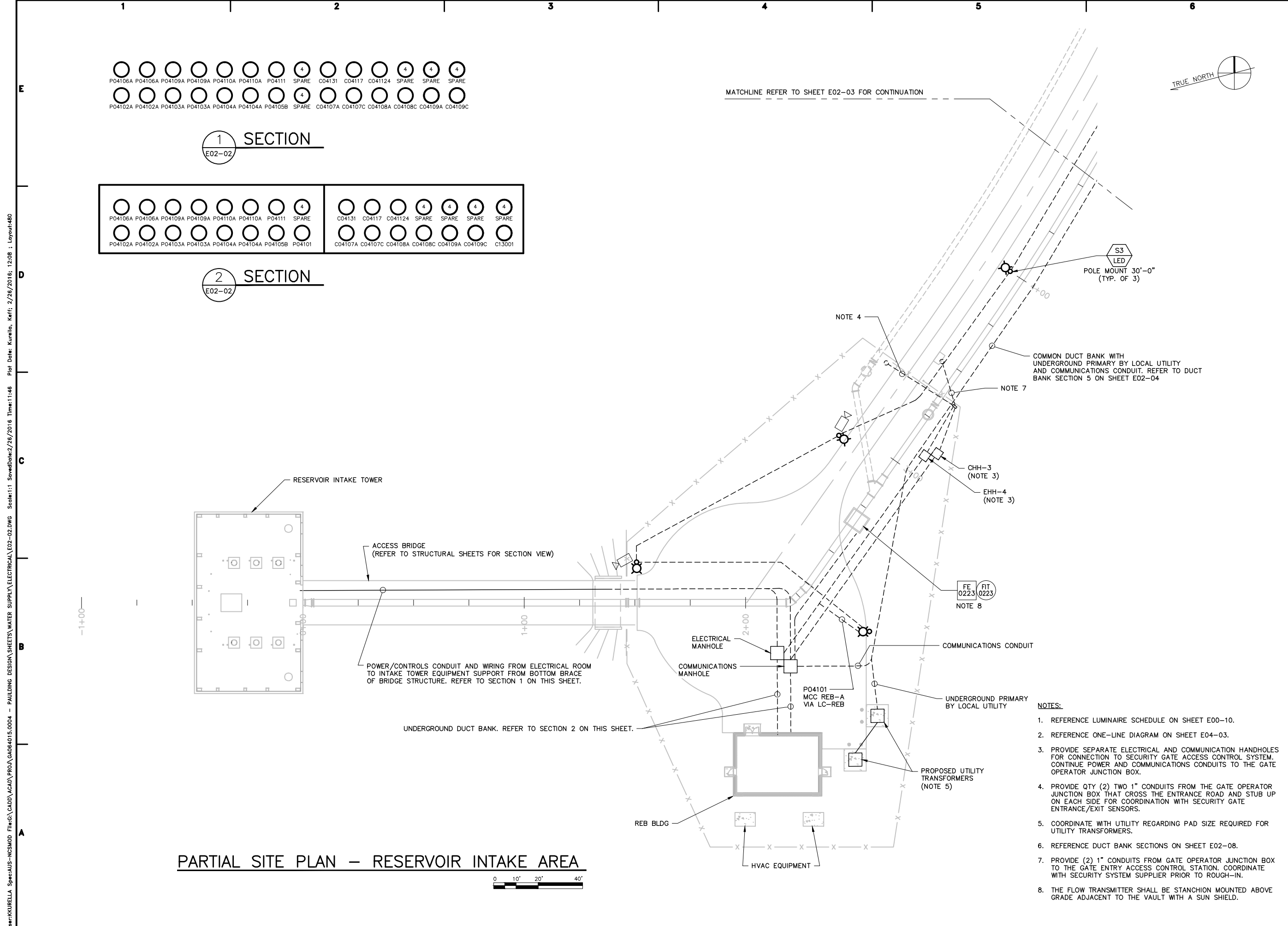
ELECTRICAL

**SITE PLAN -
RESERVOIR INTAKE
TOWER**

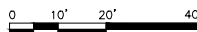
SCALE: 1" = 20'-0"

E02-02

SHEET 480 OF 575



PARTIAL SITE PLAN - RESERVOIR INTAKE AREA



- NOTES:**
- REFERENCE LUMINAIRE SCHEDULE ON SHEET E00-10.
 - REFERENCE ONE-LINE DIAGRAM ON SHEET E04-03.
 - PROVIDE SEPARATE ELECTRICAL AND COMMUNICATION HANDHOLES FOR CONNECTION TO SECURITY GATE ACCESS CONTROL SYSTEM. CONTINUE POWER AND COMMUNICATIONS CONDUITS TO THE GATE OPERATOR JUNCTION BOX.
 - PROVIDE QTY (2) TWO 1" CONDUITS FROM THE GATE OPERATOR JUNCTION BOX THAT CROSS THE ENTRANCE ROAD AND STUB UP ON EACH SIDE FOR COORDINATION WITH SECURITY GATE ENTRANCE/EXIT SENSORS.
 - COORDINATE WITH UTILITY REGARDING PAD SIZE REQUIRED FOR UTILITY TRANSFORMERS.
 - REFERENCE DUCT BANK SECTIONS ON SHEET E02-08.
 - PROVIDE (2) 1" CONDUITS FROM GATE OPERATOR JUNCTION BOX TO THE GATE ENTRY ACCESS CONTROL STATION. COORDINATE WITH SECURITY SYSTEM SUPPLIER PRIOR TO ROUGH-IN.
 - THE FLOW TRANSMITTER SHALL BE STANCHION MOUNTED ABOVE GRADE ADJACENT TO THE VAULT WITH A SUN SHIELD.

User: KURELLA, Spec: AUS-NCSSMOD, File: C:\CADD\ACAD\PROJ\GA064015.0004 - PAULDING DESIGN SHEETS\WATER SUPPLY\ELECTRICAL\E02-02.DWG Scale: 1:1 Saved Date: 2/26/2016 Time: 11:46 Plot Date: Kurella, Keff: 2/26/2016; 12:08 - Layout: 480

User: KURELLA, Spec: AUS - NCSMOD, File: C:\CADD\ACAD\PROJ\GA064015.0004 - PAULDING DESIGN SHEETS\WATER_SUPPLY\ELECTRICAL\E02-03.DWG, Scale: 1:1, Saved Date: 2/26/2016, Time: 11:46, Plot Date: Kurella, Keff, 2/26/2016, 12:10, Layout: 481

CONSULTANTS

SEALS

FOR GMP DEVELOPMENT

NOT RELEASED FOR CONSTRUCTION

PAULDING COUNTY, GEORGIA

RICHLAND CREEK WATER SUPPLY PROJECT

INTAKES AND WTP

NO.	DATE	ISSUED FOR	BY

COPYRIGHT: ARCADIS U.S., INC. 2016

DATE: FEBRUARY 2016

PROJECT NO.: GA064015.0004

FILE NAME: E02-03.dwg

DESIGNED BY: K. KURELLA

DRAWN BY: V. NGUYEN

CHECKED BY: I. GONZALEZ

SHEET TITLE

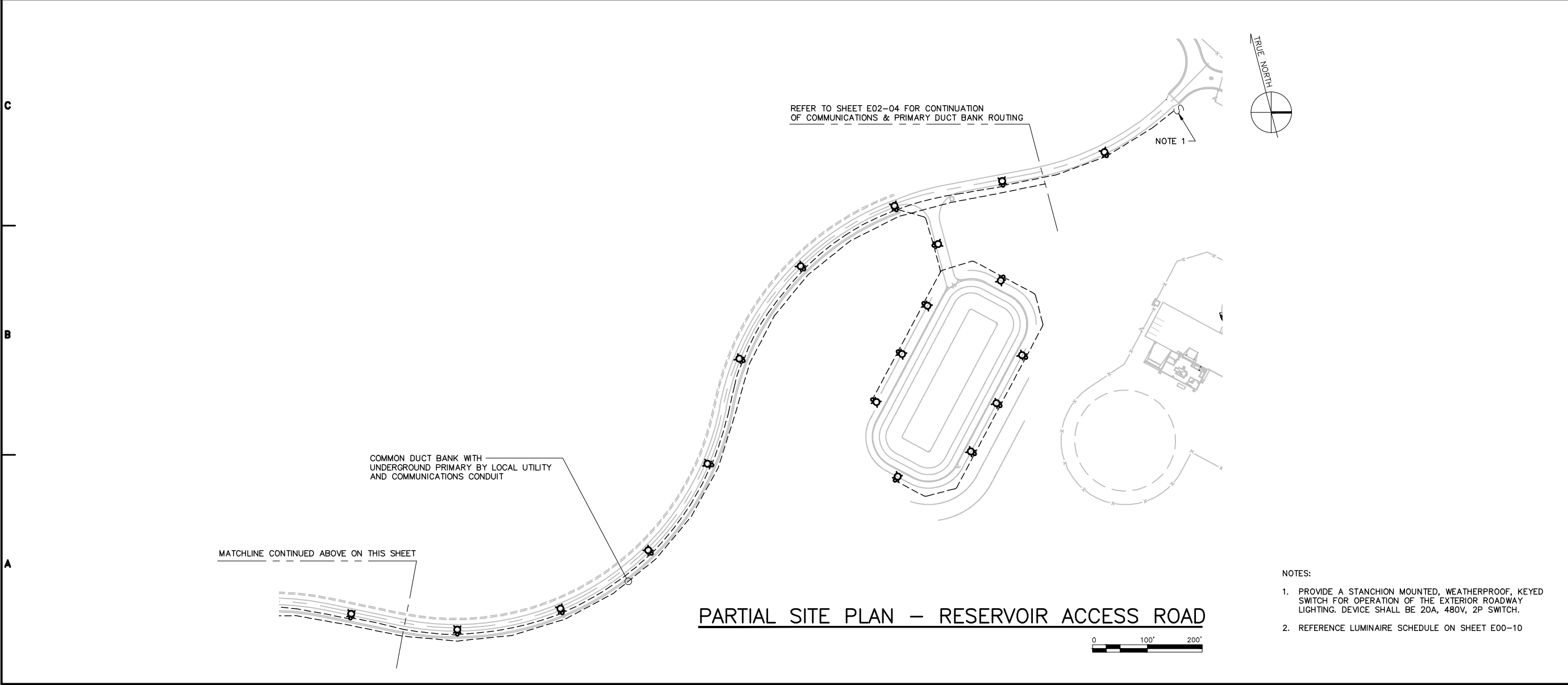
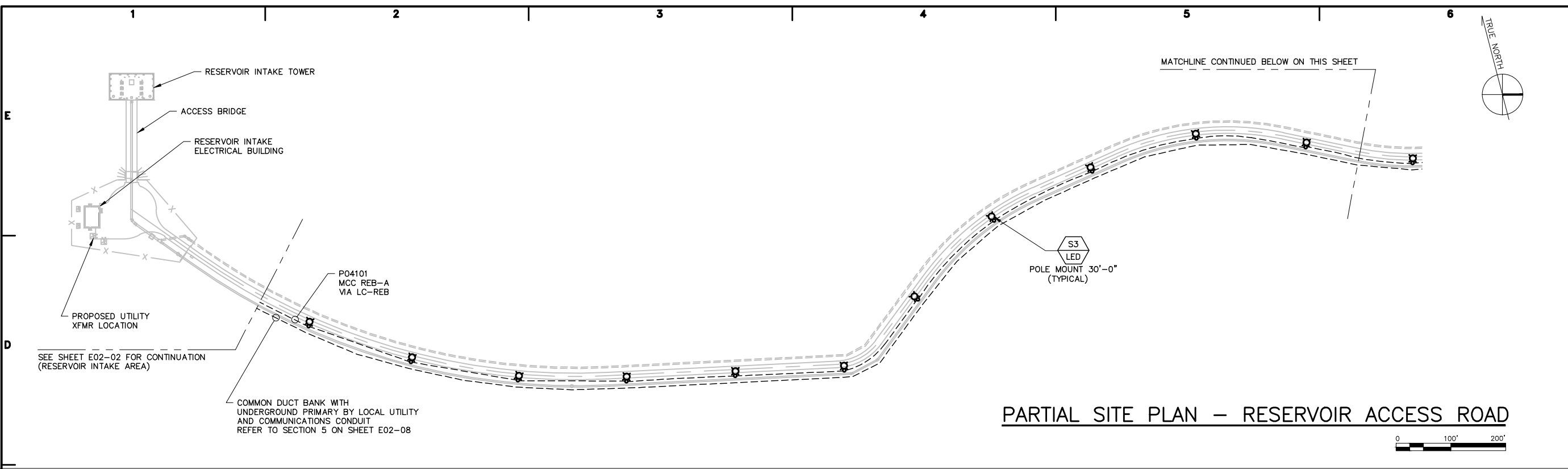
ELECTRICAL

SITE PLAN - RESERVOIR INTAKE TOWER ACCESS ROAD

SCALE: 1" = 100'-0"

E02-03

SHEET 481 OF 575



- NOTES:
1. PROVIDE A STANCHION MOUNTED, WEATHERPROOF, KEYED SWITCH FOR OPERATION OF THE EXTERIOR ROADWAY LIGHTING. DEVICE SHALL BE 20A, 480V, 2P SWITCH.
 2. REFERENCE LUMINAIRE SCHEDULE ON SHEET E00-10

User: KURELLA, Spec: AUS - NCSMOD, File: C:\CAD\PROJ\GA064015.0004 - PAULDING DESIGN SHEETS\WATER SUPPLY\ELECTRICAL\E02-04A.DWG, Scale: 1:1, Saved Date: 2/26/2016, Time: 11:46, Plot Date: Kurella, Ver: 1, 2/26/2016, 12:16, Layout: 482

CONSULTANTS

SEALS

FOR GMP DEVELOPMENT

NOT RELEASED FOR CONSTRUCTION

PAULDING COUNTY, GEORGIA

RICHLAND CREEK WATER SUPPLY PROJECT

INTAKES AND WTP

NO.	DATE	ISSUED FOR	BY

COPYRIGHT: ARCADIS U.S., INC. 2016

DATE: FEBRUARY 2016

PROJECT NO.: GA064015.0004

FILE NAME: E02-04A.dwg

DESIGNED BY: K. KURELLA

DRAWN BY: V. NGUYEN

CHECKED BY: I. GONZALEZ

SHEET TITLE

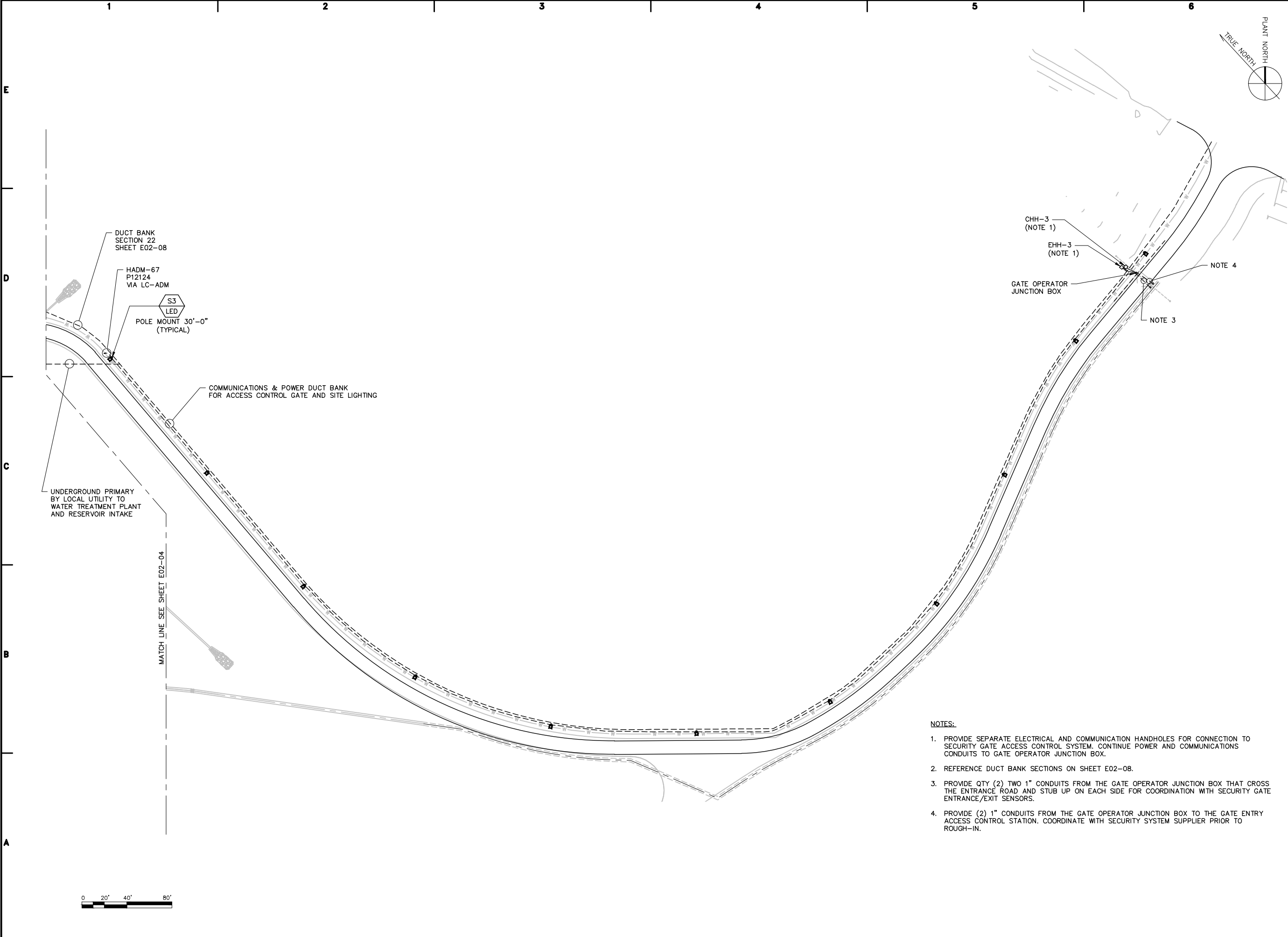
ELECTRICAL

SITE PLAN - TREATMENT PLANT ACCESS ROAD

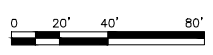
SCALE: 1" = 40'-0"

E02-04A

SHEET 482 OF 575



- NOTES:**
1. PROVIDE SEPARATE ELECTRICAL AND COMMUNICATION HANDHOLES FOR CONNECTION TO SECURITY GATE ACCESS CONTROL SYSTEM. CONTINUE POWER AND COMMUNICATIONS CONDUITS TO GATE OPERATOR JUNCTION BOX.
 2. REFERENCE DUCT BANK SECTIONS ON SHEET E02-08.
 3. PROVIDE QTY (2) TWO 1" CONDUITS FROM THE GATE OPERATOR JUNCTION BOX THAT CROSS THE ENTRANCE ROAD AND STUB UP ON EACH SIDE FOR COORDINATION WITH SECURITY GATE ENTRANCE/EXIT SENSORS.
 4. PROVIDE (2) 1" CONDUITS FROM THE GATE OPERATOR JUNCTION BOX TO THE GATE ENTRY ACCESS CONTROL STATION. COORDINATE WITH SECURITY SYSTEM SUPPLIER PRIOR TO ROUGH-IN.



CONSULTANTS

SEALS

FOR GMP DEVELOPMENT
NOT RELEASED FOR CONSTRUCTION

PAULDING COUNTY, GEORGIA
RICHLAND CREEK WATER SUPPLY PROJECT
INTAKES AND WTP

NO.	DATE	ISSUED FOR	BY

COPYRIGHT: ARCADIS U.S., INC. 2016

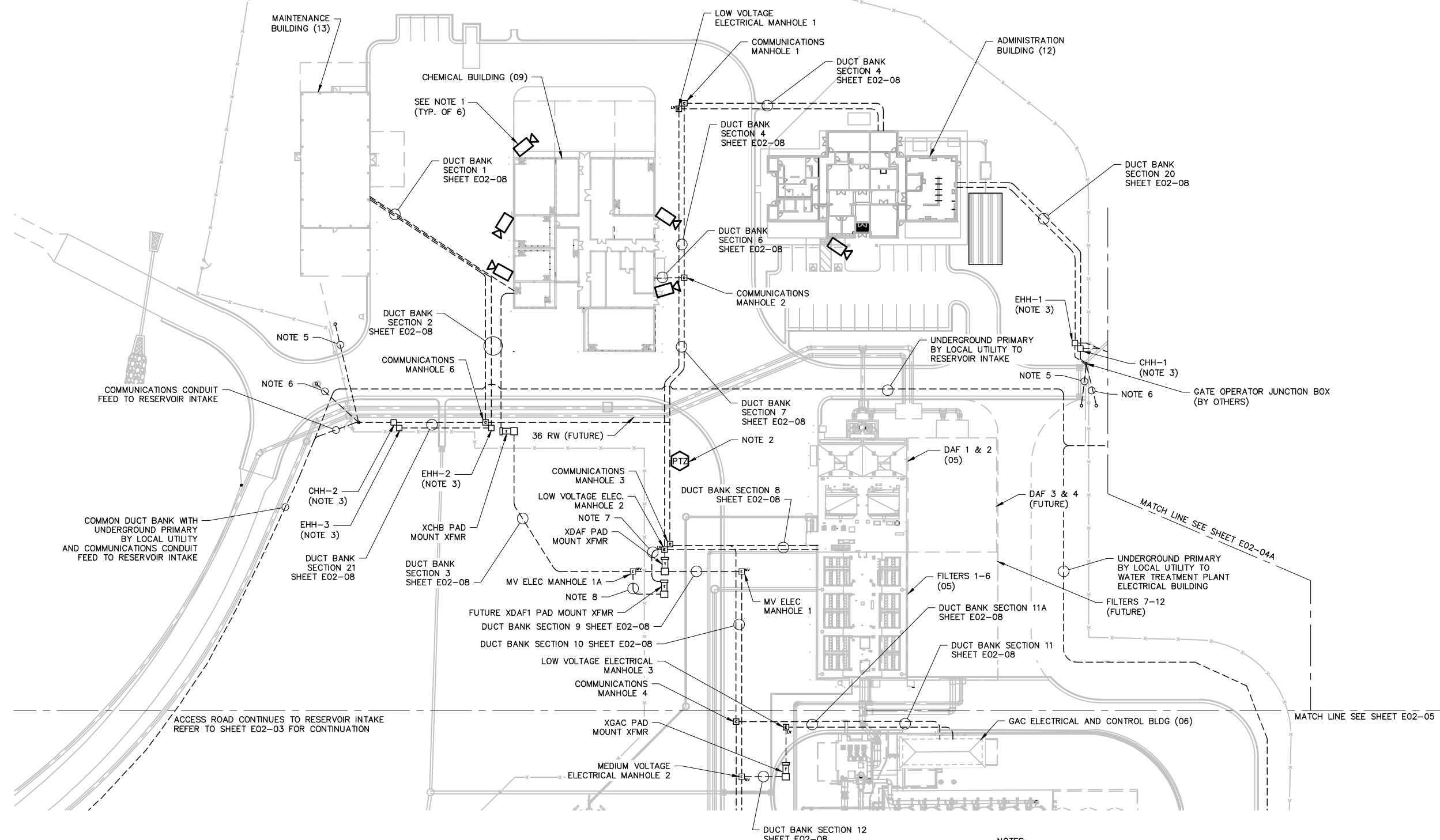
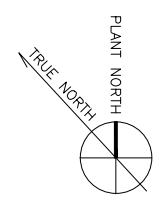
DATE: FEBRUARY 2016
 PROJECT NO.: GA064015.0004
 FILE NAME: E02-04.dwg
 DESIGNED BY: K. KURELLA
 DRAWN BY: V. NGUYEN
 CHECKED BY: I. GONZALEZ

SHEET TITLE

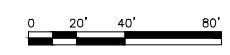
ELECTRICAL
SITE PLAN - WATER TREATMENT PLANT (1 OF 2)

SCALE: 1" = 40'-0"

E02-04
 SHEET 483 OF 575



- NOTES:**
1. IP WEATHER PROOF/VANDAL PROOF CAMERA. COORDINATE BUILDING MOUNTING DETAILS WITH SECURITY SYSTEM SUPPLIER PRIOR TO ROUGH-IN.
 2. MOUNT PTZ CAMERA ON LOCAL LIGHT POLE. REFER TO SHEET E02-06 FOR LOCATION.
 3. PROVIDE SEPARATE ELECTRICAL AND COMMUNICATION HANDHOLES FOR CONNECTION TO SECURITY GATE ACCESS CONTROL SYSTEM. CONTINUE POWER AND COMMUNICATIONS CONDUITS TO THE GATE OPERATOR JUNCTION BOX.
 4. REFERENCE DUCT BANK SECTIONS ON SHEET E02-08.
 5. PROVIDE QTY (2) TWO 1" CONDUITS FROM THE GATE OPERATOR JUNCTION BOX THAT CROSS THE ENTRANCE ROAD AND STUB UP ON EACH SIDE FOR COORDINATION WITH SECURITY GATE ENTRANCE/EXIT SENSORS.
 6. PROVIDE (2) 1" CONDUITS FROM GATE OPERATOR JUNCTION BOX TO THE GATE ENTRY ACCESS CONTROL STATION. COORDINATE WITH SECURITY SYSTEM SUPPLIER PRIOR TO ROUGH-IN.
 7. PROVIDE (10) 4" CONDUITS FROM LOW VOLTAGE ELECTRICAL MANHOLE 2 TO THE FUTURE LOCATION OF PAD MOUNTED TRANSFORMER XDAF1 FOR FUTURE SERVICE TO DAF 3 AND 4. REFER TO DUCT BANK SECTION 8.
 8. PROVIDE (6) 4" CONDUITS FROM MEDIUM VOLTAGE ELECTRICAL MANHOLE 1A TO THE FUTURE LOCATION OF PAD MOUNTED TRANSFORMER XDAF1 FOR FUTURE CONNECTION OF THE TRANSFORMER INTO THE MEDIUM VOLTAGE LOOP FEED. SIMILAR PROFILE TO DUCT BANK SECTION 16.



User:KURELLA_SpecAUS-HCSMOD_Files\CADD\CADD\PROJ\GA064015.0004 - PAULDING DESIGN SHEETS\WATER_SUPPLY\ELECTRICAL\E02-04.dwg Scale:1:1 SavedDate:2/26/2016 Time:11:46 Plot Date: Kurella, Keff: 2/26/2016: 12:13 - Layout:483

User: KURELLA, Spec: AUS - NCSMOD, File: C:\CAD\ACAD\PROJ\GA064015.0004 - PAULDING DESIGN SHEETS\WATER_SUPPLY\ELECTRICAL\E02-05.DWG, Scale: 1:1, Saved: 2/26/2016 12:19:12, Plot Date: Kurella, Keff, 2/26/2016, 12:19:12, Layout: 484

CONSULTANTS

SEALS

FOR GMP DEVELOPMENT
NOT RELEASED FOR CONSTRUCTION

PAULDING COUNTY, GEORGIA
RICHLAND CREEK WATER SUPPLY PROJECT
INTAKES AND WTP

NO.	DATE	ISSUED FOR	BY

COPYRIGHT: ARCADIS U.S., INC. 2016

DATE: FEBRUARY 2016
 PROJECT NO.: GA064015.0004
 FILE NAME: E02-05.dwg
 DESIGNED BY: K. KURELLA
 DRAWN BY: V. NGUYEN
 CHECKED BY: I. GONZALEZ

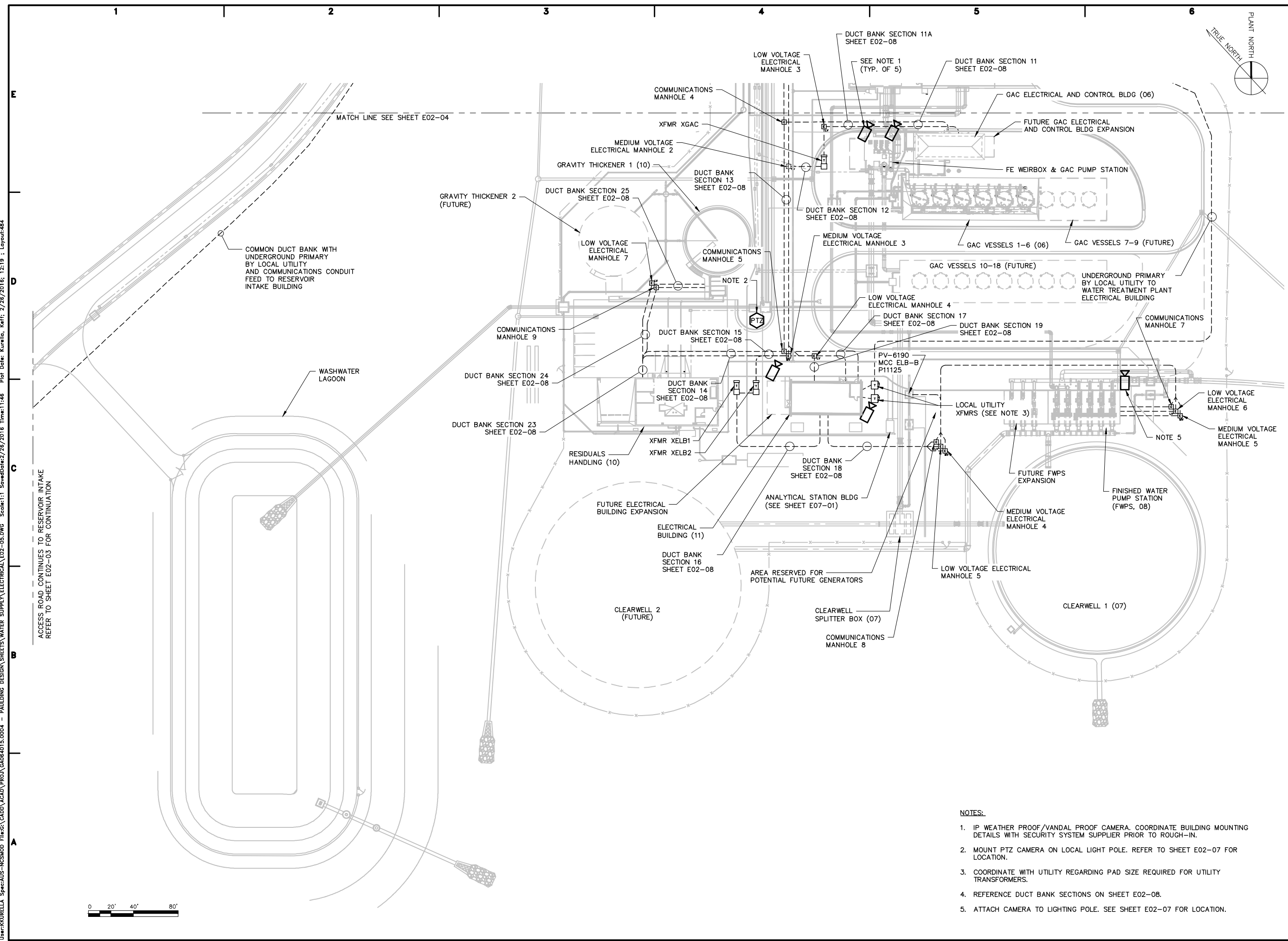
SHEET TITLE

ELECTRICAL

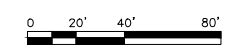
SITE PLAN - WATER TREATMENT PLANT (2 OF 2)

SCALE: 1" = 40'-0"

E02-05
 SHEET 484 OF 575



- NOTES:**
1. IP WEATHER PROOF/VANDAL PROOF CAMERA. COORDINATE BUILDING MOUNTING DETAILS WITH SECURITY SYSTEM SUPPLIER PRIOR TO ROUGH-IN.
 2. MOUNT PTZ CAMERA ON LOCAL LIGHT POLE. REFER TO SHEET E02-07 FOR LOCATION.
 3. COORDINATE WITH UTILITY REGARDING PAD SIZE REQUIRED FOR UTILITY TRANSFORMERS.
 4. REFERENCE DUCT BANK SECTIONS ON SHEET E02-08.
 5. ATTACH CAMERA TO LIGHTING POLE. SEE SHEET E02-07 FOR LOCATION.



User: KURELLA, Spec: AUS - NCSMOD, File: C:\CADD\ACAD\PROJ\GA064015.0004 - PAULDING DESIGN SHEETS\WATER_SUPPLY\ELECTRICAL\E02-06.DWG, Scale: 1:1, Saved Date: 2/26/2016, Time: 11:46, Plot Date: Kurella, Keff, 2/26/2016, 12:21, Layout: 485

CONSULTANTS

SEALS
FOR GMP DEVELOPMENT
NOT RELEASED FOR CONSTRUCTION

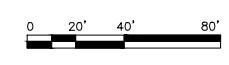
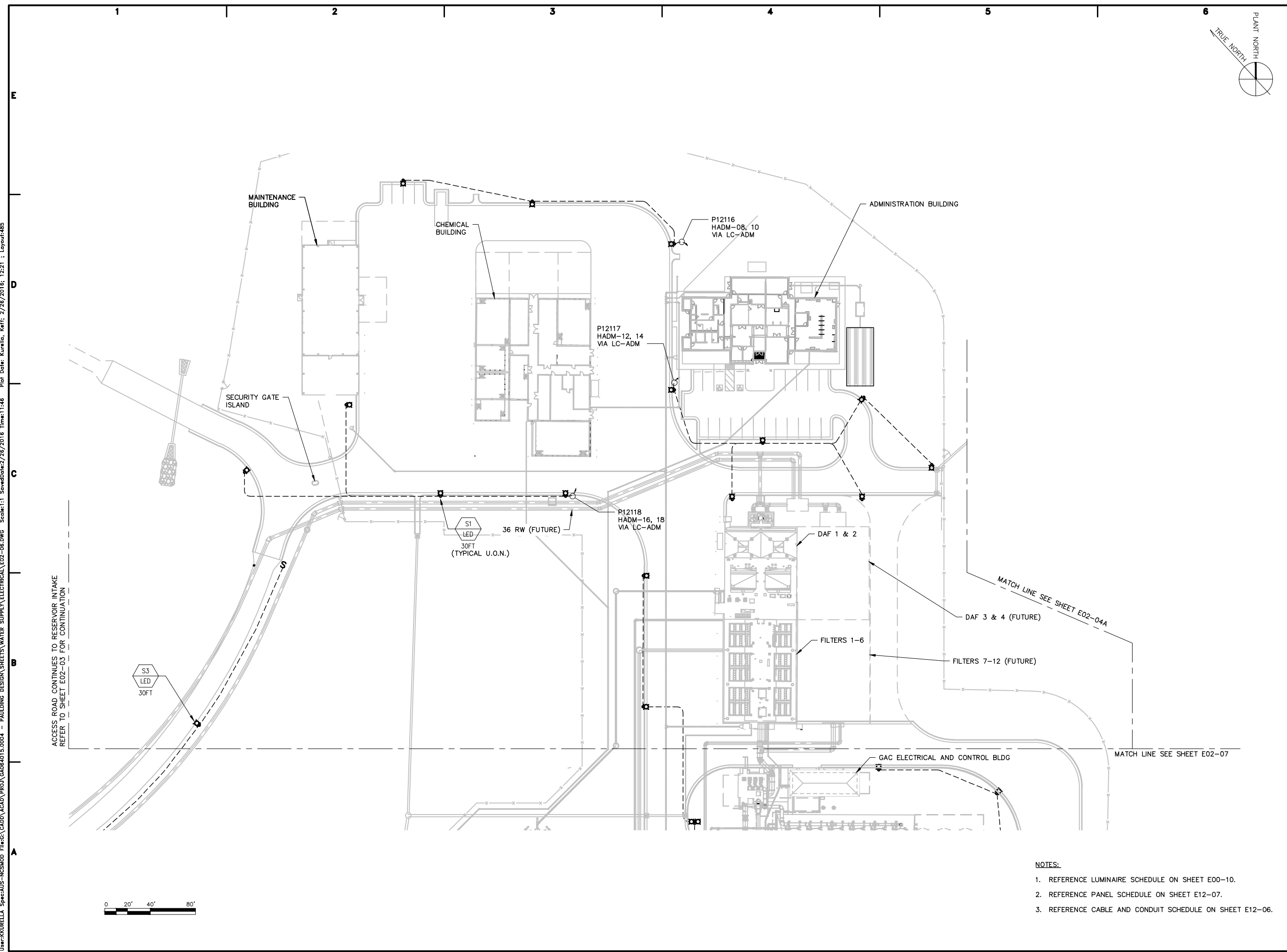
PAULDING COUNTY, GEORGIA
RICHLAND CREEK WATER SUPPLY PROJECT
INTAKES AND WTP

NO.	DATE	ISSUED FOR	BY

COPYRIGHT: ARCADIS U.S., INC. 2016
 DATE: FEBRUARY 2016
 PROJECT NO.: GA064015.0004
 FILE NAME: E02-06.dwg
 DESIGNED BY: K. KURELLA
 DRAWN BY: V. NGUYEN
 CHECKED BY: I. GONZALEZ

SHEET TITLE
ELECTRICAL
SITE LIGHTING PLAN
(1 OF 2)

SCALE: 1" = 40'-0"
E02-06
 SHEET 485 OF 575



- NOTES:**
1. REFERENCE LUMINAIRE SCHEDULE ON SHEET E00-10.
 2. REFERENCE PANEL SCHEDULE ON SHEET E12-07.
 3. REFERENCE CABLE AND CONDUIT SCHEDULE ON SHEET E12-06.

User: KURELLA, Spec: AUS-NC5MOD, File: C:\CADD\ACAD\PROJ\GA064015.0004 - PAULDING DESIGN SHEETS\WATER_SUPPLY\ELECTRICAL\E02-07.DWG, Scale: 1:1, Saved Date: 2/26/2016, Time: 11:47, Plot Date: Kurella, Keff, 2/26/2016, 12:24, Layout: 486

CONSULTANTS

SEALS
FOR GMP DEVELOPMENT
NOT RELEASED FOR CONSTRUCTION

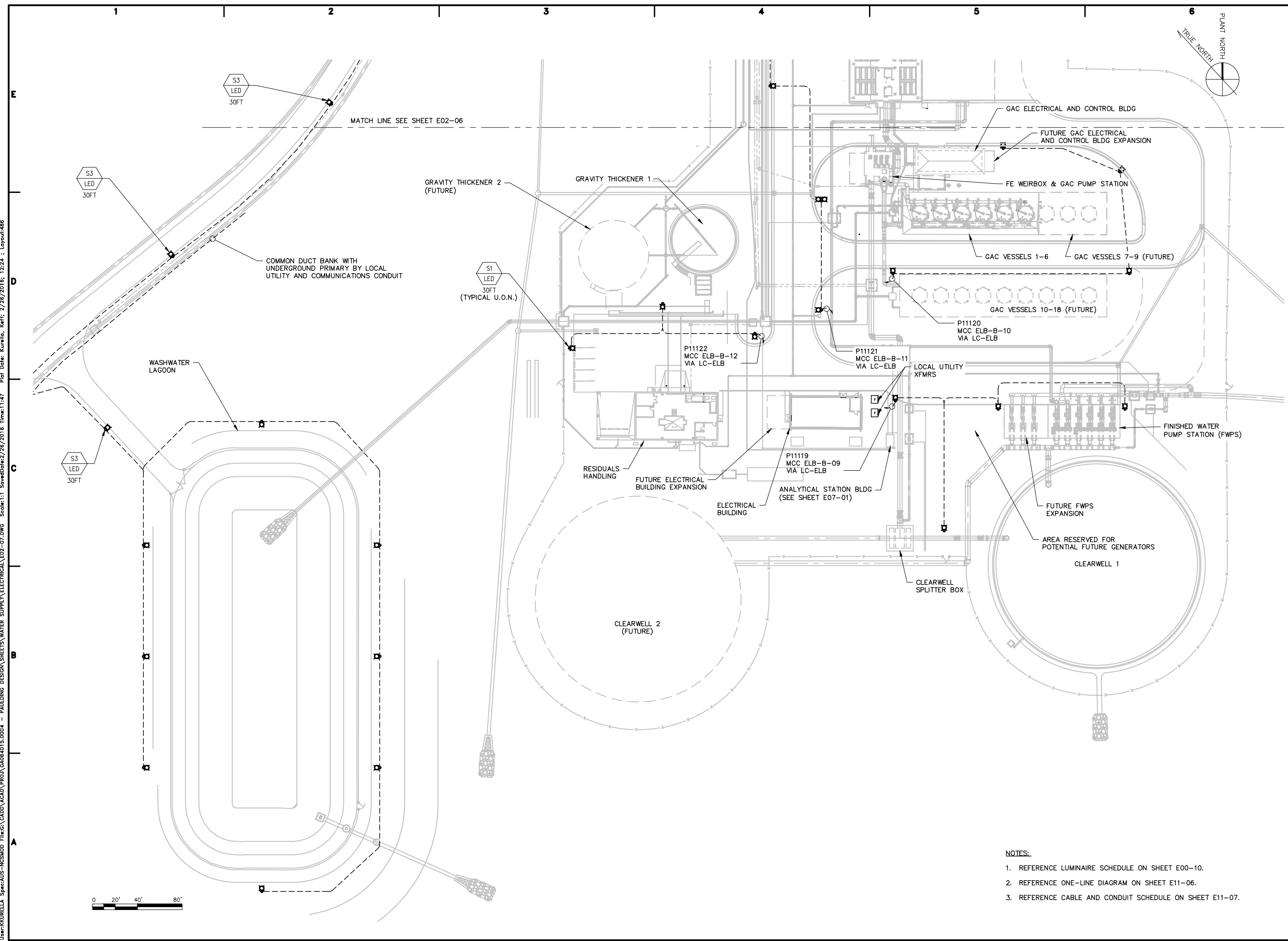
PAULDING COUNTY, GEORGIA
RICHLAND CREEK WATER SUPPLY PROJECT
INTAKES AND WTP

NO.	DATE	ISSUED FOR	BY

COPYRIGHT: ARCADIS U.S., INC. 2016
 DATE: FEBRUARY 2016
 PROJECT NO.: GA064015.0004
 FILE NAME: E02-07.dwg
 DESIGNED BY: K. KURELLA
 DRAWN BY: V. NGUYEN
 CHECKED BY: I. GONZALEZ

SHEET TITLE
ELECTRICAL
SITE LIGHTING PLAN
(2 OF 2)
 SCALE: 1" = 40'-0"

E02-07
 SHEET 486 OF 575



- NOTES:**
1. REFERENCE LUMINAIRE SCHEDULE ON SHEET E00-10.
 2. REFERENCE ONE-LINE DIAGRAM ON SHEET E11-06.
 3. REFERENCE CABLE AND CONDUIT SCHEDULE ON SHEET E11-07.

NO.	DATE	ISSUED FOR	BY

COPYRIGHT: ARCADIS U.S., INC. 2016

DATE: FEBRUARY 2016

PROJECT NO.: GA064015.0004

FILE NAME: E03-03.dwg

DESIGNED BY: K. KURELLA

DRAWN BY: V. NGUYEN

CHECKED BY: I. GONZALEZ

SHEET TITLE

ELECTRICAL

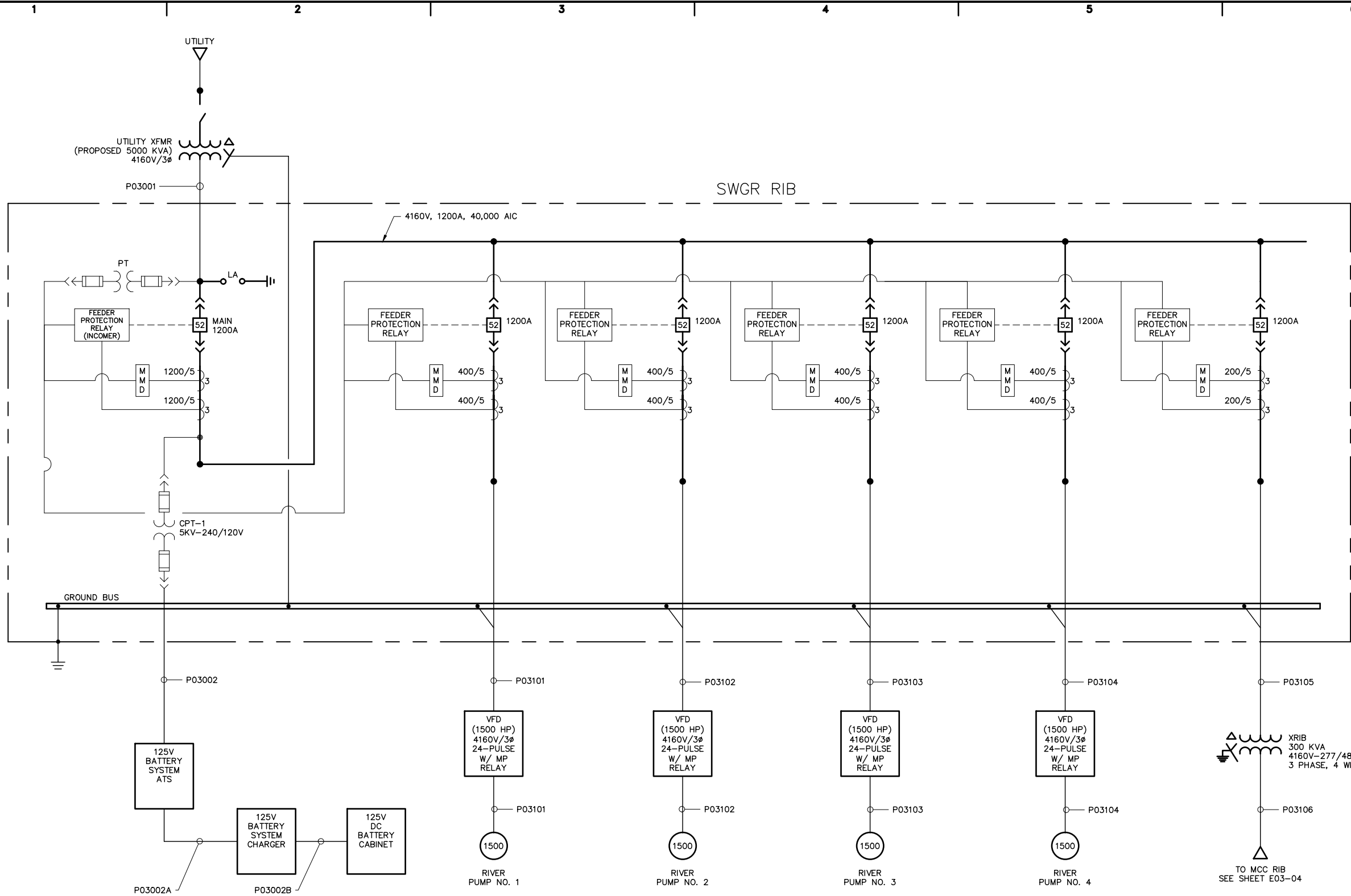
RIVER INTAKE – ONE LINE DIAGRAM (1 OF 2)

SCALE: NOT TO SCALE

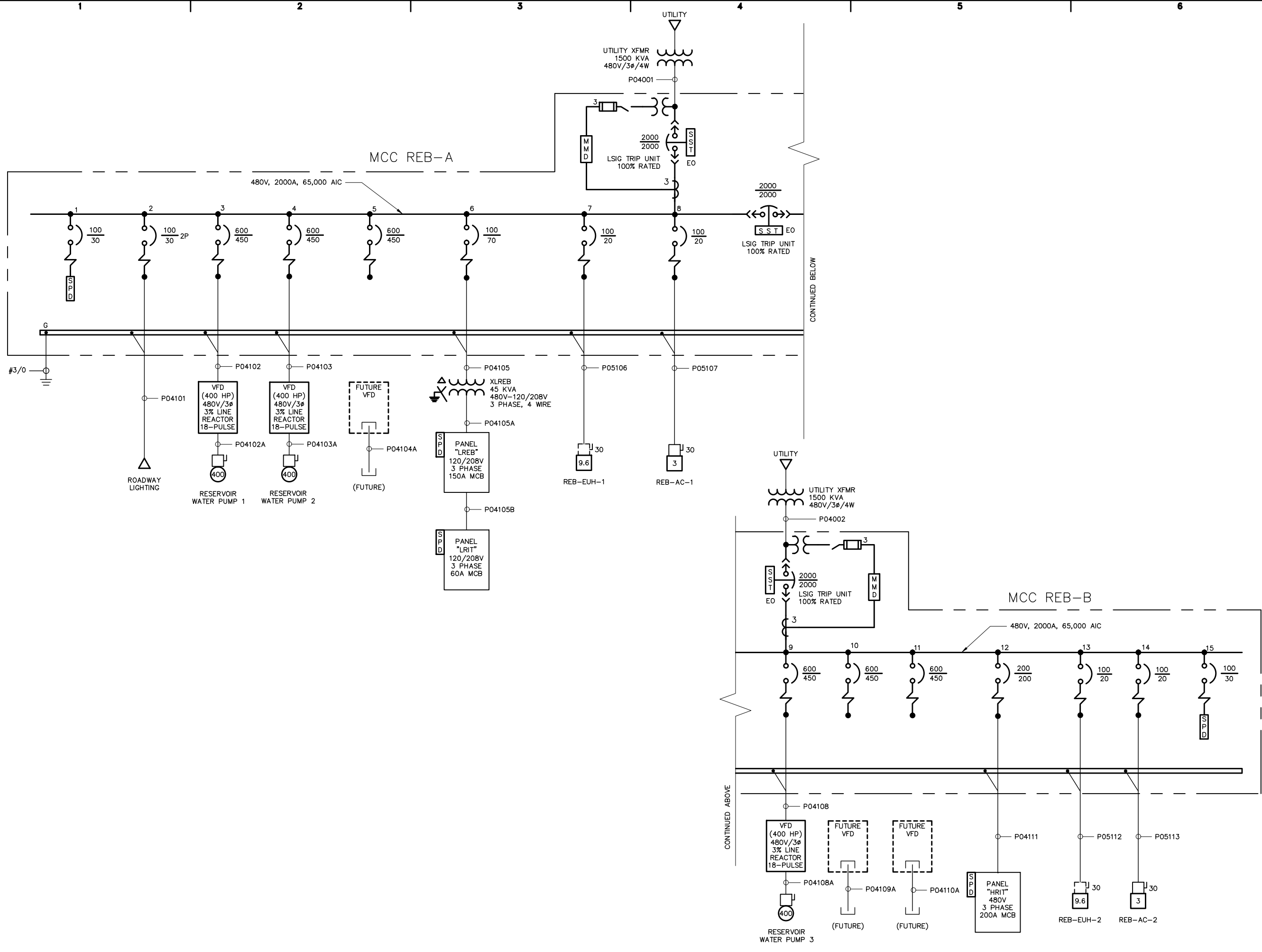
E03-03

SHEET 493 OF 575

User: KURELLA - Spec: AUS - NCS: MOD - File: \ACAD\PROJ\GA064015.0004 - PAULDING DESIGN SHEETS\WATER SUPPLY\ELECTRICAL\E03-03.DWG Scale: 1:1 Saved Date: 3/7/2016 Time: 15:53 Plot Date: Kurella, Keff: 3/7/2016: 16:07 : Layout: 493



User: KURELLA, Spec: AUS-NCSDMOD, File: C:\CADD\ACAD\PROJ\GA064015.0004 - PAULDING DESIGN SHEETS\WATER_SUPPLY\ELECTRICAL\E04-03.DWG, Scale: 1:1, Saved: 2/26/2016 11:49, Plot Date: Kurella, Keff: 2/26/2016, 12:28 - Layout: 500



CONSULTANTS

SEALS

FOR GMP DEVELOPMENT
NOT RELEASED FOR CONSTRUCTION

PAULDING COUNTY, GEORGIA
RICHLAND CREEK WATER SUPPLY PROJECT
INTAKES AND WTP

NO.	DATE	ISSUED FOR	BY

COPYRIGHT: ARCADIS U.S., INC. 2016

DATE: FEBRUARY 2016

PROJECT NO.: GA064015.0004

FILE NAME: E04-03.dwg

DESIGNED BY: K. KURELLA

DRAWN BY: V. NGUYEN

CHECKED BY: I. GONZALEZ

SHEET TITLE

ELECTRICAL

RESERVOIR INTAKE AREA- ONE LINE DIAGRAM

SCALE: NONE

User: KURELLA, Spec: AUS - NCSMOD, File: C:\CAD\ACAD\PROJ\GA064015.0004 - PAULDING DESIGN SHEETS\WATER SUPPLY\ELECTRICAL\E11-04.DWG Scale: 1:1 Saved Date: 2/26/2016 Time: 11:58 Plot Date: Kurella, Keff, 2/26/2016, 13:00 - Layout: 558

CONSULTANTS

SEALS

FOR GMP DEVELOPMENT
NOT RELEASED FOR CONSTRUCTION

PAULDING COUNTY, GEORGIA
RICHLAND CREEK WATER SUPPLY PROJECT
INTAKES AND WTP

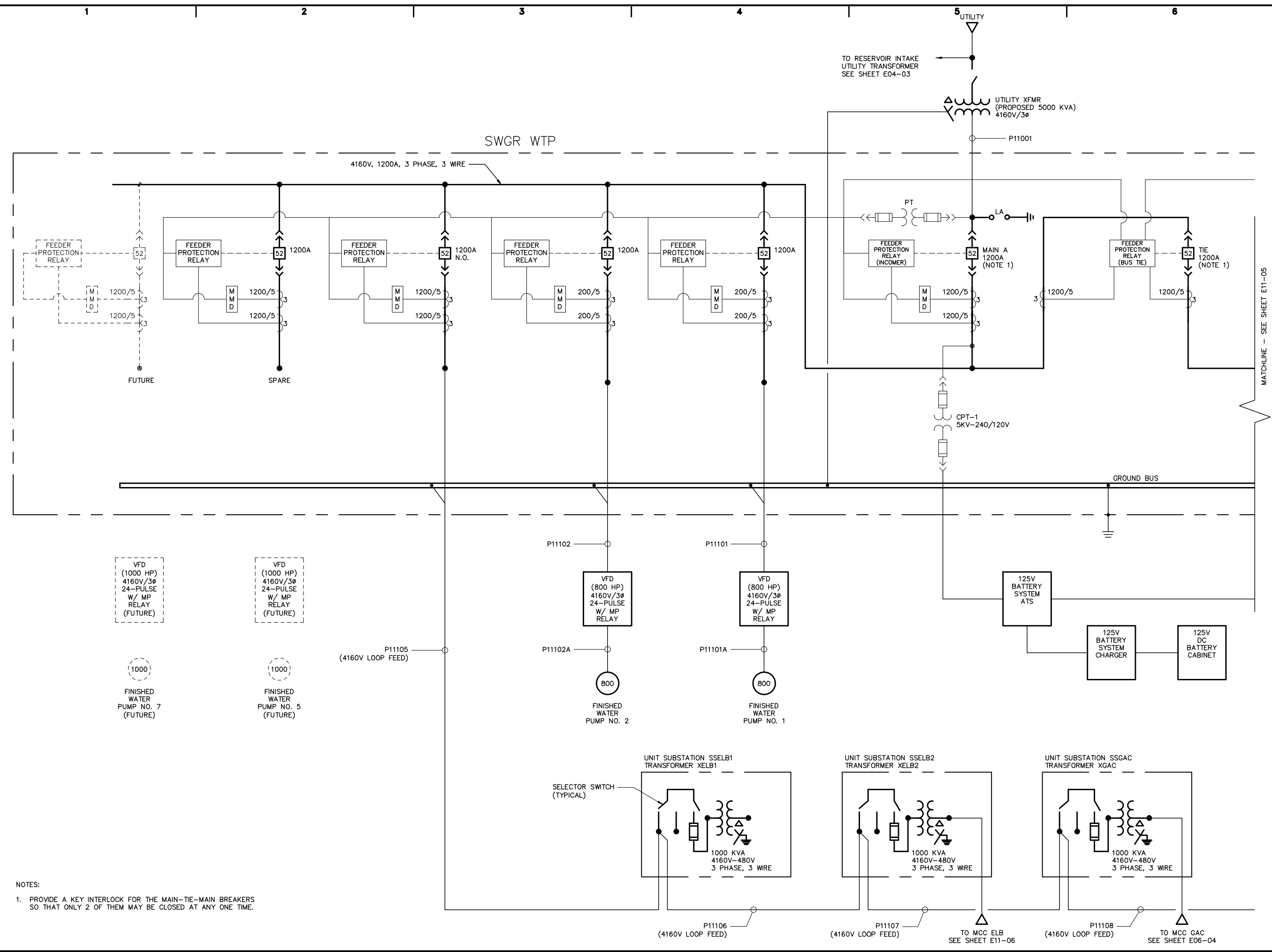
NO.	DATE	ISSUED FOR	BY

COPYRIGHT: ARCADIS U.S., INC. 2016
 DATE: FEBRUARY 2016
 PROJECT NO.: GA064015.0004
 FILE NAME: E11-04.dwg
 DESIGNED BY: K. KURELLA
 DRAWN BY: V. NGUYEN
 CHECKED BY: I. GONZALEZ

SHEET TITLE
ELECTRICAL
ELECTRICAL BUILDING - ONE LINE DIAGRAM 4160V (1 OF 2)

SCALE: NOT TO SCALE

E11-04
 SHEET 558 OF 575



NOTES:
 1. PROVIDE A KEY INTERLOCK FOR THE MAIN-TIE-MAIN BREAKERS SO THAT ONLY 2 OF THEM MAY BE CLOSED AT ANY ONE TIME.

CONSULTANTS

SEALS

FOR GMP DEVELOPMENT

**NOT RELEASED FOR
CONSTRUCTION**

**PAULDING COUNTY,
GEORGIA**

**RICHLAND CREEK
WATER SUPPLY PROJECT**

INTAKES AND WTP

NO.	DATE	ISSUED FOR	BY

COPYRIGHT: ARCADIS U.S., INC.
2016

DATE: FEBRUARY 2016

PROJECT NO.: GA064015.0004

FILE NAME: E11-05.dwg

DESIGNED BY: K. KURELLA

DRAWN BY: V. NGUYEN

CHECKED BY: I. GONZALEZ

SHEET TITLE

ELECTRICAL

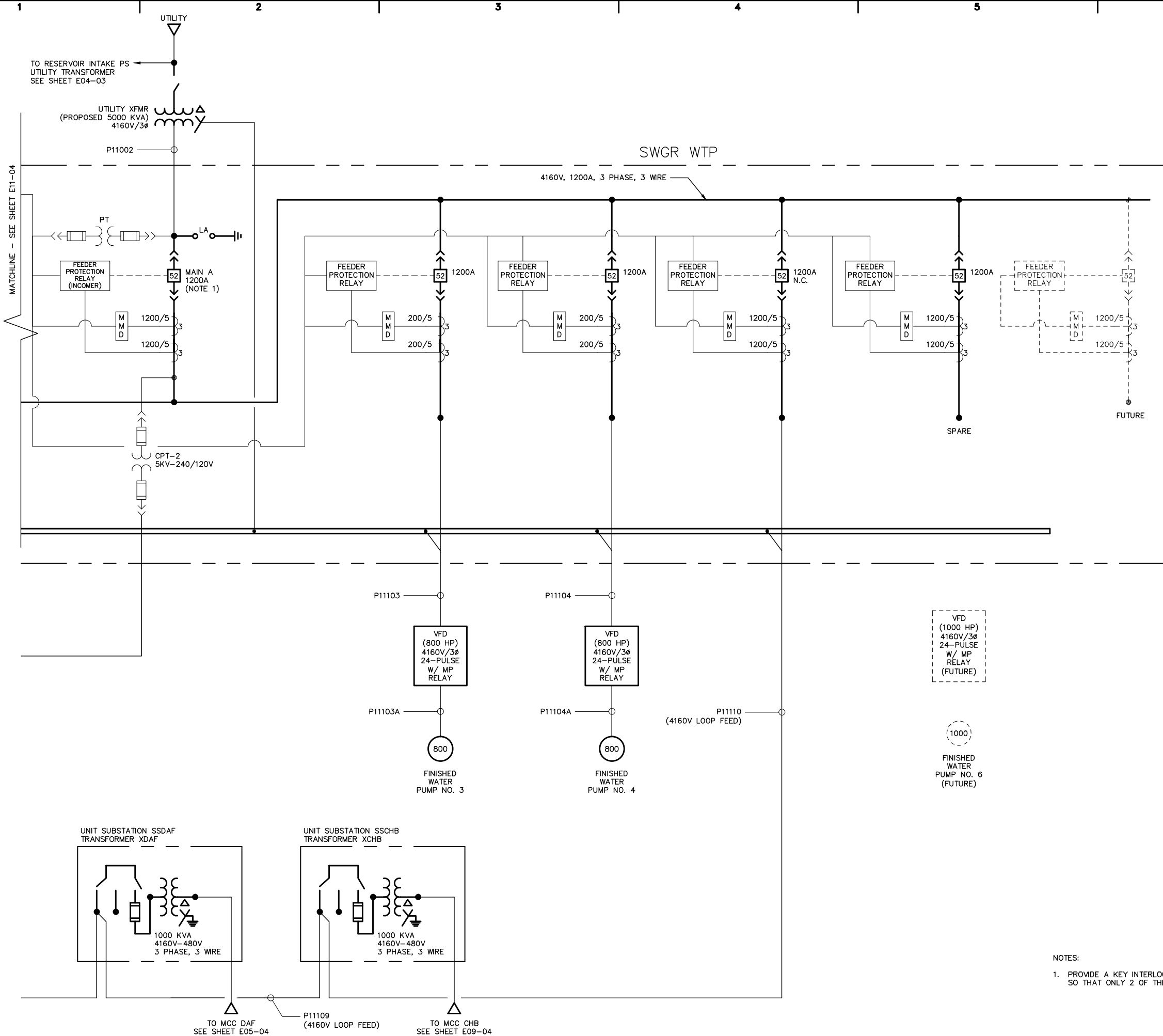
**ELECTRICAL
BUILDING – ONE
LINE DIAGRAM
4160V (2 OF 2)**

SCALE: NOT TO SCALE

E11-05

SHEET 559 OF 575

User: KURELLA, Spec: AUS-NC5MOD, File: C:\CADD\ACAD\PROJ\GA064015.0004 - PAULDING DESIGN SHEETS\WATER SUPPLY\ELECTRICAL\E11-05.DWG Scale: 1:1 Saved Date: 2/26/2016 Time: 1:58 Plot Date: Kurella, Keff, 2/26/2016, 13:00 - Layout: 559



- NOTES:
1. PROVIDE A KEY INTERLOCK FOR THE MAIN-TIE-MAIN BREAKERS SO THAT ONLY 2 OF THEM MAY BE CLOSED AT ANY ONE TIME.