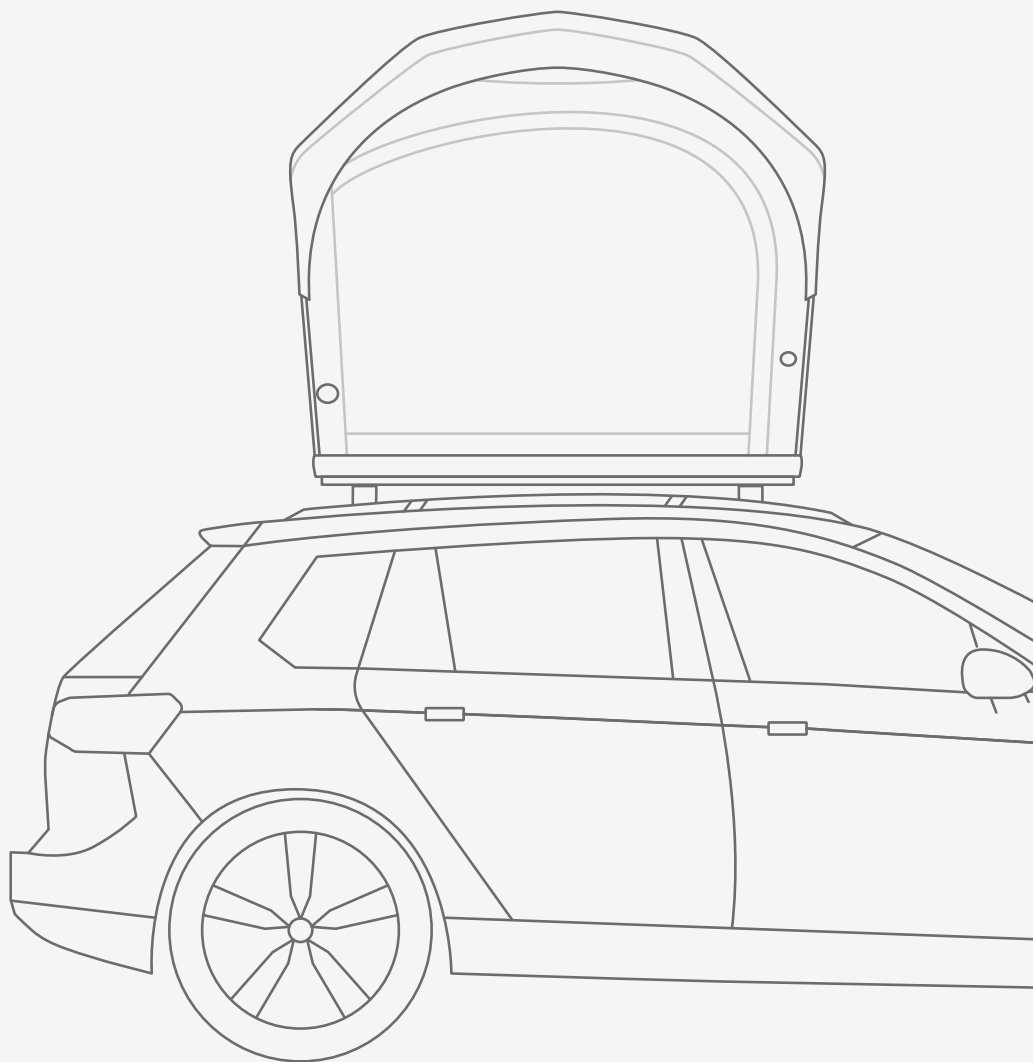


Freedom Air

Roof tent





**Experience a new
sense of freedom
together outdoor**

Z3808

Status: 16.04.2024



Freedom Air 2

Operating instructions & safety instructions

Contents

1. General information	4
1.1 Toolkit	4
1.2 Roof load	5
1.3 Vehicle height	6
1.4 Driving characteristics	6
2. Mounting on the vehicle	7
2.1 roof rack	7
2.2 Roof tent	7
3. Use of the roof tent	11
3.1 Technical details Air tent	11
3.1.1 Technical details of the electric pump	11
3.2 Components	12
3.3 Opening the roof tent	13
3.3.1 Inflating with a hand pump	19
3.4 Operation	21
3.5 Close roof tent	22
4. Maintenance & care	25
4.1 Fundamentals	25
4.2 Tent skin	25
4.3 zippers	25
4.4 Condensation / condensation water	26
4.5 Venting the mattress/ Mould stains	27
4.6 Abdeckplane	27
4.7 Soiling	28
4.8 Reparaturen	28
4.9 Maintenance of electric pump	28
4.9.1 Troubleshooting electric pump	29
5. Handling and storage	30
5.1 Fundamentals	30
5.2 Location	30
5.3 Structure	31
5.4 Drying the tent	31
5.5 Storage	31

6. Safety instructions for roof tent	32
6.1 Safety instructions for electric pump	34
7. Spare parts & scope of delivery	36
7.1 Scope of delivery electric pump	37
8. Dismantling the pump	37
9. Disposal	37
10. Return of old appliances	37

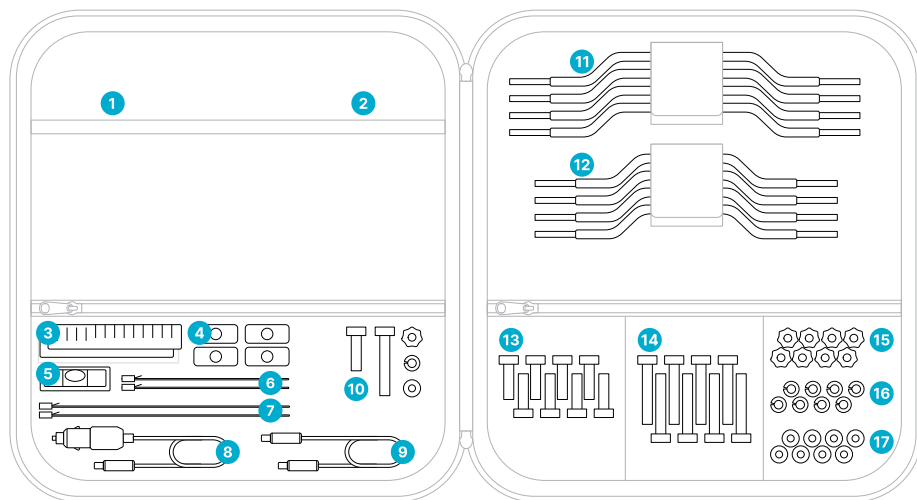
1. General information

You can hardly wait to embark on your rooftop tent adventure! But please take the time to read these operating instructions thoroughly before you get started. We have highlighted the most important instructions especially for you. Before your first trip, you should set up your tent once with the help of these instructions to familiarize yourself with the handling.

1.1 toolkit

A toolkit is included in the scope of delivery. This contains mounting tools to mount your roof tent securely on the roof rack. It also contains useful aids that can help you choose a pitch or solve problems.

In this toolkit you will find the following tools for your roof tent:



- 1 1x operating instructions
- 2 1x repair kit
- 3 2x Lineal
- 4 4x sliding blocks
- 5 1x spirit level
- 6 2x Reusable cable ties short
- 7 2x reusable cable ties long
- 8 1x DC 12V KFZ
- 9 1x DC cable for 12V power bank on both

- 10 sides 1x spare parts
- 11 4x mounting bracket large
- 12 4x mounting bracket small
- 13 8x short M8 screws
- 14 8x long M8 screws
- 15 8x M8 star knob nuts
- 16 8x Federring
- 17 8x washer

Which tool do I need for what?

To align the roof tent perfectly on your roof rack for mounting, you will find rulers in the toolkit with which you can center the roof tent on your car. The scope of delivery includes large or small mounting brackets. You can choose the right one depending on the roof rack model. See page 10 for more information. You will find long and short screws. Select the appropriate screw lengths depending on the thickness of your cross member (see page 10). The washers, spring washers and star grip nuts are required for mounting the roof tent (see page 10 for more information). When aligning the vehicle, the spirit level can help you to align the vehicle horizontally. To compensate for sloping terrain, park your vehicle upside down or use optional wedges for the wheels. Do you want it nice and warm and cozy? You can connect a heating hose from a roof tent heater through the round opening on the side of the roof tent. The two cable ties supplied help you to do this, which you can reuse again and again. A 12V DC cable with car adapter and a 12V DC cable with DC connection on both sides are also supplied. These are required to connect the air pump. You can find out more about this on page 16. If parts are lost, we have included a set of spare parts.

Tip:

If you do not have electricity available, you can also inflate your roof tent with a standard SUP pump. You can also purchase a suitable hand pump, the qeedo Travel Pump, and a 2m long extension hose from us.



1.2 Roof load

never exceed the roof load of your vehicle when driving. The roof load, which you will find in your vehicle's owner's manual, describes the so-called dynamic roof load. This is the maximum permissible roof load that must not be exceeded while driving. Exceeding the dynamic roof load has a major impact on the driving characteristics and is life-threatening! If you are unsure about the roof load of your vehicle, please contact your dealership or the vehicle manufacturer.

Don't be afraid!

When the vehicle is stationary, higher loads on your roof are not a problem as they are evenly distributed.



1.3 Vehicle height

After the roof tent has been fitted for the first time, it is important to measure the new vehicle height. Before driving into underground garages, multi-storey parking lots or your garage, you should make sure that your vehicle and roof tent will fit inside.

A little help:

To make sure you don't forget your new vehicle height, you should note it on the sticker supplied and affix it to the interior of your vehicle or your garage door opener so that it is clearly visible.

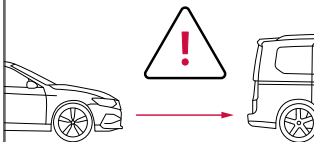


1.4 Driving characteristics

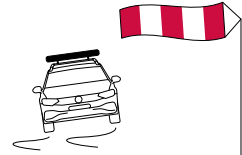
You should always be aware that the center of gravity of your vehicle changes significantly with a roof tent. Your vehicle will also be more susceptible to crosswinds. We recommend that you do not exceed the maximum speed of 120 km/h for your own safety and the safety of other road users. The braking distance is also longer due to the increased weight.



Recommended maximum
Speed: 120 km/h



Longer braking distance!
Keep your distance!



Susceptible to crosswinds.
Reduce speed.



Attention!

It is best to familiarize yourself with the changed conditions in a secure area
Driving characteristics of your vehicle.

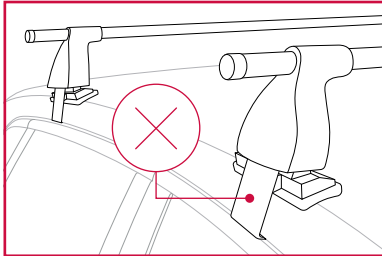
Tip:

The fuel consumption of your vehicle increases with a roof tent fitted. We therefore recommend avoiding unnecessary journeys with a roof tent fitted. If the roof tent will not be used for a longer period of time, you should remove it from the roof.

2. Mounting on the vehicle

2.1 roof rack

Before you can mount your roof tent on the vehicle, you need a roof rack, which is mounted crosswise on the vehicle. Roof racks are vehicle-specific parts and must therefore always be matched precisely to your vehicle. You can get help choosing the right roof rack from your local vehicle accessories dealer or vehicle dealer.



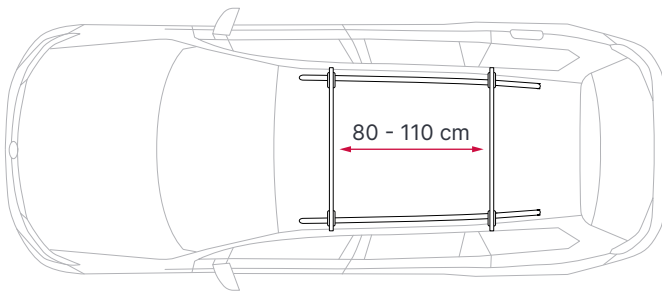
Attention!

Do not use your roof tent with any type of clampable roof rack in the door frame or similar, as the high point loads can cause damage to the roof.



Important!

The distance between the two cross beams must be at least 80 cm and must never exceed 110 cm.



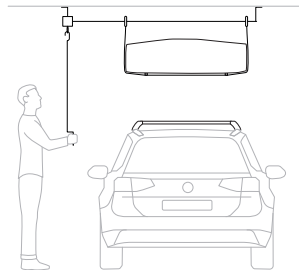
2.2 Roof tent

To be able to mount the roof tent on the vehicle, we recommend that you work with at least 2, preferably 4 people.



Tip:

A ceiling lift not only enables easy installation of the roof tent, but also safe storage of the roof tent on the ceiling of your garage.

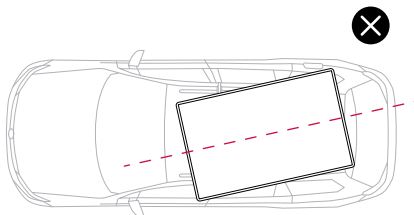
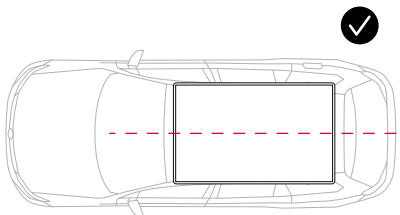
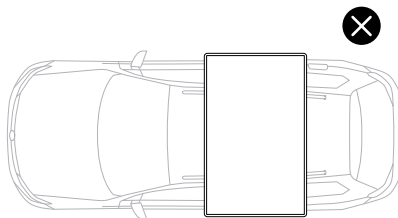
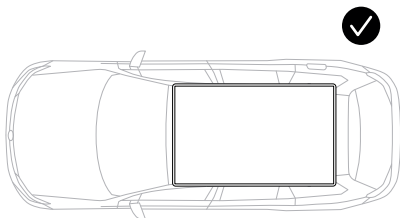


Once the roof rack has been fitted, you can place the roof tent on your vehicle. You can decide whether you mount the entrance on the driver's or passenger's side.

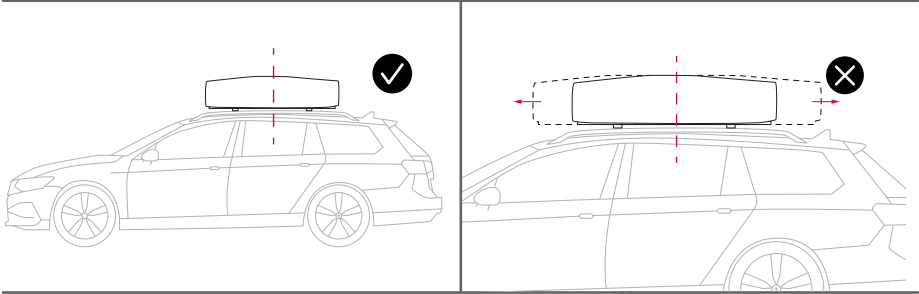


Attention!

Please mount the roof tent parallel to the vehicle.

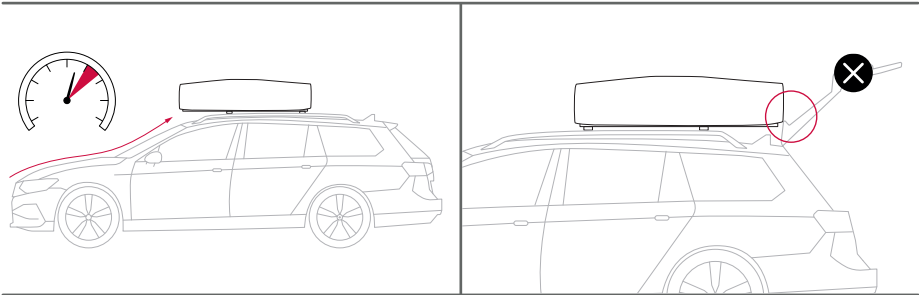


Mount the roof tent as centrally as possible on the roof rack.



Pay attention to the protrusions to the front and rear. If the tent is mounted too far forward, this has a considerable effect on the riding characteristics.

If the tent is mounted too far back, the opening of the tailgate may be affected. When installing the tent for the first time, please ensure that the tailgate functions correctly.



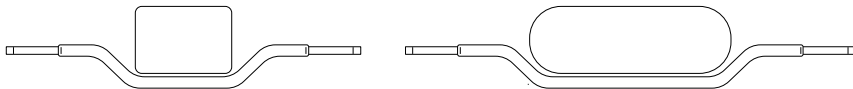
The attachment



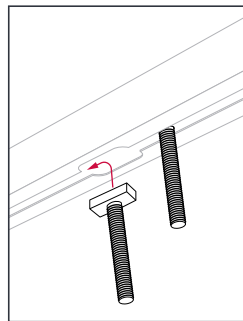
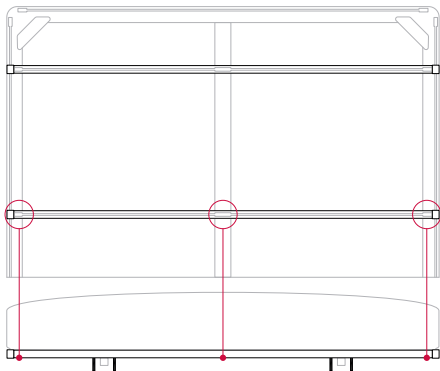
The following steps show
How to screw the roof tent to
the roof rack using the fastening
system supplied.

2. Mounting on the vehicle

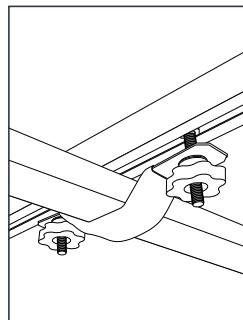
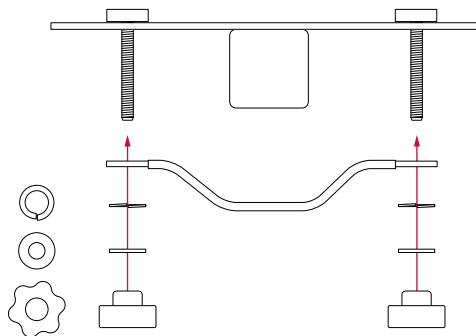
- 1 Select the right length of mounting bracket for your crossbar profile.



- 2 The heads of the screws are inserted into the mounting rail via the centrally positioned opening and positioned before and after the crossbar.

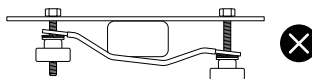
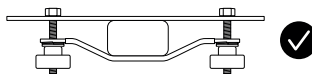


- 3 The bracket is attached to the two screws and fixed in place with a snap ring, washer and star knob nut. Select the correct screw length.



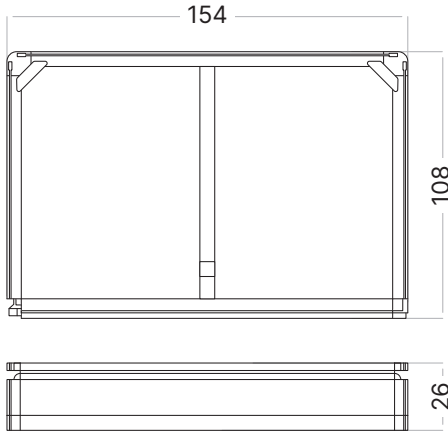
Attention!

Always tighten the screws evenly by hand on both sides so that the bracket is positioned horizontally.



3. Use of the roof tent

3.1 Technical details



Tip:

Familiarize yourself with the operation of the roof tent before your first trip.



3.1.1 Technical details electric air pump

Water protection: IP20

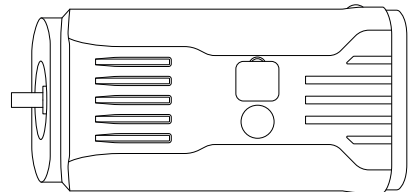
Volt: 12 V

Ampere: maximum 3 A

Noise emissions: maximum 75 DB

Maximum recommended operating time: 10 min

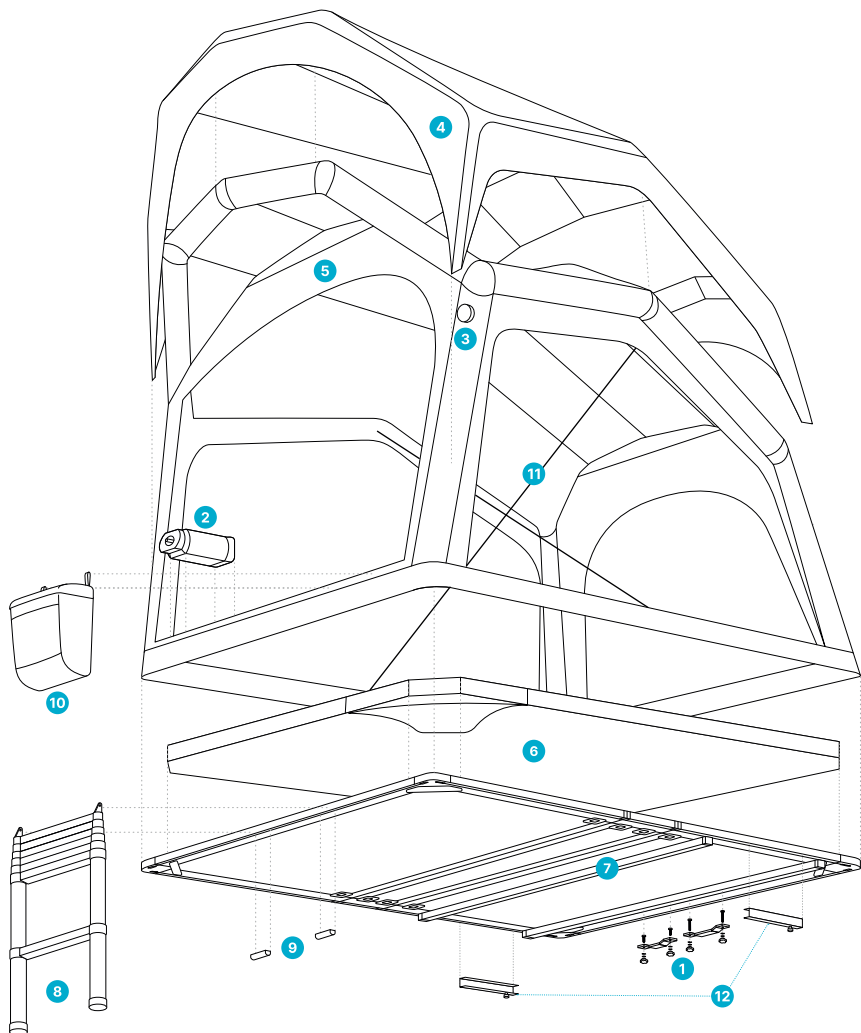
Power plug type: DC plug to 12 volt car plug / DC to DC power cable



3.2 Components

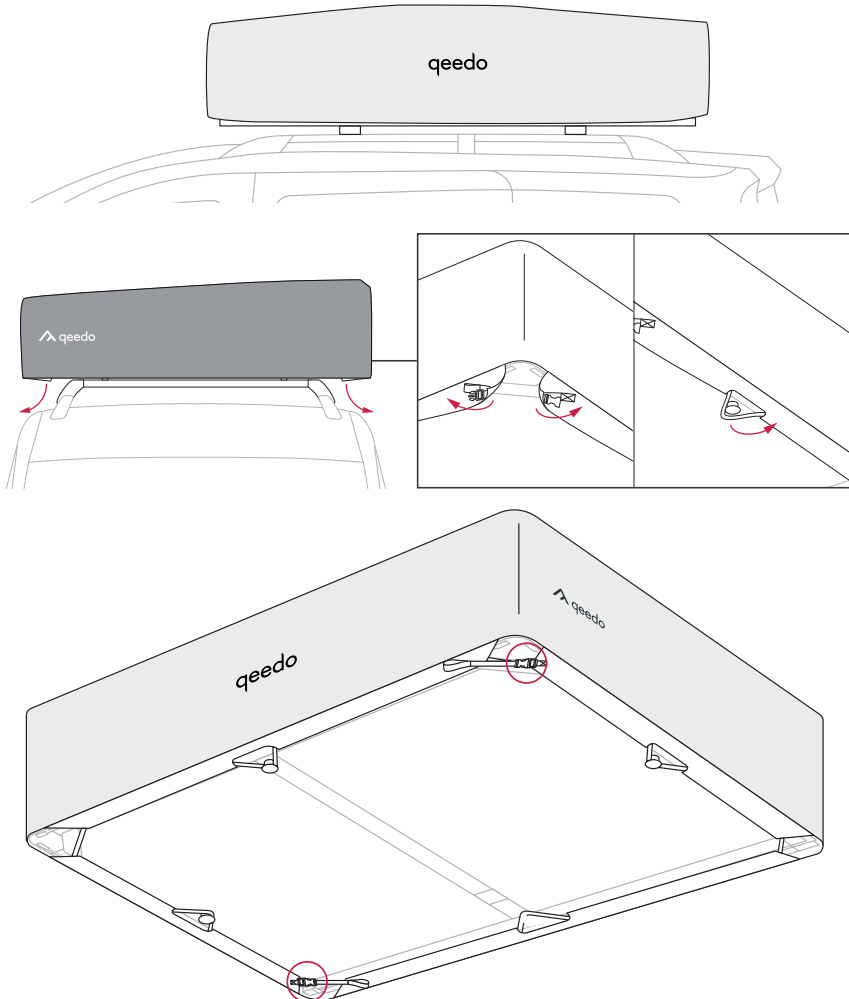
Pos.	Designation
1	Mounting kit
2	Electric pump
3	pressure relief valve
4	Outer tent
5	Inner tent
6	Mattress

Pos.	Designation
7	Aluminum mounting rail
8	Manager
9	Ladder fixture
10	Shoe bag
11	Clothesline/ feeding aid set of 2
12	U-Rail left & right



3.3 Opening the roof tent

- 1 Remove the soft cover. Undo the buckles at the corners and unhook the fastening loops of the cover from the mushroom heads.



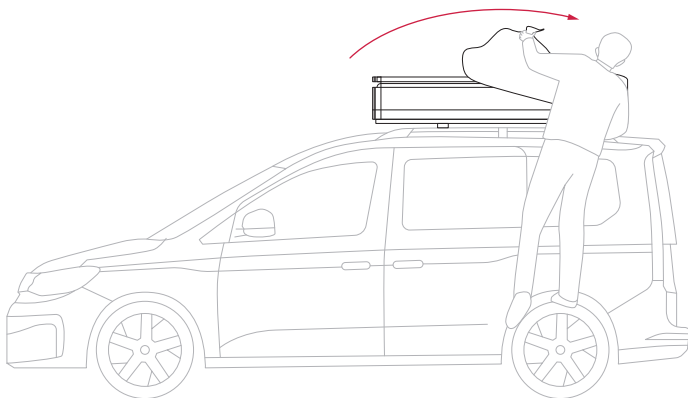
Tip:

The light gray areas on the soft cover show you on which side the entrance to the roof tent is located.

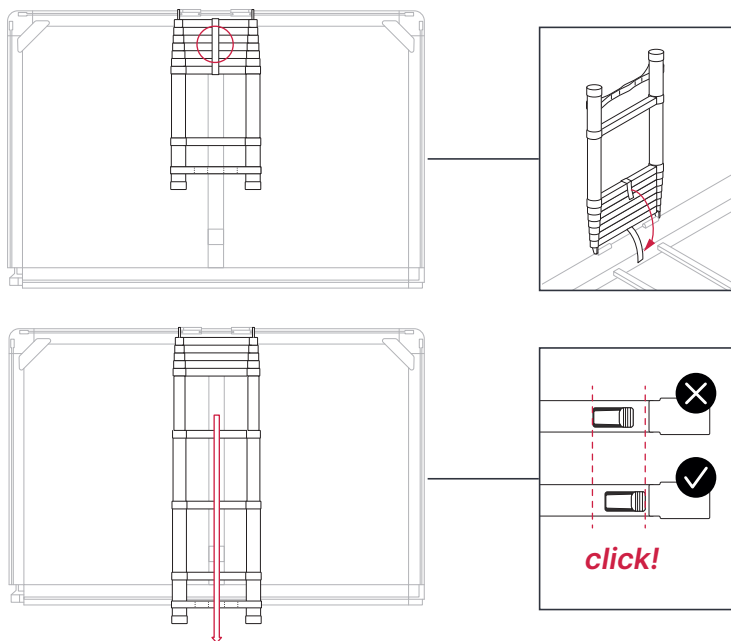


3. Use of the roof tent

2



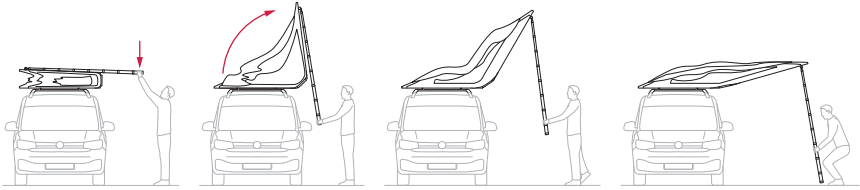
3 Unlock the ladder and extend it completely



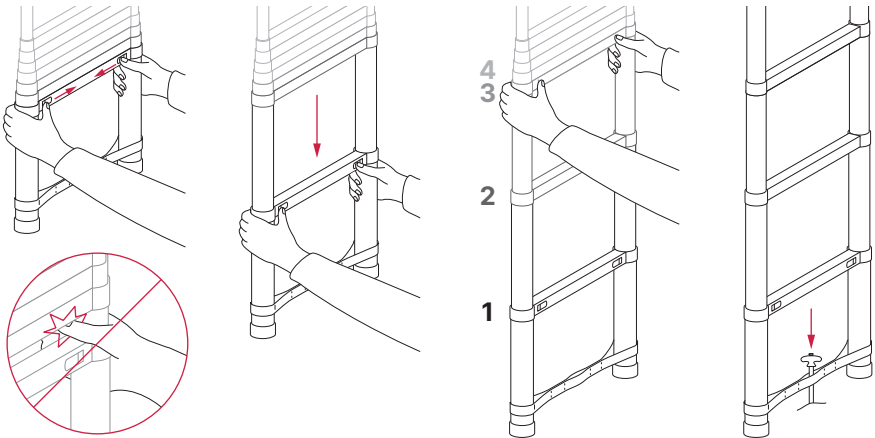
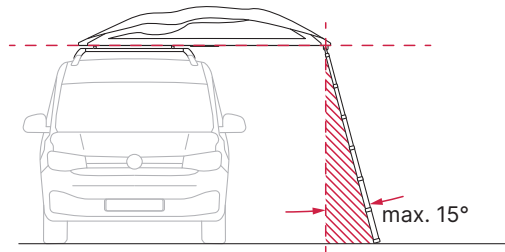
Attention!

Make sure that the ladder sections click into place when you pull them out. You will hear a click.

4 Use the ladder as a lever to erect the tent.



5 Fully retract the ladder and start pulling out the steps from below. This allows you to determine the perfect length of the ladder. Depending on the vehicle height, you can set the last ladder step to a half or full distance.



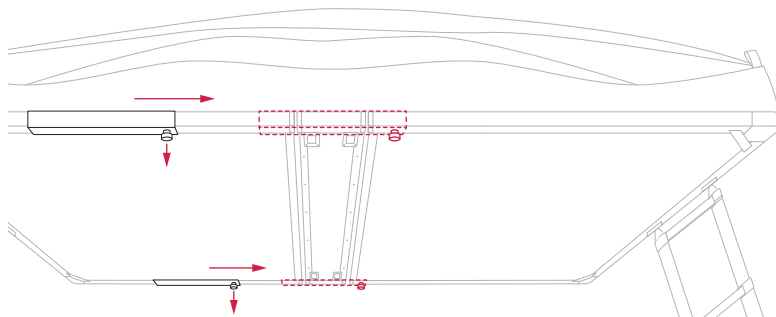
Attention!

Make sure that the ladder has a secure footing. This also serves as a support for your pop-up roof tent.



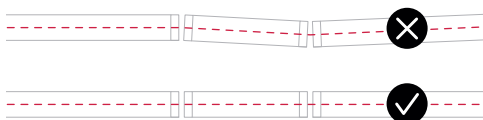
3. Use of the roof tent

- 6 Engage the rail on the underside.

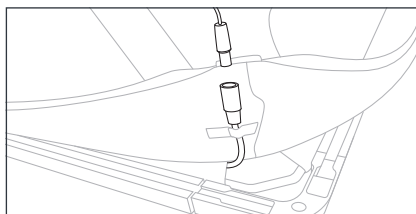
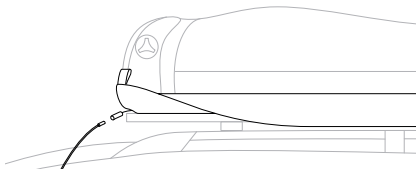
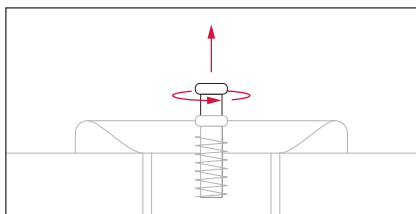
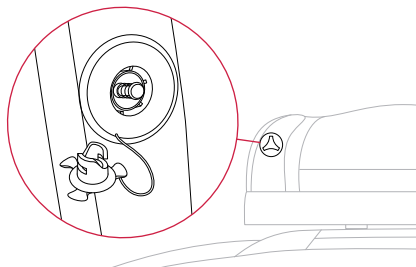


Important!

Align the ladder correctly!



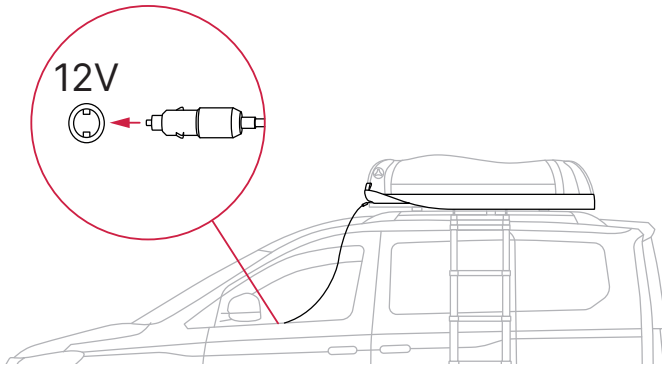
- 7 Check that the valve is closed; the spring pin must be in the extended position. The valve cap must be closed. Connect the pump to the 12 volt cable on the roof tent.



Attention!

In the event of rain, pull the tent fabric over the plug connection of the cable to protect it from moisture.

- 8** insert the 12 volt vehicle plug into the 12 volt socket of the vehicle. If necessary, switch on the vehicle ignition.



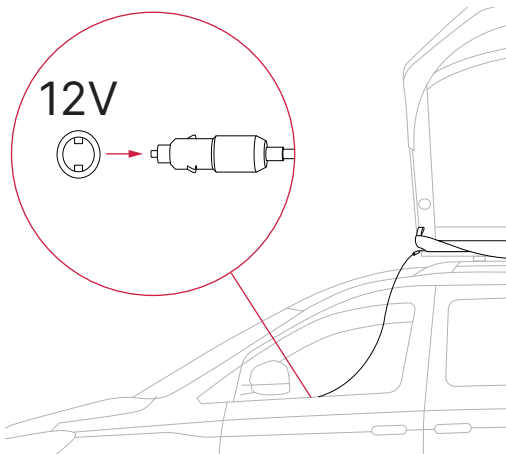
Tip:

You can also use a suitable 12V power bank with at least 2 amps voltage and at least 5200 mAh storage capacity for inflation.

Attention! This is a special power bank. (The normal power banks have a voltage of 5V and are unsuitable)



- 9** The pump starts automatically when plugged in. The pump now provides the necessary pressure of 7PSI (0.5 bar) in the air tent hoses. When the required pressure has been reached, the pump stops automatically. However, inflation stops after 8 minutes at the latest. After inflation, the power cable between the car and the roof tent should be removed.



Attention!

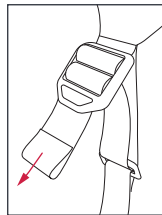
Always hold the cable by the mains plug and do not pull it out of the power source by the cable!



3. Use of the roof tent

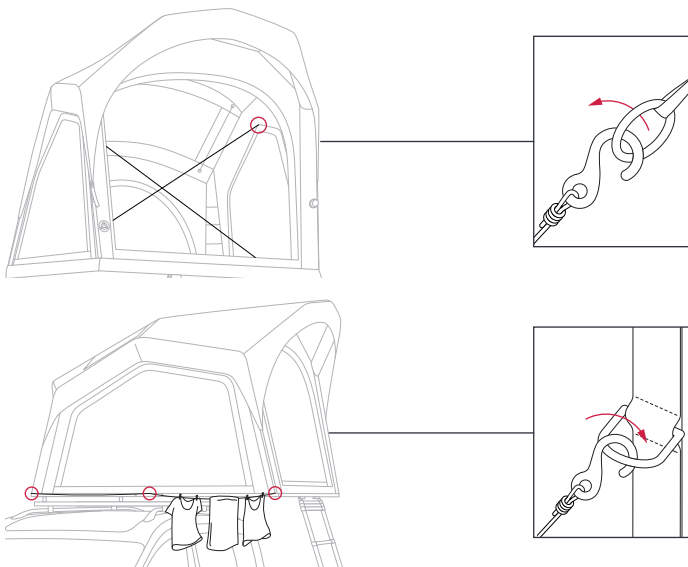
Tip:

If the outer tent sags a little, you can bring this to tension with the belts.



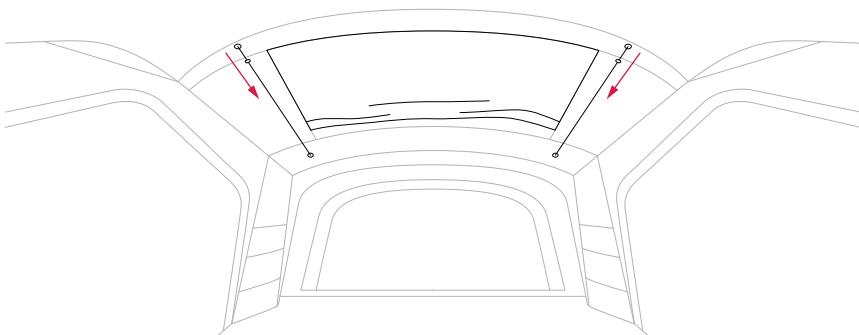
10

Loosen the elastic bands. These can now be used as washing lines on the side of the roof tent.

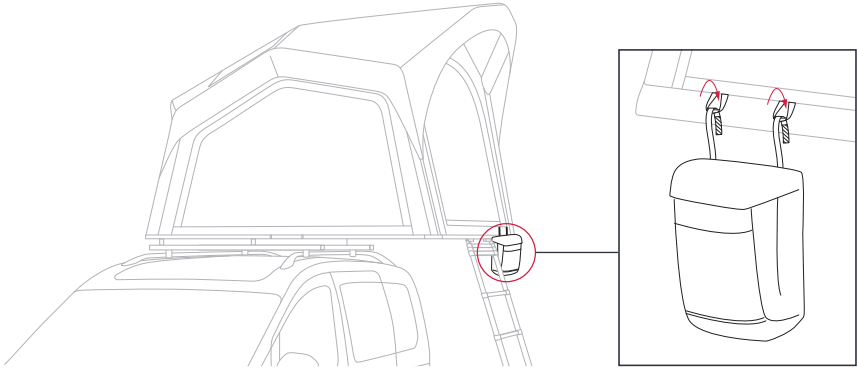


11

Open and close the roof curtain using the cords.



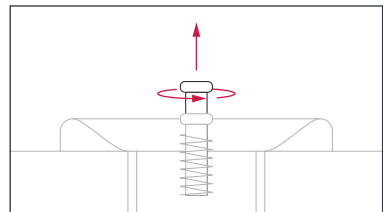
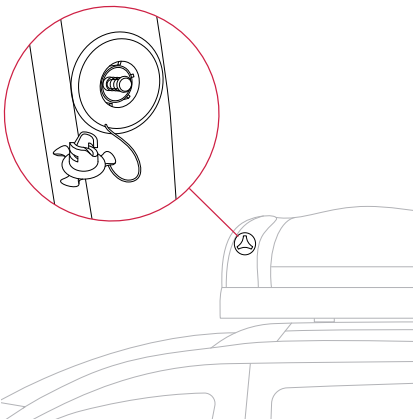
11 Done.

**Tip!**

Our shoe bags are water-repellent. The mesh in the lower area provides ventilation for your shoes and you can dry a towel on the lower line, for example. If you wish, you can buy another shoe bag from our store.

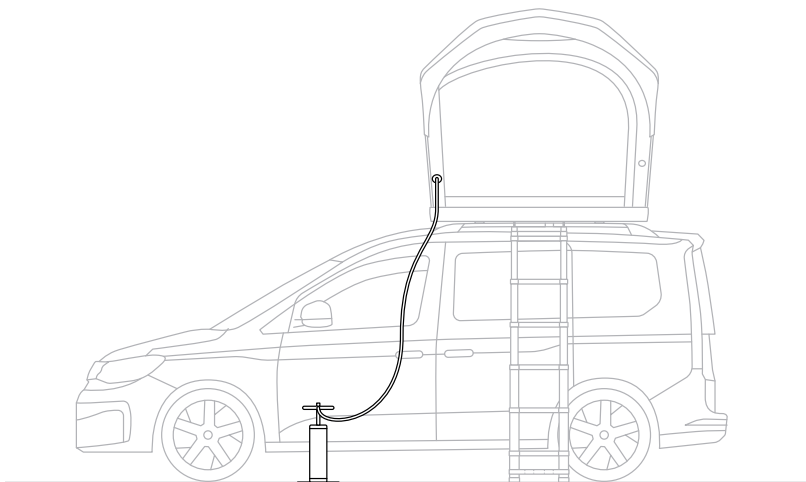
**3.3.1 Inflating with a hand pump**

- 1 Check whether the valve is closed, the spring pin must be extended.

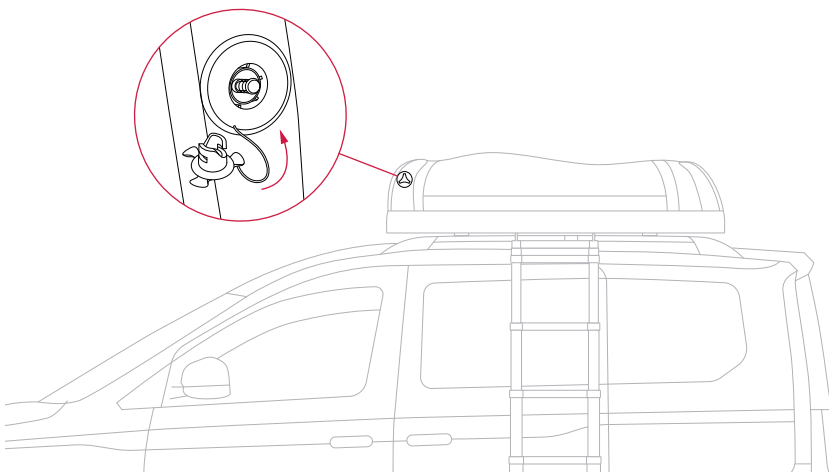


3. Use of the roof tent

- 2** Connect the hose to the roof tent and pump.



- 3** Inflate the roof tent until the pressure relief valve whistles slightly or 7 PSI is reached. Remove the hose and screw the valve cap onto the roof tent.



Tip:

The hand pump and hose extension are not included in the scope of delivery. You can also purchase a suitable hand pump, the qeedo Travel Pump, and a 2m long extension hose from us.

3.4 Operation

Your roof tent is equipped with great functions.

Comfort mattress

We have gotten the maximum comfort out of the mattress. The cover is already equipped with an integrated 3D mesh on the underside so that your mattress is already perfectly ventilated. An additional 3D mesh is not necessary.

Skylight

Watching the stars before going to sleep on a clear day? How romantic. Fogged up windows? Simply wipe them with a micro-fiber cloth.

Storage space

Inside you will find small pockets and two side organizers. We have provided eyelets on the roof lining for a large storage net, which you can purchase as an option. And best of all: thanks to the integrated tablet holder, your movie night is guaranteed! :)

Protection from mosquitoes

All windows are fitted with fine but robust mesh to protect you from insects.

Warm air system

If you want to be nice and cozy and warm on a cold night, you can optionally connect a roof tent heater. For this purpose, we have provided a round heat air hose inlet on the side.

Cold nights?

Our qeedo roof tents come with a matching thermal inner tent. This provides additional insulation and is highly recommended for winter camping!

Shoe bag

The shoe pocket at the side of the entrance is well ventilated and water-repellent. There is also a towel holder at the front. If required, you can also purchase a second shoe bag.

Carrying handles

After your adventure, simply carry your roof tent to the storage location with the detachable carrying handles.

Tip:

If you cannot store your roof tent using our ceiling lift, you should always make sure that you store your roof tent in a dry environment and protect it from UV radiation. It is best to always place a piece of cardboard underneath to protect it. You can store your roof tent both horizontally and vertically

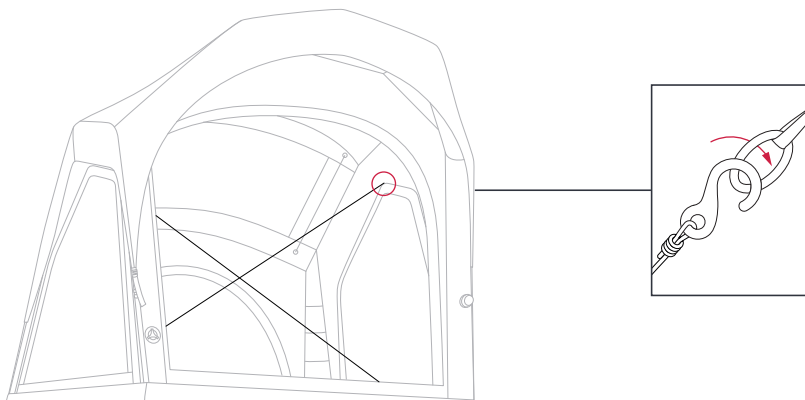


3.5 Close roof tent

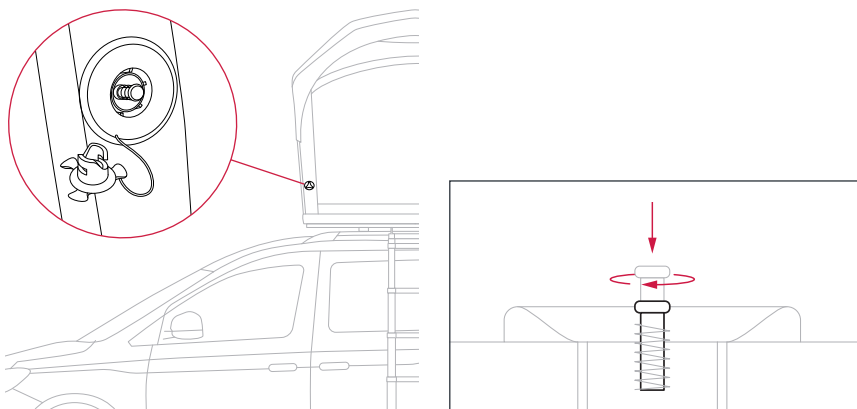
Tip:

If it is wet, you should close the entrance door of your tent before folding it up to prevent water from getting inside. Nevertheless, you should open at least one side window before closing the tent to allow air to escape.

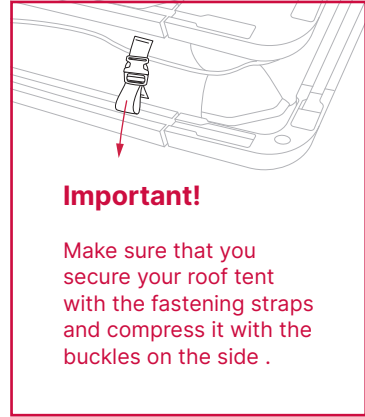
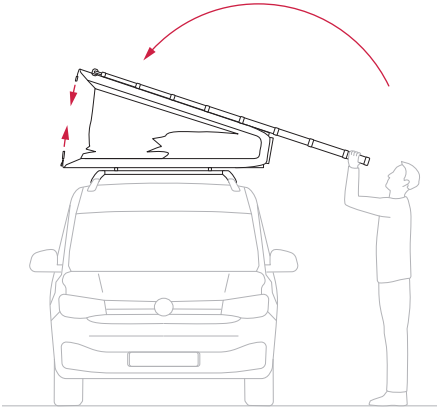
- 1 Attach elastic bands on the inside so that the tent skin is not pinched when the roof tent is folded down.



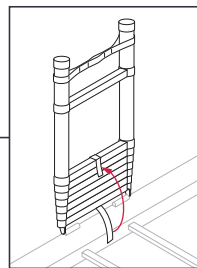
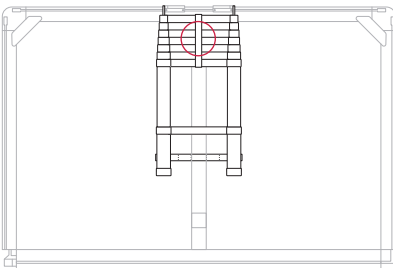
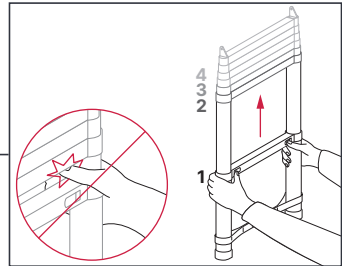
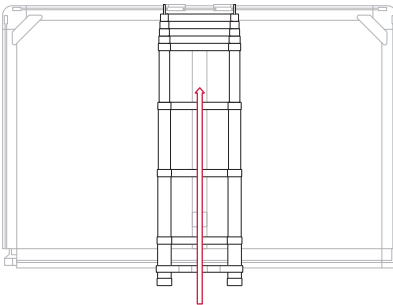
- 2 Open the valve cap while pressing the spring pin and turning it clockwise so that it engages in the pressed-in position. This allows the air to be released. Do not be alarmed! The abrupt release of air produces a loud bang.



- 3** Fold the tent fabric inwards. Fold up the tent using the ladder. It is best to extend the ladder fully first.

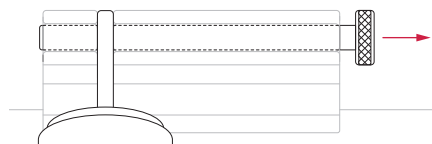


- 4** Retract and secure the ladder.



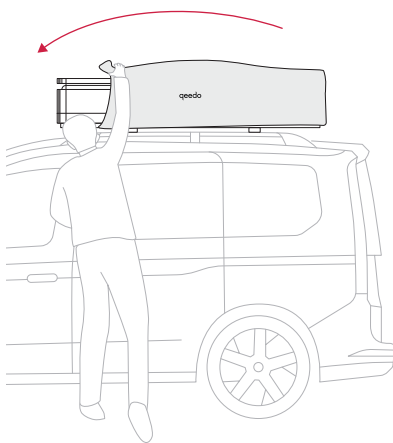
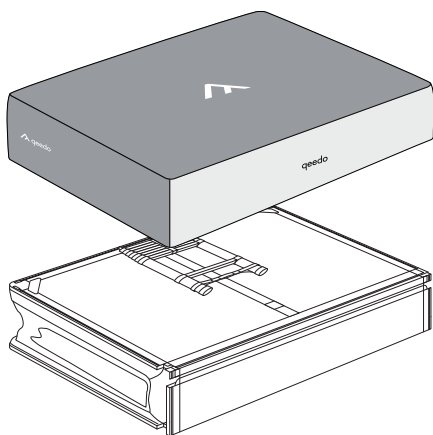
Tip:

The ladder can be easily removed by pulling the pin.

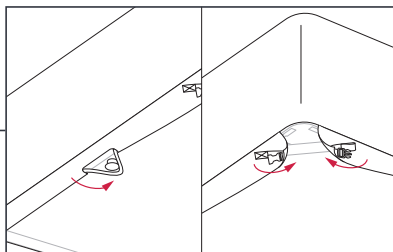
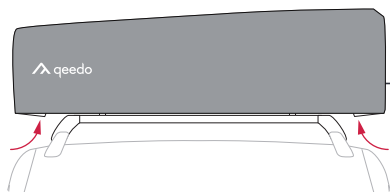


3. Use of the roof tent

- 5** To attach the soft cover correctly, you should ensure that the long light gray side of the soft cover is on the side with the hinges. This will make the entrance to the roof tent clearly visible.



- 6** To secure the tarpaulin, first place the four straps in the middle over the mushroom heads. Then close the buckles on the corners of the soft cover and tighten them.



Attention!

Before setting off, make sure that all fasteners are closed and that your roof tent is free of fallen branches, for example.

4. Maintenance & care

4.1 Fundamentals

Your Qeedo roof tent is a quality product. Nevertheless, you should pay attention to a few basic things in order to get the most out of your roof tent for as long as possible.

4.2 Tent skin

You should impregnate your tent from time to time. This keeps the fabric waterproof and the seams supple. How often you do this depends on how often you use your roof tent. However, we recommend treating it at least once a year with a liquid tent waterproofing spray.

We use very high-quality and durable materials because we want you to enjoy your roof tent for a long time. Nevertheless, the tent material ages more quickly depending on use and environmental influences. Daily use over a longer period of time reduces the service life of your roof tent.

Important!

Avoid unnecessary UV exposure by storing the tent dry and protected from the sun when not in use.



4.3 zippers

Unlike clothing, you need to look after the zippers on your roof tent. With clothes, this is done by your washing machine and special additives in the detergent. To ensure that the zippers on your roof tent still work perfectly even after ten years, you should remove dirt from them regularly.

Despite all care and attention, environmental influences such as dust, sand or salt water can cause signs of wear and affect the function. If, for example, a closed zipper comes undone, return the zipper to its original position and try to close the zipper again. If the problem persists, it may be necessary to squeeze the tab (zipper slider) slightly with pliers. Please proceed very carefully and in small steps.

Tip:

Treat the zippers with silicone oil from time to time. This keeps them supple and prevents them from snagging.



4.4 Condensation / condensation water

How does condensation form? There are several causes of condensation in the tent:

1. Breathing moisture/body heat

Everyone releases water during sleep in the form of respiratory moisture and body heat. On average, up to 500 ml of water is produced per person per night.

2. High humidity

The weather plays a major role here. With high humidity and large temperature differences between day and night, a lot of moisture condenses on cold surfaces.

3. Wet clothing

Taking wet and damp clothing into the tent increases the risk of condensation enormously. It is better to dry and store items of clothing or towels outside the tent.

The result:

The resulting moisture is trapped in the warmer air in the tent and gradually condenses on the cold outer skin of the tent from the inside. This effect is familiar from an ice-cold drink in summer, where condensation also forms quickly and collects in drops on the cold surface.

If the outer skin is shaken by rain or wind, the drops come loose and spread throughout the tent, which is often mistakenly interpreted as a leak in the outer skin.



Tip:

There is only one remedy here - ventilation.
If the tent is well ventilated, there will be no condensation.

Moisture must be able to escape from the tent, which is why our tents are equipped with weather-protected ventilation openings that allow proper ventilation even in rainy weather. In addition, our roof tents are equipped with breathable membrane material in certain areas. This material has the property that it is open to diffusion and allows the exchange of water vapor and thus moisture.



Important!

To prevent condensation, always ventilate well and do not bring wet clothing into the tent!

4.5 Venting the mattress/ Mould stains

Moisture in the tent can not only condense on the canopy but also under the mattress. This can be caused on the one hand by body heat and on the other by condensation collecting under the mattress. As the mattress lies flat on an air- and water-impermeable base plate, the mattress cannot dry out on its own. Ventilation is absolutely essential here. We therefore recommend allowing the mattress to dry completely after every night.

Important!

To prevent mold and mildew stains from forming on the underside of the mattress, the mattress must be set up and dried after every night.



Tip:

The cover of our mattress has an integrated 3D mesh mattress base. This special spacer fabric, consisting of interwoven, vertically positioned polyester webs, can withstand a very high surface load despite its low weight. The high air content of this structure enables permanent circulation between the mattress and the base, thus preventing the concentration of moisture. This effectively prevents mold and mildew stains.
by the way: You can wash the mattress cover in the washing machine at a maximum of 40 degrees.



4.6 Abdeckplane

The tarpaulin is made of a robust polyester material that will last a long time with appropriate care. Make sure that the cover is always clean and completely dry before storage.

- Wash off dirt with cold or warm water.
- For coarse dirt, clean surfaces with soft-bristled brushes.
- Rinse off dirt and cleaning agent with clean water (warm or cold) until the cleaning agent has been completely removed. Always follow the cleaning agent manufacturer's recommendations.

4.7 Soiling

If the tent fabric is soiled, wash it with warm water and a soft, damp cloth and allow to air dry.



Important!

Please do not use cleaning agents or brushes to clean the tent fabric, as these can damage the surface structure and coating of the fabric.



Tip:

Resin drops are particularly annoying and stubborn. However, these can be removed with a simple trick. Simply treat the resin drops with an ice cube and "freeze" them. Once the resin drops are frozen, they can be easily removed from the tent fabric.

4.8 Reparaturen

Small tears can be sealed with the repair patch supplied. Larger tears should be sewn by a specialist. Do you need more spare parts and accessories? Contact us or have a look in our store.

service@qeedo.de

4.9 Maintenance of electric pump

Care and cleaning:

Only wipe carefully with a slightly damp cloth and leave to dry thoroughly in a dry place.



Attention!

Listen for unusual noises when using the electric pump.

Storage:

Make sure that the power cable and the air hose of the hand pump are not pinched or kinked during storage.

4.9.1 Troubleshooting electric pump

Error/problem	Potential solution
Pump does not build up pressure	<p>Check the plug connection between the vehicle and the pump on both sides. Does the vehicle's 12 V socket have power? If necessary, switch on the vehicle ignition.</p> <p>When using a power bank, the wrong volt figure or the incorrect cable plug connection may be the cause. The power bank must have a voltage of 12 volts and a current of at least 2 amps. We recommend at least 5200 m storage capacity.</p> <p>Check that the tent air hose is correctly connected to the pump. If air is escaping, this may be indicated by a noise. Screw the pump firmly onto the hose connector.</p>
Unusual noises	<p>Air escapes, check connections and air hose for leaks.</p> <p>Pump roars, air inlet opening must not be covered. No improvement, contact customer support.</p>
Pressure in the air hose drops	<p>If the temperature fluctuates greatly between day and night, the air hose may lose pressure. This is normal and can be remedied by re-inflating. If the air keeps escaping, the air hose should be replaced. A replacement hose can be purchased from the manufacturer.</p>
Part of the air hose does not deflate	<p>The drain valve must be open and must not be damaged or covered.</p> <p>Eliminate kinks or twists in the air hose.</p>

Attention!

Only carry out repairs recommended and instructed by qeedo!



5. Handling and storage

5.1 Fundamentals

Qeedo roof tents are manufactured using the latest production methods. We always try to make all functions as simple as possible. All moving parts are normally very smooth-running. If something should jam or block, make sure that nothing is jammed or joints are blocked by objects. Do not use force!



Tip:

Familiarize yourself extensively with your roof tent before your first adventure. Only when you have understood all the functions will you have fun with your roof tent. Use the two carrying handles to carry your roof tent.

5.2 Location

We rely on your common sense - this is important for every adventure. Even with rooftop tents. We know that many pitches and locations are very tempting. But always make sure that you are not putting yourself and others in danger.

Keep your eyes open when choosing a location

- Always choose a location with as level a surface as possible. Sloping terrain is always dangerous. In addition, it is not very comfortable to sleep if the vehicle is very sloping.
- Do not spend the night in areas at risk of flooding. The water level in streams and riverbeds can rise very quickly during rain and other events.
- Do not spend the night below rockfall-prone slopes; large trees with rotten branches also pose a danger.
- Always position your roof tent with the entrance facing into the wind. This is the only way to protect the entrance from wind and rain.

Prevent storm damage

Do not leave your roof tent unattended during storms or thunderstorms. During storms or thunderstorms, you should fold up your roof tent and seek shelter in the vehicle. Storm damage is excluded from the warranty.

Attention!

A roof tent does not have a Faraday cage. You are not safe in your roof tent during thunderstorms!



Tip:

If you have household contents insurance, you can include your roof tent in it record. Clarify this directly with your insurance company.



5.3 Structure

Only a fully and correctly erected tent offers complete safety and full functionality. It is important that the tent is always fully unfolded and that the tent material is taut. A tent roof that is too loose or heavily folded prevents rainwater from draining away quickly and encourages the formation of water pockets and the penetration of water into the tent.

5.4 Drying the tent

If possible, the tent should always be taken down and stowed away well dried. If this is not possible, the tent can also be folded up when wet. In this case, it is important to close the inner tent beforehand so that the inner tent and mattress do not get wet. However, the roof tent should always be opened again within 24 hours and dried properly.

5.5 Storage

If the tent will not be used for a longer period of time, we recommend removing the roof tent from the vehicle and storing it in a dry place. Always allow it to air out and dry properly to prevent mold growth. The roof tent can be stored horizontally or vertically on the ground. For better handling, we recommend using a ceiling lift. With its help, the roof tent can also be quickly and easily assembled and disassembled on your own. This is also available in our store.

Important!

To prevent mold and mildew stains from forming on the underside of the mattress, the mattress must be set up and dried after every night.

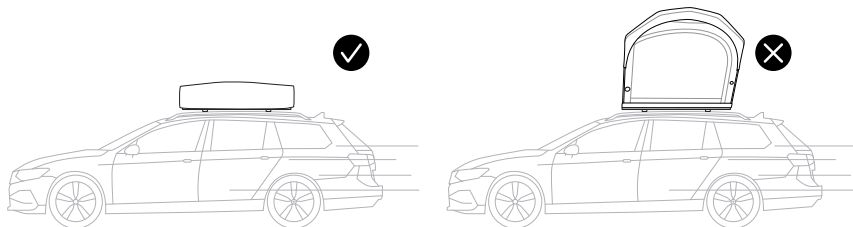


6. Safety instructions for roof tent



Important!

- Before every journey, check that the roof tent is securely mounted on the roof rack. Depending on the surface and road conditions, further checks should be carried out during longer journeys.
- Make sure that the roof tent is always closed and locked while driving.



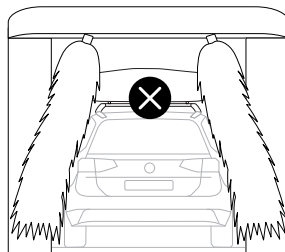
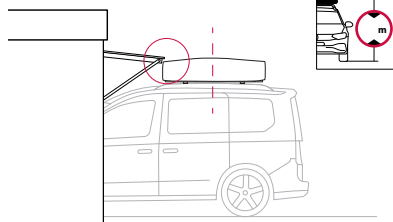
- If the roof tent has not been used for a longer period of time, all buckles and fastenings should be checked to ensure that they are in good condition.
- An improperly attached roof tent can come loose while driving and cause serious accidents.
- Observe the vehicle manufacturer's specifications regarding the maximum dynamic roof load.

How is the roof load determined:

Roof rack weight + roof tent weight + payload weight = total roof load

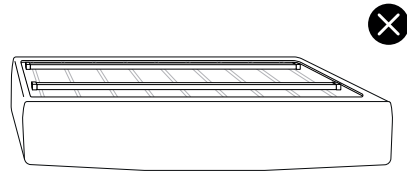
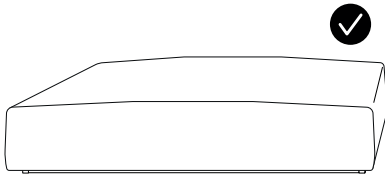
- The permissible total weight of the vehicle must not be exceeded.
- Adapt your speed to the road and traffic conditions, wind and weather, as well as the applicable speed and traffic regulations.
- Under no circumstances may your maximum speed exceed 120 km/h.
- A fitted roof tent can cause wind noise while driving.
- The vehicle height is significantly increased by your roof tent.
- The roof tent and roof rack must be removed from the car before using an automatic car wash.

Don't forget the stickers!





- In addition to the safety instructions in these operating instructions, please also observe the installation instructions for the roof rack (load carrier) and the vehicle.
- For reasons of safety, energy efficiency and wear and tear, the roof tent and roof rack should be removed when not in use.
- The mounting rails of the roof tent should always point downwards when stored.



- For your own safety, only use roof bars that have been tested and approved for your vehicle.
- Always mount the roof tent parallel to the road surface to prevent increased up- or downforce.
- If no special mounting positions of the roof rack are specified, the distance between the two roof racks should be between 80 cm and 110 cm. Structural changes to the roof tent (e.g. additional holes) are not permitted
- We recommend that you always keep these operating instructions with you in the vehicle.
- Any modification to the roof tent or the use of other replacement parts or accessories will invalidate the manufacturer's warranty and liability for damage to the material or accidents.
- The manufacturer is not liable for damage and accidents caused by disregarding the operating instructions, modifying parts or using parts other than the manufacturer's original spare parts!
- Follow these instructions for use exactly and only use the original parts supplied. If parts are lost or worn, they can be ordered directly from the specialist dealer or manufacturer.
- The roof tent should not be stored outdoors, but in a dry place and protected from the weather (e.g. from rain or direct sunlight).
- Never park your roof tent near an open fire or embers! Flying sparks can also irreparably damage your tent.
- Do not use naked flames or other heat sources in the tent or near the tent fabric! The use of any fuel-powered devices in the tent is also not permitted. Carbon monoxide can be fatal!
- Always observe the safety instructions for the devices you use in the tent!
- Children can be seriously injured if they fall out of the tent!
Remember your duty of supervision!



- Do not be under the influence of alcohol or drugs when using the ladder or the roof tent.
- Remember to secure the vehicle against rolling away and unauthorized access!
- Make sure that the ladder is always properly engaged!



6.1 Pump safety instructions



Attention!

WARNING! Failure to observe these warnings can result in death or serious injury. Risk of electric shock!

- This product is not suitable for use by persons (including children) with reduced physical, sensory or mental capabilities or lack of experience and knowledge. Unless they are supervised by a responsible person or have been instructed in the use of the product.
- If the cable or the electric air pump are visibly damaged, they must not be put into operation.
- The cable and the electric air pump must remain free of moisture, rust or dirt.
- The electric air pump should always be stored in a dry place.
- Protect the air hose from sharp objects, otherwise it could be damaged.
- The appliance should be supervised during use.
- never open the zippers of the air hose while it is inflated.
- Protect the air pump from direct sunlight.



- Risk of strangulation due to power cable! Use only out of reach of small children.
- This electric pump is only intended for inflating the supplied qeedo air tent and not for any other objects.
- The air hoses may only be filled with pumps recommended by qeedo.
- Please note the recommended air pressure of 7 PSI (0.5 bar).
- Make sure that no sand, stones or dirt are drawn into the pump. The air intake openings must not be closed.
- Please keep your head away from the air hoses during the pumping process.
- Please always use an intact and charged 12 volt car battery.
- Do not connect any external devices.
- The pump must not be used in continuous operation. At least 10-minute breaks must be taken between pumping operations.
- Disconnect the electric air pump from the power supply.
 - before each cleaning and care
 - after each use
- When unplugging the mains plug, do not pull on the cable, but on the plug for the car socket.
- The cable should be disconnected after the pumping process. Do not leave the cable plugged in while you are in the tent.
- Repairs and the replacement of components on this electric air pump may only be carried out by qualified specialist personnel in order to avoid safety risks. Incorrect repairs can result in serious hazards.

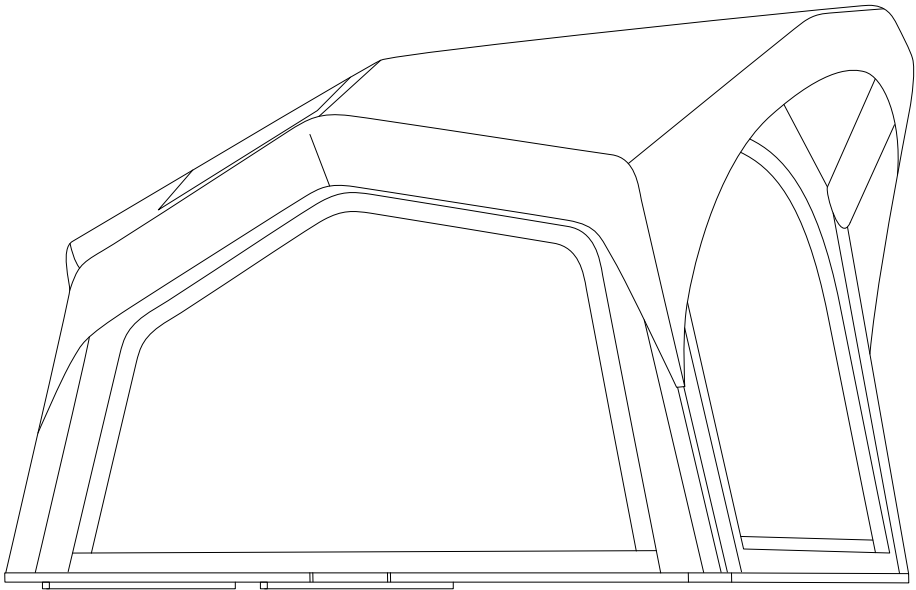
7. Spare parts & scope of delivery



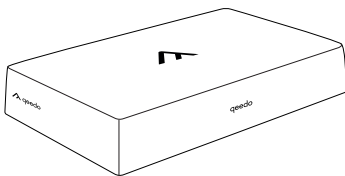
Tip:

If you need a spare part, please contact us: service@qeedo.de

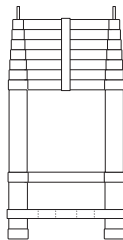
Scope of delivery:



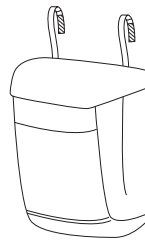
Roof tent



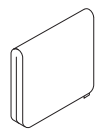
Softcover



Manager



Shoe bag



Toolkit

7.1 Electric pump scope of delivery

- Pump incl. cable plug connection (integrated in the roof tent)
- Power cable with plug for car socket and DC connection
- Power cable with DC to DC for 12-volt power bank

8. Dismantling the pump

Attention!

Only remove the pump from the roof tent if instructed to do so by qeedo!

1. Release the air by opening the valve.
2. Open the two Velcro straps that enclose the pump.
3. Hold the end of the hose and slowly unscrew the pump. Then carefully remove the pump.

9. Waste disposal

Information on the Electrical and Electronic Equipment Act 3 - ElektroG3

Meaning of the crossed-out dustbin symbol:

The crossed-out waste garbage can means that you are legally obliged to dispose of these devices separately from unsorted municipal waste, i.e. old devices must be disposed of separately from household waste. Contact a local recycling center or specialist dealer to find out how to dispose of the product in accordance with the applicable disposal regulations. If possible, dispose of the packaging material in the appropriate recycling waste.

10. Return of old appliances

When returning the product, please use the available recycling and collection points or contact the retailer. They can recycle the product in an environmentally friendly way.

WEEE registration

Under the registration number DE 38269588 we are registered with the Stiftung Elektro-Altgeräte

Register, Nordostpark 72, 90411 Nuremberg registered

Notizen

This image shows a single sheet of white paper with horizontal ruling lines. The lines are evenly spaced and run across the width of the page. There are no margins, text, or other markings on the paper.

