

# CODAworx

## Request for Proposal

This commission opportunity begins with a Request for Qualifications that will expand to a Request for Proposal at a later date for qualified finalists.

---

### TYPE OF ARTWORK

The Rotary Club of Baton Rouge is planning to commission a large-scale exterior artwork to contribute to community vitality and attract visitors.

The intent of this project is to add a signature installation along the Mississippi riverfront that enhances the sense of place associated with the area. The riverfront area in downtown Baton Rouge is undergoing a major redevelopment, and this installation will become the anchor.

The piece should be inviting to automobile, bicycle, bus, and pedestrian traffic from downtown and surrounding areas and viewable day or night. A successful piece will integrate with existing landscape and structures, and take into account the history of the area and its cultural importance to the city of Baton Rouge.

Artists, architects, landscape architects applying for this commission should have experience integrating public art designs into a major public site.

### OBJECTIVES OF WORK

The new, commissioned artwork should:

- become an iconic feature
- contribute to the vitality of the area
- provide an appropriate cultural, geographic, or artistic perspective
- enhance community identity and place
- engage visitors to the area
- relate that the art is a gift to the City of Baton Rouge from the Rotary Club of Baton Rouge in celebration of the Club's Centennial Anniversary

#### RFP at a Glance

**\$340,000**

Commission Opportunity

**Commissioned by**

The Rotary Club of Baton Rouge

**Baton Rouge**

Louisiana

**April 30**

Deadline to submit: 4/30/15

**“A signature installation  
along the Mississippi  
riverfront.”**

Contact: [CODAworx.com](http://CODAworx.com) (608) 467-3040

## GUIDELINES

The work should be **highly visible** in both day and night. Lighting at night will be important. Attracting attention from as far away as the two bridges, as well as from downtown Baton Rouge and from the 85 river cruise boats which will dock several blocks south is critical.

The Mississippi River is huge and powerful. The view up and down the river, and westward, is immense. **The scale of this project** should be reflective of the surroundings. Sunsets are great from this vantage point. Visitors will have 360 degree views of this area: 270 degrees (N, S, and W) of which will be for long distances, with the remaining eastward view of downtown. It can be seen from all over, and **the view** from the art is equally expansive.

The sun in Baton Rouge is powerful from March through October, and especially from June through September. Looking west into the afternoon, the setting sun is almost unbearably hot and overwhelming. Artists/designers/teams must consider whether the goal is for visitors to sit and be comfortable for a time, **providing shade** and rest, or simply arrive, be attracted to the work, and not linger. A combination of both would be very desirable.

It would be desirable if there could be some form of **interactivity** between the visitor and the work. It would also be a plus if there is some form of movement from the work, making it a **kinetic art**, although this is not a critical component.

RFP Guidelines	
<b>VISIBILITY</b>	Some form of <b>seating</b> as a part of the work would be considered important. This could be in an unusual manner, not necessarily a common layout of chairs or benches.
<b>SCALE</b>	
<b>VIEW</b>	The work must be <b>illuminated at night</b> , whether it is flooded by light or the work itself uses lighting as an important aesthetic piece of the art itself. However, it must work equally as an attraction in both day and night settings. Electric power will be available. Low consumption by use of LED lighting should, however, be considered. The existing lights from the site area may be removed, but they must then be replaced with an illumination with an equal or greater intensity.
<b>SHADE</b>	
<b>INTERACTIVE</b>	
<b>SEATING</b>	
<b>ILLUMINATION</b>	
<b>COLLABORATION</b>	A team of designers would be considered desirable to make this a truly <b>collaborative</b> production. This could be a combination of artists, landscape architects, architects, lighting artists/specialists, computer/technical specialists, etc.
<b>KINETIC</b>	
<b>VANDAL PROOF</b>	
<b>ROTARY</b>	
<b>STRUCTURAL</b>	

Unfortunately, consideration must be made as to the vulnerability of the work to abuse by the general public. Something **vandal proof** or easily maintained for general wear and tear is necessary.

The work must be **structurally strong** and capable of withstanding winds of hurricane force either by its basic strength, or as something which can be removed/tied down relatively easily. A structural engineer will likely need to be consulted on the work, and especially on the supporting foundation.

Water will be available, although due to maintenance problems with the use of water, **excessive use of water is discouraged.**

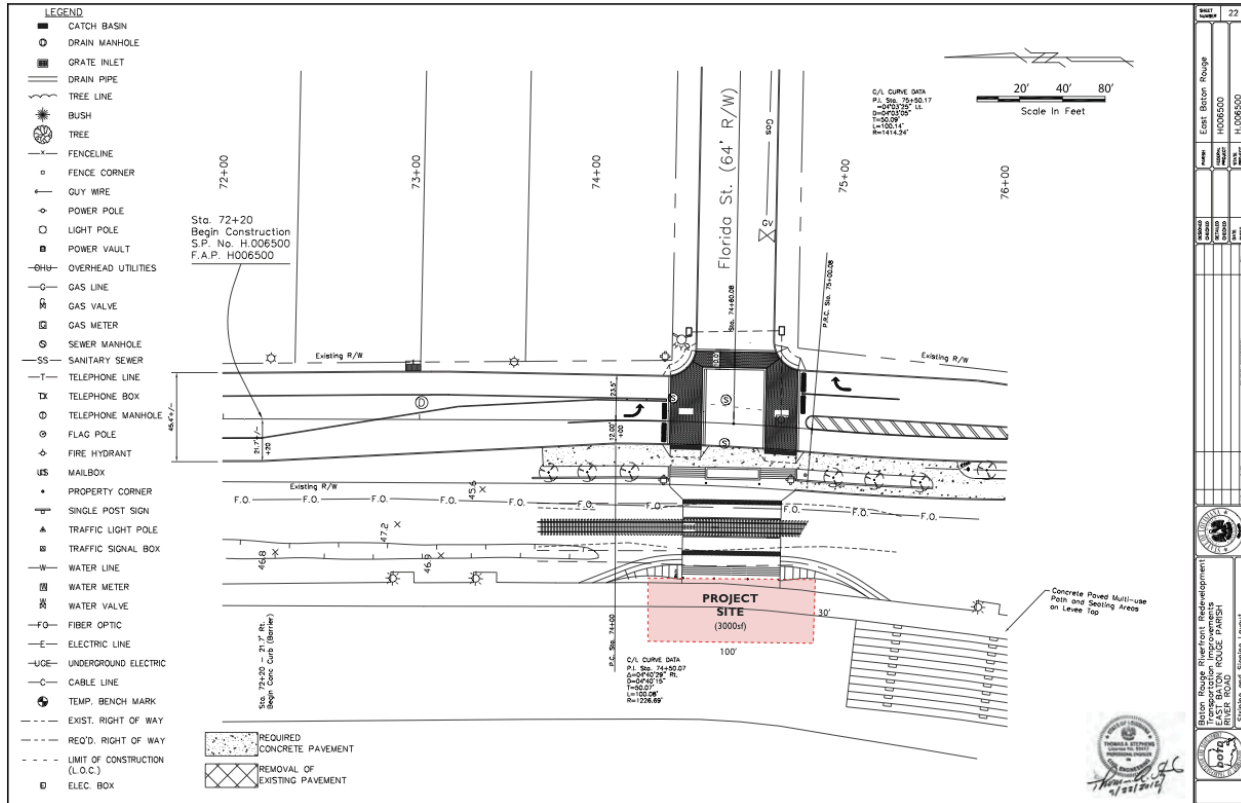
This is a project which is not only a gift to the city, but which celebrates the Centennial Anniversary of the **Rotary Club of Baton Rouge**. The project will be located just a few blocks from the original meeting place of the Club. Further information can be obtained through websites of international Rotary as well as the Rotary Club of Baton Rouge. The implication is not to infer that the work will necessarily be a Rotary “image”, but rather that certain references, even if somewhat abstract, should be included. This should include a listing of major donors (approximately 10) in some non-obtrusive manner.

Approval of the work must be obtained from the Corps of Engineers. The Rotary Club committee and individuals will assist and offer guidelines.

## LOCATION RENDERING



# SITE PLANS



## COMMISSIONING BODY

The Rotary Club of Baton Rouge, a chartered club of Rotary International, is one of the largest of over 30,000 rotary clubs in the world! The Rotary Club of Baton Rouge is comprised of over 500 business and professional leaders from the greater Baton Rouge area.

Since its founding on October 18, 1918, the club has been known for its fellowship and service to the community. Rotary Club of Baton Rouge Foundation, the charitable arm of the club, contributes thousands of dollars to help support projects endorsed by the club.

To learn about the Object of Rotary, the Five Avenues of Service, and other information about the Rotary Club of Baton Rouge, please see [www.rotarybr.org](http://www.rotarybr.org). For more on Rotary International, see [www.rotary.org](http://www.rotary.org).

## CITY OF BATON ROUGE

Baton Rouge is the state capital, a major port of the Mississippi River, home of Louisiana State University and Southern University, and is a vibrant, mid-sized business city. Its architecture and culture are influenced by countries which ruled the territory during its history: France, Great Britain, and Spain. Much is written about Baton Rouge online and elsewhere. The Rotary Club of Baton Rouge and its members have been leaders and closely intertwined in the fabric, growth, and success of Baton Rouge.

## QUALIFICATIONS

Applicants must be art or design industry professionals to qualify. Must be a resident of the United States or Canada, 18 years or older, and with experience in commissioned art. Applicants must include references and have successfully implemented at least 2 major site-specific commissions that were informed by dialogue with a commissioning body. Artists may apply and be considered independently, as part of a team, or both. All qualified artists, designers, architects, and landscape architects are encouraged to apply.

## SELECTION PROCESS

The Selection Committee will review all materials submitted by qualified candidates. Finalists will be selected and interviewed. Proposals may be requested for which an honorarium will be provided. Finalists who are asked to interview in Baton Rouge will also receive a stipend to assist with travel, not to exceed \$1,000. Selection process will occur in 2015. Artwork and installation must be complete by 2018. The project budget is \$340,000.

## TIMELINE

Applications accepted	April 1, 2015
Application deadline	April 30, 2015 – 5 pm CST
Qualified submissions selection	May 15, 2015
Round 1 of finalists selected	June 15, 2015
Interviews conducted remotely	July 15, 2015
Top finalists selected and notified	July 20, 2015
Official proposals due	August 31, 2015
Finalist presentations made on site	September 30, 2015
Artist/team selected	October 15, 2015
Artist/team meet with Corps of Engineers and selection committee; contract signed	by December 31, 2015
Planning and creation of work	2016 and 2017
Installation and completion of work	Official date TBD, 2018

## SUBMISSION INSTRUCTIONS

Interested parties must submit the following materials via email or Dropbox. Please do not include supplemental materials beyond the requirements listed below. Submissions that do not include the below requirements will not be considered.

- Name and contact information
- Professional resume
- List of previous commissions
- Contact info for 3 references
- 1 page letter of interest to include a brief discussion of what you envision for the art
- Up to 5 images of previous site-specific public or private work demonstrating the type of art referenced in the letter of interest:
  - Include a corresponding image list with title, year, medium, and dimensions
  - Artists are welcome to submit images by including links to their CODAworx projects (1 URL = 1 image)

Complete submission must be received on or before Thursday, April 30 at by 5 pm CST.

Email submission materials to:

**Stefanie Dickens**, [stefanie@codaworx.com](mailto:stefanie@codaworx.com)

Commission Services Specialist, CODAworx

Questions may be addressed to the above email or call the CODAworx offices, (608) 467-3040.

---

CODAworx is a global online platform to showcase design projects that feature commissioned artwork in interior, architectural, and public spaces. CODAworx RFP Concierge Service is designed to aid commissioning bodies in the process of promoting Requests for Qualifications and Proposals and to guarantee an applicant pool containing top artists and designers in the industry.

###