

THE ARSENAL PROJECT

Community Outreach Meeting #5 August 31st, 2016

Developer:



Real Estate Management &
Leasing:



Architect:



Civil Engineer:



Transportation Engineers:



Landscape Architect:



THE ARSENAL PROJECT

Community Outreach Meeting #5

August 31, 2016

AGENDA

- Process – Jeff Heidelberg, Boylston Properties
- Transportation – Giles Ham, VAI
- Building Massing – Eric Brown, PCA

RMUD Master Plan Application Process

Indicates formal opportunities for public input

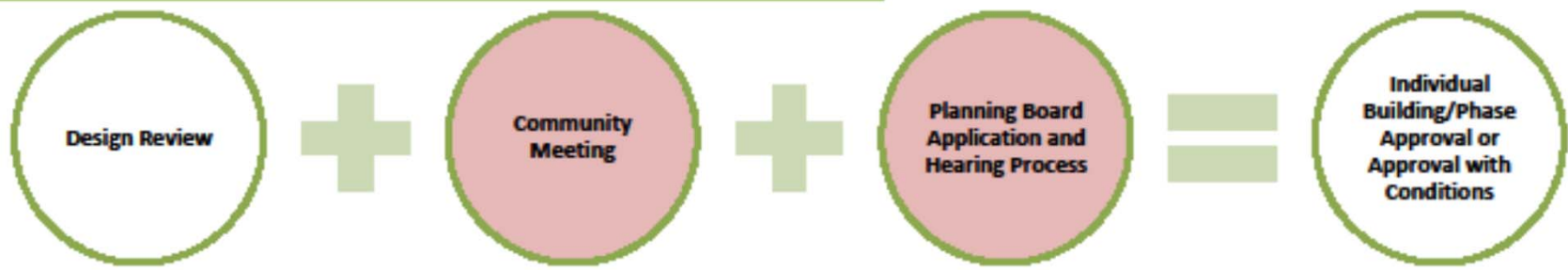
Phase One – Initial Community and Town Review



Phase Two – Master Plan Special Permit (MPSP) Hearing Process



Phase Three – MPSP Phased Site Plan Approval(s)



Study Status

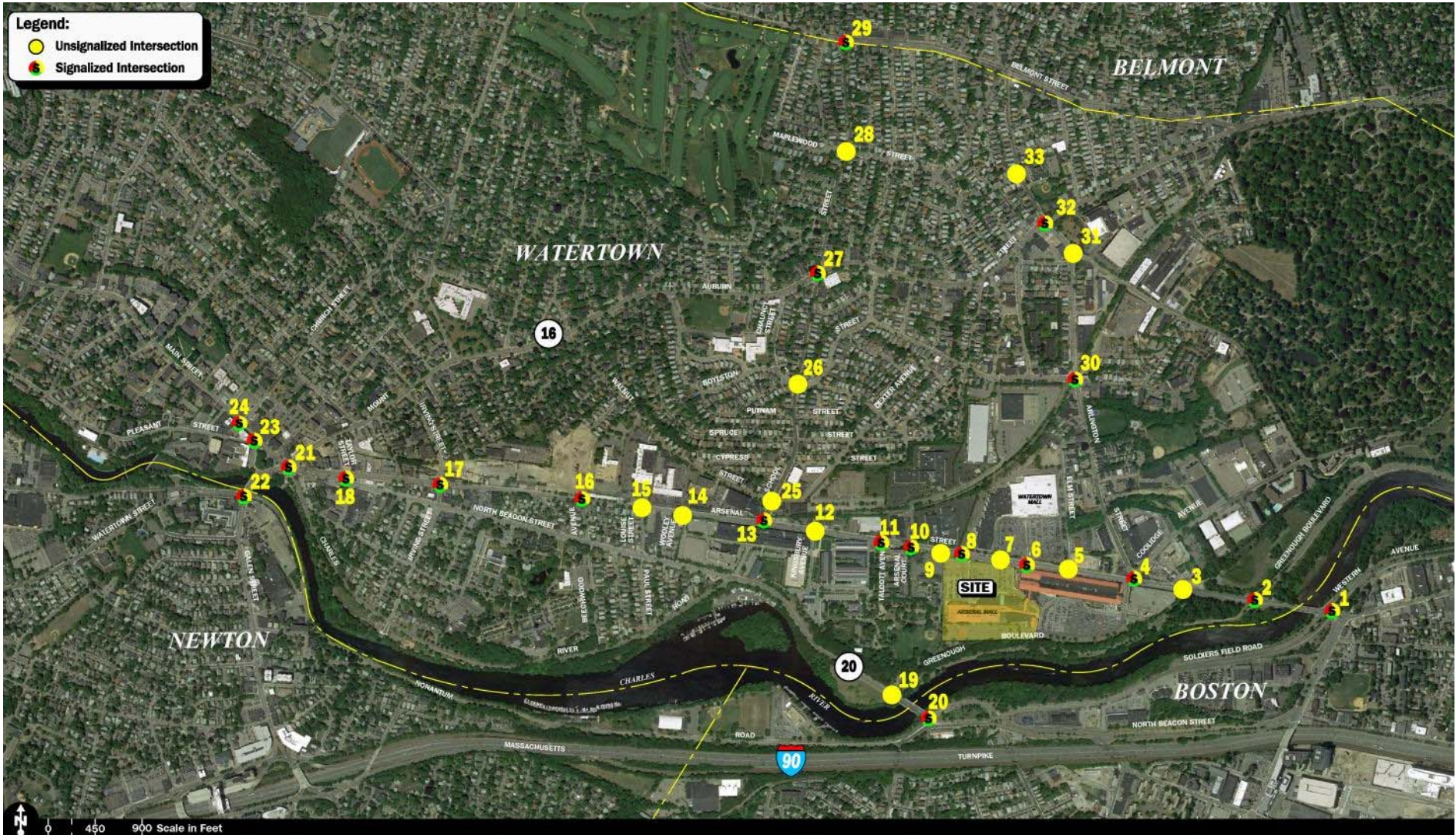
Transportation Impact Assessment

- **Completed in consultation with town**
- **33 intersections**
- **Weekday morning, evening –Saturday
midday, evening conditions**
- **Detailed multi-modal improvement program**

Area Under Significant Study

- **Athena Traffic Study**
- **MassDOT / Town of Watertown – Arsenal Street Corridor Study**
- **MBTA Arsenal Street Study**

Study Area Map



The Arsenal Project – Watertown, Massachusetts

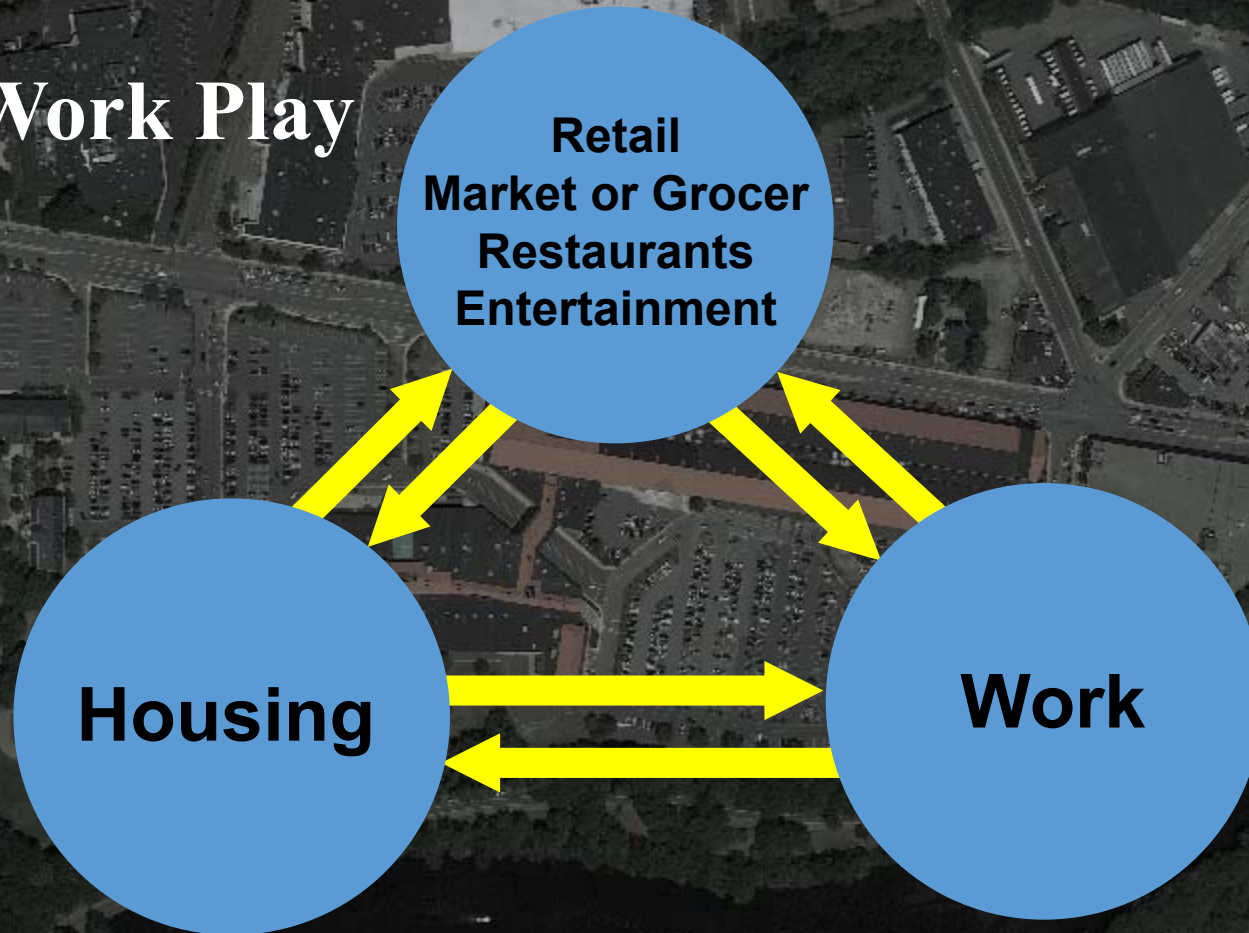
Transportation Impact Assessment

Trip Generation Summary

	Existing Vehicles	Project			Pass-By	Total New Trips
		Residential	Retail	Total		
Weekday Daily	18,328	3,154	5,658	8,812	-2,446	6,366
Weekday Morning:						
Entering	367	45	23	68	-9	59
Exiting	229	179	15	194	-9	185
Total	596	224	38	262	-18	244
Weekday Evening:						
Entering	456	116	298	414	-61	353
Exiting	598	43	210	253	-61	192
Total	1,054	159	508	667	-122	545
Saturday Daily	22,168	3,375	9,651	13,026	-2,378	10,648
Saturday Midday:						
Entering	817	84	277	361	-65	296
Exiting	722	51	222	273	-65	208
Total	1,539	135	499	634	-130	504
Saturday Evening:						
Entering	436	46	366	412	-61	351
Exiting	505	31	383	414	-61	353
Total	941	77	749	826	-122	704

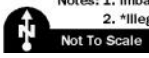
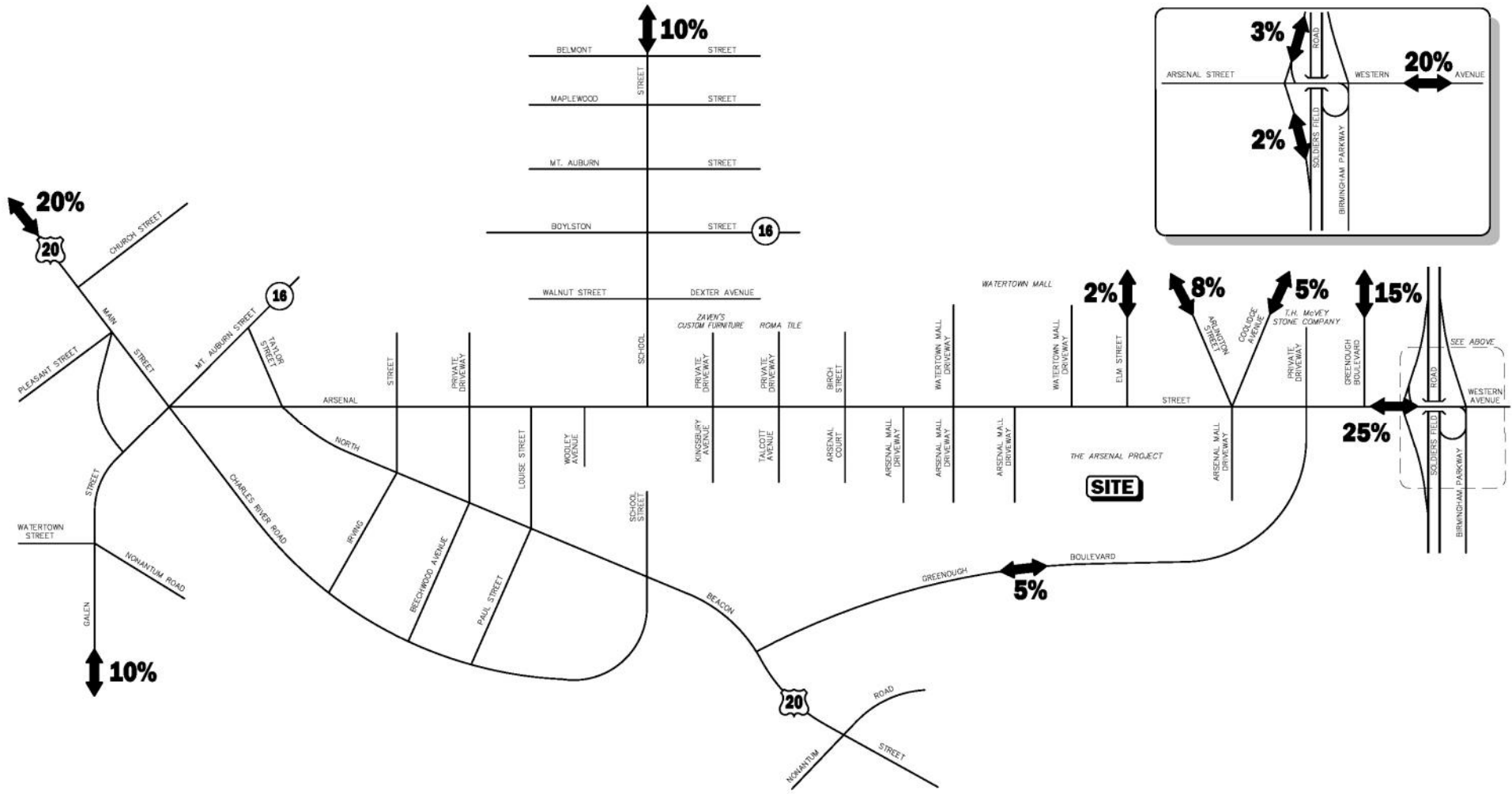
On Site Efficiency

Live Work Play



Internal Capture of Trips

Trip Distribution Map (Retail)



Transportation Demand Management (TDM)

Establishes Clear Goals for Non-SOV Travel

- **15 % Non-SOV for overall Campus**

TDM Plan

- **Join local TMA**
- **MBTA Charlie Card Kiosk**
- **Post MBTA schedules**
- **Encourage transit schedules**
- **Hubway Bike Sharing Station – reserved area**
- **Weather protected bicycle parking spaces**
- **Bicycle and pedestrian maps**
- **Carpool/vanpool parking**
- **Zip cars**
- **Electric car charging station**
- **Residents welcome package**
 - **One month MBTA pass**

Monitoring

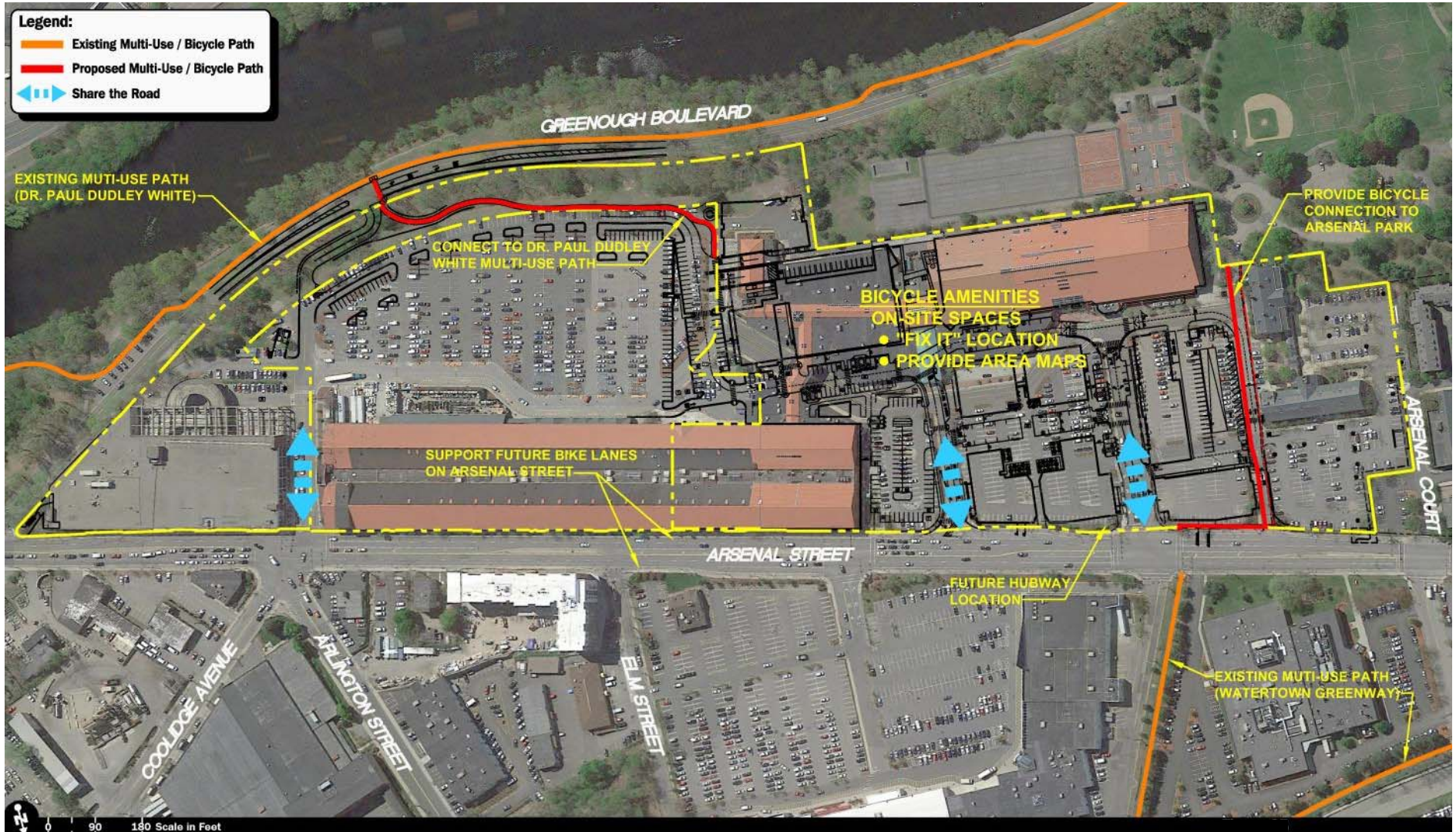
- ***Annual monitoring***
- ***Traffic***
- ***Parking***
- ***Reports to town***

Route 128 Business Council

Watertown TMA

- **Shuttle Services**
 - **Shuttle Alerts**
 - **Shuttle Tracker**
- **Emergency Ride Home Program**
- **Ride Matching Program**
- **Carpool / Vanpool Matching**
- **Bicycle / Walk Support Resources**
- **Bicycle Repair Discounts**
- **Membership Discounts**
- **Newsletter**

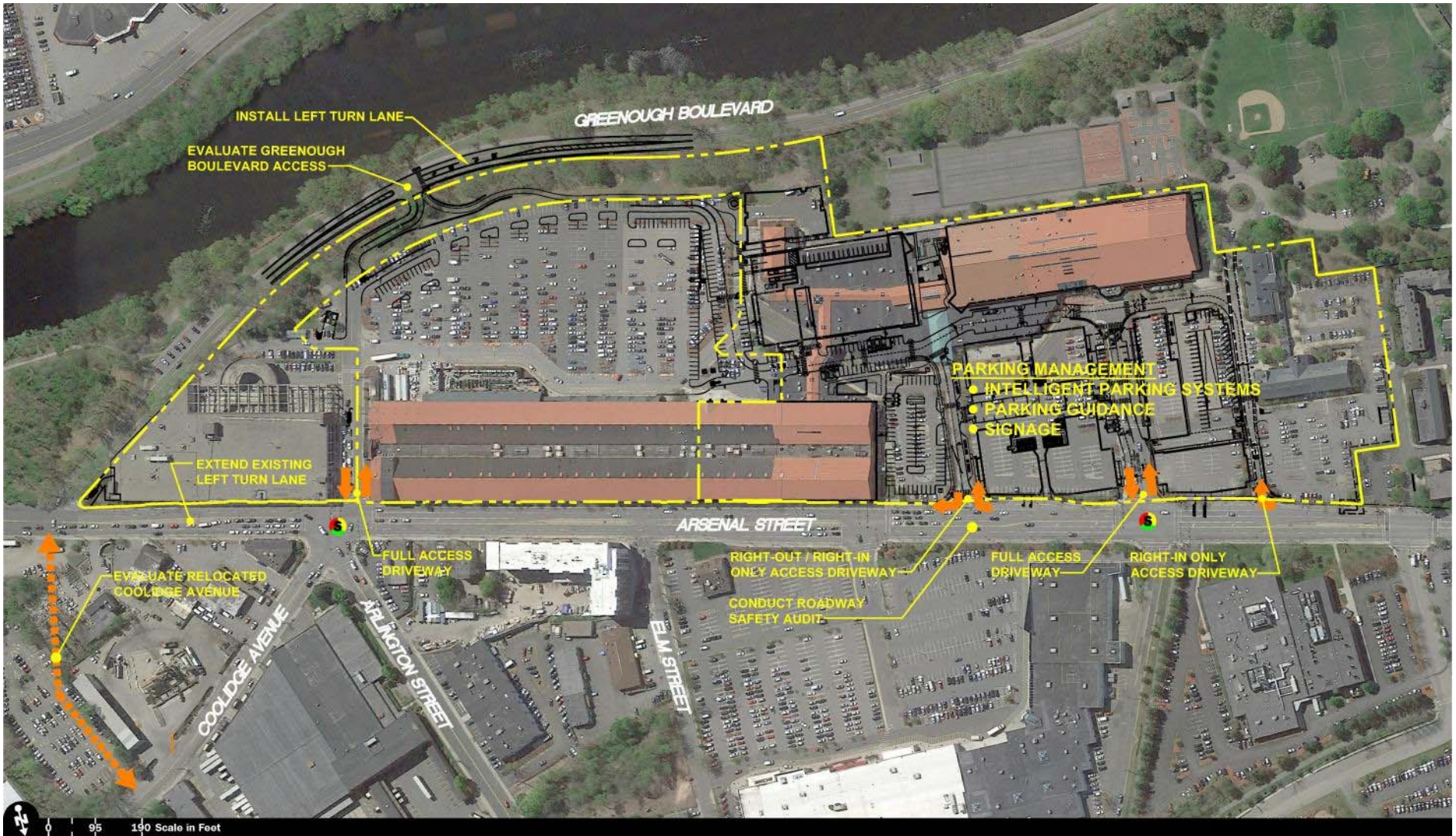
Bicycle Facilities Improvements



Pedestrian Facilities Improvements



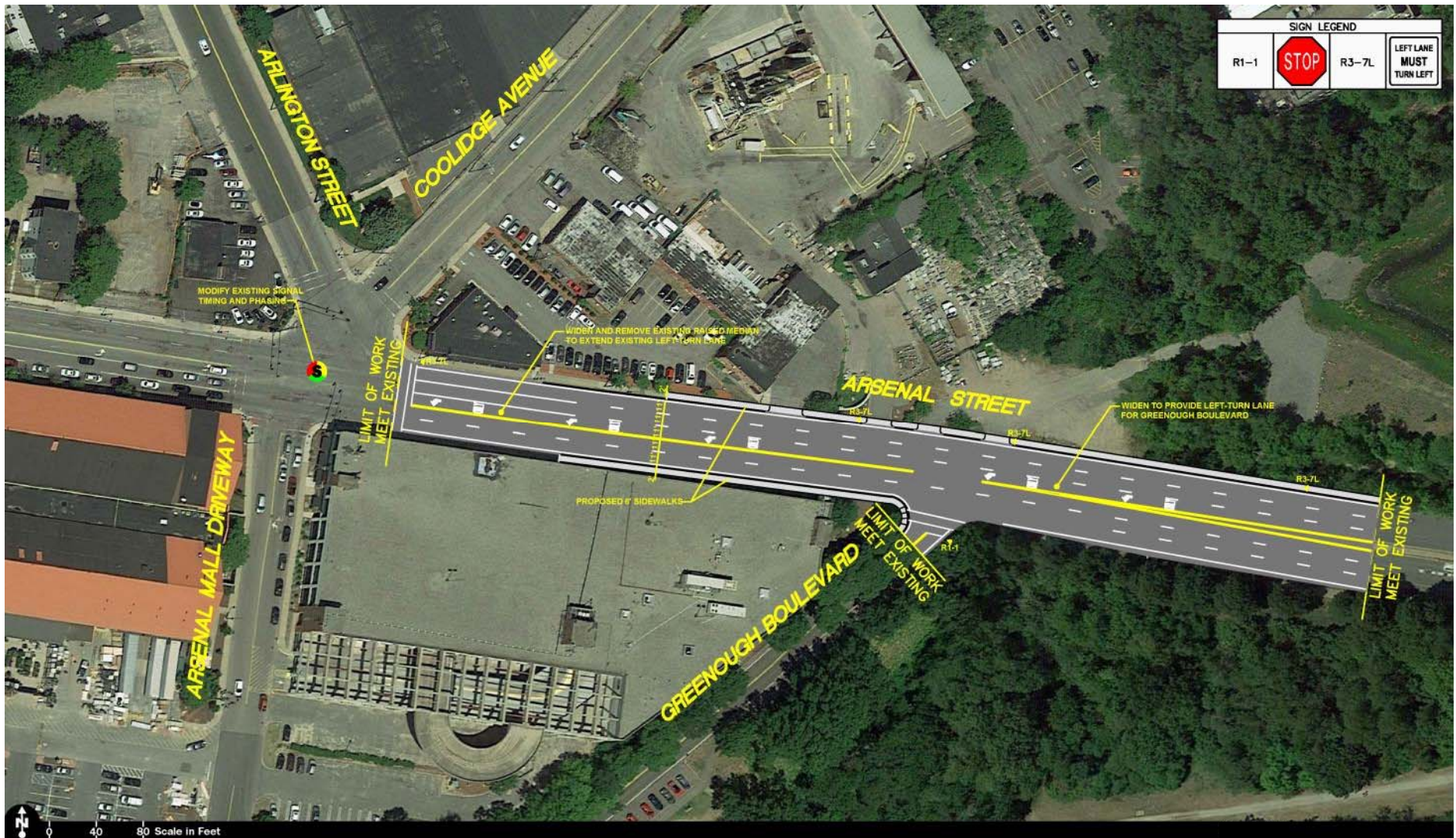
Site Access / Mitigation



The Arsenal Project – Watertown, Massachusetts

Transportation Impact Assessment

Conceptual Improvement Plan



The Arsenal Project – Watertown, Massachusetts

Transportation Impact Assessment

Conceptual Improvement Plan

SIGN LEGEND	
R1-1	
R3-7L	
W11-2	
W16-7P	