

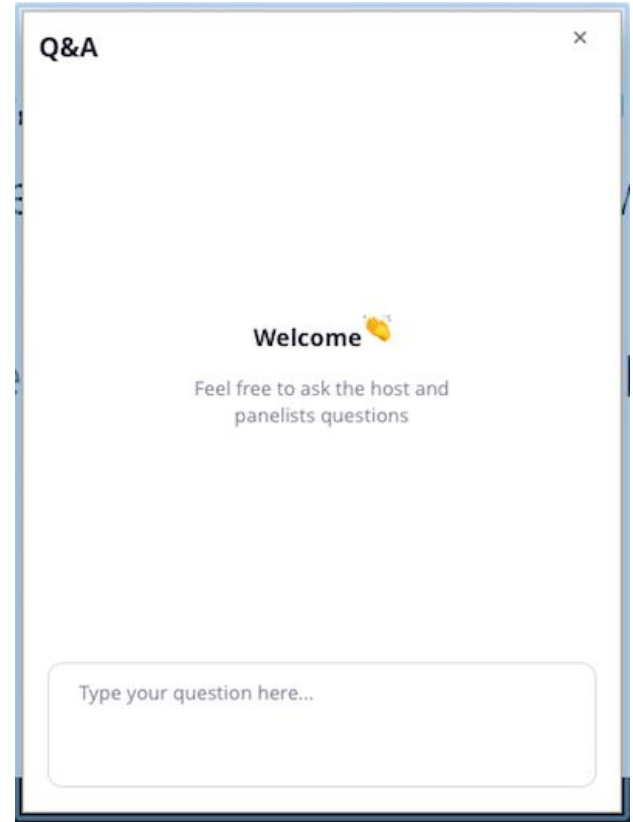
A Conversation With Ford

Community Meeting

June 25, 2020

Session Will Begin Promptly At 6:00 PM...

- Welcome to today's **Zoom Webinar**.
- Presenters **will appear on screen** along with the slides they're sharing.
- Attendees **will not appear on screen** and do not have audio capabilities.
- Questions are great! Please share them by typing them in the **Q+A feature**.
- Content from today will be available to session participants via **Facebook and the Michigan Central website**.
- A **poll will appear** later in the session, and will provide instructions at that time.



Mary Culler

Welcome & Project Updates

Rich Bardelli

Construction & Workforce Development Updates

Pamela Alexander
James Courtney

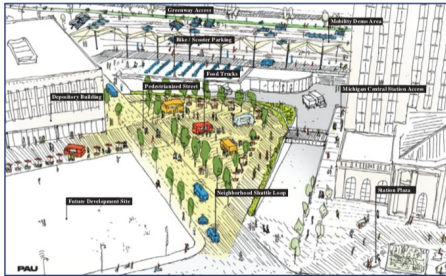
Community Engagement

Julie Roscini

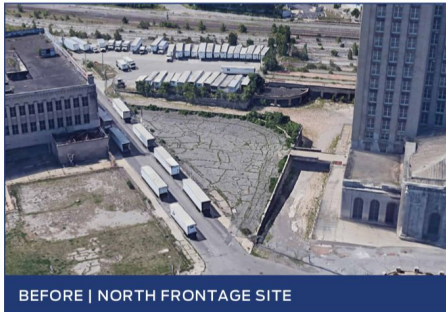
Q+A



How might we re-imagine the North Frontage from surface parking to active public spaces?



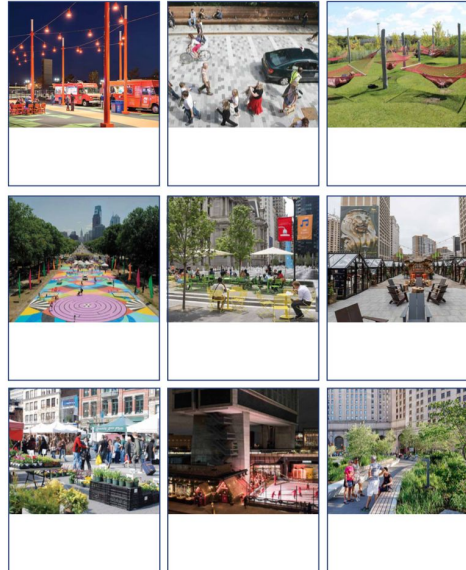
AFTER | CONCEPT



BEFORE | NORTH FRONTAGE SITE

WHAT COULD BE

Place stickers on the top 3 images you like



What else should we consider for the North Frontage?

Please use **post-it notes** to leave your responses to the question(s) below:



Michigan Central Vision

- A mobility innovation district anchored by Michigan Central Station.
- A launchpad to create, develop, and test innovative solutions to solve tomorrow's transportation challenges in an open, real-world setting.
- A place that is authentically Detroit, invites in the community, and supports diverse and equitable uses.
- A location that will preserve the area's unique character and historic structures while introducing new forms that respect local heritage.
- A platform for partnerships that bring opportunities, sustainability, and vitality to the area.





THE FACTORY

THE BOOK DEPOSITORY

PARKING DECK 1

MICHIGAN CENTRAL
STATION

SITE FOR THIRD BUILDING &
POTENTIAL SITE FOR PARKING DECK 2

MOBILITY PLATFORM
& SHARED SPACES

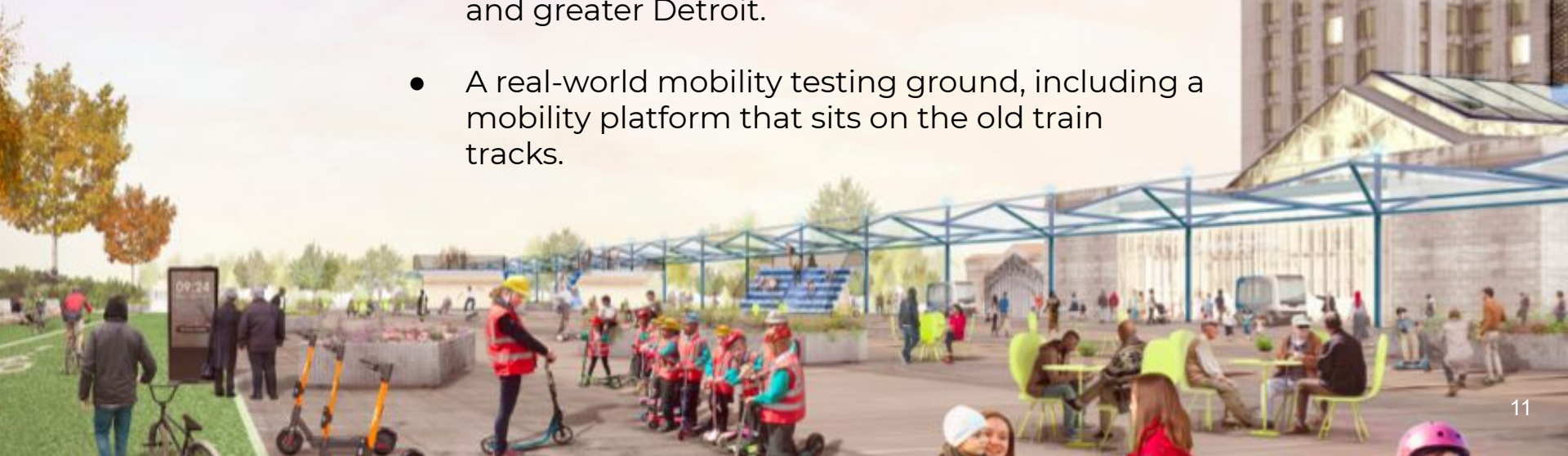


- Building three will further create density around Michigan Central Station.
- It will be located west of the train station.
- Design phase of the building will begin in the subsequent months.
- Expect the building to be completed by the end of 2023.





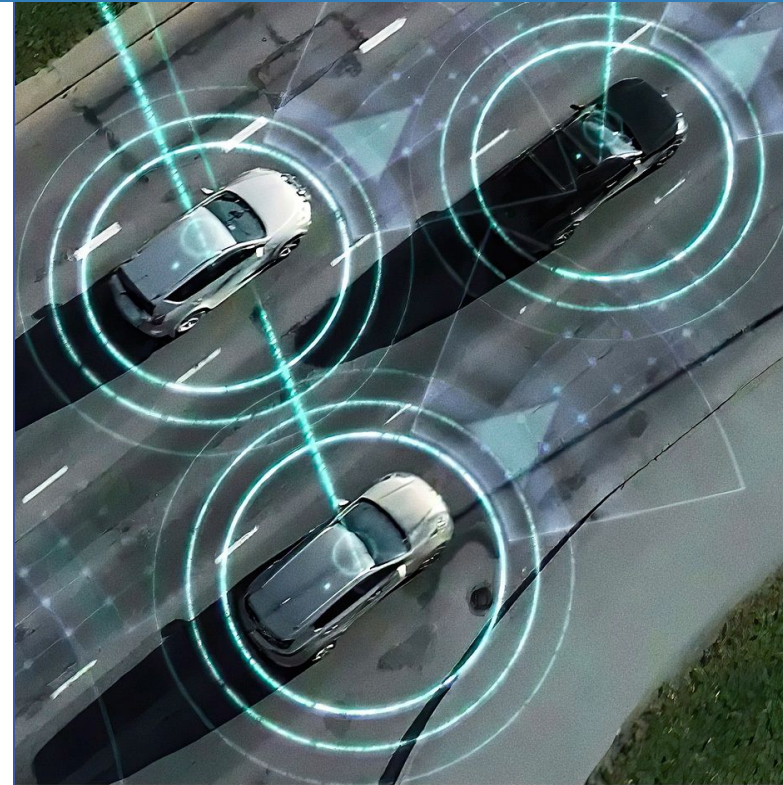
- Michigan Central will be part of the fabric of the neighborhood.
- Accessible from all directions.
- Connects to other public spaces throughout the city, such as the Roosevelt Park, the future greenway, Ralph C. Wilson, Jr. Centennial Park, and greater Detroit.
- A real-world mobility testing ground, including a mobility platform that sits on the old train tracks.



- Create an ecosystem that includes:
 - Start-ups
 - Non-profits
 - Community
 - Arts and culture
 - Education
 - Restaurants and retail
 - Large and small businesses
 - Foundations
 - Investors
- Test new technologies and solutions in an open setting will allow us to take on the world's toughest transportation challenges.



- Michigan Central is collaborating with Newlab, a collaborative hub for innovators and entrepreneurs.
- Launching two studios - a civic studio and a corporate studio - to concentrate on macro mobility issues and grow the local startup ecosystem.
- Civic studio will put the community front and center.
 - Focus on key social issues like accessible transportation.
- Hosting a “Fireside Chat” tomorrow for Detroit Startup Week with Newlab. Details below:
 - **Date:** Friday, June 26th
 - **Time:** 2:00 PM
 - **<https://detroitstartupweek.heysummit.com/>**



_NEWLAB





MICHIGAN CENTRAL



Michigan Central Station

The Factory

The Triangle

Parking Deck 1

Station Plaza

The Book Depository

Roosevelt Park Owned By The
City Of Detroit

Future Greenway Owned By
The Riverfront Conservancy

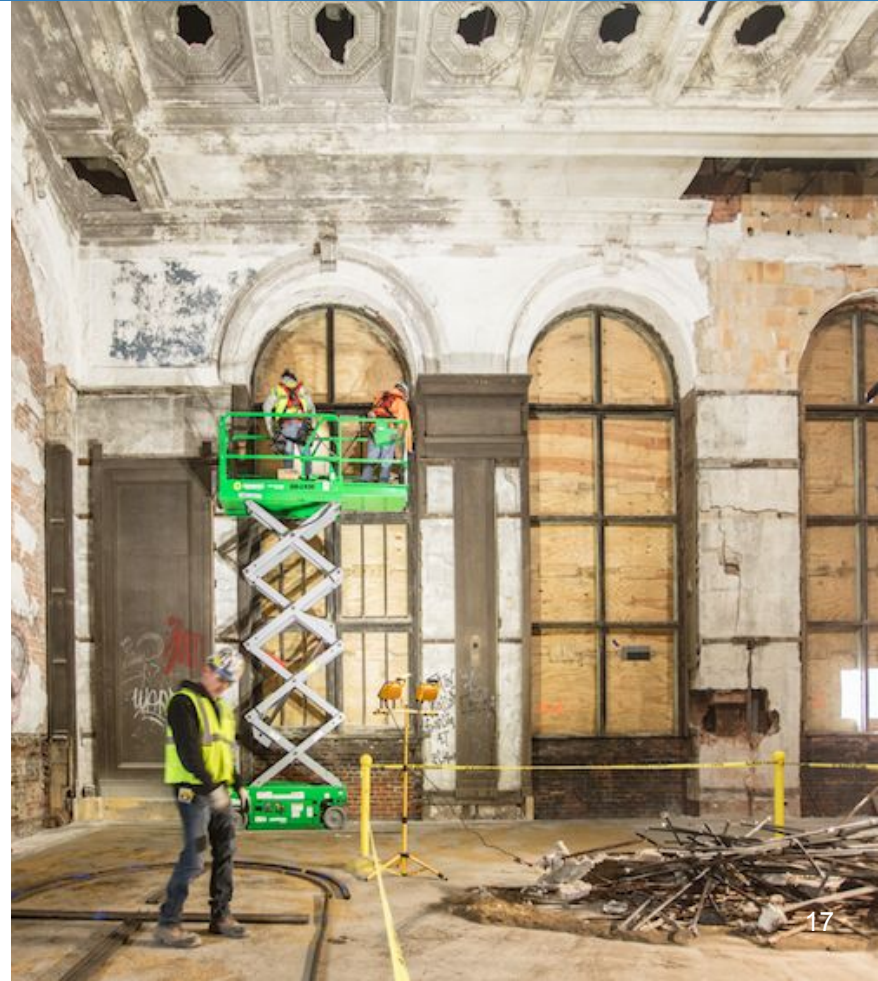
Location Of Third Building
& Potential Site Of Parking
Deck 2

Mobility Platform &
Shared Spaces

Construction Updates

Michigan Central Station

- Phase two of the restoration.
- Longest, most labor-intensive phase.
- Involves fixing the steel structure and repairing the masonry.
- Cleaning and repairing the exterior brick and terra cotta.
- Replacing nearly 300 limestone blocks.
- Interior demolition work will continue as well as carpentry, roof installations, and repairs on the steel structure.





Workers above Waiting Room vaults assessing structural repair mockup location.



Structural engineer with masonry restoration contractor above Waiting Room vaults.







*Tower brick replacement,
north elevation west corner.*



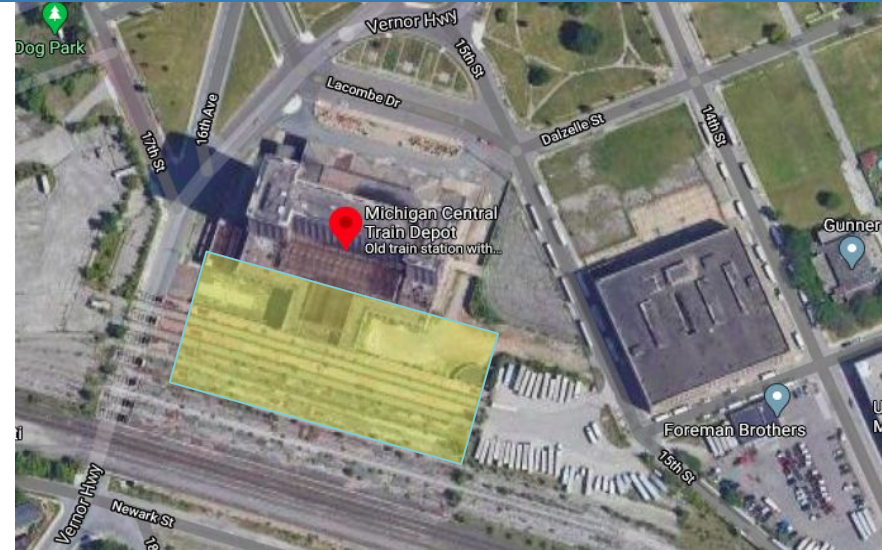
*Tower brick replacement,
northwest corner.*



*Tower brick replacement,
southwest corner.*

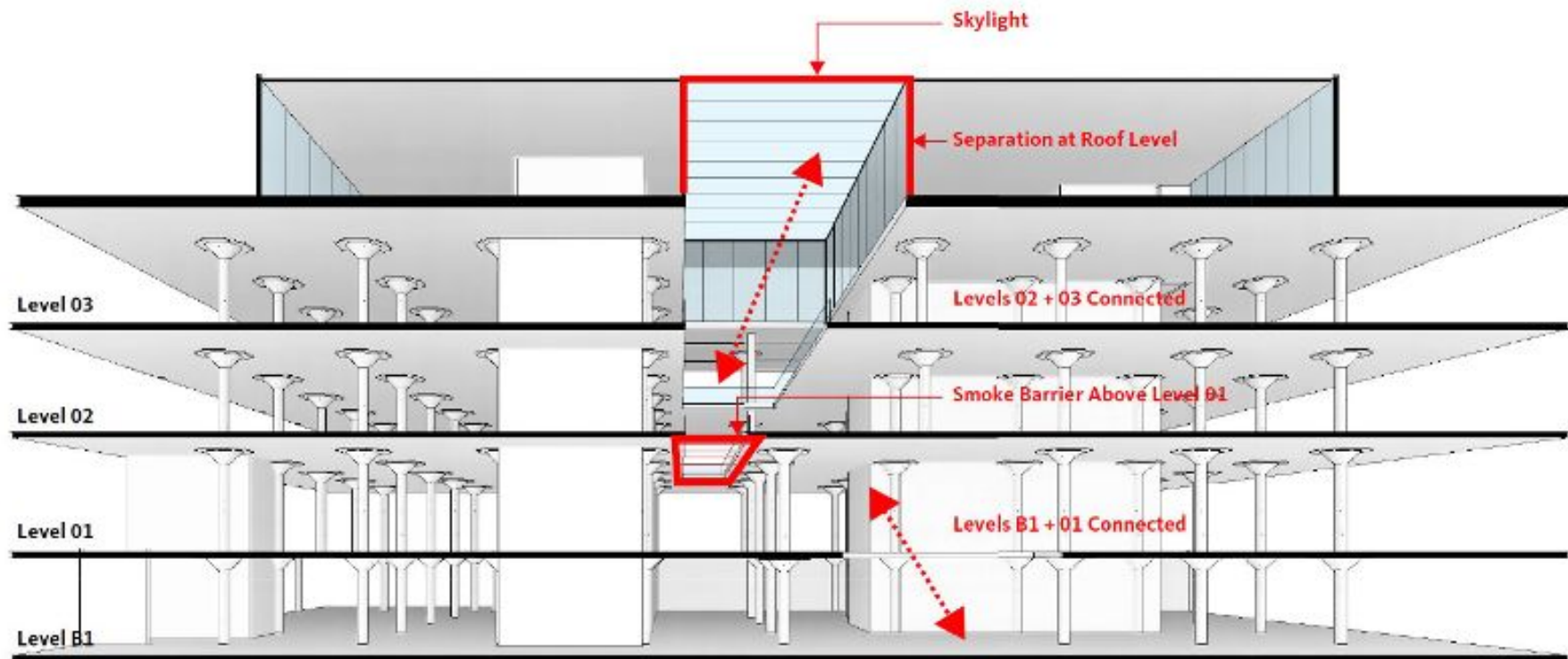


- Cleaning and demolishing all existing walls.
- Remediate all regulated material to stop environmental damage.
- Environmental Protection Plan (EPP) in place during construction.
 - Same as Brass Factory demolition plan.
 - Air quality will be monitored daily.
 - Website will be updated with information.
 - Not anticipating any impact to local traffic.
- **Demolition Hotline:** 248-848-3931
- Remediation will take place from July through September.



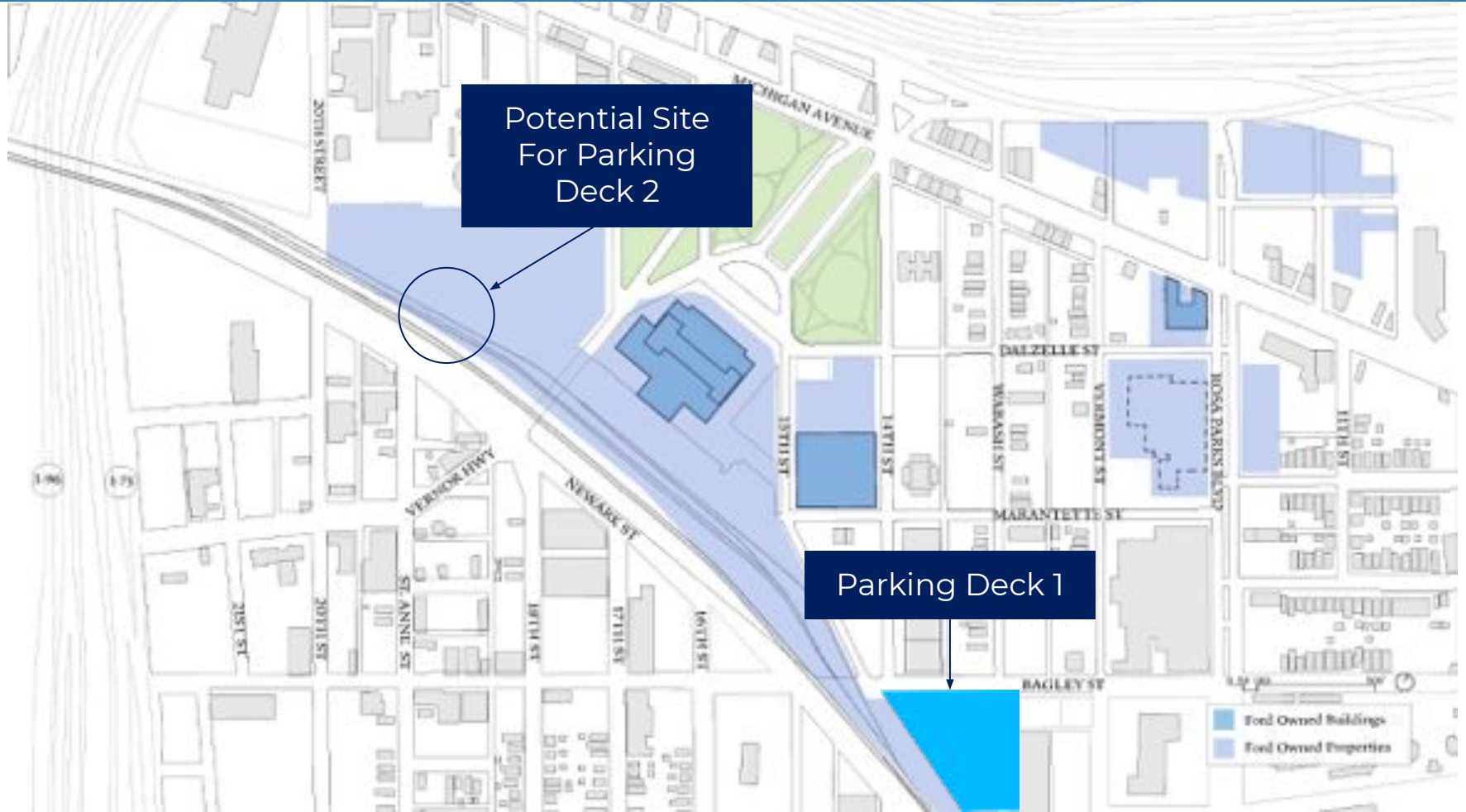
- Pre-construction abatement work is almost done.
- Design work continues to progress well.
 - We'll have rendered images to share later this year.
- Full construction will start early next year.
 - Delayed 6 months due to COVID-19.
- Expect building to be finished in the first quarter of 2022.



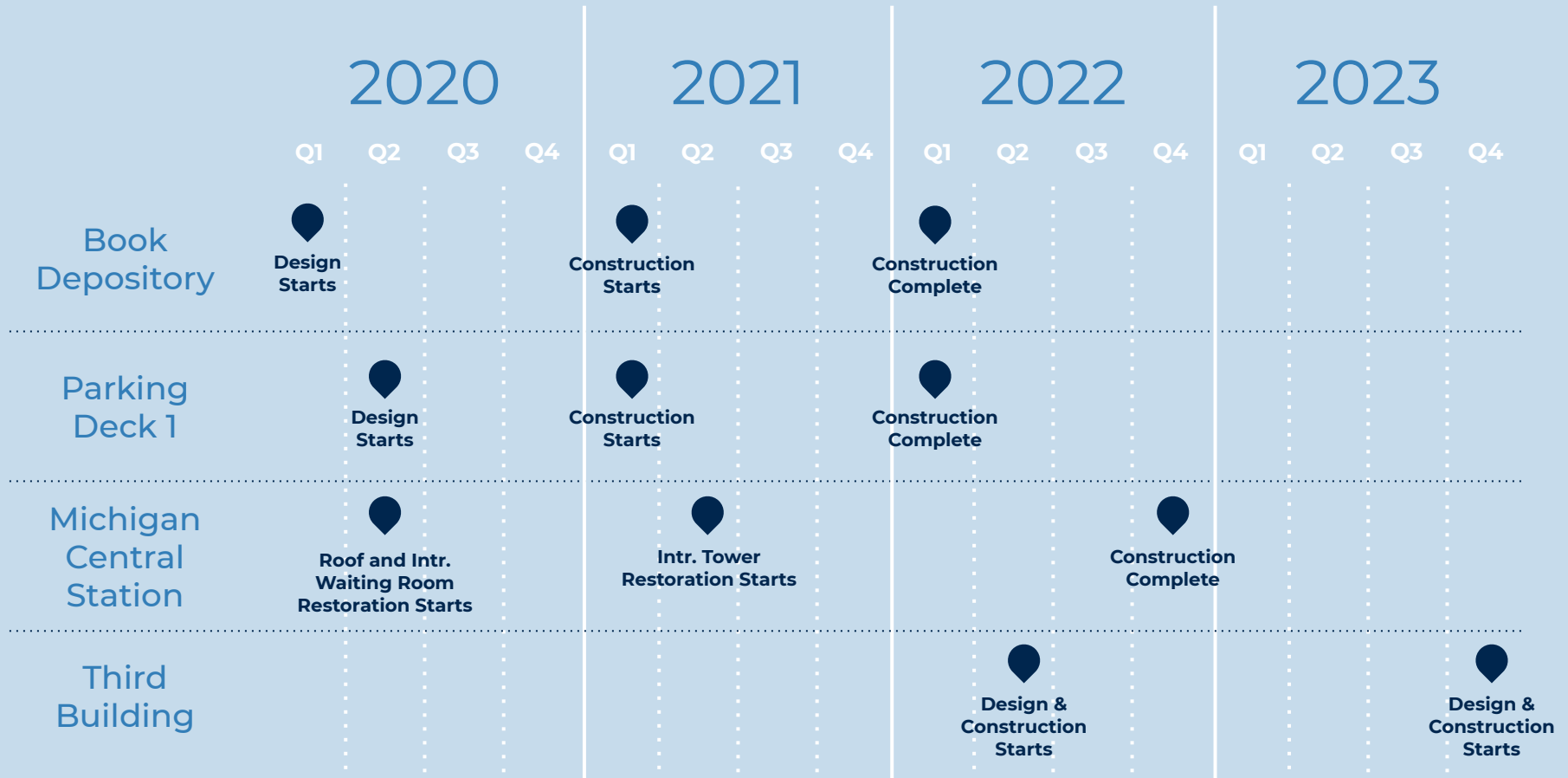








Updated Timeline



Workforce Development

- Leveraging existing training, through the Workforce Development Institute, Michigan Building Construction Trades and Detroit at Work.
- Programs will identify a cohort of 25 individuals from residents who live in the impact area.
- Individuals selected for the 4-month program will be compensated and receive wrap-around support.
- Information session took place on February 29, 2020.
- If you are interested, please go to **DetroitAtWork.com** for more information on how to enroll.



2020

2021

July 6

DETROIT AT WORK

Register & enroll
to ensure training
is complete to join
second COHORT

September 8

**FIRST COHORT
BEGINS WORK**

August 24

NOTIFY CANDIDATES

First COHORT will be chosen from applicants that have gone through the *Access for All* program and the *Michigan Building and Construction Trades Apprentice Program*. First consideration will be given to applicants from the Impact Zone.

January 15

**FIRST COHORT
COMPLETED**

**SECOND COHORT
ANNOUNCED**

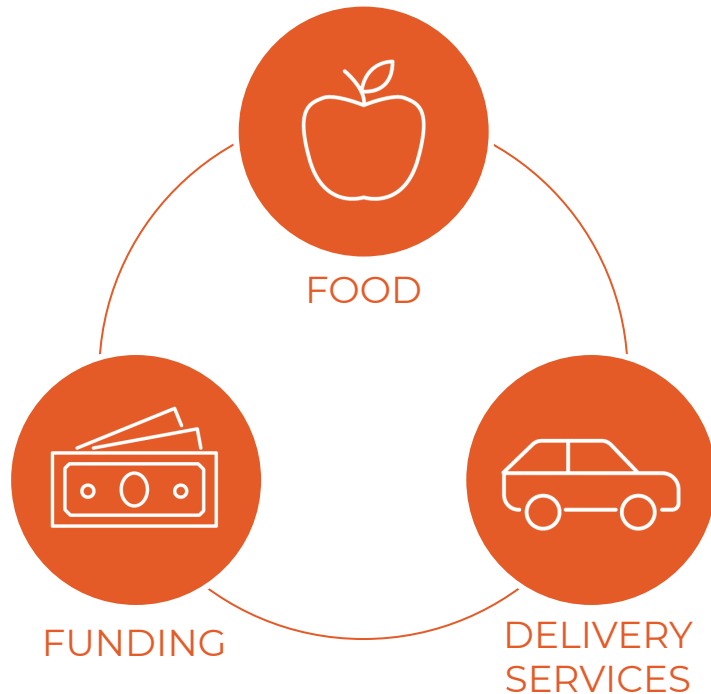
February 9

**SECOND COHORT
BEGINS WORK**

- Michigan Central is supporting GDYT with a \$1M commitment.
 - \$500K this year; \$500K in subsequent years.
 - Part of the CBO agreement.
- In 2020, this funding supports 312 paid summer internships.
- 12 Michigan Central-supported interns will go into the RAM masonry program at the Michigan Central development. The remaining 300 will have paid virtual internship experiences.
- Of the 300 virtual internships sponsored by Michigan Central, 272 youth (90%) are from the impact area.



Community Engagement

Ford Fund COVID-19 Response: [SE Michigan](#)

DELIVERY SERVICES

300+

TRIPS COMPLETED THROUGH FORD AND LINCOLN MOBILITY SOLUTIONS

1,600+Food Boxes
Distributed**98**

PPE Deliveries

3,750Pope Francis
Meals Provided**11,000+**Corktown
Restaurant Meals
Delivered To Henry
Ford Health
Care Workers**5,000**Face Shields
Delivered To Detroit
First Responders**39**Trips To The
Salvation Army Of
Cleaning Supplies**60**Free SW Detroit
Restaurant
Deliveries To Local
Residents

Ford Fund COVID-19 Response: [SE Michigan](#) *continued*

FOOD DISTRIBUTION

300,000+

POUNDS OF FOOD DISTRIBUTED
IN SOUTHEAST MICHIGAN

Distributed through FREC curbside and delivery
food pantry

Food boxes and fresh
produce provided to:

- Vista Maria
- Alternatives for Girls
- Matrix Human Services



FUNDING

\$500,000+

INITIAL EMERGENCY
GRANTS

Funding provided to:

- United Way for Southeast Michigan
- Gleaners Community Food Bank
- Cass Community Social Services
- Detroit Rescue Mission Ministries
- Focus: HOPE

BLUE OVAL COVID 19
MATCHING GRANT
PROGRAM

Funding provided to:

- Pope Francis Center
- Gleaners
- United Way
- Children's Center
- Salvation Army of SE Michigan
- Detroit Historical Society



- Reopened for essential services Monday, June 22.
 - Appointment only
- Fresh Market Pantry by Mercado Food Hub started on June 18.
 - Every Thursday
 - 5:00 PM - 7:00 PM
 - No appointment needed
 - 194 households were served on the first day - a total of 14,550 lbs of food distributed.
- FREC Southwest is located at 2826 Bagley Street.
 - For more information please go to the website:
www.fordfund.org/FRECSouthwest
 - **Contact Number:** 313-962-4888
 - **Email:** cmattia@gcfb.com

INTRODUCING...

**fresh
market
pantry**
by Mercado Food Hub

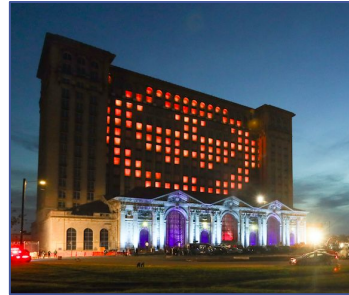
EVERY THURSDAY, BEGINNING JUNE 18
5:00PM - 7:00PM | No appointment needed
Open to the community | Drive thru or walk up



- We are eager to celebrate with our neighbors, but understand that planned events may not occur due to state guidelines around in-person gatherings.
- Michigan Central and the FREC Southwest plan to be involved with the following events in 2020, if safety guidelines allow:



Tour De Troit
September 2020



Halloween
October 2020



Corktown Aglow
December 2020

- Due to COVID-19, the Information Center is closed until further notice.
- Michigan Central updates provided by exterior graphics and digital signage.
- We will have updated programming when the space reopens. Potential ideas include:
 - Block clubs
 - Neighborhood meetings
 - Listening & learning sessions around Michigan Central
 - Select engagements for local artists to display their work
 - Short term pop-ups for local businesses



- The City:One Challenge focuses on developing new mobility designs and innovations to improve the way people get around.
- 15% of proposals came from the Michigan Central impact area.
- Three pilot winners were announced in January 2020 and will split \$250,000 to test their ideas.
 - Mercy Education Project
 - AbleLink Smart Living Technologies
 - Detroit artists, DTE and Downtown Detroit Partnership



- In our CBO agreement, we have funds of \$2 million related to workforce and community identified programs.
 - In 2019, \$250,000 to celebrate Culture and Heritage.
- We had originally planned for our 2020 funds to be dedicated to entrepreneurship. However, we are pivoting to support the current environment. We want your input on how to allocate this year's \$250,000 grant.
- Poll instructions:
 - A poll will appear on your screen.
 - Please participate by selecting your top priority funding opportunity.
 - Press submit.
- Results from this poll are not inclusive of the other session. Please note final results will not be calculated until after the 6 PM session.

1. Where should CBO community grant funding be directed this year to bring the most benefit to the largest number of residents/businesses?

- ☐ Youth Education
- ☐ Entrepreneurship and Small Business Support
- ☐ Transportation Access and Connections Across Neighborhoods
- ☐ Access to Internet and Digital Services



Website

michigancentral.ford.com



Information Center

1907 Michigan Ave



FREC

2826 Bagley St



Newsletters

Door-To-Door & Digitally



Email

Corktown@ford.com



Phone

313-845-3673



*Facebook

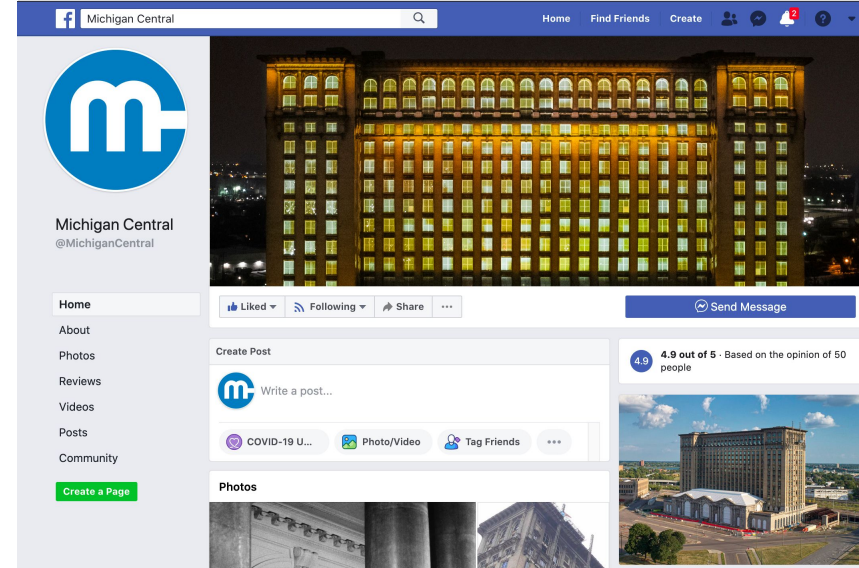
facebook.com/michigancentral



*Listening & Learning Sessions

Virtual Sessions

- Michigan Central Station Preservation Society's Facebook page is now the official page of the development.
- The group was created in 2009 as a grassroots effort to save the station from demolition.
- They connected people interested in saving the station and generated an electronic petition with 3,000+ signatures.
- 11,000 community members follow the page.
- Follow us for updates on Michigan Central
www.facebook.com/michigancentral





MICHIGAN CENTRAL

Q+A

What's On Your Mind?



MICHIGAN CENTRAL

THANK YOU!

We Are Excited To Build
The Future With You.