

# CPS<sup>®</sup> Automotive

*Built by technicians, for technicians*





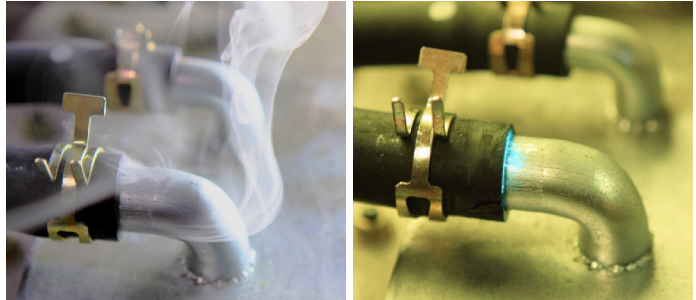
**#WV604**

One-button operation finds leaks with smoke and dye

**VACUTEC® LEAKFINDER®**

*Diagnostic Smoke® and UltraTraceUV® Dye*

Vacutec® Leakfinder is the simplest and quickest way to find low-pressure leaks in multiple vehicle systems. Its patented technology was designed in collaboration with multiple major OEMs to establish a standard for leak detection. Designed safe for all vehicle systems, the use will not void factory warranties and is OEM APPROVED. It is the only smoke technology in the world that meets SAE INTERNATIONAL safety standard recommendations.



***The world's best selling smoke technology – in more workbays than all competitors combined!***

**WV604 & WV605 Feature:**

- Smoke test with the ONLY OEM approved non-contaminating and non-permanent smoke solution with UltraTraceUV dye (the smoke that won't stink!)
- Includes additional Free user-refillable UltraTraceUV dye, good for hundreds of tests
- Operates with shop air for general purpose testing (e.g. vacuum, exhaust, wind & water leaks etc.), or inert gas for safer EVAP testing
- Automatic electronic safety valve shuts off air flow into vehicle's EVAP system when machine turns off, preventing gasoline fumes continually exiting the EVAP system and filling your work bay
- Auto-correct EVAP pressure setting; non-adjustable to avoid accidental over-pressure
- Approved for Flex-Fuel vehicle testing
- 1 Year Warranty



**#WV605**

Finds leaks with smoke and dye. Accurate flow meter measures leak size. 'Test' mode and smoke flow control.

**WV605 Features:**

- Full range flow meter detects: gross (.080") small (.040") and very small (.020") leaks. Capable of detecting leaks smaller than .010"
- Non-smoke 'Test' mode (in addition to smoke mode)
- Smoke Flow Volume Control



#WV608

## VACUTEC® LEAKFINDER®

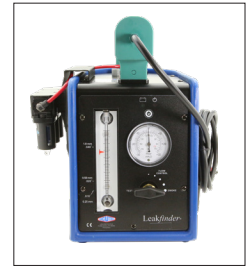
*Diagnostic Smoke® and UltraTraceUV® Dye*

The WV608 allows you to vacuum-decay test to verify leaks when it cannot be verified using pressure. Also performs pressure-decay tests.

### Features

- Test with or without smoke
- Smoke Volume Control
- Utilizes OEM-approved STAR Technology
- Can connect right to tire inflation nitrogen generator
- Basic EVAP and general purpose applications
- Works with nitrogen or shop air to meet all OEM test requirements
- Full range flow meter covers all EVAP leak ranges: from .080" down to .010"
- Includes two solution bottles, enough for about 600 cycle tests
- User refillable

#WV608



Can also be purchased with Nitrogen Generator  
**#WV608N**

	WV604	WV605	WV608	WV711-PLUS
Operates with shop air for general purpose testing (e.g. vacuum, exhaust, wind & water leaks etc.), or inert gas for safer EVAP testing	<input checked="" type="checkbox"/>	<input checked="" type="checkbox"/>	<input checked="" type="checkbox"/>	<input checked="" type="checkbox"/>
Electronic safety valve automatically shuts off air flow into vehicle's EVAP system when machine turns off, preventing gasoline fumes continually exiting the EVAP system and filling your work bay (machine is on a 5 minute timer)	<input checked="" type="checkbox"/>	<input checked="" type="checkbox"/>	<input checked="" type="checkbox"/>	<input checked="" type="checkbox"/>
Auto-correct EVAP pressure setting; non-adjustable to avoid accidental over-pressure	<input checked="" type="checkbox"/>	<input checked="" type="checkbox"/>	<input checked="" type="checkbox"/>	<input checked="" type="checkbox"/>
Approved for Flex-Fuel vehicle testing	<input checked="" type="checkbox"/>	<input checked="" type="checkbox"/>	<input checked="" type="checkbox"/>	<input checked="" type="checkbox"/>
Full range flow meter detects: gross (.080") small (.040") and very small (.020") leaks. Capable of detecting leaks smaller than .010"		<input checked="" type="checkbox"/>	<input checked="" type="checkbox"/>	<input checked="" type="checkbox"/>
Non-smoke 'Test' mode (in addition to smoke mode)		<input checked="" type="checkbox"/>	<input checked="" type="checkbox"/>	<input checked="" type="checkbox"/>
Smoke Flow Volume Control (Automatic with WV711 series testers)		<input checked="" type="checkbox"/>	<input checked="" type="checkbox"/>	<input checked="" type="checkbox"/>
Pulsing Low Flow Selection in EVAP mode to reduce smoke flow				<input checked="" type="checkbox"/>
In EVAP mode digitally displays LEAK SIZE in inches. E.g. 020 is twenty thousands of an inch, or ½ mm				<input checked="" type="checkbox"/>
Vacuum-decay test to verify leaks when cannot be verified using pressure. Also performs pressure-decay			<input checked="" type="checkbox"/>	<input checked="" type="checkbox"/>
Ability to perform both EVAP and High Pressure diagnostic testing				<input checked="" type="checkbox"/>
Smart Pressure – Advanced Smoke Producing Technology Automatically delivers densest smoke vapor, regardless of pressure setting				<input checked="" type="checkbox"/>
Wireless remote – Operate machine or select mode from anywhere around vehicle				<input checked="" type="checkbox"/>
Easy digital pressure setting				<input checked="" type="checkbox"/>
Multiple Mode Selections – Pressure in PSI or bar; Vacuum (IWC);Flow L/M; Quantifies and displays EVAP Leak Size – each displayed with digital accuracy				<input checked="" type="checkbox"/>
Self-Calibrating with every Power-on Self-Test				<input checked="" type="checkbox"/>

We Make the Invisible — Visible!



#WVA060

## SMART PRESSURE DIAGNOSTIC SMOKE MACHINE

Find All High Pressure Leaks with Smart Pressure Technology and UltraTraceUV<sup>®</sup> dye.

The WV711's Smart Pressure technology produces the densest visible smoke vapor over the unit's entire range of operating pressure. Smart Pressure technology software electronics prevents thinning of smoke density that occurs when conventional units are set at high pressure. A denser smoke vapor means it's easier to see at leak points. It also means a faster UltraTraceUV dye deposit at the exact location of the leaks, which is essential for high pressure leak testing! You simply can't find all the leaks without it!

### Features

- Contaminant-free UltraTraceUV dye solution marks leak spot: essential for high pressure testing
- Easy Digital Pressure Setting: no need to fumble with analog regulator
- Smart Pressure technology: automatically delivers densest smoke vapor, regardless of pressure setting
- Selection Modes: digital display shows pressure in PSI/bar and flow in LPM
- Quantifies Leak: with pressure-decay as well as leak flow rate, regardless of pressure setting
- Flexible Gas Source: use with workshop air or any inert gas
- Self-Calibrating
- Tests everything from intake to DPF, designed for turbocharged vehicles
- Tests virtually all pressure systems (Do not use on EVAP System)

#WV711 Smart Pressure Diagnostic Smoke Machine

#WV711-PLUS Smart Pressure Plus All-in-One Diagnostic Smoke Machine

## INERT GAS PACK

Designed to work in combination with all current Vacutec Smoke machines.

Inert Gas Pack provides safer EVAP testing in a very portable kit. It provides all the power of a large gas cylinder but fits into the palm of your hand. Can perform between 25-50 full-cycle EVAP tests per filled cylinder and is inexpensive to refill.

**Included:** Preset CO2 regulator with cylinder fitting, pressure gauge, universal push-on female coupler and 20 oz. liquid CO2 cylinder. (Cylinder arrives empty)

**Meets SAE International** technical papers inert gas recommendations for EVAP system testing (2008-01-0554 & 2007-01-1235).

Using air as the smoke carrier is not recommended in SAE Papers or by Automakers when testing fuel vapor (EVAP) system. Air can create a flammable fuel mixture in the vehicle's fuel tank.

**Automakers** also require the use of an inert gas when testing an EVAP system.

#WVA060

# THE ONLY SMOKE TECHNOLOGY IN THE WORLD THAT MEETS SAE INTERNATIONAL SAFETY STANDARD RECOMMENDATIONS.

## ULTRATRACE<sup>UV</sup><sup>®</sup> CONTAMINANT-FREE DYE SOLUTION

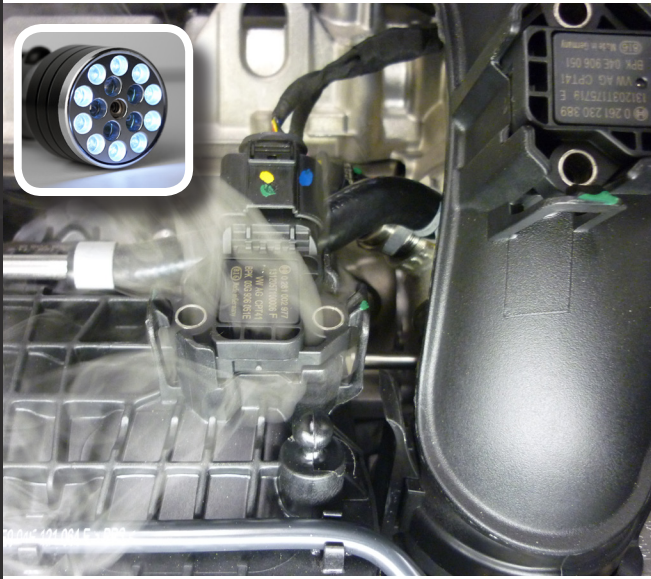
- Smoke test with the ONLY OEM approved non-contaminating and non-permanent smoke solution (the smoke that won't stink!)
- Deposits UV-activated fluorescent dye at the exact location of a leak
- Non-contaminating and non-conductive
- Two 12 oz bottles included with WV605
- Two 16 oz bottles included with EELD601
- 12 oz services approx. 350 test cycles
- 16 oz services approx. 500 test cycles

## ULTRATRACE SMOKE SOLUTION

- The same OEM-Approved formula but without dye
- Non-contaminating and non-conductive.



Part No.	Description	Size
#WV0712UV	UltraTraceUV <sup>®</sup> Contaminant-Free Dye Solution	12 oz. bottle
#WV0716	UltraTrace <sup>®</sup> The same OEM-Approved formula <i>but without dye</i>	12 oz. bottle
#WV0716UV	UltraTraceUV <sup>®</sup> Contaminant-Free Dye Solution	16 oz. bottle

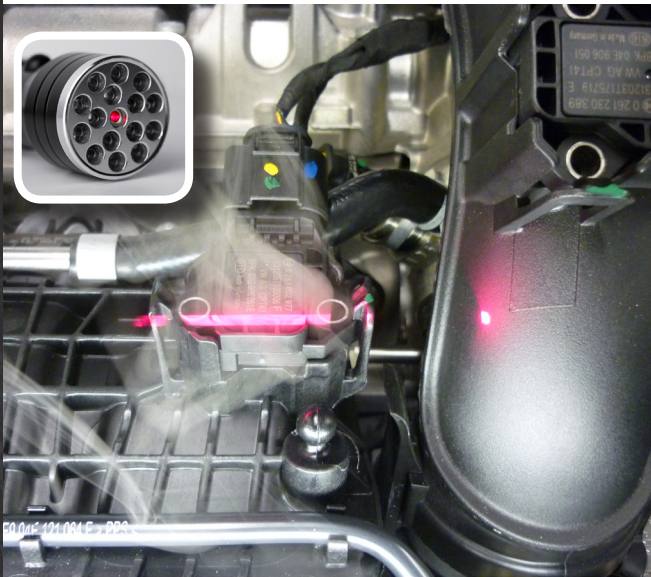


### COMBINATION WHITE, UV, & LASER LIGHT

Includes batteries and yellow glasses.

- Included with WV605 and WV608

#WVA065



### POWERFUL FOCUSED-BEAM UV LIGHT

Highlights the fluorescent dye, from the UltraTraceUV® smoke vapor, that the Vacutec smoke machines deposit at the exact location of a leak.

- Includes yellow glasses, 12-vdc (cig lighter adapter) and 120-vac charger

#WVA066



**BRILLIANTLY SIMPLE AND REUSABLE!**  
**SAVE MONEY, NO COSTLY REPLACEMENT SEALS NEEDED—**  
**USE WITH ANY SMOKE MACHINE OR OTHER LEAK**  
**DETECTION DEVICE**

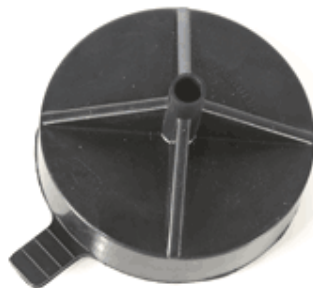


**UNIVERSAL ADAPTER**

*(Standard)*

- Quickly pops-on virtually any filler neck

**#WVA063**



**UNIVERSAL ADAPTER**

*(for BMW /MINI)*

- Specifically designed for BMW and MINI filler necks
- U.S. Patent 8,408,047

**#WVA064**



**CAPLESS ADAPTER**

*for Ford and G.M. double-door capless fuel tanks*

- Specifically designed for new capless fuel tanks.
- U.S. Patent 8,998,170 | Int'l patents pending

**#WVA078**

WVA096 In use



We Make the Invisible — Visible!



**BLADDER PLUG, WITH THROUGH HOLE**

- Includes spare bladder replacement
- 1.9" expands to seal large intake or exhaust openings of up to 6"/152mm
- Bladder resists heat better than others (up to 375°F/190°C)

**#WVA096**



**BLADDER REPLACEMENT**

- Fits WVA096

**#WVA098**



**SMALL BLADDER PLUG WITH THROUGH-HOLE**

- 1.25" expands to seal small diameter openings up to 4 inches with included hand pump
- Body will flex for curved applications.
- Bladder easily conforms to round or irregular shapes
- Patent Pending

**#WVA132**

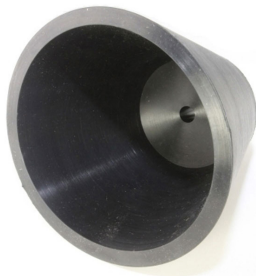


**HEAVY DUTY BLADDER PLUG WITH THROUGH-HOLE AND PRESSURE POP-OFF VALVE**

- 2.9" expands to seal or plug large intake or exhaust openings of up to 6 inches
- Heavy duty bladder easily conforms to round or irregular shapes

**#WVA124**





### LARGE CONE ADAPTER

Used to introduce smoke into engine intake systems and large exhaust systems.

- Size: 3.5" x 6" x 4.5" long
- Included with: WV604, WV605, WVA067, WV608

**#WVA067**



### EXHAUST CONE ADAPTER

Exhaust Cone 6" in length and tapered from 1" to 3 1/2", the Exhaust Cone is designed for use in diagnosing exhaust system leaks.

- Made from EPDM rubber with a neoprene inlet hose, the Exhaust Cone has a 3/8" smoke channel and will fit a wide variety of tailpipe diameters.
- Included with: WV604, WV605, WVA001, WV608, EELD601

**#WVA001**



### ASSORTED CAP-PLUG SET

Cap Plug Kit Ranging in sizes from 1 3/4" to 4 1/2" and 1/8" to 3/16", these accessories are designed to seal a wide range of openings.

- Useful for inside and outside diameter openings, each cap plug is made from molded vinyl.
- Included with: WV604, WV605, WV608, EELD601

**#WVA002**



### 1/4" X 25' COILED HOSE

Nitrogen hose to Evap Tester

- 25' coiled hose connects between the nitrogen cylinder and smoke machine
- Connect the 1/4 pipe-thread to the nitrogen regulator and the quick-disconnect fitting to the smoke machine
- Included with:

**#WVA041**



### VW TURBO ADAPTER

Adapts smoke machine to VAG tool for OEM specific test procedures.

**#WVA092**



### QUICK-CONNECT ADAPTER PLUG

Plugs the adapter's through hole, to allow any adapter to be used as a system plug.

- For use with WVA124

**#WVA095**



### EVAP ADAPTER BLOCK W/ PRESSURE RELIEF VALVE

Provides extra reach and redundant safe-pressure control with 10 ft. extension hose and nozzle

**#WVA129**



### INFLATABLE PLUG

Test Plug with Safety Chain and Ring (2.75" Ø expands to 3.25" Ø).

- Max Inflation Pressure: 35 PSI.
- Withstands 13 PSI Backpressure

**#WVA131**



### EXPANDED TURBO SYSTEM ADAPTER SET

21 sizes ranging from 35mm to 135mm, in 5mm increments.

- Includes quick-connect adapter plug (WVA095) and case.
- Designed to work with our WV711 variable pressure smoke machine, for quick leak detection of turbo/boosted systems.
- Turbo adapters also sold separately

**#WVA110**



### EXPANDED TURBO SYSTEM ADAPTER SET

15 sizes ranging from 35mm to 135mm, in 5mm increments.

- Includes quick-connect adapter plug (WVA095) and case.
- Designed to work with our WV711 variable pressure smoke machine, for quick leak detection of turbo/boosted systems.
- Turbo adapters also sold separately

**#WVA091**



### EVAP SERVICE PORT ADAPTER FITTING

Standard Size

- Evap Service Port Kit (OBD-II); connects to most factory-installed fittings for accessing OBD-II EVAP system.
- Included with: WV604, WV605, WV608, EELD601,

**#WVA006**

### EVAP SERVICE PORT ADAPTER FITTING

Small Size

- Fits some Ford products.
- Included with:

**#WVA042**

### DUAL-SIZE SCHRADER REMOVAL/INSTALLATION TOOL

Removal and Installation tool for EVAP service ports

- Included with: WV604, WV605, WV608, EELD601,

**#WVA049**

### SMOKE DIFFUSER

For finding wind/water leaks

Smoke Diffuser Made of molded polyvinyl, the smoke diffuser is resistant to chemicals and abrasion.

- Slows and concentrates the EVAPro smoke for use in diagnosing wind and water leaks in vehicle passenger compartments.
- Included with: WV604, WV605, WV608, EELD601,

**#WVA03**



### REMOTE CONTROL

Convenient AND saves time.

Two button wireless remote to operate tester STOP/START (red button) or DISPLAYSELECT (gray button) functions.

- For use with WV711, WV711-PLUS

**#WVA073**



### PLUG-IN BATTERY CABLES

Plug-in design for easy field replacement.

Plug-in Battery Cables: (WVRP-40) connects to WV711-PLUS and 12VDC battery.

**#WVRP-40**



### POWER CONVERTER

Connects to smoke tester and grounded wall power outlet, to avoid using the vehicle battery as a power source.

**AC INPUT:** 100-240V AC/5A 50/60HZ **DC OUTPUT:** 12V 25A

**#WVA080**



### PRE-SET GAS FLOW REGULATOR 100 PSI

No adjustments to fool with, always guarantees proper operating pressure for any Vacutec Smoke machine.

- Easily connects to nitrogen cylinder and to coiled hose (# WVA041)
- Maximum inlet pressure is 3,000 psig

**#WVA051**

**CPS**® Automotive

**CPS Products Canada Ltd. Automotive**

1324 Blundell Road  
Mississauga, ON, L4Y 1M5  
Tel: +1 905-615-8620  
Toll Free: 1-877-776-8486  
Fax: +1 905-615-9745

**CPS Products, Inc. U.S.A.**

(Headquarters)  
1010 East 31st Street  
Hialeah, Florida 33013, USA  
Tel: +1 305-687-4121  
Toll Free: 1-800-277-3808  
Fax: +1 305-687-3743

**CPS PRODUCTS N.V**

Krijgsbaan 241, 2070  
Zwijndrecht, Belgium  
Tel: +323 281 30 40  
Fax: +323 281 65 83

**CPS AUSTRALIA PTY. LTD.**

109 Welland Avenue  
Welland, South Australia 5007  
Tel: +61 8 8340 7055  
Fax: +61 8 8340 7033

Connect with us on social media

