

MotorVac GDi Cleaning Solution

GDi 2 part kit #400-0458 GDi tool #500-0467

**Up to 65% better
deposit removal
than existing
methods.**

Our patent pending chemical formula has been designed to dissolve or break down deposits without disassembling parts of the intake assembly. The cleaner will emulsify the deposits and the rinse will remove the softened deposits. These deposits will easily burn in the combustion chamber. Our friction modifier will lubricate the valves and combustion chambers for better compression.



GDi

MotorVac GDi Cleaning Solution

GDi 2 part kit #400-0458 GDi tool #500-0467

GDi

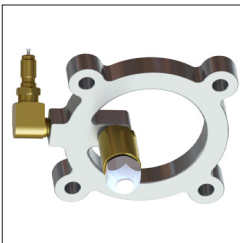
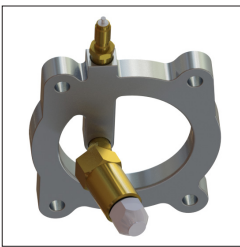
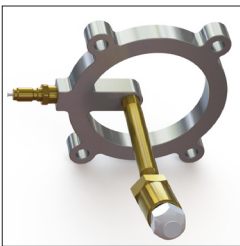


patent pending chemicals

GDi deposits are unlike traditional carbon deposits. Our chemicals are specifically designed for GDi intake deposits with components that comprise formulas that are superior to existing products. We use a chemical that softens and dissolves the deposits ensuring no chunks are dislodged which could cause damage to downstream components including the combustion chambers, turbochargers, and catalytic converters.

patent pending process

Our main advantage is that no one else is going behind the throttle plate. The location of the adapter/nozzle, positioned behind the throttle plate in the center of the air passage that leads to the intake plenum, takes advantage of the plenum architecture which has been designed to lead air from the throttle plate equally to each of the cylinders resulting in the best possible distribution of the chemicals.



Part #	Description	UPC	Units per box	Height (in)	Width (in)	Length (in)	Weight (lbs)
400-0456	GDi 2 part kit	16286040004586	6	7.5	5.25	2.5	2.3
500-0467	Motorvac GDi Induction Tool	628604027126	1	15	9	4.5	4.9

Adapters

Brand	Name	Displacement	Adapter Part #
BMW	B48	1998 cc	067-1722
	EcoBoost 1.6	1596 cc	067-1701
	EcoBoost 2.0	1999 cc	067-1702
Ford	EcoBoost 2.3	2261 cc	067-1723
	EcoBoost 2.7	2694 cc	067-1703
	EcoBoost 3.5	3496 cc	067-1704
GM	Ecotec LUJ/LUV	1364 cc	067-1705
	Ecotec LEA	2384 cc	067-1710
	Gamma GDi 1.6	1591 cc	067-1720
Hyundai/Kia	Nu GDi 2.0	1999 cc	067-1720
	Theta GDi 2.0	1998 cc	067-1720
	2.0T GDi Turbo	1998 cc	067-1720
Nissan	5.6L DIG V8		067-1721