



Multibuster 8020

SHALLOW DRAUGHT MULTI-ROLE HEAVY DUTY VESSEL

DAMEN

The Damen Multibuster offers ultimate flexibility for offshore and inshore operations



Transform to perform

The Multibuster is designed to perform a wide variety of operational tasks across a number of different markets. The characteristics required for this versatile profile have been incorporated into the design from the outset. The result is a flexible, stable and robust platform that can be rapidly and easily adapted to diverse tasks by means of modular applications. This makes the Multibuster the ideal on-site vessel for projects. Mobilisation costs are significantly reduced, as this one vessel does it all and does it well.

Nearshore capability

To support shallow draught operations, the propulsion installation does not extend below the base line. Furthermore, the bottom structure is strengthened and the vessel's cooling system adapted to allow for beached operations.

Ready for the future

The Multibuster adopts a dieselelectric propulsion system to adapt to varying operational load profiles, reducing both emissions and fuel costs. The flexibility of the vessel allows it to be continually adapted to new markets, making it future-proof.

Space

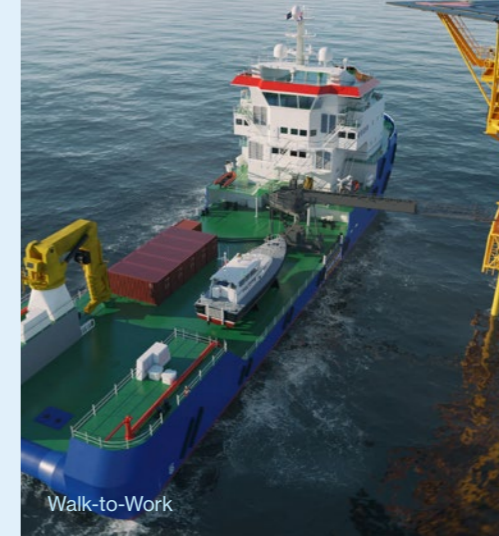
The Multibuster, with its large aft deck and ample accommodation is well-suited to transporting project cargo and crew. The full beam of the aft deck can be used as it is free at the sides from de-aeration-and filling pipes. Large, easily accessible storage space is provided for project and other equipment.

OPERATIONAL TASKS

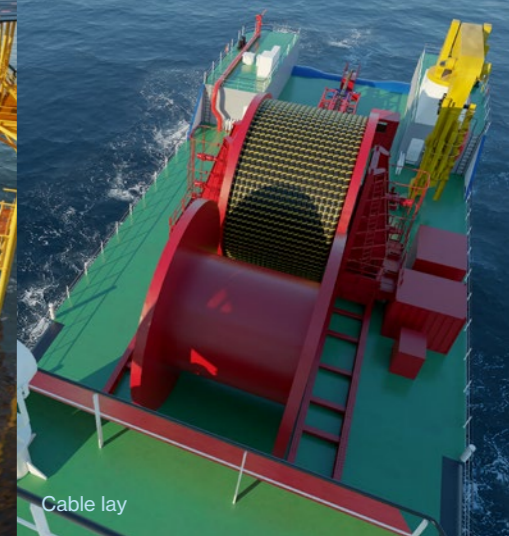
- › Walk-to-Work and offshore access
- › Accommodation support
- › Cable inspection, repair and cable laying
- › Trenching
- › ROV support
- › Supply duties for floating and fixed offshore assets
- › SBM support
- › Dive support
- › Installation and maintenance support
- › Decommissioning support
- › Rock dumping

MARKETS

- › Renewables
- › Oil & gas
- › Marine contracting
- › Dredging



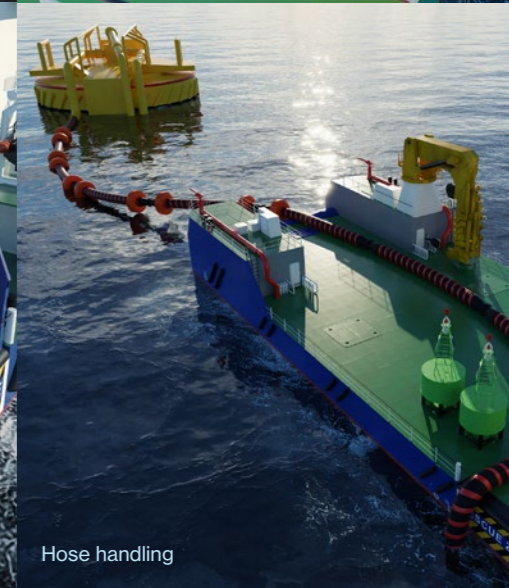
Walk-to-Work



Cable lay



Diving support



Hose handling

STANDARD

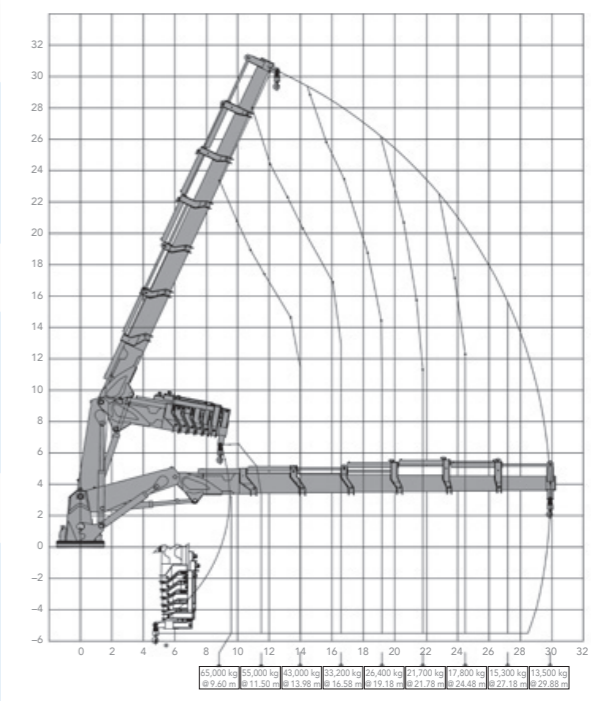
- › Propulsion system consisting of azimuthing propellers for excellent manoeuvrability and sailing performance
- › DP2
- › Knuckle-telescopic boom crane
- › FiFi-1

OPTIONS

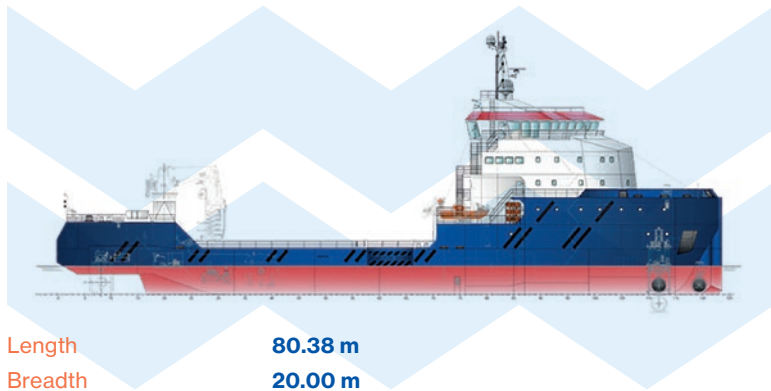
For versatility, the Multibuster can be fitted with a range of equipment, including the following:

- › A-frame
- › 4-point mooring
- › Cable carousels
- › Extra propulsion lines and power for 91 tons bollard pull
- › Active heave compensation on crane
- › FiFi-2
- › Dry bulk system
- › Daughter craft
- › Gangway system
- › ROV/dive modules
- › Towing package that includes waterfall winch, shark jaws, towing pins and stern roller

Offering you operating flexibility



Damen Multibuster 8020



Length	80.38 m
Breadth	20.00 m
Depth	5.50 m
Draught	3.00 m
Deck area	800 m²
Deck loading	10 t/m²
Main crane	65 t @ 9.6 m / 13.5 t @ 29.9 m
Auxiliary crane	5.4 t @ 12.7 m / 17.0 t @ 4.8 m
Positioning	DP Class 2
Max. speed	11 kn
Max. current at DP	0.75 m/s
Bollard pull (approx.)	45 to 58 t depending on propulsion configuration
Installed power	4890 kW
Thrusters:	
FPP Azimuth Retractable	2x 1400 kW
Bow Thruster	1x 800 kW
Tunnel Thruster	1x 765 kW
Accommodation	60 persons MLC compliant
Cabins	33 units
Construction yard	Albwardy Damen (UAE)

» Services

Damen Services offers a wide-ranging portfolio of customer support and after-sales care, covering a vessel's complete lifecycle.

» Financing

Damen Customer Finance provides finance solutions for the private and public sectors alike.

» Damen Triton

Damen Triton is a remote monitoring and operational insight system. Damen has developed this to put operational data to work in order to maximise safety, sustainability and efficiency.

» Safety and comfort

The layout of working areas and positioning of equipment is designed to facilitate a smooth flow of work and easy maintenance. Living and sleeping areas are designed to a high standard. These characteristics combine to create a vessel that is both safe and comfortable at sea. A real home away from home.



Day room



Crew cabin



Bridge

DAMEN

Damen Shipyards Gorinchem
Avelingen-West 20
4202 MS Gorinchem

P.O. Box 1
4200 AA Gorinchem
The Netherlands

+31 (0)183 63 99 11
info@damen.com
damen.com