

T CORE ICF

LESS MATERIAL • LESS LABOUR • LESS COST

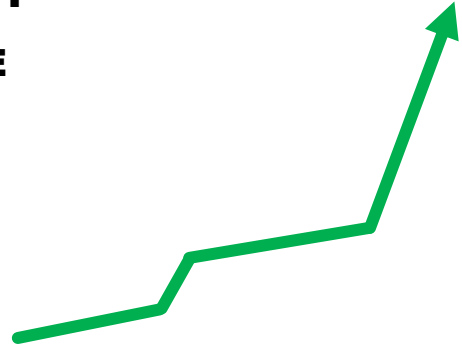
INSULATED CONCRETE FORM – “ICF”



PROS' AND CONS' OF ICF CONSTRUCTION

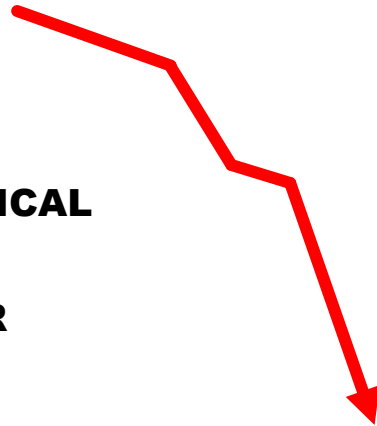
WHY ICF CONSTRUCTION?

- ◇ **BETTER STRUCTURAL INTEGRITY**
- ◇ **LOWER SOUND TRANSMITTANCE**
- ◇ **HIGHER INSULATION VALUES**
- ◇ **AIR TIGHTNESS**
- ◇ **RODENT/INSECT RESISTANT**
- ◇ **LONG TERM ENERGY SAVINGS**

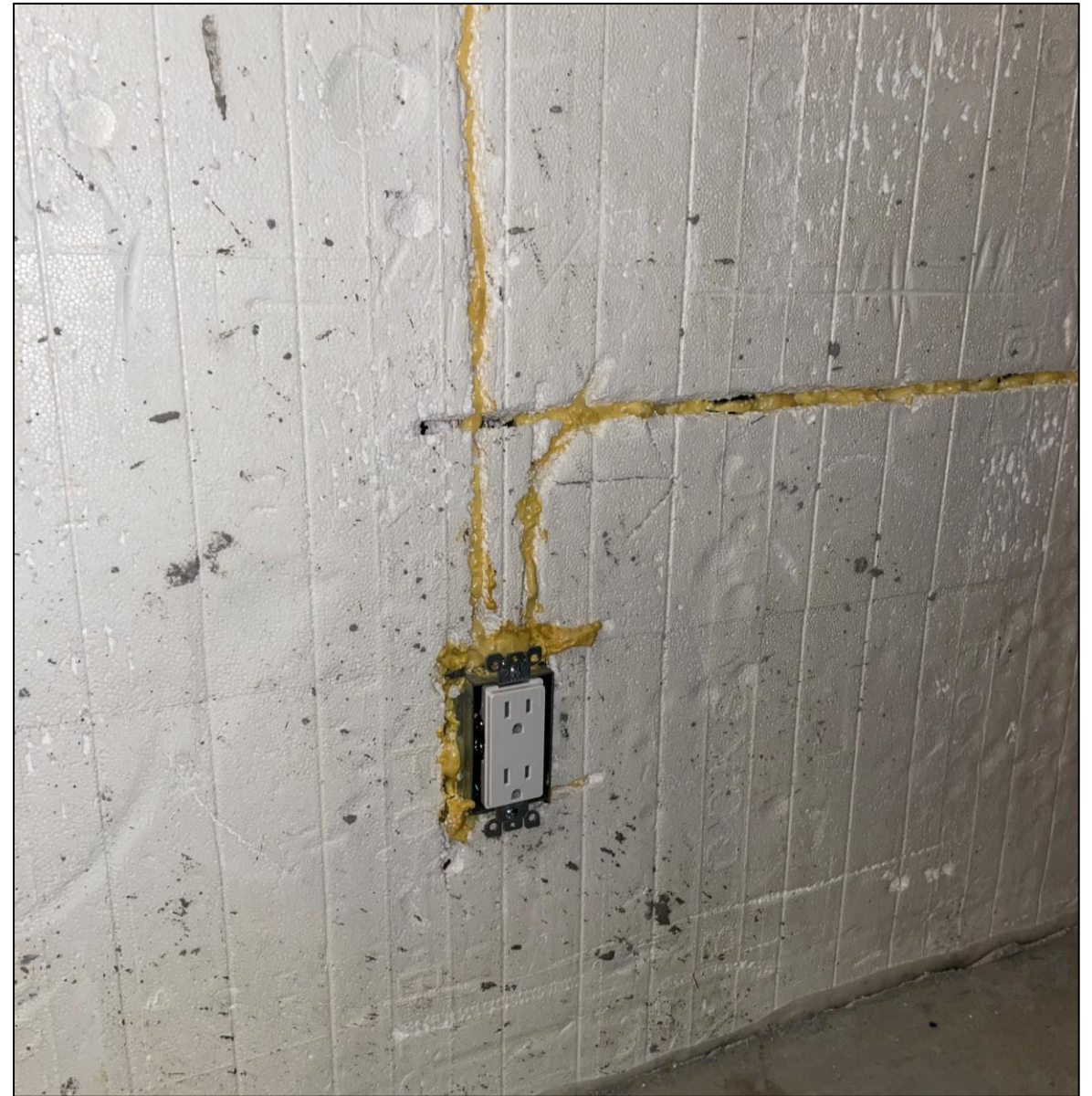


DRAWBACKS OF USING ICF?

- ◇ **CONCRETE PRODUCTION IS THE HIGHEST CARBON FOOTPRINT IN CONSTRUCTION**
- ◇ **TOXINS AND WASTE RELEASED INTO THE ENVIRONMENT WHEN INSTALLING ELECTRICAL AND PLUMBING LINES**
- ◇ **POOR INDUSTRY STANDARD PRACTICE FOR INSTALLING ELECTRICAL EQUIPMENT**



TYPICAL ELECTRICAL INSTALL IN ICF



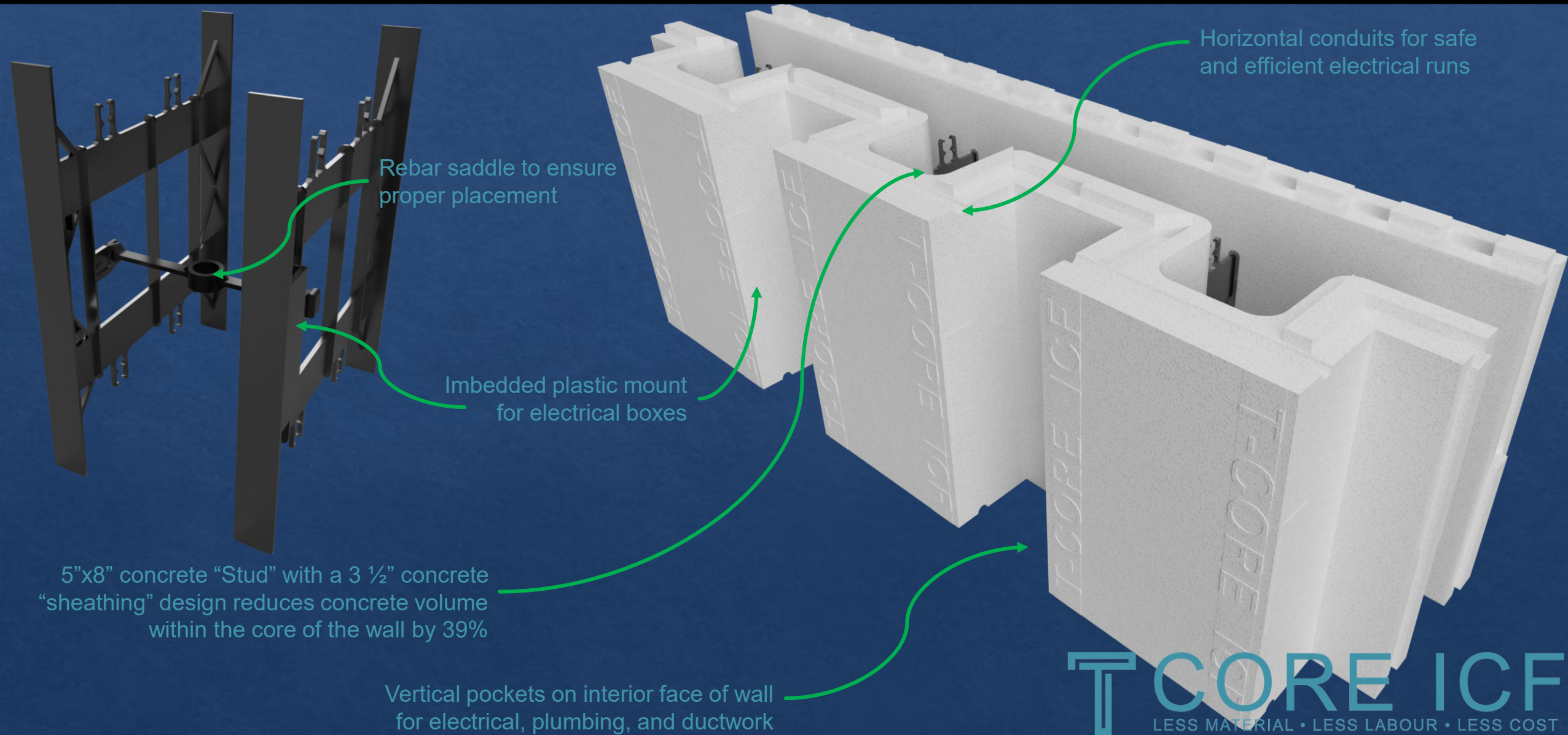
HOW T-CORE ICF DOES IT BETTER!

Horizontal conduits for safe and efficient electrical runs

Safe and secure electrical box installation

T CORE ICF
LESS MATERIAL • LESS LABOUR • LESS COST

HOW T-CORE ICF DOES IT BETTER!



PROOF OF CONCEPT TEST



T CORE ICF
LESS MATERIAL • LESS LABOUR • LESS COST

PROOF OF CONCEPT TEST



T CORE ICF
LESS MATERIAL • LESS LABOUR • LESS COST

COST COMPARISON AND SAVINGS

8' long 8' tall 2x8 PWF wall				
	Qty	units	Unit Price	Price
Studs	7	ea	\$18.88	\$132.16
Plates	3	ea	\$18.88	\$56.64
Insulation 8" thick	64	sq ft	\$1.39	\$88.96
Vapour barrier	64	sq ft	\$0.0750	\$4.80
Exterior Sheating 3/4"	64	sq ft	\$2.63	\$168.32
Fasteners	1	LS	\$10.00	\$10.00
Labour	2.5	man hours	\$100.00	\$250.00
sealants	1	Tube	\$14.00	\$14.00
		total		\$724.88
		Sq ft Total		64
		price per sq foot		\$11.33

Standard ICF				
	Qty	units	Unit Price	Price
Standard ICF Block	12	Block	\$32.00	\$384.00
Rebar 10M verts	48	Ft	\$0.55	\$26.40
Rebar 10M horiz	48	Ft	\$0.55	\$26.40
Labour	1.92	man hours	\$100.00	\$192.00
Concrete	1.58	yds	\$250.00	\$395.00
		total		\$1,023.80
		sq ft total		64
		Price Per Sq Ft		\$16.00

8 x 8' T-Core ICF Block				
	Qty	units	Unit Price	Price
T Core Block	12	Block	\$32.00	\$384.00
Rebar 10M verts	48	Ft	\$0.55	\$26.40
Rebar 10M horiz	48	Ft	\$0.55	\$26.40
Labour	1.92	man hours	\$100.00	\$192.00
Concrete	0.9638	yds	\$250.00	\$240.95
		Total		\$869.75
		sq ft total		64
		Price Per Sq Ft		\$13.59

COST COMPARISON AND SAVINGS

Parameters:

- 32' x 50' home = 1600 Ft²
- 8' tall ICF wall
- No window or door openings
- Straight blocks required = 194
- Corner blocks required = 24

Competitors Construction Cost:

- ICF Block Material = \$7,210
 - Concrete Material = \$8,920
 - Added labor cost for M&E = \$720
- TOTAL: \$16,850

T-Core ICF Construction Cost:

- ICF Block Material = \$7,210
 - Concrete Material = \$5,442
 - Added labor cost for M&E = \$0
- TOTAL: \$12,652

COST SAVINGS USING T-CORE ICF: \$4,198



T CORE ICF
LESS MATERIAL • LESS LABOUR • LESS COST

SUMMARY AND CLOSURE

- Reduces carbon footprint by reducing concrete volume in the wall core by 39%
- Reduces toxic gasses and EPS waste from entering the environment at the construction site
- Speeds up sub-trades on-site for a stream lined project delivery
- Easier to retrofit electrical and plumbing behind wall finish during future renovations

WE make housing Greener • More cost effective • Faster to construct • While maintaining structural integrity



SUMMARY AND CLOSURE



T CORE ICF
LESS MATERIAL • LESS LABOUR • LESS COST

T CORE ICF

LESS MATERIAL • LESS LABOUR • LESS COST