

BLOCK PARTY

FIRST SEASON PRODUCTION

THROW ME ON THE BURNPILE AND LIGHT ME UP

Written and Performed by Lucy Alibar
Directed by Neel Keller
World Premiere
Sep 10 – Oct 2, 2016

SECOND SEASON PRODUCTION

VIGUÑA

By Jon Robin Baitz
Directed by Robert Egan
World Premiere
Oct 23 – Nov 20, 2016

DOUGLAS+ SPECIAL EVENT

THE WHOLEHEARTED

Conceived and Created by Stein | Holum Projects
Written and Co-directed by Deborah Stein
Performed and Co-directed by Suli Holum
World Premiere Production
Dec 2–11, 2016

DOUGLAS+ SPECIAL EVENT

ADLER & GIBB

By Tim Crouch
Directed by Tim Crouch, Andy Smith,
and Karl James
American Premiere
Jan 17–29, 2017

THIRD SEASON PRODUCTION

GOOD GRIEF

By Ngozi Anyanwu
Directed by Patricia McGregor
World Premiere
Feb 26 – Mar 26, 2017

FOURTH SEASON PRODUCTION

BLOCK PARTY

Celebrating Los Angeles Theatre

FAILURE: A LOVE STORY

from Coeurage Theatre Company
Written by Philip Dawkins
Directed by Michael Matthews
Apr 14–23, 2017

CITIZEN: AN AMERICAN LYRIC

from The Fountain Theatre
Written by Claudia Rankine
Adapted for the stage by Stephen Sachs
Directed by Shirley Jo Finney
Apr 28 – May 7, 2017

DRY LAND

from The Echo Theater Company
Written by Ruby Rae Spiegel
Directed by Alana Dietze
May 12–21, 2017

FIFTH SEASON PRODUCTION

KING OF THE YEEES

By Lauren Yee
Directed by Joshua Kahan Brody
World Premiere Production
Jul 9 – Aug 6, 2017



As we celebrate our 50th Anniversary Season, we would like to take this opportunity to thank the following donors who have made extraordinary investments in Center Theatre Group's future. Their support will ensure that Center Theatre Group—and Los Angeles audiences and artists—enjoy another 50 years of theatrical excellence.

GIFTS OF \$5,000,000 AND ABOVE

The Ahmanson Foundation
Brindell Roberts Gottlieb

GIFTS OF \$1,000,000 AND ABOVE

The Annenberg Foundation
Kirk & Anne Douglas
Kiki & David Gindler
Patricia Glaser & Sam Mudie
Aliza Karney Guren & Marc Guren
Ann & Stephen F. Hinchliffe, Jr.
The Los Angeles County
Arts Commission
Laura & James Rosenwald &
Orinoco Foundation
Sue Tsao

GIFTS OF \$500,000 AND ABOVE

Anonymous
Amy Forbes & Andrew Murr
Jerry & Terri Kohl
Deena & Edward Nahmias
Michael Ritchie & Kate Burton
Elliott Sernel

GIFTS OF \$250,000 AND ABOVE

Joni & Miles Benickes
Diana Buckhantz & the Vladimir and
Araxia Buckhantz Foundation
Nancy & Eric Garen
Vicki King
Renee & Meyer Luskin
Donna Schweers & Tom Geiser

GIFTS OF \$100,000 AND ABOVE

Anonymous
Derek & Yvonne Bell
Mara & Joseph Carieri
Cindy & Gary Frischling
Jody & David Lippman
Bill Resnick & Michael Stubbs
Deidra Norman Schumann

Center Theatre Group would also like to thank the following donors for making commitments to the **50th Anniversary Campaign** through increased giving to our Annual Fund and through legacy gifts to our Endowment:

Pamela & Dennis Beck, Anne Bruner & Jim Bremner, Nancy & Donald de Brier, Darell & Elizabeth Krasnoff, Jo Muse, Patrick Owen & Norman Dixon, Cheryl A. Shepherd, Sunshine Stone, Hope Landis Warner.

Legacy Gifts

\$1,000,000 AND ABOVE

Judith & Thomas Beckmen
Diane & Leon Morton

\$500,000 AND ABOVE

Richard & Norma Camp
Susan A. Grode
Linda S. Peterson

Other Legacy Gifts

Shirley & Irving Ashkenas, Bill Cohn & Dan Miller, Steven Llanusa & Glenn Miya, M.D., Gloria Lothrop, Carol & Douglas Mancino, Nan Rae, Randy & Bruce Ross



MICHAEL RITCHIE Artistic Director | STEPHEN D. ROUNTREE Managing Director | DOUGLAS C. BAKER Producing Director
 GORDON DAVIDSON Founding Artistic Director

Presents the  **coeurage theatre company** production of

FAILURE:

A LOVE STORY

Written by

Philip Dawkins

With (in alphabetical order)

Joe Calarco John N. Fail
June Carryl Gertrude Fail
Cristina Gerla Ensemble
Kristina Johnson Ensemble
Margaret Katch Nelly Fail
Denver Milord Ensemble
Gregory Nabours Ensemble
Theo Perkins Ensemble
Kurt Quinn Mortimer Mortimer
Brandon Ruitter Ensemble
Nicole Shalhoub Jenny June Fail
Gina Torrecilla Ensemble
Brittney S. Wheeler Ensemble

Scenic Design

JR Bruce

Costume Design

Allison Dillard

Lighting Design

Matthew Brian Denman

Original Music, Arrangements
& Music Direction

Gregory Nabours

Center Theatre Group
Associate Producer

Lindsay Allbaugh

Production Stage Manager

Emily Abbott

Stage Manager

Maggie Swing

Directed By

Michael Matthews

Time/Place: Chicago, 1928

Failure: A Love Story is performed without an intermission.

Failure: A Love Story received its Los Angeles premiere at Coeurage Theatre Company on July 24, 2015.

JEREMY LELLIOTT, Artistic Director NICOLE MONET, Executive Director

Block Party receives major support from ALIZA KARNEY GUREN and MARC GUREN
 with generous funding also provided by JONI and MILES BENICKES.

APRIL 14–23, 2017 **KIRK DOUGLAS THEATRE**

WHO'S WHO



JOE CALARCO (*John N. Fail*). Los Angeles: *Failure: A Love Story* (Ovation nomination), *The Pitchfork Disney* (Stage Raw nomination), *Balm in Gilead*, *The Rocky Horror Show*, *No. Saints Lane* (TicketHolder Award), *LA Lights Fire* (Coourage Theatre Company), *As White as O* (Road Theatre Company). Chicago: *The 4th Graders*

Present an Unnamed Love-Suicide (After Dark Award), *Camille/La Traviata*, *Leonce und Lena*, *Blood Wedding* (The Hypocrites), *Gator Paws* (various). TV: *American Horror Story*, *Masters of Sex*.



JUNE CARRYL (*Gertrude Fail*). Theatre: *Romeo and Juliet*, *Six Characters in Search of an Author*, *All My Sons*, *Julius Caesar*, *The Liquid Plain*, *The Trojan Women*, *The Threepenny Opera*, *Elmina's Kitchen*, *Venus*, *Civil Sex*, *Insurrection: Holding History*, *Late Bus to Mecca*. Film: *Under the Silver Lake*, *2 Lava 2 Lantula*, *Haiku Tunnel*. Television:

American Crime, *Colony*, *Documentary Now!*, *Castle*.



CRISTINA GERLA (*Ensemble*). Regional theatre: *25th Annual...Spelling Bee* (Sierra Madre Playhouse, Ovation nomination); *Failure: A Love Story* (Coourage Theatre Co., Ovation nomination); *Kingdom City* (La Jolla Playhouse); *Red Barn* (Independent Shakespeare Co.); *The Grapes of Wrath* (A Noise Within); *Peppa Pig Live!* (1ST US

nat'l tour). Other theatres and workshop productions: Pasadena Playhouse, LA Phil, LATC, Odyssey Theatre, PCPA. Training: BA UCLA TFTT; RADA. Proud member of Coourage. Love to my family, Mary Jo, and Anthony @ DDO.



KRISTINA JOHNSON (*Ensemble*). L.A.: *Search* (L.A. LGBT Center—Robbie Award winner, Best Actress), *Hit the Wall* (L.A. LGBT Center—LADCC and Stage Raw winner, Ovation nominated), *Failure: A Love Story* (Coourage—Ovation nominated), *Rabbit Hole* (La Mirada), *A Parallelogram* (Mark Taper Forum). International: *All the*

Happy People, Edinburgh. Regional: Goodman Theatre: *Sweet Bird of Youth*, *The Long Red Road*, *The Ballad of Emmett Till*, *Reverb*, and *Spirits to Enforce* (New Stages). Chicago: *A Streetcar Named Desire* (Writers), *Threepenny Opera* (Steppenwolf Garage). Love you, Bukauskas!



MARGARET KATCH (*Nelly Fail*). Regional: *Failure: A Love Story* (Coourage Theatre, Ovation nomination), *The School for Lies* (Chicago Shakespeare Theatre), *Les Liaisons Dangereuses* (Remy Bumppo), *Three Sisters* (The Gift Theatre), *Picasso at the Lapin Agile* (Noble Fool), *Bachelorette* (Cardinal Stage), *A Midsummer Night's Dream*

(Commonwealth Shakespeare Company), *Fanny Kemble's Lenox Address* (Shakespeare & Company). TV: *Gilmore Girls*, *Quick & Dirty*, *Ctrl Alt Delete*. Film: *Bastard Son of...*, *To Fall in Love with Anyone*, *Play This Game*. Creator: *Ctrl Alt Delete*. margaretkatch.com



DENVER MILORD (*Ensemble*). Thrilled to be on the Block with the Fails! Off-Broadway: *Terms of Endearment*, 59E59. Film: *Jack Reacher*, *The Last Witch Hunter*, *Like You Mean It*. TV: *The Blacklist*, *Southland*, *Outsiders*, *Full Circle*. Carnegie Mellon BFA. Thanks to all my teachers, family & friends, Coourage, and of course Mike Matthews!



GREGORY NABOURS (*Ensemble, Original Music, Arrangements & Music Direction*) is an award-winning songwriter, music director, and the resident composer and a founding member of Coourage Theatre Company. Gregory's work has been performed across the country, including an evening at the Kennedy Center for

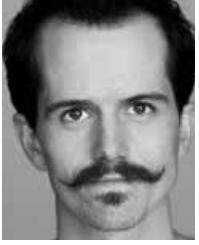
ASCAP's *Part of Broadway: Yesterday, Today, and Tomorrow* series. He has two musicals set for production within the next year, and will soon be featured as a selected songwriter for The American Music Theatre Project.



THEO PERKINS (*Ensemble*). Broadway: *Joseph and the Amazing Technicolor Dreamcoat*. L.A. theatre: *The Golden Dragon* (The Theatre @ Boston Court), *Fences* (International City Theatre), *The Brothers Size*, *In the Red and Brown Water* (Fountain Theatre). TV: *Lie to Me*, *Raising the Bar*, *NCIS*. Theo is the founder of the

Elizabeth Youth Theater Ensemble, a nonprofit that brings drama students and police officers together in performance residencies. BA: Morehouse College; MFA: UCLA (acting).

KURT QUINN (*Mortimer Mortimer*). National tour: *The Complete History of Comedy (abridged)* (Reduced Shakespeare Company). L.A. theatre: Trey Parker's *Cannibal! The Musical*



(L.A. premiere, Coeurage); *The 4th Graders Present an Unnamed Love-Suicide* (Coeurage); *The Homosexuals* (Celebration); *Translations* (Coeurage); *Measure for Measure* (A Noise Within); among others. Film: *The Outdoorsman*. Improv/sketch: iO West, Groundlings, UCB. National commercials: Yelp, Kia, Verizon, Wendy's, ESPN. The Internet knows Kurt for his ability to talk backwards.



BRANDON RUITER (*Ensemble*) is elated to be back for more *Failure!* He is a company member with The House Theatre of Chicago and has worked with numerous L.A. theatres, including understudying the role of Ethan in *Sex With Strangers* at the Geffen Playhouse. Favorite film and TV credits include *Gilmore Girls: A Year in the Life* (Netflix), *Into the Storm* (Warner Bros.), *Crisis* (NBC), and *Garfunkel and Oates* (IFC). He recently finished producing, writing, and starring in the short film *Be Still*.



NICOLE SHALHOUB (*Jenny June Fail*). Broadway: *China Doll*. Off-Broadway: *The Clean House* (Lincoln Center), *The Fifth Column* (The Mint). Select regional: *Five Mile Lake* (SCR), *American Night* (Yale Rep), *Mirror of the Invisible World* (The Goodman), *The Arabian Nights* (Berkeley Rep, Lookingglass, K.C. Rep, American Repertory Theater, Williamstown Theatre Festival). TV/film: *Bull*, *Madam Secretary*, *The Gaffigan Show*, *New Girl*, *The Mentalist*, *Legends*, *Scandal*, *The Good Wife*, *L&O: CI*, *Sex & The City 2*, *The International*, *Wetware*.



GINA TORRECILLA (*Ensemble*). Theatre credits include: *Die, Mommie, Die!*, *Currency*, *The Exit Interview*, *The Magic Finger*, *The Real Housekeepers of Studio City*, *I Love Lucy Live On Stage*, *The Next Fairy Tale*, *Assassins*, *Reckless*, *Twelfth Night*, *The Constant Wife*, *A Little Night Music*. Television: *Brooklyn Nine-Nine*, *Citizen*, *Scandal*, *Mad Men*, *Bones*, *Incredible Crew*, *Raising the Bar*. Film: *Twinkies & Donuts*, *Britney Baby...*, *All's Well*. Love and thanks to Michael Matthews, Coeurage, and Center Theatre Group for this amazing *Failure*. www.ginatorrecilla.com

BRITTNEY S. WHEELER (*Ensemble*). Theatre: *Side Show* (Conejo Players), *Parade* (Panic! Prod.), *All Shook Up* (Morgan-Wixson), *Failure: A Love Story* (Coeurage Theatre, Ovation nominee),



Ragtime (Norris CFTPA), *bare: a pop opera* (SVCAC), *Rent* (ECC & BTS), *In the Next Room* (Santa Paula Theater Ctr), *The Color Purple* (Celebration Theatre, Ovation winner). BA in theatre arts from Concordia University, Irvine. Casting Associate/ Company Member of Celebration Theatre. Lots of love and thanks to my parents, Center Theatre Group, my cast, and Michael Matthews.

PHILIP DAWKINS (*Playwright*) is a Chicago playwright and educator. His plays include *The Happiest Place on Earth* (Sideshow Theatre/Greenhouse Theater Center), *Le Switch* (About Face Theatre, The Jungle), *Charm* (Northlight Theatre), *Miss Marx: Or The Involuntary Side Effect of Living* (Strawdog Theatre), *The Homosexuals* (About Face Theatre), and the musical adaptation of Dr. Seuss's *The Sneetches* with composer David Mallamud (Children's Theatre Company, Minneapolis). His play *Charm* will receive its NY premiere at MCC this fall. He teaches playwriting at Northwestern University, Loyola University Chicago, and through the Victory Gardens ACCESS Program.

MICHAEL MATTHEWS (*Director*). Select credits: *Failure: A Love Story* (Ovation Award, director; L.A. Premiere), *Bootycandy* (L.A. premiere), *Funny Girl* (Ovation nom, director), *The Color Purple the Musical* (Ovation and LA Weekly Awards, director), *What's Wrong With Angry?* (Ovation nom, director), *Take Me Out* (Ovation nom, director; NAACP Award, director), *The Women of Brewster Place* (Ovation nom, director; NAACP Award, director), *The Bacchae* (Ovation nom, director), *Beautiful Thing* (Ovation nom, director). Recipient of the 2015 L.A. Drama Critics Circle Award for Career Achievement in Direction.

JR BRUCE (*Scenic Design*) is a Los Angeles-based scenic designer. Coeurage Theatre projects include: *Twelfth Night*, *Vieux Carré*, *Trouble with Words*, *Cannibal! The Musical*, and *Failure: A Love Story*. He is proud to be a producer of *Fefu and Her Friends*, performing at Frank Lloyd Wright's Hollyhock House. He is co-founder of The Flagship Ensemble and is a production designer at Universal Studios Hollywood. MFA: University of Illinois at Urbana-Champaign. See his portfolio at www.JRBruceDesign.com.

ALLISON DILLARD (*Costume Design*) is an Ovation-nominated costume designer local to Los Angeles. She holds an MFA in costume design from the University of Missouri-Kansas City. Recent work includes: *Die, Mommie, Die!*, *Dream Boy*, *Bootycandy* (Celebration Theatre), *Shine Darkly*, *Illyria* (Fugitive Kind), *Sons of the Prophet* (Blank Theatre), *Spies Are Forever*

(Tin Can Bros), *Les Misérables*, Disney's *The Lion King Jr.* (Milken Community Schools), *Failure: A Love Story* (Coourage Theatre). Her work can be seen at www.allisondillard.com.

MATTHEW BRIAN DENMAN (*Lighting Design*) has designed lighting for productions across the country, most recently *Die, Mommie, Die!*, *Charm*, and *Bootycandy* (Ovation Award nomination) at Celebration Theatre, *Failure: A Love Story* at Coourage Theatre, and *Niagara Falls* (Stage Raw Award nominee) at Theatre of NOTE. Other productions in Los Angeles include *Corpus Christi*, *revolver*, *What's Wrong With Angry?*, *The Next Fairy Tale*, [title of show], and *Women Behind Bars*. www.MatthewBrianDenman.com

EMILY ABBOTT (*Production Stage Manager*) is a Los Angeles native working as the Development Associate for The Pasadena Playhouse. Stage managing *Failure: A Love Story* has been a joy, and she is thrilled that Los Angeles gets to see this beautiful piece once again. Thank you to Center Theatre Group, Coourage Theatre Company, Michael Matthews, the designers, this beautiful cast, and wonderful crew for all of their hard work on this production.

MAGGIE SWING (*Stage Manager*). Center Theatre Group: *Vicuña*, *Throw Me On the Burnpile* and *Light Me Up*. Geffen Playhouse: *Big Sky*, *Barcelona*, *Guards at the Taj*, *Discord*, *The Country House*, *American Buffalo*. Boston Court: *Collective Rage*. European tour: *The Apple Family Plays*. Off-Broadway: *Regular Singing*, *Sorry*, *Love's Labour's Lost*, *Sweet and Sad*, *Knickerbocker*, *Compulsion*, *That Hopey Changey Thing* (The Public Theater), *Slowgirl* (Lincoln Center), *Blood Knot*, *The Orphans' Home Cycle* (Signature Theatre Company). Regional: various productions at Long Wharf Theatre and Hartford Stage Company.

COEURAGE THEATRE COMPANY was born in the backroom of a pie shop where founding artistic director Jeremy Lelliott convened a dozen graduates from California State University, Fullerton in 2009. Now in its eighth season, Coourage has received considerable acclaim for productions such as *Urinetown*, *The Sparrow*, *Assassins*, *The Yellow Boat*, *Translations*, and *The Trouble with Words*. Coourage makes professional intimate theatre accessible to all audiences with fresh, challenging productions and Pay What You Want admission.

COEURAGE THEATRE STAFF

Artistic Director Jeremy Lelliott
 Executive Director Nicole Monet
 Associate Artistic Director,
 Resident Sound Designer..... Joe Calarco
 Production Manager Abe Luke Rodriguez
 Director of Development Mark Jacobson
 Company Manager Sammi Smith
 CoLab Producer Malika Williams
 Director of Video Media..... John Klopping
 Music Director, Resident Composer Gregory Nabours
 Head of Casting Margaret Katch
 Casting Director Graham Kurtz
 Event Coordinator Joey Nicole Thomas
 Associate, Marketing and Development..... Katie Pelensky
 FOH Coordinator..... Laura Crow
 Brand Manager..... Julianne Donelle
 Press Representative Ken Werther

CREDITS

“Johnny Weismuller” dance numberChoreographed by Janet Roston
 Original Prop Design Michael O’Hara
 Produced by special arrangement with Playscripts, Inc. (www.playscripts.com).



MICHAEL RITCHIE Artistic Director | **STEPHEN D. ROUNTREE** Managing Director | **DOUGLAS C. BAKER** Producing Director
GORDON DAVIDSON Founding Artistic Director

Presents **THE FOUNTAIN Theatre** production of

CITIZEN:

AN AMERICAN LYRIC

By

Claudia Rankine

Adapted for the stage by

Stephen Sachs

With (in alphabetical order)

- Bernard K. Addison**..... Citizen #4
- Leith Burke** Citizen #3
- Tony Maggio** Citizen #6
- Monnae Michael**..... Citizen #2
- Simone Missick**..... Citizen #1
- Lisa Pescia** Citizen #5

Scenic & Projection Design

Yee Eun Nam

Costume Design

Naila Aladdin-Sanders

Lighting Design

Pablo Santiago

Original Music & Sound Design

Peter Bayne

Movement Director

Anastasia Coon

Center Theatre Group Associate Producer

Lindsay Allbaugh

Production Stage Manager

Shawna Voragen

Stage Manager

Terri Roberts

Directed By

Shirley Jo Finney

Time/Place: Now, an American city.

Citizen: An American Lyric is performed without an intermission.

Citizen: An American Lyric received its World premiere at The Fountain Theatre, Los Angeles on August 1, 2015. STEPHEN SACHS and DEBORAH LAWLOR, Artistic Directors | Directed by Shirley Jo Finney.

Block Party receives major support from ALIZA KARNEY GUREN and MARC GUREN with generous funding also provided by JONI and MILES BENICKES.

APRIL 28 – MAY 7, 2017 **KIRK DOUGLAS THEATRE**

WHO'S WHO



BERNARD K. ADDISON (*Citizen #4*). Santa Cruz Shakespeare: Ghost/Claudius in *Hamlet*, Bottom in *A Midsummer Night's Dream*. Center Theatre Group: *Romeo and Juliet*. L.A.: *Citizen: An American Lyric*, *Off the Rails*, *The Curse of Oedipus*, *Prometheus Bound*, *The Ballad of Emmett Till*, *Joe Turner's Come and Gone*, *Mother*

Courage, *Macbeth*. Regional: Oregon Shakespeare Festival, California Shakespeare Theater, Denver Center, Shakespeare Theatre Company. Broadway: *Electra*. Film: *Celebrity*, *The Farm*. Recent television: *Modern Family*, *Rake*.



LEITH BURKE (*Citizen #3*). *Judgement at Nuremberg* (Broadway); three seasons with the Oregon Shakespeare Festival; *Antony and Cleopatra* (Guthrie); *Miss Julie* (San Jose Rep); tours with the S.F. Mime Troupe; premiere of *Neighbors* (Matrix Theatre); *Citizen: An American Lyric* (Fountain Theatre). Film: *The Tiger Hunter*, *The Choir*

Director, *Suburbicon* (directed by George Clooney). Television: *Life in Pieces*, *The Mick*, Tyler Perry's *The Haves and the Have Nots*, *Scorpion*, *Grey's Anatomy*, *Parenthood*, *NCIS*, *Criminal Minds*, *CSI: NY*, *Numbers*, *The West Wing*.



TONY MAGGIO (*Citizen #6*). Credits include the Mark Taper Forum, Los Angeles Theatre Center, Pasadena Playhouse, Odyssey Theatre, Plaza de la Raza, Stages, John Anson Ford Theatre, L.A. Theatre Works, Playwrights Horizons, and Cherry Lane Theatre. Tony has received six Drama-Logue Awards, three *L.A. Weekly*

Theater Awards, a Garland Award, an Ovation Award, three Los Angeles Drama Critics' Circle nominations, and one LADCC Award for his various performances. He has acted in over 40 film and television roles.



MONNAE MICHAEL (*Citizen #2*). *King Hedley II* (Mark Taper Forum), *Citizen: An American Lyric* (The Fountain Theatre), *Boy Gets Girl* (Geffen Playhouse), *Joe Turner's Come and Gone* (ASF), *A Raisin in the Sun* (filmed for Lincoln Center Archives). Film: *42*, *Flight 93*, *Matchstick Men*. TV: *The Good Place*, *The Defenders*, *The Shield*,

American Dreams, *The Young and the Restless*, *McBride* (recurring roles), *American Horror Story*, *Veep*, *CSI: Miami*, *The Office*, *Rush Hour*, *Nip/Tuck*, and *The Practice*.



SIMONE MISSICK (*Citizen #1*). Regional: *Citizen: An American Lyric* (Fountain Theatre), *See You, Maybe* (Actors Workout Studio), *the road weeps*, *the well runs dry* (LATC), *The Mountaintop* (TheatreWorks), *In the Red and Brown Water* (Fountain Theatre). TV: Marvel's *Luke Cage* (Netflix), *The Defenders* (Netflix), *Wayward*

Pines (Fox), *Ray Donovan* (Showtime), *A Taste of Romance* (Hallmark). Film: *Jinn*, *Black Card*, *The Big Chop*, *Voicemail*.



LISA PESCIA (*Citizen #5*). L.A.: *Citizen: An American Lyric* (The Fountain Theatre); *The Circle* (Matrix Theatre); *Hollywood Shorts* (Whitefire); *The Prisoner of Second Avenue*, *Gingham Dog* (Beverly Hills Playhouse); *The Biz* (Zephyr Theatre). Film: *The M Word*, *Stealing Roses*,

2:13, *Queen of the Lot*, *Wedding Jimmy* (Best Short IIFF). TV: *The Mentalist*, *Parenthood*, *Curb Your Enthusiasm*, *Without a Trace*, *Cold Case*, *Criminal Minds*, *Touched by an Angel*, *Seinfeld*.

CLAUDIA RANKINE (*Author*) is the author of five collections of poetry, including *Citizen: An American Lyric* and *Don't Let Me Be Lonely*. For *Citizen*, Rankine won the Forward Prize for Poetry, the National Book Critics Circle Award for Poetry, the *Los Angeles Times* Book Award, the PEN Open Book Award, and the NAACP Image Award. A finalist for the National Book Award, *Citizen* also holds the distinction of being the only poetry book to be a *New York Times* bestseller in the nonfiction category. She lives in New York City and teaches at Yale University as the Frederick Iseman Professor of Poetry.

STEPHEN SACHS (*Adaptor*) is the author of 13 plays, including *Citizen: An American Lyric* (adaptor), *Cyrano* (L.A. Drama Critics Circle Award), *Bakersfield Mist* (London's West End, starring Kathleen Turner), *Central Avenue* (PEN Award finalist), *Sweet Nothing in My Ear* (PEN Award finalist), and others. He wrote the teleplay for *Sweet Nothing in My Ear* for CBS starring Marlee Matlin and Jeff Daniels. Sachs was honored by the Los Angeles City Council for "his visionary contributions to the cultural life of Los Angeles."

SHIRLEY JO FINNEY (*Director*) is an award-winning international director and actress. She has worn her director's hat in some of the most respected theatre houses across the country including McCarter Theatre, The Pasadena Playhouse, Goodman Theatre, Alabama Shakespeare Festival, Cleveland Play House, The Fountain Theatre, L.A. Theatre Works, Crossroads Theatre Company, Actors Theatre of Louisville

Humana Festival, the Sundance Theatre Workshop, the Mark Taper Forum, Kennedy Center for the Performing Arts, and the State Theatre in Pretoria, South Africa.

YEE EUN NAM (*Scenic & Projection Design*) is a scenic and projection designer for theatre, opera, and all forms of live performance. Her most recent design credits include set and projection design for *Sweep* at Aurora Theatre directed by Abigail Vega; *Single Black Female* at Crossroads Theatre Company directed by Shirley Jo Finney; and projection design for *A Mexican Trilogy: An American Story* directed by José Luis Valenzuela at LATC. Yee Eun is a recipient of the Cirque du Soleil Fellowship Award. www.yeeeenam.com

NAILA ALADDIN-SANDERS (*Costume Design*). Credits include *Neighbors*, *The Brothers Size*, *In the Red and Brown Water*, *The Ballad of Emmett Till*, *Gem of the Ocean*, *Joe Turner's Come and Gone*, *The Scottsboro Boys*, *The Color Purple*, *The Women of Brewster Place: The Musical*. The Robey Theatre Company: *The Magnificent Dunbar Hotel*, *Anna Lucasta*, *Bronzeville*, *The River Niger*, *A House With No Walls*, *Permanent Collection*, and all three parts of *The Haitian Trilogy*.

PABLO SANTIAGO (*Lighting Design*) is a lighting designer originally from Chiapas, Mexico who designs for theatre, opera, dance, and gallery work. He is the winner of Center Theatre Group's 2017 Richard Sherwood Award. His design in *Premeditation* was nominated for an Ovation Award in 2014, and he won a Stage Raw Award for *The Brothers Size* in 2015. Recent highlights include the opera *Breaking the Waves*, *A Mexican Trilogy* at LATC, *Zoot Suit* at the Mark Taper Forum, *Destiny of Desire* at the Goodman Theatre, and *Flight* for Opera Omaha.

PETER BAYNE (*Original Music & Sound Design*). Select theatre credits include South Coast Repertory, Boston Court, A Noise Within, The Fountain Theatre, Antaeus Theatre Company, The Colony Theatre, The Actors' Gang, Rogue Machine Theatre, Skylight Theatre Company, and The Elephant Theatre Company. Other regional credits include American Repertory Theater, Commonwealth Shakespeare Company, and Shakespeare and Company. Bayne is active as a composer in film and television. He produces leftfield dance music and performs as a multi-instrumentalist.

ANASTASIA COON (*Movement Director*) was nominated for an NAACP Award for Best Choreography for *Citizen* at The Fountain Theatre. As an actor, she was recently in Mac Wellman's *The Offending Gesture* at Son of Semele, Jonathan Caren's *Friends in Transient Places* (*Gypsy* on Netflix). *Ms. Magazine* named Anastasia's award-winning solo show *Gracie and Rose* the "Top 10 Feminist Pick of the Hollywood Fringe Festival." She's a graduate of Dell'Arte International School of

Physical Theatre and UT Austin's MFA acting program. Thank you, Amielynn. www.AnastasiaCoon.com

SHAWNA VORAGEN (*Production Stage Manager*) is a Los Angeles-based stage manager and Fountain Theatre regular. Her recent favorite stage management credits include *33 Variations*, *Next to Normal*, *Avenue Q*, and *In the Red and Brown Water*. Shawna is pleased and proud to be back with the Fountain family sharing this beautiful piece once again. Special thanks to Center Theatre Group and The Fountain for the opportunity to bring order to the madness once again, and to Marianne for everything.

TERRI ROBERTS (*Stage Manager*). Terri is thrilled to be part of *Citizen* at the Douglas. She has stage managed shows from Santa Barbara to Long Beach, and has proudly been part of The Fountain Theatre for most of the past decade. She's been a stage manager on 20 Fountain shows and also worked as props designer, house manager, and much more. She's also a theatre/entertainment journalist. Deep gratitude to Stephen, the *Citizen* team, Michael Ritchie, and the staff of Center Theatre Group.

THE FOUNTAIN THEATRE was founded in 1990 by co-Artistic Directors Deborah Lawlor and Stephen Sachs to create new work that reflects the diversity of Los Angeles. Now in its 27TH year, The Fountain is one of the most highly regarded theatres in Los Angeles and has won over 260 awards for excellence. Fountain projects have been seen in regional theatres across the US, made into a TV movie, and produced internationally.

ADDITIONAL STAFF

Video EngineerCorwin Evans
Props DesignerDillon Nelson
Discussion Leader Adenrele Ojo

CREDITS

Published by Graywolf Press. Copyright ©2014 by Claudia Rankine.

FOUNTAIN THEATRE STAFF

Stephen SachsCo-Artistic Director
Deborah LawlorProducing Artistic Director
Simon Levy Producing Director
James Bennett Associate Producer
Scott Tuomey Technical Director
Barbara Goodhill..... Director of Development
Lucy PollakPress Representative
Licia Jaccard Book Keeper
Marisela HughesBox Office Manager

Fountain Executive Producers for *Citizen*: Barbara Herman, Susan Stockel, Dorothy & Stanley Wolpert, Diana Buckhantz, Marjorie Goldman, Debra Grieb & John Mickus, Karen Kondazian, Brenda & Brett Marsh, Dr. Ejike & Mrs. Victoria Ndefo, Rita Rothman, Barbara & Barry Shaffer, Lois Tandy.

BLOCK PARTY

LOS ANGELES IS HOME TO OVER 250 THEATRE COMPANIES, featuring an abundance of talent, diversity, and ingenuity. We've seen all that on display since we first announced Block Party last year, when over 70 local companies applied to have a recent production remounted onstage at the Douglas. We're grateful to everyone who has been a part of this process, and we have had a wonderful time collaborating with Coeurage Theatre Company, The Fountain Theatre, and The Echo Theater Company to bring you these three shows. It's an honor to be highlighting some of the best work our region has to offer. Thank you for celebrating L.A. theatre by joining the Block Party!

TOP TO BOTTOM: The original cast in the Coeurage Theatre production of *Failure: A Love Story*. Photo by Matthew Denman. | L-R: Bernard K. Addison, Simone Missick, and Leith Burke in The Fountain Theatre production of *Citizen: An American Lyric*. Photo by Ed Krieger. | L-R: Connor Kelly-Eiding and Teagan Rose in The Echo Theater production of *Dry Land*. Photo by Darrett Sanders.





MICHAEL RITCHIE Artistic Director | STEPHEN D. ROUNTREE Managing Director | DOUGLAS C. BAKER Producing Director
 GORDON DAVIDSON Founding Artistic Director

Presents  production of

DRY LAND

Written By

Ruby Rae Spiegel

With

Daniel Hagen..... Janitor
Ben Horwitz Victor
Connor Kelly-Eiding Ester
Teagan Rose..... Amy
Jenny Soo..... Reba
**Jacqueline Besson, Alexandra Freeman, Bukola Ogunmola,
 Francesca O'Hern, Sidne Phillips, Tessa Hope Slovis**Swim Team

Scenic Design

Amanda Knehans

Costume Design

Elena Flores

Lighting Design

Justin Huen

Sound Design

Jeff Gardner

Center Theatre Group
 Associate Producer

Lindsay Allbaugh

Production Stage Manager

Anna Engelsman

Stage Manager

Maggie Swing

Directed By

Alana Dietze

Time/Place: The present. The locker room of a Florida high school.

Dry Land is performed without an intermission.

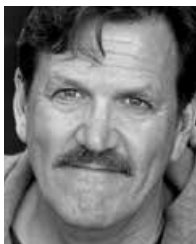
Dry Land received its Los Angeles premiere at The Echo Theater Company in April, 2016.
 CHRIS FIELDS, Artistic Director JESSE CANNADY, Producing Director

Dry Land was Originally Produced by Colt Coeur, New York, NY
 Developed at the Ojai Playwright Conference: Robert Egan, Artistic Director/Producer
 Developed with the support of New York Stage and Film's Powerhouse Season at Vassar.

Block Party receives major support from ALIZA KARNEY GUREN and MARC GUREN
 with generous funding also provided by JONI and MILES BENICKES.

MAY 12–21, 2017 **KIRK DOUGLAS THEATRE**

WHO'S WHO



DANIEL HAGEN (*Janitor*). The Echo Theater: *The Found Dog Ribbon Dance*, *Laileen on the Way Down*. Broadway: *The Nerd*. Tamarind Theatre: *MonuMENTAL Cruelty*. Manhattan Punch Line: *All in the Timing*, *Fellow Travelers*. Kennedy Center: *The Authentic Life of Billy the Kid*. Long Wharf Theatre: *A Month in the Country*. Champlain

Shakespeare: *The Taming of the Shrew*, *A Midsummer Night's Dream*. Burt Reynolds Dinner Theatre: *One Flew Over the Cuckoo's Nest*. Film: *The Informant!*, *Open House*, *For Love or Money*, *Wilder Napalm*. TV: *Feud*, *Rizzoli & Isles*, *NCIS*, *Buffy*, *Charmed*, *CSI*, *Friends*, *Seinfeld*.



BEN HORWITZ (*Victor*). L.A. theatre: *The Cherry Orchard* and *Twelfth Night* at City Shakespeare Company, *Picnic* at Antaeus Theatre, *Dry Land* at The Echo Theater Company, *A Wrinkle in Time* at Sierra Madre Playhouse. Web series: *A Bit Much*, *Fragility*, *Break a Hip* season 2. Film: *Looking for the Jackalope*.



CONNOR KELLY-EIDING (*Ester*). L.A. theatre: *Dry Land* (Ovation Award for Best Production, Intimate Theatre), *Apocalypse Play* (Moving Arts), *Picnic* (Antaeus Theatre), *Twelfth Night* (Shakespeare Center of Los Angeles), *Four Clowns presents Hamlet* (Four Clowns), *Nice Things* (Rogue Machine), among others. Film: *Locating Silver Lake*, *The Magnificent Room*,

and *Cause of Attraction* (short). TV: *House of Lies*. BFA in acting from the University of Southern California.



TEAGAN ROSE (*Amy*). L.A. theatre: *Dry Land* (Ovation Award for Best Production, Intimate Theatre), *White Guy on the Bus* (Road Theater Company). Indiana: *The Great Gatsby* (IRT). Chicago: *Thirty Thousand One* (Pursuit Productions). TV: *The Middle*, *Scandal* (ABC). Film: *Safe Bet* (short), *Thru Traffic* (short), *Still* (short). BFA in acting from the University of

Michigan. Love and gratitude to my family, Center Theatre Group, and this vibrant and powerful arts community.



JENNY SOO (*Reba*). L.A. theatre: *Up*, *Hot Cat*, *Niagara Falls*, *D Deb Debbie Deborah*. Regional: *Alice vs. Wonderland* (American Repertory Theater). TV: *Parks and Recreation*, *Murder in Mexico*. BFA: NYU. MFA: A.R.T./MXAT Institute for Advanced Theater Training at Harvard.



JACQUELINE BESSON (*Swim Team*) is a Los Angeles-based creative person, hailing from the San Francisco Bay Area. She is an associate member of The Echo Theater Company. Her credits with The Echo include *The Found Dog Ribbon Dance* (Trista u/s) and *Dry Land*. She is very excited to be a part of Center Theatre Group's Block Party and honored to be in *Dry Land* once again.



ALEXANDRA FREEMAN (*Swim Team*) splits her time between acting onstage/on-camera and stage managing corporate and private events, which also allows her to pursue her love of travel. Alexandra is the Company Manager and a member at The Echo Theater Company, where she recently appeared as Jill in *Blueberry Toast*.

www.alexandrafreeman.com



BUKOLA OGUNMOLA (*Swim Team*) is excited to make her debut with Center Theatre Group. She is a bicoastal actress currently studying at USC as a graduate acting student. Recent credits include *Our Lady of 121st Street* with Milton G. Bassin Performing Arts Center and the NYC premiere of *Teach For America* with the York College Theatre.



FRANCESCA O'HERN (*Swim Team*) is over the moon to be making her debut at Center Theatre Group. Recent credits include *Macbeth* at the British American Drama Academy and *The Vending Machine* at the University of Southern California. She is currently a rising senior at USC.



SIDNE PHILLIPS (*Swim Team*) is a junior at the University of Southern California, a devoted actor, and a novelist. Favorite roles include: Alithea in *The Country Wife* (BADA), Jo in *Little Women* (MTR), and Sandy in *Grease* (USC). Much love to friends and family, and big thanks to Center Theatre Group for the opportunity!



TESSA HOPE SLOVIS (*Swim Team*) is thrilled to be making her L.A. debut with Center Theatre Group! Select TV: *Law & Order: SVU*, *Breaking Bad*, *The Affair*. Select theatre: Berkshire Theatre Festival, The Flea Theater, The Robert Moss Theater. Her cabaret *Swipe Right/Swipe Left* has headlined at 54 Below. USC SDA MFA '19. www.tessahopeslovis.com

RUBY RAE SPIEGEL (*Playwright*). *Dry Land*, a finalist for the Susan Smith Blackburn Prize, premiered Off-Broadway in 2014 following development in New York Stage and Film's Powerhouse Theater Readings Festival and the Ojai Playwrights Conference. Ruby's play *Carrie & Francine* premiered in the Summer Shorts Festival in 2011 at 59E59 alongside work by Neil LaBute and Christopher Durang. Dubbed "the prodigy of Summer Shorts" by the Theatre Development Fund, she won Stephen Sondheim's Young Playwrights Inc.'s National Competition for the play (her second consecutive win after 2010's *All Ye Know*). Ruby is a writer on Netflix's original series *The OA*. She is a 2015 graduate of Yale University.

ALANA DIETZE (*Director*). Directing credits include: *Laila on the Way Down*, *A Small Fire* (four Ovation nominations), *Dry Land* (Ovation winner for Best Production 2016, Intimate Theatre; nomination for Best Leading Actress), and *The Found Dog Ribbon Dance*, all with The Echo Theater Company. Alana is also an actress with over 20 credits in Los Angeles' small theatres and serves as The Echo's Literary Manager. She is overjoyed and honored that *Dry Land* is part of Block Party's inaugural year.

AMANDA KNEHANS (*Scenic Design*) is a Los Angeles-based scenic designer and art director. Recent theatre credits include *Blueberry Toast*, *One of the Nice Ones*, and *A Small Fire* (The Echo Theater); *ICU* (Circle X); *Cafe Society* (The Odyssey); and *Kalamazoo* (Pacific Resident Theater). Recent film credits include assistant art director on *East Los High* season 4 (Hulu) and *Sing It!* season 1 (YouTube Red). Amanda is a member of the Art Directors Guild.

ELENA FLORES (*Costume Design*) is a 2015 MFA graduate of CSU, Long Beach and a frequent collaborator with The Echo Theater Company and Four Clowns. Recent credits: *White Flight* (Comedy Central), *The Found Dog Ribbon Dance* (The Echo Theater Company), *Lunatics & Actors* (Four Clowns), and *Tres Actos* (University of La Verne). She is delighted to be working with Center Theatre Group for the first time.

JUSTIN HUEN (*Lighting Design*) is an award-nominated actor/director/designer who has worked in intimate and regional theatres across the country. His lighting and scenic design were featured in 2015's Ovation-nominated production of *Proof* at Moth Theatre Company. Most recently, he designed the lights and sets for the premiere of *Mine* (Moth), a show he also directed.

JEFF GARDNER (*Sound Design*). Credits include *Trevor* at Circle X Theatre (Ovation Award for Best Production, 2015) and *The Recommendation* at IAMA Theatre Company (Ovation Award for Best Production, 2014). He has designed and performed throughout the country including Shakespeare Theatre Company, DC, The Studio Theatre, DC, A Noise Within, Rogue Machine Theatre, Sacred Fools, Antaeus Theatre Company,

The Colony Theatre, Odyssey Theatre, The Kennedy Center, and Williamstown Theatre Festival. Jeff can be seen at L.A. Theatre Works where he regularly performs.

ANNA ENGELSMAN (*Production Stage Manager*) is a graduate of the University of Massachusetts, Amherst department of theatre where she was trained as a stage and production manager. She has been working with The Echo Theater as General Manager and her most recent credits include stage managing *HOME/SICK* by The Assembly both at the Odyssey Theatre in Los Angeles and the JACK theatre in Brooklyn, *Blueberry Toast* by Mary Laws, and The Echo's original *Dry Land* by Ruby Rae Speigel.

MAGGIE SWING (*Stage Manager*). Center Theatre Group: *Vicuña*, *Throw Me On the Burnpile* and *Light Me Up*. Geffen Playhouse: *Big Sky*, *Barcelona*, *Guards at the Taj*, *Discord*, *The Country House*, *American Buffalo*. Boston Court: *Collective Rage*. European tour: *The Apple Family Plays*. Off-Broadway: *Regular Singing*, *Sorry*, *Love's Labour's Lost*, *Sweet and Sad*, *Knickerbocker*, *Compulsion*, *That Hopey Changey Thing* (The Public Theater), *Slowgirl* (Lincoln Center), *Blood Knot*, *The Orphans' Home Cycle* (Signature Theatre Company). Regional: various productions at Long Wharf Theatre and Hartford Stage Company.

THE ECHO THEATER COMPANY. Dedicated to nurturing writers and producing new work, the multiple award-winning Echo Theater Company was anointed "Best Bet for Ballsy Original Plays" by *L.A. Weekly* in its 2014 Best of L.A. issue and was a recipient of a 2016 "Kilroy Cake Drop"—one of only 13 theatres in the country to be surprised by cakes to honor the efforts they are making to produce women and transgender writers. Under the leadership of Founding Artistic Director Chris Fields, The Echo has introduced Los Angeles to playwrights such as David Lindsay-Abaire, Adam Rapp, Sarah Ruhl, Adam Bock, and Miki Johnson among many others.

ADDITIONAL STAFF

Ahmed Best Fight Choreographer

Dry Land is presented by special arrangement with Dramatists Play Service, Inc., New York.

THE ECHO THEATER COMPANY STAFF

Chris Fields.....Artistic Director
 Jennifer Chambers.....Associate Artistic Director
 Jesse Cannady Producing Director
 Alana Dietze Literary Manager
 Andrew ShaferDirector of New Programs
 Alexandra Freeman..... Company Manager
 Anna EnglesmanGeneral Manager
 Lucy PollakPress Representative

CENTER THEATRE GROUP

MICHAEL RITCHIE (*Artistic Director*) is in his 12TH season as Center Theatre Group's Artistic Director, and has led over 190 productions to the Ahmanson Theatre, Mark Taper Forum, and Kirk Douglas Theatre stages including the premieres of six musicals that moved to Broadway—*The Drowsy Chaperone*, *Curtains*, *13, 9 to 5: The Musical*, *Bloody Bloody Andrew Jackson*, and *Leap of Faith*—and the Pulitzer Prize in Drama finalist *Bengal Tiger at the Baghdad Zoo*.

STEPHEN D. ROUNTREE (*Managing Director*) joined Center Theatre Group in 2014 as its Managing Director. He was previously the President and CEO of The Music Center (2002–2014) and concurrently the CEO of the Los Angeles Opera (2008–2012). He served the J. Paul Getty Trust for 22 years, starting in 1980 as Deputy Director of the Getty Museum, then Director of the Getty Center Building Program, and in 1998, the Executive Vice President and Chief Operating Officer for the Getty Trust. He currently serves as a trustee of Occidental College, The Ahmanson Foundation, Children's Hospital of Los Angeles, and Polytechnic School.

DOUGLAS C. BAKER (*Producing Director*) is now in his 27TH season at Center Theatre Group. He is an active member of the Broadway League, the Independent Presenters Network, and is a proud member of the Association of Theatrical Press Agents and Managers. In May 2013, Doug received the Broadway League's prestigious Outstanding Achievement in Presenter Management Award.

LINDSAY ALLBAUGH (*Associate Producer*) is a member of Center Theatre Group's artistic staff and has served in varying capacities for the past 13 years. Selected producing credits include—Mark Taper Forum: the upcoming world premiere of *Archduke* by Rajiv Joseph, *Bent*, *What the Butler Saw*, *Steward of Christendom*, *Waiting for Godot*; Kirk Douglas Theatre: *Block Party*, *Good Grief*, *Vicuna*, *Throw Me On the Burndale and Light Me Up*, *Endgame*, *Women Laughing Alone With Salad*, *Chavez Ravine*, *Race*, *different words for the same thing*, *The Nether*. Co-Artistic Director of the Elephant Theatre 2004–2014.

NAUSICA STERGIU (*General Manager, Mark Taper Forum and Kirk Douglas Theatre*) has worked professionally supporting artists in theatres of all shapes, sizes, and locales including many seasons at Center Theatre Group as General Manager and, previously, as Audience Development Director. She oversees mainstage productions at the Taper and Douglas, as well as new play commissions and developmental productions through Center Theatre Group's New Play Development. Nausica has taught at USC's School of Dramatic Arts, and advises and works with local nonprofits including Hollywood Orchard.

GORDON DAVIDSON (*Founding Artistic Director*) led the Taper throughout its first 38 seasons, guiding over 300 productions to its stage and winning countless awards for himself and the theatre—including the Tony Award for theatrical excellence, Margo Jones Award, The Governor's Award for the Arts, and a Guggenheim fellowship. *The Kentucky Cycle* and *Angels in America (Part One)* won the Pulitzer in consecutive years and, in 1994, three of the four plays nominated for the Tony Award for Best Play were from the Taper (*Angels in America* won). In 1989, Gordon took over the Ahmanson and, in 2004, he produced the inaugural season in the Kirk Douglas Theatre.

ONLINE

Center Theatre Group **#CTGLABlockParty**
Like us on Facebook **Center Theatre Group**
Follow us on Twitter **@CTGLA**
Subscribe on YouTube **CTGLA**
Follow us on Instagram **@CTGLA**



The Actors and Stage Managers employed in this production are members of Actors' Equity Association, the Union of Professional Actors and Stage Managers of the United States. This theatre operates under an agreement between the League of Resident Theatres and Actors' Equity Association, the Union of Professional Actors and Stage Managers in the United States.



The Director and Choreographer are members of the Stage Directors and Choreographers Society, an independent national labor union.



Center Theatre Group is a member of the League of Resident Theatres (LORT), the American Arts Alliance, the Broadway League, Independent Producers' Network (IPN), LA Stage Alliance, National Alliance for Musical Theatre (NAMT) and the Theatre Communications Group (TCG).

ADDITIONAL STAFF FOR BLOCK PARTY

Carpentry Crew..... Richard Dunn, Bo Foxworth,
Kate Harrow, Connor Hayes, Mary Karcz,
Randy Pound, Philip Rossi
Electrics CrewDaniel del Busto, Juan Lozano, Lunchbox,
Alif Marchi, Darci Murphy, Vanessa Rodriguez,
Michelle Stann, Lauren Wemischer
Scenic Artists..... Jacquelyn Gutierrez, Orlando de La Paz,
Katie Polebaum
Assistant Lighting Designer Meghan Hong
Assistant Costume Designer.....Whitney Oppenheimer
Production CoordinatorBrooke Baldwin
Prop Artisan.....Eric Babb
TailorSwantje Tuohino
First Hand Pamela Walt
StitchersStephanie Molstad, Jennifer Wolff
Costume Stock Attendant..... Heidi Johnson

FRONT-OF-HOUSE LEADS

Trevor Algatt, Bradford Barnes, Carmen Echevarria, Stephen Lydic, AJ Meijer, Eduardo Fernandez-Bauman, Tarah Pollock

CONCIERGES

Olivia Choate, Eric Eberle, Amber Espinosa-Jones, Angela Garcia, Joan Kubicek, Sarah Lindsley, Adrienne Marquand, Chelsey Maus, Janice Motuapuaka, Nicole Naito, Daniel Rashid, Denise Reynoso, Leve Ross, Diana Spieller, Jor-el Vaasborg

DISCUSSION LEADERS

Chase Anderson-Shaw, Candice Clasby, Eduardo Fernandez-Baumann, Jay Lee, Stephen Lydic, Isabella Petrini, Tarah Pollock

CONCESSIONS

Abilene Gonzalez, Monica Greene, Mike Lanahan, JoAnn Mendelson, Jason Vaughn

STAGE DOOR ATTENDANTS

Ben Durham, Michael Hanson, Ian Ray, Cory Aycock

CREDITS

Sets, props, and additional costumes provided by the Center Theatre Group Shop. Center Theatre Group production photography by Craig Schwartz.



The free, open-to-the-public Block Party Kick-off Event on January 30, 2017 at the Kirk Douglas Theatre.



MICHAEL RITCHIE Artistic Director | **STEPHEN D. ROUNTREE** Managing Director
DOUGLAS C. BAKER Producing Director

Center Theatre Group would like to thank its exceptional staff for their ongoing commitment, dedication and extraordinary efforts.

ARTISTIC

NEEL KELLER Associate Artistic Director
 KELLEY KIRKPATRICK Associate Artistic Director
 DIANE RODRIGUEZ Associate Artistic Director
 LINDSAY ALLBAUGH Associate Producer
 PATRICIA GARZA Artistic Development Program Manager
 BEATRICE BASSO New Work Advisor
 JOY MEADS Literary Manager/Artistic Engagement Strategist
 ANDREW LYNFORD Casting Associate
 IAN-JULIAN WILLIAMS Program Coordinator, Block Party

DAVID ADJMI (FADIMAN), SHEILA CALLAGHAN (FADIMAN), STEVE CUIFFO, JUSTIN ELLINGTON, WILL ENO (FADIMAN), MATT GOULD, DANA J GURIRA, JENNIFER HALEY, DAVID HENRY HWANG, JOE ICONIS, NAOMI IIZUKA, BRANDEN JACOBS-JENKINS, RAJIV JOSEPH, KIMBER LEE, GRIFFIN MATTHEWS, LAURAL MEADE, RICHARD MONTOYA, DAN O'BRIEN, DENIS O'HARE, LEE OVERTREE, LISA PETERSON, PLAYWRIGHTS ARENA, WILL POWER (FADIMAN), RIMINI PROTOKOLL, RAINPAN 43, MARCO RAMIREZ, KEN ROHT, MATT SAX, ROGER GUENVEUR SMITH, RIPE TIME, TRACEY SCOTT WILSON (FADIMAN)..... Commissioned Artists

ELIZA CLARK, FRANCES YA-CHU COWHIG, DOMINIQUE MORISSEAU, DAVID MYERS, QUI NGUYEN, HERBERT SIGUENZA, DEBORAH STEIN L.A. Writers' Workshop Members

EDUCATION AND COMMUNITY PARTNERSHIPS

LESLIE K. JOHNSON Director of Social Strategy, Innovation and Impact
 KATHRYN MACKENZIE Department Operations Director
 TRACI KWON Arts Education Initiatives Director
 CAMILLE SCHENKKAN Next Generation Initiatives Director
 JESUS REYES Community Partnerships Director
 ADAM NICOLAI Arts Education Program Manager
 FELIPE M. SANCHEZ Emerging Arts and Arts Professionals Program Associate
 JENNIFER HARRELL Operations Assistant
 KHANISHA FOSTER Resident Teaching Artist
 DEBRA PIVER Resident Teaching Artist

MANAGEMENT AND ADMINISTRATION

NAUSICA STERGIOU General Manager (Mark Taper Forum, Kirk Douglas Theatre)
 JEFFREY UPAH General Manager (Ahmanson Theatre)
 KATIE SOFF Asst General Manager (Mark Taper Forum, Kirk Douglas Theatre, NPD)
 CASEY MCDERMOTT General Management Associate
 MEGAN ALVORD Company Manager (Mark Taper Forum, Kirk Douglas Theatre)
 ERIC SIMS Director of Theatre Operations (Kirk Douglas Theatre)
 TOM BURMESTER Audience Experience Design/ Front of House Manager (Kirk Douglas Theatre)
 MAX OKEN Facility Manager (Kirk Douglas Theatre)
 JAQUELYN JOHNSON Associate Audience Experience Designer (Kirk Douglas Theatre, Mark Taper Forum)
 LAUREN BAXA Assistant Performance Manager (Kirk Douglas Theatre)
 SONDR MAYER Concessions Manager (Kirk Douglas Theatre)
 ALANA BEIDELMAN Executive Assistant to the Artistic Director
 EVELYN STAFFORD Executive Assistant to the Managing Director

PRODUCTION

DAWN HOLISKI Production Department Operations Director
 JOE HAMLIN Technical Director/ Ahmanson Production Manager
 SHAWN ANDERSON Master Carpenter (Ahmanson Theatre)
 STAN STEELMON Master Propertyman (Ahmanson Theatre)
 JIM BERGER Master Electrician (Ahmanson Theatre)
 ROBERT SMITH Master Soundman (Ahmanson Theatre)
 MICHAEL GARDNER Wardrobe Supervisor (Ahmanson Theatre)
 PATRICE K. MADRIGAL Hair and Make-up Supervisor (Ahmanson Theatre)
 CHRISTINE L. COX House Manager (Ahmanson Theatre)
 JONATHAN BARLOW LEE Production Manager (Mark Taper Forum)
 KATE COLTUN Associate Production Manager (Mark Taper Forum)
 EMMET KAISER Master Carpenter (Mark Taper Forum)
 ROBERT RUBY Master Propertyman (Mark Taper Forum)

WILLIAM MORNER Master Electrician (Mark Taper Forum)
 BONES MALONE Master Soundman (Mark Taper Forum)
 DENNIS SEETO Wardrobe Supervisor (Mark Taper Forum)
 RICK GEYER Hair & Make-up Supervisor (Mark Taper Forum)
 LINDA WALKER House Manager (Mark Taper Forum)

CHRISTY WEIKEL Production Manager (Kirk Douglas Theatre)
 CHRISTOPHER REARDON Assistant Production Manager (Kirk Douglas Theatre)

AARON STAUBACH Master Electrician (Kirk Douglas Theatre)

ADAM PHALEN Head Audio (Kirk Douglas Theatre)
 SEAN MEYER Light Board Programmer and Operator (Kirk Douglas Theatre)

KATIE POLEBAUM Stage Supervisor (Kirk Douglas Theatre)
 CAMBRA CHICHI Wardrobe Supervisor (Kirk Douglas Theatre)

KRYSTIN MATSUMOTO Assistant Production Manager
 CHAD SMITH Associate Technical Director
 LEE O'REILLY Assistant Technical Director
 SEAN KLOC Shop Foreman

ANDREW THIELS Prop Director
 MERRIANNE NEDREBERG Associate Prop Manager
 JON WARD Associate Prop Manager
 CANDICE CAIN Costume Director
 BRENT M. BRUIN Costume Shop Manager
 MADDIE KELLER Costume Generalist
 WHITNEY OPPENHEIMER Shop Assistant
 SWANTJE TUOHINO Tailor
 ELIZABETH LEONARD Facilities Manager
 JULIO A. CUELLAR Driver/Custodian
 DONAVAN MARTINELLI, BRIAN SLATEN Drivers
 PETER WYLIE Production Coordinator

FINANCE, INFORMATION SYSTEMS AND HUMAN RESOURCES

CHERYL SHEPHERD Chief Financial Officer
 SUZANNE BROWN Controller
 JANIS BOWBEER Assistant Controller
 XOCHITL RAMIREZ Accounts Payable Coordinator
 ALEGRIA SENA Staff Accountant
 SHYNASTY WILKES Staff Accountant
 AMEETA SHARMA Payroll Manager
 JEFF LOUIE Payroll Specialist

STAN GRUSHESKY Director of Information Systems
 MANDY RATLIFF Sr. Database & Web Administrator
 ASH LEWIS Help Desk Administrator

JODY HORWITZ Director of Human Resources
 P.J. PHILLIPS Senior Human Resources Generalist
 SINGER LEWAK, LLP Auditor
 MICHAEL C. DONALDSON, LISA A. CALLIF Legal Counsel
 GIBSON, DUNN & CRUTCHER Legal Counsel

INSTITUTIONAL ADVANCEMENT

YVONNE CARLSON BELL Director of Institutional Advancement
 PATRICK OWEN Deputy Director of Institutional Advancement
 NATALIE BERGESON Director of Donor Engagement
 LIZ LIN Director of Development Artist and Entertainment Relations
 CHARITY WU Director of Major Gifts Stewardship
 BECKY BIRDSONG Major Gifts and Planned Giving Officer
 KATY HILTON Associate Director of Foundation and Government Support
 LAURA HITE Manager of Major Gifts
 DANIELLE LESNER Associate Director of Donor Engagement
 MANDI OR Associate Director of Special Events
 ROBBIE MARTIN Associate Director of Corporate Relations
 JENNIFER CHAN Special Events Coordinator
 DONALD JOLLY Donor Experience Coordinator
 JAZMINE JONES Donor Relations Coordinator
 PAUL LUOMA Artist and Entertainment Relations Specialist
 KIM OKAMURA Grants Manager
 EMILY GIBSON Institutional Advancement Research Associate
 ERIN SCHLABACH Manager of Major Gifts Stewardship
 ERIC SEPPALA Board Liaison and Executive Assistant to the Director of Institutional Advancement
 MATTHEW SUTPHIN Institutional Advancement Associate

KRISTIN YAMAKA Corporate Relations Coordinator
 EDUARDO MOLLINADO-PIÑÓN Donor Membership Coordinator
 MIKE RATTERMAN Donor Advisor Supervisor
 AL BERMAN, JOHN COPELAND, ELIZABETH DELLORUSSO, DAVID GARVER, MATT RITCHEY, BENJAMIN SCHWARTZ, NICOLE SCIPIONE, PAUL VITAGLIANO Donor Advisors
 KARLA GALVEZ, JUSTINE PEREZ Donor Services Associates
 WAUKENA CUYJET, MURRAY E. HELTZER, JULIE NADAL Development Volunteers

MARKETING

DEBORAH WARREN Director of Marketing
 KYLE HALL Advertising & Promotions Director
 GARRETT COLLINS Senior Marketing Manager, Strategy & CRM
 ARIE LEVINE Senior Marketing Manager, Ahmanson & Mark Taper Forum
 KIYOMI EMI Marketing Manager, Promotions & Events
 EMYLI GUDMUNDSON Marketing Manager, Kirk Douglas Theatre
 JOHN POTTER Executive Assistant

DEANNA MCCLURE Art Director
 IRENE T. KANESHIRO Senior Design Manager
 JAVIER VASQUEZ Graphic Designer
 TARA NITZ Graphic Designer

COMMUNICATIONS

JAMES SIMS Director of Communications
 JASON MARTIN Head of Publicity
 PHYLLIS MOBERLY Senior Publicist
 KRISTI AVILA Junior Publicist
 SAVANNAH L. BARKER Junior Publicist
 SARAH ROTHBARD Senior Manager, Communications and Editorial
 JOHN JOHNSON Communications Coordinator
 ARIELLE LAUB Communications Coordinator
 SARAH GOLDBAUM Digital Media Specialist
 HAL BANFIELD Multimedia Producer

TICKET SALES AND SERVICES

SHAWN ROBERTSON Ticket Sales Director
 SKYPP CABANAS Ticket Operations Manager
 RACHYL UNDERWOOD Ticket Operations Coordinator

MICHAEL ZOLDESSY Account Sales Manager
 TRICIA GUNTER Account Sales Coordinator

SANDY CZUBIAK Audience and Subscriber Services Director

JENNIFER BAKER, CHERYL HAWKER, RICHARD RAGSDALE Audience Services Supervisors
 ALICE CHEN Audience Services Asst. Supervisor
 GARY HOLLAND, DEBORAH REED Audience Services Sales Associates

SAM AARON, JEREMIE ARENCIBIA, KIMBERLY ARENCIBIA, VICKI BERNDT, CARLOS D. CHAVEZ, JR., MICHAEL ESPINOZA, ANASTASHIA GARCIA, EILEEN PEREZ, LEX SAVKO, TEVIN WILLIAMS Audience Services Representatives

DANUTA SIEMAK Subscriber Services Supervisor
 CHRISTINA GUTIERREZ Subscriber Services Asst. Supervisor
 IRENE CHUANG, LIGIA PISTE, PETER STALLOCH Subscriber Services Senior Representatives

SARAH K. GONTA Box Office Treasurer
 ANGELICA CARBAJAL, KISHISA ROSS Assistant Treasurers
 MICHAEL KEMPISTY, KEVIN LAUVER, LEROY PAWLOWSKI, MICHAEL SALTZMAN, CRIS SPACCA Box Office Staff

KERRY KORF Priority Services Director
 SUSAN F. TULLER Priority Services Operations Manager
 CANDICE WALTERS Priority Services Sales Manager
 PAUL CUEN Priority Services Manager
 KRISTEN SCHRASS Priority Services Assistant Supervisor
 BEAELNE AHERN, CLAY BUNKER, GABI BON DURANT, JOHN CARROLL, ESTEBAN CRUZ, MAGGIE DODD, NATALIE DRESSEL, SOFIA DUTCHER, MARC "BYRON" DROTMAN, FRANK ENSEMBERGER, LOU GEORGE, SHEP KOSTER, JORDAN KRISNAK, IAN PRICE, MICHAEL SMITH, JEFFREY STUBBLEFIELD, DIANE WARD Representatives

INTERNS

DERICK BELTRAN, TARA GRIFFO, JALISA JACKSON, FATIMA JIMENEZ, KRISTINE NGO, ASHLEY NNEBE, AMMY ONTIVEROS, ARIANNE OUSLEY, TIFFANY SLAGLE, BRITNEY THAI, MAYA WILLIAMS