

Mark Taper Forum 48th Season 2015



FIRST SEASON PRODUCTION

The Price

By Arthur Miller
Directed by Garry Hynes.
February 11 – March 22, 2015

SECOND SEASON PRODUCTION

Immediate Family

By Paul Oakley Stovall
Directed by Phylicia Rashad.
April 22 – June 7, 2015

THIRD SEASON PRODUCTION

Bent

By Martin Sherman
Directed by Moisés Kaufman.
July 15 – August 23, 2015

FOURTH SEASON PRODUCTION

Appropriate

By Branden Jacobs-Jenkins
Directed by Eric Ting
West Coast Premiere.
September 23 – November 1, 2015

FIFTH SEASON PRODUCTION

The Christians

By Lucas Hnath
Directed by Les Waters
West Coast Premiere.
December 2, 2015 – January 10, 2016

Inspiring Our Future

Special Thanks to Center Theatre Group's Most Generous Annual Patrons

Center Theatre Group wishes to thank the following donors for their significant gifts and for their belief in the transformative power of theatre.

\$1 MILLION AND ABOVE

The Ahmanson Foundation
Brindell Roberts Gottlieb

\$250,000 AND ABOVE

Center Theatre Group Affiliates
Kirk & Anne Douglas
The James Irvine Foundation
The Andrew W. Mellon Foundation

\$150,000 AND ABOVE

Anonymous
Bank of America
The Blue Ribbon
Patricia Glaser & Sam Mudie
Laura & James Rosenwald & Orinoco Foundation
The Shubert Foundation, Inc.
Wells Fargo Foundation

\$100,000 AND ABOVE

Annenberg Foundation
Ann & Stephen F. Hinchliffe, Jr.
JPMorgan Chase & Co.
The Norman and Sadie Lee Foundation
Los Angeles County Arts Commission
Renee & Meyer Luskin
Deena & Edward Nahmias
Deidra Norman Schumann
Eva & Marc Stern
Sue Tsao

\$75,000 AND ABOVE

Elisabeth Katte Harris Trust
William Randolph Hearst Foundation
The Ralph M. Parsons Foundation
Lloyd E. Rigler — Lawrence E. Deutsch Foundation

This list includes cash gifts received by Center Theatre Group between
November 9, 2013, and January 9, 2015.



Center Theatre Group
L.A.'s Theatre Company

Ahmanson Theatre
Mark Taper Forum
Kirk Douglas Theatre

Michael Ritchie, ARTISTIC DIRECTOR **Stephen D. Rountree**, MANAGING DIRECTOR **Douglas C. Baker**, PRODUCING DIRECTOR
Gordon Davidson, FOUNDING ARTISTIC DIRECTOR

PRESENTS

THE PRICE

BY

Arthur Miller

WITH

(in alphabetical order)

Kate Burton.....**Esther Franz**
John Bedford Lloyd.....**Walter Franz**
Alan Mandell.....**Gregory Solomon**
Sam Robards.....**Victor Franz**

Set Design

Matt Saunders

Costume Design

Terese Wadden

Lighting Design

James F. Ingalls

Sound Design

Cricket S. Myers

Casting By

Meg Fister

Associate Artistic Director

Kelley Kirkpatrick

Production Stage Manager

David S. Franklin

Stage Manager

Susie Walsh

DIRECTED BY

Garry Hynes

UNDERSTUDIES

Understudies never substitute for listed performers unless a specific announcement is made at the time of the performance.

For Gregory Solomon: **Tony Abatemarco**; For Esther Franz: **Susan Wilder**; For Victor/Walter Franz: **Robert Yacko**.

PLACE: New York • TIME: Mid-1960s

There will be one 15-minute intermission.

The Los Angeles engagement of *The Price* is generously supported in part by Artistic Director's Circle member Deidra Norman Schumann.

February 11 – March 22, 2015
Mark Taper Forum

The Value

In 1968, the year that *The Price* debuted, \$1 was worth the equivalent of \$6.79 today: A \$2.50 movie ticket would be equal to \$17 today; Walter's \$3,000 estimate for the furniture would be equivalent to \$20,000 today, and his \$25,000 estimate for tax purposes would be nearly \$170,000. Additionally, the \$1 million pre-Depression fortune of Victor and Walter's father would be worth over \$25 million.

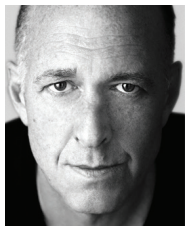
Who's Who



KATE BURTON

(*Esther Franz*). CTG: *The House of Blue Leaves*, *Arcadia*, *Jake's Women*, *Wild Honey*. Broadway: Tony nominations for *Hedda Gabler*,

The Elephant Man and *The Constant Wife* also *The Beauty Queen of Leenane* (directed by Garry Hynes), *Some Americans Abroad* (with John Bedford Lloyd and stage manager, Michael Ritchie) and *Present Laughter* (stage managed by Mr. Ritchie) among others. Also with Mr. Lloyd, three years at the Yale School of Drama as well as *The Winter's Tale* and *A Midsummer Night's Dream* at Williamstown. With Sam Robards, a New York City childhood and *Misalliance* by Bernard Shaw. She was in *Three Sisters* in London's West End and in the UK/Ireland tour of *Beauty Queen*. Winner of Boston's Elliot Norton for her work at The Huntington in *The Corn is Green* (Best Actress) and *The Seagull* (Best Ensemble), appearing in both with her son, Morgan Ritchie. Film: *2 Days in NY*, *Liberal Arts*, *127 Hours*, *Unfaithful*, *Ice Storm* and *Big Trouble in Little China* among others. TV: *Empire Falls*, *Veep*, *Grimm*, *The Good Wife*, *The West Wing*, *Law & Order* and Emmy nominations for *Scandal* and *Grey's Anatomy*. She is a recipient of an Honorary Doctorate from Brown University, her alma mater, and serves on The Brown Corporation. She lives in Los Angeles with her husband, CTG Artistic Director Michael Ritchie, and their daughter, Charlotte. For Nicky.



JOHN BEDFORD LLOYD

(*Walter Franz*). Broadway: *Some Americans Abroad*, *The Rainmaker*, *Tartuffe*. Carnegie Hall: *Showboat*.

Off-Broadway: Ethan Coen's *Offices* at the Atlantic Theater Company. Williamstown: six seasons. Guthrie Theater: Arthur Miller's *Resurrection Blues* (world premiere). Westport Playhouse: *The Drawer Boy*. Barrington Stage Company: *The Best of Enemies*. Television: *The Divide*, *John Adams*, *The Bronx is Burning*, *Remember WENN* (Screen Actors Guild Award nomination). Film: *Super Troopers*, *Crossing Delancey*, *Tough Guys Don't Dance*, *Nixon*, *The Abyss*, *The Bourne Supremacy*, *Philadelphia*, *The Manchurian Candidate*, *The Hoax*, *Wall Street: Money Never Sleeps*, *Muhammad Ali's Greatest Fight*, *Lily of the Feast*, *His Last Game* and *No Pay, Nudity*. Mr. Lloyd volunteers with Rehabilitation Through the Arts, a theatre outreach program operating inside New York State prisons.



ALAN MANDELL

(*Gregory Solomon*) has had a distinguished 80-year acting career and is an accomplished voice-over actor.

He is a founding member of the famed San Francisco Actor's Workshop, and co-founder with Rick Cluchey of the San Quentin Drama Workshop, which started in 1957 with a performance of *Waiting for Godot* inside the prison. Mandell toured Europe with original productions of *Godot* and *Endgame* directed by Beckett. He re-created Beckett's direction for the filming of *Endgame* and also performed in *Endgame* at Dublin's Abbey Theatre and in London and Italy. Broadway: *Impossible Marriage*. Off-Broadway: *The Beard of Avon* and *Godot*. He toured with *Twelve Angry Men* (presented at the Ahmanson Theatre). Regional:

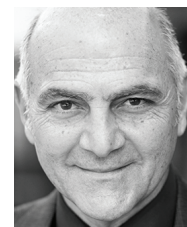
No Man's Land (Ovation Award – Odyssey Theatre), *Restoration* (La Jolla Playhouse, New York Theatre Workshop), *The Cherry Orchard* (Taper) and *Trying* (Ovation Award – Colony Theatre Company). Films: *The Marrying Man*, *Midnight Witness*, *Hedwig and the Angry Inch*, *Shortbus* and *A Serious Man*. Television: *Grey's Anatomy*. He has been a producer on and off-Broadway, general manager of the Repertory Theater of Lincoln Center, consulting director at LATC and taught at UCLA's Graduate School of Management.



SAM ROBARDS

(*Victor Franz*). Theatre: Broadway – *The Man Who Had All The Luck* (Tony and Drama Desk nominations), *The 39 Steps*, *Absurd*

Person Singular; Off-Broadway – *The Overwhelming*, *Misalliance*, *The Altruists*, *Taking Steps*, *Album*; Regional – *The Talking Cure*, *Bell Book and Candle*, *Japes*, *Burn This*, *The Philadelphia Story*. Film: *The Art of Getting By*, *The Rebound*, *Awake*, *Pret-a-Porter*, *Che: Part One*, *Mrs. Parker and the Vicious Circle*, *American Beauty*, *Bounce*, *Life as a House*, *A.I. Artificial Intelligence*, *Beautiful Girls*, *Casualties of War*, *Bird*, *Bright Lights*, *Big City*, *Company Retreat*, *Perestroika*, *Dinner and Driving*, *The Ballad of Little Jo*, *The Other Side of the Tracks*, *Not Quite Paradise*, *Fandango*, *Tempest*. Television: *Treme*, *The West Wing*, *Get a Life*, *Maximum Bob*, *Twisted*, *TV 101*, *Gossip Girl*, *Spin City*, *The Good Wife*, *Sex and the City*, *Law & Order*.



TONY ABATEMARCO

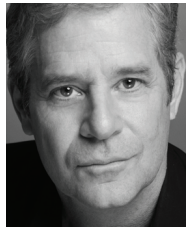
(*Understudy for Gregory Solomon*). Co-Artistic Director: Skylight Theatre Company. Awards:

Ovation (Lead Performance – *Irma Vep*), LA Weekly (multiple), two NEA Directing Fellowships and three-time L.A. Drama Critics' nominee (Lead), most recently for Rothko in *Red* at ICT, Long Beach. Member: Antaeus. Director: A&E TV & Broadway (Julie Harris in *Lucifer's Child*) and London West End (Robyn Peterson's *Catwalk Confidential*). On camera: 63 appearances - Film: *Beverly Hills Ninja 2*, *Town & Country*, *Sleeping with the Enemy*, etc. TV Guest: *The L Word*, *E.R.*, *Frasier*, etc. and last year, four concurrent national commercials. Teacher: USC (Acting) and SMC Emeritus. His plays have won LA Weekly and Drama-Logue awards. His play *Beautiful* had its world premiere at Skylight Theatre in 2012, and his latest, *Forever House*, will premiere there in 2015.



SUSAN WILDER (*Understudy for Esther Franz*) has worked at Lincoln Center in *King Lear* (with Christopher Plummer), *Ivanov* (with Kevin Kline),

Far East and *The Grand Manner*. Regional credits include *Other Desert Cities* at the Walnut Street Theatre, *Heartbreak House* at Berkeley Rep, *Orson's Shadow* at Philadelphia Theatre Company, *The Magic Fire* at The Wilma, *A Little Night Music* and *As You Like It* at the Arden, *Humble Boy* at People's Light & Theatre Company and *Ivanov* at the Studio Theatre in Washington, D.C. Film and television credits include *How to Get Away With Murder*, *Danni Lowinski*, *Hack*, *Perry Mason*, *Spencer: For Hire*, *Equal Justice*, *The Best and the Brightest*, *Unbreakable*, *The Silence at Bethany* and *Big*. MFA in Classical Acting, George Washington University.



ROBERT YACKO (*Understudy for Victor, Walter Franz*). Broadway and National Tour: *Fiddler on the Roof* (with Herschel Bernardi). Off-

Broadway: *Oh, What A Lovely War!*, *The Miser*. CTG: *Parade*, *Undiscovered Country*, *Wild Oats*, *Moby Dick Rehearsed* (Mark Taper Forum), *A Little Night Music* (Doolittle Theatre). Regional: *Ragtime*, *Tickled Pink* (with Rita Rudner), *Legacy of Light*, *Distracted*, *Chicago*, *Bernstein's Peter Pan*, *Splitting Infinity*, *Sylvia*, *Can Can* (revised), *Five Course Love*, *The Real Thing*, *Company* (with Carol Burnett), *Into the Woods* (with Leslie Uggams), *The Secret Garden*, *Chess*, *Sunday in the Park with George* (L.A. premiere), *Romance*, *Romance* (West Coast premiere), *Marry Me a Little*. Film: *Raising Helen*, *Life in a Perfect World*. TV: *The Closer*, *General Hospital*, *Picket Fences*, *Golden Girls*, *Get A Life*.

ARTHUR MILLER (*Playwright*). The plays of Arthur Miller (1915-2005) include *The Man Who Had All the Luck* (1944), *All My Sons* (1947), *Death of a Salesman* (1949), *The Crucible* (1953), *A View From the Bridge* and *A Memory of Two Mondays* (1955), *After the Fall* and *Incident at Vichy* (1964), *The Price* (1968), *The Creation of the World and Other Business* (1972), *The Archbishop's Ceiling* (1977) and *The American Clock* (1980 – presented in its West Coast premiere at the Mark Taper Forum in 1984), among others. He wrote the screenplay for *The Misfits* (1960) and several books including three with his wife, photographer Inge Morath. He received countless awards including the Pulitzer Prize (for *Death of a Salesman*), three Tony Awards as well as a Tony Award for

Lifetime Achievement, two Emmy Awards and the John F. Kennedy Lifetime Achievement Award.

GARRY HYNES (*Director*) founded Druid Theatre Company in 1975 and has worked as its Artistic Director from 1975 to 1991, and from 1995 to date. From 1991 to 1994 she was Artistic Director of the Abbey Theatre, Dublin. Internationally, Garry has worked with The Royal Shakespeare Company and The Royal Court (UK), and with Second Stage, Signature Theatre and Manhattan Theatre Club in New York; with The Kennedy Center in Washington, D.C., and recently she directed Leoš Janáček's *Kát'a Kabanová* for the Spoleto Festival (USA). Awards include a Tony Award for Direction for *The Beauty Queen of Leenane* (1998), the Joe A. Callaway Award for Outstanding Direction for *The Cripple of Inishmaan* by Martin McDonagh (2009), a Special Tribute Award for her contribution to Irish Theatre (2005) and Best Director at UK Theatre Awards 2012. In December 2010, Garry was appointed Adjunct Professor of Drama and Theatre Studies at her alma mater, NUI Galway.

MATT SAUNDERS (*Set Design*). Recent off-Broadway work has included *Good Person of Szechwan* at the Public Theater, *The Tempest* for the Public Theater at the Delacorte, and *As You Like It* for the Acting Company at The New Victory and Lincoln Center. Regionally, Saunders has designed at the Guthrie Theater, Huntington Theatre Company, Berkeley Repertory Theatre, Yale Repertory Theatre, Actors Theatre of Louisville, Children's Theatre Company in Minneapolis, Spoleto Festival, The Wilma Theater, Arden Theatre Company, Pig Iron Theatre Company and The Philadelphia Theatre Company. Saunders holds an MFA from Yale School of Drama,

is a 2014 Pew Fellow in the Arts and a 2015 Hodder Fellow at Princeton University. Matt is the Associate Artistic Director of the Obie Award-winning theatre company, New Paradise Laboratories, and the Assistant Professor of Design in the Department of Theater at Swarthmore College.
www.mattsanders.net.

TERESE WADDEN (*Costume Design*). Terese recently collaborated with Garry Hynes on *Kát'a Kabanová* (Spoleto Festival USA). Her past projects include *The Source* (BAM), *Lizzie Borden* (Boston Lyric Opera and Tanglewood), *New Work for the Desert* (NYLA), *Dialogues of the Carmelites* (Curtis Institute/Opera Philadelphia) and *Sunday in the Park With George* (Short North Stage). She has designed costumes for *Eternal* (Incubator Arts Project and Under the Radar Festival), *House For Sale* (Transport Group), *As You Like It* (The Acting Company), *A Florentine Tragedy & Gianni Schicchi* (Canadian Opera Company – Dora Award nomination), *Così fan Tutte* (New York City Opera), *Don Giovanni* (New York City Opera and Portland Opera), *La Clemenza di Tito* (Canadian Opera Company and Chicago Opera Theater) and Elliot Carter's only opera, *What Next?* (The Miller Theatre at Columbia University). She has also collaborated with the architectural firm Diller Scofidio + Renfro on the exhibit, *How Wine Became Modern*, at the San Francisco MOMA. Terese is a graduate of the Motley Theatre Design Course in London, UK, and Vassar College.

JAMES F. INGALLS (*Lighting Design*). CTG/Mark Taper Forum: *A Parallelogram*, *Romance*, *The Cherry Orchard*, *The Cider House Rules*, *The Persians*, *Slavs!*, *An American Comedy*. Other L.A.: *The Gospel According to the Other Mary*, *Cantata Criolla*, *Oedipus Rex/Symphony of Psalms*, *El Nino* (Los Angeles Philharmonic);

The Wooden Floor, *Tribu* (REDCAT). San Francisco: *Don Quixote*, *Onegin*, *Sylvia* (San Francisco Ballet); *Once in a Lifetime*, *Phedre* (American Conservatory Theater); *Doctor Atomic*, *The Death of Klinghoffer* (San Francisco Opera). Santa Ana/Irvine: The Wooden Floor dancers. Recent Theatre: *The Second Girl* (Huntington Theatre Company/Boston); *As I Remember It* (The Kennedy Center/D.C. and Jacob's Pillow Dance/MA); *Our Town* (Long Wharf Theatre/New Haven) and *Midsummer Night's Dream: A Chamber Play* (Stratford Shakespeare Festival). Recent Dance: *Don Quixote* (Pacific Northwest Ballet/Seattle); *Sea Lark* (Paul Taylor Dance Company). Recent Opera: *The Indian Queen* (Perm Opera/Russia); *The Gospel According to the Other Mary* (ENO/London).

CRICKET S. MYERS (*Sound Design*). Broadway: *Bengal Tiger at the Baghdad Zoo* (Drama Desk Award, Tony nomination). Off-Broadway: *Marvelous Wonderettes*. Mark Taper Forum: *The Steward of Christendom*, *Joe Turner*, *Vigil*, *Burn This*, *The Lieutenant of Inishmore* (Ovation nomination), *The Subject Was Roses*. Kirk Douglas Theatre: *Twist Your Dickens* (Ovation nomination), *The Wake*, *Bengal Tiger at the Baghdad Zoo* (Ovation nomination), *The Little Dog Laughed* (Ovation nomination). Regional: *Sideways*, *The Nightingale* (La Jolla Playhouse), *Book Club Play* (Arena Stage), *In the Wake* (Berkeley Rep), *Discord*, *Play Dead*, *Wrecks*, *Some Girl(s)*, *Emergency* (Ovation, NAACP nomination; Geffen), *Trudy and Max in Love*, *4000 Miles*, *The Fantasticks*, *Elemeno Pea* (South Coast Rep), *Crowns*, *Orson's Shadow* (Pasadena Playhouse), *Marvelous Wonderettes* (Laguna Playhouse). Cricket has earned 16 Ovation nominations, as well as winning an LADCC and a Garland Award.
www.cricketmyers.com.

MEG FISTER (*Casting*). Prior to joining the CTG casting department, Meg was the Artistic Manager at Actors Theatre of Louisville. Some of her previous casting credits include *The Christians* by Lucas Hnath, *brownsville song (b-side for tray)* by Kimber Lee, *The Grown Ups* by Jordan Harrison, *Partners* by Dorothy Fortenberry and *The Mountaintop* by Katori Hall. In 2010, she planned and organized a local immersion experience for playwrights from Chicago's The Second City, which ultimately resulted in a full-length play centered on the city of Louisville, *It Takes a 'Ville*. She holds a B.A. in art history from the University of Dayton.

DAVID S. FRANKLIN (*Production Stage Manager*). Center Theatre Group Highlights: *An Enemy of the People*, *Baz Luhrmann's La Bohème*, *Art*, *Romance*, *The Cherry Orchard*, *Curtains*, *Nightingale*, *The History Boys*, *Bloody Bloody Andrew Jackson*, *Two Unrelated Plays by David Mamet*, *Ain't Misbehavin'*, *Parade*, *The Subject Was Roses*, *Bengal Tiger at the Baghdad Zoo*, *The Lieutenant of Inishmore*, *Randy Newman's Harps and Angels*, *God of Carnage*, *Vigil*, *Waiting for Godot*, *Los Otros*, *Red*, *Seminar*, *Tribes*, *A Parallelogram*, *Humor Abuse*, *The Steward of Christendom*, *Vanya and Sonia and Masha and Spike*, *Marjorie Prime*, *What The Butler Saw*. Other Los Angeles: Los Angeles Theatre Center in its heyday from 1985-1990, Pasadena Playhouse and Geffen Playhouse. Regional: Seattle Rep, Intiman Theatre. New York: Public Theater. Tours: Europe - *Quotations from a Ruined City* and *Law of Remains* (with Reza Abdoh's Dar a Luz company).

SUSIE WALSH (*Stage Manager*). In Los Angeles, Susie has stage managed over 80 shows at theatres such as the Mark Taper Forum, the Ahmanson Theatre, the Geffen

Playhouse and LATC, as well as Pasadena Playhouse. Favorites are *Leap of Faith*, *Romeo and Juliet*, *A Midsummer Night's Dream*, *Waiting for Godot*, *The Heiress*, *Flower Drum Song*, *Living Out*, *Stuff Happens*, *Arcadia*, *The Drowsy Chaperone* and *Minsky's*. In New York, Susie stage managed *Putting it Together* with Carol Burnett.

MICHAEL RITCHIE (*Artistic Director*) is in his 10th season as Center Theatre Group's Artistic Director, and has led over 174 productions to the Ahmanson Theatre, Mark Taper Forum and Kirk Douglas Theatre stages including the premieres of six musicals that moved to Broadway – *The Drowsy Chaperone*, *Curtains*, *13, 9 to 5: The Musical*, *Bloody Bloody Andrew Jackson* and *Leap of Faith* – and the Pulitzer Prize in Drama finalist *Bengal Tiger at the Baghdad Zoo*.

STEPHEN D. ROUNTREE (*Managing Director*) joins Center Theatre Group this year as its new Managing Director. He was previously the President and CEO of The Music Center (2002-2014) and concurrently the CEO of the Los Angeles Opera (2008-2012). He served the J. Paul Getty Trust for 22 years, starting in 1980 as Deputy Director of the Getty Museum, then Director of the Getty Center Building Program, and in 1998, the Executive Vice President and Chief Operating Officer for the Getty Trust.

DOUGLAS C. BAKER (*Producing Director*) is now in his 25th season at CTG. He is an active member of the Broadway League, the Independent Presenters Network and is a proud member of the Association of Theatrical Press Agents and Managers. In May 2013 Doug received The Broadway League's prestigious Outstanding Achievement in Presenter Management Award.

KELLEY KIRKPATRICK (*Associate Artistic Director*). Since arriving at CTG in 2005, Kelley has produced over 50 productions at the Ahmanson Theatre, Mark Taper Forum and Kirk Douglas Theatre, many of which have gone on to future lives on Broadway, off-Broadway and beyond. In addition to producing shows across CTG's three stages, he has had the privilege of collaborating with local and national artists to commission new works.

NAUSICA STERGIU (*General Manager, Mark Taper Forum and Kirk Douglas Theatre*) has worked professionally supporting artists in theatres of all shapes, sizes and locales including many seasons at Center Theatre Group as General Manager and, previously, as Audience Development Director. She oversees main stage productions at the Taper and Douglas, as well as new play commissions and developmental productions. MFA, Yale School of Drama, and Outward Bound trekker.

GORDON DAVIDSON (*Founding Artistic Director*) led the Taper throughout its first 38 seasons, guiding over 300 productions to its stage and winning countless awards for himself and the theatre — including the Tony Award for theatrical excellence, Margo Jones Award, The Governor's Award for the Arts and a Guggenheim fellowship. *The Kentucky Cycle* and *Angels in America* (Part One) won the Pulitzer in consecutive years and, in 1994, three of the four plays nominated for the Tony Award for Best Play were from the Taper (*Angels in America* won). In 1989 Gordon took over the Ahmanson and, in 2004, he produced the inaugural season in the Kirk Douglas Theatre.

ADDITIONAL STAFF FOR THE PRICE

Assistant Director;
 Fight Consultant Doug Oliphant
 Assistant Costume Designer Kathryn M. Poppen
 Assistant Lighting Designer Heather Graff
 Prop Shopper Heather Armstrong
 Prop Artisans Patrick Smith, Zach Istrin
 Production Assistant Anne L. Hitt

CREDITS

Scenery constructed by F&D Scene Changes, Ltd.; Costumes provided by the Center Theatre Group Costume Shop and additional staff: First Hand – Iris Marshall; Stitchers – Leonardo Lopez, Emma Lee. Wig for Kate Burton by Carol F. Doran. Rehearsal and production photography by Craig Schwartz.

ONLINE

CenterTheatreGroup.org #ThePriceCTG
 Like us on facebook **Center Theatre Group**
 Follow us on Twitter @CTGLA
 Subscribe on YouTube **CTGLA**
 Follow us on Instagram @CTGLA

The Price is presented by special arrangement with SAMUEL FRENCH, INC.



The Actors and Stage Managers employed in this production are members of Actors' Equity Association, the Union of Professional Actors and Stage Managers of the United States.



The following employees are represented by the International Alliance of Theatrical Stage Employees, Moving Picture Machine Operators, Artists and Allied Crafts of the United States, its Territories and Canada, AFL-CIO, CLC: Stage Crew Local 33; Local Treasurers and Ticket Sellers Local 857; Wardrobe Crew Local 768; Make-up Artists and Hair Stylists Local 706.



The Press Agents, Company and House Managers employed in this production are represented by the Association of Theatrical Press Agents & Managers.



The Director is a member of the Society of Stage Directors and Choreographers, Inc., an independent national labor union.



Center Theatre Group is a member of League of Resident Theatres (LORT), the American Arts Alliance, the Broadway League, Independent Presenters Network (IPN), LA Stage Alliance, National Alliance for Musical Theatre (NAMT) and the Theatre Communications Group (TCG).

CENTER THEATRE GROUP L.A.'s Theatre Company
 MICHAEL RITCHIE, Artistic Director STEPHEN D. ROUNTREE, Managing Director
 DOUGLAS C. BAKER, Producing Director

ARTISTIC

NEEL KELLER Associate Artistic Director
 KELLEY KIRKPATRICK Associate Artistic Director
 DIANE RODRIGUEZ Associate Artistic Director
 PIER CARLO TALENTI Director of New Play Development
 LINDSAY ALLBAUGH Associate Producer
 PATRICIA GARZA Artistic Development Program Manager
 JOY MEADS Literary Manager/Artistic Engagement Strategist
 MARK B. SIMON Casting Director
 MEG FISTER Casting Associate
 ROBIN CAMPBELL Casting Department Coordinator

DAVID ADJMI (FADIMAN), JESSICA BLANK, SHEILA CALLAGHAN (FADIMAN), TIM CROUCH, STEVE CUIFFO, JUSTIN ELLINGTON, QUETZAL FLORES, GINA GIONFRIDDO, GOB SQUAD, MATT GOULD, DANAI GURIRA, JENNIFER HALEY, JOE HORTUA, DAVID HENRY HWANG, JOE ICONIS, BRANDEN JACOBS-JENKINS, ERIK JENSEN, RAJIV JOSEPH, GRIFFIN MATTHEWS, LAURAL MEADE, DAN O'BRIEN, EVANGELINE ORDAZ, DAEL ORLANDERSMITH, WILL POWER (FADIMAN), RAINPAN 43, MARCO RAMIREZ, MATT SAX, THE DEBATE SOCIETY, YOUNG JEAN LEE THEATER COMPANY Commissioned Artists

JOSH ALLEN, EVELINA FERNANDEZ, DOROTHY FORTENBERRY, JC LEE, ALEX LEWIN, KIM ROSENSTOCK, KEN ROHT CTG Writers' Workshop Members

EDUCATION AND COMMUNITY PARTNERSHIPS

LESLIE K. JOHNSON Director of Education and Community Partnerships
 KATHRYN MACKENZIE Director of Department Operations
 TRACI CHO KWON Director of Arts Education Initiatives
 CAMILLE SCHENKKAN Program Manager, Next Generation Initiatives
 JESUS REYES Program Manager, Community Partnerships
 KATRINA FRYE Program Associate
 MELISSA HERNANDEZ Program Associate
 ROSEMARY MARSTON-HIGDON Program Associate
 KELLY MUCHNICK Communications Coordinator
 SHANNON WINSTON Department Coordinator
 KHANISHA FOSTER Resident Teaching Artist
 DEBRA PIVER Resident Teaching Artist

MANAGEMENT AND ADMINISTRATION

NAUSICA STERGIOU General Manager (Mark Taper Forum, Kirk Douglas Theatre)
 JEFFREY UPAH General Manager (Ahmanson Theatre)
 SUZANNE HEE MAYBERRY Assistant General Manager (Mark Taper Forum)
 KATIE BRUNER SOFF Assistant General Manager (Kirk Douglas Theatre, NPD)
 ALANA BEIDELMAN Executive Assistant to Artistic Director
 EVELYN STAFFORD Executive Assistant to the Managing Director
 TIFFANY MOON General Management Associate

ERIC SIMS Director of Theatre Operations (Kirk Douglas Theatre)
 TOM BURMESTER Audience Experience Design/Front of House Mgr (Kirk Douglas Theatre)
 LAUREN BAXA Assistant Performance Manager (Kirk Douglas Theatre)
 MAX OKEN Facility Assistant (Kirk Douglas Theatre)
 SONDR A MAYER Concessions Manager (Kirk Douglas Theatre)

PRODUCTION

DAWN HOLISKI Production Department Operations Director
 JONATHAN BARLOW LEE Production Manager (Mark Taper Forum)
 KATE COLTUN Associate Production Manager (Mark Taper Forum)
 EMMET KAISER Master Carpenter (Mark Taper Forum)
 ROBERT RUBY Master Propertyman (Mark Taper Forum)
 WILLIAM MORNER Master Electrician (Mark Taper Forum)
 BONES MALONE Master Soundman (Mark Taper Forum)
 DENNIS SEETOO Wardrobe Supervisor (Mark Taper Forum)
 RICK GEYER Hair & Make-up Supervisor (Mark Taper Forum)
 LINDA WALKER House Manager (Mark Taper Forum)

JOE HAMLIN Technical Director/Ahmanson Production Manager
 CHAD SMITH Associate Technical Director
 SAM CRAVEN-GRIFFITHS Associate Technical Director

ANDREW THIELS Prop Manager
 MERRIANNE NEDREBERG Associate Prop Manager
 SARAH KRAININ Prop Associate
 CANDICE CAIN Costume Director
 BRENT M. BRUIN Costume Workroom Supervisor
 MADDIE KELLER Costume Generalist
 WHITNEY OPPENHEIMER Shop Assistant
 SWANTJE TUOHINO Tailor
 ELIZABETH LEONARD Production Operations Manager
 JULIO A. CUELLAR Driver/Custodian
 BO FOXWORTH, BRIAN SLATEN, TOBIE WINDHAM Drivers
 PETER WYLIE Interim Production Administrator

SHAWN ANDERSON Master Carpenter (Ahmanson Theatre)
 ANDREW W. ARNOLD Flyman (Ahmanson Theatre)
 STAN STEELMON Master Propertyman (Ahmanson Theatre)
 JIM BERGER Master Electrician (Ahmanson Theatre)
 ROBERT SMITH Master Soundman (Ahmanson Theatre)
 MICHAEL GARDNER Wardrobe Supervisor (Ahmanson Theatre)
 PATRICE K. MADRIGAL Hair and Make-up Supervisor (Ahmanson Theatre)
 CHRISTINE L. COX House Manager (Ahmanson Theatre)

CHRISTY WEIKEL Production Manager (Kirk Douglas Theatre)
 CHRISTOPHER REARDON Assistant Production Manager (Kirk Douglas Theatre)
 RICHARD PETERSON Master Electrician (Kirk Douglas Theatre)
 AARON STAUBACH Light Board Programmer/Operator (Kirk Douglas Theatre)
 ADAM PHALEN Head Audio (Kirk Douglas Theatre)
 VICTOR COBOS Stage Supervisor (Kirk Douglas Theatre)
 CAMBRIA CHICHI Wardrobe Supervisor (Kirk Douglas Theatre)

FINANCE, INFORMATION SYSTEMS AND HUMAN RESOURCES

MELODY MATTOS Controller
 JANIS BOWBEER Assistant Controller
 XOCBITL RAMIREZ Accounts Payable Coordinator
 FELICISIMA LAPID Accounts Payable Specialist
 DANNY LAMPSON Senior Staff Accountant
 ALEGRIA SENA Staff Accountant
 AMEETA SHARMA Payroll Manager
 DAVE ALTON Chief Information Officer

STAN GRUSHESKY Director of Information Systems
 SEAN PINTO Database and Web Manager
 MANDY RATLIFF DBA, Tessitura Administrator

JODY HORWITZ Director of Human Resources
 P.J. PHILLIPS Human Resources Administrator
 SINGER LEWAK, LLP Auditor
 MICHAEL C. DONALDSON, LISA A. CALLIF Legal Counsel
 GIBSON, DUNN & CRUTCHER Legal Counsel

DEVELOPMENT

YVONNE CARLSON BELL Director of Advancement
 PATRICK OWEN Deputy Director of Development
 NATALIE BERGESON Director of Donor Contributions
 JEAN KLING Director of Institutional Support
 LIZ LIN Director of Corporate Relations and Communications
 CHARITY WU Director of Individual Giving
 BECKY BIRDSONG Major Gifts Officer
 RYAN HONEY Associate Director of Special Initiatives
 ERIC BROWN Communications Manager
 KATY HILTON Grants Manager
 LAURA HITE Corporate Relations Manager
 MANDI OR Special Events Manager
 CONNOR BERGMAN Corporate Relations Associate
 JENNIFER CHAN Special Events Associate
 JUSTIN FOO Donor Contributions Associate
 SARAH HARBURG-PETRICH Development Assistant
 DONALD JOLLY Donor Relations Associate for the Inner Circle
 JESSICA NASH Donor Contributions Supervisor
 KIM OKAMURA Institutional Giving Associate
 MARIA PAREDES Donor Relations Associate
 ALLAIN ROCHEL Development Assistant
 ERIC SEPPALA Executive Assistant to the Advancement Director
 ERIN SCHLABACH Major Gifts Coordinator

AL BERMAN, THERESA CONDITO, ELIZABETH DELLORUSSO, DAVID GARVER, JENNIFER HARRELL, TONY LEWELLEN, HOLLY RAMOS, NICOLE SCIPIONE, PAUL VITAGLIANO Donor Advisors
 ADAM BURCH, KARLA GÁLVEZ Donor Services Associates
 ANNE BRUNER, MURRAY E. HELTZER, MARCI MILLER, JULIE NADAL Development Volunteers

MARKETING AND COMMUNICATIONS

KORY P. KELLY Director of Marketing and Communications
 CONSTANTINE LIGNOS Executive Assistant

NANCY HEREFORD Media and Communications Director
 PHYLLIS MOBERLY Media and Communications Associate
 JASON MARTIN Media and Communications Associate
 CHELSEY ROSETTER Media and Communications Coordinator
 KRISTI AVILA Media and Communications Coordinator

LEE QUEZA Art Director
 IRENE KANESHIRO Senior Design Manager
 JAVIER VASQUEZ Graphic Designer
 LOYDA GUADAMUZ Graphic Designer
 SARA KIM Graphic Designer

CODY LASSEN Marketing Director
 ARIE LEVINE Marketing Advertising Manager
 KAREN VOCK Marketing Manager
 KIYOMI EMI Audience Development Manager
 GARRETT COLLINS Audience Loyalty Manager

JAMES SIMS Content Strategy Director
 HAL BANFIELD Multimedia Producer

TICKET SALES AND SERVICES

SHAWN ROBERTSON Ticket Sales Director
 SKYPP CABANAS Ticket Operations Manager
 RACHYL UNDERWOOD Ticket Operations Coordinator

MICHAEL ZOLDESSY Account Sales Manager
 KIA GILSTRAP Account Sales Coordinator

SANDY CZUBIAK Audience and Subscriber Services Director
 JENNIFER BAKER, CHERYL HAWKER, RICHARD RAGSDALE Audience Services Supervisors
 ALICE CHEN Audience Services Asst. Supervisor
 SAM AARON, DEBORAH REED Audience Services Sales Associates

JEREMIE ARENCIBIA, VICKI BERNDT, CARLOS D. CHAVEZ, JR., PETER COLBURN, DONALD CRANDALL, MICHAEL ESPINOZA, GARY HOLLAND, EILEEN PEREZ, JUSTINE PEREZ, LEX SAVKO, DANNY SCHMITZ Audience Services Representatives

DANUTA SIEMAK Subscriber Services Supervisor
 CHRISTINA GUTIERREZ Subscriber Services Asst. Supervisor
 LIGIA PISTE Subscriber Services Senior Representative
 IRENE CHUANG, PETER STALOCH Subscriber Services Representatives

SARAH K. GONTA Box Office Treasurer
 KISHISA ROSS, GISELE FRAZEUR Assistant Treasurers
 ANGELICA CARBAJAL, MICHAEL KEMPISTY, LEROY PAWLOWSKI, MICHAEL SALTZMAN, CRIS SPACCA Box Office Staff

KERRY KORF Priority Services Director
 SUSAN F. TULLER Priority Services Operations Manager
 JAY BURNS Priority Services Sales Manager
 PAUL CUEN Priority Services Manager
 CANDICE WALTERS Priority Services Assistant Supervisor

CAROLE BAXTER, RACHEL BRINK, ZOE CANNER, ESTEBAN CRUZ, MAGGIE DODD, NIC DRESSEL, SOFIJA DUTCHER, MARC "BYRON" DROTMAN, SAMANTHA ELSE, LOU GEORGE, SHEP KOSTER, ALI LAFFER, MATT PELFREY, DONALD RIZZO, KEN SALLEY, KRISTEN SCHRASS, BOBBI LYNNE SCOTT, ANDREW SEVERYN, MICHAEL SMITH, QUINN SULLIVAN, BINOY THOMAS, DIANE WARD, JIM WATERMAN Representatives

INTERNS

JOHNATHAN GARZA, HAILEY MORAN, KIMBERLY WELCH

Center Theatre Group would like to thank its exceptional staff for their ongoing commitment, dedication and extraordinary efforts.