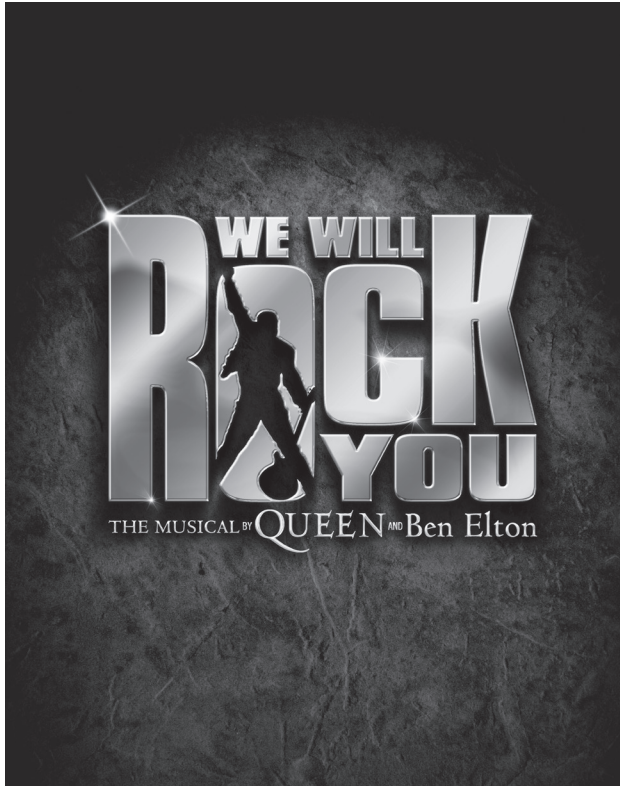


# Ahmanson Theatre 47th 2013/14 Season



#### FIRST SEASON PRODUCTION

Danny DeVito and Judd Hirsch in  
Neil Simon's

### The Sunshine Boys

Directed by Thea Sharrock  
September 24 – November 3, 2013

#### SEASON BONUS OPTION

### Matthew Bourne's Sleeping Beauty

A Gothic Romance  
Music composed by Tchaikovsky  
A New Adventures Production  
Co-Presented with Gloria Kaufman  
Presents Dance at the Music Center  
November 21 – December 1, 2013

#### SECOND SEASON PRODUCTION

### Peter and the Starcatcher

by Rick Elice  
Based upon the novel by Dave Barry  
and Ridley Pearson  
Directed by Roger Rees and  
Alex Timbers  
December 3, 2013 – January 12, 2014

#### SPECIAL EVENT PRESENTATION

### A Word or Two

Written, Arranged and Performed by  
Christopher Plummer  
Directed by Des McNuff  
January 19 – February 9, 2014

#### THIRD SEASON PRODUCTION

### Harmony

A New Musical  
Music by Barry Manilow  
Book and Lyrics by Bruce Sussman  
Choreographed by JoAnn M. Hunter  
Directed by Tony Speciale  
March 4 – April 13, 2014

#### FOURTH SEASON PRODUCTION

### The Gershwins' Porgy and Bess

by George Gershwin,  
DuBose and Dorothy Heyward,  
and Ira Gershwin  
Book Adapted by Suzan-Lori Parks  
Musical Score Adapted by  
Diedre L. Murray  
Directed by Diane Paulus  
April 22 – June 1, 2014

#### SEASON BONUS OPTION

### The Last Confession

by Roger Crane  
Directed by Jonathan Church  
United States Premiere  
June 7 – July 6, 2014

#### FIFTH SEASON PRODUCTION

### Queen and Ben Elton's We Will Rock You

Created by Ben Elton  
Musical Supervisors –  
Queen's Brian May  
and Roger Taylor  
July 15 – August 24, 2014

 Center  
Theatre  
Group  
L.A.'s Theatre Company  
A non-profit arts organization

Bank of America 

SEASON SPONSOR

# Inspiring Our Future

---

## Special Thanks to Center Theatre Group's Most Generous Annual Patrons

Center Theatre Group wishes to thank the following donors for their significant annual gifts and for their belief in the transformative power of theatre.

\$1 MILLION AND ABOVE

Brindell Roberts Gottlieb

---

\$250,000 AND ABOVE

Center Theatre Group Affiliates  
Kirk & Anne Douglas  
The James Irvine Foundation  
The Andrew W. Mellon Foundation

---

\$150,000 AND ABOVE

Anonymous  
Bank of America  
The Blue Ribbon  
Laura & James Rosenwald & Orinoco Foundation  
Jeanette Shammas†  
The Shubert Foundation, Inc.  
Wells Fargo Foundation

---

\$100,000 AND ABOVE

Ann & Stephen F. Hinchliffe, Jr.  
Los Angeles County Arts Commission  
JPMorgan Chase & Co.  
Deidra Norman Schumann  
Eva & Marc Stern

---

\$75,000 AND ABOVE

Elisabeth Katte Harris Trust  
William Randolph Hearst Foundation  
The Ralph M. Parsons Foundation  
Lloyd E. Rigler — Lawrence E. Deutsch Foundation

†*Deceased*

---

This list includes gifts made to Center Theatre Group  
between April 18, 2013, and June 18, 2014.



**Center Theatre Group**

L.A.'s Theatre Company

Ahmanson Theatre

Mark Taper Forum

Kirk Douglas Theatre

**Michael Ritchie**, ARTISTIC DIRECTOR **Edward L. Rada**, MANAGING DIRECTOR  
**Gordon Davidson**, FOUNDING ARTISTIC DIRECTOR

Queen Theatrical Productions, Phil McIntyre Entertainments,  
Tribeca Theatrical Productions and Networks Presentations  
present

# WE WILL ROCK YOU

MUSIC AND LYRICS

**Queen**

STORY AND SCRIPT

**Ben Elton**

FEATURING

**Brian Justin Crum Ruby Lewis**

AND

**Jacqueline B. Arnold P.J. Griffith Ryan Knowles Erica Peck Jared Zirilli**

WITH

**Todd Adamson Danny Balkwill Samantha Berman Jessica Crouch Alex DeLeo  
Saccha Dennis Sam DiGiuseppe Suzanna Dupree Daniel Greenberg Stephen Hernandez  
Nathan Keen Daniel Kermidas Ryan Koss Brooke Morrison Corey Mosello  
Jennifer Mote Katie Murphy Jennifer Noble  
Stephanie Sy Kasey Walker**

ORIGINAL PRODUCTION DESIGNER

**Mark Fisher**

LIGHTING DESIGNER

**Willie Williams**

VIDEO DIRECTORS

**Mark Fisher &  
Willie Williams**

SOUND DESIGNER

**Bobby Aitken**

COSTUME DESIGNER

**Tim Goodchild**

HAIR AND MAKE-UP DESIGN

**John 'Jack' Curtin**

ASSOCIATE SCENIC DESIGNER

**Ric Lipson**

ASSOCIATE COSTUME DESIGNER

**David Newell**

ASSOCIATE LIGHTING DESIGNER

**Anthony Pearson**

ASSOCIATE SOUND DESIGNER

**Garth Helm**

ORCHESTRATOR

**Steve Sidwell**

MUSIC DIRECTOR/CONDUCTOR

**Nate Patten**

MUSIC SUPERVISOR

**Mike Dixon, Brian  
May & Roger Taylor**

MUSIC COORDINATOR

**John Miller**

PRODUCTION MANAGER

**Ben Neafus**

PRODUCTION STAGE MANAGER

**Melissa Chacón**

COMPANY MANAGER

**Tegan Meyer**

CASTING

**Duncan Stewart, CSA /  
Benton Whitley, CSA  
Duncan Stewart and Company**

NATIONAL TOUR PRESS AND MARKETING

**Allied Live**

TOUR BOOKING

**The Road Company**

QUEEN MANAGEMENT

**Jim Beach**

EXECUTIVE PRODUCER

**Seth Wenig**

GENERAL MANAGER

**Gentry & Associates  
Guy Jordin Heard**

ASSOCIATE DIRECTOR & ASSOCIATE CHOREOGRAPHER

**Tracey Flye**

MUSICAL STAGING & CHOREOGRAPHER

**Arlene Phillips**

DIRECTOR

**Ben Elton**

Original West End production directed by Christopher Renshaw

All music in this production is based on songs written variously by Freddie Mercury, Brian May, Roger Taylor and John Deacon except for "Under Pressure" written by Queen and David Bowie

July 15 – Aug 24, 2014 • Ahmanson Theatre

**CAST**  
(in order of appearance)

Galileo . . . . . Brian Justin Crum  
Scaramouche . . . . . Ruby Lewis  
Killer Queen . . . . . Jacqueline B. Arnold  
Khashoggi . . . . . P.J. Griffith  
Oz . . . . . Erica Peck  
Brit . . . . . Jared Zirilli  
Buddy . . . . . Ryan Knowles  
Teacher . . . . . Saccha Dennis  
Teen Queens . . . . . Jessica Crouch, Suzanna Dupree,  
Brooke Morrison, Stephanie Sy  
GaGa Kids, Globalsoft Executives,  
Ladies in Waiting, Bohemians . . . . . Todd Adamson, Danny Balkwill,  
Jessica Crouch, Alex DeLeo, Saccha Dennis, Suzanna Dupree,  
Daniel Greenberg, Nathan Keen, Daniel Kermidas, Ryan Koss, Brooke Morrison,  
Corey Mosello, Jennifer Mote, Jennifer Noble, Stephanie Sy, Kasey Walker

**SWINGS**  
**Samantha Berman, Sam DiGiuseppe,**  
**Stephen Hernandez, Katie Murphy**

**UNDERSTUDIES**

For Galileo: **Todd Adamson, Daniel Greenberg, Corey Mosello**  
For Scaramouche: **Jennifer Noble, Stephanie Sy**  
For Killer Queen: **Jessica Crouch, Saccha Dennis**  
For Khashoggi: **Todd Adamson, Danny Balkwill**  
For Buddy: **Danny Balkwill, Daniel Greenberg**  
For Brit: **Todd Adamson, Danny Balkwill**  
For Oz: **Jessica Crouch, Brooke Morrison**

**DANCE CAPTAIN**

Dance Captain: **Samantha Berman**  
Assistant Dance Captain: **Sam DiGiuseppe**

**BAND**

Musical Director / Conductor: **Nate Patten**  
Assistant Conductor: **Brandon Ethridge**  
Keyboards: **Brandon Ethridge** and **Emily Marshall**  
Guitar: **Tristan Avakian** and **Bob Wegner**  
Bass: **Mike Cohen**  
Percussion: **David Stevens**  
Drums: **Danny Young**  
Music Coordinator: **John Miller**

---

Please turn off all electronic devices such as cellular phones, PDAs, beepers and watch alarms. The use of any recording device, either audio or video, and the taking of photographs, with or without flash, is strictly prohibited.

## MUSICAL NUMBERS

All music in this production is based on songs written variously by Freddie Mercury, Brian May, Roger Taylor and John Deacon except "Under Pressure," written by Queen and David Bowie.

### ACT ONE

#### PROLOGUE

*Innuendo* . . . . . Freddie & Company

#### SCENE 1: THE HINTERLAND

#### SCENE 2: VIRTUAL HIGH SCHOOL

*Radio Ga Ga* . . . . . GaGa Kids

*I Want To Break Free* . . . . . Galileo, Scaramouche

*Somebody to Love* . . . . . Scaramouche, Teen Queens

#### SCENE 3: THE BOARDROOM

*Killer Queen* . . . . . Killer Queen and her Globalsoft Executives

*Now I'm Here* . . . . . Killer Queen and her Globalsoft Executives

#### SCENE 4: THE HOSPITAL

*Under Pressure* . . . . . Galileo, Scaramouche

#### SCENE 5: KILLER QUEEN'S PAD

*A Kind of Magic* . . . . . Killer Queen and her Globalsoft Executives, Khashoggi

#### SCENE 6: THE WASTELAND

*I Want It All* . . . . . Brit, Oz, Company

*You're My Best Friend* . . . . . Galileo, Scaramouche

#### SCENE 7: DESCENT INTO THE UNDERGROUND

*Headlong* . . . . . Oz, Brit, Galileo, Scaramouche

#### SCENE 8: HARD ROCK CAFÉ

*No-One But You* . . . . . Oz, Bohemians

*Crazy Little Thing Called Love* . . . . . Brit, Oz, Galileo, Scaramouche, Bohemians

### ACT TWO

#### SCENE 1: LASER CAGES

*Flash* . . . . . Bohemians

*Seven Seas of Rhye* . . . . . Khashoggi, Bohemians

#### SCENE 2: WASTELAND

*Who Wants To Live Forever* . . . . . Scaramouche, Galileo

#### SCENE 3: MORNING IN THE WASTELAND

#### SCENE 4: KILLER QUEEN'S BOUDOIR

*Fat Bottomed Girls* . . . . . Killer Queen and her Ladies in Waiting

*Another One Bites The Dust* . . . . . Killer Queen

#### SCENE 5: OUT ON THE ROAD

*Hammer to Fall* . . . . . Galileo, Scaramouche

#### SCENE 6: HARD ROCK CAFÉ

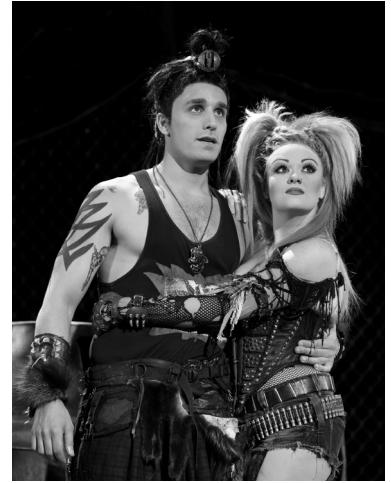
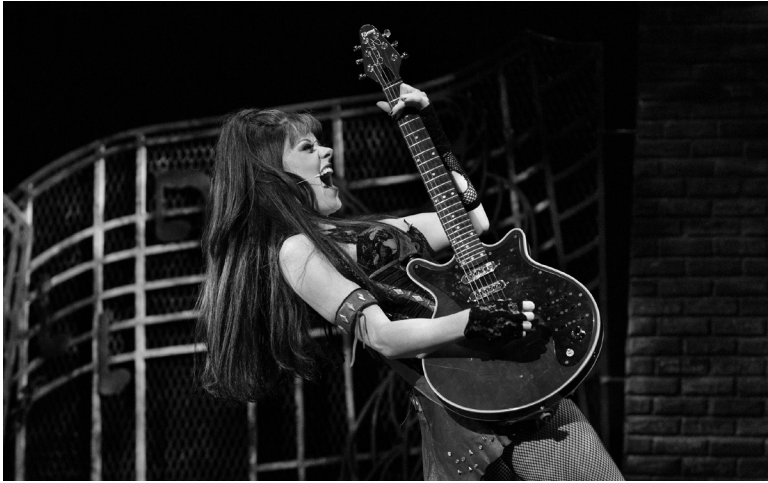
*These are the Days of Our Lives* . . . . . Buddy, Bohemians

*Headlong (Reprise)* . . . . . Scaramouche, Galileo, Buddy

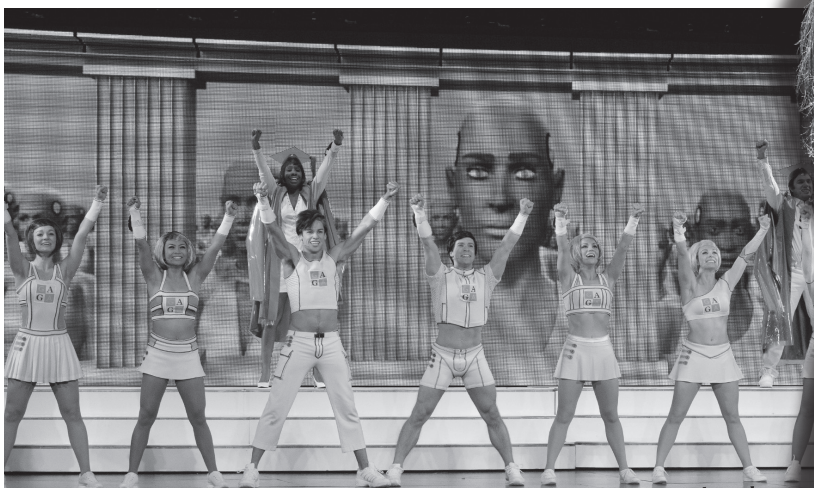
#### SCENE 7: GRACELAND

*We Will Rock You* . . . . . Galileo and Company

*We Are The Champions* . . . . . Galileo and Company



TOP-BOTTOM: L TO R: ALL PHOTOS BY PAUL KOLNIK. Ruby Lewis. Jared Zirilli and Erica Peck. The cast of the national tour of *We Will Rock You*. Ruby Lewis and Brian Justin Crum. Jacqueline B. Arnold. OPPOSITE PAGE: L TO R: Ryan Knowles, Brian Justin Crum and Ruby Lewis. Brian Justin Crum. The cast of the national tour of *We Will Rock You*. The cast of the national tour of *We Will Rock You*. Ruby Lewis and Brian Justin Crum.



## Who's Who

**BRIAN JUSTIN CRUM** (*Galileo*) is stoked to take *We Will Rock You* across America! On Broadway he has been seen in the Pulitzer Prize-winning *Next to Normal* (Gabe/Henry), *Grease* and *Wicked*. 1st National Tours: *Addams Family* (Lucas Bienenke), *Grease* (Doody) and *Wicked*. Other Credits: *Altar Boyz* (original *Chicago* cast) as Mark (Jeff Award nomination), *Jesus Christ Superstar*, *Snapshots* a Musical Revue by Stephen Schwartz and more. Brian was a guest star on *Law and Order: SVU* on NBC in the episode "Possessed." Thanks to Soffer/Namoff Management, Harden-Curtis Agency, Momma, sistas and friends for their overwhelming belief and support. Now get off your butts and ROCK WITH US! Twitter @BrianJustinCrum.

**RUBY LEWIS** (*Scaramouche*) grew up listening to Queen's Greatest Hits on repeat — what a thrill it is to sing these iconic songs every night! Western Kentucky University grad, summa cum laude. National Tours: *Jersey Boys*, *Grease*, *Gypsy*. Regional: 9 to 5 (Doralee) with 3D Theatricals, *Legally Blonde* (Elle) at Gateway Playhouse. Film: *Another Perfect Stranger*, *1 Message* and *Pass the Light*. TV: *Desperate Housewives*, *Medium*, *Brothers & Sisters*, *Rules of Engagement*, *Hart of Dixie* and *Showtime's Masters of Sex*. So grateful for her supportive friends, family and community, without whom none of this would be possible! Say howdy on FB or Twitter @RubyLewLA. www.rubylewis.com.

**JACQUELINE B. ARNOLD** (*Killer Queen*) is extremely proud to be a part of this extraordinary cast of creatives. Broadway: *Priscilla Queen of the Desert* (DIVA). Off-Broadway: *Bright Lights*, *Big City* (Clara Tillinghast). National Tours: *Hairspray*, *Las Vegas* and 1st National Tour (Lorraine, u/s Motormouth Maybelle); *Rent*, 2nd National Tour, (Joanne Jefferson). Broadway workshops: *Diner the Musical* (stripper). TV and Film: *Make It or Break It* (parent), and countless others. I Love You Lola! "If you don't know where you wanna go, then it doesn't matter which path



The cast of the national tour of *We Will Rock You*. PHOTO BY PAUL KOLNIK

you take." Just remain in the moment!! CHEERS!!!

**P.J. GRIFFITH** (*Khashoggi*). Theatre: *American Idiot* on Broadway (St. Jimmy), *Giant* at The Public Theater and The Dallas Theater Center (Jett Rink), The 1st National Tour of *Mamma Mia!* (Sky), The Donmar Warehouse/Taper revival of *Parade* (Tom Watson), *Rent* at Musical Theatre West (Roger), The L.A. revival of *Tommy* (Cousin Kevin), The world premiere of *Setup & Punch* at The Blank Theater (Jan - LADCC Award), *Romeo & Juliet* at La Mama (Mercutio). TV/Film: *The Good Wife*, *The Dark Knight Rises*, *Without A Trace*, *House*, *September 12th*, *The Weathered Underground*. P.J. fronts the band Blue Movie and has shared stages with Buckcherry, Neil Diamond, Biohazard and Green Day.

**ERICA PECK** (*Oz*). Best known for her Dora-Award nominated performance as Scaramouche in the original Canadian company of *We Will Rock You*, Erica Peck starred as Mary Maguire in the world premiere of Andrew Lloyd Webber's *The Boys in the Photograph* in Winnipeg and Toronto. Other credits include *The Wedding Singer* (Stage West), *Songs for a New World* (Angelwalk) and Penny Pingleton in *Hairspray* (Charlottetown). In 2012, she made her Stratford Festival debut in *You're A Good Man, Charlie Brown* (Lucy). She has performed with The Killers, Burton Cummings and Queen. Running a vintage clothing business WildthingVintage on the side, she has been featured on Etalk Daily, ET Canada and MTV. Thanks to Mom and Dad, the gang at Talent House, Marat,

and her favorite rock and roll boys, Robin and Pluto.

**JARED ZIRILLI** (*Brit*) recently played Lt. Sam Weinberg in *A Few Good Men* at the Alley Theatre in Houston, TX. New York: *Lysistrata Jones* (OBC), *Fat Camp* (off-Broadway), Jacob in *Twilight: The Musical* (New World Stages), Beto in *Bare, Bullets Over Broadway* (with Susan Stroman and Woody Allen). Tour: *Wicked* (Fiyero cover). Regional: *LMNOP* (Goodspeed), Roger in the Equity premiere of *Rent*, Matthew in the D.C. premiere of *Altar Boyz*, *The Light in the Piazza* (Maine State), Radames in *Aida* (Drury Lane). TV: *Pan Am*, *Blue Bloods*. Host: 'Jared's Broadway Boo's' (interviewing/terrorizing Broadway's Best!). Thanks H/H! For mom, Rayzie and Justin, and Grampa. Love my Whitney. Dedicated to Dad. www.JaredZirilli.com. Twitter @JaredZirilli.

**RYAN KNOWLES** (*Buddy*). Off-Broadway: *NEWSical: The Musical*, *Radio City Christmas Spectacular*, *Caligula Maximus* (Caligula), *Fools in Love* (Nick Bottom). National Tours: *How the Grinch Stole Christmas!* (Grandpa Who), *OZ: The Musical* (Wicked Witch of the West). Regional: Disney's *Aladdin* (The Genie), *Assassins* (JW Booth), *Little Shop...* (Orin). On TV, Ryan was host of Nickelodeon's daily live two-hour program *Me:TV*. "Long Live Rock & Roll!"

**TODD ADAMSON** (*Ensemble*, u/s *Galileo*, u/s *Khashoggi*, u/s *Brit*) is beyond thrilled to join the WWRY family! Selected past regional credits



include *Legally Blonde* (Warner), *Altar Boyz* (Matthew) and *The Wedding Singer* (Robbie). Todd has performed with Lea Michele, Karen Ziemba and Sandy Duncan in various readings and concerts in NYC. Special thanks to Mom and George (thanks for never giving up on me), Guy Stroman, Henderson/Hogan Agency and Benton Whitley at Duncan Stewart. Dreams do come true! Enjoy the show!

**DANNY BALKWILL** (*Ensemble, u/s Khashoggi, u/s Buddy, u/s Brit*). National (Canada/U.S.): *We Will Rock You* (Galileo Alt., U/S Brit); *Mamma Mia!* (u/s Sky, Pepper, Eddie); Regional: *Buddy Holly Story* (Jerry Allison/Music Director); *Legally Blonde* (Music Director); *Joseph... Dreamcoat* (Joseph); *Fiddler on the Roof* (Perchik); *Thoroughly Modern Millie* (Jimmy Smith); *Dirty Rotten Scoundrels* (u/s Freddie); *Godspell* (Judas); *Songs For A New World* (Man 1); *Honk* (Drake). These performances are dedicated to my mother, Elaine. Thank you for watching over me!

**SAMANTHA BERMAN** (*Swing, Dance Captain*) is living the dream of singing and dancing! National Tours: *South Pacific*, *A Chorus Line*. Some regional credits include *Curtains*, *The Boyfriend*, *Producers*, *Cats*, *Thoroughly Modern Millie*, *White Christmas*, *All Shook Up*. UC Irvine grad. Grateful for all the support from my most amazing family and friends. [www.samanthasheaberman.com](http://www.samanthasheaberman.com).

**JESSICA CROUCH** (*Ensemble, u/s Killer Queen, u/s Oz*). An NYU Tisch School of The Arts graduate, Jessica is well attuned to traveling the USA to rockin' awesome music, previously performing with the national tour of *All Shook Up*. Regional credits include *Vibrata in Forum* (Bay Street), Allison in *Bingo!* (California Musical Theatre), and Elle Woods in *Legally Blonde* for theatre companies on both East and West Coasts winning a StageSceneLA Award along the way. Jessica has also worked as a production singer for Carnival Cruise Lines. Love to Mom and Dad! [www.jessica-crouch.com](http://www.jessica-crouch.com) KCCO

**ALEX DeLEO** (*Ensemble*) is ecstatic to be joining the WWRY tour. Credits include Tour/Regional: *Priscilla Queen of the Desert* (Ensemble/ u/s Adam/Felicia); *Muny* (*Legally Blonde*, *Beauty and the Beast*, *Cats*, *Millie* and more); North Shore Music Theatre (*Bye Bye Birdie*, *Fame*, *High School Musical*). Walnut Hill School for the Arts and Cincinnati alum. Thanks to my loving family, #AvalonArtists, and of course Randy.

**SACCHA DENNIS** (*Ensemble, u/s Killer Queen*). Hailing from Montreal, this Canadian is thrilled to be debuting across the U.S. in WWRY!!! Saccha was recently seen in *Ragtime* and *My Fair Lady* at the Shaw Festival as well as the new musical *Maria Severa*, and *One Touch of Venus* and *Sunday in the Park with George*. Other credits include Canadian premiere of *Dreamgirls* (Theatre Aquarius/MTC/SW) and Dorothy in *The Wizard of Oz* (YPT). Saccha thanks TH, Tracey, Benton, her family and friends for their support and to Nicholas. [www.sacchadennis.com](http://www.sacchadennis.com).

**SAM DIGIUSEPPE** (*Assistant Dance Captain, Swing*) is thrilled to be part of this amazing company! Toronto: *The Wizard of Oz* (Mayor/Ensemble). Select Regional: *Hair* (Claude u/s), *She Loves Me* (Arpad), *25th Annual Putnam County Spelling Bee* (Chip), *Cabaret* (Victor). Training: Sheridan College PMUST (2011). Love to the cast and creatives, TH, and my parents. @samdigiuseppe

**SUZANNA DUPREE** (*Ensemble*) is ecstatic to be joining part of the Queen legacy with *We Will Rock You!!* National and International Tour: *A Chorus Line* (Sheila). New York/Regional: *A Chorus Line*, *Cabaret*, *Sweet Charity*, *42nd St.*, *Chess*, *Cinderella*. Raleigh, NC, native and graduate of The Boston Conservatory. Love and Thanks: Benton & Duncan, NETworks, Penny & co and my wonderful family and friends for their never-ending support.

**DANIEL GREENBERG** (*Ensemble, u/s Galileo, u/s Buddy*). Born and raised in

Toronto, Daniel quickly found an affinity for the stage. As a proud graduate of the musical theatre program at Sheridan College, Daniel went on to perform in *Legally Blonde* (Emmett), *All Shook Up* (Dennis), *Hairspray* (Fender), *The Wedding Singer* (u/s Robbie), *Joseph and the Amazing Technicolor Dreamcoat* (Benjamin), *Urinetown* (Billy Boy Bill), and *Grease* (Zuko). Thanks to Tracey, Bruce and TH, Mom, Dad, Josh, and Nell. Enjoy the show!

**STEPHEN HERNANDEZ** (*Swing*). Thrilled to be making his musical debut with the National Tour of *We Will Rock You*. Stephen has worked with Hysterica Dance Company, Chuthis and Daniel Ezralow. Endless thank yous to Mom and Dad, Chris, Nate, Vickie, Erin, EDGE Performing Arts Center, bloc, Peter, Kitty and all friends for your support and guidance.

**NATHAN KEEN** (*Ensemble*). Broadway: *Les Misérables* (Gavroche). National Tours: *West Side Story* (Big Deal/Fight Captain), *Ragtime* (Little Boy), *Les Misérables* (Gavroche), *Beauty and the Beast* (Chip). Thanks to the creative team, Nancy Carson, Duncan Stewart & Company, friends, and family. Strength and Honor!

**DANIEL KERMIDAS** (*Ensemble*) studied Dance and Musical Theater at Marymount Manhattan College. Broadway Tours: *West Side Story* (Swing, u/s Arab, Baby John), *Memphis the Musical* (Ensemble). Regional: *The Music Man* (Tommy Djilas), *Carousel* (Ensemble). TV: *So You Think You Can Dance* (Season 9). Love and thanks to his family and friends.

**RYAN KOSS** (*Ensemble*) was recently part of *Cats* at North Shore Music Theatre and North Carolina Theatre (Mr. Mistoffelees). Other Credits: Off-Broadway in *Lucky Guy the Musical* (Buckaroo swing), *Oklahoma!* at Berkshire Theatre Festival (Slim/Dance Captain), *Guys and Dolls* at Westchester Broadway Theatre. *Surf The Musical!* Planet Hollywood Vegas, The Muny

2010 Season, and Music Theatre of Wichita Season 07, 08, 09. Proud graduate of the University of Oklahoma.

**BROOKE MORRISON** (*Ensemble, u/s Oz*) is thrilled beyond measure to be touring with the First U.S. National Tour of *We Will Rock You* (Ensemble, Understudy Oz). Other National Tour Credits: *A Chorus Line* (Sheila). Favorite Regional: *Legally Blonde* (Margot), *Cats* (Demeter), *SUGAR* (Sugar). Graduated with her BFA in Music Theater from Elon University and shortly after traveled the world working as a singer/dancer for Holland America cruise lines. Special thanks to MSA and undying gratitude to her friends and amazing family for being such a rock in her life.

**COREY MOSELLO** (*Ensemble, u/s Galileo*) is thrilled to be making his National Tour debut! Theatre credits include *Miss Saigon* at North Shore Music Theatre, *The Donkey Show* at the A.R.T., *Jesus Christ Superstar* and *Batboy the Musical*. He received his BFA in musical theatre from The Boston Conservatory. Corey would like to thank CSA/Duncan Stewart, everyone at DGRW and his family and friends for all their love and support. For his loving mother!

**JENNIFER MOTE** (*Ensemble*). Stage Credits: Mirvish Productions: *Rock of Ages* (Waitress #1), Stratford Shakespeare Festival: *West Side Story* (Velma), *Cyrano de Bergerac*, Canadian Opera Company: Iphigenia in *Tauris*, Helix Dance Project. Film/ TV: *Suits* (NBC), *Degrassi: TNG*, *So You Think You Can Dance Canada* (Top 25), *The L.A. Complex* (MuchMusic), Performed with artists such as: Akon, Dragonette, Shawn Desman, Katy Perry, New Kids on the Block. Much love and thanks to my biggest fans – my family. Dedicated to my favorite lil dudes: Parker, Hailey and Tristan. Now... Let's ROCK! Twitter@jenmote.

**KATIE MURPHY** (*Swing*). *We Will Rock You*, Mirvish; *My Fair Lady/The Admirable Crichton*, Shaw Festival;

Regional: *Legally Blonde* (Brooke), *Dirty Rotten Scoundrels* (u/s Christine), *Peter Pan* (Tiger Lily); *42nd Street* (Peggy); *Anne of Green Gables* (Diana), *Charlotte's Web* (Charlotte), *Cats*, *Joseph...*, *Spamalot*, *White Christmas*, *Enchanted Evening* (Soloist). BFA Acting, UBC. Katie's a published poet, yoga teacher she and wrote a one-woman show for the VFF. Thrilled to be on the tour of love with her husband, Danny. Mom, Dad and Stir: for boundless support.

**JENNIFER NOBLE** (*Ensemble, u/s Scaramouche*). Broadway: *Ghost* (Molly u/s performance). Regional: *Limelight* (Lita Grey), La Jolla; *[Title of Show]* (Heidi), Playhouse Square; *The Mystery... Dood* (Dood u/s performance), *Idaho Shakes*; *All Shook Up* (Natalie) Little Theatre. Baldwin Wallace. Love and thanks to Mom, Dad, Zach, DFG, The Mine and Duncan Stewart & Co. JenniferNoble.net.

**STEPHANIE SY** (*Ensemble, u/s Scaramouche*) is PUMPED to be rockin' out to Queen on her first national tour. Regional: *Prairie Nurse*, *Yorkville the Musical*, *A History of Breathing* (SATA Award nomination; world premiere), *Velocity* (world premiere), *Little Women* (Jo March), *Footloose* (Rusty), *Miss Saigon* (Kim), *25th Annual Putnam County Spelling B* (Marcy Park), *Avenue Q* (Christmas Eve), *Romeo and Juliet*, *Penelopiad* (Oracle/Tannis). Endless gratitude and love to Tracey, the Sy family and dear dear friends. This one's for you Winnipeg! Twitter @stephaniesy7.

**KASEY WALKER** (*Ensemble*) is thrilled to be rocking on the road with WWRY! national tours: *Legally Blonde* (Ensemble); Regional: *Legally Blonde* (Brooke Wyndham) at Ogunquit Playhouse; *42nd Street*, *Chitty Chitty Bang Bang* and *The Who's Tommy* at Lyric Theatre of OK. BFA from the University of Oklahoma. Love to my family and AR for their unwavering support!

**BEN ELTON** (*Director, Story and Script*) is a multi-award winning novelist, playwright, television writer, screen writer and lyricist. He is also a theatre, screen and TV director, a stand-up comedian and a very occasional actor. He was born in Catford, South East London, on May 3, 1959, the youngest of four children. He read Drama at Manchester University. He is married and has three children. Musicals: *The Beautiful Game* (book and lyrics), Critics Circle Award Best Musical, music by Andrew Lloyd Webber; *We Will Rock You* (book), Olivier-Award winner, music by Queen; *Tonight's The Night* (book), music by Rod Stewart and others; *Love Never Dies* co-wrote book, music by Andrew Lloyd Webber. Plays: *The New Review with Richard Curtis*, *Gasping*, *Silly Cow*, *Popcorn* (Olivier- Award, Crime Writers Association Gold Dagger Award for Crime Fiction), *Blast From the Past*. Novels: *Stark*, *Gridlock*, *This Other Eden*, *Popcorn*, *Blast From The Past*, *Inconceivable*, *Dead Famous*, *High Society* (WH Smiths People's Choice Fiction Award), *Past Mortem* (Prix Polar International Crime Writer Award, Amitiès Mortelles), *The First Casualty*, *Chart Throb*, *Blind Faith*, *Meltdown*, *Two Brothers*. TV: *The Young Ones* (BAFTA-award winner), *Alfresco*, *Happy Families*, *Blackadder 2*, *Filthy Rich & Catflap*, *Saturday Live*, *Blackadder The Third* (BAFTA-Award winner), *Friday Night Live*, *Blackadder Goes Forth* (BAFTA-Award winner), *Ben Elton The Man From Auntie* (The Royal Television Society Writers Award), *The Thin Blue Line* (British Comedy Award and Public and Professional Jury Awards at Reims), *The Ben Elton Show*, *Blessed* and *The Wright Way*. Ben also wrote the exam episode for the Mr. Bean series. As a stand-up comedian, Ben has been one of the U.K.'s most successful live acts for almost 30 years. He last toured in 2005-2006. In 1990 he co-hosted the Nelson Mandela Celebration at Wembley Stadium. He hosted the Brits in 1997 and 1998 and The Royal Variety Performance in 2000. He writes all his own material. Films: *Maybe Baby* (writer/director). Other directing work

includes *Silly Cow*, *The Thin Blue Line* (with John Birkin), *Blessed*, *We Will Rock You*, *Tonight's The Night* and *The Beautiful Game*, reworked as *The Boys In the Photograph*. In 2007 Ben Elton was awarded the Special Golden Rose D'Or at The International Television Festival in Lucerne Switzerland, for his lifetime contribution to the Television Arts.

**BRIAN MAY, CBE, PhD, FRAS**, is a founding member of Queen, a world-renowned guitarist, songwriter and performer; also a Doctor of Astrophysics, 3-D stereoscopic photography authority, patron to a number of charities and a passionate campaigner for animal welfare. Brian penned 22 of Queen's Top 20 hit singles including "We Will Rock You," now a feature of almost every sporting event worldwide, and recently a star live feature of the closing ceremony of the London 2012 Olympics. "We Will Rock You" also gave its name to the worldwide hit Queen musical now celebrating its 11th anniversary in London, and completing its first U.S. tour; Brian and band-mate Roger Taylor are co-musical supervisors for the production. Following four decades of worldwide success with Queen and as a solo artist, most recently Brian has been writing and performing with Kerry Ellis, originator of the role of Meat in the London WWRY production. Brian's interest in 3-D Photography is evident in the recent publication of *Diableries — Stereoscopic Adventures in Hell*, Brian's fourth book. As an advocate for animal welfare, Brian is a leading inspiration in the ongoing fight against the proposed U.K. badger cull, and the return of blood sports. Brian can be contacted via his website [www.brianmay.com](http://www.brianmay.com).

**ROGER TAYLOR**. Although best known for his powerhouse role in Queen, Roger Taylor is anything but a drummer confined to his kit. With rock 'n' roll in his veins all through his school days, he has always been a highly active, vocal member of Queen. He famously wrote Queen's No. 1 hits "Radio Ga

Ga," "Days of our Lives" and "A Kind of Magic," among others. Each of the band's 15 studio albums included compositions by him including such eternal classics as "I'm In Love With My Car" and "Sheer Heart Attack." He was also the first to make a solo album, 1981's *Fun in Space*. To date he has released four solo albums, which, aside from his work with Queen, further highlighted Taylor as a musician and writer with a strong sense of identity, a wide musical perspective, and a defined political awareness, more often than not conveyed in characteristic irony. He is kept busy these days overseeing Queen's worldwide hit musical *We Will Rock You* and as the creator and driving force behind the Queen Extravaganza, the hugely successful official Queen tribute band. The Extravaganza is undertaking its second tour of North America and then takes its unique show to the U.K. For the immediate future Roger is to release new solo material with the album *Fun On Earth* as well as a retrospective box set, *The Lot*, possibly followed by a solo tour.

**ARLENE PHILLIPS** (*Musical Staging and Choreographer*). Arlene Phillips is a showbiz legend, her dance group Hot Gossip revolutionized dance in the U.K. and in 2013 she was honored by the Queen as Commander of the Order of the British Empire: working with stars from film and TV, to theatre and arenas, choreographing hit West End and Broadway musicals *The Wizard of Oz*, *Starlight Express*, *Flashdance*, *The Sound of Music*, *Grease*, *We Will Rock You* and *Saturday Night Fever*; directing the concert *The Music of Andrew Lloyd Webber* starring Michael Crawford and Sarah Brightman; choreographing for Hollywood directors on films from *Annie* to Monty Python's *Meaning of Life*; creating iconic videos for stars Whitney Houston, Elton John, Queen, Diana Ross, Tina Turner, The Bee Gees, Duran Duran, Aretha Franklin, Joan Jett, Kiss, Donna Summer and Robbie Williams. As a TV judge on *So You Think You Can Dance*, *Strictly Come Dancing* in the U.K. and *Over The*

*Rainbow* in Canada, Arlene has become a well loved household name. Follow on Twitter: @arlenephillips, Facebook: TheArlenePhillips.

**TRACEY FLYE** (*Associate Director and Associate Choreographer*). Tracey's complete credits span over 135 productions internationally, directing, choreographing and performing. Her directing credits include Queen's *We Will Rock You* at Toronto's Panasonic Theatre, Associate Director for *We Will Rock You* South Africa, New Zealand/Asia and Resident Director for *We Will Rock You* (Toronto), *The Penelopiad*, *The 39 Steps* (RMTC), *The Wizard of Oz*, *Snow White* (Ross Petty Productions), Resident Director for *War Horse* (Toronto). Direction/Choreography: *Hairspray* (Rainbow Stage), staging/choreography *West Side Story* (Vancouver Opera), *The Drowsy Chaperone* (TC/MTC), choreography for *Kiss Me*, *Kate* and *Evita*, and re-conception of *King of Thieves* for The Stratford Shakespeare Festival. Choreographer/Assoc. Director for Andrew Lloyd Webber's *Boys in the Photograph*, Associate Choreographer for *Peggy Sue Got Married* (West End), *West Side Story* (Stratford Festival) and from the time of its North American debut, Tracey was Asst. Choreographer for *Mamma Mia!* Toronto/U.S. National Tour. She continues to be committed to the development of new works.

**MARK FISHER** (*Original Production Designer, Video Director*). A world renowned designer and architect Mark Fisher's credits include the most memorable touring rock concerts ever staged: 'The Wall' for Pink Floyd in 1980 and Roger Waters in 2010, all Rolling Stones shows since 1989 and U2 concerts since 1992. His architecturally innovative outdoor stages have been constructed several thousand times in cities throughout the world. He designed the theatre, scenery and acrobatic effects for *KÀ*, the permanent show by Cirque du Soleil at the MGM Grand in Las Vegas; other theatre

credits include *Viva Elvis* and *Michael Jackson* also for Cirque du Soleil. Mark was chief designer for the opening and closing ceremonies for the 2008 Beijing Olympics and executive producer for the London 2012 Olympic Opening and Closing Ceremonies.

**WILLIE WILLIAMS** (*Lighting Designer, Video Director*) is best known for his innovative rock show designs where his combination of hi-tech media and lo-tech eccentricity has received much acclaim. Williams has worked with U2 for most of their live career. His work with George Michael, R.E.M. and David Bowie has also been highly regarded. Performing arts projects have included collaborating with Complicité, Laurie Anderson, Marianne Faithfull, Kronos Quartet and Montréal dance company La La La Human Steps. Theatre credits for lighting and video design include *French & Saunders*, *Little Britain Live*, *Barbarella*, *Pam Ann*, *Steve Coogan* and *The Fast Show*.

**BOBBY AITKEN** (*Sound Designer*) has been involved with theatre sound for over 30 years, designing sound for productions in the U.K. and around the world. Theatre work includes *Dirty Dancing*, *Ghost*, *Viva Forever!*, *Mamma Mia!*, *Five Guys Named Moe*. Bobby was the Sound Designer for the opening and closing ceremonies of the London 2012 Olympic and Paralympic Games. For the past few years, Bobby has been working to create techniques to deliver credible sound reinforcement for large scale, in-the-round opera production.

**TIM GOODCHILD** (*Costume Designer*). Three time Olivier Award-winner has designed for stage, television and film. He has designed over 70 productions for West End theatre and 20 productions for the New Shakespeare Company. In 1988 he made theatre history designing the first Anglo-Soviet production of *Swan Lake* for the Moscow Classical Ballet, seen in London, the USA, Japan and Moscow. He also designed the ballet *A Simple Man* for BBC2, which won the 1987

BAFTA Award. BBC2's musical *The Look of Love* and costume designs for the film *The Little Prince*. Currently working on *Strangers On A Train*, Gielgud Theatre, West End and *The Nutcracker* for Houston Ballet.

**JOHN 'JACK' CURTIN** (*Hair and Make-Up Designer*). Film, Department Head/Key: *Almost Perfect*, *A Little Help*, *The Curious Case of Benjamin Button* (Academy Award), *Joshua*, *Spinning into Butter*, *Make Yourself at Home*. Television: *Kidnapped*, *Law & Order*, *30 Rock*, *America's Got Talent*, *Gossip Girl*, *Carrie Diaries*. Theatre: *Rock of Ages* (NCL), *Fame* (Phoenix Productions), *Kiss of the Spider Woman* (NETworks), *The Will Roger's Follies* (Troika), *42nd Street* (Troika), *Oliver* (Troika). Broadway Supervisor: *Priscilla Queen of the Desert*, *La Cage Aux Folles* (2010), *Royal Family* (2009), *Grease* (2007), *Coram Boy*, *The Lion King*, *Dream*.

**DUNCAN STEWART AND COMPANY** ( *Casting*). Duncan Stewart and Benton Whitley are responsible for casting the North American tour of *We Will Rock You*, the Broadway revival of *Pippin*, *Chicago* (Broadway and National Tour), *The Radio City Christmas Spectacular*, the off-Broadway production of *Natasha, Pierre, and the Great Comet of 1812* and upcoming *The Tempest* for A.R.T. Other projects include Carnegie Hall, Menier Chocolate Factory (U.S. casting); *Royal Caribbean*; *La Cage aux Folles* (2010 Broadway revival and tour); *Thriller Live* (West End); as well as numerous regional theatres. Proud members of the Casting Society of America. [www.dstewartco.com](http://www.dstewartco.com).

**MIKE DIXON** (*Music Supervisor*) graduated from Trinity College of Music in 1979, and over the course of his varied and multifaceted career Mike has established himself as one of the leading figures in the West End, television and radio as a Musical Supervisor, Musical Director, Conductor, Arranger and Composer.

**NATE PATTEN** (*Music Director*) is thrilled and humbled to get to play "Another One Bites the Dust" in front of an audience. Nate was most recently the music director/conductor for the national tour of *Elf* that played the Kennedy Center this Christmas. Before that, he spent nine crazy months (of which he remembers three) on the road as the music director of *Flashdance*. Broadway: *Catch Me If You Can*, *Bonnie and Clyde*. Off Broadway: *Silence! The Musical* (also in L.A.), *The Toxic Avenger*. Tours: *Disney's Beauty and the Beast*, *The Wedding Singer*, *The Wizard of Oz*. Nate played Danny Zuko in his middle school production of *Grease*. Much love always to my family and friends. For Dustin.

**JOHN MILLER** (*Music Coordinator*). Broadway — over 100 shows, including *Beautiful: The Carole King Musical*, *Pippin*, *Once*, *Jersey Boys*, *Newsies*, *Rock of Ages*, *Porgy and Bess*, *Jesus Christ Superstar*, *Godspell*, *La Cage Aux Folles*, *Priscilla Queen of the Desert*, *Sister Act*, *Follies*, *A Little Night Music*, *Leap of Faith*, *Baby it's You*, *Elf*. Musician (bass): Leonard Cohen, Eric Clapton, Frank Sinatra, Carly Simon, Michael Jackson, Peter Paul & Mary, BB King, Bette Midler, Bob Dylan, Mose Allison. His album *Stage Door Johnny* — John Miller: Takes on Broadway is available on PS Classics Records. [www.johnmillerbass.com](http://www.johnmillerbass.com).

**TEGAN MEYER** (*Company Manager*) is thrilled to join WWRV! Credits include *Elf* (National Tour), *Memphis* (First National Tour). Broadway: *Memphis*, *Donny & Marie: A Broadway Christmas*, the revival of *Guys & Dolls* directed by Des McAnuff, *The Pirate Queen*, *Freshly Squeezed*, *Laughing Room Only*. Off-Broadway: *The Great Divorce*, *What's That Smell*, *The Ultimate Jew*, *Slut*. Ms. Meyer proudly co-produced the women's festival *Estrogenius* from 2004–2008 at Manhattan Theatre Source.

**MELISSA CHACÓN** (*Production Stage Manager*). National Tours: *Billy Elliot the*

*Musical, Rent* and *Contact*. New York credits include *1001*, *Pinkalicious*, *Jimi & Mr. B*, *Circle of Friends*, *The American Girls Revue* as well as *Much Ado About Nothing* and *The School for Husbands* (N.Y. Classical Theatre) and *As You Like It*, *The Tempest* and *Much Ado About Nothing* (Hamptons Shakespeare Festival). She earned her MFA in Stage Management from Rutgers University's Mason Gross School of the Arts.

**MITCHELL B. HODGES** (*Stage Manager*). Broadway: *Cabaret*, *Twelfth Night* and *Richard III*. Tours: *Million Dollar Quartet*, *Les Misérables* 25th Anniversary, *West Side Story* and *The Phantom of the Opera*. Regional: Paper Mill Playhouse, Music Theatre of Wichita, Fort Worth Opera and Glimmerglass Opera. Thanks to Artie, Jason and Heather! Go Blue!

**PATRICIA L. GRABB** (*Assistant Stage Manager*) is excited to be back on the road with *We Will Rock You* after most recently working on Broadway with Daniel Radcliffe in *The Cripple of Inishmaan*. National Tours: *A Christmas Story*, *Mary Poppins*, *Young Frankenstein*, *101 Dalmatians*, *Jesus Christ Superstar*, *Cats*, *Evita*, *Miss Saigon*, *A Christmas Carol*. International Tours: *Swing!* (Japan). NYC/Regional Credits: *Finding Neverland* (workshop), Papermill Playhouse, Queens Theatre in the Park, SurfFlight Theatre, Tropicana Casino and Pennsylvania Centre Stage. Patty is proud graduate of Penn State University. Love to her family.

**SETH WENIG** (*Executive Producer*) has been with NETWORKS since its inception in 1995. He spearheaded the international tours of *Fosse* starring Ben Vereen/Ruthie Henshall as well as the U.K. regional tour of Rodgers & Hammerstein's *The King and I*. Together with Cameron Mackintosh, Seth served as executive producer of a 40-week U.K. regional tour of the National Theatre's *My Fair Lady*, which also ran in the United States. He is currently serving as Executive Producer on *War Horse*, *The Phantom of the*

*Opera* and *We Will Rock You*. He is most proud of his greatest productions, *Marlo* and *Camden*.

**ALLIED LIVE** (*Marketing and Press*) is a full-service marketing and advertising agency representing Broadway shows, national tours, performing arts institutions and experiential entertainment entities. Current clients include *Blue Man Group*, *The Book of Mormon*, *A Christmas Story*, *Rodgers + Hammerstein's Cinderella*, *Elf*, *Ghost*, *Kinky Boots*, *Mamma Mia!*, *Motown*, *Once*, *Peter and the Starcatcher*, *Stomp*, *We Will Rock You*, *West Side Story* and *Irving Berlin's White Christmas*.

**THE ROAD COMPANY** was founded in 1997 by Stephen Lindsay and Brett Sirota. In addition to *We Will Rock You*, current representation includes *Wicked*, *Kinky Boots*, *Annie*, *Once*, *Peter and the Starcatcher*, *Evita*, *Elf*, *Billy Elliot*, *Rock of Ages*, *Rain: A Tribute to The Beatles* and *Donny and Marie*. The Road Company is made possible by Shawn Willett, Magaly Barone, Jenny Kirlin, Justine Spingler, Allie Beik and Garrett Holtz.

**PHIL McINTYRE ENTERTAINMENTS** (*Producer*) has been producing, promoting and representing acts since 1974. For 20 years the company was one of the country's leading rock and roll promoters, working with bands such as The Smiths, Culture Club, New Order, Tears for Fears and Metallica. PME also promoted the Queen and Paul Rodgers 2008 European tour. PME has produced two feature films; *Guest House Paradiso* starring Rik Mayall and Adrian Edmondson and *Maybe Baby* starring Hugh Laurie and Joely Richardson (written and directed by Ben Elton). The company has had six West End hit plays: *Gasp*, *Silly Cow*, *Slip of the Tongue*, *Waiting for Godot*, *Smaller* and the Laurence Olivier Award-winning *Popcorn*. In May 2002 *We Will Rock You* opened in London's West End; a musical collaboration, between Ben Elton, Robert De Niro, Phil McIntyre Entertainment and Queen. It has since launched the *We Will Rock You* U.K. tour

which opened in Manchester in 2009 and the North American tour which opened in 2013.

**TRIBECA THEATRICAL PRODUCTIONS** (*Producer*). Since its founding by Jane Rosenthal and Robert De Niro in 1988, Tribeca Productions has produced more than 25 feature films, garnered several Academy Award nominations and countless critics awards, and grossed more than \$2 billion worldwide. Rosenthal and De Niro's film and TV credits include executive producers for *About a Boy*, *NYC 22*, *Being Flynn* and *Public Enemies*; and producers for *Little Fockers*, *What Just Happened?*, *The Good Shepherd*, *Rent*, *House of D*, *Meet the Fockers*, *Stage Beauty*, *About a Boy*, *Analyze That*, *Showtime*, *Meet the Parents*, *The Adventures of Rocky & Bullwinkle*, *Analyze This*, *Flawless*, *Wag the Dog*, *Marvin's Room*, *A Bronx Tale*, *The Night We Never Met*, *Thunderheart*, *Mistress*, and *Night and the City*. Under Tribeca Theatrical Productions, along with Queen Theatrical Productions and Phil McIntyre Entertainment, Rosenthal and De Niro have produced the theatrical musical *We Will Rock You*. The tour will come to North America produced along with Networks Presentations.

**NETWORKS PRESENTATIONS, LLC** (*Producer*), founded in 1995, has continued to grow and expand to become one of the largest producing organizations of touring Broadway musicals in North America and remains committed to delivering quality entertainment to audiences around the world. Its extensive and diverse list of touring productions include Cameron Mackintosh's The 25th Anniversary Production of *Les Misérables* and the spectacular new production of *The Phantom of the Opera*; The National Theatre of Great Britain's production of *War Horse*; Queen and Ben Elton's *We Will Rock You*; Disney's *Beauty and the Beast*; *Blue Man Group* national tour; The Lincoln Center Theater productions of *The Light in the Piazza* and *Rodgers & Hammerstein's South Pacific*, as well

as *Cinderella* starring Eartha Kitt and Deborah Gibson, *Seussical*, *Annie*, *La Cage Aux Folles*, *Rent*, *The Producers*, *Hairspray*, *Spring Awakening*, *Sweeney Todd*, *Billy Elliot the Musical*, *Elf the Musical*, *Dirty Dancing* and many others.

#### FOR CENTER THEATRE GROUP

**MICHAEL RITCHIE** (*Artistic Director*) is in his ninth season as Center Theatre Group's Artistic Director, and has led over 170 productions to the Ahmanson, Taper and Douglas stages since his arrival in 2005. From 1996 to 2004 Michael was the Producer of the Williamstown Theatre Festival and prior to that he was a Production Stage Manager in NYC. At CTG, he premiered six musicals that moved to Broadway — *The Drowsy Chaperone* (which won 13 Tony Award® nominations), *Curtains* (eight Tony nominations), *13, 9 to 5: The Musical*, *Bloody Bloody Andrew Jackson* and *Leap of Faith*. He has produced 39 world premieres including the musicals *Minsky's*, *Venice* and *Sleeping Beauty Wakes*, and the plays *Bengal Tiger at the Baghdad Zoo* (a Pulitzer Prize finalist that also moved to Broadway), *Water & Power* and *Yellow Face*, and he presented a broad range of plays and musicals ranging from *Dead End* to *The Black Rider* to *Edward Scissorhands* to blockbusters such as *God of Carnage*, *Mary Poppins*, *Jersey Boys* and *August: Osage County*. In addition, Michael inaugurated CTG's New Play Production Program, designed to foster the development and production of new work.

**EDWARD L. RADA** (*Managing Director*) returned to Center Theatre Group in 2011 after previously serving as CTG's Chief Financial Officer for 12 years (1996–2008). Rada spent three years (2008–2011) as President of the Music Center Foundation, a non-profit corporation that holds and invests the endowment and reserve funds for the Music Center and its resident companies (including CTG). Prior to his years at CTG, he was the Director of Finance at The Old Globe

in San Diego and principal of Rada & Associates, an accounting firm that specialized in entertainment-related non-profit organizations and theatrical productions. He is a graduate of Occidental College in Los Angeles with numerous post-graduate coursework and credentials. He currently serves on the board of directors for Entertainment Industry Foundation, Theatre @ Boston Court, and United Support of Artists for Africa/USA for Africa, among other affiliations. He also serves on the board of trustees for the pension, health and welfare and 401(k) plans of I.A.T.S.E. Local 33 Stagehands Union.

**DOUGLAS C. BAKER** (*Producing Director*) is now in his 24th season at CTG. Previously, he managed Broadway and touring productions including *Tru*, *Born Yesterday*, *The Gospel at Colonius*, *Annie*, *A Chorus Line*, *Working*, *The Wiz*, and *Legends!*, which premiered at the Ahmanson Theatre in 1986 and starred Mary Martin and Carol Channing. Doug is a member of the Achievement Hall of Fame of Chagrin Falls Schools in Ohio and a graduate of Albion College. He is an active member of the Broadway League, the Independent Presenters Network and is a proud member of the Association of Theatrical Press Agents and Managers. In May 2013 Doug received The Broadway League's prestigious Outstanding Achievement in Presenter Management Award.

**LINDSAY ALLBAUGH** (*Producing Associate*) is a member of Center Theatre Group's artistic staff and has served in varying capacities for the past nine years. Lindsay also serves as the artistic coordinator for CTG's Sherwood Award, which supports emerging Los Angeles artists. In addition to her work for CTG, Lindsay is the Co-Artistic Director at the Elephant Theatre Company in Hollywood. Producing credits include *different words for the same thing* and *The Nether* at the Kirk Douglas Theatre and *Waiting for Godot* at the Mark Taper Forum. Directing credits include the

West Coast premieres of *100 Saints You Should Know* and *Never Tell* (Elephant), the world premiere of *Revelation* (Elephant), *Supernova* (Elephant) and *Kate Crackernuts*, *Gray City*, *Aloha Say the Pretty Girls* (Harvard/ART).

**JEFFREY UPAH** (*General Manager, Ahmanson Theatre*) has worked in management at Center Theatre Group since 2006 on more than 50 musicals, plays and special events including both pre-Broadway productions and Broadway tours. Some of his favorites include *Follies*, *God of Carnage* and *The Black Rider* (having previously worked on Robert Wilson productions in Boston, Houston and São Paulo, Brazil). Prior to CTG, he was the marketing manager for the last two of his 11 seasons with The Santa Fe Opera, and worked in various capacities at Yale Repertory Theatre, American Repertory Theatre and Jacob's Pillow Dance Festival, among others. He graduated magna cum laude with his studies in film and theatre from Washington University in St. Louis, and received an MFA in theatre management from the Yale School of Drama.

**GORDON DAVIDSON** (*Founding Artistic Director*) led the Taper throughout its first 38 seasons, guiding over 300 productions to its stage and winning countless awards for himself and the theatre — including the Tony Award® for theatrical excellence, Margo Jones Award, The Governor's Award for the Arts and a Guggenheim fellowship. *The Kentucky Cycle* and *Angels in America* (Part One) won the Pulitzer in consecutive years and, in 1994, three of the four plays nominated for the Tony Award® for Best Play were from the Taper (*Angels in America* won). In 1989 Gordon took over the Ahmanson and, in 2004, he produced the inaugural season in the Kirk Douglas Theatre.

**STAFF FOR WE WILL ROCK YOU**

**GENERAL MANAGER**

GENTRY & ASSOCIATES  
Scott Jackson, Gregory Vander Ploeg,  
Guy Jordin Heard, Penelope Lopez

**COMPANY MANAGER**

Tegan Meyer

**TOUR MARKETING AND PUBLICITY**

ALLIED LIVE  
Laura Matalon, Marya Peters,  
Sarah Dahlberg, Jennifer Gallagher,  
Doug Blenker, Mary Alyce Blum, Andrew Damer,  
John Gilmour, Anne Dailey Meyer,  
Meghan McDonald, Jackie Smith

**EXCLUSIVE TOUR DIRECTION**

THE ROAD COMPANY  
Stephen Lindsay Brett Sirota  
165 West 46th Street, Suite 1101,  
New York, NY 10036  
212.302.5200 voice 212.302.5374 fax  
www.theroadcompany.com

**CASTING BY**

DUNCAN STEWART AND COMPANY  
Duncan Stewart, C.S.A.; Benton Whitley, C.S.A.;  
Andrea Zee

Production Stage Manager . . . . . Melissa Chacón  
Stage Manager . . . . . Mitchell B. Hodges  
Assistant Stage Manager . . . . . Patricia L. Grabb  
Assoc. Director/Choreographer . . . . . Tracey Flye  
Senior Asst. Choreographer . . . . .  
. . . . . Kelly Fletcher Pedneault  
Asst. Choreographer . . . . . Marc Kimelman  
Associate Set Designer . . . . . Ric Lipson  
Associate Costume Designer . . . . . David Newell  
Assistant Costume Designer . . . . . Brooke Cohen  
Associate Lighting Designer . . . . . Anthony Pearson  
Moving Light Programmer . . . . . Dieter Broemson  
Video Programmer . . . . . Ben Keightley  
Production Electrician . . . . . Kevin Richie  
Associate Music Supervisor . . . . . Matt Spencer-Smith  
Assistant to John Miller . . . . . Jennifer Coolbaugh  
Production Sound . . . . . IRES-Partners  
Assoc. Sound Designer . . . . . Garth Helm  
West End Sound Engineer . . . . . Simon Sayer  
Head Carpenter . . . . . Keith A. Keene  
Flyman/Automation . . . . . Jason Fehlen  
Asst. Carpenter . . . . . Kevin Riggall  
Head Electricians . . . . . Eric Briggs  
Assistant Electricians . . . . . Kaycee Perry  
Assistant Electricians . . . . . Matt Hrinko  
Sound Engineer/A1 . . . . . Brad Zuckerman  
Assistant Audio . . . . . Renee Levine  
Assistant Audio . . . . . Alberto Yong  
Head Props . . . . . Aaron Gilman  
Head Wardrobe . . . . . Kristina May  
Assistant Wardrobe . . . . . Emily Fauscett  
Head Hair & Makeup . . . . . Bryon McDonald  
Keyboard Programmer . . . . . Hiro Iida, Jeff Leach  
Production Assistants . . . . . Nathan Heldstab,  
Zachary Gray  
National Press Representatives . . . . . Shore Fire Media  
Physical Therapy. NEURO TOUR/Carolyn Lawson  
Production Videographer . . . . . HMS Media, Inc.  
Production Photographer . . . . . Michael Brosilow,  
Kyle Froman  
Website . . . . . Outside Line

Production Photography . . . . . Paul Kolnik  
Accounting . . . . . NETWORKS Presentations LLC  
Tour Accountant . . . . . Paula Jenkins  
HR & Payroll Services . . . . . Human Resources inc  
Legal Counsel . . . . . F Richard Pappas, Esq.  
Insurance . . . . . Maury, Donnelly &  
Parr - Bob Middleton, Meghan Shriver  
Trucking . . . . . Clark Transfer  
Hotel Booking . . . . . Lisa Morris, Road Concierge  
Cast Bus Booking . . . . . Mary Botosan, Road Concierge  
Crew Bus . . . . . Dream Catcher Coaches  
Merchandising . . . . . The Araca Group

**TRIBECA THEATRICAL PRODUCTIONS**

Co-Founder/Partner . . . . . Jane Rosenthal  
Co-Founder/Partner . . . . . Robert De Niro  
Vice President of Production . . . . . Berry Welsh  
Vice President of Comm. . . . . Tammie Rosen  
Executive Assistant . . . . . Alexandra Winogora  
Assistant . . . . . Laura Czerepak

**FOR NETWORKS PRESENTATIONS**

Chief Executive Officer . . . . . Kenneth Gentry Chief  
Operating Officer . . . . . Scott W. Jackson  
President . . . . . Orin Wolf  
Executive Vice President Production . . . . .  
. . . . . Seth Wenig  
Director of Finance . . . . . John Kinna  
Controller . . . . . Jennifer Gifford  
Executive Producers . . . . . Kary M. Walker, Dani Davis  
Associate Producer . . . . . Angela Rowles  
Director of Booking . . . . . Charmaine McVicker Senior  
General Manager . . . . . Gregory VanderPloeg  
General Managers . . . . . Mary K. Witte,  
Guy Jordin Heard, Tyler Soltis  
Assoc. General Manager . . . . . Bobby Maglaughlin,  
Curt Owens  
Assistant General Managers . . . . . Penelope Lopez  
Senior Production Manager . . . . . Jason Juenker  
Production Managers . . . . . Ben Neafus, Laura Dieli  
Associate Production Manager . . . . . Evan Rooney  
Assistant Production Manager . . . . . Ashley Harman  
Warehouse Manager . . . . . Brad Korff  
Director of Marketing/PR . . . . . Heather Hess  
Database Manager . . . . . Siba Mahanty  
Music Coordinator . . . . . John Mezzio  
Office Manager . . . . . Buddy Piccolino  
Administrative Assistant . . . . . Esther Schwarzbauer

Tax & Financial Consulting Accounting Services,  
IT Services  
**CliftonLarsonAllen LLP**  
**George Wilson, Linda Rubenstein,**  
**Pat Guerieri, Tim Pizza**

**Financial Services and banking arrangements by**  
M&T Bank

**CREDITS**

Scenery constructed by Virginia Scenic.  
Automation equipment provided by PRG Scenic  
Technologies. Lighting equipment from Christie  
Lights. Sound equipment by Sound Associates.  
Video equipment provided by Sound Associates.  
Rigging by Christie Lights. Laser Effects provided  
by X-Laser. Costume Shop Timberlake Studios.  
Scenic elements constructed by Scenic Solutions.  
Drums supplied by TreeHouse Drums.

**REHEARSAL STUDIOS**  
The New 42 Street Studios

**SPECIAL THANKS**

Special thanks to Charles D'Atri and



The Actors and Stage Managers  
employed in this production are  
members of Actors' Equity Association,  
the Union of Professional Actors and  
Stage Managers of the United States.



The following employees are represented  
by the International Alliance of Theatrical  
Stage Employees, Moving Picture Machine  
Operators, Artists and Allied Crafts of the  
United States, its Territories and Canada, AFL-CIO,  
CLC: Stage Crew Local 33; Local Treasures and  
Ticket Sellers Local 857; Wardrobe Crew Local 768;  
Make-up Artists and Hair Stylists Local 706.



The Musicians, Conductors, Music  
Preparation Personnel and Librarians  
employed in this production are members  
of the American Federation of Musicians of the  
United States and Canada.

**ATPAM**

The Press Agents and House  
Managers employed in this  
production are represented by the Association of  
Theatrical Press Agents & Managers.



The Director is a member of the Society  
of Stage Directors and Choreographers,  
Inc., an independent national labor union.



United Scenic Artists represents  
designers and scenic artists for the  
American Theatre.



This production is produced by a member  
of The Broadway League in collaboration  
with our professional union-represented  
employees.

Center Theatre Group is a member of the American  
Arts Alliance, the Broadway League, Independent  
Producers' Network (IPN), LA Stage Alliance,  
League of Resident Theatres (LORT), National  
Alliance for Musical Theatre (NAMT) and the  
Theatre Communications Group (TCG)



**ONLINE**

CenterTheatreGroup.org  
#WWRY

Like us on facebook **Center Theatre Group**  
Follow us on Twitter **@CTGLA**  
Subscribe on YouTube **CTGLA**  
Follow us on Instagram **@CTGLA**

Latecomers will be seated at the discretion of the management. Patrons with disabilities: wheelchair seating is available in a variety of theatre locations.

When ordering your tickets, please indicate any special needs. For our hearing-impaired guests, the theatre is equipped with listening devices; please contact an usher for assistance.

**CENTER THEATRE GROUP L.A.'s Theatre Company**  
 MICHAEL RITCHIE, Artistic Director    EDWARD L. RADA, Managing Director  
 DOUGLAS C. BAKER, Producing Director

**ARTISTIC**

NEEL KELLER ..... Associate Artistic Director  
 KELLEY KIRKPATRICK ..... Associate Artistic Director  
 DIANE RODRIGUEZ ..... Associate Producer/Director of New Play Production  
 PIER CARLO TALENTI ..... Resident Dramaturg/Literary Manager  
 LINDSAY ALLBAUGH ..... Producing Associate  
 PATRICIA GARZA ..... New Play Production Manager  
 JOY MEADS ..... Literary Associate and Artistic Engagement Strategist  
 MARK B. SIMON ..... Casting Director  
 MEG FISTER ..... Casting Associate  
 STEVEN PIESZCHALKSI ..... Casting Assistant

DAVID ADJMI (FADIMAN), JESSICA BLANK, SHEILA CALLAGHAN (FADIMAN), TIM CROUCH, JUSTIN ELLINGTON, GINA GIONFRIDDO, GOB SQUAD, MATT GOULD, DANAI GURIRA, JENNIFER HALEY, JOE HORTUA, ERIK JENSEN, RAJIV JOSEPH, GRIFFIN MATTHEWS, LAURAL MEADE, DAN O'BRIEN, EVANGELINE ORDAZ, DAEL ORLANDERSMITH, WILL POWER (FADIMAN), RAINPAN 43, MARCO RAMIREZ, MATT SAX, YOUNG JEAN LEE THEATER COMPANY ..... Commissioned Artists

BEKAH BRUNSTETTER, CARLA CHING, JASON GROTE, SARAH GUBBINS, TIM McNEIL, HENRY ONG, MADHURI SHEKAR ..... CTG Writers' Workshop Members

**EDUCATION AND COMMUNITY PARTNERSHIPS**

LESLIE K. JOHNSON ..... Director of Education and Community Partnerships  
 TRACI CHO KWON ..... Director of School Partnerships  
 CAMILLE SCHENKKNAN ..... Program Manager, Emerging Artists and Arts Professionals  
 JESUS REYES ..... Program Manager, Community Partnerships  
 KATRINA FRYE ..... Program Associate  
 MELISSA HERNANDEZ ..... Program Associate  
 ROSEMARY MARSTON-HIGDON ..... Program Associate  
 KELLY MUCHNICK ..... Communications Coordinator  
 SHANNON WINSTON ..... Department Coordinator  
 DEBRA PIVER ..... Resident Teaching Artist

**MANAGEMENT AND ADMINISTRATION**

NAUSICA STERGIOU ..... General Manager (Mark Taper Forum, Kirk Douglas Theatre)  
 JEFFREY UPAH ..... General Manager (Ahmanson Theatre)  
 SUZANNE HEE MAYBERRY ..... Assistant General Manager (Mark Taper Forum)  
 KATIE BRUNER SOFF ..... Assistant General Manager (Kirk Douglas Theatre, NPP)  
 ALANA BEIDELMAN ..... Executive Assistant to Managing Director  
 TIFFANY MOON ..... General Management Associate

ERIC SIMS ..... Operations Manager (Kirk Douglas Theatre)  
 TOM BURMESTER ..... Audience Experience Design/Front of House Mgr (Kirk Douglas Theatre)  
 LAUREN BAXA ..... Assistant Performance Manager (Kirk Douglas Theatre)  
 MAX OKEN ..... Facility Assistant (Kirk Douglas Theatre)  
 SONDRRA MAYER ..... Concessions Manager (Kirk Douglas Theatre)

**PRODUCTION**

DAWN HOLISKI ..... Production Department Operations Director  
 JOE HAMLIN ..... Technical Director/Ahmanson Production Manager  
 SHAWN ANDERSON ..... Master Carpenter (Ahmanson Theatre)  
 ANDREW W. ARNOLD ..... Flyman (Ahmanson Theatre)  
 STAN STEELMON ..... Master Propertyman (Ahmanson Theatre)  
 JIM BERGER ..... Master Electrician (Ahmanson Theatre)  
 ROBERT SMITH ..... Master Soundman (Ahmanson Theatre)  
 MICHAEL GARDNER ..... Wardrobe Supervisor (Ahmanson Theatre)  
 PATRICE MIRANDA ..... Hair and Make-up Supervisor (Ahmanson Theatre)  
 CHRISTINE L. COX ..... House Manager (Ahmanson Theatre)

CHAD SMITH ..... Associate Technical Director  
 SAM CRAVEN-GRIFFITHS ..... Associate Technical Director

ANDREW THIELS ..... Prop Manager  
 MERRIANNE NEDREBERG ..... Associate Prop Manager  
 SARAH KRAININ ..... Prop Associate  
 CANDICE CAIN ..... Costume Director  
 BRENT M. BRUIN ..... Costume Workroom Supervisor  
 MADDIE KELLER ..... Costume Generalist  
 SWANTJE TUOHINO ..... Tailor  
 ELIZABETH LEONARD ..... Production Operations Manager  
 JULIO A. CUELLAR ..... Driver/Custodian  
 DONAVAN MARTINELLI, EUGENE A. MONTEIRO II, BRIAN SLATEN ..... Drivers  
 JENNIFER ACHTERBERG ..... Production Administrator

JONATHAN BARLOW LEE ..... Production Manager (Mark Taper Forum)  
 EMMET KAISER ..... Master Carpenter (Mark Taper Forum)  
 ROBERT RUBY ..... Master Propertyman (Mark Taper Forum)  
 WILLIAM MORNER ..... Master Electrician (Mark Taper Forum)  
 BONES MALONE ..... Master Soundman (Mark Taper Forum)  
 DENNIS SEETOO ..... Wardrobe Supervisor (Mark Taper Forum)  
 RICK GEYER ..... Hair & Make-up Supervisor (Mark Taper Forum)  
 LINDA WALKER ..... House Manager (Mark Taper Forum)

CHRISTY WEIKEL ..... Production Manager (Kirk Douglas Theatre)  
 KATE COLTUN ..... Assistant Production Manager (Kirk Douglas Theatre)  
 RICHARD PETERSON ..... Master Electrician (Kirk Douglas Theatre)  
 AARON STAUBACH ..... Light Board Programmer/Operator (Kirk Douglas Theatre)  
 ADAM PHALEN ..... Head Audio (Kirk Douglas Theatre)  
 VICTOR COBOS ..... Stage Supervisor (Kirk Douglas Theatre)

**FINANCE, INFORMATION SYSTEMS AND HUMAN RESOURCES**

MICHAEL F. THOMPSON ..... Chief Financial Officer  
 MELODY MATTOS ..... Contoller  
 JANI BOWBER ..... Assistant Contoller  
 XOCHITL RAMIREZ ..... Accounts Payable Coordinator  
 FELICISIMA LAPID ..... Accounts Payable Specialist  
 DANNY LAMPSON ..... Senior Staff Accountant  
 ALEGRIA SENA ..... Staff Accountant  
 YUEN KI "ANNIE" LAW ..... Payroll Manager  
 AMEETA SHARMA ..... Payroll Specialist

DAVE ALTON ..... Chief Information Officer  
 STAN GRUSHESKY ..... Director of Information Systems  
 SEAN PINTO ..... Database and Web Manager  
 MANDY RATLIFF ..... DBA, Tesseract Administrator  
 JARED WATANABE ..... Information Systems Analyst

JODY HORWITZ ..... Director of Human Resources  
 MADRIO FLEEK ..... Senior Human Resources Generalist  
 SINGER LEWAK, LLP ..... Auditor  
 MICHAEL C. DONALDSON, LISA A. CALLIF ..... Legal Counsel  
 GIBSON, DUNN & CRUTCHER ..... Legal Counsel

**DEVELOPMENT**

YVONNE CARLSON BELL ..... Director of Development  
 PATRICK OWEN ..... Deputy Director of Development  
 NATALIE BERGESON ..... Director of Donor Contributions  
 JEAN KLING ..... Director of Institutional Support  
 LIZ LIN ..... Director of Corporate Relations and Communications  
 CHARITY WU ..... Director of Individual Giving  
 BECKY BIRDSONG ..... Major Gifts Officer  
 RYAN HONEY ..... Associate Director of Special Initiatives  
 MANDI OR ..... Special Events Manager  
 ERIC BROWN ..... Communications Coordinator  
 JENNIFER CHAN ..... Special Events Associate  
 JUSTIN FOO ..... Donor Contributions Associate  
 SARAH HARBURG-PETRICH ..... Development Assistant  
 KATY HILTON ..... Grant Writer  
 DONALD JOLLY ..... Donor Relations Associate for the Inner Circle  
 KRISTEN LEVY-VAUGHAN ..... Individual Giving Assistant  
 JESSICA NASH ..... Donor Contributions Supervisor  
 KIM OKAMURA ..... Institutional Giving Associate  
 MARIA PAREDES ..... Donor Relations Associate for The Guild  
 ERIC SEPPALA ..... Executive Assistant to the Development Director  
 ERIN SCHLABACH ..... Major Gifts Coordinator  
 JESSICA THORSON ..... Corporate Relations Coordinator

AL BERMAN, ERIN BUTLER, ELIZABETH DELLORUSSO, DAVID GARVER, GINA EAST, LILI HERRERA, TONY LEWELLEN, HOLLY RAMOS, NICOLE SCIPIONE, LENA THOMAS, PAUL VITAGLIANO, BILL WALTON, TOM WINKLER ..... Donor Advisors  
 ADAM BURCH, KARLA GALVEZ ..... Donor Services Associates  
 ANNE BRUNER, MURRAY E. HELTZER, MARCI MILLER, JULIE NADAL ..... Development Volunteers

**MARKETING AND COMMUNICATIONS**

KORY P. KELLY ..... Director of Marketing and Communications

NANCY HEREFORD ..... Media and Communications Director  
 PHYLLIS MOBERLY ..... Media and Communications Associate  
 JASON MARTIN ..... Media and Communications Associate  
 CHELSEY ROSETTER ..... Media and Communications Coordinator

NISHITA DOSHI ..... Art Director  
 IRENE KANESHIRO ..... Senior Design Manager  
 HARUKA HAYAKAWA ..... Graphic Designer  
 JAVIER VASQUEZ ..... Graphic Designer  
 LOYDA GUADAMUZ ..... Temporary Graphic Designer

ANDREW DARCEY ..... Advertising Manager  
 KAREN VOCK ..... Marketing Manager  
 JAMES SIMS ..... Marketing Creative Manager  
 JEWEL MOORE ..... Marketing Coordinator  
 ROSE POIRIER ..... Webmaster  
 CRAIG SCHWARTZ ..... Production Photographer  
 LARRY DEAN HARRIS ..... Copywriter  
 CINEVATIVE/MARK CIGLAR ..... Production Video  
 ALLIED LIVE:  
 LAURA MATALON, SHANNON WILLETT, KELLY ESTRELLA ..... Advertising Agency

**TICKET SALES AND SERVICES**

SHAWN ROBERTSON ..... Ticket Sales Director  
 SKYPP CABANAS ..... Ticket Operations Coordinator  
 SANDY CZUBIAK ..... Audience and Subscriber Services Manager  
 JENNIFER BAKER, CHERYL HAWKER, RICHARD RAGSDALE ..... Audience Services Supervisors  
 ALICE CHEN ..... Audience Services Asst. Supervisor  
 SAM AARON, DEBORAH REED ..... Audience Services Sales Associates

JEREMIE ARENCIBIA, VICKI BERNDT, CARLOS D. CHAVEZ, JR., PETER COLBURN, DONALD CRANDALL, GARY HOLLAND, EILEEN PEREZ, JUSTINE PEREZ, LEX SAVKO, DANNY SCHMITZ, CRIS SPACCA ..... Audience Services Representatives

DANUTA SIEMAK ..... Subscriber Services Supervisor  
 CHRISTINA GUTIERREZ ..... Subscriber Services Asst. Supervisor  
 LIGIA PISTE, CELIA RIVAS ..... Subscriber Services Senior Representatives  
 IRENE CHUANG, PETER STALOCH ..... Subscriber Services Representatives

SARAH K. GONTA ..... Box Office Treasurer KISHISA ROSS, GISELE FRAZEUR  
 Assistant Treasurers  
 ANGELICA CARBAJAL, MICHAEL KEMPISTY, LEROY PAWLOWSKI,  
 MICHAEL SALTZMAN ..... Box Office Staff  
 MICHAEL ZOLDESSY ..... Account Sales Manager  
 EILEEN ROBERTS ..... Account Sales Associate  
 KERRY KORF ..... Priority Services Director  
 SUSAN F. TULLER ..... Priority Services Operations Manager  
 JAY BURNS ..... Priority Services Sales Manager  
 PAUL CUEN ..... Priority Services Manager  
 CANDICE WALTERS ..... Priority Services Assistant Supervisor

RACHEL BRINK, MAGGIE DODD, NIC DRESSEL, SOFIJA DUTCHER, MARC "BYRON" DROTMAN, SAMANTHA ELSE, LOU GEORGE, KATE HALL, LISA KESSLER, SHEP KOSTER, MATT PELFREY, DONALD RIZZO, KEN SALLEY, KRISTEN SCHRASS, BOBBI LYNNE SCOTT, ANDREW SEVERYN, MICHAEL SMITH, QUINN SULLIVAN, DIANE WARD, JIM WATERMAN Representatives

**INTERNS**

NICOLE ARCA, JIM BLACKETT, KASSANDRA CELIS, HILARY FITZSIMMONS, MONIKA GOEBEL, JOHN JOHNSON, KATE JOPSON, EMILY MISCHEL, ERIC MITCHELL, NICHOLAS NAVARRO, CODY PHAPOL, PAIGE PHELAN, MATTHEW QUINLAN, JUAN SILVERIO, KAT WEPLER, DANIELE WIEDER

Center Theatre Group would like to thank its exceptional staff for their ongoing commitment, dedication and extraordinary efforts.