

# Kirk Douglas Theatre 2014/15 Season



## FIRST SEASON PRODUCTION

### Race

By David Mamet  
Directed by Scott Zigler  
August 31 – September 28, 2014

## SECOND SEASON PRODUCTION

Goodman Theatre  
World Premiere Production of  
**Luna Gale**

By Rebecca Gilman  
Directed by Robert Falls  
November 23 – December 21, 2014

## THIRD SEASON PRODUCTION

### Chavez Ravine

By Culture Clash  
Directed by Lisa Peterson  
January 27 – March 1, 2015

## FOURTH SEASON PRODUCTION

### Girlfriend

Book by Todd Almond  
Music and Lyrics by  
Matthew Sweet  
Directed by Les Waters  
July 12 – August 9, 2015

## DOUGLASPLUS

### Facing Our Truth: Ten-Minute Plays on Trayvon, Race and Privilege

In association with  
The New Black Fest  
July 13, 2014

### Western Society

Devised and Performed by  
Gob Squad  
Co-presented with and Performed at  
REDCAT  
United States Premiere  
September 17 – 20, 2014

### Forever

Written and Performed by  
Dael Orlandersmith  
Directed by Neel Keller  
World Premiere  
October 9 – 26, 2014

### Throw Me on the Burnpile and Light Me Up

Written and Performed by  
Lucy Alibar  
Directed by Neel Keller  
May 21 – 31, 2015

### How to be a Rock Critic

Based on the writing of  
Lester Bangs  
By Jessica Blank and Erik Jensen  
Performed by Erik Jensen  
Directed by Jessica Blank  
Presented at Upstairs@KDT  
World Premiere Production  
June 17 – 28, 2015

# Inspiring Our Future

---

## Special Thanks to Center Theatre Group's Most Generous Annual Patrons

Center Theatre Group wishes to thank the following donors for their significant annual gifts and for their belief in the transformative power of theatre.

\$1 MILLION AND ABOVE

Brindell Roberts Gottlieb

---

\$500,000 AND ABOVE

The Ahmanson Foundation

---

\$250,000 AND ABOVE

Center Theatre Group Affiliates  
Kirk & Anne Douglas  
The James Irvine Foundation  
The Andrew W. Mellon Foundation

---

\$150,000 AND ABOVE

Anonymous  
Bank of America  
The Blue Ribbon  
Patricia Glaser & Sam Mudie  
Laura & James Rosenwald & Orinoco Foundation  
Jeanette Shammast†  
The Shubert Foundation, Inc.  
Eva & Marc Stern  
Wells Fargo Foundation

---

\$100,000 AND ABOVE

Ann & Stephen F. Hinchliffe, Jr.  
Los Angeles County Arts Commission  
JPMorgan Chase & Co.  
Deidra Norman Schumann

---

\$75,000 AND ABOVE

Elisabeth Katte Harris Trust  
William Randolph Hearst Foundation  
The Ralph M. Parsons Foundation  
Lloyd E. Rigler — Lawrence E. Deutsch Foundation

---

†Deceased

---

This list includes gifts made to Center Theatre Group  
between May 30, 2013, and July 30, 2014.



**Center Theatre Group**  
L.A.'s Theatre Company

Ahmanson Theatre  
Mark Taper Forum  
Kirk Douglas Theatre

**Michael Ritchie**, ARTISTIC DIRECTOR **Edward L. Rada**, MANAGING DIRECTOR **Douglas C. Baker** PRODUCING DIRECTOR  
**Gordon Davidson**, FOUNDING ARTISTIC DIRECTOR

presents

# RACE

BY

**David Mamet**

WITH

**Chris Bauer** **Dominic Hoffman** **Jonno Roberts** **DeWanda Wise**

SCENIC DESIGNER

**Jeffery P. Eisenmann**

COSTUME DESIGNER

**Leah Piehl**

LIGHTING DESIGNER

**Josh Epstein**

CASTING

**Mark B. Simon, CSA**

ASSOCIATE PRODUCER

**Lindsay Allbaugh**

PRODUCTION STAGE MANAGER

**Kirsten Parker**

DIRECTED BY

**Scott Zigler**

August 31 – September 28, 2014  
Kirk Douglas Theatre

Original Broadway production produced by Jeffrey Richards, Jerry Frankel, Jam Theatricals, JK Productions, Peggy Hill & Nicholas Quinn Rosenkranz, Scott M. Delman, Terry Allen Kramer/James L. Nederlander, Swinsky Deitch, Bat-Barry Productions, Ronald Frankel, James Fuld Jr., Kathleen K. Johnson, Terry Schnuck, The Weinstein Company, Marc Frankel, Jay & Cindy Gutterman/Stewart Mercer.

---

Please turn off all electronic devices such as cellular phones, PDAs, beepers and watch alarms. The use of any recording device, either audio or video, and the taking of photographs, with or without flash, is strictly prohibited.



(BACK ROW): cast members Chris Bauer and Dominic Hoffman and  
(FRONT ROW): DeWanda Wise and Jonno Roberts during the first rehearsal for David Mamet's *Race*.

#### CAST

(in order of appearance)

Henry Brown . . . . .	<b>Dominic Hoffman</b>
Charles Strickland . . . . .	<b>Jonno Roberts</b>
Jack Lawson . . . . .	<b>Chris Bauer</b>
Susan . . . . .	<b>DeWanda Wise</b>

#### STAGE MANAGERS

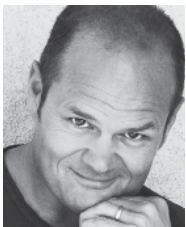
**Michael Vitale    Brooke Baldwin**

#### SETTING

An office

*Race* is performed with one intermission.

## Who's Who



**CHRIS BAUER** (*Jack Lawson*) currently stars as Detective Andy Bellefleur in HBO's hit series *True Blood*, returning for its seventh and final season. He is

also well known for the HBO series *The Wire* in an acclaimed performance as union boss Frank Sobotka. For HBO Films, Bauer appeared in *61\**, directed by Billy Crystal, as well as *The Notorious Bettie Page* and *Bernard and Doris*. On television, Bauer was a series regular on NBC's *Third Watch*, CBS' *Smith* and

ESPN's *Tilt*, and has appeared in feature films from many of Hollywood's biggest directors such as Clint Eastwood, Woody Allen, John Woo, Steve Buscemi and Joel Schumacher, among others. Bauer made his Broadway debut in *A Streetcar Named Desire* in 2005, for which he was nominated for an Outer Critics Circle Award. A graduate of the Yale School of Drama, Bauer has maintained a low profile throughout his career and success and can truly be hailed as an Actor's Actor.

**DOMINIC HOFFMAN** (*Henry Brown*). Stage appearances include solo shows *Last Fare* and Uncle Jacques' *Symphony*. He was Michael in Lee Blessing's



play, *Two Rooms*, and the Magus in San Francisco Magic Theatre's world premiere of *Faustus*, written and directed by David Mamet. Regional credits

include *Taming of the Shrew* and *Tamer Tamed* at Santa Cruz Shakespeare, *Master Harold and the Boys* at New Mexico Rep, the title role in the world premiere of *Noah Johnson Had a Whore* at South Coast Repertory, *Flyin' West* at San Diego Rep, *That Serious He-Man Ball* at Los Angeles Theatre Center, Gabe

Gabriel in *No Place to Be Somebody* at San Francisco's Victoria Theatre, *Blade to the Heat* at the Mark Taper Forum, and Circle X's production of Brecht's *Edward II*. Dominic is also a writer of plays, television and film.



**JONNO ROBERTS**

(Charles Strickland) is from New Zealand. Broadway: *Take Me Out*. Off-Broadway: *Bug*, *Monster*. Regional: *The*

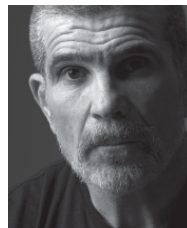
*Tempest*, *Much Ado About Nothing*, *The Taming of the Shrew*, *King Lear* (The Old Globe, San Diego), *Camino Real*, *King Lear* (Goodman Theatre, Chicago), *Mother Courage*, *Richard II*, *Antigone* (American Repertory Theatre, Cambridge), *A Streetcar Named Desire* (Intiman Theatre, Seattle). He has also performed in theatres throughout Europe, New Zealand and Russia. Film: *The Elephant King*. TV: Series regular on NZ comedy series *Short Poppies* (exclusively on Netflix), recurring roles on *Bones* and *Person of Interest*, 20 guest-star roles and counting. Jonno holds a master's degree in Acting from the Moscow Arts Theatre School in Russia and completed his studies at the Institute for Advanced Theatre Training at Harvard University. This is his first play in Los Angeles.



**DEWANDA WISE**

(Susan). New York Theatre: *Sunset Baby* (Labyrinth), *Sundown Name and Night-Gone Things* (Negro Ensemble Company), *As it Is In*

*Heaven* (3Graces), *Electra* (Tisch). Select Regional Credits: *Flight* (City Theatre, Pittsburgh), *In the Continuum* (Playmakers, Chapel Hill). Film: ABC's *Firelight*, *Spinning into Butter*, *Steam*, *African Booty Scratcher*, *Precious*, *Pariah*. TV: *Boardwalk Empire*, *The Mentalist*, *Criminal Intent*, *SVU*, *The Good Wife*, *The Unusuals* and *Gamekillers* for MTV. Upcoming: *My Manz* directed by Alrick Brown, among others. DeWanda is a proud member of Equity and SAG-AFTRA. She is a Tisch Scholar Award recipient, an Atlantic Achievement in Studio Award recipient and the BFA Representative (Valedictorian) of her graduating class of NYU's Tisch School of the Arts.



**DAVID MAMET**

(Playwright) is the author of the plays: *The Anarchist*, *Race*, *Keep Your Pantheon*, *School*, *November*, *Romance*, *Boston Marriage*, *Faustus*,

*Oleanna*, *Glengarry Glen Ross* (1984 Pulitzer Prize and New York Drama Critics Circle Award), *American Buffalo*, *The Old Neighborhood*, *A Life in the Theatre*, *Speed-the-Plow*, *Edmond*, *Lakeboat*, *The Water Engine*, *The Woods*, *Sexual Perversity in Chicago*, *Reunion* and *The Cryptogram* (1995 Obie Award). His translations and adaptations include *Faustus* and *Red River* by Pierre LaVille, and *The Cherry Orchard*, *Three Sisters* and *Uncle Vanya* by Anton Chekov. His films include *The Postman Always Rings Twice*, *The Verdict*, *The Untouchables*, *House of Games* (writer/director), *Oleanna* (writer/director), *Homicide* (writer/director), *The Spanish Prisoner* (writer/ director), *Heist* (writer/director), *Spartan* (writer/director), *Redbelt* (writer/ director), *Phil Spector* (writer/director). Mr. Mamet is also the author of *Warm and Cold*, a book for children with drawings by Donald Sultan, and two other children's books, *Passover* and *The Duck and the Goat*; *Writing in Restaurants*, *Some Freaks*, and *Make-Believe Town*, three volumes of essays; *The Hero Pony* and *The Chinaman*, two books of poems; *Three Children's Plays*, *On Directing Film*, *The Cabin*, and the novels *The Village*, *The Old Religion* and *Wilson*. His most recent books include the acting books, *True & False*, *Three Uses of the Knife*, *Bambi Vs. Godzilla*, *Three War Stories*, and *The Secret Knowledge*. *Glengarry Glen Ross* was awarded the Tony Award for Best Revival of a Play in 2005.



**SCOTT ZIGLER**

(Director). Broadway: *The Old Neighborhood*. Off-Broadway: *The Cherry Orchard* (world premiere, Tom Donaghy

adaptation), *The Woods*, *Sure Thing*, *Suburban News* (world premiere), *As You Like It*, *Strawberry Fields* (Atlantic Theater Company). National Tour: *Oleanna*. Regional: *November* (Mark Taper Forum), *The Cryptogram*, *A Fair Country* (Steppenwolf Theatre Company), *Romance*, Ellen McLaughlin's *Ajax in Iraq* (world premiere), *Copenhagen*, *Animals and Plants*, *Absolution*, *The Old Neighborhood*

(world premiere), *The Cripple of Inishmaan* (American Repertory Theater), *Race* (Philadelphia Theatre Company), *Glengarry Glen Ross* (McCarter Theatre), *The Cryptogram* (Alley Theatre), *Spinning Into Butter* (Repertory Theatre of St. Louis). Founding member, past Artistic Director and senior acting faculty, Atlantic Theater Company; Director, American Repertory Theater/Moscow Art Theatre School Institute for Advanced Theater Training at Harvard University; Co-author, *A Practical Handbook for the Actor*.



**JEFFERY P. EISENMANN**

(Scenic Designer) is resident designer of Teatr Pokoleniy, (St. Petersburg Russia). In addition to

designing for their regular repertory, Jeffery provides design and technical consultation on productions touring to festivals in Russia, Germany, Macedonia and Switzerland. He has designed for companies such as The Pasadena Playhouse, the Elephant Theatre, Pacific Resident Theater, the Odyssey Theatre (L.A.), Junges Theatre Göttingen (Germany), Opera Theater of Pittsburgh, Spoleto Festival USA (Charleston, SC), CALRep, The Garage Theatre (Long Beach), Rutgers University, Columbia University, The Alternate Theater and Abingdon Theatre (New York). His set models have exhibited in New York, London, St. Petersburg, and at the Prague Quadrennial (2003). Jeffery is Head of Design at California State Polytechnic University, Pomona.

**LEAH PIEHL** (Costume Designer). *The Steward of Christendom* (Mark Taper Forum), *A Christmas Carol: Twist Your Dickens!* (Kirk Douglas Theatre), *The Most Deserving* (Denver Center Theatre), *The Motherf\*\*ker with the Hat* and *The Light in the Piazza* (South Coast Repertory), *Intimate Apparel* (LADCC Award – Best Costume Design, NAACP nomination) and *The Heiress* (Ovation nomination, Pasadena Playhouse), *The Dinosaur Within*, *Futura*, *Tartuffe* and *The Pain and the Itch* (Theatre @ Boston Court), *Come Back, Little Sheba*; *The Doctor's Dilemma* and *The Eccentricities of a Nightingale* (A Noise Within), *Satyr Atlas* (The Getty Villa), *bobrauschenbergamerica* and *Tree* ([Inside] the Ford), *Love Water* (Open Fist Theatre). New York: *Bull Spears* (La Tea Theater), *Someone in Florida Loves Me* (Paradise Factory). Regional: *Paradise Lost* (Intiman Theatre), *The Borrowers*,

*Robin Hood* (South Coast Repertory). Leah also works in television and film. She teaches at USC and has a B.A. from UC Berkeley and her MFA in costume design from CalArts. [www.leahpiehl.com](http://www.leahpiehl.com).



**JOSH EPSTEIN**  
(Lighting Designer).  
CTG: *November* at the Mark Taper Forum (directed by Scott Zigler).  
Regional Theatre: the Guthrie, The

Goodman, Baltimore Center Stage, Trinity Rep, Long Wharf Theatre, Paper Mill Playhouse, Alliance Theatre, Actors Theatre of Louisville, Playmaker's Rep, Cincinnati Playhouse in the Park. New York: Juilliard School of Drama, Labyrinth Theater Company, Rattlestick Playwrights Theater, La MaMa, Naked Angels, Macy's New York City Holiday Windows. Opera: Minnesota Opera, Opera Santa Barbara, Wolf Trap Opera Company, Berkshire Opera, Manhattan School of Music. Teaching: Adjunct Faculty at UCLA School of Theater, Film and Television. Education: MFA from NYU's Tisch School of the Arts. Awards: Recipient of the NEA/TCG Career Development Program for Designers, O'Neill National Playwrights Conference Artistic Council.  
[www.joshepsteindesign.com](http://www.joshepsteindesign.com).



**MARK B. SIMON**  
(Casting) is Casting Director of Center Theatre Group.  
Current projects include *Race*, *Marjorie Prime*, *The Trip To Bountiful* and

*What The Butler Saw*. Prior to joining CTG, he was a New York-based independent casting director for clients including Hal Prince, Jason Robert Brown, Graciela Daniele, Susan Stroman, Patricia Birch, Stephen Sondheim, Marvin Hamlisch, Nick Hytner, Alfred Uhry, Carol Burnett, Jeremy Sams, Chris Durang, New York City Opera and the Radio City Christmas Spectacular. Projects have included *13*, *Parade*, *The Last Five Years*, *Show Boat*, *Candide*, *3hree*, *Hollywood Arms*, *Bounce*, *Lovemusik*, *Paradise Found*, *Sweeney Todd*, *Chita Rivera: The Dancer's Life*, *Sweet Smell of Success* and *Ragtime*. Treasurer of the Board, Casting Society of America.

**KIRSTEN PARKER** (Production Stage Manager). Center Theatre Group: *Facing Our Truth*, *different words for the*

*same thing*, *I'll Go On* (Gate Theatre Production), *A Christmas Carol: Twist Your Dickens!* (world premiere and re-loaded production), *Neva* (co-production with South Coast Rep and La Jolla Playhouse), *The Nether*, *Jomama Jones: Radiate* (KDT workshop), *The Massoud Project* (Taper workshop). Off-Broadway: *Food and Fadwa* (New York Theatre Workshop, ASM), *Five Second Chances* and *Icarus Burns* (Playwrights Realm, readings). Regional: *Romeo and Juliet* (Northern Stage), *Romeo and Juliet* (Yale Repertory Theatre), *The Servant of Two Masters* (Yale Rep, ASM). Other New York Credits: *Break* (N.Y. Fringe Festival), *Her Lightness* (Yale Rep, workshop), *69°S: The Shackleton Project* (PhantomLimb, Workshop). Ojai Playwrights Conference '13 & '14 (Company Manager). MFA: Yale School of Drama.

**MICHAEL VITALE** (Stage Manager). Center Theatre Group: *The Black Suits*. Regional: *Rapture*, *Blister*, *Burn* and *The Birthday Party* (Geffen Playhouse). Other L.A.: *Così fan tutte*, *Le Nozze di Figaro* (Los Angeles Philharmonic), *Hair*, *Chicago*, *The Producers*, *Hairspray*, *Rent* (Hollywood Bowl/Los Angeles Philharmonic), *I Due Foscari*, *La Bohème* (Los Angeles Opera), *A Snow White Christmas* (Pasadena Playhouse/Lythgoe Family Productions), *A Cinderella Christmas* (Lythgoe Family Productions). Michael holds an MFA in Stage Management from UC Irvine and currently teaches at California State University, Fullerton.

**BROOKE BALDWIN** (Stage Manager). Center Theatre Group: *different words for the same thing*, *The Nether*, *The Convert*, *Second City's A Christmas Carol: Twist Your Dickens*, *Venice*, *Burn This*, *The Night Watcher*, *Waiting for Godot*. Cabrillo Music Theatre: *Bye Bye Birdie*, *In The Heights*, *Kiss Me Kate*; Moonlight Stage Productions: *The Wizard of Oz*, *The Most Happy Fella*, *Cats*, *The Foreigner* and *Swingtime Canteen*. Kaiser Permanente Educational Theatre: *What Goes Around*. Geffen Playhouse: *Shipwrecked!*, *Time Stands Still*, *Through The Night* and *Love, Loss and What I Wore*. Reprise!: *I Love My Wife*. UCLA: *The Greeks*, *Cleansed*, *Homer in Cyberspace*, *Big Love* and *Anything Goes*.

#### FOR CENTER THEATRE GROUP

**MICHAEL RITCHIE** (Artistic Director) is in his ninth season as Center Theatre Group's Artistic Director, and has led over 170 productions to the Ahmanson, Taper and Douglas stages



since his arrival in 2005. From 1996 to 2004 Michael was the Producer of the Williamstown Theatre Festival and prior to that he was a Production Stage

Manager in NYC. At CTG, he premiered six musicals that moved to Broadway — *The Drowsy Chaperone* (which won 13 Tony Award nominations), *Curtains* (eight Tony nominations), *13, 9 to 5: The Musical*, *Bloody Bloody Andrew Jackson* and *Leap of Faith*. He has produced 39 world premieres including the musicals *Minsky's*, *Venice* and *Sleeping Beauty Wakes*, and the plays *Bengal Tiger at the Baghdad Zoo* (a Pulitzer Prize finalist that also moved to Broadway), *Water & Power* and *Yellow Face*, and he presented a broad range of plays and musicals ranging from *Dead End* to *The Black Rider* to *Edward Scissorhands* to blockbusters such as *God of Carnage*, *Mary Poppins*, *Jersey Boys* and *August: Osage County*. In addition, Michael inaugurated CTG's New Play Production Program, designed to foster the development and production of new work.



**EDWARD L. RADA**  
(Managing Director) returned to Center Theatre Group in 2011 after previously serving as CTG's Chief Financial Officer for 12 years

(1996–2008). Rada spent three years (2008–2011) as President of the Music Center Foundation, a non-profit corporation that holds and invests the endowment and reserve funds for the Music Center and its resident companies (including CTG). Prior to his years at CTG, he was the Director of Finance at The Old Globe in San Diego and principal of Rada & Associates, an accounting firm that specialized in entertainment-related non-profit organizations and theatrical productions. He is a graduate of Occidental College in Los Angeles with numerous post-graduate coursework and credentials. He currently serves on the board of directors for Entertainment Industry Foundation, Theatre @ Boston Court, and United Support of Artists for Africa/USA for Africa, among other affiliations. He also serves on the board of trustees for the pension, health and welfare and 401(k) plans of I.A.T.S.E. Local 33 Stagehands Union.



**DOUGLAS C. BAKER** (*Producing Director*) is now in his 24th season at CTG. Previously, he managed Broadway and touring productions including *Tru*, *Born*

*Yesterday*, *The Gospel at Colonus*, *Annie*, *A Chorus Line*, *Working*, *The Wiz*, and *Legends!*, which premiered at the Ahmanson Theatre in 1986 and starred Mary Martin and Carol Channing. Doug is a member of the Achievement Hall of Fame of Chagrin Falls Schools in Ohio and a graduate of Albion College. He is an active member of the Broadway League, the Independent Presenters Network and is a proud member of the Association of Theatrical Press Agents and Managers. In May 2013, Doug received The Broadway League's prestigious Outstanding Achievement in Presenter Management Award.

**NAUSICA STERGIU** (*General Manager, Mark Taper Forum and Kirk Douglas Theatre*) has worked professionally supporting artists in theatres of all shapes, sizes and locales including many seasons at Center Theatre Group as General Manager and, previously, as



Audience Development Director. She oversees main stage productions at the Taper and Douglas, as well as new play commissions and

developmental productions through CTG's New Play Development. Nausica has taught at USC's School of Dramatic Arts, and advises and works with local not-for-profits including Daukayev Ballet Theatre and Hollywood Orchard. MFA, Yale School of Drama and Outward Bound trekker.



**LINDSAY ALLBAUGH** (*Associate Producer*) is a member of Center Theatre Group's artistic staff and has served in varying capacities

for the past 10 years. Lindsay also serves as the artistic coordinator for CTG's Sherwood Award, which supports emerging Los Angeles artists. In addition to her work for CTG, Lindsay is the co-artistic director at the Elephant Theatre Company in Hollywood. Selected

producing credits include *The Steward of Christendom* at the Taper, *The Nether* at the KDT and *Waiting for Godot* at the Taper. Directing credits include the West Coast premieres of *100 Saints You Should Know* and *Never Tell* (Elephant), the world premiere of *Revelation* (Elephant), *Supernova* (Elephant) and *Kate Crackernuts*, *Gray City*, *Aloha Say the Pretty Girls* (Harvard/ART).



**GORDON DAVIDSON** (*Founding Artistic Director*) led the Taper throughout its first 38 seasons, guiding over 300 productions to its

stage and winning countless awards for himself and the theatre — including the Tony Award<sup>®</sup> for theatrical excellence, Margo Jones Award, The Governor's Award for the Arts and a Guggenheim fellowship. *The Kentucky Cycle* and *Angels in America* (Part One) won the Pulitzer in consecutive years and, in 1994, three of the four plays nominated for the Tony Award<sup>®</sup> for Best Play were from the Taper (*Angels in America* won). In 1989 Gordon took over the Ahmanson and, in 2004, he produced the inaugural season in the Kirk Douglas Theatre.

#### ADDITIONAL STAFF FOR RACE

Assistant Director . . . . . Julie Kusmierczyk  
 Assistant Costume Designer . . . . . Jenny Foldenauer  
 Assistant Lighting Designer . . . . . Meghan Hong  
 Sound Consultant . . . . . Adam Phalen  
 Audio Supervisor . . . . . Corwin Evans  
 Production Electricians . . . . . Juan Lozano, Lunchbox  
 Prop Assistant . . . . . Zach Istrin  
 Prop Shopper . . . . . Jamie Masters  
 Prop Artisans . . . . . Mara Holland, Patrick Smith  
 Scenic Artists . . . . . Katrina Coulourides, Katie Polebaum

#### CARPENTRY CREW

Eric Adams, Victor Cobos, Chris Cook, Beau Van Donkelaar, Richard Dunn, Samantha Else, Bo Foxworth, Eugene Monteiro II, Boude Moore, David Patrick, Katie Polebaum, Brian Slaten, Peter Wylie.

#### ELECTRICS CREW

Veronica Acosta, Rebecca Bonebrake, Katrina Coulourides, Evan Drane, Meghan Hong, Juan Lozano, Lunchbox, Jenna Pletcher, David Schwartz, Boston Stergis, Ryan Tirrell, Erin Whitcomb.

#### FRONT-OF-HOUSE LEADS

Trevor Algatt, Jaquelyn Johnson, Stephen Lydic, Elizabeth Motuapuaka, Michael Pappas.

#### CONCIERGES

Ashley Brown, Amy Buchwald, Lia Chapman, Olivia Choate, Shomari Cleveland, Denise Cunningham, Jessica DeBruin, Angela Garcia, Christina Hjelm, Britt Keller, Joan Kubicek, Gina Manziello, Janice Motuapuaka, Erin Mulvey, Nicole Naito, Isabella Patrini, Martin Roman-Figueroa.

#### CONCESSIONS

Abilene Gonzalez, Monica Greene, Sondra Mayer, Tatiana Rene Jones.

#### STAGE DOOR ATTENDANTS

Cory Aycock, Michael Hanson, Christopher Nucho, Ian Ray.

#### CREDITS

Costumes provided by the Center Theatre Group Costume Shop and additional staff:  
 First Hand – Ashley Rigg; Stitchers – Agnes Ingram, Leonardo Lopez.  
 Rehearsal and production photography by Craig Schwartz.

#### SPECIAL THANKS

Pegah Ebrahimi – Brooks Brothers.

#### ONLINE

CenterTheatreGroup.org #RACECTG  
 Like us on facebook **Center Theatre Group**  
 Follow us on Twitter @CTGLA  
 Subscribe on YouTube CTGLA  
 Follow us on Instagram @CTGLA

*Race* is presented by special arrangement with SAMUEL FRENCH, INC.

The videotaping or making of electronic or other audio and/or visual recordings of this production is a violation of United States copyright law and an actionable federal offense.



Center Theatre Group is a member of the American Arts Alliance, the Broadway League, Independent Producers' Network (IPN), LA Stage Alliance, League of Resident Theatres (LORT), National Alliance for Musical Theatre (NAMT) and the Theatre Communications Group (TCG).



The Actors and Stage Managers employed in this production are members of Actors' Equity Association, the Union of Professional Actors and Stage Managers of the United States.



The Director is a member of the Society of Stage Directors and Choreographers, Inc., an independent national labor union.

# CENTER THEATRE GROUP L.A.'s Theatre Company

MICHAEL RITCHIE, Artistic Director EDWARD L. RADA, Managing Director

DOUGLAS C. BAKER, Producing Director

## ARTISTIC

NEEL KELLER ..... Associate Artistic Director  
 KELLEY KIRKPATRICK ..... Associate Artistic Director  
 DIANE RODRIGUEZ ..... Associate Artistic Director  
 PIER CARLO TALENTI ..... Director of Dramaturgy and New Play Development  
 LINDSAY ALLBAUGH ..... Associate Producer  
 PATRICIA GARZA ..... New Play Production Manager  
 JOY MEADS ..... Literary Manager  
 MARK B. SIMON ..... Casting Director  
 MEG FISTER ..... Casting Associate

DAVID ADJMI (FADIMAN), JESSICA BLANK, SHEILA CALLAGHAN (FADIMAN), TIM CROUCH, JUSTIN ELLINGTON, GINA GIONFRIDDO, GOB SQUAD, MATT GOULD, DANAI GURIRA, JENNIFER HALEY, JOE HORTUA, ERIK JENSEN, RAJIV JOSEPH, GRIFFIN MATTHEWS, LAURAL MEADE, DAN O'BRIEN, EVANGELINE ORDAZ, DAEL ORLANDERSMITH, WILL POWER (FADIMAN), RAINPAN 43, MARCO RAMIREZ, MATT SAX, THE DEBATE SOCIETY, YOUNG JEAN LEE THEATER COMPANY  
 ..... Commissioned Artists

JOSH ALLEN, EVELINA FERNANDEZ, DOROTHY FORTENBERRY, JC LEE, ALEX LEWIN, KIM ROSENSTOCK, KEN ROHT ..... CTG Writers' Workshop Members

## EDUCATION AND COMMUNITY PARTNERSHIPS

LESLIE K. JOHNSON ..... Director of Education and Community Partnerships  
 KATHRYN MACKENZIE ..... Director of Department Operations  
 TRACI CHO KWON ..... Director of Arts Education Initiatives  
 CAMILLE SCHENKKAN ..... Program Manager, Next Generation Initiatives  
 JESUS REYES ..... Program Manager, Community Partnerships  
 KATRINA FRYE ..... Program Associate  
 MELISSA HERNANDEZ ..... Program Associate  
 ROSEMARY MARSTON-HIGDON ..... Program Associate  
 KELLY MUCHNICK ..... Communications Coordinator  
 SHANNON WINSTON ..... Department Coordinator  
 DEBRA PIVER ..... Resident Teaching Artist

## MANAGEMENT AND ADMINISTRATION

NAUSICA STERGIOU ..... General Manager (Mark Taper Forum, Kirk Douglas Theatre)  
 JEFFREY UPAH ..... General Manager (Ahmanson Theatre)  
 SUZANNE HEE MAYBERRY ..... Assistant General Manager (Mark Taper Forum)  
 KATIE BRUNER SOFF ..... Assistant General Manager (Kirk Douglas Theatre, NPP)  
 ALANA BEIDELMAN ..... Executive Assistant to the Artistic Director  
 TIFFANY MOON ..... General Management Associate

ERIC SIMS ..... Director of Theatre Operations (Kirk Douglas Theatre)  
 TOM BURMESTER ..... Audience Experience Design/Front of House Mgr (Kirk Douglas Theatre)  
 LAUREN BAXA ..... Assistant Performance Manager (Kirk Douglas Theatre)  
 MAX OKEN ..... Facility Assistant (Kirk Douglas Theatre)  
 SONDR A MAYER ..... Concessions Manager (Kirk Douglas Theatre)

## PRODUCTION

DAWN HOLISKI ..... Production Department Operations Director  
 CHRISTY WEIKEL ..... Production Manager (Kirk Douglas Theatre)  
 KATE COLTUN ..... Assistant Production Manager (Kirk Douglas Theatre)  
 RICHARD PETERSON ..... Master Electrician (Kirk Douglas Theatre)  
 AARON STAUBACH ..... Light Board Programmer/Operator (Kirk Douglas Theatre)  
 ADAM PHALEN ..... Head Audio (Kirk Douglas Theatre)  
 VICTOR COBOS ..... Stage Supervisor (Kirk Douglas Theatre)  
 CAMBRIA CHICHI ..... Wardrobe Supervisor (Kirk Douglas Theatre)

JOE HAMLIN ..... Technical Director/Ahmanson Production Manager  
 CHAD SMITH ..... Associate Technical Director  
 SAM CRAVEN-GRIFFITHS ..... Associate Technical Director

ANDREW THIELS ..... Prop Manager  
 MERRIANNE NEDREBERG ..... Associate Prop Manager  
 SARAH KRAININ ..... Prop Associate  
 CANDICE CAIN ..... Costume Director  
 BRENT M. BRUIN ..... Costume Workroom Supervisor  
 MADDIE KELLER ..... Costume Generalist  
 WHITNEY OPPENHEIMER ..... Shop Assistant  
 SWANTJE TUOHINO ..... Tailor  
 ELIZABETH LEONARD ..... Production Operations Manager  
 JULIO A. CUELLAR ..... Driver/Custodian  
 EUGENE A. MONTEIRO II, BRIAN SLATEN ..... Drivers  
 JENNIFER ACHTERBERG ..... Production Administrator

SHAWN ANDERSON ..... Master Carpenter (Ahmanson Theatre)  
 ANDREW W. ARNOLD ..... Flyman (Ahmanson Theatre)  
 STAN STEELMON ..... Master Propertyman (Ahmanson Theatre)  
 JIM BERGER ..... Master Electrician (Ahmanson Theatre)  
 ROBERT SMITH ..... Master Soundman (Ahmanson Theatre)  
 MICHAEL GARDNER ..... Wardrobe Supervisor (Ahmanson Theatre)  
 PATRICE MIRANDA ..... Hair and Make-up Supervisor (Ahmanson Theatre)  
 CHRISTINE L. COX ..... House Manager (Ahmanson Theatre)

JONATHAN BARLOW LEE ..... Production Manager (Mark Taper Forum)  
 EMMET KAISER ..... Master Carpenter (Mark Taper Forum)  
 ROBERT RUBY ..... Master Propertyman (Mark Taper Forum)  
 WILLIAM MORNER ..... Master Electrician (Mark Taper Forum)  
 BONES MALONE ..... Master Soundman (Mark Taper Forum)  
 DENNIS SEETOO ..... Wardrobe Supervisor (Mark Taper Forum)  
 RICK GEYER ..... Hair & Make-up Supervisor (Mark Taper Forum)  
 LINDA WALKER ..... House Manager (Mark Taper Forum)

## FINANCE, INFORMATION SYSTEMS AND HUMAN RESOURCES

MICHAEL F. THOMPSON ..... Chief Financial Officer  
 MELODY MATTOS ..... Controller  
 JANIS BOWBEER ..... Assistant Controller  
 XOCBITL RAMIREZ ..... Accounts Payable Coordinator  
 FELICISIMA LAPID ..... Accounts Payable Specialist  
 DANNY LAMPSON ..... Senior Staff Accountant  
 ALEGRIA SENA ..... Staff Accountant  
 YUEN KI "ANNIE" LAW ..... Payroll Manager  
 AMEETA SHARMA ..... Payroll Specialist

DAVE ALTON ..... Chief Information Officer  
 STAN GRUSHESKY ..... Director of Information Systems  
 SEAN PINTO ..... Database and Web Manager  
 MANDY RATLIFF ..... DBA, Tessitura Administrator  
 JARED WATANABE ..... Information Systems Analyst

JODY HORWITZ ..... Director of Human Resources  
 MADRIO FLEEK ..... Senior Human Resources Generalist  
 SINGER LEWAK, LLP ..... Auditor  
 MICHAEL C. DONALDSON, LISA A. CALLIF ..... Legal Counsel  
 GIBSON, DUNN & CRUTCHER ..... Legal Counsel

## DEVELOPMENT

YVONNE CARLSON BELL ..... Director of Development  
 PATRICK OWEN ..... Deputy Director of Development  
 NATALIE BERGESON ..... Director of Donor Contributions  
 JEAN KLING ..... Director of Institutional Support  
 LIZ LIN ..... Director of Corporate Relations and Communications  
 CHARITY WU ..... Director of Individual Giving  
 BECKY BIRDSONG ..... Major Gifts Officer  
 RYAN HONEY ..... Associate Director of Special Initiatives  
 ERIC BROWN ..... Communications Manager  
 KATY HILTON ..... Grants Manager  
 MANDI OR ..... Special Events Manager  
 JENNIFER CHAN ..... Special Events Associate  
 JUSTIN FOO ..... Donor Contributions Associate  
 SARAH HARBURG-PETRICH ..... Development Assistant  
 DONALD JOLLY ..... Donor Relations Associate for the Inner Circle  
 JESSICA NASH ..... Donor Contributions Supervisor  
 KIM OKAMURA ..... Institutional Giving Associate  
 MARIA PAREDES ..... Donor Relations Associate  
 ALLAIN ROCHEL ..... Development Assistant  
 ERIC SEPPALA ..... Executive Assistant to the Development Director  
 ERIN SCHLABACH ..... Major Gifts Coordinator  
 JESSICA THORSON ..... Corporate Relations Coordinator

AL BERMAN, ERIN BUTLER, ELIZABETH DELLORUSSO, DAVID GARVER, TONY LEWELLEN, HOLLY RAMOS, NICOLE SCIPIONE, LENA THOMAS, PAUL VITAGLIANO, BILL WALTON ..... Donor Advisors  
 ADAM BURCH, KARLA GALVEZ ..... Donor Services Associates  
 ANNE BRUNER, MURRAY E. HELTZER, MARCI MILLER, JULIE NADAL ..... Development Volunteers

## MARKETING AND COMMUNICATIONS

KORY P. KELLY ..... Director of Marketing and Communications

NANCY HEREFORD ..... Media and Communications Director  
 PHYLLIS MOBERLY ..... Media and Communications Associate  
 JASON MARTIN ..... Media and Communications Associate  
 CHELSEY ROSETTER ..... Media and Communications Coordinator

NISHITA DOSHI ..... Art Director  
 IRENE KANESHIRO ..... Senior Design Manager  
 HARUKA HAYAKAWA ..... Graphic Designer  
 JAVIER VASQUEZ ..... Graphic Designer  
 LOYDA GUADAMUZ ..... Temporary Graphic Designer

CODY LASSEN ..... Marketing Director  
 ANDREW DARCEY ..... Advertising Manager  
 KAREN VOCK ..... Marketing Manager  
 JEWEL MOORE ..... Marketing Coordinator

JAMES SIMS ..... Content Strategy Director  
 ROSE POIRIER ..... Webmaster

CRAIG SCHWARTZ ..... Production Photographer  
 LARRY DEAN HARRIS ..... Copywriter  
 CINEVATIVE/MARK CIGLAR ..... Production Video  
 ALLIED LIVE ..... Advertising Agency  
 LAURA MATALON, SHANNON WILLET, KELLY ESTRELLA

## TICKET SALES AND SERVICES

SHAWN ROBERTSON ..... Ticket Sales Director  
 SKYPP CABANAS ..... Ticket Operations Coordinator  
 SANDY CZUBIAK ..... Audience and Subscriber Services Manager  
 JENNIFER BAKER, CHERYL HAWKER, RICHARD RAGSDALE ..... Audience Services Supervisors  
 ALICE CHEN ..... Audience Services Asst. Supervisor  
 SAM AARON, DEBORAH REED ..... Audience Services Sales Associates

JEREMIE ARENCIBIA, VICKI BERNDT, CARLOS D. CHAVEZ, JR., PETER COLBURN, DONALD CRANDALL, MICHAEL ESPINOZA, GARY HOLLAND, EILEEN PEREZ, JUSTINE PEREZ, LEX SAVKO, DANNY SCHMITZ ..... Audience Services Representatives

DANUTA SIEMAK ..... Subscriber Services Supervisor  
 CHRISTINA GUTIERREZ ..... Subscriber Services Asst. Supervisor  
 LIGIA PISTE, CELIA RIVAS ..... Subscriber Services Senior Representatives  
 IRENE CHUANG, PETER STALOCH ..... Subscriber Services Representatives

SARAH K. GONTA ..... Box Office Treasurer  
 KISHISA ROSS, GISELE FRAZEUR ..... Assistant Treasurers  
 ANGELICA CARBAJAL, MICHAEL KEMPISTY, LEROY PAWLOWSKI, MICHAEL SALTZMAN, CRIS SPACCA ..... Box Office Staff  
 MICHAEL ZOLDESSY ..... Account Sales Manager  
 EILEEN ROBERTS ..... Account Sales Associate  
 KERRY KORF ..... Priority Services Director  
 SUSAN F. TULLER ..... Priority Services Operations Manager  
 JAY BURNS ..... Priority Services Sales Manager  
 PAUL CUEN ..... Priority Services Manager  
 CANDICE WALTERS ..... Priority Services Assistant Supervisor

CAROLE BAXTER, CELI BOWLING, RACHEL BRINK, ZOE CANNER, MAGGIE DODD, NIC DRESSEL, SOFIJA DUTCHER, MARC "BRYON" DROTMAN, SAMANTHA ELSE, LOU GEORGE, PATRICK HANNA, LISA KESSLER, SHEP KOSTER, ALI LAFFER, MATT PELFREY, DONALD RIZZO, KEN SALLEY, KRISTEN SCHRASS, BOBBI LYNNE SCOTT, ANDREW SEVERYN, MICHAEL SMITH, QUINN SULLIVAN, BINOY THOMAS, DIANE WARD, JIM WATERMAN ..... Representatives

## INTERNS

NICOLE ARCA, JIM BLACKETT, KASSANDRA CELIS, HILARY FITZSIMMONS, MONIKA GOEBEL, JOHN JOHNSON, KATE JOPSON, EMILY MISCHEL, ERIC MITCHELL, NICHOLAS NAVARRO, CODY PHAPOL, PAIGE PHELAN, MATTHEW QUINLAN, JUAN SILVERIO, KAT WEPLER, DANIELE WIEDER

Center Theatre Group would like to thank its exceptional staff for their ongoing commitment, dedication and extraordinary efforts.