

Mark Taper Forum 46th Season 2013

FIRST SEASON PRODUCTION

Tribes

by Nina Raine
Directed by David Cromer
February 27 – April 14, 2013

SECOND SEASON PRODUCTION

August Wilson's

Joe Turner's Come and Gone

Directed by Phylicia Rashad
April 24 – June 9, 2013

THIRD SEASON PRODUCTION

A Parallelogram

by Bruce Norris
Directed by Anna D. Shapiro
July 10 – August 18, 2013

FOURTH SEASON PRODUCTION

What the Butler Saw

by Joe Orton
Directed by John Tillinger
September 25 – November 3, 2013

FIFTH SEASON PRODUCTION

The Steward of Christendom

by Sebastian Barry
Directed by Steven Robman
November 26, 2013 – January 5, 2014



 Center
Theatre
Group
L.A.'s Theatre Company

CENTER THEATRE GROUP BOARD OF DIRECTORS
2012/2013 OFFICERS

HONORARY CHAIRMAN
Lew R. Wasserman†

CHAIRMAN
Martin Massman

PRESIDENT
William H. Ahmanson

VICE PRESIDENT
Ava Fries

SECRETARY
Amy R. Forbes

ASSISTANT SECRETARY
Susan Grode

TREASURER
Dr. Steven Nagelberg

BOARD MEMBERS
Dean V. Ambrose
Pamela Beck
Norris J. Bishton, Jr.
Howard Bragman
Diana Buckhantz
Dannielle Campos Ramirez
Joseph C. Carieri
Marcy Carsey
Nancy de Brier
Cástulo de la Rocha
Vin Di Bona
Dante Di Loreto
Frances Flanagan
Barbara Fodor
Eric R. Garen
Kiki Ramos Gindler
Patricia Glaser
Brindell Roberts Gottlieb
Tim Hanlon
Stephen F. Hinchliffe, Jr.
Darell L. Krasnoff
Lucy M. Labruzzo
Jennifer Altfeld Landau
Carol Mancino
Antonio Manning
Dale S. Miller
Walter Mirisch
Jo Muse
Edward B. Nahmias
Diane Neubauer
Edward L. Rada
Bill Resnick
Michael Ritchie
Laura Rosenwald
Bruce L. Ross
Dan Sernett
Cheryl A. Shepherd
Eva Stern
Sue Tsao

EMERITUS
Harold Applebaum
Ronald J. Arnault
Judith Beckmen
Gordon Davidson
Phyllis Hennigan
Leonard Hirshan
Richard Kagan
Nancy Olson Livingston
O. Kit Lokey
Diane Morton

PAST PRESIDENTS
Lew R. Wasserman†
Marshall Berges†
Armand S. Deutsch†
Walter Mirisch
Henry C. Rogers†
Richard E. Sherwood†
J. David Haft†
Lawrence J. Ramer†
Stephen F. Hinchliffe, Jr.
Phyllis Hennigan
Richard Kagan
Martin Massman

†Deceased

From the Artistic Director

August is arguably the greatest playwright this country has ever produced, and his cycle of plays chronicling the African-American experience through each decade of the 20th century is inarguably a masterwork.

His words were still resonating in this theatre when I took the reins in 2005 and it seemed almost sacrilege to replace them with any others. However, I am a firm believer that once the words are spoken in a theatre they are captured and contained forever. They continue to rest in the air as time passes, always there to be remembered and cherished.

The words that had filled the Taper just before I took over were from *Radio Golf*. Set in 1997, *Radio Golf* was the tenth and final play of the Century Cycle and Center Theatre Group was part of the world premiere production before the play made its way to Broadway.

August passed away a few weeks after *Radio Golf* concluded its run at the Taper and shortly before it opened on Broadway. It seemed like the end of an amazing artistic endeavor, but as is often the case with great artists, his work lives on, not only here at CTG but also across the country.

Just a few weeks ago 10 local high school students gathered here at the Taper and breathed life into August's monologues at the Regional Finals of the annual August Wilson Monologue Competition, which has quickly become one of my favorite nights of the year.

Now we are presenting *Joe Turner's Come and Gone ...* the eighth CTG production of his 10-play cycle ... and it will not be our last. Phylicia Rashad, who was the first actor to embody one of August's most iconic characters, Aunt Ester in *Gem of the Ocean*, is the director of tonight's play and brings her deep experience with August, his work ... and his words to this venture.

This production rehearsed in the very same rehearsal room where August honed the dialogue of so many of his plays. You are sitting in the theatre where he heard audiences react nightly to the tweaks he'd made in that rehearsal room. The plaza outside is where August would escape from tech rehearsals to soak in the sun and sounds of Los Angeles.

This theatre is deeply connected and committed to the legacy of August Wilson and it is a legacy that continues to grow. Tonight we begin another act and I am proud to be a part of it. ■



Michael Ritchie



Center Theatre Group

L.A.'s Theatre Company

Ahmanson Theatre

Mark Taper Forum

Kirk Douglas Theatre

Michael Ritchie, ARTISTIC DIRECTOR **Edward L. Rada**, MANAGING DIRECTOR

Gordon Davidson, FOUNDING ARTISTIC DIRECTOR

Presents

AUGUST WILSON'S

**JOE TURNER'S
COME AND GONE**

with

SKYE BARRETT

GABRIEL BROWN

KEITH DAVID

JANUARY LAVOY

VIVIAN NIXON

NATHANIEL JAMES POTVIN

RAYNOR SCHEINE

ERICA TAZEL

JOHN DOUGLAS THOMPSON

GLYNN TURMAN

LILLIAS WHITE

Scenic Design

JOHN IACOVELLI

Costume Design

KAREN PERRY

Lighting Design

ALLEN LEE HUGHES

Sound Design

CRICKET S. MYERS

Wigs and Hair Design

CAROL F. DORAN

Original Music

KATHRYN BOSTIC

Associate Artistic Director

KELLEY KIRKPATRICK

Production Stage Manager

DAVID BLACKWELL

Directed by

PHYLICIA RASHAD

Originally produced by Yale Repertory Theatre, Lloyd Richards, Artistic Director.

Joe Turner's Come and Gone is presented by special arrangement with Samuel French, Inc.

April 24 – June 9, 2013

Mark Taper Forum

CAST

(in order of appearance)

Seth Holly **KEITH DAVID**
Bertha Holly **LILLIAS WHITE**
Bynum Walker **GLYNN TURMAN**
Rutherford Selig **RAYNOR SCHEINE**
Jeremy Furlow **GABRIEL BROWN**
Herald Loomis **JOHN DOUGLAS THOMPSON**
Zonia Loomis **SKYE BARRETT**
Mattie Campbell **JANUARY LAVOY**
Reuben Mercer **NATHANIEL JAMES POTVIN**
Molly Cunningham **VIVIAN NIXON**
Martha Pentecost **ERICA TAZEL**

UNDERSTUDIES

Understudies never substitute for the listed players unless a specific posting or announcement is made at the time of the performance.

For Jeremy/Herald – BEN CAIN
For Bynum/Seth – GREGG DANIEL
For Reuben – JORDAN JONES
For Rutherford – MATT MCKENZIE
For Mattie/Molly/Martha – NIJA OKORO
For Zonia – KIARAH POLLAS
For Bertha – ELAYN J. TAYLOR

TIME/PLACE

August 1911. A boardinghouse in Pittsburgh.

STAGE MANAGER
MICHELLE BLAIR

There will be one 15-minute intermission.



Please turn off all electronic devices such as cellular phones, PDAs, beepers and watch alarms. The use of any recording device, either audio or video, and the taking of photographs, with or without flash, is strictly prohibited.

Latecomers will be seated at the discretion of the management. For patrons with disabilities: wheelchair seating is available in a variety of theatre locations. When ordering your tickets, please indicate any special needs. For our hearing-impaired guests, the theatre is equipped with listening devices; please contact an usher for assistance.

August Speaks Through A New Generation



Southern California regional finalists in the 2013 August Wilson Monologue Competition at the Taper, hosted by CTG. PHOTO BY RYAN MILLER.

On March 4, 2013, 10 local high school students experienced a once-in-a-lifetime opportunity

— the chance to perform monologues written by the great August Wilson on the Mark Taper Forum stage, the same stage where many of Wilson's plays have been developed and performed.

These students were the Southern California regional finalists in the national August Wilson Monologue competition (AWMC). As a part of the program, they had the opportunity to work closely with and be mentored by professional actors and casting directors as they prepared to compete.

Celebrity judges including *Joe Turner's Come and Gone* actor Keith David and original *Dreamgirls* cast member Loretta Devine selected the top three finalists who were awarded scholarships, an all-expenses paid trip to New York City, and the opportunity to compete in the AWMC national finals against students from all over the country at the August Wilson Theatre on Broadway this May. In 2012, as a part of Center Theatre Group's and Southern California's inaugural year in the competition, one of the regional finalists, Tyler Edwards, placed third nationally.

This is also the second year of CTG's unique August Wilson In-School Residency Program, which involves semester-long residencies at four local schools. Each residency partners a CTG teaching artist with a ninth grade English teacher and allows for students to explore all 10 plays of Wilson's Century Cycle.

CTG's participation in the AWMC and in-school residencies are programs of the Education and Community Partnerships Department, which runs one of the most active theatre education programs in the country. The department is dedicated to the development of artists, educators and young people's skills and creativity through the exploration of theatre, its literature, art and imagination. ■

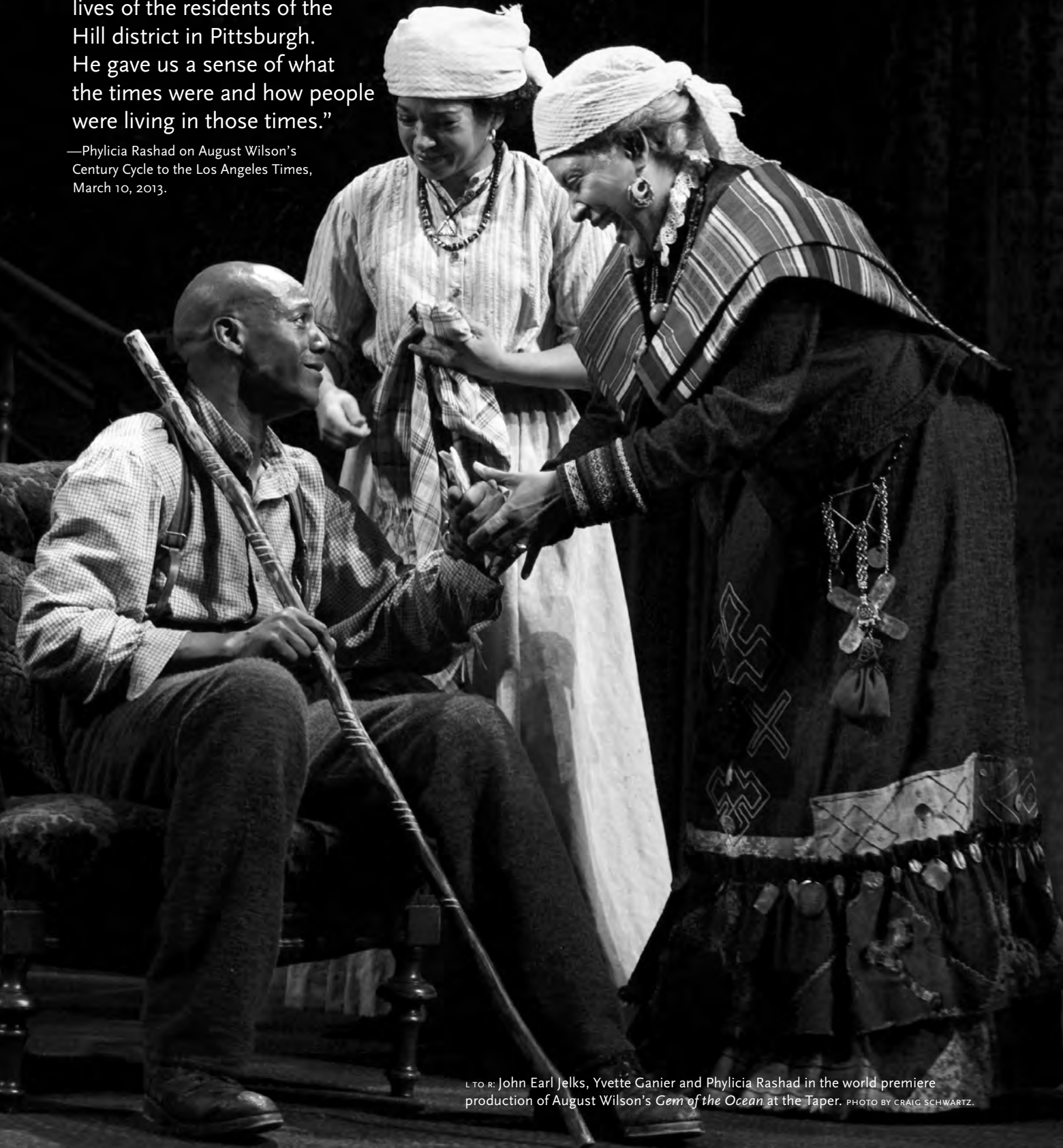


First place finalist Pablo Lopez. PHOTO BY RYAN MILLER.

A Dream Not Deferred:

“He was giving us a look at America in the 20th century through the lives of the residents of the Hill district in Pittsburgh. He gave us a sense of what the times were and how people were living in those times.”

—Phylicia Rashad on August Wilson’s *Century Cycle* to the *Los Angeles Times*, March 10, 2013.



L TO R: John Earl Jelks, Yvette Ganier and Phylicia Rashad in the world premiere production of August Wilson’s *Gem of the Ocean* at the Taper. PHOTO BY CRAIG SCHWARTZ.

August Wilson's Century Cycle

AUGUST WILSON is best known for his Century Cycle that consists of 10 plays, nine of which are set in the Hill District, an African-American neighborhood in Pittsburgh. Each play is set in a different decade of the 20th century, although they are not necessarily connected as one chronological story.

Center Theatre Group has presented eight August Wilson plays — *Gem of the Ocean*, *The Piano Lesson*, *Seven Guitars*, *Two Trains Running*, *Jitney*, *King Hedley II*, *Radio Golf*, and now *Joe Turner's Come and Gone*. ■

Other Plays by August Wilson
Recycle (written in 1973)
The Homecoming (written in 1976)
Black Bart and the Sacred Hills (written in 1977)
The Coldest Day of the Year (written in 1971)
Fullerton Street (written in 1980)
The Janitor (published in 1985)
How I Learned What I Learned (premiered in 2003)

AUGUST WILSON'S CENTURY CYCLE

SET IN

- 1900S : *GEM OF THE OCEAN* (premiered in 2003)
- 1910S : *JOE TURNER'S COME AND GONE* (premiered in 1986)
- 1920S : *MA RAINEY'S BLACK BOTTOM* (premiered in 1984)
- 1930S : *THE PIANO LESSON* (premiered in 1987)
- 1940S : *SEVEN GUITARS* (premiered in 1995)
- 1950S : *FENCES* (premiered in 1985)
- 1960S : *TWO TRAINS RUNNING* (premiered in 1990)
- 1970S : *JITNEY* (premiered in 1982)
- 1980S : *KING HEDLEY II* (premiered in 1999)
- 1990S : *RADIO GOLF* (premiered in 2005)



L TO R: James A. Williams, Rocky Carroll and John Earl Jenks in the world premiere production of August Wilson's *Radio Golf* at the Taper. PHOTO BY CRAIG SCHWARTZ.

Who's Who



SKYE BARRETT (*Zonia Loomis*). At only 10 years old, Skye Barrett has already worked as a professional actress for several years. Her interest in acting arose when she was only three years old. Over the span of seven years she has built an impressive resume with credits including top rated shows such as *Law & Order*, *ER* and *House M.D.* She is a strong dramatic actress but also enjoys doing comedic roles. She especially enjoyed portraying the Rasta Babysitter in the Dreamworks comedy *Opposite Day* with actors Ariel Winter and Rico Rodriguez of *Modern Family*. She is represented by Abrams Artist Agency for commercials and Jaime Ferrar Agency for theatrical. Skye is very excited to transition into a professional stage actress and perform at the Mark Taper Forum.



GABRIEL BROWN (*Jeremy Furlow*). Center Theatre Group debut. Regional: *A Raisin in the Sun* (Westport Country Playhouse), *Kaufman's Barbershop* and *Kaufman's Journey* (Shakespeare & Company), *iDream* (Premiere Stages). A recent B.F.A. graduate from the University of North Carolina School of the Arts.



KEITH DAVID (*Seth Holly*). Broadway: *Hot Feet*, *Seven Guitars*, *Hedda Gabler*, *Jelly's Last Jam* (Tony Award nomination), *Macbeth*, *Romeo and Juliet*, *Lady From Dubuque*. Off-Broadway: *A Midsummer Night's Dream*, *Othello*, *Kit Marlowe*, *The Winter's Tale*, *Boesman and Lena*, *Titus Andronicus*, *Ceremonies in Dark Old Men*, *La Bohème*, *Waiting for Godot*, *The Pirates of Penzance*. Film (selected): *Cloud Atlas*, *The Princess and the Frog*, *Coraline*, *Crash*, *The Chronicles of Riddick*, *Barbershop*, *Requiem for a Dream*, *Pitch Black*, *There's Something About Mary*, *Armageddon*, *Dead Presidents*, *Bird*, *Platoon*, *The Thing*. Television (selected): *Belle's*,

The Cape, *Gargoyles* (Emmy nomination), *ER*, *Law & Order*, *7th Heaven*, *CSI: Crime Scene Investigation*, *The Tiger Woods Story* (Emmy nomination). Narrations: Ken Burns' *The War* (Emmy Award), *Unforgivable Blackness: The Rise and Fall of Jack Johnson* (Emmy Award), *Jazz* (Emmy nomination).



JANUARY LAVOY (*Mattie Campbell*). Broadway: *Enron*. Off-Broadway: *Two Trains Running* and *Home* (Signature Theatre), *Wings* (Second Stage), *Coraline* (MCC). Regional: *Good People* and *The Piano Lesson* (Pittsburgh Public), *What I Learned in Paris* (Alliance), *A Streetcar Named Desire*, *Lobby Hero*, *Merchant of Venice* (Denver Center), *Measure for Measure* (Shakespeare Theatre of New Jersey) and world premieres at City Theatre, Wilma Theatre and CATF. 2010 alumna of the Sundance Theatre Lab. Film: *War of the Worlds*, *High Ground*. Television: *Law & Order* (classic, CI and SVU), *3 lbs.*, *Guiding Light*, *All My Children* and Noelle Ortiz-Stubbs on *One Life to Live*. Voiceover: many national campaigns including Revlon, Dannon and Obama for America, and dozens of audiobooks. Proud member of AEA and SAG-AFTRA. She is married to her favorite actor, Mat Hostetler. www.januarylavoy.com



VIVIAN NIXON (*Molly Cunningham*). Broadway: *Women on The Verge of a Nervous Breakdown* (original cast, understudy Candela/Paulina), *Memphis* (original cast, assistant dance captain), *Hot Feet* (original cast, Kalimba). Regional/Tours: *Twist* (Josephine Baker), *West Side Story* (Anita), *Brothers of the Knight* (Sunday/re-staged), *Bayou Legend* (Sara), Alvin Ailey II. TV: *Smash* (Season one regular), *Glee* (Andrea), *Weeds*, *Eli Stone*, *Everybody Hates Chris* (co-star), *That's So Raven*. Film: *500 Days of Summer*, *Louis*, *Bolden*. Ms. Nixon is thrilled to be making her debut at the Mark Taper Forum alongside an amazing cast and creative

team. Thank you CTG and Phylicia Rashad, it's an honor!! Dedicated to Mom, Dad, Thumpie, Biebie, Mama, Papa, A. Reese and Devo. I love you guys!!



NATHANIEL JAMES POTVIN (*Reuben Mercer*). Film: *Twist of Faith* (Asher), *Palms* (Solomon) and *Different* (Brandon). Television: *The Middle* (co-star), *Belle's* (guest star) and *Everyday People* (series regular). L.A.

Theatre: *Camera Ready Kids Showcase* (Dance Dimensions Studio), *The Devil in Sherman Marsh* (CSUN), *J.U.I.C.E. Dance Festival* (Ford Theatre), *Hip Hop Competition Crew* (Southern California Regional - First Place Best Overall).



RAYNOR SCHEINE (*Rutherford Selig*). A veteran of over 100 plays, 50 feature films and much television, he originated the role of Selig at Yale Repertory and moved with it to Broadway. Most recently he was seen as

Representative "Beanpole" Burton in Steven Spielberg's *Lincoln*. Raynor would like to thank Jan for her love and support of both him and August Wilson. In 1976, he was licensed by the Department of Agriculture to grade, sample and inspect peanuts.



ERICA TAZEL (*Martha Pentecost*). Off-Broadway: *Juvenilia* (Playwrights Horizons), *Cymbeline* (Royal Shakespeare Company/Theatre for a New Audience) and *A Winter's Tale* (New York Shakespeare Festival).

Regional: *Macbeth* (Florence, Italy), *Tranced* (Laguna Playhouse), *The Exonerated* and *Four* (Hartford TheaterWorks), *Much Ado About Nothing* (Old Globe Theatre) and *Crumbs From the Table of Joy* (Dallas Theater Center). Los Angeles: *I Have Before Me a Remarkable Document Given To Me by a Young Lady from Rwanda* (The Colony Theatre, NAACP Theatre

Award: Best Lead Female). TV: Currently stars as Deputy U.S. Marshal Rachel Brooks on the FX drama *Justified*, and appeared on *The Office*, *ER*, *Without a Trace*, *Jericho*, *Bones*, *Law & Order*, *Law & Order: SVU*, *Firefly*, *Third Watch* and *Sex and the City*. In loving memory of Professor Glenda Dickerson.



JOHN DOUGLAS THOMPSON (*Herald Loomis*). Broadway: LeBret in *Cyrano* with Kevin Kline and Jennifer Garner and *Julius Caesar* with Denzel Washington. Off-Broadway: *Othello* at TFANA (Obie and

Lucille Lortel Awards), Brutus Jones in *The Emperor Jones* (Callaway Award, Lucille Lortel, Drama League and Drama Desk nominations), *Macbeth* at TFANA, Genady in *The Forest* at CSC with Dianne Wiest, Kent in *King Lear* with Sam Waterson (Public Theater). Regional: Louis Armstrong in *Satchmo at the Waldorf* at Long Wharf Theater/Shakespeare & Company, Joe Mott in *The Iceman Cometh* at Goodman Theatre with Nathan Lane and Brian Dennehy, Antony in *Anthony & Cleopatra* at Hartford Stage with Kate Mulgrew, Richard in *Richard III* at Shakespeare & Company, Judge Brack in *Hedda Gabler* at NYTW, Luscious Jenkins in *Jesus Hopped the 'A' Train* (Wilma Theater, Barrymore Award). Film: *The Bourne Legacy*, *Glass Chin*, *Michael Clayton*, *Malcolm X*. TV: *Law & Order*, *Law & Order: SVU*, *Conviction*.



GLYNN TURMAN (*Bynum Walker*). Mr. Turman's more than five decades of work includes Broadway – *A Raisin in the Sun* (1959), *What the Wine Sellers Buy* (Mark Taper Forum, Lincoln Center); Off-Broadway – *Do Lord*

Remember Me (American Place Theatre); National Tours — *Movin' Man* (Autobiographical) and *I'm Not Rappaport*; Regional – Athol Fugard's *My Children! My Africa!* and *Good Boys* (Guthrie). Other L.A.: August Wilson's *Two Trains Running* (Ovation Award; Ebony Repertory Theatre), *Eyes of the American* (Drama-Logue

Award, LATC) and *Deadwood Dick* (Image Award, Inner City Cultural Center). Film: *John Dies at the End*, *Super 8*, *Burlesque*, *Takers*, *Sahara*, *Men of Honor*, *Gremlins* and *Cooley High*. TV: *House of Lies*, *In Treatment* (Emmy Award), *A Different World*, *The Wire* (Image Award nominee), *NCIS: LA*, *Revolution*, *Scrubs*, *Buffalo Soldiers*, *Dynasty*, *The Minstrel Man* and *Payton Place*. Recipient of the NAACP Lifetime Achievement and NBTf Sidney Poitier Lifelong Achievement Awards.



LILLIAS WHITE (*Bertha Holly*) hails from Brooklyn, New York. Lillias is no stranger to the Broadway stage where her credits include *Barnum* (Joice Heth), *Dreamgirls* (Effie White), *Cats* (Grisabella), *Chicago* (Mama

Morton), *Once On This Island* (Asaka), *The Life* (Sonia; Outer Critics Circle Award, Drama Desk Award, Friends of New York Theatre Award, Tony Award: Best Featured Actress in a Musical), *Fela!* (Fumilayo Anikulapo Kuti, Tony nomination). Off-Broadway: *Crowns* (Second Stage, Audelco Award), *Romance in Hard Times* (Public Theater, Obie Award), *The Best is Yet to Come* (59E59), *Nativity* (Riverside Church), *Gem of the Ocean* (Aunt Ester at the Rubicon Theatre Company), *Princess and the Black-Eyed Pea* (AMAS). Film: *Pieces of April*, *Game Six*, Disney's *Hercules*. TV: *Sesame Street* (Emmy Award), *Law & Order*, PBS *Great Performances* production of *South Pacific* (Bloody Mary). She has performed at Jazz@Lincoln Center, Joe's Pub, Feinsteins, The Apollo Theatre, The Venetian Room and various other venues. Last summer she premiered a one woman show called *Big Maybelle* at the Bay Street Theatre in Sag Harbor.



BEN CAIN (*Understudy for Jeremy/Herald*) is a graduate of Carnegie Mellon University. Television and Film: *Law & Order*, *New York Undercover*, *Homicide*, *Dogma*, the Emmy-winning made for TV movie *The*

Temptations, *Numb3rs*, *CSI: Miami*, *Lost*, *Chuck* and *Franklin and Bash*. Commercials: Coors Light, Bell South, Kmart and Sears. An Ovation Award-winner for *The Exonerated*. Off-Broadway at The Public Theater and in London at Riverside Studio. He was honored by the Pittsburgh Post Gazette for his roles in August Wilson's *Joe Turner's Come and Gone* (2005), *Seven Guitars* (2006) and *King Hedley II* (2011) as one of the top performers of that year. www.bencain.net



GREGG DANIEL (*Understudy for Bynum/Seth*). New York: *A Soldier's Play* (Negro Ensemble Company), *Gogol*, *Back County Crimes* (Playwrights Horizons). Regional: *Master Harold ...* (Cape May Stage, Portland

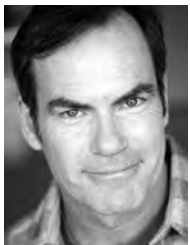
Stage, Actors Theatre of Louisville, International City Theatre), *Mother Courage*, *Julius Caesar*, *Cyrano de Bergerac* (Milwaukee Repertory Theatre), *Peer Gynt* (Hartford Stage Company), *Spell#7*, *Mojo and the Sayso* (Crossroads Theatre Company). Los Angeles: *Jitney* (South Coast Repertory, Pasadena Playhouse), *Fences* (South Coast Repertory), *Joe Turner* (Fountain Theatre), *A Christmas Carol* (South Coast Repertory, Center Stage), *Two Gentleman of Verona*, *A Midsummer Night's Dream*, *The Taming of the Shrew*, (Shakespeare Center L.A.), *Much Ado About Nothing* (Shakespeare Santa Barbara). Television: *True Blood*, *Nick Kroll Show*, *Castle*, *Parenthood*, *Weeds*, *Desperate Housewives*, *Sarah Silverman*, *Harry's Law*, *NCIS*. Film: *Hancock*, *Spiderman 3*, *Evan Almighty*, *Hollywood Homicide*, *Gun Shy*.



JORDAN JONES

(*Understudy for Reuben*) is a 13-year-old Los Angeles-based actor, singer and songwriter. One of three children from a tight-knit family, Jordan is an honor student and has a diverse

schedule of extracurricular activities. His favorites are basketball and Tae Kwon Do, which he participates in with his brothers, Justin and Josh. He has a deep interest in and talent for product invention. Jordan has appeared on several television shows including the series of *Are You Smarter Than A 5th Grader?* He has recorded music professionally with legendary producers including Brian Wilson of The Beach Boys for *Carnie Wilson's A Mother's Gift: Lullabies from the Heart*. He has also recorded with his dad, Jamie Jones, Grammy Award-winning lead singer of the group All-4-One.



MATT MCKENZIE

(*Understudy for Rutherford*). Broadway: *Monday After the Miracle*. Regional: *Spokesong* (Old Globe, San Diego), *The Business of Murder* (Royal Poinciana, West Palm Beach, FL), *Richard III* (San

Francisco Shakespeare Festival), *The 36 Views* (Berkeley Rep). Center Theatre Group: *Closer* (Mark Taper Forum). Other L.A.: *Baby It's You* (Pasadena Playhouse), *Lions* (Pacific Resident Theatre). Film: *The Rookie*, *Gods and Monsters*. Television: *Mad Men*, *24*, *Veronica Mars*. Directing: *The Time of Your Life* and *Sweet Thursday* (Pacific Resident Theatre), *Sarah's War* (Hudson Theatre, Hollywood). AEA member, 31 years.



NIJA OKORO (*Understudy for Mattie/Molly/Martha*) is thrilled to be a part of such a wonderful ensemble. TV credits include *Southland*, *Monday Mornings*, *Medium*, *Hail Mary* and *ER*. Currently working on the independent

feature *Fachada*. Regional: Sundance Theatre Lab and the McCarter Theatre. She is a proud member of the arts outreach theatre company Shakespeare and Friends. Nija is a graduate LaGuardia H.S. of the Arts and the Juilliard School (Group 37).



KIARAH POLLAS

(*Understudy for Zonia*). Center Theatre Group (Mark Taper Forum): *Joe Turner's Come and Gone*. TV: *The Boondocks*. Los Angeles: IPOP (TV beauty commercial 1st Runner up Award, Actor of the Year 3rd Runner up award).



ELAYN J. TAYLOR

(*Understudy for Bertha*). A shortened list of theatrical credits includes, in Los Angeles, *Permanent Collection* (Kirk Douglas Theatre), *To Be Young*, *Gifted and Black*, *Indigo*

Blues, *Washington Square Moves*, *A Sunbeam and Fences* (Ovation nomination); in Houston, *Self Defense*, *Joe Turner's Come and Gone* and *Waltz of the Torreadors* (Alley Theatre), *A Raisin in the Sun*, *Louie and Ophelia*, *Jesus Christ Superstar* and *Treemonisha* (Theatre Under the Stars); and in Minneapolis, *Fences*, *Someplace Soft to Fall* (Penumbra Theatre). Film: A partial list includes *Something's Gotta Give*, *Humboldt County*, *Heaven's Fall*, *Lovely and Amazing*, *Rules of Engagement*. TV: *Grey's Anatomy*, *Southland*, *True Blood*, *Cold Case* and *Brothers and Sisters*, to name a few.



AUGUST WILSON

(Playwright – born April 27, 1945 – died October 2, 2005) authored *Gem of the Ocean*, *Joe Turner's Come and Gone*, *Ma Rainey's Black Bottom*, *The Piano Lesson*, *Seven Guitars*, *Fences*, *Two Trains*

Running, *Jitney*, *King Hedley II* and *Radio Golf*. These works explore the heritage and experience of African-Americans, decade-by-decade, over the course of the twentieth century. His plays have been produced at regional theatres across the country and all over the world, as well as on Broadway. In 2003, Mr. Wilson made his professional stage debut in his one-man show, *How I Learned What I Learned*. Mr. Wilson's works garnered many awards including Pulitzer Prizes for *Fences* (1987) and for *The Piano Lesson* (1990); a Tony Award for *Fences*; Great Britain's Olivier Award for *Jitney*; as well as eight New York Drama Critics Circle Awards for *Ma Rainey's Black Bottom*, *Fences*, *Joe Turner's Come and Gone*, *The Piano Lesson*, *Two Trains Running*, *Seven Guitars*, *Jitney* and *Radio Golf*. Additionally, the cast recording of *Ma Rainey's Black Bottom* received a 1985 Grammy Award, and Mr. Wilson received a 1995 Emmy Award nomination for his screenplay adaptation of *The Piano Lesson*. Mr. Wilson's early works included the one-act plays *The Janitor*, *Recycle*, *The Coldest Day of the Year*, *Malcolm X*, *The Homecoming* and the musical satire *Black Bart and the Sacred Hills*. Mr. Wilson received many fellowships and awards, including Rockefeller and Guggenheim Fellowships in Playwriting, the Whiting Writers Award, 2003 Heinz Award, was awarded a 1999 National Humanities Medal by the President of the United States, and received numerous honorary degrees from colleges and universities, as well as the only high school diploma ever issued by the Carnegie Library of Pittsburgh. He was an alumnus of New Dramatists, a member of the American Academy of Arts and Sciences, a 1995 inductee into the American Academy of Arts and Letters, and on October 16, 2005, Broadway renamed the theatre located at 245 West 52nd Street - The August Wilson Theatre. Additionally, Mr. Wilson was posthumously inducted into the Theater Hall of Fame in 2007. Mr. Wilson was born

and raised in the Hill District of Pittsburgh, Pennsylvania and lived in Seattle, Washington, at the time of his death. He is immediately survived by his two daughters, Sakina Ansari and Azula Carmen Wilson, and his wife, costume designer Constanza Romero.



PHYLICIA RASHAD

(Director). Ms. Rashad directed Lorraine Hansberry's *A Raisin in the Sun* at Ebony Repertory Theatre, Kirk Douglas Theatre and Westport Country Playhouse as well as

August Wilson's *Gem of the Ocean* at Seattle Repertory Theatre and Paul Oakley Stovall's *Immediate Family* at the Goodman Theatre. As an actress — Broadway: *August Osage County*, *Cat on a Hot Tin Roof*, *Cymbeline*, (Lincoln Center Theater), August Wilson's *Gem of the Ocean* (Tony nomination), *A Raisin in the Sun* (Tony and Drama Desk Awards), *Into the Woods*, *Dreamgirls*, *The Wiz*; Off-Broadway: *The Story*, *Helen*, *Everybody's Ruby*, *Blue*, *Bernarda Alba*; Regional: *Every Tongue Confess*, *Blues for an Alabama Sky*, *Medea*; Film: *Gods Behaving Badly*, *Good Deeds*, *For Colored Girls*, *Frankie and Alice*, *Just Wright*, *Once Upon a Time When We Were Colored*, *Loving Jezebel*, *The Visit*; Television: *A Raisin in the Sun* (NAACP Image Award, Emmy and SAG nominations), *The Old Settler*, *Free of Eden*, *The Cosby Show*, *Cosby*.



JOHN IACOVELLI (*Scenic Design*)

Emmy Award for *Peter Pan* starring Cathy Rigby (on A&E). Other Broadway: *The Twilight of the Gods*. National Tour: *Camelot*. Regional: over 300 productions — Geffen

Playhouse, South Coast Repertory, Pasadena Playhouse, Berkeley Rep, Magic, Oregon Shakespeare Festival, Syracuse Stage and Seattle Rep. Center Theatre Group: *Waiting for Godot* and *Temptation* at the Taper and *Largo Desolato*, *The Dream Coast* and *Making Noise Quietly* at the Taper, Too. Film: Production designer on *Ruby in Paradise* starring Ashley Judd in her film debut. Art director on *Honey*,

I Shrank the Kids. TV: *Beckett Directs Beckett: Endgame with The San Quentin Drama Workshop*, *The Old Settler* starring Phylicia Rashad and Debbie Allen, *The Gin Game* starring Mary Tyler Moore and Dick Van Dyke, *Babylon 5*, *Ed*, *Resurrection Blvd.*, *Lincoln Heights*. Awards: LADCC for Lifetime Achievement. Website portfolio: www.iacovelli.com.



KAREN PERRY (*Costume Design*). Theatre: *and Potatoes*, *The Piano Lesson*, *My Children! My Africa!* (Signature Theatre); *Trip to Bountiful* (Cincinnati Playhouse in the Park); *Two Trains Running* (Two Rivers Theatre); *Crowns*

The Musical, Regina Taylor's *Trinity River Trilogy* (Goodman Theatre); *Jitney* (TRTC/NJ); *August Wilson's Radio Golf* (IRT); *Blues for an Alabama Sky* (Pasadena Playhouse and L.H. Theatre); *A Time to Kill* (Arena); *The Fall of Heaven* (Cincinnati Playhouse); *The Brother/Sister Plays* (The Public and McCarter); *Things of Dry Hours* (NYTW); *Having Our Say* (McCarter); *Resurrection* (Arena). Karen has worked on seven of the plays in August Wilson's Century Cycle. Awards and Honors: Emmy nomination, Lucille Lortel nomination, CGG nomination and recipient of a 2012 NAACP Award, Santa Diego Circle Award, five Audelco Awards, Ira Alridge Award and NBTF Lifetime Awards.

ALLEN LEE HUGHES (*Lighting Design*).

Broadway: *Who's Afraid of Virginia Woolf?*, *Clybourne Park*, *Having Our Say*, *Mule Bone* and *Once on This Island* (Tony nomination), *K2* (Tony nomination, Outer Critics Circle Award, Maharam Award), *Strange Interlude* (Tony nomination), *Accidental Death of an Anarchist*, *Quilters*. Off-Broadway: *Clybourne Park*, *Intimate Apparel*, *East Texas Hotlinks*, *The Merry Wives of Windsor*, *All Over*. Regional: *August Wilson's 20th Century*, *Welcome Home Jenny Sutter*, *Soul Possessed* (Kennedy Center); *Importance of Being Earnest*, *Crowns*, *Ah Wilderness*, *Once In A Lifetime*, *Death of a Salesman*, among others (Guthrie); *A Delicate Balance*, *Awake and Sing!*, *South Pacific*, *Polk County*, *A Midsummer Night's Dream* (Helen Hayes Award) (Arena Stage). Center Theatre Group

and LA: *Clybourne Park*, *Intimate Apparel*, *Twilight: Los Angeles, 1992*, *Quilters* (Mark Taper Forum); *Purlie* (Pasadena Playhouse).



CRICKET S. MYERS (*Sound Design*). Broadway: *Bengal Tiger at the Baghdad Zoo* (Drama Desk Award, Tony nomination). Off-Broadway: *Marvelous Wonderettes*. Mark Taper Forum: *Burn This*, *The Lieutenant of Inishmore*

(Ovation nomination), *Bengal Tiger at the Baghdad Zoo*, *The Subject Was Roses*, *The School of Night*, *Nightingale*. Kirk Douglas Theatre: *The Wake*, *Bengal Tiger at the Baghdad Zoo* (Ovation nomination), *The Little Dog Laughed* (Ovation nomination), *Two Unrelated Plays by David Mamet*, *Come Back*, *Little Sheba*. Regional: *The Nightingale* (La Jolla Playhouse), *Book Club Play* (Arena Stage), *In the Wake* (Berkeley Rep), *Wrecks*, *Some Girl(s)*, *Emergency* (Ovation, NAACP nomination; Geffen), *Elemeno Pea*, *Three Days of Rain*, *Trip to Bountiful* (South Coast Rep), *Crowns*, *Orson's Shadow* (Pasadena Playhouse), *Marvelous Wonderettes* (Laguna Playhouse). Cricket has earned 13 Ovation nominations, as well as winning an LADCC and a Garland Award. www.cricketsmyers.com.

CAROL F. DORAN (*Wigs and Hair Design*).

CTG: Over 40 productions including *A Raisin in the Sun*, *Lieutenant of Inishmore*, *Parade*, *Pippin*. Other L.A.: *Mask*, *Sister Act*, *Stormy Weather* (Pasadena Playhouse); several shows at The Geffen and Deaf West Theatres. Broadway: *Big River*, *King Hedley II*, *Seven Guitars*. National Tours: *Big River*. Regional: *KA*, *Believe*, *Viva Elvis*, *Kooza*, *Iris*, *Zumanity* (Cirque du Soleil); The Asolo Theatre, South Coast Repertory, La Jolla Playhouse, The Goodman Theatre, Actor's Theatre of Louisville, A.C.T. and Ford's Theatre. Internationally: England and South Africa. Film: Over 80 feature films including *The Dark Knight Rises*, *Thor*, *Eagle Eye*, *Borat*, *For Your Consideration*, *Spider-Man 3*, *The Alamo*, *Bad Santa* and *Adaptation*. Television: *One Tree Hill*, *Grey's Anatomy*, *House*, *Angel*, *Buffy the Vampire Slayer*, *Six Feet Under* and others. Carol owns the wig company, *Wigged Out*, and sits on the Board of Directors of Deaf West Theatre.



KATHRYN BOSTIC (*Original Music*).

Kathryn has written music for numerous theatre, film and TV productions. She received a Drama Desk nomination for Outstanding Music in a Play for the Broadway hit *Bengal Tiger at the Baghdad Zoo*.

Her score and ambient textures for this

play garnered a win in the sound design category and a Tony nomination. Nominated for two Ovation Awards, *Bengal Tiger* and *Ma Rainey's Black Bottom*, and two NAACP Awards – *Ma Rainey's Black Bottom* and *Of Equal Measure*. Kathryn is also the recipient of the prestigious Sundance Fellowship for Film Scoring. Broadway: *Gem of the Ocean*, *Bengal Tiger at the Baghdad Zoo*. Center Theatre Group Highlights: *Bengal Tiger at the Baghdad Zoo*, *Radio Golf*, *Gem of the Ocean*, *Eclipsed*, *Of Equal Measure*. Regional: *Brothers Size* (Seattle Rep), *Harlem* (Kennedy Center), *Death and the King's Horseman* (Syracuse Stage), *Little Women* (Cornell University's Schwartz Center for the Performing Arts), *The Ballad of Emmett Till* (Goodman Theatre), *Emergency* (Geffen Playhouse). Other Regional Theatres: Center Stage, Signature Theatre, Illusion Theater.

DAVID BLACKWELL (*Production Stage Manager*). David Blackwell historically became the youngest stage manager on Broadway at age 16! His work on original Broadway and national tour productions include *A Raisin in the Sun*, *Dreamgirls*, *Sweet Charity*, *The Wiz*, *Timbuktu*, *Showboat*, *Sophisticated Ladies*, *Beauty and the Beast*. In 1988 David moved into his television career as key stage manager/guest director for *A Different World*, *Fresh Prince of Bel Air*, *Sister Sister* and *Last Comic Standing*. David is delighted to accompany Phylicia on this journey as they explore the complexities of human nature, with a shared vehemence for the arts. He brings to every project approached the gifts of a culturally rich childhood, and the invaluable professional and ethical lessons learned from his phenomenal parents, the beloved Mr. Charles and Mrs. Frances Butler Blackwell.

MICHELLE BLAIR (*Stage Manager*). For CTG: *Backbeat*, *Krapp's Last Tape*, *Red*, *Los Otros*, *Clybourne Park*, *Vigil*, *Poor Behavior*, *Burn This*, *Leap of Faith*, *The Lieutenant of Inishmore*, *Parade*, *Lydia*, *The School of Night*, *Bloody Bloody Andrew Jackson*, *Distracted*, *Nightingale*, *Without Walls*, *Lewis and Clark Reach the Euphrates*, *all wear bowlers* (also at the Barbican Theatre, Berkeley Rep., La Jolla Playhouse and Studio Theatre), *Flight*, *Nothing But The Truth*, *Stones in His Pockets*, *Topdog/Underdog* and "QED"

at Lincoln Center Theater. Other favorites include *The Pee-wee Herman Show* at Club Nokia, *A Long Bridge Over Deep Waters* with Cornerstone Theater Company and *Amnesia Curiosa* with the gentlemen of Rainpan 43. Graduate of the University of Southern California and the University of Amsterdam. Mom to four-year-old Liam and one-year-old Imogen.



MICHAEL RITCHIE (*Artistic Director*)

is in his eighth season as Center Theatre Group's Artistic Director, and has led over 100 productions to the Ahmanson, Taper and Douglas stages since his arrival in 2005. From 1996 to 2004 Michael was the Producer of the Williamstown Theatre Festival and prior

to that he was a Production Stage Manager in NYC. At CTG, he premiered six musicals that moved to Broadway—*The Drowsy Chaperone* (which won 13 Tony Award nominations), *Curtains* (eight Tony nominations) *13, 9 to 5: The Musical*, *Bloody Bloody Andrew Jackson* and *Leap of Faith*. He has produced 30 world premieres including the musicals *Minsky's*, *Venice* and *Sleeping Beauty Wakes*, and the plays *Bengal Tiger at the Baghdad Zoo* (a Pulitzer Prize finalist that also moved to Broadway), *Water & Power* and *Yellow Face*, and he presented a broad range of plays and musicals ranging from *Dead End* to *The Black Rider* to *Edward Scissorhands* to blockbusters such as *God of Carnage*, *Mary Poppins*, *Jersey Boys* and *August: Osage County*. In addition, Michael inaugurated CTG's New Play Production Program, designed to foster the development and production of new work.



EDWARD L. RADA (*Managing Director*)

returned to Center Theatre Group in 2011 after previously serving as CTG's Chief Financial Officer for 12 years (1996 – 2008). Rada spent three years (2008 – 2011) as President of the Music Center Foundation, a non-profit corporation that holds and invests the

endowment and reserve funds for the Music Center and its resident companies (including CTG). Prior to his years at CTG, he was the Director of Finance at The Old Globe in San Diego and principal of Rada & Associates, an accounting firm that specialized in entertainment-related non-profit organizations and theatrical productions. He is a graduate of Occidental College in Los Angeles with numerous post-graduate coursework and credentials. He currently serves on the board of directors for Entertainment Industry Foundation, Theatre @ Boston

Court, and United Support of Artists for Africa/ USA for Africa, among other affiliations. He also serves on the board of trustees for the pension, health and welfare and 401(k) plans of I.A.T.S.E. Local 33 Stagehands Union.



DOUGLAS C. BAKER (*Producing Director*) is now in his 23rd season at CTG. Previously, he managed Broadway and touring productions including *Tru*, *Born Yesterday*, *The Gospel at Colonus*, *Annie*, *A Chorus Line*, *Working*, *The Wiz* and *Legends!*

starring Mary Martin and Carol Channing which premiered at the Ahmanson Theatre in 1986. Baker is a graduate of Albion College, is an active member of the Broadway League, the Independent Presenters Network and is a proud member of the Association of Theatrical Press Agents and Managers.

KELLEY KIRKPATRICK (*Associate Artistic Director*). Since arriving at CTG in 2005, Kelley has produced over 40 productions at the Ahmanson Theatre, Mark Taper Forum and Kirk Douglas Theatre, many of which have gone on to future lives on Broadway,



off-Broadway and beyond. In addition to producing shows across CTG's three stages, he has had the privilege of collaborating with numerous local and national artists to commission and develop new works.



GORDON DAVIDSON (*Founding Artistic Director*) led the Taper throughout its first 38 seasons, guiding over 300 productions to its stage and winning countless awards for himself and the theatre — including the Tony Award for theatrical excellence, Margo Jones Award, The Governor's Award for the Arts and a Guggenheim fellowship. *The Kentucky Cycle* and *Angels in America* (Part One) won the Pulitzer in consecutive years and, in 1994, three of the four plays were from the Taper (*Angels in America* won). In 1989 Gordon took over the Ahmanson and, in 2004, he produced the inaugural season in the Kirk Douglas Theatre.

Additional staff for *Joe Turner's Come and Gone*

Assistant Director Andi Chapman
 Assistant to the Director Eja Wong
 Assistant Costume Designer Kristen Kopp
 Assistant Lighting Designer Phil Kong
 Prop Assistant Zach Istrin
 Dialect Coach Denise Woods
 Creative Movement Eartha Robinson
 Makeup Design Geneva Nash-Morgan
 Production Assistant T.J. Kearney
 Studio Teacher Marie Rogers

CREDITS

Set Construction by F & D Scene Changes, Ltd.
 Costumes provided by the Center Theatre Group Costume Shop and additional staff:
 Cutter/Draper – Lisa Logan; First Hands – Iris Marshall, Whitney Oppenheimer, Jennifer Wolff;
 Stitchers – Ophelia Brown, Allison Dillard, Leonardo Lopez; Crafts/Dyer/Paitner – Whitney Oppenheimer, Mara Holland; FIDM Interns:
 Kelsey Crampton, Agnes Ingram, Stephanie Semerenko. Rehearsal and production photography by Craig Schwartz.



CTG thanks the
CALIFORNIA AFRICAN AMERICAN MUSEUM
 for partnering on the exhibit
 "African Americans in Southern California in the era of *Joe Turner*," which is located in the upper and lower lobbies.



ONLINE

CenterTheatreGroup.org
 #JoeTurner
 Like us on Facebook **Center Theatre Group**
 Follow us on Twitter **@CTGLA**
 Subscribe on YouTube **CTGLA**



The Actors and Stage Managers employed in this production are members of Actors' Equity Association, the Union of Professional Actors and Stage Managers of the United States. This Theatre operates under an agreement between the League of Resident Theatres and Actors' Equity Association, the Union of Professional Actors and Stage Managers in the United States.



The following employees are represented by the International Alliance of Theatrical Stage Employees, Moving Picture Machine Operators, Artists and Allied Crafts of the United States, its Territories and Canada, AFL-CIO, CLC: Stage Crew Locals 33; Local Treasurers and Ticket Sellers Local 857; Wardrobe Crew Local 768; make-up Artists and Hair Stylists Local 706.

ATPAM

The Press Agents and House Managers employed in this production are represented by the Association of Theatrical Press Agents & Managers.



The Director is a member of the Stage Directors and Choreographers Society, a national theatrical labor union.

Center Theatre Group is a member of the American Arts Alliance, the Broadway League, Independent Producers' Network (IPN), LA Stage Alliance, League of Resident Theatres (LORT), National Alliance for Musical Theatre (NAMT) and the Theatre Communications Group (TCG).



CENTER THEATRE GROUP L.A.'s Theatre Company

MICHAEL RITCHIE, Artistic Director EDWARD L. RADA, Managing Director

DOUGLAS C. BAKER, Producing Director

ARTISTIC

NEEL KELLER Associate Artistic Director
KELLEY KIRKPATRICK Associate Artistic Director
DIANE RODRIGUEZ Associate Producer/Director of New Play Production
PIER CARLO TALENTI Resident Dramaturg/Literary Manager
LINDSAY ALLBAUGH Producing Associate
MALCOLM K. DARRELL New Play Production Associate
JOY MEADS Literary Associate
ERIKA SELLIN Director of Casting
MARK B. SIMON Casting Director
ANDY CROCKER Casting Associate
KEVIN L. CORDOVA Casting Administrator

DAVID ADJMI (FADIMAN), BURGLARS OF HAMM, JUSTIN ELLINGTON, GINA GIONFRIDDO, GOB SQUAD, SAM GOLD, DANAI GURIRA, JOE HORTUA, NICK JONES, RAJIV JOSEPH, LATINO THEATER COMPANY, DAVE MALLOY, LAURAL MEADE, JULIE MARIE MYATT (FADIMAN), DAN O'BRIEN, EVANGELINE ORDAZ, DAEL ORLANDERSMITH, WILL POWER (FADIMAN, MATT SAX, UNIVERSES) Commissioned Artists

ZAKIYAH ALEXANDER, SHEILA CALLAGHAN, JONATHAN CENICEROZ, MATT GOULD, GRIFFIN MATTHEWS, MEG MIROSHNIK, TANYA SARACHO, JOHN SINNER CTG Writers' Workshop Members

EDUCATION AND COMMUNITY PARTNERSHIPS

LESLIE K. JOHNSON Director of Education and Community Partnerships
DEBRA PIVER Associate Director of Education and Community Partnerships
TRACI CHO Director of School Partnerships
PATRICIA GARZA Senior Manager for Education and Community Partnership
CAMILLE SCHENCKAN Educational Programs Manager
DAN HARPER Educational Programs Associate
ASHLEY OPSTAD Educational Programs Associate
KELLY CHRIST Educational Communications Coordinator
VICTOR VAZQUEZ Educational Services Coordinator
SHANNON WINSTON Assistant to the Director of Education and Community Partnerships

MANAGEMENT AND ADMINISTRATION

NAUSICIA STERGIOU General Manager (Mark Taper Forum, Kirk Douglas Theatre)
JEFFREY UPAH General Manager (Ahmanson Theatre)
SUZANNE HEE MAYBERRY Assistant General Manager (Mark Taper Forum)
KATIE BRUNER SOFF Assistant General Manager (Kirk Douglas Theatre, New Play Production)
ALANA BEIDELMAN Executive Assistant to Managing Director
LIZ LYDIC Assistant to Producing Director
SHANE HUDSON Yale Management Fellow
ERIC SIMS Operations Manager (Kirk Douglas Theatre)
TOM BURMESTER Performance Manager (Kirk Douglas Theatre)
LAUREN BAXA Assistant Performance Manager (Kirk Douglas Theatre)
MIKE KINDLE Facilities Assistant (Kirk Douglas Theatre)
SONDRA MAYER Concessions Manager (Kirk Douglas Theatre)

PRODUCTION

JONATHAN BARLOW LEE Production Manager (Mark Taper Forum)
CELESTE SANTAMASSINO Associate Production Manager (Mark Taper Forum)
EMMET KAISER Master Carpenter (Mark Taper Forum)
ROBERT RUBY Master Propertyman (Mark Taper Forum)
WILLIAM MORNER Master Electrician (Mark Taper Forum)
BONES MALONE Master Soundman (Mark Taper Forum)
DENNIS SEETOO Wardrobe Supervisor (Mark Taper Forum)
RICK GEYER Hair & Make-up Supervisor (Mark Taper Forum)
LINDA WALKER House Manager (Mark Taper Forum)
JOE HAMLIN Technical Director
CHAD SMITH Assistant Technical Director
SAM CRAVEN-GRIFFITHS Assistant Technical Director
SARAH SOWELL Shop Foreperson

DAWN HOLISKI Shop Director
ANDREW THIELS Prop Manager
MERRIANNE NEDREBERG Prop Lead
SARAH KRANIN Prop Shopper
CANDICE CAIN Costume Shop Director
BRENT M. BRUIN Workroom Supervisor
MADELINE KELLER Costume Generalist
SWANTJE TUOHINO Tailor
ELIZABETH LEONARD Production Operations Manager
JULIO A. CUELLAR Driver/Custodian
EUGENE A. MONTEIRO II, BRIAN SLATEN Drivers
ELLE AGHABALA Interim Production Administrator
SHAWN ANDERSON Master Carpenter (Ahmanson Theatre)
ANDREW W. ARNOLD Flyman (Ahmanson Theatre)
JIM BERGER Master Electrician (Ahmanson Theatre)
STAN STEELMON Master Propertyman (Ahmanson Theatre)
ROBERT SMITH Master Soundman (Ahmanson Theatre)
MICHAEL GARDNER Wardrobe Supervisor (Ahmanson Theatre)
PATRICE MIRANDA Hair Supervisor (Ahmanson Theatre)
CHRISTINE L. COX House Manager (Ahmanson Theatre)
CHRISTY WEIKEL Production Manager (Kirk Douglas Theatre)
KATE COLTUN Assistant Production Manager (Kirk Douglas Theatre)
RICHARD PETERSON Master Electrician (Kirk Douglas Theatre)
ADAM PHALEN Head Audio (Kirk Douglas Theatre)

FINANCE, INFORMATION SYSTEMS AND HUMAN RESOURCES

MICHAEL F. THOMPSON Chief Financial Officer
MELODY MATTOS Contoller
JANIS BOWBER Assistant Contoller
FELICISIMA LAPID Accounts Payable Supervisor
DANNY LAMPSON Senior Staff Accountant
ALEGRIA SENA Staff Accountant
YUEN KI "ANNIE" LAW Payroll Manager
AMEETA SHARMA Payroll Specialist
DAVE ALTON Chief Information Officer
STAN GRUSHESKY Director of Information Systems
SEAN PINTO Database And Web Manager
MANDY RATLIFF Tessitura Administrator
JARED WATANABE Information Systems Analyst

JODY HORWITZ Director of Human Resources
MADRIO FLEEK Interim Senior Human Resources Generalist
JENNIFER ACHTERBERG Facilities Manager
SINGER LEWAK, LLP Auditor
MICHAEL C. DONALDSON, LISA A. CALLIF Legal Counsel
GIBSON, DUNN & CRUTCHER Legal Counsel

DEVELOPMENT

YVONNE CARLSON BELL Director of Development
PATRICK OWEN Deputy Director of Development
NATALIE BERGESON Director of Donor Contributions
JEAN KLING Director of Institutional Support
LIZ LIN Director of Corporate Relations and Communications
CHARITY WU Director of Individual Giving
BECKY BIRDSONG Major Gifts Officer
SANDRA EBEJER Corporate Relations Officer
JAMIE CATALDO Corporate Relations Manager
MANDI OR Special Events Manager
JENNIFER RYEN Major Gifts Manager
ERIC BROWN Communications Coordinator
JENNIFER CHAN Development Assistant
KATY HILTON Grant Writer
DONALD JOLLY Donor Relations Associate for the Inner Circle
RICK LEE Donor Contributions Supervisor
KRISTEN LEVY-VAUGHAN Individual Giving Assistant
ERIC SEPPALA Executive Assistant to the Development Director
MARIA PAREDES Donor Relations Associate for The Guild
COURTNEY ROBERTSON Institutional Giving Associate
ERIN SCHLABACH Donor Contributions Associate
ELIZABETH WACHTEL Major Gifts Associate
AL BERMAN, ELIZABETH DELLORUSSO, GINA EAST, LILI HERRERA, TONY LEWELLEN, JESSICA NASH, HOLLY RAMOS, NICOLE SCIPIONE, LENA THOMAS, BILL WALTON, REHA ZAMANI Donor Advisors
ADAM BURCH, KARLA GALVEZ Donor Services Associates
ANNE BRUNER, MURRAY E. HELTZER, MARCI MILLER, JULIE NADAL Development Volunteers

MARKETING AND COMMUNICATIONS

JIM ROYCE Director of Marketing, Communications and Sales
NANCY HEREFORD Director of Media and Communications
PHYLLIS MOBERLY Media and Communications Associate
JASON MARTIN Media and Communications Associate
SHANNON SMITH Media and Communications Assistant
LYN COWAN Media and Communications Assistant
CHRISTOPHER KOMURO Art Director
IRENE KANESHIRO, NISHITA DOSHI Senior Designers
HARUKA HAYAKAWA Graphic Designer
TERESA ENGLISH Junior Graphic Designer
ANDREW DARCEY Advertising Manager
JIM HALLORAN Marketing Associate, Creative
JEWEL MOORE Marketing Coordinator
ROSE POIRIER Webmaster
KAREN VOCK Marketing Manager
CRAIG SCHWARTZ Production Photographer
LARRY DEAN HARRIS Copywriter
CINEVATIVE/MARK CIGLAR Production Video
TOM BURMESTER, TREVOR ALGATT, KEVIN MAPP Event Video
ALLIED LIVE:
LAURA MATALON, LESLEY-ANNE STONE, KELLY ESTRELLA Advertising Agency
LINDA STEWART, IT IS DONE COMMUNICATIONS Public Relations Consultant

TICKET SALES AND SERVICES

SHAWN ROBERTSON Ticket Sales Director
SKYPP CABANAS Ticket Operations Coordinator
SANDY CZUBIAK Audience and Subscriber Services Manager
JENNIFER BAKER, CHERYL HAWKER, RICHARD RAGSDALE Audience Services Supervisors
ALICE CHEN Audience Services Asst. Supervisor
SAM AARON, DEBORAH REED Audience Services Sales Associates
JEREMIE ARENCIBIA, VICKI BERNDT, RJ CANTU, CARLOS D. CHAVEZ, JR., PETER COLBURN, HESPER COLOHAN, DONALD CRANDALL, GARY HOLLAND, KAY LOCHARD, JUSTINE PEREZ, LEX SAVKO, DANNY SCHMITZ, CRIS SPACCA, TRAVIS WOOD Audience Services Representatives
DANUTA SIEMAK Subscriber Services Supervisor
CHRISTINA GUTIERREZ Subscriber Services Asst. Supervisor
LIGIA PISTE, CELIA RIVAS Subscriber Services Senior Representatives
IRENE CHUANG, PETER STALOCH Subscriber Services Representatives
SARAH K. GONTA Box Office Treasurer
KISHISA ROSS, GISELE FRAZEUR Assistant Treasurers
YULIZA BARRAZA, ANGELICA CARBAJAL, MICHAEL KEMPISTY, LEROY PAWLOWSKI, MICHAEL SALTZMAN Box Office Staff
MICHAEL ZOLDESSY Account Sales Manager
EILEEN ROBERTS Account Sales Associate
KERRY KORF Priority Services Director
SUSAN F. TULLER Priority Services Operations Manager
JAY BURNS Priority Services Sales Manager
PAUL CUEN Priority Services Manager
CAROLE BAXTER, RUSTY COLLINS, SUZANNE "MAGGIE" DODD, MARC "BYRON" DROTMAN, SAMANTHA ELSE, LOU GEORGE, KATE HALL, JERRY JOHNSTON, LISA KESSLER, SHEP KOSTER, ELENA MUSLAR, BRIAN "WILLIAM" PACHINGER, MATT PELFREY, EDWARD "MAX" RAZOR, JASMINE REGALA, KEN SALLEY, BOBBI LYNN SCOTT, MICHAEL SMITH, JEFFREY STUBBLEFIELD, QUINN SULLIVAN, CANDICE WALTERS, KATHRYN TABB, DIANE WARD, JIM WATERMAN Representatives

INTERNS

NANCY AVILA, AMY BUCHWALD, KELSEY CRAMPTON, CHRISTINE CROWLEY, AGNES INGRAM, MITZI MILLINER, OLIVER SAKS, STEPHANIE SEMERENKO, LESLIE STELLWAGEN, BRIAN TANKSLEY, MARISOL TORRES, EMILY VALLA, DEVON ZEREBKO.

Center Theatre Group would like to thank its exceptional staff for their ongoing commitment, dedication and extraordinary efforts.