

Kirk Douglas Theatre 2014/15 Season



FIRST SEASON PRODUCTION

Race

By David Mamet
Directed by Scott Zigler
August 31 – September 28, 2014

SECOND SEASON PRODUCTION

Goodman Theatre
World Premiere Production of
Luna Gale

By Rebecca Gilman
Directed by Robert Falls
November 23 – December 21, 2014

THIRD SEASON PRODUCTION

Chavez Ravine: An L.A. Revival

By Culture Clash
Directed by Lisa Peterson
January 27 – March 1, 2015

FOURTH SEASON PRODUCTION

Girlfriend

Book by Todd Almond
Music and Lyrics by
Matthew Sweet
Directed by Les Waters
July 12 – August 9, 2015

DOUGLASPLUS

Facing Our Truth: Ten-Minute Plays on Trayvon, Race and Privilege

In association with
The New Black Fest
July 13, 2014

Western Society

Devised and Performed by
Gob Squad
Co-presented with and
Performed at REDCAT
United States Premiere
September 17 – 20, 2014

Forever

Written and Performed by
Dael Orlandersmith
Directed by Neel Keller
World Premiere
October 9 – 26, 2014

Throw Me on the Burnpile and Light Me Up

Written and Performed by
Lucy Alibar
Directed by Neel Keller
May 21 – 31, 2015

How to be a Rock Critic

Based on the writing of
Lester Bangs
By Jessica Blank and Erik Jensen
Performed by Erik Jensen
Directed by Jessica Blank
Presented at Upstairs@KDT
World Premiere Production
June 17 – 28, 2015

Inspiring Our Future

Special Thanks to Center Theatre Group's Most Generous Annual Patrons

Center Theatre Group wishes to thank the following donors for their significant gifts and for their belief in the transformative power of theatre.

\$1 MILLION AND ABOVE

The Ahmanson Foundation
Brindell Roberts Gottlieb

\$250,000 AND ABOVE

Center Theatre Group Affiliates
Kirk & Anne Douglas
Patricia Glaser & Sam Mudie
The James Irvine Foundation
The Andrew W. Mellon Foundation

\$150,000 AND ABOVE

Anonymous (1)
Bank of America
The Blue Ribbon
Laura & James Rosenwald & Orinoco Foundation
The Shubert Foundation, Inc.
Wells Fargo Foundation

\$100,000 AND ABOVE

Annenberg Foundation
Anonymous (1)
Cindy & Gary Frischling
Ann & Stephen F. Hinchliffe, Jr.
JPMorgan Chase & Co.
The Norman and Sadie Lee Foundation
Los Angeles County Arts Commission
Renee & Meyer Luskin
Deena & Edward Nahmias
Eva & Marc Stern

\$75,000 AND ABOVE

Elisabeth Katte Harris Trust
The Ralph M. Parsons Foundation
Lloyd E. Rigler — Lawrence E. Deutsch Foundation

This list includes cash gifts received by Center Theatre Group between
April 8, 2014, and June 8, 2015.



Center Theatre Group
L.A.'s Theatre Company

Ahmanson Theatre
Mark Taper Forum
Kirk Douglas Theatre

Michael Ritchie, ARTISTIC DIRECTOR Stephen D. Rountree, MANAGING DIRECTOR Douglas C. Baker PRODUCING DIRECTOR
Gordon Davidson, FOUNDED ARTISTIC DIRECTOR

PRESENTS THE

ACTORS THEATRE OF LOUISVILLE PRODUCTION OF

GIRLFRIEND

BOOK BY

Todd Almond

MUSIC AND LYRICS BY

Matthew Sweet

WITH

Ryder Bach **Curt Hansen**

SCENIC AND COSTUME DESIGN BY

David Zinn

LIGHTING DESIGN BY

Ben Stanton

SOUND DESIGN BY

Jake Rodriguez

MUSIC DIRECTION BY

Julie Wolf

ASSOCIATE ARTISTIC DIRECTOR

Kelley Kirkpatrick

PRODUCTION STAGE MANAGER

Paul Mills Holmes

CHOREOGRAPHY BY

Joe Goode

DIRECTED BY

Les Waters

Music published by EMI Blackwood Music Inc.

Girlfriend was originally produced by Berkeley Repertory Theatre, Berkeley, CA
Tony Taccone, Artistic Director/Susan Medak, Managing Director,
developed with the assistance of director Patrick Trettenero.

Support for *Girlfriend* was provided by Barbara Broccoli and Patrick Milling Smith.

July 12 – August 9, 2015
Kirk Douglas Theatre



L - R: Ryder Bach and Curt Hansen in the 2013 Actors Theatre of Louisville production of *Girlfriend*. PHOTO BY ALAN SIMONS.



Curt Hansen in the 2013 Actors Theatre of Louisville production of *Girlfriend*. PHOTO BY ALAN SIMONS

CAST

(in alphabetical order)

Ryder Bach.....Will
Curt Hansen.....Mike

THE BAND

Julie Wolf.....Conductor, Keyboard, Guitar
Vivi Rama.....Bass Player
Janet Robin.....Lead Guitar
Jyn Yates.....Drummer

STAGE MANAGER

T.J. Kearney

TIME

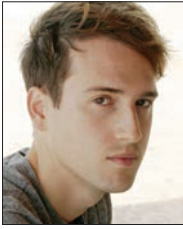
Summer 1993.

PLACE

Alliance, Nebraska.

Girlfriend is performed without an intermission.

Who's Who



RYDER BACH (*Will*) originated the role in *Girlfriend* at Berkeley Rep. After a year-long hiatus from his critically acclaimed nu-disco band, Body Parts,

Ryder is set to release his debut solo EP *People Are Evil; You're All Included* via Musical Theater Records. Bach resides in Chinatown, Los Angeles, where he produces music. Love to Patti, Michael, Sara, Trevor and Chase. He would like to dedicate this performance to Cherisse Gray. Instagram and Twitter: @ryderbach.



CURT HANSEN (*Mike*). Broadway: *Next to Normal*, *Hairspray*. First National Tours: *Wicked* (Fiyero), *Next to Normal* (Gabe). Film: *B-Side*,

Monkeywrench and *People You May Know*. Television: Nickelodeon's *Big Time Rush* as Dak Zevon and *The Good Wife*. Other Theatre Credits: *Parade* (Center Theatre Group), *Stillwater* (written by Nathan Tysen at Kansas City Rep), Lythgoe Family Productions' *A Snow White Christmas* (Pasadena Playhouse) and Rocky Mountain Repertory Theatre. Selected New York Readings: *IT'S ON* (New York Musical Theatre Festival), *8* (Williamstown Theatre Festival), *In Love with Jobim* (York Theatre), *Charlie and the Chocolate Factory*, *BARE* and *The Flamingo Kid*. Hansen grew up in Wisconsin and is in love with his fiancée Mallauri. He also loves his family. CurtHansen.com; @curt_hansen.

TODD ALMOND (*Book*) is a composer, lyricist and playwright whose most recent musical *Iowa*, with Jenny Schwartz, received its world premiere at Playwrights Horizons this past March. His musical *Melancholy Play*, written with Sarah Ruhl, is currently enjoying its world premiere at Trinity Repertory Company. Other credits include *Kansas City Choir Boy* starring Almond and Courtney Love, musical adaptations of *Tempest* and *Winter's Tale* with director Lear deBessonet at the Delacorte Theater for The Public Theater's Public Works Program, *Stage Kiss*, music and lyrics for *We Have Always Lived In The Castle* and his own musical adaptation of

The Odyssey at The Old Globe. Todd's albums include *Mexico City* and his newly released *Memorial Day*.

MATTHEW SWEET (*Music and Lyrics*). Sweet's albums include *Inside* (1986), *Earth* (1989), *Girlfriend* (1991), *Altered Beast* (1993), *Son of Altered Beast* (1994), *100% Fun* (1995), *Blue Sky on Mars* (1997), *In Reverse* (1999), *The Thorns* (2003), *Kimi Ga Suki* (2004) and *Living Things* (2004). He has recorded three volumes of classic hit duets from the 60s and 70s, *Under the Covers Vol. 1* (2006), *Vol 2* (2009) and *Vol 3* (2013) with Susanna Hoffs; his solo album, *Sunshine Lies*, in 2008; and his most recent album, *Modern Art*, in 2011.

LES WATERS (*Director*). Obie Award-winner Les Waters recently directed *Marjorie Prime* by Jordan Harrison (Mark Taper Forum), *The Glory of the World* by Charles Mee (2015 Humana Festival of New American Plays), *10 out of 12* by Anne Washburn (Soho Rep). He is the Artistic Director of Actors Theatre of Louisville, where his productions include *At the Vanishing Point* by Naomi Iizuka, Lucas Hnath's *The Christians*, *Our Town*, Will Eno's *Gnit*, Todd Almond's *Girlfriend* and *Long Day's Journey into Night*. In the last 10 years, his shows have ranked among the year's best in The New Yorker, The New York Times, Time Out New York, Time Magazine and USA Today. His productions have been seen in New York at The Public Theater, Second Stage, Manhattan Theatre Club, Connelly Theater and Clubbed Thumb, and regionally at theatres such as Steppenwolf Theatre Company, the Goodman Theatre, Yale Repertory Theatre, American Conservatory Theater, La Jolla Playhouse and American Repertory Theatre. In 2009, he made his Broadway debut with *In the Next Room or the vibrator play*.

JOE GOODE (*Choreography*) is a choreographer, writer and director widely known as an innovator in the field of dance for his willingness to collide movement with spoken word, song and visual imagery. Joe Goode Performance Group, formed in 1986, tours regularly throughout the U.S. Goode was awarded the United States Artists Glover Fellowship in 2008,

a John Simon Guggenheim Fellowship in 2007 and the New York Dance and Performance Award (Bessie). Goode is known as a master teacher; his workshops and classes in "felt performance" are hugely popular. He is a member of the faculty of the University of California, Berkeley, in the department of Theater, Dance and Performance Studies.

DAVID ZINN (*Scenic and Costume Design*). CTG: *Costumes for The Cider House Rules*, *Bengal Tiger at the Baghdad Zoo*. Broadway: Set and costumes for *Fun Home*, *The Last Ship* and *Seminar*; costumes for *Airline Highway*, *Rocky*, *Good People*, *Other Desert Cities*, *In The Next Room* (Tony nomination), *Xanadu*; sets for *The Real Thing*, *Violet*, *The Realistic Joneses*. Off-Broadway: Set and costumes for *The Flick*, *Circle Mirror Transformation*, *Choir Boy*, *Dogfight*. Regional: ART, Guthrie, Berkeley Rep, Yale Rep, La Jolla Playhouse, Steppenwolf. Opera: Lyric Opera Chicago, Santa Fe Opera, Los Angeles Opera, Washington National Opera. Tony, Drama Desk, Lortel nominations.

BEN STANTON (*Lighting Design*). CTG: *The Black Suits*, *Humor Abuse*, *Poor Behavior*, *Burn This*, *Seminar*. Broadway: *Fun Home* (Tony nomination, Circle in the Square), *An Enemy of the People* (Friedman Theatre), *Seminar* (Golden Theatre). Off-Broadway: *Fun Home* (Lortel nomination, The Public), *The Nether* (Lortel nomination, MCC Theater), *Our Lady of Kibeho* (Drama Desk nomination), *Kung Fu*, *Angels In America* (Signature Theatre), *Murder Ballad* (Lortel nomination, MTC/Union Square Theater), *Belleville* (Lortel nomination, NYTW), *Into The Woods* (Delacorte), *The Whipping Man* (Lortel Award, Drama Desk nomination, MTC). Regional: La Jolla Playhouse, Old Globe, South Coast Rep, Goodman Theatre, Shakespeare Theatre, Hartford Stage, Long Wharf, Dallas Theater Center, Huntington Theatre, WTF, Philadelphia Theatre Co., Paper Mill Playhouse, McCarter, Intiman, Actors Theatre of Louisville. Concert designs for Regina Spektor, Sufjan Stevens, Beirut, St. Vincent. Touring lighting designer for The National.

JAKE RODRIGUEZ (*Sound Design*) is a sound designer based out of the San Francisco Bay Area and works at regional theatres around the United States. Recent credits include *Mr. Burns: A Post-Electric Play* at American Conservatory Theater and Guthrie Theater, *X's and O's (A Football Love Story)* at Berkeley Repertory Theatre, *The Christians* and *brownsville song (b-side for tray)* at Actors Theatre of Louisville, *The Orphan of Zhao* at American Conservatory Theater and La Jolla Playhouse, *Buried Child* at Magic Theatre and *Emotional Creature* at the Pershing Square Signature Center. Rodriguez is the recipient of a 2004 Princess Grace Award.

JULIE WOLF (*Music Direction, Conductor, Keyboard, Guitar*) is a music producer, composer, multi-instrumentalist, music director and teacher. She has appeared on stages around the world and on numerous critically acclaimed recordings. She's collaborated with Carly Simon, Indigo Girls, Ani DiFranco and Maceo Parker, among many others. Recent highlights include recording a duet with Carly Simon for the release of *Chimes of Freedom: The Songs of Bob Dylan* and producing Bruce Cockburn. She lives in Oakland, CA, and runs Julie Wolf Music, specializing in music production, composing for film and dance, sound design and music editing. She's an in-house producer at the legendary Fantasy Studios, and has music-directed with Berkeley Repertory Theatre, California Shakespeare Theater, and Actors Theatre of Louisville. She's been with *Girlfriend* since its world premiere at BRT in 2010 and is thrilled to be making her debut at the Kirk Douglas Theatre with this gem! Thanks and love to family, friends and especially to her love, Cici. www.juliewolfmusic.com.

VIVI RAMA (*Bass Player*) has toured with Orianthi, Will.i.am (Black Eyed Peas), Nicole Scherzinger, Macy Gray, Jordin Sparks, The Floacist, Mario, Il Divo, Alana Davis, Dawn Robinson and Klymaxx featuring Cheryl Cooley. Some TV appearances include MTV European Awards, the AMAs, *The Tonight Show with Jay Leno*, *David Letterman Show*, *Jimmy Kimmel Show*, *The Ellen Show*, *Good Morning America*, *The View*, *The Wendy Williams Show*, *Dick Clark's New Year's Rockin' Eve*, *Live with Regis and Kelly*, *Lopez Tonight*, *American Idol*, *So You Think You Can Dance*, *KTLA Morning News*, *Good Day*

NY, U.S. Open 2009, *Late Night with Jimmy Fallon* and *The Graham Norton Show* (UK). Vivi has been interviewed for the Bass Player Magazine, Aguilar Artist Spotlight, German magazine Bass Professor and Czech magazine MUZIKUS. www.viviramamusic.com.

JANET ROBIN (*Lead Guitar*). Music audiences around the world have seen Janet Robin's incredible guitar work as a former touring member of the Lindsey Buckingham Band (from Fleetwood Mac), Meredith Brooks and Air Supply. Guitar World Magazine named her one of the "Top 10 Female Guitar Players." Her latest solo CD, *Everything Has Changed*, was produced by John Carter Cash (Johnny and June's son) and recorded at Cash Cabin Studios in Nashville. She recently coached actress Jennifer Jason Leigh on guitar for Quentin Tarantino's new film *The Hateful Eight* due out December 2015. In addition to being a touring artist, she teaches guitar, conducts workshops and plays upwards of 150 dates a year around the globe. Janet is proud to be a part of the production of *Girlfriend*. www.janetrobin.com.

JYN YATES (*Drummer*) launched her music career at the age of three when she first picked up a pair of drumsticks. After learning techniques from a fellow drummer, who happened to be her father, she was quickly thrust into the veins of music in the 1980s. Jyn has performed for Actors Theatre, Kentucky Center for the Arts, Youth Performing Art School and the Alvin Ailey American Dance Theater. Jyn is a full-time music instructor based in Louisville. She tours with multiple artists throughout the U.S. and continually works in theatre, while also working as a solo artist and music producer. She's excited to be reviving her role in *Girlfriend*, a project that she holds close to her heart as its storyline is a similar replica of her experiences growing up in small-town Kentucky. www.jynyates.com.

PAUL MILLS HOLMES (*Production Stage Manager*). *Girlfriend* is Holmes' first production for Center Theatre Group. He begins his 24th season with Actors Theatre of Louisville in August where he has stage-managed over 120 plays including 21 plays in the Humana Festival of New American Plays. Regional Theatre: *The Glass Menagerie*, *Betsey Brown*, *Indians* and *Three Sisters* at McCarter Theatre Center. Broadway: *Les Liaisons Dangereuses*, *Smile* and

Oh! Calcutta! Off-Broadway: *Little Shop of Horrors*, *Steel Magnolias* and *Oil City Symphony*. Additional Credits: Directed *Little Shop* in Tel Aviv and Tokyo. Thirty-eight seasons at Pennsylvania's Totem Pole Playhouse.

T.J. KEARNEY (*Stage Manager*) is very excited to be returning to Center Theatre Group. The Wallis Annenberg: *Spring Awakening*. El Portal Theatre: *Thieves*. Deaf West Theatre: *Spring Awakening*. Mark Taper Forum: *The Steward of Christendom*, *Humor Abuse*, *Enter Laughing*. Ahmanson Theatre: *Leap of Faith*. National Tour: *Radio City Christmas Spectacular*. Pasadena Playhouse: *South Street*, *Twist! An American Musical*, *Dangerous Beauty*. The Laguna Playhouse: *Six Dance Lessons in Six Weeks*, *Marvelous Wonderettes: Caps and Gowns*, *This Wonderful Life*. Five seasons at Sacramento Music Circus. BFA from CalArts. Special thanks to family for all their love and support. Proud member of Actors' Equity.

MICHAEL RITCHIE (*Artistic Director*) is in his 10th season as Center Theatre Group's Artistic Director, and has led over 190 productions to the Ahmanson, Taper and Douglas stages since his arrival in 2005. From 1996 to 2004 Michael was the Producer of the Williamstown Theatre Festival and prior to that he was a Production Stage Manager in NYC. At CTG, he premiered six musicals that moved to Broadway – *The Drowsy Chaperone* (which won 13 Tony Award nominations), *Curtains* (eight Tony nominations) 13, 9 to 5: *The Musical*, *Bloody Bloody Andrew Jackson* and *Leap of Faith*. He has produced 40 world premieres including the musicals *Minsky's*, *Venice* and *Sleeping Beauty Wakes*, and the plays *Bengal Tiger at the Baghdad Zoo* (a Pulitzer Prize finalist that also moved to Broadway), *Water & Power* and *Yellow Face*, and he presented a broad range of plays and musicals ranging from *Dead End* to *The Black Rider* to *Edward Scissorhands* to blockbusters such as *God of Carnage*, *Mary Poppins*, *Jersey Boys* and *August: Osage County*. In addition, Michael inaugurated CTG's Artistic Development Program, designed to foster the development and production of new work.

STEPHEN D. ROUNTREE (*Managing Director*) joins Center Theatre Group this year as its new Managing Director. He was previously the President and

CEO of The Music Center (2002-2014) and held the position of CEO of the Los Angeles Opera concurrently from 2008-2012. Prior to The Music Center, Rountree served the J. Paul Getty Trust for 22 years, starting in 1980 as Deputy Director of the Getty Museum. In 1984, he was appointed Director of the Getty Center Building Program, with responsibility for managing all aspects of project development, design, and construction of the Getty Center in Los Angeles. In January 1998, he was named Executive Vice President and Chief Operating Officer for the Getty Trust. He currently serves as a Vice Chairman of the Board of Trustees of Occidental College and is a trustee of The Ahmanson Foundation, Children's Hospital of Los Angeles and the Grand Park Foundation. He advises numerous non-profit institutions on matters relating to non-profit management and building programs. His involvement was critical to the building of Walt Disney Concert Hall at The Music Center, serving on the boards of the LA Phil and Walt Disney Concert Hall, Inc.

DOUGLAS C. BAKER (*Producing Director*) is now in his 25th season at CTG. Previously, he managed Broadway and touring productions including *Tru*, *Born Yesterday*, *The Gospel at Colonus*,

Annie, *A Chorus Line*, *Working*, *The Wiz* and *Legends!*, which premiered at the Ahmanson Theatre in 1986 and starred Mary Martin and Carol Channing. Doug is a member of the Achievement Hall of Fame of Chagrin Falls Schools in Ohio and a graduate of Albion College. He is an active member of the Broadway League, the Independent Presenters Network and is a proud member of the Association of Theatrical Press Agents and Managers. In May 2013 Doug received The Broadway League's prestigious Outstanding Achievement in Presenter Management Award.

KELLEY KIRKPATRICK (*Associate Artistic Director*). Since arriving at CTG in 2005, Kelley has produced over 50 productions at the Ahmanson Theatre, Mark Taper Forum and Kirk Douglas Theatre, many of which have gone on to future lives on Broadway, off-Broadway and beyond. In addition to producing shows across CTG's three stages, he has had the privilege of collaborating with numerous local and national artists to commission and develop new works.

NAUSICA STERGIU (*General Manager, Mark Taper Forum and Kirk Douglas Theatre*) has worked professionally supporting artists in theatres of all shapes, sizes and locales including

many seasons at Center Theatre Group as General Manager and, previously, as Audience Development Director. She oversees main stage productions at the Taper and Douglas, as well as new play commissions and developmental productions through CTG's New Play Development. Nausica has taught at USC's School of Dramatic Arts, and advises and works with local not-for-profits including Daukayev Ballet Theatre and Hollywood Orchard. MFA, Yale School of Drama, and Outward Bound trekker.

GORDON DAVIDSON (*Founding Artistic Director*) led the Taper throughout its first 38 seasons, guiding over 300 productions to its stage and winning countless awards for himself and the theatre—including the Tony Award for theatrical excellence, Margo Jones Award, The Governor's Award for the Arts and a Guggenheim fellowship. *The Kentucky Cycle* and *Angels in America* (Part One) won the Pulitzer in consecutive years and, in 1994, three of the four plays nominated for the Tony Award for Best Play were from the Taper (*Angels in America* won). In 1989 Gordon took over the Ahmanson and, in 2004, he produced the inaugural season in the Kirk Douglas Theatre.

ADDITIONAL STAFF FOR GIRLFRIEND

Resident Assistant Costume Designer Lena Sands
 Resident Assistant Lighting Designer Meghan Hong
 Scenic Artist Amanda Smith
 Assistant Props Lead Eric Babb
 Prop Artisan Mara Holland
 Production Electricians Ryan Tirrell, Juan Lozano
 Follow Spot Operators Lunchbox, Eric Mitchell
 Deck Sound Matthew Collieran

CARPENTRY CREW

Richard Dunn, Bo Foxworth, Joel Fullerton, Bryce Gil, Shen Heckel, Mara McCaffray, Randy Pound, Steven Wilenkin, Tobie Windham

ELECTRICS CREW

Ramine Ameli, Teresa Esparsen, Jesse Fryery, Derek Jones, Rose Malone, Jenna Pletcher

FRONT-OF-HOUSE LEADS

Trevor Algatt, Jessica DeBruin, Jaquelyn Johnson, Elizabeth Motuapuaka, Michael Pappas, Tarah Pollock

CONCIERGES

Chase Anderson-Shaw, Bradford Barnes, Amy Buchwald, Henry Burge, Olivia Choate, Candice Clasby, Amber Espinosa-Jones, Eduardo Fernandez-Baumann, Angela Garcia, Christina Hjelm, Joan Kubicek, Eliza Laytner, Jay Lee, Victoria Longwell, Gina Manziello, Janice Motuapuaka, Nicole Naito, Fernando Ramirez, Denise Reynoso, Jesse Sharp, Jill Steele

DISCUSSION LEADERS

Ashley Brown, Stephen Lydic, Isabella Petrini, Mark Schroeder

CONCESSIONS

Abilene Gonzalez, Monica Greene, Tatiana Rene Jones

STAGE DOOR ATTENDANTS

Cory Aycock, Michael Hanson, Ian Ray

CREDITS

Costumes provided by the Center Theatre Group Costume Shop, Berkeley Repertory Theatre and Actors Theatre of Louisville Costume Shops.
 Additional staff: First Hand – Iris Marshall; Stitcher–Daniel Mahler; Dyer/Painter – Kitty Youngs. Los Angeles production photos by Craig Schwartz.

ONLINE

CenterTheatreGroup.org **#GirlfriendCTG**
 Like us on facebook **Center Theatre Group**
 Follow us on Twitter **@CTGLA**
 Subscribe on YouTube **CTGLA**
 Follow us on Instagram **@CTGLA**

SPECIAL THANKS

Maggi Yule, Kristopher Castle;
 Guitars courtesy of Lynda Hayden and Gibson Guitars.



The Actors and Stage Managers employed in this production are members of Actors' Equity Association, the Union of Professional Actors and Stage Managers of the United States. This theatre operates under an agreement between the League of Resident Theatres and Actors' Equity Association, the Union of Professional Actors and Stage Managers in the United States.



The Director and Choreographer are members of the Stage Directors and Choreographers Society, Inc., an independent national labor union.



Center Theatre Group is a member of the League of Resident Theatres (LORT), the American Arts Alliance, the Broadway League, Independent Producers' Network (IPN), LA Stage Alliance, National Alliance for Musical Theatre (NAMT) and the Theatre Communications Group (TCG).

CENTER THEATRE GROUP L.A.'s Theatre Company
 MICHAEL RITCHIE, Artistic Director STEPHEN D. ROUNTREE, Managing Director
 DOUGLAS C. BAKER, Producing Director

ARTISTIC

NEEL KELLER Associate Artistic Director
 KELLEY KIRKPATRICK Associate Artistic Director
 DIANE RODRIGUEZ Associate Artistic Director
 PIER CARLO TALENTI Director of New Play Development
 LINDSAY ALLBAUGH Associate Producer
 PATRICIA GARZA Artistic Development Program Manager
 JOY MEADS Literary Manager/Artistic Engagement Strategist
 MEG FISTER Casting Manager
 ROBIN CAMPBELL Casting Department Coordinator

DAVID ADJMI (FADIMAN), SHEILA CALLAGHAN (FADIMAN), TIM CROUCH, STEVE CUIFFO, JUSTIN ELLINGTON, QUETZAL FLORES, GINA GIONFRIDDO, MATT GOULD, DANAI GURIRA, JENNIFER HALEY, DAVID HENRY HWANG, JOE ICONIS, BRANDEN JACOBS-JENKINS, RAJIV JOSEPH, KIMBER LEE, GRIFFIN MATTHEWS, LAURAL MEADE, RICHARD MONTOYA, DAN O'BRIEN, LEE OVERTREE, WILL POWER (FADIMAN), RAINPAN 43, MARCO RAMIREZ, MATT SAX, ROGER GUENVEUR SMITH, YOUNG JEAN LEE THEATER COMPANY Commissioned Artists

JOSH ALLEN, EVELINA FERNANDEZ, DOROTHY FORTENBERRY, JC LEE, ALEX LEWIN, KIM ROSENSTOCK, KEN ROHT CTG Writers' Workshop Members

EDUCATION AND COMMUNITY PARTNERSHIPS

LESLIE K. JOHNSON Director of Education and Community Partnerships
 KATHRYN MACKENZIE Director of Department Operations
 TRACI CHO KWON Director of Arts Education Initiatives
 CAMILLE SCHENKMAN Program Manager, Next Generation Initiatives
 JESUS REYES Program Manager, Community Partnerships
 MELISSA HERNANDEZ Program Associate
 ROSEMARY MARSTON-HIGDON Program Associate
 KHANISHA FOSTER Resident Teaching Artist
 DEBRA PIVER Resident Teaching Artist

MANAGEMENT AND ADMINISTRATION

NAUSICA STERGIOU General Manager (Mark Taper Forum, Kirk Douglas Theatre)
 JEFFREY UPAH General Manager (Ahmanson Theatre)
 KATIE SOFF Asst General Manager (Mark Taper Forum, Kirk Douglas Theatre, NPD)
 TIFFANY MOON General Management Associate
 JAMES VIGGIANO Company Manager (Mark Taper Forum, Kirk Douglas Theatre)

ERIC SIMS Director of Theatre Operations (Kirk Douglas Theatre)
 TOM BURMESTER Audience Experience Design/Front of House Mgr (Kirk Douglas Theatre)
 LAUREN BAXA Assistant Performance Manager (Kirk Douglas Theatre)
 MAX OKEN Facility Assistant (Kirk Douglas Theatre)
 SONDRAL MAYER Concessions Manager (Kirk Douglas Theatre)

ALANA BEIDELMAN Executive Assistant to the Artistic Director
 EVELYN STAFFORD Executive Assistant to the Managing Director

PRODUCTION

DAWN HOLISKI Production Department Operations Director
 CHRISTY WEIKEL Production Manager (Kirk Douglas Theatre)
 CHRISTOPHER REARDON Assistant Production Manager (Kirk Douglas Theatre)
 RICHARD PETERSON Master Electrician (Kirk Douglas Theatre)
 AARON STAUBACH Light Board Programmer/Operator (Kirk Douglas Theatre)
 ADAM PHALEN Head Audio (Kirk Douglas Theatre)
 KATIE POLEBAUM Stage Supervisor (Kirk Douglas Theatre)
 CAMBRIA CHICHI Wardrobe Supervisor (Kirk Douglas Theatre)

JOE HAMLIN Technical Director/Ahmanson Production Manager
 CHAD SMITH Associate Technical Director
 SAM CRAVEN-GRIFFITHS Associate Technical Director
 SEAN KLOC Shop Foreman

ANDREW THIELS Prop Manager
 MERRIANNE NEDREBERG Associate Prop Manager
 CANDICE CAIN Costume Director
 BRENT M. BRUIN Costume Workroom Supervisor
 MADDIE KELLER Costume Generalist
 WHITNEY OPPENHEIMER Shop Assistant
 SWANTJE TUOHINO Tailor
 ELIZABETH LEONARD Production Operations Manager
 JULIO A. CUELLAR Driver/Custodian
 BO FOXWORTH, BRIAN SLATEN, TOBIE WINDHAM Drivers
 PETER WYLIE Interim Production Administrator

SHAWN ANDERSON Master Carpenter (Ahmanson Theatre)
 ANDREW W. ARNOLD Flyman (Ahmanson Theatre)
 STAN STEELMON Master Propertyman (Ahmanson Theatre)
 JIM BERGER Master Electrician (Ahmanson Theatre)
 ROBERT SMITH Master Soundman (Ahmanson Theatre)
 MICHAEL GARDNER Wardrobe Supervisor (Ahmanson Theatre)
 PATRICE K. MADRIGAL Hair and Make-up Supervisor (Ahmanson Theatre)
 CHRISTINE L. COX House Manager (Ahmanson Theatre)

JONATHAN BARLOW LEE Production Manager (Mark Taper Forum)
 KATE COLTUN Associate Production Manager (Mark Taper Forum)
 EMMET KAISER Master Carpenter (Mark Taper Forum)
 ROBERT RUBY Master Propertyman (Mark Taper Forum)
 WILLIAM MORNER Master Electrician (Mark Taper Forum)
 BONES MALONE Master Soundman (Mark Taper Forum)
 DENNIS SEETOO Wardrobe Supervisor (Mark Taper Forum)
 RICK GEYER Hair & Make-up Supervisor (Mark Taper Forum)
 LINDA WALKER House Manager (Mark Taper Forum)

FINANCE, INFORMATION SYSTEMS AND HUMAN RESOURCES

CHERYL SHEPHERD Chief Financial Officer
 SUZANNE BROWN Contoller
 JANIS BOWBEER Assistant Contoller
 XOCHITL RAMIREZ Accounts Payable Coordinator
 FELICISIMA LAPID Accounts Payable Specialist
 ALEGRIA SENA Staff Accountant
 SHYNASTY WILKES Staff Accountant
 AMEETA SHARMA Payroll Manager
 JEFF LOUIE Payroll Specialist
 STAN GRUSHESKY Director of Information Systems
 SEAN PINTO Database and Web Manager

MANDY RATLIFF DBA, Tessitura Administrator
 ASH LEWIS Help Desk Administrator
 JODY HORWITZ Director of Human Resources
 PJ. PHILLIPS Human Resources Administrator
 SINGER LEWAK, LLP Auditor
 MICHAEL C. DONALDSON, LISA A. CALLIF Legal Counsel
 GIBSON, DUNN & CRUTCHER Legal Counsel

DEVELOPMENT

YVONNE CARLSON BELL Director of Advancement
 PATRICK OWEN Deputy Director of Development
 NATALIE BERGESON Director of Donor Contributions
 JEAN KLING Director of Institutional Support
 LIZ LIN Director of Corporate Relations and Communications
 CHARITY WU Director of Individual Giving
 BECKY BIRDSONG Major Gifts Officer
 RYAN HONEY Associate Director of Special Initiatives
 KATY HILTON Grants Manager
 LAURA HITE Corporate Relations Manager
 MANDI OR Special Events Manager
 CONNOR BERGMAN Corporate Relations Associate
 JENNIFER CHAN Special Events Associate
 JUSTIN FOO Donor Contributions Associate
 DONALD JOLLY Donor Relations Associate for the Inner Circle
 JESSICA NASH Donor Contributions Supervisor
 KIM OKAMURA Institutional Giving Associate
 ALLAIN ROCHEL Development Assistant
 ERIC SEPPALA Executive Assistant to the Advancement Director
 ERIN SCHLABACH Major Gifts Coordinator

AL BERMAN, VICTOR BUNO, ELIZABETH DELLORUSSO, DAVID GARVER, JENNIFER HARRELL, KAMALA LANE, TONY LEWELLEN, HOLLY RAMOS, NICOLE SCIPIONE, BENJAMIN SCHWARTZ, PAUL VITAGLIANO Donor Advisors
 ADAM BURCH, KARLA GALVEZ Donor Services Associates
 ANNE BRUNER, MURRAY E. HELTZER, MARCI MILLER, JULIE NADAL Development Volunteers

MARKETING AND COMMUNICATIONS

KORY P. KELLY Director of Marketing and Communications
 CONSTANTINE LIGNOS Executive Assistant

NANCY HEREFORD Media and Communications Director
 PHYLLIS MORDERLY Media and Communications Associate
 JASON MARTIN Media and Communications Associate
 KRISTI AVILA Media and Communications Coordinator

DEANNA MCCLURE Art Director
 IRENE KANESHIRO Senior Design Manager
 JAVIER VASQUEZ Graphic Designer
 LOYDA GUADAMUZ Graphic Designer

CODY LASSEN Marketing Director
 ARIE LEVINE Marketing and Advertising Manager
 KIYOMI EMI Audience Development Manager
 GARRETT COLLINS Audience Loyalty Manager

JAMES SIMS Content Strategy Director
 HAL BANFIELD Multimedia Producer
 SARAH GOLDBAUM Digital Media Specialist
 SARAH ROTHBARD Content Manager
 DILLON SLAGLE Content Coordinator

TICKET SALES AND SERVICES

SHAWN ROBERTSON Ticket Sales Director
 SKYPP CABANAS Ticket Operations Manager
 RACHYL UNDERWOOD Ticket Operations Coordinator

MICHAEL ZOLDESSY Account Sales Manager
 SAVANNAH L. BARKER Account Sales Coordinator

SANDY CZUBIAK Audience and Subscriber Services Director
 JENNIFER BAKER, CHERYL HAWKER, RICHARD RAGSDALE Audience Services Supervisors
 ALICE CHEN Audience Services Asst. Supervisor
 SAM AARON, DEBORAH REED Audience Services Sales Associates

JEREMIE ARENCIBIA, VICKI BERNDT, CARLOS D. CHAVEZ, JR., PETER COLBURN, MICHAEL ESPINOZA, ANASTASHIA GARCIA, GARY HOLLAND, EILEEN PEREZ, JUSTINE PEREZ, LEX SAVKO, DANNY SCHMITZ Audience Services Representatives

DANUTA SIEMAK Subscriber Services Supervisor
 CHRISTINA GUTIERREZ Subscriber Services Asst. Supervisor
 LIGIA PISTE Subscriber Services Senior Representative
 IRENE CHUANG, PETER STALOCH Subscriber Services Representatives

SARAH K. GONTA Box Office Treasurer
 KISHISA ROSS, GISELE FRAZEUR Assistant Treasurers
 ANGELICA CARBAJAL, MICHAEL KEMPISTY, LEROY PAWLOWSKI, MICHAEL SALTZMAN, CRIS SPACCA Box Office Staff

KERRY KORF Priority Services Director
 SUSAN F. TULLER Priority Services Operations Manager
 CANDICE WALTERS Priority Services Sales Manager
 PAUL CUEN Priority Services Manager
 KRISTEN SCHRASS Priority Services Assistant Supervisor

CAROLE BAXTER, ZOE CANNER, ESTEBAN CRUZ, ASHLEY DAKIN, MAGGIE DODD, NIC DRESSEL, SOFIJA DUTCHER, MARC "BYRON" DROTMAN, SAMANTHA ELSE, LOU GEORGE, SHEP KOSTER, KEN SALLEY, BOBBI LYNN SCOTT, ANDREW SEVERYN, MICHAEL SMITH, BINOY THOMAS, DIANE WARD, JEFF WARE, JIM WATERMAN Representatives

INTERNS

OLIVIA CORDELL, ELLEN DURNAL, AMANDA ENO, ARMANDO HUIPE, SEAN KIM, CHELSEY MAUS, MORGAN ORTIZ, LYDIA PUSTELL, ROSA SOLORZANO, KACEY WILSON, SLOAN WILSON

Center Theatre Group would like to thank its exceptional staff for their ongoing commitment, dedication and extraordinary efforts.