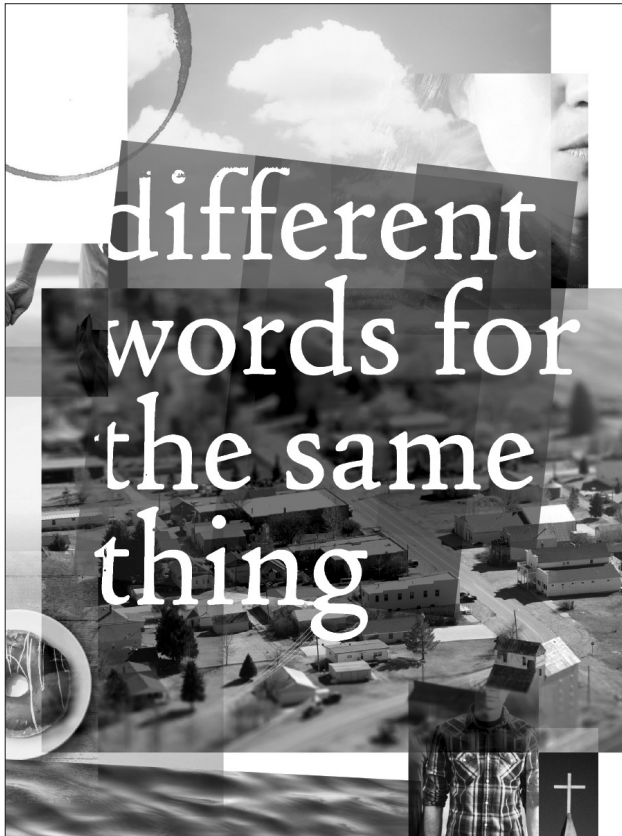


# Kirk Douglas Theatre 2013/14 Season



## DOUGLASPLUS Three Solo Shows in Repertory **St. Jude**

Written and Performed by  
Luis Alfaro  
Directed by Robert Egan  
World Premiere

## **Uncle Ho to Uncle Sam**

By Trieu Tran with Robert Egan  
Performed by Trieu Tran  
Directed by Robert Egan

## **Rodney King**

Created and Performed by  
Roger Guenveur Smith

September 14 – October 6, 2013

Part of RADAR L.A.,  
An International Festival  
of Contemporary Theater,  
presented by REDCAT and  
CalArts in association with  
Center Theatre Group

## FIRST SEASON PRODUCTION

## **The Black Suits**

Music and Lyrics by Joe Iconis  
Book by Joe Iconis and  
Robert Emmett Maddock  
Directed by John Simpkins  
World Premiere  
October 27 – November 24, 2013

## SECOND SEASON PRODUCTION Gate Theatre production of Barry McGovern in

## **I'll Go On**

By Samuel Beckett  
From *Molloy*, *Malone Dies* and  
*The Unnamable*  
Texts selected by Gerry Dukes  
and Barry McGovern  
Directed by Colm Ó Briain  
January 10 – February 9, 2014

## THIRD SEASON PRODUCTION **different words for the same thing**

By Kimber Lee  
Directed by Neel Keller  
World Premiere  
May 4 – June 1, 2014

## SEASON BONUS OPTION The Second City's

## **A Christmas Carol: Twist Your Dickens!**

By Peter Gwinn and Bobby Mort  
Directed by Marc Warzecha  
December 8 – 29, 2013

# Inspiring Our Future

---

## Special Thanks to Center Theatre Group's Most Generous Annual Patrons

Center Theatre Group wishes to thank the following donors for their significant annual gifts and for their belief in the transformative power of theatre.

\$1 MILLION AND ABOVE

Brindell Roberts Gottlieb

---

\$250,000 AND ABOVE

Center Theatre Group Affiliates  
Kirk & Anne Douglas  
The James Irvine Foundation  
The Andrew W. Mellon Foundation

---

\$150,000 AND ABOVE

Anonymous  
Bank of America  
The Blue Ribbon  
Elisabeth Katte Harris Trust  
Laura & James Rosenwald & Orinoco Foundation  
Jeanette Shammass  
The Shubert Foundation, Inc.  
Wells Fargo Foundation

---

\$100,000 AND ABOVE

Ann & Stephen F. Hinchliffe, Jr.  
Los Angeles County Arts Commission  
JPMorgan Chase & Co.  
Deidra Norman Schumann  
Eva & Marc Stern

---

\$75,000 AND ABOVE

William Randolph Hearst Foundation  
The Ralph M. Parsons Foundation  
Lloyd E. Rigler — Lawrence E. Deutsch Foundation

---

This list includes gifts made to Center Theatre Group  
between February 16, 2013, and April 16, 2014.



Center Theatre Group  
L.A.'s Theatre Company

Ahmanson Theatre  
Mark Taper Forum  
Kirk Douglas Theatre

**Michael Ritchie**, ARTISTIC DIRECTOR **Edward L. Rada**, MANAGING DIRECTOR  
**Gordon Davidson**, FOUNDING ARTISTIC DIRECTOR

presents

the World Premiere of

# different words for the same thing

BY

**Kimber Lee**

WITH

**Sam Anderson, Jackie Chung, Stephen Ellis, Monica Horan, Devin Kelley,  
Rebecca Larsen, Savannah Lathem, Erick Lopez, Malcolm Madera,  
Alyson Reed, Hector Atreyu Ruiz, José Zuniga**

SCENIC DESIGNER

**Sarah Krainin**

COSTUME DESIGNER

**Candice Cain**

LIGHTING DESIGNER

**Geoff Korf**

COMPOSER/SOUND DESIGNER

**Paul James Prendergast**

CASTING

**Heidi Levitt, CSA**

DRAMATURG

**Pier Carlo Talenti**

PRODUCTION STAGE MANAGER

**Kirsten Parker**

CTG PRODUCING ASSOCIATE

**Lindsay Allbaugh**

DIRECTED BY

**Neel Keller**

May 4 – June 1, 2014  
Kirk Douglas Theatre

The Los Angeles production of *different words for the same thing* is generously supported in part by  
Artistic Director's Circle member **Timothy A. Regler**.

---

Please turn off all electronic devices such as cellular phones, PDAs, beepers and watch alarms. The use of any recording device, either audio or video, and the taking of photographs, with or without flash, is strictly prohibited.

**CAST**  
(in order of appearance)

Alice .....	<b>Jackie Chung</b>
Marta .....	<b>Alyson Reed</b>
Henry .....	<b>Sam Anderson</b>
Oren .....	<b>Stephen Ellis</b>
Sylvie .....	<b>Savannah Lathem</b>
Angel .....	<b>Hector Atreyu Ruiz</b>
Maddy .....	<b>Devin Kelley</b>
Dottie .....	<b>Monica Horan</b>
Frankie .....	<b>Erick Lopez</b>
Father Joe .....	<b>José Zuniga</b>
Donna Ruth .....	<b>Rebecca Larsen</b>
Mike .....	<b>Malcolm Madera</b>

“Come Thou Fount of Every Blessing,” trad. Hymn, arranged and performed by Annie Cleveland,  
recorded in the First Church of the Nazarene, Nampa, ID

STAGE MANAGER

**Brooke Baldwin**

TIME/PLACE

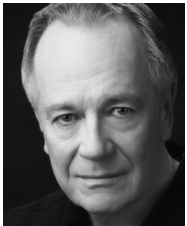
late summer

a large city and

various locations in the town of Nampa, Idaho

*different words for the same thing* is performed without an intermission.

## Who's Who



**SAM ANDERSON**

(*Henry*). Theatre: *Blackbird* (LADCC Award) at the Rogue Machine; *Napoli Millionaria* (Ovation Award), *Madagascar* and *The Bird and Mr.*

*Banks* (LADCC Award) at The Road Theatre Co., where Sam is Artistic Director, working out of two theatres in North Hollywood. His direction of Road productions includes Theresa Rebeck's *The Water's Edge* and *The Different Shades of Hugh*. His lengthy TV and film career includes *Lost*, *Justified*, *Forrest Gump*, *La Bamba*, and many others. He teaches a professional scene study/audition/improv class, is a composer of musicals and scores for plays, and in his spare time, writes. Member of Mystery Writers of America. Most proud of his 21-year-old twins, both theatre majors.



**JACKIE CHUNG**

(*Alice*) is making her Center Theatre Group debut. Regional Theatre: *brownsville song (b-side for tray)* (Actors Theatre of Louisville's Humana

Festival), *Fast Company* (South Coast Repertory) and *Macbeth 1969* (Long Wharf Theatre). Off-Broadway: *microcrisis* and *The Children of Vonderly* (Ma-Yi Theater Company), *You For Me For You* (Woolly Mammoth/Ma-Yi), *Mother Courage and Her Children* (The Public Theater/New York Shakespeare Festival), *Trickle* and *Japanoir* (Ensemble Studio Theatre), *After*. (Partial Comfort Productions), *The Director* (The Flea). Film/Television/Web Credits: *Someone Else*, *Going Local*, *Pretty Precious Unicorns* and *Fortune Son*. Additional Credits: Chung participated in the 2013 Sundance Theatre Lab, Pacific Playwrights Festival and Ojai Playwrights Festival.



**STEPHEN ELLIS**

(*Oren*). Off-Broadway: *Thinner Than Water* (LAByrinth, director Mimi O'Donnell), *The Coward* (Lincoln Center Theater,

director Sam Gold), *Dance Dance Revolution* (director Alex Timbers). Numerous readings and workshops at Ensemble Studio Theatre, LAByrinth, MCC, NYTW, Ars Nova, The Lark, McCarter Theatre and several summers at the Eugene O'Neill Playwrights Conference. Film and TV: *Delivery Man* (DreamWorks

with Vince Vaughn); *As You Like It*; *Thank You, Tommy Feinstein*; *Mr. Box Office*. Graduate of Kenyon College (Paul Newman Award) and The National Theater Institute.



**MONICA HORAN**

(*Dottie*). Best known as Amy MacDougal on the Emmy-winning sitcom *Everybody Loves Raymond*, for which she won the 2006

Gracie Award for Outstanding Supporting Actress – Comedy Series. Stage: Off-Broadway production of the cult classic *Vampire Lesbians of Sodom* with Charles Bush (also L.A. production); *B.F.'s*, with the beloved Judy Toll, directed by husband and *Everybody Loves Raymond* creator, Phil Rosenthal. TV: *Enlightened*, *Hot in Cleveland*, *The Whole Truth*. Founder: the Flourish Foundation, the Rosenthal Family Foundation – determined to help LAUSD provide substantive Arts Education for all students. ART IS CORE! Love to Ben and Lily. Thanks to Heidi and Jeannie.

**DEVIN KELLEY**

(*Maddy*) hails from Minnesota where she was born and raised. She has a degree in theatre from the University of Southern California.

Upon graduation, Kelley was accepted into the Williamstown Theatre Festival's training program and was soon cast as a series regular in Fox's *The Chicago Code*, created by Shawn Ryan. Kelley had a leading role in the Warner Bros. feature *Chernobyl Diaries*, has recurred on USA's *Covert Affairs* and recently wrapped leading roles in the independent features *Anchors* and *Turtle Island*. She currently stars in the new drama series *Resurrection* on ABC.

**REBECCA LARSEN**

(*Donna Ruth*).

Rebecca is honored to be a part of the world premiere of *different words for the same thing* with CTG at the Kirk Douglas

Theatre. Rebecca was a pre-med student before transferring into the Actor Training Program at the University of Utah. Larsen is on the artistic committee and co-curates the New Works Development program at Sacred Fools Theater in Hollywood. She also writes and directs sketch comedy and sings in a jazz trio. L.A. theatre includes *Watson*, *La Bête* (Sacred Fools). Television credits include *Masters of Sex*, *The Exes*, *House M.D.*

**SAVANNAH**

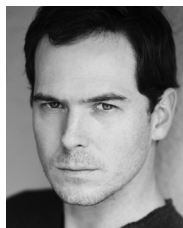
**LATHEM** (*Sylvie*) has been acting in film and TV since 2009 when she played young Rachel Carlson on *Lost*. Her most recent film, *California*

*Solo*, premiered at the 2012 Sundance Film Festival to rave reviews, and Savannah won the 2013 Young Artist Award for Best Performance in a Supporting Role. Other credits include *Moneyball* on the big screen and *I Didn't Do It* and *Criminal Minds* on television. Savannah is from Hoover, Alabama, and recently got her driver's license. She is thrilled to be making her Los Angeles stage debut at the Kirk Douglas Theatre in *different words for the same thing*.

**ERICK LOPEZ**

(*Frankie*) can be seen on MTV's *Faking It* playing the role of Tommy. Recent credits include *Switched At Birth* (ABC Family),

*Surviving Jack* (Fox), *Bold and the Beautiful* (CBS), *Vampire Diaries* (CW) and *Matador* (El Rey Network). Raised in Dallas, Texas, he attended the University of Texas at Dallas as an ATEC major (Arts and Technology). He continues to write and shoot projects in his free time. To Mom, Dad, my big sis Stephany and my lil bro Christopher...love you guys and thanks for all the support! Go Cowboys and Mavericks!

**MALCOLM MADERA**

(*Mike*). NYC Theatre: *The Mnemonist of Dutchess County* (Theatre Row), *Derby Day* (Camisade), *The Tenant* (Woodshed Collective), *Al's*

*Business Cards* (Theatre Row), *The Pied Pipers of the Lower East Side* (The Amoralists), *Dance Lessons* (Samuel French Festival Winner), *Somewhere In The Pacific* (PTP, The Atlantic Stage 2) and *I.E. In Other Words* (The Flea). Malcolm was most recently seen opposite Kevin Spacey on the Netflix original series *House of Cards* as Corporal Augustus Elijah Underwood. Other TV: *Boardwalk Empire* (HBO) and *Taxi Brooklyn* (TVFR). While training at the Drama Studio London, Malcolm had the privilege of performing at the historic Old Vic in the Old Vic New Voices 24 Hour Plays. MalcolmMadera.com.

**ALYSON REED**

(*Marta*) has worked with Hal Prince, Bob Fosse, Michael Bennett, Alan Jay Lerner and Michael Kidd. Broadway: *Dancin'*, *Oh Brother!*,

*Dance a Little Closer*, *Marilyn: An American Fable* (Marilyn-Drama Desk nomination), *Cabaret* (Sally Bowles-Tony/Helen Hayes nominations), *A Grand Night for Singing*. National Tour: *Pippin* (Catherine), *A Chorus Line* (Cassie/Val) and *A Few Good Men* (Joanne Galloway). Television: *Mad Men*, *Modern Family*, *Grey's Anatomy*, *Bones*, *CSI*, *The Mentalist*, among others. Film: Disney's *High School Musical* franchise (Ms. Darbus), *A Chorus Line* (Cassie), *Skin Deep*, *Shop Girl* and *Manhattan Merengue*.

**HECTOR ATREYU**

**RUIZ** (*Angel*) is humbled and grateful to make his Kirk Douglas Theatre debut in such a touching story – *different words for the*

*same thing*. He is a cum laude graduate of the USC School of Theatre, where he received the Jack Nicholson Award for outstanding actor. His film appearances include *The Dark Knight Rises* and *Death Sentence* alongside Kevin Bacon; he's currently recurring in television's new hit drama *Gang Related*. Hector's recent performance in the independent feature *Avenues* is receiving nationwide critical acclaim. Coming home to his two dogs, Sandy and Lilo, is his favorite part of the day.

**JOSÉ ZUNIGA**

(*Father Joe*). José, a native New Yorker, has appeared in numerous films and TV series over his career including the feature films *Twilight*,

*Next*, *Con Air* and *Mission Impossible 3*. He began with Frank Marshall's *Alive* and then went on to independent films such as *Crooklyn*, *Smoke* and Brad Anderson's *Next Stop, Wonderland*. Most recently, José starred opposite Halle Berry in the box office hit *The Call* and is currently working on the new television series *Taxi: Brooklyn South* in New York. Theatre credits include Yale Rep, EST and productions with the Malaparte Theater Co. in NYC.

**KIMBER LEE** (*Playwright*). Kimber Lee's plays include *different words for the same thing*, *fight*, *tokyo fish story* and *brownsville song (b-side for tray)*, which recently received a world premiere at the 2014 Humana Festival. Her work has also been presented by the Lark Play Development Center, Page 73, Hedgebrook, Seven Devils, Bay Area Playwrights Festival, Hansberry Project at ACT/Seattle and Dramatists Guild Fellows Program. Kimber is a Lark Playwrights Workshop Fellow (2013-2014), a member of Ma-Yi Writers Lab, and is currently working on commissions for Lincoln Center Theater/LCT3 and South Coast Rep. Recipient of the 2014 Ruby Prize and the 2013-2014 PoNY Fellowship. MFA: UT Austin.

**NEEL KELLER** (*Director and CTG Associate Artistic Director*). For CTG Neel has directed the world premieres of Jennifer Haley's *The Nether* and Jessica Goldberg's *Good Thing*, the American premiere of

David Greig's *Pyrenees*, *Stones in His Pockets* and many readings and workshops for CTG's varied new play development initiatives. Other favorite directing assignments include the world premieres of Howard Gould's *Diva* and Tom Babe's *Downed American*, the American premiere of David Greig's *The Cosmonaut's Last Message to the Woman He Once Loved in the Former Soviet Union* and *A Midsummer Night's Dream*, set in a field, the thought of which still makes him smile. Neel has also served as Artistic Director of Chicago's Remains Theatre, Associate Artistic Director at La Jolla Playhouse and was on the staffs of Williamstown Theatre Festival, Lincoln Center Theater, the American National Theatre and Jerome Robbins' Broadway.

**SARAH KRAININ** (*Scenic Designer*) is a scenic designer and object artist who began her career as props artisan for director Richard Foreman. Recent Los Angeles: *Clouded Sulphur* by Erik Ehn (Radar L.A. 2013), *Our Class* (Son of Semele Ensemble, LADCC Best Production), *Flowers for Algernon* (Deaf West), *Eternal Thou* (Atwater Village Theatre, South Coast Rep Studio), *Invisible Cities* at Union Station (properties design). Other Theatre: *Grotesque Playground Injuries* by Rajiv Joseph (Boise Contemporary Theater), multiple productions at FringeNYC and HERE Arts Center, and puppet design for director Torry Bend's original shows exploring the human relationship to landscape and cityscape. A graduate of Wesleyan University and CalArts, Sarah is currently Props Associate here at CTG. [www.SarahKrainin.com](http://www.SarahKrainin.com).

**CANDICE CAIN** (*Costume Designer*). CTG: 20 years – Costume Shop Director; Design – Taper: *Blade to the Heat*, *Tongue of a Bird*, *Dealer's Choice*, *Body of Bourne*, *Enigma Variations*, *Neat*, *Mules*, *Stuff Happens*, *13*, *Nightingale*, *Stones in His Pockets*, *Living Out*; P.L.A.Y. – *Bocon!*, *Black Butterfly*, *The Square Root of Terrible*; KDT – *Solomania*, *Juan & John*, Solo Shows/Radar L.A. Other Theatres: South Coast Rep, Oregon Shakespeare Festival, N.Y. Public Theater, Manhattan Theatre Club, Berkeley Rep, Geffen Playhouse, Evidence Room and over 50 productions as Resident Designer at Virginia Stage Co. including *Macbeth*, *Les Liaisons Dangereuses*, *The Tempest*, *Arms and the Man*, *Cat on a Hot Tin Roof*.

**GEOFF KORF** (*Lighting Designer*) has designed lighting for about 300 productions over the past 30 years. His work has been seen on Broadway, at the Mark Taper Forum, the Geffen Playhouse, La Jolla Playhouse, South Coast Repertory, Seattle Repertory, Oregon Shakespeare

Festival, Actors Theatre of Louisville, Trinity Repertory, the Guthrie Theater, The Goodman, Long Beach Opera, San Francisco Opera and in many other venues. He is a member of the ensemble of Cornerstone Theater. Geoff also serves as the Head of Design at the University of Washington, Seattle. He is a graduate of California State University, Chico, and the Yale School of Drama.

**PAUL JAMES PRENDERGAST** (*Composer/ Sound Designer*). Center Theatre Group: *Palestine*, *New Mexico*; *Water & Power*; *Electricidad*; *The Stones* and others. Broadway: *All The Way*. Regional: Oregon Shakespeare, Guthrie, Seattle Rep, South Coast Rep, Long Wharf, Great Lakes Theater, Florida Stage, Atlantic Theater Company, Geffen Playhouse, The Actors' Gang, Cornerstone, Hartford Stage, Cal Shakes, Alley Theatre, Kennedy Center for the Performing Arts and others. Theme parks include Universal Studios and Knott's Berry Farm; casinos include Treasure Island, MGM Grand; museums include J. Paul Getty, Geffen Contemporary and the Autry National Center; dance companies include Diavolo Dance Theater, Momix, Parsons Dance. His work as a singer/songwriter has appeared in films, on recordings and in music venues nationwide.

**HEIDI LEVITT**, CSA (*Casting Director*) is a graduate of Barnard College and AFI where she now is an adjunct professor. Film credits include *The Artist*, *JFK*, *The Joy Luck Club*, *Natural Born Killers*, *The Rock* and the recently released *Cesar Chavez*. Currently, she is casting *Vernon God Little* for Werner Herzog and producing the series *Exiles on Main Street* with Oscar winning documentarian, Alex Gibney. Heidi is thrilled to be casting again for theatre and working with director Neel Keller. Theatre casting credits include *Wrecks* (Public Theater), *Raindance* (Signature Theatre) and several seasons at both ACT Seattle and La Jolla Playhouse. Heidi is the creator of the iTunes-featured App Actor Genie.

**PIER CARLO TALENTI** (*Dramaturg*). Pier Carlo Talenti is resident dramaturg/literary manager at Center Theatre Group, where he has developed scores of plays and musicals by such talents as Julia Cho, Lisa Kron and Michael Friedman. He is currently overseeing the development of 15 new plays and musicals, all commissioned by CTG (including work by Dael Orlandersmith, Marco Ramirez and Danaï Gurira). He has served as production dramaturg on many CTG productions, including *Bengal Tiger at the Baghdad Zoo* by Rajiv Joseph (director Moisés Kaufman) and *The Nether* by Jennifer Haley (director Neel Keller).

**KIRSTEN PARKER** (*Production Stage Manager*). Center Theatre Group: *I'll Go On* (Gate Theatre Production), *A Christmas Carol: Twist Your Dickens!* (world premiere and re-loaded production), *Neva* (co-production with South Coast Rep and La Jolla Playhouse), *The Nether*, *Jomama Jones: Radiate* (KDT workshop), *The Massoud Project* (Taper workshop). Off-Broadway: *Food and Fadwa* (New York Theatre Workshop, ASM), *Five Second Chances* and *Icarus Burns* (Playwrights Realm, readings). Regional: *Romeo and Juliet* (Northern Stage), *Romeo and Juliet* (Yale Repertory Theatre), *The Servant of Two Masters* (Yale Rep, ASM). Other New York Credits: *Break* (N.Y. Fringe Festival), *Her Lightness* (Yale Rep, Workshop), *69°S: The Shackleton Project* (Phantom Limb, Workshop). Ojai Playwrights Conference '13 & '14 (Company Manager). MFA: Yale School of Drama.

**BROOKE BALDWIN** (*Stage Manager*). Center Theatre Group: *The Nether*, *The Convert*, Second City's *A Christmas Carol: Twist Your Dickens*, *Venice*, *Burn This*, *The Night Watcher*, *Waiting for Godot*. Cabrillo Music Theatre: *In The Heights*; *Kiss Me, Kate*. Moonlight Stage Productions: *The Wizard of Oz*, *The Most Happy Fella*, *Cats*, *The Foreigner* and *Swingtime Canteen*. Kaiser Permanente Educational Theatre: *What Goes Around*. Geffen Playhouse: *Shipwrecked!*, *Time Stands Still*, *Through The Night and Love*, *Loss and What I Wore*. Reprise!: *I Love My Wife*. UCLA: *The Greeks*, *Cleansed*, *Homer in Cyberspace*, *Big Love* and *Anything Goes*.

#### FOR CENTER THEATRE GROUP

**MICHAEL RITCHIE** (*Artistic Director*) is in his ninth season as Center Theatre Group's Artistic Director, and has led over 170 productions to the Ahmanson, Taper and Douglas stages since his arrival in 2005. From 1996 to 2004 Michael was the Producer of the Williamstown Theatre Festival and prior to that he was a Production Stage Manager in NYC. At CTG, he premiered six musicals that moved to Broadway — *The Drowsy Chaperone* (which won 13 Tony Award nominations), *Curtains* (eight Tony nominations), *13, 9 to 5: The Musical*, *Bloody Bloody Andrew Jackson* and *Leap of Faith*. He has produced 39 world premieres including the musicals *Minsky's*, *Venice* and *Sleeping Beauty Wakes*, and the plays *Bengal Tiger at the Baghdad Zoo* (a Pulitzer Prize finalist that also moved to Broadway), *Water & Power* and *Yellow Face*, and he presented a broad range of plays and musicals ranging from *Dead End to The Black Rider* to *Edward Scissorhands* to blockbusters such as *God of Carnage*, *Mary Poppins*, *Jersey Boys* and *August: Osage*

County. In addition, Michael inaugurated CTG's New Play Production Program, designed to foster the development and production of new work.

**EDWARD L. RADA** (*Managing Director*) returned to Center Theatre Group in 2011 after previously serving as CTG's Chief Financial Officer for 12 years (1996–2008). Rada spent three years (2008–2011) as President of the Music Center Foundation, a non-profit corporation that holds and invests the endowment and reserve funds for the Music Center and its resident companies (including CTG). Prior to his years at CTG, he was the Director of Finance at The Old Globe in San Diego and principal of Rada & Associates, an accounting firm that specialized in entertainment-related non-profit organizations and theatrical productions. He is a graduate of Occidental College in Los Angeles with numerous post-graduate coursework and credentials. He currently serves on the board of directors for Entertainment Industry Foundation, Theatre @ Boston Court, and United Support of Artists for Africa/USA for Africa, among other affiliations. He also serves on the board of trustees for the pension, health and welfare and 401(k) plans of I.A.T.S.E. Local 33 Stagehands Union.

**DOUGLAS C. BAKER** (*Producing Director*) is now in his 24th season at CTG. Previously, he managed Broadway and touring productions including *Tru*, *Born Yesterday*, *The Gospel at Colonus*, *Annie*, *A Chorus Line*, *Working*, *The Wiz*,

and *Legends!*, which premiered at the Ahmanson Theatre in 1986 and starred Mary Martin and Carol Channing. Doug is a member of the Achievement Hall of Fame of Chagrin Falls Schools in Ohio and a graduate of Albion College. He is an active member of the Broadway League, the Independent Presenters Network and is a proud member of the Association of Theatrical Press Agents and Managers. In May 2013 Doug received The Broadway League's prestigious Outstanding Achievement in Presenter Management Award.

**NAUSICA STERGIU** (*General Manager, Mark Taper Forum and Kirk Douglas Theatre*) has worked professionally supporting artists in theatres of all shapes, sizes and locales including many seasons at Center Theatre Group as General Manager and, previously, as Audience Development Director. She oversees main stage productions at the Taper and Douglas, as well as new play commissions and developmental productions through CTG's New Play Development. Nausica has taught at USC's School of Dramatic Arts, and advises and works with local not-for-profits including Daukayev Ballet Theatre and Hollywood Orchard. MFA, Yale School of Drama and Outward Bound trekker.

**LINDSAY ALLBAUGH** (*Producing Associate*) is a member of Center Theatre Group's artistic staff and has served in varying capacities for the past 10 years. Lindsay also serves as the artistic coordinator

for CTG's Sherwood Award, which supports emerging Los Angeles artists. In addition to her work for CTG, Lindsay is the co-artistic director at the Elephant Theatre Company in Hollywood. Selected producing credits include *The Steward of Christendom* at the Taper, *The Nether* at the KDT and *Waiting for Godot* at the Taper. Directing credits include the West Coast premieres of *100 Saints You Should Know* and *Never Tell* (Elephant), the world premiere of *Revelation* (Elephant), *Supernova* (Elephant) and *Kate Crackernuts*, *Gray City*, *Aloha Say the Pretty Girls* (Harvard/ART).

**GORDON DAVIDSON** (*Founding Artistic Director*) led the Taper throughout its first 38 seasons, guiding over 300 productions to its stage and winning countless awards for himself and the theatre — including the Tony Award® for theatrical excellence, Margo Jones Award, The Governor's Award for the Arts and a Guggenheim fellowship. *The Kentucky Cycle* and *Angels in America* (Part One) won the Pulitzer in consecutive years and, in 1994, three of the four plays nominated for the Tony Award® for Best Play were from the Taper (*Angels in America* won). In 1989 Gordon took over the Ahmanson and, in 2004, he produced the inaugural season in the Kirk Douglas Theatre.

The playwright would like to dedicate her work on this production to her big brother Bill.

**ADDITIONAL STAFF FOR DIFFERENT WORDS FOR THE SAME THING**

Assistant Costume Designer . . . . . Bich Vu  
 Assistant Lighting Designer . . . . . Robert J. Aguilar  
 Casting Associate . . . . . Lauren Fernandes  
 Deck Crew . . . . . Ryan Tirrell  
 Production Electricians . . . . . Juan Lozano, Lunchbox  
 Wardrobe Supervisor . . . . . Cambria Chichi  
 Wardrobe Crew . . . . . Agnes Ingram  
 Prop Artisans . . . . . Zach Istrin and Donovan Martinelli  
 Prop Intern . . . . . Erica Ochoa  
 Scenic Artist . . . . . Katie Polebaum

**CARPENTRY CREW**

Eric Adams, Victor Cobos, Cate Cundiff,  
 Samantha Else, Bo Foxworth, James Jonson,  
 Sean Kloc, David Patrick, Katie Polebaum.

**ELECTRICS CREW**

Veronica Acosta, Eric Baum, Randy Bosh,  
 Jenn Burkhardt, Evan Drane, Juan Lozano,  
 Lunchbox, David "Elmo" Martin, Jenna Pletcher,  
 Aaron Staubach, Boston Stergis, Ryan Tirrell.

**CONCIERGES**

Trevor Algatt, Jane Bacon, Ashley Brown,  
 Lia Chapman, Olivia Choate, Shomari Cleveland,  
 Jessica DeBruin, Joan Kubicek, Gina Manziello,  
 Janice Motuapuaka, Isabella Petrini,  
 Martin Roman-Figueroa.

**USHERS**

Amy Buchwald, Marilyn DePaula,  
 Angela Garcia, Britt Keller, Erin Mulvey,  
 Nicole Naito, Denise Reynoso, Jill Steele.

**CONCESSIONS**

Abilene Gonzalez, Monica Greene,  
 Tatiana Jones.

**STAGE DOOR ATTENDANTS**

Cory Aycock, Bonita Carter,  
 Christopher Nucho, Ian Ray.

**POST-SHOW FACILITATORS**

Christina Hjelm, Stephen Lydic, Tiffany Moon.

**CREDITS**

Costumes provided by the Center Theatre Group  
 Costume Shop and additional staff:  
 Shop Assistant – Whitney Oppenheimer;  
 First Hands – Camilla Hansen, Lydia Harmon.  
 Rehearsal and production photography by  
 Craig Schwartz. Organ music recorded by  
 Randy McKellip.

**SPECIAL THANKS**

Eugene Cho, Doug and Annie Cleveland,  
 Sherrie Cuttlers, John Hazlewood,  
 Theodore Hovey, Emil Iliev, Thomas Kail.

**ONLINE**

CenterTheatreGroup.org  
**#DiffWordsPlay**  
 Like us on facebook **Center Theatre Group**  
 Follow us on Twitter **@CTGLA**  
 Subscribe on YouTube **CTGLA**  
 Follow us on Instagram **@CTGLA**



Center Theatre Group is a member of the American Arts Alliance, the Broadway League, Independent Producers' Network (IPN), LA Stage Alliance, League of Resident Theatres (LORT), National Alliance for Musical Theatre (NAMT) and the Theatre Communications Group (TCG).



The Actors and Stage Managers employed in this production are members of Actors' Equity Association, the Union of Professional Actors and Stage Managers of the United States.



The Director is a member of the Society of Stage Directors and Choreographers, Inc., an independent national labor union.

# CENTER THEATRE GROUP L.A.'s Theatre Company

MICHAEL RITCHIE, Artistic Director    EDWARD L. RADA, Managing Director  
DOUGLAS C. BAKER, Producing Director

## ARTISTIC

NEEL KELLER ..... Associate Artistic Director  
KELLEY KIRKPATRICK ..... Associate Artistic Director  
DIANE RODRIGUEZ ..... Associate Producer/Director of New Play Production  
PIER CARLO TALENTI ..... Resident Dramaturg/Literary Manager  
LINDSAY ALLBAUGH ..... Producing Associate  
JOY MEADS ..... Literary Associate and Artistic Engagement Strategist  
MARK B. SIMON ..... Casting Director  
STEVEN PIESZCHALSKI ..... Casting Assistant

DAVID ADJMI (FADIMAN), JESSICA BLANK, SHEILA CALLAGHAN (FADIMAN), TIM CROUCH, JUSTIN ELLINGTON, GINA GIONFRIDDO, GOB SQUAD, MATT GOULD, DANAI CURIRA, JENNIFER HALEY, JOE HORTUA, ERIK JENSEN, RAJIV JOSEPH, LATINO THEATER COMPANY, GRIFFIN MATTHEWS, LAURAL MEADE, JULIE MARIE MYATT (FADIMAN), DAN O'BRIEN, EVANGELINE ORDAZ, DAEL ORLANDERSMITH, WILL POWER (FADIMAN), RAINPAN 43, MARCO RAMIREZ, MATT SAX, YOUNG JEAN LEE THEATER COMPANY ..... Commissioned Artists

BEKAH BRUNSTETTER, CARLA CHING, JASON GROTE, SARAH GUBBINS, TIM McNEIL, HENRY ONG, MADHURI SHEKAR ..... CTG Writers' Workshop Members

## EDUCATION AND COMMUNITY PARTNERSHIPS

LESLIE K. JOHNSON ..... Director of Education and Community Partnerships  
PATRICIA GARZA ..... Assistant Department Director  
TRACI CHO KWON ..... Director of School Partnerships  
CAMILLE SCHENKMAN ..... Program Manager, Emerging Artists and Arts Professionals  
JESUS REYES ..... Program Manager, Community Partnerships  
KATRINA FRYE ..... Program Associate  
NIJEUL PORTER ..... Temporary Program Associate  
KELLY CHRIST ..... Communications Coordinator  
ASHLEY LAMPSON OPSTAD ..... Project Coordinator  
SHANNON WINSTON ..... Department Coordinator  
DEBRA PIVER ..... Resident Teaching Artist

## MANAGEMENT AND ADMINISTRATION

NAUSICCA STERGIOU ..... General Manager (Mark Taper Forum, Kirk Douglas Theatre)  
JEFFREY UPAH ..... General Manager (Ahmanson Theatre)  
SUZANNE HEE MAYBERRY ..... Assistant General Manager (Mark Taper Forum)  
KATIE BRUNER SOFF ..... Assistant General Manager (Kirk Douglas Theatre, NPP)  
ALANA BEIDELMAN ..... Executive Assistant to Managing Director  
PATRICK BELL ..... General Management Associate  
EMIKA ABE ..... Yale School of Drama Fellow

ERIC SIMS ..... Operations Manager (Kirk Douglas Theatre)  
TOM BURMESTER ..... Audience Experience Design/Front of House Mgr (Kirk Douglas Theatre)  
LAUREN BAXA ..... Assistant Performance Manager (Kirk Douglas Theatre)  
MAX OKEN ..... Facility Assistant (Kirk Douglas Theatre)  
SONDRA MAYER ..... Concessions Manager (Kirk Douglas Theatre)

## PRODUCTION

DAWN HOLISKI ..... Production Department Operations Director  
CHRISTY WEIKEL ..... Production Manager (Kirk Douglas Theatre)  
KATE COLTUN ..... Assistant Production Manager (Kirk Douglas Theatre)  
RICHARD PETERSON ..... Master Electrician (Kirk Douglas Theatre)  
AARON STAUBACH ..... Light Board Programmer/Operator (Kirk Douglas Theatre)  
ADAM PHALEN ..... Head Audio (Kirk Douglas Theatre)  
VICTOR COBOS ..... Stage Supervisor (Kirk Douglas Theatre)

JOE HAMLIN ..... Technical Director/Ahmanson Production Manager  
CHAD SMITH ..... Associate Technical Director  
SAM CRAVEN-GRIFFITHS ..... Associate Technical Director

ANDREW THIELS ..... Prop Manager  
MERRIANNE NEDREBERG ..... Associate Prop Manager  
SARAH KRAININ ..... Prop Associate  
CANDICE CAIN ..... Costume Director  
BRENT M. BRUIN ..... Costume Workroom Supervisor  
MADDIE KELLER ..... Costume Generalist  
SWANTJE TUOHINO ..... Tailor  
ELIZABETH LEONARD ..... Production Operations Manager  
JULIO A. CUELLAR ..... Driver/Custodian  
DONAVAN MARTINELLI, EUGENE A. MONTEIRO II, BRIAN SLATEN ..... Drivers  
JENNIFER ACHTERBERG ..... Production Administrator

SHAWN ANDERSON ..... Master Carpenter (Ahmanson Theatre)  
ANDREW W. ARNOLD ..... Flyman (Ahmanson Theatre)  
STAN STEELMON ..... Master Propertyman (Ahmanson Theatre)  
JIM BERGER ..... Master Electrician (Ahmanson Theatre)  
ROBERT SMITH ..... Master Soundman (Ahmanson Theatre)  
MICHAEL GARDNER ..... Wardrobe Supervisor (Ahmanson Theatre)  
PATRICE MIRANDA ..... Hair and Make-up Supervisor (Ahmanson Theatre)  
CHRISTINE L. COX ..... House Manager (Ahmanson Theatre)

JONATHAN BARLOW LEE ..... Production Manager (Mark Taper Forum)  
CELESTE SANTAMASSINO ..... Associate Production Manager (Mark Taper Forum)  
EMMET KAISER ..... Master Carpenter (Mark Taper Forum)  
ROBERT RUBY ..... Master Propertyman (Mark Taper Forum)  
WILLIAM MORNER ..... Master Electrician (Mark Taper Forum)  
BONES MALONE ..... Master Soundman (Mark Taper Forum)  
DENNIS SEETOO ..... Wardrobe Supervisor (Mark Taper Forum)  
RICK GEYER ..... Hair & Make-up Supervisor (Mark Taper Forum)  
LINDA WALKER ..... House Manager (Mark Taper Forum)

## FINANCE, INFORMATION SYSTEMS AND HUMAN RESOURCES

MICHAEL F. THOMPSON ..... Chief Financial Officer  
MELODY MATTOS ..... Controller  
JANIS BOWBER ..... Assistant Controller  
FELICISIMA LAPID ..... Accounts Payable Specialist  
DANNY LAMPSON ..... Senior Staff Accountant  
ALEGRIA SENA ..... Staff Accountant  
YUEN KI "ANNIE" LAW ..... Payroll Manager  
AMEETA SHARMA ..... Payroll Specialist

DAVE ALTON ..... Chief Information Officer  
STAN GRUSHESKY ..... Director of Information Systems  
SEAN PINTO ..... Database and Web Manager  
MANDY RATLIFF ..... TESSITURA Administrator  
JARED WATANABE ..... Information Systems Analyst

JODY HORWITZ ..... Director of Human Resources  
MADRID FLEEK ..... Senior Human Resources Generalist  
SINGER LEWAK, LLP ..... Auditor  
MICHAEL C. DONALDSON, LISA A. CALLIF ..... Legal Counsel  
GIBSON, DUNN & CRUTCHER ..... Legal Counsel

## DEVELOPMENT

YVONNE CARLSON BELL ..... Director of Development  
PATRICK OWEN ..... Deputy Director of Development  
NATALIE BERGESON ..... Director of Donor Contributions  
JEAN KLING ..... Director of Institutional Support  
LIZ LIN ..... Director of Corporate Relations and Communications  
CHARITY WU ..... Director of Individual Giving  
BECKY BIRDSONG ..... Major Gifts Officer  
JAMIE CATALDO ..... Corporate Relations Manager  
MANDI OR ..... Special Events Manager  
ERIC BROWN ..... Communications Coordinator  
JENNIFER CHAN ..... Special Events Associate  
JUSTIN FOO ..... Donor Contributions Associate  
SARAH HARBURG-PETRICH ..... Development Assistant  
KATY HILTON ..... Grant Writer  
DONALD JOLLY ..... Donor Relations Associate for the Inner Circle  
KRISTEN LEVY-VAUGHAN ..... Individual Giving Assistant  
JESSICA NASH ..... Donor Contributions Supervisor  
KIM OKAMURA ..... Institutional Giving Associate  
MARIA PAREDES ..... Donor Relations Associate for The Guild  
ERIC SEPPALA ..... Executive Assistant to the Development Director  
ERIN SCHLABACH ..... Major Gifts Coordinator  
JESSICA THORSON ..... Corporate Relations Coordinator

AL BERMAN, ELIZABETH DELLORUSSO, DAVID GARVER, GINA EAST, LILI HERRERA, TONY LEWELLEN, HOLLY RAMOS, NICOLE SCIPIONE, LENA THOMAS, PAUL VITAGLIANO, BILL WALTON, TOM WINKLER ..... Donor Advisors

ADAM BURCH, KARLA GALVEZ ..... Donor Services Associates  
ANNE BRUNER, MURRAY E. HELTZER, MARCI MILLER, JULIE NADAL ..... Development Volunteers

## MARKETING AND COMMUNICATIONS

KORY P. KELLY ..... Director of Marketing and Communications

NANCY HEREFORD ..... Director of Media and Communications  
PHYLLIS MOBERLY ..... Media and Communications Associate  
JASON MARTIN ..... Media and Communications Associate  
LYN COWAN ..... Media and Communications Coordinator  
CHELSEY ROSETTER ..... Media and Communications Coordinator

NISHITA DOSHI ..... Art Director  
IRENE KANESHIRO ..... Senior Design Manager  
HARUKA HAYAKAWA ..... Graphic Designer

SUSAN BARTON ..... Interim Associate Director of Marketing  
ANDREW DARCEY ..... Advertising Manager  
KAREN VOCK ..... Marketing Manager  
JAMES SIMS ..... Marketing Creative Manager  
JEWEL MOORE ..... Marketing Coordinator  
ROSE POIRIER ..... Webmaster  
CRAIG SCHWARTZ ..... Production Photographer  
LARRY DEAN HARRIS ..... Copywriter  
CINEVATIVE/MARK CIGLAR ..... Production Video  
ALLIED LIVE:  
LAURA MATALON, SHANNON WILLETT, KELLY ESTRELLA ..... Advertising Agency

## TICKET SALES AND SERVICES

SHAWN ROBERTSON ..... Ticket Sales Director  
SKYPP CABANAS ..... Ticket Operations Coordinator  
SANDY CZUBIAK ..... Audience and Subscriber Services Manager  
JENNIFER BAKER, CHERYL HAWKER, RICHARD RAGSDALE ..... Audience Services Supervisors  
ALICE CHEN ..... Audience Services Asst. Supervisor  
SAM AARON, DEBORAH REED ..... Audience Services Sales Associates

JEREMIE ARENCIBIA, VICKI BERNDT, RJ CANTU, CARLOS D. CHAVEZ, JR., PETER COLBURN, DONALD CRANDALL, GARY HOLLAND, KAY LOCHARD, JUSTINE PEREZ, LEX SAVKO, DANNY SCHMITZ, CRIS SPACCA ..... Audience Services Representatives

DANUTA SIEMAK ..... Subscriber Services Supervisor  
CHRISTINA GUTIERREZ ..... Subscriber Services Asst. Supervisor  
LIGIA PISTE, CELIA RIVAS ..... Subscriber Services Senior Representatives  
IRENE CHUANG, PETER STALOC ..... Subscriber Services Representatives

SARAH K. GONTA ..... Box Office Treasurer  
KISHISA ROSS, GISELE FRAZEUR ..... Assistant Treasurers  
YULIZA BARRAZA, ANGELICA CARBAJAL, MICHAEL KEMPISTY, LEROY PAWLOWSKI, MICHAEL SALTZMAN ..... Box Office Staff  
MICHAEL ZOLDESSY ..... Account Sales Manager  
EILEEN ROBERTS ..... Account Sales Associate  
KERRY KORF ..... Priority Services Director  
SUSAN F. TULLER ..... Priority Services Operations Manager  
JAY BURNS ..... Priority Services Sales Manager  
PAUL CUEN ..... Priority Services Manager  
CANDICE WALTERS ..... Priority Services Assistant Supervisor

CAROLE BAXTER, MAGGIE DODD, NIC DRESSSEL, SOFIJA DUTCHER, MARC "BYRON" DROTMAN, SAMANTHA ELSE, AMBER FRIENDLY, LOU GEORGE, KATE HALL, JERRY JOHNSTON, LISA KESSLER, SHEP KOSTER, MATT PELFREY, DONALD RIZZO, KEN SALLEY, KRISTEN SCHRASS, BOBBI LYNNE SCOTT, ANDREW SEVERYN, ANASTASIA SILVA, MICHAEL SMITH, JEFFREY STUBBLEFIELD, QUINN SULLIVAN, DIANE WARD, JIM WATERMAN ..... Representatives

## INTERNS

ABIGAIL BROWN, ANDREW BUENROSTRO, SAMANTHA CHAFFIN, JAYNE DUTRA, SYNNOVE ERIKSEN, NADINE FLORES, MERCEDES FRIERSON, ALYSSA GARCIA, JADE JOHNSON, SOFIA LUGO, ANA MENENDEZ, CECILIA MONTES, ERIN NEEL, ERICA OCHOA, CINTHIA PALMER, MATTHEW QUINLAN, LAURA SARDISCO, ERIC ZHAO

Center Theatre Group would like to thank its exceptional staff for their ongoing commitment, dedication and extraordinary efforts.