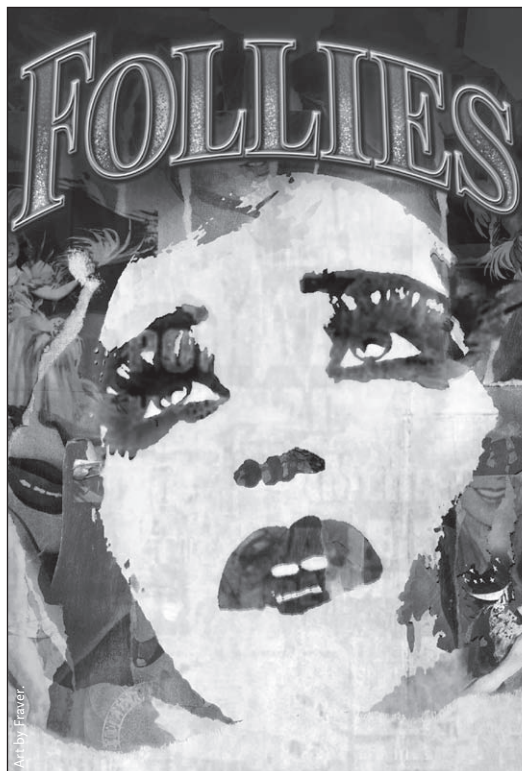


Ahmanson Theatre 45th Season 2011/2012



FIRST SEASON PRODUCTION

Bring It On: The Musical

Libretto by Jeff Whitty
Music by Tom Kitt and
Lin-Manuel Miranda
Lyrics by Amanda Green and
Lin-Manuel Miranda
Music Supervision by Alex Lacamoire
Directed and Choreographed by
Andy Blankenbuehler.
October 30 – December 10, 2011
™ and © Bring It On The Musical LLC.
All Rights Reserved.

SECOND SEASON PRODUCTION

Fela!

Book by Jim Lewis and Bill T. Jones
Music and Lyrics by Fela Anikulapo-Kuti
Additional Lyrics by Jim Lewis
Additional Music by Aaron Johnson &
Jordan McLean
Based on the Life Of Fela Anikulapo-Kuti
Conceived by Bill T. Jones, Jim Lewis &
Stephen Hendel
Directed and Choreographed by
Bill T. Jones.
Presented by Shawn "Jay-Z" Carter,
Will and Jada Pinkett Smith.
December 13, 2011 – January 22, 2012

THIRD SEASON PRODUCTION

American Idiot

Music by Green Day
Lyrics by Billie Joe Armstrong
Book by Billie Joe Armstrong and
Michael Mayer
Orchestrations, Arrangements and
Musical Supervision by Tom Kitt
Choreographed by Steven Hoggett
Directed by Michael Mayer.
March 13 – April 22, 2012

FOURTH SEASON PRODUCTION

The Kennedy Center production of Follies

Book by James Goldman
Music and Lyrics by Stephen Sondheim
Music Direction by James Moore
Choreography by Warren Carlyle
Directed by Eric Schaeffer
Starring Jan Maxwell, Victoria Clark,
Danny Burstein, Ron Raines
and Elaine Paige.
May 3 – June 9, 2012

FIFTH SEASON PRODUCTION National Theatre of Great Britain production of

War Horse

Based on a novel by Michael Morpurgo
Adapted by Nick Stafford
In association with Handspring Puppet
Company.
June 14 – July 29, 2012

SEASON BONUS OPTION

Mary Poppins

Original Music and Lyrics by
Richard M. Sherman
and Robert B. Sherman
Book by Julian Fellowes
New Songs and Additional Music
and Lyrics by George Stiles and
Anthony Drewe
Co-Created by Cameron Mackintosh
Produced for Disney Theatrical
Productions by Thomas Schumacher
Sound Design by Paul Groothuis
Lighting Design by Natasha Katz
Scenic and Costume Design
by Bob Crowley
Co-Choreography by Stephen Mear
Co-Direction and Choreography by
Matthew Bourne
Directed by Richard Eyre
Associate Choreographer and Original
Choreography Adapted by
Geoffrey Garratt
Tour Directed by Anthony Lyn.
August 9 – September 2, 2012

 Center
Theatre
Group
Ahmanson
Theatre
at the Music Center
L.A.'s Theatre Company

American
Airlines

Bank of America



SEASON SPONSORS

CENTER THEATRE GROUP BOARD OF DIRECTORS
2011/2012 OFFICERS

HONORARY CHAIRMAN
Lew R. Wasserman†

Walter Mirisch
Jo Muse
Edward B. Nahmias

CHAIRMAN
Martin Massman

Edward L. Rada
Bill Resnick
Michael Ritchie

PRESIDENT
William H. Ahmanson

Laura Rosenwald
Eva Stern
Louise Taper

VICE PRESIDENT
Ava Fries

Sue Tsao
Rosalind Zane

SECRETARY
Amy R. Forbes

EMERITUS
Harold Applebaum
Ronald J. Arnault

ASSISTANT SECRETARY
Susan Grode

Gordon Davidson
Phyllis Hennigan
Leonard Hirshan

TREASURER
Dr. Steven Nagelberg

Richard Kagan
Samuel X. Kaplan†
Nancy Olson Livingston

BOARD MEMBERS
Dean V. Ambrose
Pamela Beck
Judith Beckmen
Norris J. Bishton, Jr.

O. Kit Lokey
Diane Morton
Lawrence J. Ramer
Martin C. Washton

Dannielle Campos Ramirez
Joseph C. Carieri
Marcy Carsey
Cástulo de la Rocha
Vin Di Bona
Frances Flanagan
Barbara Fodor
Eric R. Garen
David I. Gindler
Patricia Glaser
Brindell Roberts Gottlieb
Timothy G. Hanlon
Brian Hargrove
Stephen F. Hinchliffe, Jr.
Darell L. Krasnoff
Lucy M. Labruzzo
Jennifer Altfeld Landau
Carol Mancino
Antonio Manning
Dale S. Miller

PAST PRESIDENTS
Lew R. Wasserman†
Marshall Berges†
Armand S. Deutsch†
Walter Mirisch
Henry C. Rogers†
Richard E. Sherwood†
J. David Haft†
Lawrence J. Ramer
Stephen F. Hinchliffe, Jr.
Phyllis Hennigan
Richard Kagan
Martin Massman



†Deceased

Los Angeles rehearsals for *Follies*: 1. Victoria Clark 2. Eric Schaeffer 3. L TO R: Sarrah Strimel and Sara Edwards 4. James Moore. PHOTOS BY CRAIG SCHWARTZ.



Center Theatre Group

L.A.'s Theatre Company

Ahmanson Theatre
Mark Taper Forum
Kirk Douglas Theatre

Michael Ritchie, ARTISTIC DIRECTOR Edward L. Rada, MANAGING DIRECTOR
Gordon Davidson, FOUNDING ARTISTIC DIRECTOR

AND

THE JOHN F. KENNEDY CENTER FOR THE PERFORMING ARTS

DAVID M. RUBENSTEIN, CHAIRMAN MICHAEL M. KAISER, PRESIDENT MAX A. WOODARD, VICE PRESIDENT
NEDERLANDER PRESENTATIONS, INC. ADRIENNE ARSHT HRH FOUNDATION
ALLAN WILLIAMS, EXECUTIVE PRODUCER

PRESENT

JAN MAXWELL **VICTORIA CLARK**
DANNY BURSTEIN **RON RAINES**

FOLLIES

BOOK BY

JAMES GOLDMAN

MUSIC AND LYRICS BY

STEPHEN SONDHEIM

STARRING

ELAINE PAIGE as Carlotta

ALSO STARRING

CHRISTIAN DELCROIX COLLEEN FITZPATRICK LORA LEE GAYER
MICHAEL HAYES LEAH HOROWITZ JAYNE HOUDYSHELL
FLORENCE LACEY CAROL NEBLETT MARY BETH PEIL DAVID SABIN
KIRSTEN SCOTT FREDERICK STROTHER
NICK VERINA SUSAN WATSON TERRI WHITE SAMMY WILLIAMS

WITH

ALLISON BRINER
LESLIE DONNA FLESNER
JOE KOMARA
ANGEL REDA

JOHN CARROLL
JENIFER FOOTE
ERIN N. MOORE
CLIFTON SAMUELS

MATHEW deGUZMAN
DANIELLE JORDAN
PAMELA OTTERSON
BECKY ELIZABETH STOUT

SARA EDWARDS
AMANDA KLOOTS-LARSEN
JESSICA PERRIZO
SAM STRASFELD

NATHANIEL FLATT
JOSEPH KOLINSKI
ANDREW PIROZZI
SARRAH STRIMEL

SCENIC DESIGN
DEREK McLANE

COSTUME DESIGN
GREGG BARNES

LIGHTING DESIGN
NATASHA KATZ

SOUND DESIGN
KAI HARADA

HAIR & WIG DESIGN
DAVID BRIAN BROWN

MAKE-UP DESIGN
JOSEPH DULUDE II

PRODUCTION STAGE MANAGER
RAY GIN

ASSOCIATE DIRECTOR
DAVID RUTTURA

DANCE MUSIC ARRANGER
JOHN BERKMAN

MUSIC COORDINATOR
JOHN MILLER

CASTING
LAURA STANCZYK
CASTING

PRODUCTION MANAGER
JUNIPER STREET
PRODUCTIONS

NATIONAL PRESS REPRESENTATIVE
BONEAU/BRYAN-BROWN

GENERAL MANAGEMENT
ALAN WASSER-ALLAN WILLIAMS
MARK SHACKET

ORCHESTRATIONS
JONATHAN TUNICK

MUSIC DIRECTION BY
JAMES MOORE

CHOREOGRAPHY BY
WARREN CARLYLE

DIRECTED BY
ERIC SCHAEFFER

May 3 – June 9, 2012 • Ahmanson Theatre

The Los Angeles production of *Follies* is generously supported in part by Artistic Director's Circle member **Misty Widelitz**.

CAST

(In order of appearance)

Sally Durant Plummer	VICTORIA CLARK
Young Sally.....	LORA LEE GAYER
Sandra Crane	FLORENCE LACEY
Young Sandra	BECKY ELIZABETH STOUT
DeeDee West	COLLEEN FITZPATRICK
Young DeeDee	LESLIE DONNA FLESNER
Solange LaFitte	MARY BETH PEIL
Young Solange	JESSICA PERRIZO
Hattie Walker	JAYNE HOUDYSHELL
Young Hattie	JENIFER FOOTE
Roscoe	MICHAEL HAYES
Stella Deems	TERRI WHITE
Young Stella	ERIN N. MOORE
Max Deems	FREDERICK STROTHER
Heidi Schiller	CAROL NEBLETT
Young Heidi	LEAH HOROWITZ
Emily Whitman	SUSAN WATSON
Young Emily	DANIELLE JORDAN
Theodore Whitman	SAMMY WILLIAMS
Carlotta Champion	ELAINE PAIGE
Young Carlotta	PAMELA OTTERSON
Phyllis Rogers Stone	JAN MAXWELL
Young Phyllis	KIRSTEN SCOTT
Benjamin Stone	RON RAINES
Buddy Plummer	DANNY BURSTEIN
Dimitri Weismann	DAVID SABIN
Young Buddy	CHRISTIAN DELCROIX
Young Ben	NICK VERINA
Kevin	CLIFTON SAMUELS
Buddy's Blues "Margie"	BECKY ELIZABETH STOUT
Buddy's Blues "Sally"	JENIFER FOOTE
Ensemble	JOHN CARROLL, NATHANIEL FLATT, LESLIE DONNA FLESNER, JENIFER FOOTE, DANIELLE JORDAN, AMANDA KLOOTS-LARSEN, JOE KOMARA, ERIN N. MOORE, PAMELA OTTERSON, JESSICA PERRIZO, ANDREW PIROZZI, ANGEL REDA, CLIFTON SAMUELS, BECKY ELIZABETH STOUT, SAM STRASFELD, SARRAH STRIMEL

SWINGS: MATHEW deGUZMAN, SARA EDWARDS

DANCE CAPTAINS: SARA EDWARDS, MATHEW deGUZMAN

Elaine Paige is appearing with the permission of Actors' Equity Association.

UNDERSTUDIES

Understudies never substitute for the listed players unless a specific announcement is made at the time of the performance.

For Hattie Walker, Heidi Schiller, Sandra Crane, Carlotta Champion, Stella Deems: ALISON BRINER; for Roscoe, Young Ben: MATHEW deGUZMAN; for DeeDee West, Buddy's Blues "Sally" and "Margie": SARA EDWARDS; for Phyllis Rogers Stone, Solange LaFitte: COLLEEN FITZPATRICK; for Young Heidi: LESLIE DONNA FLESNER; for Sandra Crane, DeeDee West, Solange LaFitte: JENIFER FOOTE; for Emily Whitman, Young Sally: DANIELLE JORDAN; for Buddy Plummer, Benjamin Stone, Max Deems, Dimitri Weismann, Theodore Whitman: JOSEPH KOLINSKI; for Sally Durant Plummer, Carlotta Champion: FLORENCE LACEY; for Young Phyllis: ANGEL REDA; for Young Buddy, Kevin: SAM STRASFELD.



Please silence all electronic devices such as cellular phones, beepers and watches. The use of any recording device, either audio or video, and the taking of photographs, either with or without flash, is strictly prohibited.

MUSICAL NUMBERS

1971 — The stage of the Weismann Theater

ACT ONE

Prologue	Orchestra
“Beautiful Girls”	Roscoe and Company
“Don’t Look at Me”	Sally and Ben
“Waiting for the Girls Upstairs”	Buddy, Ben, Phyllis, Sally, Young Buddy, Young Ben, Young Phyllis, Young Sally
“Rain on the Roof”	Emily and Theodore
“Ah, Paris!”	Solange
“Broadway Baby”	Hattie
“The Road You Didn’t Take”	Ben
“In Buddy’s Eyes”	Sally
“Who’s That Woman”	Stella and The Ladies
“I’m Still Here”	Carlotta
“Too Many Mornings”	Ben and Sally

ACT TWO

“The Right Girl”	Buddy
“One More Kiss”	Heidi and Young Heidi
“Could I Leave You?”	Phyllis

LOVELAND

<i>The Folly of Love</i>	
“Loveland”	The Ensemble
<i>The Folly of Youth</i>	
“You’re Gonna Love Tomorrow”	Young Ben, Young Phyllis, Young Buddy, Young Sally
<i>Buddy’s Folly</i>	
“The God-Why-Don’t-You-Love-Me Blues”	Buddy, “Margie,” “Sally”
<i>Sally’s Folly</i>	
“Losing My Mind”	Sally
<i>Phyllis’s Folly</i>	
“The Story of Lucy and Jessie”	Phyllis and Gentlemen of the Ensemble
<i>Ben’s Folly</i>	
“Live, Laugh, Love”	Ben and Company

There will be a 15-minute intermission.

ORCHESTRA

Conductor: JAMES MOORE

Associate Conductor, Keyboard: DANNY PERCEFULL

Assistant Conductor: VINCENT J. FANUELE

Music Coordinator: JOHN MILLER

Concertmaster: JEN CHOI FISHER; Violin: VLADIMIR POLIMATIDI, MARISA KUNEY,
ROBERT SCHUMITZKY, FRANCINE WALSH, MARK CARGILL; Viola: DIANE GILBERT,
HARRY SHIRINIAN; Cello: DAVID MERGEN, ERIN BREENE; Bass: KEN WILD;
Harp: AMY WILKINS; Woodwind: SAL LOZANO, JEFF DRISKILL, JAY MASON, GLEN
BERGER, BOB CARR; Trumpet: DANIEL FORNERO, ROBERT SCHAER,
MARISSA BENEDICT; French Horn: JOSEPH MEYER; Trombone: ROBERT PAYNE
(local contractor), WENDELL KELLEY, VINCENT FANUELE; Percussion: CLIFF
HULLING; Drums: ERIC HALVORSON; Guitar: PAUL VIAPIANO



The Kennedy Center production of *Follies* on Broadway. PHOTO BY JOAN MARCUS.



Soul, Spangles and Beads

Director Eric Schaeffer Reflects On *Follies*



By Lynne Heffley

Stephen Sondheim and James Goldman's *Follies* earned seven Tony Awards and nearly instant iconic status for its 1971 Broadway run. Yet full productions of this multilayered musical reflection on memory and regret are rare.

Practical and financial considerations alone — a 41-member cast, a 28-piece orchestra — are daunting.

That didn't prevent Eric Schaeffer from putting *Follies* on his wish list. Schaeffer, co-founder and artistic director of the respected Signature Theatre in Arlington and veteran director of Broadway, off-Broadway and regional theatre, has long been drawn to Sondheim's work.

Sondheim "is very daring in the subject matter that he tackles," Schaeffer said. "It's about raw emotion, searching one's own soul, connecting — or disconnecting — with people. And because the writing is so rich and the characters are so layered, you can revisit his work and discover something new each time, which is so great for a director."

In 1999, Schaeffer helmed the Broadway run of the Sondheim revue *Putting It Together*, produced by Cameron Mackintosh in association with Center Theatre Group. In 2002, he served as artistic director for the Kennedy Center's *Sondheim Celebration*, a six-musical retrospective. At the Signature, Sondheim's works are staple fare.

Schaeffer did a small-palette production of *Follies* once, too, at the Signature's old location in a renovated auto garage. But he still hoped for a crack at a full-out revival of this musical about two unhappy couples' farewell pilgrimage to the derelict former home of the *Weismann Follies*, a theatre haunted by its past glory days and the younger selves of the singers, dancers and vaudevillians who once performed there.

"There are some shows that you can go out and totally reinvent," Schaeffer said. "But *Follies* is already a highly conceptual show. It would be easy to try to make the show sunny, bright and fun, but more important are its undercurrents that everyone struggles with in their own lives.

"It's hard to believe that the show was written 40 years ago," he added, "because it feels so fresh and imaginative in its construction."

Schaeffer's opportunity to explore *Follies* in depth arose when Kennedy Center president Michael M. Kaiser approached him about staging the musical with the resources "to do it right," Schaeffer said.

The production premiered at the Kennedy Center in Washington, D.C. last year. After a sold-out, six-week run, *Follies* went on to Broadway and further critical acclaim in September, closing in January 2012 and moving to the Ahmanson Theatre for an exclusive engagement.



The Kennedy Center production of *Follies* on Broadway: 1. Jan Maxwell and cast. 2. L to R: Jennifer Foote, Danny Burstein and Kiira Schmidt. 3. Ron Raines and cast. 4. Elaine Paige and cast.

PHOTOS BY JOAN MARCUS.



It's an amazing cast,
we needed great
character actors
to really capture
who these people
were and how
they would have
performed in the
follies back then.

—Eric Schaeffer

Heading the Los Angeles cast are four-time Tony Award nominee Jan Maxwell as Phyllis, Tony Award-winner Victoria Clark as Sally, two-time Tony Award nominee Danny Burstein as Buddy, three-time Emmy nominee Ron Raines as Benjamin, and Olivier Award recipient Elaine Paige as Carlotta. All but Clark are reprising their Broadway roles.

Choreographed by Warren Carlyle, with music direction by James Moore, the show is using Jonathan Tunick's original *Follies* orchestrations. Among the cornucopia of indelible songs are "I'm Still Here," "Could I Leave You?," "One More Kiss," "Losing My Mind" and "Broadway Baby," the latter sung by Jayne Houdyshell, another Tony nominee, who is reprising her role as Hattie.

"It's an amazing cast," Schaeffer said. "We needed great character actors to really capture who these people were and how they would have performed in the follies back then.

"When you see the women lined up at the end of 'Beautiful Girls,' for instance, it's this eclectic mix of shapes, sizes and different talents. You can understand who they all are, from the soft shoe people and the tapper to the opera diva and the 'specialty' parts like Hattie, who is still working away, trying to get a Broadway show.

"And what's great is that they all have their moment to shine. Every one of these women has a moment to show her talents in a way that you don't always get to see."

"Rehearsals were a joy every day," he said, "just seeing all of these wonderful artists collaborating and having a great time doing great work."

In considering his approach, Schaeffer went to the source, asking Sondheim for one piece of advice "about going through this. He said, 'Eric, it's how you get into 'Loveland.' That's the trick to the show. If you get it right, it's brilliant, if you don't, it's a disaster.' "

In the "Loveland" sequence, the derelict theatre blossoms into an opulent, fantasy "follies" revue." Schaeffer's scenic designer, Derek McLane, created a surreal rose-garden theme that indeed turned out to be the "magical key" to a

new, stunning and transformative "Loveland" sequence, Schaeffer said.

"It feels as if all of a sudden we are in Oz." Lighting was another vital element in realizing the musical's complex emotional layers. Natasha Katz's lighting design "is so subtle and layered and evocative," Schaeffer said. "All of a sudden, these ghosts appear out of shadow and then it's, 'where did they go?'"

Costume designer Gregg Barnes was "a joy to work with. This show could so easily get caught up with spangles and beads," Schaeffer noted.

"What's great about Gregg is that he understands and is sensitive to

character. But when he has to turn it on, no one does spangles and beads better."

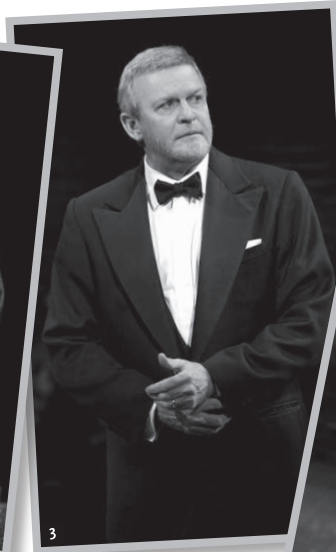
Envisioning an environmental staging, Schaeffer wanted the audience to feel haunted from the very beginning "by a world of what used to be. *Follies* is so much about broken dreams," he said. "I think we all have those moments when you relive a memory and ask yourself 'what if?' In *Follies*, we see that from every one of the characters on that stage."

It's been a satisfying journey for Schaeffer, who started the Signature Theatre in 1989 — with a degree in advertising — kept his day job for the first nine years, then "cut bait" to devote himself full-time to the company, much to his parents' initial consternation. Perhaps they weren't altogether surprised. Schaeffer directed his first show, *Oliver!*, as a teenager in the small Pennsylvania town where he grew up.

"Half the town was in the show," he said. "The other half came to see it."

Today, the busy director may have his own "what if" list of regrets, but it's a safe bet that his chosen career path and this successful revival of one of Broadway's most challenging and revered musicals won't be on it. ●

—Lynne Heffley is a Los Angeles-based freelance arts writer.



The Kennedy Center production of *Follies* on Broadway: 1. Jan Maxwell 2. Danny Burstein 3. Ron Raines 4. Elaine Paige 5. Terri White 6. L TO R: Don Correia, Susan Watson, Jayne Houdyshell and Mary Beth Peil 7. Kirsten Scott, Nick Verina, Lora Lee Gayer and Christian Delcroix
PHOTOS BY JOAN MARCUS.



Resurrecting a Broadway Baby...

By Frank DiLella

Follies is a legendary work... it's still here – and boy, is it still a beauty.

On the surface, James Goldman and Stephen Sondheim's *Follies* is a musical that honors the world of show business — the nostalgia, the allure. Linger beneath its gilded façade, however, is a musical about the human condition: a mirror conveying all the cracks and truths of its dark and damaged characters.

The prologue begins with a muted, drawn out growl of a timpani. Following its crescendo roll, an ethereal lush anthem resurrects theatre ghosts on a bare stage and makes way for the one-time Ziegfeld-like chorines and their guests to gather and pay homage to their past.

Looking at Stephen Sondheim's contribution to the world of musical theatre, *Follies* is the second work where he tackles show business as a metaphor (the first of course being *Gypsy*). *Gypsy*, which tells the tale of quintessential stage mother Rose and her quest to get her children in show-biz, marked Sondheim's second major venture on The Great White Way when it debuted in 1959 (*West Side Story* opened two years prior). Sondheim was in his late 20s when he penned the lyrics to Jule Styne's music for *Gypsy*. What Momma Rose strives to accomplish for her girls through glitz and a "pink special" in *Gypsy* – the women of *Follies* have already "been there and done that." When *Follies* debuted on Broadway in 1971, a more seasoned and experienced artist took to the show's score.

Follies represents Sondheim's valentine to the theatre and its creatures. Ted Chapin, production assistant on the original show and author of *Everything Was Possible: The Birth of the Musical Follies* says, "Sondheim is such a smart observer of people. He knows the world of show business more than anyone." He adds, "As fans of musical theatre we immediately are attracted to the reflective nature of the piece and these people involved in showbiz. *Follies* is an example of the emergence of Sondheim's unique voice in the musical theatre."

In addition, Sondheim's songs in *Follies* accomplish two things – they evoke a certain time period (think “Broadway Baby”) while also driving the story (think “Losing My Mind”).

Helmed and crafted by artists who are now theatrical icons, the original production of *Follies* not only featured music and lyrics by Sondheim and a book by James Goldman, it was co-directed by Hal Prince and Michael Bennett (Bennett also served as choreographer). With all of that creative star power, when the musical first appeared on Broadway at the Winter Garden Theatre in the spring of 1971, it was received with mixed reviews. While it picked up seven out of the 10 Tony Awards it was nominated for, and won the New York Drama Critics Circle Award for Best Musical, some critics found it to be sentimental.

It was the rock-infused *Two Gentlemen of Verona* that scored the Tony Award for best musical in 1972, and *Follies'* other competitor, *Grease*, ended up becoming one of Broadway's longest running shows — playing more than 3,000 performances.

With an original cast made up of Alexis Smith, Dorothy Collins and Yvonne De Carlo, *Follies* was the most expensive musical produced on Broadway in the early 70s. The show cost a little under a million dollars to create and lasted 15 months on the Great White Way with a total of 522 performances.

“*Follies* tackles the reality of a country in the early 70s,” said Kurt Peterson, who starred in the original production.

“It broke ground on so many levels. It went deep into its dark characters and their troubled marriages. It represents the beginning of the decline of the country after the period of World War II.”

He continues, “At that time, theatre was just starting to change after the Golden Era of Broadway. Stephen and Hal never tried to make a hit with *Follies*, they were more into creating something that was important.”

Follies is a cautionary tale. In the musical, we see the “after” as we get a glimpse of the “before.” The central characters, married couples Phyllis and Ben and Sally and Buddy are unhappy. To quote Ben in the song “The Road You Didn't Take,” “You take one road, you try one door, there isn't time for any more. One's life consists of either/or.” As the couples reconnect at the Weismann showgirl reunion – they begin to analyze the paths they've chosen.

“*Follies* was the product of hit masters before they were considered hit masters,” adds Chapin.

“Everyone was a little hungry. Sondheim had been around for a while – but *Company* put him into another category – so *Follies* was the follow up. Hal was determined to be more of a director than a producer and [with *A Chorus Line* still years away] Michael Bennett was determined to win a Tony Award.”

He adds, “People who ‘got’ *Follies* when it originally opened – were blown away by it. It not only embraces show business, but it's the story of people's disappointments.”

The revival now on stage here at the Ahmanson Theatre began at The Kennedy Center for the Performing Arts in Washington, D.C. last spring. Under the direction of Eric Schaeffer, there was no skimping on this production. The revival features lavish sets and costumes by Derek McLane and Gregg Barnes, a 28-piece orchestra, and an A-list cast including Jan Maxwell, Victoria Clark (in for the L.A. run), Danny Burstein, Ron Raines and Elaine Paige.

Ben Brantley of The New York Times welcomed the musical back to New York with “A vigorous heart now beats at the center of this revitalized revival of James Goldman and Stephen Sondheim's 1971 musical...And though the subject is the ghosts of show business past, don't expect gentle nostalgia. This *Follies* looks back as much in anger as in fondness. That's what makes it so vibrant.”

While the original production broke theatrical ground and was considered a landmark musical for its storytelling and seamlessly brilliant flip-flopping between pastiche and character driven songs, Chapin adds “people who know *Follies* and people who don't know the show are getting an honest rendition with Schaeffer's revival.”

Toward the end of the first act, aged chorine and self-proclaimed survivor, Carlotta Campion, performs the showstopper “I'm Still Here.” As if the message of the creation and resurgence of *Follies* is wrapped in the song – “good times and bum times, I've seen them all and, my dear, I'm still here.”...

Follies is a legendary work... it's *still here* – and boy, is it *still* a beauty. ●

—Frank DiLella is a New York-based journalist. He's the theatre reporter for NY1 News in Manhattan and a writer for Playbill Magazine.



Los Angeles rehearsals for *Follies*. 1. Victoria Clark and Eric Schaeffer 2. L to R: Warren Carlyle and Eric Schaeffer. 3. The company of *Follies*. PHOTOS BY CRAIG SCHWARTZ.

Who's Who



JAN MAXWELL
(Phyllis Rogers Stone) performed the role of Phyllis Rogers Stone in the Broadway and Kennedy Center engagements of *Follies*. She was

nominated for two Tony Awards in 2010 for *The Royal Family* and *Lend Me a Tenor*. She received a Drama Desk Award for Best Actress for *The Royal Family*. Other Broadway: *Coram Boy* (Tony, Drama Desk nominations), *Chitty Chitty Bang Bang* (Drama Desk Award, Tony nomination), *Sixteen Wounded* (Drama Desk nomination), *A Doll's House*, *The Sound of Music*, *The Dinner Party*, *Dancing at Lughnasa*, *City of Angels*. Off-Broadway: *Victory*, *Scenes from an Execution* (Drama Desk nomination) and *Camille* (all with Potomac Theatre Project/NYC); *Wings* (Second Stage); *My Old Lady* (Lortel Award, Drama Desk nomination). TV: *Law & Order*, *Gossip Girl*.



VICTORIA CLARK
(Sally Durant Plummer).

Broadway: *Sister Act* (Tony, Drama Desk, Outer Critics Circle, Drama League nominations), *The Light in the Piazza* (Tony, Drama Desk, OCC Awards), *Titanic*, *How to Succeed...*, *Urinetown*, *Cabaret*, *Guys and Dolls*, *A Grand Night for Singing*, *Sunday in the Park With George*. Off-Broadway: *When the Rain Stops Falling* (Drama Desk nomination), *Love, Loss, and What I Wore*, *A Prayer for My Enemy*, *The Marriage of Bette & Boo*, *Tres Niñas*, *The Agony and the Agony*, *Marathon Dancing*. Carnegie Hall: *The Grapes of Wrath*. Encores!: *Juno*, *Follies*, *Bye Bye Birdie*. Regional and National Tours: lots. Film: *Harvest*, *The Happening*, *Tickling Leo*, *Main Street*, *Cradle Will Rock*. TV: *Mercy*, *Law & Order*, *L&O: SVU*. Solo Album: *Fifteen Seconds of Grace*. Esteemed teachers and Mentors: Beret Arcaya, Edward

Sayegh, Michael Howard. Favorite Role: Thomas Luke's mom.



DANNY BURSTEIN
(Buddy Plummer) performed the role of Buddy Plummer in the Broadway and Kennedy Center engagements of *Follies*. Broadway:

Women on the Verge of a Nervous Breakdown, *South Pacific* (Tony, Drama Desk nominations, Outer Critics Circle Award), *The Drowsy Chaperone* (Tony and Ovation Award nominations), *Saint Joan*, *The Seagull*, *Three Men on a Horse*, *A Little Hotel on the Side*, *The Flowering Peach*, *A Class Act*, *Titanic* and *Company*. Off-Broadway: *Mrs. Farnsworth*; *Psych*; *All in the Timing*; *I Love You, You're Perfect, Now Change*; *Merrily We Roll Along*; *Weird Romance*; etc. Film/TV: Lolly Steinman on *Boardwalk Empire*, *Nor'easter*, *Construction*, *Louie*, *Absolutely Fabulous*, *Ed*, *Law & Order*, *Transamerica*, *Conviction*, *Hope & Faith*, *Deception*, etc.



RON RAINES
(Benjamin Stone) performed the role of Benjamin Stone in the Broadway and Kennedy Center engagements of *Follies*. TV: *Guiding Light* (three-time

Emmy nominee); PBS: *My Favorite Broadway: The Love Songs*, *Ira Gershwin at 100*, *The Rodgers & Hart Story: Thou Swell*, *Thou Witty*, *An Evening With the Pops*. Broadway/NY: *Chicago*; *Show Boat*; *Teddy and Alice*; *Olympus on My Mind*; *Oh, Lady! Lady!*; *A Little Night Music*. Regionally: *South Pacific*; *Annie*; *Kismet*; *Kiss Me, Kate*; *The King and I*; *Brigadoon*; *Oklahoma!*; *Carousel*; *Side by Side by Sondheim*; *Man of La Mancha*. More than 50 symphonies including the Boston Pops, Chicago, Cleveland, San Francisco, Israeli Philharmonic, BBC, Royal Philharmonic. Recordings: *Man of La Mancha*, *The Pajama Game*,

110 in the Shade, *Wonderful Town* and more.



ELAINE PAIGE
(Carlotta Campion). Elaine Paige, actress, recording artist, concert performer, producer and broadcaster, Olivier Award-winner and five-time

nominee, created the role of Eva Peron in *Evita* and thereafter created the roles of Grizabella in *Cats* (the song "Memory" becoming her signature) and Florence in *Chess*. Further productions include *Sunset Boulevard* (London/New York), *Anything Goes*, *Piaf*, *The King and I* and *Sweeney Todd* (Drama Desk nomination). Elaine has recorded 26 albums, received an OBE for services to Musical Theatre and presents a weekly BBC Radio 2 program *Elaine Paige on Sunday*. www.elainepaige.com.



CHRISTIAN DELCROIX (Young Buddy). Broadway: *Follies*, *South Pacific* (Professor). Tour: *Seven Brides...* (Gideon). Regional: Kennedy Center, Trinity Rep, Paper

Mill, Goodspeed, Actors Theatre of Louisville, TUTS, NSMT, KC Starlight, TOTS, Human Race and PMT. A proud native of Pittsburgh (Go Steelers!). Florida State, BFA (Go Seminoles!). Thanks and love to his family, friends, Margot and his beautiful baby girl, Juliette.



COLLEEN FITZPATRICK
(DeeDee West). Broadway/NY: *Follies*, *Sunday in the Park with George*, *Passion*, *Company*, *Into the Woods*, *Bye Bye Birdie*, *110 in the*

Shade, *Lestat*, *Jerome Robbins' Broadway*, *Cats*, *Road Show*, *Mother*

Courage with Meryl Streep, Donna in *Mamma Mia!*, *Follies* (Kennedy Center). Concerts: *Merrily We Roll Along*, *Sondheim: The Birthday Concert*, *A Sondheim Celebration*, *Anyone Can Whistle*, *South Pacific* (all Carnegie Hall); *Passion*; three Encores! Many leading roles regionally, TV, film. For Grandpa.



LORA LEE GAYER (*Young Sally*). Lora Lee is loving the palm trees! Last seen as Young Sally in the Kennedy Center and Broadway (debut) productions of *Follies*. She loves this cast

more than anything and gives big thanks to her teachers, friends, BRS, Mommy, Daddy, T.G. and AliCat!



MICHAEL HAYES (*Roscoe*). Varied credits include Ravenal, *Show Boat* (Sacramento Music Circus); Tony, *West Side Story* (Arizona Musical Theatre); Villon, *The Vagabond*

King (off-Broadway); and Danilo, *The Merry Widow* (NY City Opera), a *Live From Lincoln Center* PBS national broadcast to operatic roles such as Verdi's *Otello* (Amsterdam, DC); Herodes, *Salome* (Opera Theatre Saint Louis); Don José, *Carmen* (NY City Opera); Calaf, *Turandot* (Edmonton Opera).



LEAH HOROWITZ (*Young Heidi*) is so thankful to play this role again after wonderful runs on Broadway and at the Kennedy Center. More Broadway: *Les Misérables* (Cosette),

White Christmas, *The Woman in White*, *Fiddler...*, *La Cage aux Folles*, *Thoroughly Modern Millie*. NY: *Merrily We Roll Along* and *Where's Charley?* with NY City Center Encores! Regional: *Show Boat* (Magnolia; Kevin Kline nomination) at the Muny; *Les Misérables* (Cosette) at TUTS, the Marriott Lincolnshire and the Muny.

BFA, NYU/Tisch/CAP-21. www.leahhorowitz.com.



JAYNE HOUDYSHELL (*Hattie Walker*). Broadway: *Follies*, *The Importance of Being Earnest*, *Bye Bye Birdie*, *Wicked*, *Well* (Tony nomination, Theatre World

Award). Off-Broadway: *Coraline*, MCC (Lortel and Drama Desk nominations); *The New Century*, LCT; *The Pain and the Itch*, Playwrights Horizons; *Well*, Public Theater (Obie Award). Regional: Steppenwolf, McCarter Theatre, Yale Rep., Actors Theatre of Louisville. Film: *Everybody's Fine*, *Morning Glory*, *Trust the Man*, *Garden State*. TV: *Law & Order*, *Conviction*, *Third Watch*.



FLORENCE LACEY (*Sandra Crane*). Broadway: *Evita*, *Les Misérables*, *Hello, Dolly!*, *The Grand Tour*, *An Evening With Jerry Herman*. Off-Broadway: *Under the Bridge*, *Elizabeth*

and *Essex*, *Styne After Styne*. National Tours: *Evita*; *Hello, Dolly!* Regional: Signature Theatre — *Sunset Blvd.*, *Saving Aimee*, *Nevermore*, *Follies*; *The Rhythm Club*; Kennedy Center — *Sunday in the Park with George*, *Follies*. Connecticut Rep.: *A Little Night Music*, *Wings*. Awards: Theatre World, Outer Critics Circle.



CAROL NEBLETT (*Heidi Schiller*). One of America's greatest and most acclaimed sopranos, Carol Neblett's career has spanned over 40 years, performing opera's most coveted

roles in the world's greatest opera houses, including the Metropolitan Opera, Vienna, Covent Garden, San Francisco Opera, Salzburg, Teatro Colon and Chicago Lyric Opera. Credits include Beethoven's *Ninth Symphony* for Carnegie Hall with Carlo Maria Giulini (also at Los Angeles Music Center, broadcast worldwide);

Respighi's *Laud to the Nativity* (Los Angeles Music Center); *La Bohème*, Boito's *Mefistofele* (New York City Opera); Puccini's *Tosca* (Lyric Opera of Chicago); *Der Fliegende Holländer*, *Tosca*, *Don Giovanni*, *Manon Lescaut*, *Un Ballo in Maschera*, *Falstaff*, *La Fanciulla del West* (Metropolitan Opera). Throughout the world's major opera houses, Ms. Neblett has sung more than 85 leading roles and more than 100 oratorio and symphonic works. Many of her operas and concerts have been recorded and filmed. Ms. Neblett is currently on the vocal staff as Artist-in-Residence at Chapman University.



MARY BETH PEIL (*Solange LaFitte*). Broadway: *Follies*, *Women on the Verge...*, *Sunday in the Park with George*, *Nine* (Outer Critics Circle nomination), *The King and I* (Tony

nomination). Off-Broadway: *The Morini Strad*, *The Room*, *Hedda Gabler*, *First Lady Suite*, *Frame 312*, *As Thousands Cheer*, *Sylvia*, *A Cheever Evening* (Obie), *Missing Persons* (Obie), *Naked Truth* (Obie), *Finding the Sun*, *Later Life*. Regional: *Third Story* (La Jolla Playhouse); *33 Variations* (Helen Hayes nomination), *A Month in the Country* (Arena Stage); *M. Proust* (Jefferson nomination/About Face); *Wit*, *Madagascar* (Adirondack Theatre); *Sweeney Todd* (Kennedy Center); *Hay Fever* (Yale Rep); *Hamlet* (Huntington Stage); *Triumph of Love* (Baltimore Center); *Assassins* (San Jose Light Opera). Film: *Mirrors*, *Flags of Our Fathers*, *The Stepford Wives*, *The Odd Couple II*. Television: *The Good Wife* (Jackie), *Dawson's Creek* (Grams), *Fringe*, *Law & Order*, *The Reagans*. Mary Beth is an ensemble member of the Atlantic Theater Company.



DAVID SABIN (*Dimitri Weismann*) is deeply grateful to George Abbott, Joshua Logan, Jose Quintero, Alan Schneider, Lloyd Richards, Joseph Papp, Richard

Foreman, David Merrick, Mel Brooks, David Mamet, Bette Davis, Sir Derek Jacobi, Stark Hesselstine, Robert Moore, Philip Bosco, Tom Jones, Harvey Schmidt, John Olive, William Graham, Gilbert Hartke, David Wayne and especially Michael Kahn for their invaluable and treasured contributions to his long and happy career.



KIRSTEN SCOTT

(*Young Phyllis*). Kirsten is thrilled to be back at the Ahmanson where she was last seen popping out of a giant banana as Flame in *Minsky's*.

Broadway: *Follies*, *Hairspray*. Regional: *Follies* (Kennedy Center); *Limelight* (La Jolla Playhouse); *Curtains* (PCLO); *Thoroughly Modern Millie*, *A Chorus Line*, *Beauty and the Beast* (WVPT). Off-Broadway: *The Marvelous Wonderettes*, *Gemini* (NYMF). Guest soloist with the late maestro Erich Kunzel. TV: *All My Children*. BFA, CMU. Thank you Warren, Eric, Jim, BRS and Bracken family! For the love of my life, Matt.



FREDERICK STROTHER

(*Max Deems*) is a Washington, D.C., native and proud member of AEA. He has performed at most D.C. area theatres: Studio

Theatre's production of *Radio Golf* (second Helen Hayes nomination); *Stuff Happens* (Colin Powell), Olney Theatre Center; *Fences* (Troy Maxson) and *Jitney* (Jim Becker) at Ford's Theatre. Film: *Invincible* (Disney), Terry Gilliam's *Twelve Monkeys*, Jonathan Demme's *Beloved*. TV includes *Law & Order: SVU* (Judge Siebert) and HBO's *The Wire*.

NICK VERINA (*Young Ben*). Nick is thrilled to be returning to *Follies* after making his Broadway debut with the show this past fall. Broadway: *Follies* (original cast recording). National Tours: *Grease* (1st national 2010, Sonny), *Forbidden Broadway: SVU*. New York/Regional: *Follies*



(Kennedy Center), *Altar Boyz* (Chicago production, Abe), *That Time of the Year* (York Theatre, original cast recording), *Wallenberg* (NYMF and WPPAC),

The Jerusalem Syndrome (NYMF). Nick has studied with Second City in Chicago and UCB in New York. Love and thanks to Erin and his family. www.nickverina.com.



SUSAN WATSON

(*Emily Whitman*) starred in Broadway's *Bye Bye Birdie*; *No, No Nanette*; *Carnival*; *Ben Franklin in Paris*; was a Tony nominee for *A Joyful*

Noise and starred in Lincoln Center's *Carousel* and City Center's *Oklahoma!* On NBC-TV's Hallmark Hall of Fame, Susan starred in *The Fantasticks* and is in Talkin' Broadway's top ten for her CD, *Earthly Paradise: The Songs of Tom Jones and Harvey Schmidt*. She's just finished the NYC run of the Jones-Schmidt musical *The Show Goes On*. Susan's first Broadway role was in *West Side Story* taken to London by lyricist Stephen Sondheim and director Jerome Robbins. Now she's back in yet another Sondheim musical, the *Follies* revival in which she opened at the Kennedy Center and performed on Broadway last year.



TERRI WHITE

(*Stella Deems*). Terri has been in several Broadway and off-Broadway shows including the original Joice Heth in *Barnum*, *Ain't Misbehavin'*,

Welcome to the Club, *the Club* (Obie Award), *Nunsense I and II*, *Nuncrackers*, *Finian's Rainbow* (Drama Desk and Outer Critics Circle nominations), *Chicago*, *Steppin' Out* at Radio City with Liza Minnelli, *Showboat*, *Bubbling Brown Sugar*, *Two Gentlemen of Verona*, *And the World Goes 'Round*, *Little Shop of Horrors* (as

Audrey 2), The Kennedy Center and Broadway productions of *Follies* as Stella Deems, and many more. Film/TV: *Nunsense I and II* with Rue McClanahan, *Liza Live* at Radio City Music Hall, *Boys on the Side* and *Law & Order: Criminal Intent*. Recordings include *Forbidden Broadway 25th Anniversary*, *Barnum*, *Liza Live*, *Finian's Rainbow*, *Follies*, and her own CD *The Lady's Got to Sing*.



SAMMY WILLIAMS

(*Theodore Whitman*) is thrilled to be joining the cast of *Follies*! He is best known for his Tony Award-winning

performance as Paul San Marco in the original production of *A Chorus Line*. He also was awarded the Obie Award and was given a Special Theatre World Award for his contribution to that production. Broadway audiences have seen him in *The Happy Time*, *Applause* and *Seesaw*. Mr. Williams garnered a Robbie Award as Best Featured Actor in a Comedy portraying Judy Garland, a female impersonator, in the mystery spoof *Doing Judy*. Rave notices were given for his lead performance as Terry in the musical comedy *All This and Heaven Too*. His one man show *And the Winner Is* plays throughout the Los Angeles area and major cities across the U.S. www.sammywilliams.me.



ALLISON BRINER

(*Understudy*) was recently seen in the GLAAD Award-winning musical, *Southern Comfort*, starring Annette O'Toole, at the Cap 21 Theatre in New

York City. Broadway: *Mamma Mia!* National Tours: *Mamma Mia!*, *Titanic...A New Musical*, *Les Misérables*. Off-Broadway: *Forbidden Broadway*, *Listen to my Heart*, *Pete 'n' Keely*, *Forbidden Hollywood*, *Song of Singapore*, *Return to the Forbidden Planet*, *Jacques Brel...The 25th Anniversary*. Representative regional theatres: Papermill Playhouse,

Berkshire Theatre Festival, Westport Country Playhouse, Syracuse Stage, The Cape Playhouse, TheatreWorks in Palo Alto, Denver Center For The Performing Arts, Actors Theatre of Louisville. Television: *Law & Order*, *Law & Order: SVU*, *All My Children*, *One Life to Live*. Ms. Briner is a principal performer in The Indianapolis Symphony's production of *Pops Goes Vegas*, which tours the U.S. and Canada.



JOHN CARROLL
(Ensemble).

Broadway: *Follies*, *Women on the Verge of a Nervous Breakdown*.

Off-Broadway: *On the Town*, *Applause*, *No Strings*

(Encores!). Tours: *A Chorus Line*, *Chicago*, *Movin' Out*, *Fosse*. Concert Dance: Parsons Dance Company. TV: *SNL*, *All My Children*, *The Today Show*. Graduate: The Juilliard School. www.thejohncarroll.com.



MATHEW deGUZMAN (*Swing, Assistant Dance Captain*). Thrilled to be at the Ahmanson!

Broadway: *Follies*. Tour: *Dirty Rotten Scoundrels*.

Regional: *Curtains* (Paper Mill and Houston TUTS), *White Christmas* (Pioneer Theatre), *WSS* (North Carolina Theatre), *Hot Mikado* (Drury Lane), *42nd Street* (Riverside and Fulton). BM, Belmont University. Thanks to Warren, Eric, James, Marjorie, Craig, his loving family and supportive friends. Proud member of AEA.

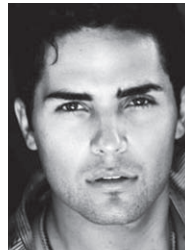


SARA EDWARDS

(*Swing, Dance Captain*). Broadway: *Follies*, *Irving Berlin's White Christmas*. Favorites: *Becoming Chaplin*, *Of Thee I Sing* and *No, No, Nanette* (Encores!

NYCC); *Turn of the Century* (Goodman

Theatre). Thank you Warren. And lots of love to Ari and my family.



NATHANIEL FLATT

(Ensemble), probably taking *The Lion King's* motto regarding the "circle of life" too seriously, has come full circle.

Nathaniel received his B.F.A. from Oklahoma City University. He has also performed on *Glee*, *The Academy Awards* and *500 Days of Summer*, as well as being part of a short-lived boy-band with Warner Brothers Records. Veering slightly askew from the music/performance world, he has appeared in numerous print and commercial campaigns. But apparently Tyra Banks said "You're no longer America's Next Top Model," so now he is at *Follies*, honored to be welcomed back home. Prodigal son, anyone?



LESLIE DONNA FLESNER

(Ensemble). Broadway and Encores!: *Follies*, *Fanny*, *Finian's Rainbow* (Melinda, u/s Susan the Silent). Film/TV:

Boardwalk Empire. Regional: Kennedy Center (*Follies*), North Shore Music Theatre, Pittsburgh CLO, Portland Center Stage, Ogunquit Playhouse, Seaside Music Theater. FSU class of '08. Love to Warren, Eric, Mom and Dad.



JENIFER FOOTE

(*Buddy's Blues "Sally," Ensemble*). Broadway: *Follies*, *Rock of Ages*, *A Chorus Line*, *Dirty Rotten Scoundrels*, *Dracula*, *Annie Get Your Gun*. National

Tours: *Dirty Rotten Scoundrels* (Jolene Oaks). Other Favorites: *First Wives Club* (Old Globe), *Sinatra* (Radio City Music Hall), and two years as a Radio City Rockette. Proud graduate of UC Irvine. Live gratitude



DANIELLE JORDAN

(Ensemble). Broadway: *Follies*. Regional: *Hairspray* (Cape Playhouse); *Oklahoma!*, *Kiss Me, Kate* (Paper Mill Playhouse); *Ragtime*, *Peter Pan*

(Pioneer); *White Christmas*, *The Music Man* (1st National Tour). Thank you Michael Kaiser and all of the Kennedy Center for the show that keeps on going! Love to family and friends.



AMANDA KLOOTS-LARSEN

(Ensemble). London: *Paradise Found*. Broadway: *Young Frankenstein*, *Good Vibrations* (Bikini Girl).

National Tours:

Spamalot, *42nd Street*. RCMH Rockette. Love and thanks to God, her husband David and her family. Joshua 1:9. If you love desserts as much as I do, check out www.justdessertsnyc.com



JOSEPH KOLINSKI
(Understudy).

Broadway: original cast of *Titanic*, *Les Misérables*, *The Human Comedy* and others. Off-Broadway: *Time and Again*, *The Prince*

and the Pauper. Television: ABC's *One Life to Live* (Prince Roland of Mendora). Kennedy Center: Leonard Bernstein's *Mass*, *Follies*.



JOE KOMARA

(Ensemble). Broadway: *Grease* (2007 Revival). Off-Broadway: *Applause* (Encores! at City Centre), *The Donkey Show*. National Tour:

Annie Get Your Gun. Los Angeles: *Cats* (Musical Theatre West). Regional: *Smokey Joe's Cafe*, *And The World Goes Round*, *Swing!*, *La Cage aux Folles*, *All Night Strut*, *West Side Story*. Film: *eCupid*, *Special Needs*, *Revolutionary*

Road. TV: *The Girl's Guide To Depravity*, *As The World Turns*, *The Tonight Show with Jay Leno*, *Jimmy Kimmel LIVE*, *Breaking Point* and *Betty White's goth Birthday*.



ERIN N. MOORE (*Ensemble*) is excited to perform in *Follies* after a fabulous run on Broadway. Regional Credits: *Anything Goes* (MUNY), *The King and I*

(*Starlight*). Concert Dance: *Philadanco!* Television: *SNL*, *Amici*. Thanks Mom, Dad, Brad, friends and family! In loving memory of Aunt Bev.



PAMELA OTTERSON (*Ensemble*). Broadway: *West Side Story* (Graziella, u/s Anybodys), *Follies* (Young Carlotta). NY

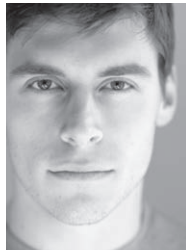
Credits: *Damn Yankees* and *Juno* (City Center Encores!), *The Radio City Christmas Spectacular* (Clara/Ensemble). National Tours: *The Boy Friend* directed by Julie Andrews, *Saturday Night Fever*. Regional: *Swing!*, *Grease*, *Carousel*. To my family and friends and Dan: I love you!



JESSICA PERRIZO (*Ensemble*). Broadway: *The Producers* (Usherette/Dance Captain/U.S. Hold Me Touch Me). Broadway National Tours: *The*

Producers (Dance Captain), *Chicago* (Hunyak), *Cabaret* (Rosie/U.S Kost). Off-Broadway/NY Theatre: *The Pajama Game* (Encores! City Center), *The Radio City Rockettes* (Rockette). Regional: PCLO Season (winner of the Julia Deberonson Award), *Joseph Dreamcoat* (Mrs. Potiphar). Film: *The Producers*, *Swan Lake*, *Another Point of View* (winner of the Berlin Black Film Festival). TV: *The Mentalist*, *Behind The Scenes*. Commercials: Target, JCPenny, Swiffer, McDonalds, Charter

Communications, among others. Thanks and love to my supportive friends and family who have made a life in the arts possible.



ANDREW PIROZZI (*Ensemble*) is thrilled to join the cast of *Follies!* Credits include National Tours—*Dirty Dancing* and *Movin' Out*; Off-Broadway—

Sophisticated Ladies; Regional—*Working*, *Kiss Me Kate*, *West Side Story*. TV: ABC's *Work It*, Lifetime's *The Client List*. Film: *Rock of Ages*. Thanks to my loving and supporting family, especially my mother, who raised me to live and follow my dreams! Here's to my lovely family of girls, Stacey, Kyra and Ferrara; this one's for you!



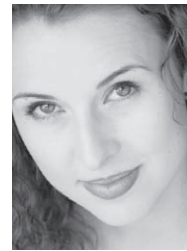
ANGEL REDA (*Ensemble*). Angel is thrilled to team up with *Follies* in L.A. Last year she performed with Hugh Jackman in his one man stage show at the Curran

and Princess of Wales Theatre. Earlier this year she worked for Disney Interactive as Drama Queen in the animated *Habit Heroes*. Broadway: *Chicago* (Roxie cover, Mona, Annie). *Wicked*, L.A. and San Francisco (Elphaba cover). National Tour: *Sweet Charity* (Ursula), *Chicago* (Go-to-hell Kitty, Mama Morton cover). City Center Encores: *No, No, Nanette* (Flora). L.A. Theatre: *Dangerous Beauty* (Imperia). Film/TV: *Axis*, *Stepford Wives*, *Chappelle's Show*, *Red Riding Hood's Adventure* and *Safe at Home*. She received the CEA award for Best Actress in a Musical for her performance as Queenie in *The Wild Party*. Angel holds a BFA from CCM. www.angelreda.com.

CLIFTON SAMUELS (*Ensemble*). Is stoked to be back on the West Coast at the Ahmanson after opening the Original Revival Tour of *A Chorus Line* here in 2008! Other credits: *Follies* (Broadway and Kennedy Center); *Urban Cowboy* (1st National); *Carnival!*



(Goodspeed, u/s Paul); *Twilight-The Musical* (New World Stages, NYC). Thanks: MSA, Michael and Jan. Love to God, my supportive family, friends, teachers, R2 and stunning fiancée, Regina. DREAM BIG!



BECKY ELIZABETH STOUT (*Ensemble*) is delighted to make her Ahmanson Theatre debut with *Follies*. International Tours: *Sopa de Sobre*, Spain; Spanish

premiere of *Robin Hood*, Mexico. Regional credits include *Cats* (Cassandra, Jennyandots), *All Shook Up* (Miss Sandra), *West Side Story* (Consuelo), *Best Little Whorehouse in Texas* (Mona), *Dirty Rotten Scoundrels* (Renee/Choreographer), *The Wiz* (Choreographer), *Fiddler on the Roof* (Chava), *Guys and Dolls*, *Sugar Babies*. Holland America Line *Showroom at Sea* (Dance Captain). 2012 Scholarship Winner Rockette Intensive (RCMH). SDSU BA Spanish/Dance. Proud AEA member. Endless gratitude for the love and prayers that got me here! For Mom, Marjie. www.beckystout.com.



SAM STRASFELD (*Ensemble*). Broadway/West End: *Mary Poppins*, *Peggy Sue Got Married*. National Tours: *Mary Poppins*. Other New York: *MOTION*

Dance+Theatre. Regional: *Follies* (Kennedy Center); *We Will Rock You* (Mirvish Productions); *Cabaret*, *Company*, *My Fair Lady*, *The Threepenny Opera*, *Wilde Tales*, *Fiddler on the Roof*, *The Three Musketeers* (Stratford Shakespeare Festival); *High Society*, *Design for Living*, *Journey's End*, *Gypsy*, *Pal Joey*, *Floyd Collins*, *Pygmalion*, *The Three Sisters*, *On The Twentieth Century*, *The Long Christmas Dinner* (The Shaw Festival); *Anyone Can Whistle* (Canadian Premiere),

Kiss Me Kate (Talk Is Free Theatre).
Television: *Eloise at the Plaza* (Disney).



SARRAH STRIMEL (Ensemble).
Broadway: *Catch Me If You Can*, *Rock of Ages* (Constance Sack), *Young Frankenstein* (Inga u/s), *The Producers* (Ulla u/s). National

Tours: *Dirty Rotten Scoundrels*, *The Producers*. Favorite Regional: Hedda Hopper in *Sammy* (Old Globe), *Minsky's* (Ahmanson), *Bombalurina* in *Cats* (TUTS), *Stupyfying Jones* in *Li'l Abner* (Goodspeed). TV: *Smash*, *The Late Show with David Letterman*. For Bigs, with love!

JAMES GOLDMAN (Book) received a Tony Award nomination in 1972 for the book for *Follies*. He co-wrote the book, music and lyrics for *A Family Affair* with John Kander and William Goldman. His plays include *They Might Be Giants*, *Blood Sweat and Stanley Poole* (co-written with his brother William), *The Lion in Winter* and *Tolstoy*. His screenplays include *The Lion in Winter*, for which he won an Academy Award, *Nicholas and Alexandra*, *They Might Be Giants*, *Robin and Marian* and *White Nights*. For television he wrote *Evening Primrose* with Stephen Sondheim, adaptations of *Oliver Twist* and *Anna Karenina* and the miniseries *Anastasia: The Mystery of Anna*. His novels include *Waldorf*, *The Man From Greek and Roman*, *Myself as Witness* and *Fulton County*. At the time of his death in October 1998, Mr. Goldman had recently completed the screenplay of *Tolstoy* as well as the book and lyrics for *The Celebrated*, *Scandalous*, *Heroic Misadventures of Tom Jones*.

STEPHEN SONDHEIM (Music & Lyrics) wrote the music and lyrics for *Saturday Night*, *A Funny Thing Happened on the Way to the Forum*, *Anyone Can Whistle*, *Company*, *Follies*, *A Little Night Music*, *The Frogs*, *Pacific Overtures*, *Sweeney Todd*, *Merrily We Roll Along*, *Sunday in the Park With George*, *Into the Woods*, *Assassins*, *Passion* and *Road*

Show as well as lyrics for *West Side Story*, *Gypsy* and *Do I Hear A Waltz?* and additional lyrics for *Candide*. Anthologies of his work include *Side by Side* by Sondheim, *Marry Me a Little*, *You're Gonna Love Tomorrow*, *Putting It Together* and *Sondheim on Sondheim*. For films, he composed the scores of *Stavisky*, co composed *Reds* and wrote songs for *Dick Tracy* and the television production *Evening Primrose*. He co-authored the film *The Last of Sheila* and the play *Getting Away With Murder*. Mr. Sondheim is on the Council of the Dramatists Guild, having served as its president from 1973 to 1981.

ERIC SCHAEFFER (Director).
Broadway: *Million Dollar Quartet*, *Glory Days* and *Putting It Together*. London/West End: *The Witches of Eastwick* and *Million Dollar Quartet*. Kennedy Center: Artistic Director, *Sondheim Celebration*, *Passion*, *Sunday in the Park*, *Follies*, *Mame*. Mr. Schaeffer is the co-founder and artistic director of Signature Theatre in Arlington, VA, (winner of the 2009 Regional Theatre Tony Award®) and home of the American Musical Voices Project, the largest musical theatre commission program in America. Signature Theatre productions include *Merrily We Roll Along*, *Into the Woods*, *Company*, *Assassins*, *Sweeney Todd*, *Pacific Overtures*, *Les Misérables*, *Sunset Blvd.* and *The Witches of Eastwick*, among others.

WARREN CARLYLE (Choreographer).
Broadway (Director/Choreographer): *Hugh Jackman Back on Broadway*, *Finian's Rainbow*, *A Tale of Two Cities*. (Choreographer): *Follies*. Encores! City Center: (Director/Choreographer): *Cotton Club Parade*, *Girl Crazy*, *On the Town*, *Juno*, *Stairway to Paradise*. Regional (Director/Choreographer): *Becoming Chaplin* (La Jolla Playhouse), *Buddy's Tavern* (O'Neill Theater Center), *Lucky Guy* (Goodspeed). Choreographer: *Randy Newman's Harps & Angels* (Mark Taper Forum), *Camelot* (Stratford Shakespeare Festival), *Mame* (Kennedy Center), *The Pirates of Penzance* (Paper Mill, Goodspeed), *The Baker's Wife* (Goodspeed). England: *Me and My Girl* (U.K. Tour), *The Goodbye Girl*

(1st U.K. Tour). TV/Film: *Deception*, *Hope and Faith*, *An Evening at the Boston Pops*, Elton John's *Made in England* video. Creative Producer: *An Evening With Hugh Jackman*.

JAMES MOORE (Music Director, Conductor). Broadway: *South Pacific*, *Ragtime* (revival), *The Producers*, *Steel Pier*, *Company* (Roundabout). National Tours: *The Producers* (starring Jason Alexander and Martin Short); *Kiss Me, Kate*; *Crazy for You*; *The World Goes 'Round – The Songs of Kander and Ebb*. The Kennedy Center: *Follies*; *Ragtime* (Helen Hayes Award nomination for Outstanding Music Direction); Broadway: *Three Generations*; *Mame* (starring Christine Baranski); and upcoming at the Center: Terrence McNally's new adaptation of *Pal Joey*, and *The Sondheim Celebration 10th Anniversary Concert*. James holds both Master and Bachelor of Music degrees from the Indiana University Jacobs School of Music. Thanks and gratitude to Michael M. Kaiser.

JONATHAN TUNICK (Orchestrations). Long associated with Stephen Sondheim (*Company*, *Follies*, *A Little Night Music*, *Pacific Overtures*, *Sweeney Todd*, *Merrily We Roll Along*, *Into the Woods*, *Passion*, *The Frogs*, *Road Show*). Other Broadway Credits: *Promises, Promises*, *A Catered Affair*, *LoveMusik*, *A Chorus Line*, *The Color Purple*, *Titanic* and *Nine*. Composer/Arranger/Conductor, Film/TV: Mike Nichols, Franco Zeffirelli and Sidney Lumet, plus *Blazing Saddles*, *Young Frankenstein*, *Murder, She Wrote* and *Columbo*. On Records: Arranger/Conductor – Bernadette Peters, Kate Bush, Judy Collins, Johnny Mathis, Bette Midler, Barbra Streisand, Paul McCartney. Conductor – *Company* at Kennedy Center. One of only eight persons holding Tony, Emmy, Grammy and Academy Awards. Elected 2009 to the Theater Hall of Fame.

DEREK McLANE (Set Design).
Anything Goes; *How To Succeed...; Bengal Tiger...; Ragtime*; *Million Dollar Quartet*; *33 Variations*; *The Pajama Game*; *Grease*; *Threepenny Opera*; *Little Women*; *I Am My Own Wife*; *The Women*; *Present Laughter*; *Holiday*;

Ruined; Lie of the Mind; Becky Shaw; Rafta, Rafta; 10 Million Miles; Things We Want; The Voyage Inheritance; Two Trains Running; Hurlyburly; Abigail's Party. Awards: 1997 and 2004 Obie Awards; 2004, 2005, 2007 Lucille Lortel Awards; 2011 Drama Desk Award; 2009 Tony Award®.

GREGG BARNES (*Costume Design*). Broadway: *Follies, Elf, Legally Blonde* (Tony nomination), *The Drowsy Chaperone* (Tony, Drama Desk & Outer Critics Circle Awards; Olivier nomination), *Dirty Rotten Scoundrels, Flower Drum Song* (Tony nomination), *Side Show, To Be or Not To Be, Bye Bye Birdie.* New York: *The Wizard of Oz, Radio City Christmas Spectacular, Cinderella, The Merry Widow and Pageant* (New York and London's West End; Olivier nomination). Regional credits include *Minsky's, Robin and the Seven Hoods, Mame, Lucky Duck* (San Diego Critic's Award), *Allegro* (Helen Hayes Award) and many others. TDF Young Master Award.

NATASHA KATZ (*Lighting Design*) has designed extensively for theatre, opera and dance. Recent Broadway Credits: *Once, Sister Act, Elf, The Addams Family, Impressionism, The Coast of Utopia: Salvage* (Tony Award), *A Chorus Line* (revival), *Spelling Bee, Tarzan, Aida* (Tony Award), *Sweet Smell of Success, Twelfth Night, Beauty and the Beast* and *Gypsy*. Other designs include *Alice's Adventures in Wonderland* (Royal Ballet), *Buried Child* (National Theatre, London), *Cyrano* (the Met), *Carnival of the Animals* (NYCB), *Swan Lake* (Edinburgh Festival), *Don Quixote* (ABT), concert acts for Shirley MacLaine, Ann-Margret and Tommy Tune.

KAI HARADA (*Sound Design*) attended Yale University before leaving to pursue a career in theatrical sound design. Associate credits to Tony Meola include *A Christmas Carol; The Sound of Music; Disney's Der Glöckner von Notre Dame; Kiss Me, Kate; The Man of La Mancha*; and *Wicked*. Designs include *Two Cities, Under the Bridge, Barbie Live in Fairytopia, She Loves Me* (Oregon

Shakespeare Festival), *Million Dollar Quartet* (Chicago, Broadway, London), *Zorro* (Moscow), *Hinterm Horizont* (Berlin), and *First Date* (ACT Seattle). In his spare time, he supervises sound for *Wicked* around the world.

DAVID BRIAN BROWN (*Hair and Wig Design*). Broadway: *Death of a Salesman, Sister Act, Arcadia, A Steady Rain, Shrek, The Country Girl, The Little Mermaid, Legally Blonde, Spamalot, Butley, Tarzan, The Wedding Singer, Chita Rivera: The Dancers Life, The Odd Couple, Dirty Rotten Scoundrels, Fiddler on the Roof, Nine, Gypsy, Flower Drum Song, Sweet Smell of Success, The Invention Of Love, Aida, The Rainmaker, The Iceman Cometh, Annie Get Your Gun, Little Me, Chicago, Sideshow, 1776, Steel Pier, Big, Sunset Boulevard.* Film credits include *It's Complicated, Angels in America* (Emmy nominated), *To Wong Foo...*

JOSEPH DULUDE II (*Make-up Design*) is the make-up designer for all *Wicked* productions worldwide. Broadway: *Follies, Man and Boy, The Normal Heart, Catch Me if You Can, Elf, Lend Me a Tenor, Grease!, The Wedding Singer, Assassins, Into the Woods.* Television: *E!, Style, Lifetime, PBS, Access Hollywood, MTV.* Runway: *Donna Karan, Diane Von Furstenberg, Monique Lhuiller, Diesel* and more. Other: Artist Relations and Consultant for MAC Cosmetics.

DAVID RUTTURA (*Associate Director*) has worked as an associate/assistant director on Broadway (*Follies, Lombardi, Million Dollar Quartet, White Christmas, A Man For All Seasons*), off-Broadway (Atlantic Theater Company, Roundabout), regionally (Kennedy Center, La Jolla Playhouse, Philadelphia Theatre Company) and internationally (*Ben Hur Live*). Currently: Resident Director of *Spider-Man: Turn off the Dark*. Artistic director of Good Company. goodcompanynyc.org.

JOHN MILLER (*Music Coordinator*). Broadway, over 100 shows, including *Jesus Christ Superstar, Leap of Faith, Newsies, Once, Godspell, Follies, Porgy*

and *Bess, Jersey Boys, Priscilla Queen of the Desert, Sister Act, Rock of Ages, On a Clear Day, Catch Me If You Can, La Cage Aux Folles, A Little Night Music, Baby It's You, Elf, Sondheim on Sondheim, Ragtime, Cry-Baby, Sunday in the Park with George, Young Frankenstein, Xanadu, Les Misérables, Grey Gardens, The Drowsy Chaperone, The Producers, Hairspray.* Studio Musician (bass): Michael Jackson, Madonna, Peter, Paul and Mary, Eric Clapton, Frank Sinatra, Leonard Cohen, Tommy Flanagan, Carly Simon, Pete Seeger, Smashing Pumpkins, Aerosmith, Jimmy Page, NY Philharmonic. His album *Stage Door Johnny – John Miller: Takes on Broadway* is available on PS Classics Records. www.johnmillerbass.com.

LAURA STANCZYK, CSA (*Casting*). Broadway, Off-Broadway and Tours: *Follies, Cotton Club Parade, Lombardi, Ragtime, Impressionism, Seafarer, Radio Golf, Coram Boy, Translations, Damn Yankees, Dirty Dancing, Glorious Ones, Cripple of Inishmaan, Tryst.* Regional/International: *Master Class, Lisbon Traviata, Golden Age, Harps and Angels, Gruesome Playground Injuries, Me Myself & I, Fetch Clay Make Man, Shawshank Redemption, Long Day's Journey Into Night, Importance of Being Earnest.* Five Artios Awards nominations for Excellence in Casting, one win for *Follies*.

RAY GIN (*Production Stage Manager*) is thrilled to be back home at the Ahmanson Theatre. Previous stints here were the record-setting run of *The Phantom of the Opera* with Michael Crawford from 1989-1993, *Martin Guerre, Mamma Mia!, A Chorus Line* and *Dreamgirls*. He has just come off the jubilant national tour of *Memphis*. His other credits include *Phantom: The Las Vegas Spectacular* at the Venetian, the record-breaking run of *Phantom* in San Francisco, *The Ten Commandments* with Val Kilmer, *The Lion King, Chicago, Les Misérables, Cats, A Little Night Music* and many others, celebrating 40 years in the theatre. He is most proud of his volunteer work for AIDS charities (Project Inform and Project Angel

Food, among others) and is a long-standing member of Actors' Equity Association.

LORA K. POWELL (*Stage Manager*). Broadway/NY: *Annie Get Your Gun*, *Chicago*, *The Life*, *Annie*, and *The Wizard of Oz* at Madison Square Garden. National Tour: *Wicked*. Los Angeles: *Wicked* (also San Francisco), *The Producers*, *The Lion King*, *Disney's Aladdin—A Musical Spectacular*. Regional: Paper Mill Playhouse (five seasons as resident Production Stage Manager). Lora is pleased to make her Ahmanson debut working on *Follies* and thanks her parents and her son Dylan for their continued love and support.

LEE MICKLIN (*Stage Manager*). Broadway: *Follies*, *Evita* with Ricky Martin. Regional: *Compulsion*, *We Have Always Lived in the Castle*, *Bossa Nova*, *Autumn Sonata* (Yale Repertory Theatre), *Camelot* (Goodspeed Opera House). Other N.Y. credits include *Balm in Gilead* with Michael Shannon, *Sandy the Dandy & Charlie McGee*, *5 By 3*, *For Reasons Unknown*, the Lincoln Center Theater Directors Lab, the Pascal Rioult Dance Theater and workshops/readings for The Old Globe, The Civilians, Food for Thought Productions. B.A.: Lehigh University. MFA: Yale School of Drama.

ALAN WASSER & ALLAN WILLIAMS (*General Management*), Alan Wasser and Allan Williams, along with Mark Shacket and Aaron Lustbader, oversee and supervise Tony Award® Productions, *The Phantom of the Opera*, *Spider-Man Turn Off The Dark* and *How to Succeed in Business Without Really Trying* on Broadway, *Million Dollar Quartet* off-Broadway, and *Phantom* in Las Vegas. Upcoming productions include *Kinky Boots* and *The Nutty Professor*.

THE JOHN F. KENNEDY CENTER FOR THE PERFORMING ARTS (*Producer*), David M. Rubenstein, chairman; Michael M. Kaiser, president; Max Woodward, Vice President; is America's living memorial to President Kennedy. It is the nation's busiest performing arts

facility and annually hosts approximately 2,000 performances for audiences totaling nearly two million. The Center presents performances of music, dance, theatre and opera; supports artists in the creation of new work; and serves the nation as a leader in arts and arts management education. In its 41-year history, the Center has produced and co-produced dozens of Broadway productions, including the original production of *Annie*, the American premiere of *Les Misérables* and the 2009 revival of *Ragtime*. In 2002, it produced the *Sondheim Celebration* (including six of the composers musicals) and in 2007, *August Wilson's 20th Century* (Wilson's complete ten-play cycle). The Kennedy Center presents the most ambitious ballet and modern dance series in the nation, and produces a comprehensive jazz program and a vibrant chamber music series. Its affiliated companies include the National Symphony Orchestra and Washington National Opera. The Center stages free performances of music, dance and theatre every evening at 6 p.m. on the Millennium Stage which are streamed live at www.kennedy-center.org.

NEDERLANDER PRESENTATIONS, INC. (*Producer*) is a production division of the multinational theatrical entities owned by James M. and James L. Nederlander. Prominent for three generations in management and operation of theatres and productions of distinguished entertainment, they have produced innumerable plays and musicals, operas, ballets and concerts. They also own a national chain of legitimate theatres. Currently in their Broadway venues are *Evita*, *Ghost*, *Jesus Christ Superstar*, *The Lion King*, *The Gershwins' Porgy and Bess*, *Priscilla Queen of the Desert* and *Wicked*.

ADRIENNE ARSHT (*Producer*), treasurer of the Kennedy Center Board of Directors, was Chairman of Kennedy Center Productions Inc. and worked with Roger Stevens producing over 100 shows. She supported theatre through The Actors Company Theatre in New York and, with her

generous donation, Miami's performing arts center is called the Adrienne Arsht Center for the Performing Arts.

HRH FOUNDATION (*Sponsor*). The HRH Foundation's principle focus is to support visual and performing arts nonprofit organizations. The foundation has supported the Kennedy Center's programs since 1999, especially focusing on the Center's international festivals. The foundation also underwrites the video presentations that are produced in conjunction with major international exhibitions at the National Gallery of Art. The foundation is pleased to be a contributing supporter of *Follies*.

ALLAN WILLIAMS (*Executive Producer*) has spent the last 30 years managing, booking and marketing theatrical productions on Broadway and throughout North America. He is honored to be working with the Kennedy Center on this production of *Follies*.

ACTORS' EQUITY ASSOCIATION (AEA), founded in 1913, represents more than 49,000 actors and stage managers in the United States. Equity seeks to advance, promote and foster the art of live theatre as an essential component of our society. Equity negotiates wages and working conditions, providing a wide range of benefits, including health and pension plans. AEA is a member of the AFL-CIO and is affiliated with FIA, an international organization of performing arts unions. The Equity emblem is our mark of excellence. www.actorsequity.org

CENTER THEATRE GROUP



MICHAEL RITCHIE (*Artistic Director*) is in his seventh season as Center Theatre Group's Artistic Director, and has led over 100 productions to the Ahmanson,

Taper and Douglas stages since his arrival in 2005. From 1996 to 2004 Michael was the Producer of the

Williamstown Theatre Festival and prior to that he was a Production Stage Manager in NYC. At CTG, he premiered six musicals that moved to Broadway—*The Drowsy Chaperone* (which won 13 Tony Award nominations), *Curtains* (eight Tony nominations), *13, 9 to 5: The Musical*, *Bloody Bloody Andrew Jackson* and *Leap of Faith*. He has produced 30 world premieres including the musicals *Minsky's*, *Venice* and *Sleeping Beauty Wakes*, and the plays *Bengal Tiger at the Baghdad Zoo* (a Pulitzer Prize finalist that also moved to Broadway), *Water & Power* and *Yellow Face*, and he presented a broad range of plays and musicals ranging from *Dead End* to *The Black Rider* to *Edward Scissorhands* to blockbusters such as *God of Carnage*, *Mary Poppins*, *Jersey Boys* and *August: Osage County*. In addition, Michael inaugurated CTG's New Play Production Program, designed to foster the development and production of new work.



EDWARD L. RADA
(*Managing Director*) returned to Center Theatre Group last year after previously serving as CTG's Chief Financial Officer for 12 years

(1996 – 2008). Rada spent the past three years as President of the Music Center Foundation, a non-profit corporation that holds and invests the endowment and reserve funds for the Music Center and its resident companies (including CTG). Prior to his years at CTG, he was the Director of Finance at The Old Globe in San Diego and principal of Rada & Associates, an accounting firm that specialized in entertainment-related non-profit organizations and theatrical productions. He is a graduate of Occidental College in Los Angeles with numerous post-graduate coursework and credentials. He currently serves on the board of trustees for the pension, health and welfare and 401(k) plans of I.A.T.S.E. Local 33 Stagehands Union, on the board of directors of Theatre@Boston Court, and on the board of United

Support of Artists for Africa/USA for Africa, among other affiliations.



DOUGLAS C. BAKER (*Producing Director*) is now in his 21st season at CTG. Previously, he managed Broadway and touring productions including *Tru*, *Born*

Yesterday, *The Gospel at Colonus*, *Annie*, *A Chorus Line*, *Working*, *The Wiz* and *Legends!* starring Mary Martin and Carol Channing which premiered at the Ahmanson Theatre in 1986.

Baker is a graduate of Albion College, is an active member of the Broadway League, the Independent Presenters Network and is a proud member of the Association of Theatrical Press Agents and Managers.



KELLEY KIRKPATRICK (*Associate Artistic Director*). Since arriving at CTG in 2005, Kelley has produced over 35 productions at the Ahmanson, Mark

Taper Forum and Kirk Douglas Theatres, many of which have gone on to have future lives on Broadway, off-Broadway and beyond. He has had the privilege of collaborating with local and national theatre artists including The Civilians, Rainpan 43, David Henry Hwang, Ken Roht, Eric Rosen, Matt Sax, Lisa Kron, Michael Friedman, Culture Clash, Alex Timbers, Rude Mechs, Itamar Moses, Melissa James Gibson, Danai Gurira, Nick Jones, Roberto Aquirre-Sacasa and Roger Guenveur Smith.



GORDON DAVIDSON (*Founding Artistic Director*) led the Taper throughout its first 38 seasons, guiding over 300 productions to its stage and winning

countless awards for himself and the theatre — including the Tony Award for theatrical excellence, Margo Jones

Award, The Governor's Award for the Arts and a Guggenheim fellowship. *The Kentucky Cycle* and *Angels in America* (Part One) won the Pulitzer in consecutive years and, in 1994, three of the four plays nominated for the Tony Award for Best Play were from the Taper (*Angels in America* won). In 1989 Gordon took over the Ahmanson and, in 2004, he produced the inaugural season in the Kirk Douglas Theatre.

Additional staff for *Follies*

GENERAL MANAGEMENT
ALAN WASSER ASSOCIATES
Alan Wasser Allan Williams
Mark Shackel Aaron Lustbader

NATIONAL PRESS REPRESENTATIVE
BONEAU/BRYAN-BROWN
Adrian Bryan-Brown Heath Schwartz
Michael Strassheim

COMPANY MANAGER
Mark Rozzano

CASTING
LAURA STANCZYK CASTING, CSA
Meryl Ballew, Tony Tilli, Alicia Newkirk,
Anika Chapin, Kate Freeman, Sarah Johnston

PRODUCTION MANAGEMENT
JUNIPER STREET PRODUCTIONS
Hillary Blanken Guy Kwan
Ana Rose Greene Joseph DeLuise

Production Stage ManagerRay Gin
Stage Managers Lora K. Powell, Lee Micklin
Assistant Choreographer/Dance Captain
Sara Edwards
Assistant Dance Captain.....Mathew deGuzman
Assistant Company Manager Kevin L. Cordova
Associate Scenic Designer.....Erica Hemminger
Assistant Scenic Designers..... Brett Banakis,
Shoko Kambara
Associate Costume Designer.....Matthew Pachtman
Costume Associate.....Lynne Baccus
Associate Lighting Designer.....Yael Lubetsky
Assistant Lighting Designers.....Joel Shier,
Kathleen Dobbins, Peter Hoerburger
Associate Sound Designer.....Jana Hoglund
Moving Lighting Programmer.....Marc Polimeni
Production Carpenter..... Fred Gallo
Head Carpenter.....Scott "Gus" Poitras
Flyman.....John Eckert
Advance Carpenter.....David J. Elmer
Production Electricians.....Randall Zaibek,
James Fedigan
Head Electrician.....Chris Robinson
Production Properties Supervisor.....Andrew Meeker
Properties Coordinators.....Matthew Elias Hodges,
Jeremy Lydic
Production Sound Engineer.....Patrick Pummill
Wardrobe Supervisor.....Phillip Rolfe
Advance Wardrobe.....Rick Kelly
Associate Hair/Wig Designer/
Hair Supervisor.....Richard Orton
Make-up Designer.....Joe Dulude
Music Coordinator..... John Miller
Assistant to John Miller.....Nichole Jennino
Keyboard Programmer.....Randy Cohen
Advertising (NY).....Serino/Coyne
Sandy Block, Greg Corradetti,
Robert Jones, Danielle Boyle,
David Barrineau

Legal Counsel..... Elliot H. Brown, Jonathan A. Lonner/
Franklin, Weinrib, Rudell & Vassallo, P.C.
AccountingRosenberg, Neuwirth &
Kuchner/Marina Flom
General Management Associates.....Lane Marsh,
Thom Mitchell
General Management OfficeHilary Ackerman,
Mark Barna, Jake Hirzel, Nina Lutwick,
Jennifer O'Connor
Production ArtworkFrank Verlizzo
Production Photographer NYJoan Marcus
Production Photographer LACraig Schwartz
Assistant to Mr. Sondheim..... Steve Clar
InsuranceVentura Insurance Brokerage
Banking..... Signature Bank/Barbara von Borstel,
Margaret Monigan
PayrollCastellana Services, Inc.

CREDITS AND ACKNOWLEDGEMENTS
Scenery fabricated and painted by Global Scenic
Services, Inc. Bridgeport, CT. Show control and scenic
motion control featuring Stage Command® Systems
by PRG Scenic Technologies, a division of Production
Resource Group, LLC, New Windsor, NY. Lighting
equipment by PRG Lighting. Audio equipment by PRG
Audio. Costumes by Arel Studio, Inc.; Armando Farfan,
Jr.; Carelli Costumes, Inc.; Donna Langman Costumes;
Euroco Costumes, Inc.; Lynne Baccus; Michael
Stanton; Primadonna; Stephen Stratton; Thomas Slack;
Tricorn Costumes, Inc. Millinery by Lynne Mackey
Studios and Rodney Gordon, Inc. Costume fabric
dyeing and painting by Jeff Fender Studios. Costume
beading by Polly Isham Kinney, Bessie Nelsen, Douglas
Spano, Mystic Beading, Silvia's Costumes and Douglas
Esselmann. Custom costume, wigs by Independent
Wig Co. Metalwork by Den Design Studio. Custom
footwear by LaDuca Shoes and Worldtone Dance.
Women's hosiery provided by Bra*Tenders. Make up
provided by Make Up for Ever.

THE JOHN F. KENNEDY CENTER FOR
THE PERFORMING ARTS
STAFF FOR FOLLIES

General ManagerJohn J. Hance
Associate General Manager Joe Christopher
Executive Vice PresidentClaudette Donlon
Vice President for Marketing and Sales Services
David Kitto
Vice President for DevelopmentMarie Mattson
Vice President of FinanceLynne Pratt
General Counsel Maria Kersten
Director of Press Office John Dow*
Press Representative Stephanie O'Neill

*Member of ATPAM

www.FolliesBroadway.com



The actors and stage managers employed
in this production are members of
Actors' Equity Association, the union
of professional actors and stage managers
in the United States.



The Director and Choreographer are
members of the Stage Directors and
Choreographers Society, a national theatrical
labor union.



United Scenic Artists represents
the designers and scenic painters
for the American theatre.



The musicians employed in this production
are members of the American Federation
of Musicians of the United States and
Canada.



The following employees are represented by
the International Alliance of Theatrical Stage
Employees, Moving Picture Machine
Operators, Artists and Allied Crafts of the
United States, its Territories and Canada,
AFL-CIO, CLC: Stage Crew Locals 33; Local Treasurers
and Ticket Sellers Local 857; Wardrobe Crew Local 768;
Make-up Artists and Hair Stylists Local 706.



Dramatists Guild of America
the professional association of playwrights, composers & lyricists

Dramatists Guild of America the professional
association of playwrights, composers and lyricists.



The Press Agents, Company and
House Managers employed in
this production are represented by the Association of
Theatrical Press Agents and Managers.



This production is produced
by a member of The Broadway
League in collaboration with our
professional union-represented employees.

Center Theatre Group is a member of the American
Arts Alliance, the Broadway League, Independent
Producers' Network (IPN), LA Stage Alliance, League
of Resident Theatres (LORT), National Alliance
for Musical Theatre (NAMT) and the Theatre
Communications Group (TCG).



Latecomers will be seated at the discretion of the management. Patrons with disabilities: wheelchair seating is available in a variety of theatre locations.
When ordering your tickets, please indicate any special needs. For our hearing-impaired guests, the theatre is equipped with listening devices; please contact an usher for assistance.

CENTER THEATRE GROUP L.A.'s Theatre Company

MICHAEL RITCHIE, Artistic Director EDWARD L. RADA, Managing Director

DOUGLAS C. BAKER, Producing Director

ARTISTIC

NEEL KELLER Associate Artistic Director
KELLEY KIRKPATRICK Associate Artistic Director
DIANE RODRIGUEZ Associate Producer/Director of New Play Production
PIER CARLO TALENTI Resident Dramaturg/Literary Manager
LINDSAY ALLBAUGH Producing Associate
MALCOLM K. DARRELL New Play Production Associate
JOY MEADS Literary Associate
ERIKA SELLIN Director of Casting
MARK B. SIMON Casting Director
ANDY CROCKER Casting Associate
SUZANNE FRANCINE MILLER Casting Administrator
STEVEN PIESZCHALSKI Casting Intern

THE BURGLARS OF HAMM, TANYA BARFIELD, THE CIVILIANS, STEVE CUIFFO, KRISTOFFER DIAZ, JUSTIN ELLINGTON, STEVEN EPP, ELLEN FITZHUGH, GINA GIONFRIDDO, SAM GOLD, DANAI GURIRA, JOE HORTUA, NICK JONES, RAJIV JOSEPH, MICHAEL JOHN LACHIUSA, TREY LYFORD, DAVE MALLOY, LAURAL MEADE, JULIE MARIE MYATT (FADIMAN), DAN O'BRIEN, EVANGELINE ORDAZ, WILL POWER, MATT SAX, DOMINIQUE SERRAND, GEOFF SOBELLE, UNIVERSES Commissioned Artists

PADRAIC DUFFY LARISSA FASTHORSE, SIGRID GILMER, PRINCE GOMOLVILAS, JENNIFER HALEY, MATT SAX, STEVEN YOCKEY CTG Writers' Workshop Members

EDUCATION AND COMMUNITY PARTNERSHIPS

LESLIE K. JOHNSON Director of Education and Community Partnerships
DEBRA PIVER Associate Director of Education and Community Partnerships
TRACI CHO Director of School Partnerships
PATRICIA GARZA Senior Manager for Education and Community Partnership
CAMILLE SCHENKMAN Educational Programs Manager
CARLA CORONA Educational Programs Associate
DAN HARPER Educational Programs Associate
ASHLEY OPSTAD Educational Programs Associate
KELLY CHRIST Educational Communications Coordinator
VICTOR VAZQUEZ Educational Services Coordinator
SHANNON WINSTON Assistant to the Director of Education and Community Partnerships

MANAGEMENT & ADMINISTRATION

NAUSICCA STERGIU General Manager (Mark Taper Forum, Kirk Douglas Theatre)
JEFFREY UPAH General Manager (Ahmanson Theatre)
SUZANNE HEE MAYBERRY Assistant General Manager (Mark Taper Forum)
KATIE BRUNER SOFF Assistant General Manager (Kirk Douglas Theatre, New Play Production)
ALANA BEIDELMAN Executive Assistant to Managing Director
LIZ LYDIC Assistant to Producing Director

ERIC SIMS Operations Manager (Kirk Douglas Theatre)
TOM BURMESTER Performance Manager (Kirk Douglas Theatre)
LAUREN BAXA Assistant Performance Manager (Kirk Douglas Theatre)
MIKE KINDLE Facilities Assistant (Kirk Douglas Theatre)
SONDRA MAYER Concessions Manager (Kirk Douglas Theatre)

PRODUCTION

ALYS E. HOLDEN Director of Production

SHAWN ANDERSON Master Carpenter (Ahmanson Theatre)
ANDREW W. ARNOLD Flyman (Ahmanson Theatre)
JIM BERGER Master Electrician (Ahmanson Theatre)
STAN STEELMON Master Propertyman (Ahmanson Theatre)
ROBERT SMITH Master Soundman (Ahmanson Theatre)
MICHAEL GARDNER Wardrobe Supervisor (Ahmanson Theatre)
PATRICE MIRANDA Hair Supervisor (Ahmanson Theatre)
CHRISTINE L. COX House Manager (Ahmanson Theatre)

JOE HAMLIN Technical Director
CHAD SMITH Assistant Technical Director

DAWN HOLISKI Shop Director
ANDREW THIELS Prop Manager
MERRIANNE NEDREBERG Prop Lead
SARAH KRANIN Prop Shopper
CANDICE CAIN Costume Shop Director
DIAN CAMARILLO Costume Shop Coordinator
KATHY CHRISTIANSEN Draper
DIANNE K. GRAEBNER Milliner/Crafts/Dyer
ELIZABETH LEONARD Production Operations Manager
JULIO A. CUELLAR Driver/Custodian

MELODY MATTOS Production Business Manager
JENNIFER ACHTERBERG Production and Facilities Manager
AMANDA CAMPBELL Production Administrator

JONATHAN BARLOW LEE Production Manager (Mark Taper Forum)
KELSEY MARTINEZ Assistant Production Manager (Mark Taper Forum)
EMMET KAISER Master Carpenter (Mark Taper Forum)
ROBERT RUBY Master Propertyman (Mark Taper Forum)
WILLIAM MORNER Master Electrician (Mark Taper Forum)
BONES MALONE Master Soundman (Mark Taper Forum)
DENNIS SEETOO Wardrobe Supervisor (Mark Taper Forum)
RICK GEYER Hair & Make-up Supervisor (Mark Taper Forum)
LINDA WALKER House Manager (Mark Taper Forum)
MARA HOLLAND Stage Door (Mark Taper Forum)

CELESTE SANTAMASSINO Production Manager (Kirk Douglas Theatre)
JAMIE THOMA Assistant Production Manager (Kirk Douglas Theatre)
RICHARD PETERSON Master Electrician (Kirk Douglas Theatre)
ADAM PHALEN Head Audio (Kirk Douglas Theatre)

FINANCE, INFORMATION SYSTEMS AND HUMAN RESOURCES

MICHAEL F. THOMPSON Chief Financial Officer
DANA KELLY Contoller
JANIS BOWBEER Assistant Contoller
FELICISIMA LAPID Accounts Payable Supervisor
ALEGRIA SENA Staff Accountant
DANNY LAMPSON Staff Accountant

YUEN KI "ANNIE" LAW Payroll Manager
MARIANA GONZALEZ Payroll Specialist

DAVE ALTON Chief Information Officer
STAN GRUSHESKY Director of Information Systems
SEAN PINTO Patron Database Administrator
SCOTT LANDES Information Systems Analyst

MICHELLE MACGAFFEY Director of Human Resources
MADRIO FLEEK Interim Senior Human Resources Generalist
DAMON JOSEPH Office Services
SINGER LEWAK, LLP Auditor
MICHAEL C. DONALDSON, LISA A. CALLIF Legal Counsel
GIBSON, DUNN & CRUTCHER Legal Counsel

DEVELOPMENT

YVONNE CARLSON BELL Director of Development
PATRICK OWEN Deputy Director of Development
NATALIE BERGESON Director of Donor Contributions
JEAN KLING Director of Institutional Support
LIZ LIN Director of Donor Communications
CHARITY WU Director of Individual Giving
BECKY BIRDSONG Associate Director of Donor Relations
SANDRA EBEJER Institutional Giving Officer
KIM LA TOUR Corporate Giving Officer
MANDY RATLIFF Development Database Manager
RICK LEE Donor Contributions Supervisor
ANA ROSE O'HALLORAN Donor Marketing Manager
JENNIFER RYEN Special Gifts Manager
JAMIE CATALDO Grants Writer
JENNIFER CHAN Development Assistant
DONALD JOLLY Donor Relations Associate for the Inner Circle
MANDI OR Special Events Coordinator
HELEN H. OTA Executive Assistant to the Development Director
MARIA PAREDES Donor Relations Associate for The Guild
COURTNEY ROBERTSON Institutional Giving Associate
ERIN SCHLABACH Donor Contributions Associate
ELIZABETH WACHTEL Special Gifts Assistant

JASON BASS, AL BERMAN, JOHN CARDELLO, ANN CAVOTO, GINA EAST, JESSICA NASH, HOLLY RAMOS, NICOLE SCIPIONE, BILL WALTON Donor Advisors
ADAM BURCH, KARLA GALVEZ, DEBORAH REED Donor Services Associates
ANNE BRUNER, MARIA CHESTER, JULIE NADAL, LUCY TEW Development Volunteers

MARKETING & COMMUNICATIONS

JIM ROYCE Director of Marketing and Communications
NANCY HEREFORD Director of Media and Communications
PHYLLIS MOBERLY Media and Communications Associate
JASON MARTIN Media and Communications Associate
TAYLOR RAE JOHNSON, SHANNON SMITH Media and Communications Assistants

CHRISTOPHER KOMURO Art Director
IRENE KANESHIRO, NISHITA DOSHI Senior Designers
HARUKA HAYAKAWA Graphic Designer
TERESA ENGLISH Junior Graphic Designer

MICHAEL ANDERSON Advertising & Promotions Director
ANDREW DARCEY Advertising Associate
AMELIA HEAPE Associate Director of Marketing
JOEY OLIVA Marketing Associate
ROSE POIRIER Webmaster
KIM VARHOLA Marketing Manager, Events & Partnerships
KAREN VOCK Interim Marketing Manager, Events & Partnerships
JIM HALLORAN Marketing Coordinator

TICKET SALES AND SERVICES

SHAWN ROBERTSON Ticket Sales Director
SKYPP CABANAS Ticket Operations Coordinator

SANDY CZUBIAK Audience and Subscriber Services Manager
JENNIFER BAKER, CHERYL HAWKER, RICHARD RAGSDALE Audience Services Supervisors
ALICE CHEN Audience Services Asst. Supervisor
SAM AARON Audience Services Sales Associate

JEREMIE ARENCIBIA, RJ CANTU, CARLOS D. CHAVEZ, JR., PETER COLBURN, HESPER COLOHAN, DONALD CRANDALL, EMIL LIN, KAY LOCHARD, JUSTINE PEREZ, DEBORAH REED, LEX SAVKO, DANNY SCHMITZ, CRIS SPACCA, TRAVIS WOOD Audience Services Representatives

DANUTA SIEMAK Subscriber Services Supervisor
CHRISTINA GUTIERREZ Subscriber Services Asst. Supervisor
LIGIA PISTE, CELIA RIVAS Subscriber Services Senior Representatives
IRENE CHUANG, PETER STALOCH Subscriber Services Representatives

SARAH K. GONTA Box Office Treasurer
KISHISA ROSS, GISELE FRAZEUR Assistant Treasurers
YULIZA BARRAZA, ANGELICA CARBAJAL, MICHAEL KEMPISTY, LEROY PAWLOWSKI, MICHAEL SALTZMAN, GEORGE SOVIAK Box Office Staff

MICHAEL ZOLDESSY Account Sales Manager
EILEEN ROBERTS Associate Sales Associate

KERRY KORF Priority Services Director
SUSAN F. TULLER Priority Services Operations Manager
JAY BURNS Priority Services Sales Manager
PAUL CUEN Priority Services Manager

HOWARD ASKENASE, CAROLE BAXTER, DEREK BIDDLE, STEVE BRIAN, RUSTY COLLINS, SUZANNE "MAGGIE" DODD, MARC "BYRON" DROTMAN, LOU GEORGE, KATE HALL, JERRY JOHNSTON, LISA KESSLER, SHEP KOSTER, LES KUYKENDALL, CANDICE MCDOWELL, ELENA MUSLAR, EDWARD "MAX" RAZOR, JASMINE REGALA, KEN SALLEY, BOBBI LYNN SCOTT, DAVE SHALANSKY, MICHAEL SMITH, JEFFREY STUBBLEFIELD, QUINN SULLIVAN, KATHRYN TABB, DIANE WARD, JIM WATERMAN Representatives