

## 2017/18 SEASON

FIRST SEASON PRODUCTION

### **BIG NIGHT**

By Paul Rudnick

Directed by Walter Bobbie

World Premiere

**Sep 10 – Oct 8, 2017**

SECOND SEASON PRODUCTION

### **SPAMILTON**

Created, Written & Directed by

Gerard Alessandrini

West Coast Premiere

**Nov 5, 2017 – Jan 7, 2018**

THIRD SEASON PRODUCTION

### **ELLIOT, A SOLDIER'S FUGUE**

By Quiara Alegria Hudes

Directed by Shishir Kurup

**Jan 27 – Feb 25, 2018**

FOURTH SEASON PRODUCTION

### **BLOCK PARTY**

Celebrating Los Angeles Theatre

### **BLOODLETTING**

from Playwrights' Arena

By Boni B. Alvarez

Directed by Jon Lawrence Rivera

**Mar 29 – Apr 8, 2018**

### **AMERYKA**

from Critical Mass Performance Group

Written and Directed

by Nancy Keystone

**Apr 19–29, 2018**

### **DIE, MOMMIE, DIE!**

from Celebration Theatre

By Charles Busch

Directed by Ryan Bergmann

**May 10–20, 2018**

**KIRK  
DOUGLAS  
THEATRE**

Photo by Luke Fontana

# ELLIOT, A SOLDIER'S FUGUE

**CENTER  
THEATRE  
GROUP**

*We would like to take this opportunity to thank the following donors who have made extraordinary investments in Center Theatre Group's future. Their support will ensure that Center Theatre Group—and Los Angeles audiences and artists—enjoy another 50 years of theatrical excellence.*

---

**GIFTS OF \$5,000,000 AND ABOVE**

Brindell Roberts Gottlieb  
Kirk & Anne Douglas  
Ahmanson Foundation

---

**GIFTS OF \$1,000,000 AND ABOVE**

Anonymous  
Laura & James Rosenwald & Orinoco Foundation  
Renee & Meyer Lusk  
Sue Tsao  
The Annenberg Foundation  
Anonymous  
Edgerton Foundation  
Kiki & David Gindler  
Patricia Glaser & Sam Mudie  
Aliza Karney Guren & Marc Guren  
Ann & Stephen F. Hinchliffe, Jr.  
The Louis and Harold Price Foundation

---

**GIFTS OF \$500,000 AND ABOVE**

Deena & Edward Nahmias  
Amy Forbes & Andrew Murr  
Jerry & Terri Kohl  
Michael Ritchie & Kate Burton  
Elliott Sernel

---

**GIFTS OF \$250,000 AND ABOVE**

Joni & Miles Benickes  
Donna Schweers & Tom Geiser

---

Nancy & Eric Garen  
Glenn & Andrea Sonnenberg  
Anonymous  
The Ralph M. Parsons Foundation  
Diana Buckhantz & the Vladimir and Araxia Buckhantz Foundation  
Vicki King  
Louise Moriarty  
Thomas Safran  
Judie Stein & Stein Family Foundation

---

**GIFTS OF \$100,000 AND ABOVE**

Jody & David Lippman  
The Campagna Family  
Deidra Norman Schumann  
Donna & John Sussman  
Yvonne & Derek Bell  
Mara & Joseph Carieri  
Friars Charitable Foundation  
Cindy & Gary Frischling  
Bill Resnick & Michael Stubbs  
Cheryl A. Shepherd

---

**GIFTS OF \$50,000 AND ABOVE**

Anonymous  
Anne Bruner & Jim Bremner  
Patrick Owen & Norman Dixon  
Carol & Stephen Rountree  
Sunshine Stone  
Peter & Iona Tompkins  
Hope Landis Warner

---

Center Theatre Group would also like to thank the following donors for making commitments to the **50<sup>TH</sup> Anniversary Campaign** through legacy gifts to our Endowment:

***Legacy Gifts*****\$1,000,000 AND ABOVE**

Judith & Thomas Beckmen  
Martin Massman  
Diane & Leon Morton

**\$500,000 AND ABOVE**

Richard & Norma Camp  
Susan A. Grode  
Linda S. Peterson

**\$250,000 AND ABOVE**

Pamela & Dennis Beck  
Shirley & Irving Ashkenas  
Bill Cohn & Dan Miller  
Maggy Simon  
I.H. Sutnick

**OTHER LEGACY GIFTS**

Maynard & Linda Brittan-Traub-Brittan Family Trust  
Steven Llanusa & Glenn Miya, M.D.  
Gloria Lothrop  
Carol & Douglas Mancino  
Renee & Robert Nunn  
Nan Rae  
Randy & Bruce Ross  
Wes Schaefer & Cathy King-Schaefer  
Margaret White





**MICHAEL RITCHIE** Artistic Director | **STEPHEN D. ROUNTREE** Managing Director | **DOUGLAS C. BAKER** Producing Director  
**GORDON DAVIDSON** Founding Artistic Director

Presents

# ELLIOT, A SOLDIER'S FUGUE

Written by

**Quiara Alegría Hudes**

With

**Rubén Garfias**

**Peter Mendoza**

**Jason Manuel Olazábal**

**Caro Zeller**

Scenic Design

**Sibyl Wickersheimer**

Costume Design

**Raquel Barreto**

Lighting Design

**Geoff Korf**

Sound Design

**John Nobori**

Casting

**Rosalinda Morales**  
**Pauline O'con, CSA**

Associate Artistic Director

**Kelley Kirkpatrick**

Production Stage Manager

**Maggie Swing**

Directed by

**Shishir Kurup**

JANUARY 27 – FEBRUARY 25, 2018

**KIRK DOUGLAS THEATRE**

*Elliot, A Soldier's Fugue* is presented by special arrangement with Dramatists Play Service, Inc, New York.

Original production produced by Page Seventy-Three Productions Inc.

# CAST (In Order of Appearance)

Ginny.....**Caro Zeller**  
Pop.....**Jason Manuel Olazábal**  
Grandpop.....**Rubén Garfias**  
Elliot.....**Peter Mendoza**

## Intermission

*Elliot, A Soldier's Fugue* will be performed without an intermission.

## Stage Manager

Amanda Novoa

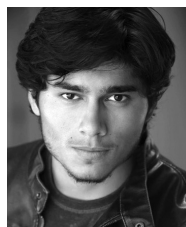
Please turn off all electronic devices such as cellular phones and watch alarms. The use of any recording device, either audio or video, and the taking of photographs, with or without flash, is strictly prohibited.

## WHO'S WHO



**RUBÉN GARFIAS** (*Grandpop*). Center Theatre Group: *Lydia* (Mark Taper Forum). Other L.A.: *Taming of La Shrew* (LATC), *El Grande de Coca-Cola* (Odyssey Theatre), *Is It Hot in Here...* (Egyptian Arena), *Up From The Downs* (Watts Village Theater), *Where Has Tommy Flowers Gone?* (Nosotros Theater). New York: *Americans or Last Tango in Huahuateno* (San Francisco

Mime Troupe), *Soldado Razo* (El Teatro Campesino). Film: *Get Smart's Bruce and Lloyd: Out of Control*, *The Perfect Game*, *Ladrón que roba a ladrón*, *Redrum*, *Insidious: Chapter 3*, *GB: 2525*, *American Blend*. Television: *The Good Doctor*, *Designated Survivor*, *Stitchers*, *East Los High*, *Brooklyn Nine-Nine*, *Criminal Minds*.



**PETER MENDOZA** (*Elliot*). Born and raised in East Los Angeles; studied acting, dancing, and stunt choreography at East Los Angeles College. Theatre: *Zoot Suit* (u/s Henry Reyna) at the Mark Taper Forum, *Salon Mexico* (Paco) and *El Burlador de Sevilla* (Don Juan) at Bilingual Foundation of the Arts, and *Measure for Measure* (Angelo) at the ELAC

Performing Arts Center. Television: *Shooter* on USA, *NCIS* on CBS, *Snowfall* on FX, and *Casual* on Hulu. Film: *Dead Bullet*, *Nathan's Kingdom*, *Parasites*, *TECATO*, and *Ana Maria in Novela Land*. He volunteers at San Gabriel High School mentoring students in acting. Follow on Instagram: @petertheatre



**JASON MANUEL OLAZÁBAL** (*Pop*). Broadway: *Anna in the Tropics*, *Julius Caesar*. Off-Broadway: *Massacre* (*Sing to Your Children*), *Guinea Pig Solo* (The Public Theater/LAByrinth Theater), *The Phantom Lady* (The Pearl Theatre), *Where's My Money?* (Manhattan Theatre Club). Regional: *Anna in the Tropics* (Arena Stage), *Life Is a Dream* (South Coast Rep), *Barcelona* (CATF). Los Angeles: *Short Eyes* (LATC). Film: *I Don't Feel at Home in This World Anymore*. (Grand Jury Award winner, Sundance 2017), *Bad Boys II*, *Inside Man*. Select TV: Dante Esquivel on *Fear the Walking Dead*, Ramon Prado on *Dexter* (SAG Award nomination, Best Ensemble), Alex Cruz on *Make It or Break It*, *Madam Secretary*, *Elementary*, *Castle*, *Scorpion*, *NCIS: LA*, *Blue Bloods*. MFA, UMKC. Jason is a member of NYC's LAByrinth Theater Company.



**CARO ZELLER** (*Ginny*). National tour: *Placas: The Most Dangerous Tattoo* (Pregones Theater NYC, GALA Theatre DC, Salinas, Laney College, LATC, Su Teatro, Merced, San Diego, Long Beach). Regional: *Water by the Spoonful* (TheatreSquared), *La mer* (TSFY LA Phil), *Fefu and Her Friends* (Circle X and JUST Toys Production at Hollyhock House), *The Devil's Wife* (Skylight Theatre), *Nicky* (Coeurage Theatre), *Paloma* (LATC), *American Night: The Ballad of Juan José* (L.A. Theatre Works), *Swarm Cell* (Greenway Court), *The Anatomy of Gazellas* (Playwrights' Arena), *Scar Tissue* (COA), *Romeo and Juliet* (Shakespeare Center of LA), *Blood Wedding* (Bilingual Foundation of the Arts). Film: *Bruising for Besos*, *Kiss Me*.



**QUIARA ALEGRÍA HUDES** (*Playwright*) is a playwright, author, strong wife and mother of two, barrio feminist, and native of West Philly, USA. Next up is her musical *Miss You Like Hell* at New York's Public Theater starting in March. Previously her play *Water by the Spoonful* won the 2012 Pulitzer Prize for Drama. Hudes co-authored Broadway's

*In the Heights* with Lin-Manuel Miranda, which received the Tony Award for Best Musical. Hudes is a proud alum and hall of fame inductee at Philadelphia's Central High School. She curates *Emancipated Stories*, an online anthology of works written behind bars. The page-long pieces put a personal face on mass incarceration. Instagram: emancipated\_stories\_project



**SHISHIR KURUP** (*Director*). Writer: *On Caring for the Beast* (Currican Theatre); *Merchant on Venice* (Lark Theatre, Silk Road Rising); *DNA Trail* (Silk Road Rising); *Bliss Point*, *Ghurba*, *Birthday of the Century* (Cornerstone Theater Company). Composer: *Too Noble Brothers* (The Public Theater); *The Good Person of New Haven* (Long Wharf Theatre); *Medea* (Oregon Shakespeare Festival); *Medea/Macbeth/Cinderella* (Yale Repertory Theatre); *As You Like It* (The Pasadena Playhouse). Director: *The Happiest Song Plays Last*, *Water by the Spoonful*, Michael Garcés' *Magic Fruit*, James McManus' *Love on San Pedro*, Sarah Ruhl's *Demeter in the City*, Michael Garcés' *Los Illegals*. Writer/director/composer: *An Antigone Story*. Co-director/composer:

*Everyman in the Mall*. Film/TV actor: *True Blood*, *NCIS*, *Bones*, *Lost*, *Heroes*, *Sleeper Cell*, *NYPD Blue*, *Monk*, *Alias*, *The West Wing*. Awards: TIME/A.S.K. Award, Princess Grace Award, Kennedy Center Award, TCG/Alan Schneider Directing Award finalist, Herb Alpert Award nominee, LA Weekly Award, LA Stage Alliance Ovation Award nominee, Garland Awards, Drama-Logue Awards. Ensemble member, Cornerstone Theater Company. Education: MFA, University of California, San Diego.



**SIBYL WICKERSHEIMER** (*Scenic Designer*). Center Theatre Group: *Eclipsed*, *Of Equal Measure*, *No Child*, *The Stones*. Other L.A.: *Barbecue*, *Sex With Strangers*, *Build*, *Wrecks*, *Some Girl(s)* (Geffen Playhouse); *Reunion*, *Our Mother's Brief Affair*, *A Little Night Music* (South Coast Rep); Eric Idle's *What About Dick?* (Orpheum Theatre); Encounters Stage

for Natural History Museum of Los Angeles County. Regional: Steppenwolf Theatre Company, Oregon Shakespeare Festival, American Conservatory Theater, Woolly Mammoth Theatre Company, Seattle Repertory Theatre, Arizona Theatre Company, Lookingglass Theatre Company, Portland Center Stage, Berkeley Repertory Theatre, South Coast Repertory, Geffen Playhouse, Utah Musical Theatre. International: *1984* (dir. Tim Robbins) and *The Trial of the Catonsville Nine* (The Actors' Gang). Opera: *Figaro 90210* (LA Opera), *Crescent City*, *a hyperopera* (The Industry). Art exhibitions: RAID Projects, Hi-Lite, Weekend, The New Chinatown Barber Shop, Gallery 825, Shoshana Wayne Gallery, Andrew Shire Gallery, Hatch Gallery, Latch, Pacific Asia Museum. Associate Professor of Set Design at the USC School of Dramatic Arts.



**RAQUEL BARRETO** (*Costume Designer*). Regional: *Watch on the Rhine* (Guthrie Theater, Berkeley Rep); *Julius Caesar*, *The River Bride*, *Roe*, *Pericles*, *The Happiest Song Plays Last*, and *Water by the Spoonful* (Oregon Shakespeare Festival); *Roe* (Arena Stage, Berkeley Rep); *The Glass Menagerie*, *Uncle Vanya*, *Romeo and Juliet*, *Pericles*,

and *The Triumph of Love* (California Shakespeare Theater); *Lady Day at Emerson's Bar and Grill* (Actors Theatre of Louisville); *The Underpants* (Syracuse Stage, Guild Hall); *Nero* (Magic Theater). Los Angeles: *Water by the Spoonful* (Mark Taper Forum); *Mojada* (Getty Villa); *Bliss Point*, *SEED* (Cornerstone Theater Company); *Hope*, *La Victima* (Latino Theater Company); *Kiss*, *Anna Christie*, *Passion Play*, *Ivanov* (Odyssey Theatre); *Philoktetes* (Getty Villa Theater Lab); BODYTRAFFIC dance company (LA Philharmonic, The Broad Stage); *American Buffalo* (Deaf West). Teaching: design faculty, UCLA School of Theater, Film and Television.

**GEOFF KORF** (*Lighting Designer*). Broadway: *Two Trains Running*. Off-Broadway: *The Shaggs* (Playwrights Horizons); *Robin Hood* (New Victory); *The Night Watcher* (Primary Stages). Regional: *Magic Fruit*, *Urban Rez*, *California Tempest* (Cornerstone Theater); *Henry V*, *The Happiest Song Plays Last*, *Water by the Spoonful* (Oregon Shakespeare Festival); *different words for the same thing*, *Pyrenees* (Kirk Douglas Theatre); *The Madwoman in the Volvo*, *Sight Unseen* (South Coast Repertory); *Brownsville Song*, *Roz and Ray*, *A View from the Bridge*, *Venus in Fur*, *The Piano Lesson* (Seattle Repertory); *The Crucible*, *Mr. Burns* (ACT Theatre, Seattle);

*Bringing Down the House*, *Richard II* (Seattle Shakespeare); *Festen* (New Century Theatre); *District Merchants* (Folger Shakespeare). Museums: Main Exhibit, Dibner Hall of Science (Huntington Library). Teaching: University of Washington, Seattle. Education: CSU, Chico and Yale School of Drama.

**JOHN NOBORI** (*Sound Designer*) is a California-based sound designer and composer. His work has been heard in plays produced by such organizations as the Lewis Family Playhouse, The Getty Villa, and Oregon Shakespeare Festival. Other recent credits include Cornerstone Theater Company's production of *Magic Fruit* and South Coast Repertory's production of *Orange*. He has been nominated for several awards for excellence in sound design and is the recent recipient of an Ovation Award for his work on *The Golden Dragon* at The Theatre @ Boston Court. BA, University of California, Irvine.

**ROSALINDA MORALES AND PAULINE O'CON, CSA** (*Casting*) united their casting experiences from the theatre, independent film, network television, and studio casting worlds in 2008. Combining their professional relationships within the agency and management community and utilizing sources outside of the normal casting criteria, M-O Casting works collaboratively with filmmakers, producers, writers, and directors to create a cast that showcases the increasingly diverse population of audiences today.

**MAGGIE SWING** (*Production Stage Manager*). Center Theatre Group: *Spamilton*, *Big Night*, *King of the Yees*, *Block Party*, *Vicuña*, *Throw Me On the Bumpile* and *Light Me Up*. Geffen Playhouse: *Big Sky*, *Barcelona*, *Guards at the Taj*, *Discord*, *The Country House*, *The Judy Show*, *American Buffalo*. European tour: *The Apple Family Plays*. Off-Broadway: *Regular Singing*, *Sorry*, *Love's Labour's Lost*, *Sweet and Sad*, *Knickerbocker*, *Compulsion*, *That Hopey Changey Thing* (The Public Theater), *Slowgirl* (Lincoln Center Theater), *Blood Knot*, *The Orphans' Home Cycle* (Signature Theatre Company). Regional: *Bell*, *Book and Candle* (co-production with Long Wharf Theatre), *The Orphans' Home Cycle*, *Dividing the Estate*, *To Kill a Mockingbird*, *A Christmas Carol*, *A Midsummer Night's Dream*, *The Milk Train Doesn't Stop Here Anymore*, *The Bluest Eye*, and *Our Town* (Hartford Stage Company).

**AMANDA NOVOA** (*Stage Manager*). Center Theatre Group: *Popol Vuh: Heart of Heaven* (Grand Park). Los Angeles/Southern California: *Ghost Town*, *Fellowship*, *Urban Rez*, and *Magic Fruit* (Cornerstone Theater Company); *Lottery Loteria* (The Pasadena Playhouse); *The Long Road Today/El Largo Camino de Hoy* (South Coast Repertory); *The Legend of Sleepy Hollow*, *StinkyKids! The Musical*, and *Matrimonial Mayhem* (The Laguna Playhouse); Diversity Showcase (NBC Universal), *Hopscotch—Green Route* (The Industry). San Francisco/Northern California: *Live and On-Stage* (National Performance Network); *The Mathematics of Love*, *Ghost Limb*, *Mirrors*, *Smoke*, & *Getting Woke* (BRAVA! for Women in the Arts); *La Pastorela* (El Teatro Campesino). National tours: */peh-LO-tah/—a futbol framed freedom suite* (The Living Word Project).

## CENTER THEATRE GROUP

**MICHAEL RITCHIE** (*Artistic Director*) is in his 13<sup>th</sup> season as Center Theatre Group's Artistic Director, and has led over 190 productions to the Ahmanson Theatre, Mark Taper Forum, and Kirk Douglas Theatre stages, including the premieres of six musicals that moved to Broadway—*The Drowsy Chaperone*, *Curtains*, *13, 9 to 5: The Musical*, *Bloody Bloody Andrew Jackson*, and *Leap of Faith*—and the Pulitzer Prize in Drama finalist *Bengal Tiger at the Baghdad Zoo*.

**STEPHEN D. ROUNTREE** (*Managing Director*) joined Center Theatre Group in 2014 as Managing Director. He was previously the President and CEO of The Music Center (2002–2014) and concurrently the CEO of the Los Angeles Opera (2008–2012). He served the J. Paul Getty Trust for 22 years, starting in 1980 as Deputy Director of the Getty Museum, then Director of the Getty Center Building Program, and in 1998, the Executive Vice President and Chief Operating Officer for the Getty Trust. He currently serves as a trustee of Occidental College, The Ahmanson Foundation, Children's Hospital of Los Angeles, and Polytechnic School.

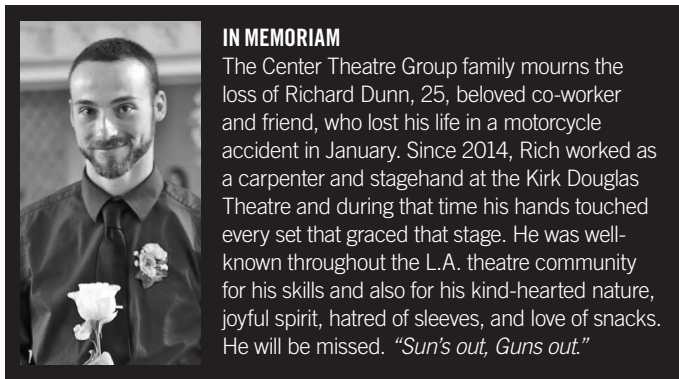
**DOUGLAS C. BAKER** (*Producing Director*) is now in his 28<sup>th</sup> season at Center Theatre Group. He is an active member of the Broadway League, the Independent Presenters Network, and is a proud member of the Association of Theatrical Press Agents and Managers. In May 2013, Doug received the Broadway League's prestigious Outstanding Achievement in Presenter Management Award.

**KELLEY KIRKPATRICK** (*Associate Artistic Director*). Since arriving at Center Theatre Group in 2005, Kelley has produced over 60 productions at the Ahmanson Theatre, Mark Taper Forum, and Kirk Douglas Theatre, many of which have gone on to future lives on Broadway, Off-Broadway, and beyond. In addition to producing shows across Center Theatre Group's three stages, he has had the

privilege of collaborating with numerous local and national artists to commission and develop new works.

**NAUSICA STERGIU** (*General Manager, Mark Taper Forum and Kirk Douglas Theatre*) has worked professionally supporting artists in theatres of all shapes, sizes, and locales including many seasons at Center Theatre Group as General Manager and, previously, as Audience Development Director. She oversees mainstage productions at the Taper and Douglas, as well as new play commissions and developmental productions through Center Theatre Group's New Play Development. Nausica has taught at USC's School of Dramatic Arts, and advises and works with local nonprofits including Hollywood Orchard.

**GORDON DAVIDSON** (*Founding Artistic Director*) led the Taper throughout its first 38 seasons, guiding over 300 productions to its stage and winning countless awards for himself and the theatre—including the Tony Award for theatrical excellence, Margo Jones Award, The Governor's Award for the Arts, and a Guggenheim fellowship. *The Kentucky Cycle* and *Angels in America (Part One)* won the Pulitzer in consecutive years and, in 1994, three of the four plays nominated for the Tony Award for Best Play were from the Taper (*Angels in America* won). In 1989, Gordon took over the Ahmanson and, in 2004, he produced the inaugural season in the Kirk Douglas Theatre.



### IN MEMORIAM

The Center Theatre Group family mourns the loss of Richard Dunn, 25, beloved co-worker and friend, who lost his life in a motorcycle accident in January. Since 2014, Rich worked as a carpenter and stagehand at the Kirk Douglas Theatre and during that time his hands touched every set that graced that stage. He was well-known throughout the L.A. theatre community for his skills and also for his kind-hearted nature, joyful spirit, hatred of sleeves, and love of snacks. He will be missed. "Sun's out, Guns out."

*Elliot, A Soldier's Fugue* is part of Quiara Alegría Hudes' Elliot Trilogy, which continues at the Mark Taper Forum with *Water by the Spoonful*.

WINNER OF THE PULITZER PRIZE

# WATER BY THE SPOONFUL

BY  
Quiara Alegría Hudes

DIRECTED BY  
Lileana Blain-Cruz

JAN 31 - MAR 11

PHOTO BY LUKE FONTANA

**ADDITIONAL STAFF FOR *ELLIOT, A SOLDIER'S FUGUE***

Assistant Directors ..... Dalia Ashurina, Bruce Lemon  
Assistant Set Designer..... Yuri Okahana  
Assistant Costume Designer..... Whitney Oppenheimer  
Assistant Lighting Designer ..... Meghan Hong  
Carpentry Crew ..... Bryce Gil, Curt Gavin, Randall Pound, Richard Dunn,  
Kate Harrow, Marcelo Olivas, Thomas Tulak, Todd McGraw, Zephyryn Avila  
Electrics Crew ..... Lunchbox, Daniel del Busto, Lucas Garrity, Maggie Durago,  
Chris Kramer, Alif Marchi, Brittany Cobb, Evan Drane, Ed Rehr  
Prop Lead..... Eric Babb  
Prop Artisans..... Mara Holland, Erin Walley  
Prop Carpenter..... Donovan Martinelli  
Scenic Charge ..... Orlando de la Paz  
Scenic Artist..... Carolina Meza  
First Hand ..... Pamela Walt  
Stitcher..... Bert Henert

**CREDITS**

Costumes, props, and sets provided by the Center Theatre Group Shop.  
Rehearsal and production photography by Craig Schwartz.

**FRONT-OF-HOUSE LEADS**

Trevor Algatt, AJ Meijer, Tarah Pollock

**FRONT-OF-HOUSE LEAD SWINGS**

Chase Anderson-Shaw, Bradford Barnes, Eduardo Fernandez-Baumann,  
Stephen Lydic, Adrienne Marquand

**CONCIERGES**

Brandon Cutts, Olivia Choate, Megan DeHart, Eric Eberle, Amber Espinosa-Jones,  
Angela Garcia, Tara Griffio, David Hunter Jr., Isaac Jay, Sarah Lindsley, Chelsey Maus,  
Rachel McVay, Janice Motuapuaka, Nicole Naito, Brenda Phillips, Daniel Rashid,  
Denise Reynoso, Leve Ross, Diana Spieller, Pia Shah, Michayla Van Treeck

**DISCUSSION LEADERS**

Chase Anderson-Shaw, Candice Clasby, Eduardo Fernandez-Baumann, Jay Lee,  
Stephen Lydic, Adrienne Marquand, Isabella Petrini, Jor-el Vaasborg

**CONCESSIONS**

Brandon Cutts, Megan DeHart, Abilene Gonzalez, Monica Greene, Mike Lanahan,  
Rachel McVay

**STAGE DOOR ATTENDANTS**

Ben Durham, Michael Hanson, Ian Ray, Cory Aycock

**ONLINE**

Center Theatre Group **#ElliotKDT**  
Like us on Facebook **Center Theatre Group**  
Follow us on Twitter **@CTGLA**  
Subscribe on YouTube **CTGLA**  
Follow us on Instagram **@CTGLA**



The Actors and Stage Managers employed in this production are members of Actors' Equity Association, the Union of Professional Actors and Stage Managers of the United States. This theatre operates under an agreement between the League of Resident Theatres and Actors' Equity Association, the Union of Professional Actors and Stage Managers in the United States.



The Director is a member of the Stage Directors and Choreographers Society, Inc., an independent national labor union.



Center Theatre Group is a member of the League of Resident Theatres (LORT), the American Arts Alliance, the Broadway League, Independent Producers' Network (IPN), LA Stage Alliance, National Alliance for Musical Theatre (NAMT) and the Theatre Communications Group (TCG).

*L-R: Cast members Jason Manuel Olazábal, Peter Mendoza, Caro Zeller, and Rubén Garfias and director Shishir Kurup at the first rehearsal for Elliot, A Soldier's Fugue. Photo by Craig Schwartz.*





**MICHAEL RITCHIE** Artistic Director | **STEPHEN D. ROUNTREE** Managing Director  
**DOUGLAS C. BAKER** Producing Director

Center Theatre Group would like to thank its exceptional staff for their ongoing commitment, dedication, and extraordinary efforts.

**ARTISTIC**

NEEL KELLER ..... Associate Artistic Director  
 KELLEY KIRKPATRICK ..... Associate Artistic Director  
 DIANE RODRIGUEZ ..... Associate Artistic Director  
 LINDSAY ALLBAUGH ..... Associate Producer  
 PATRICIA GARZA ..... Artistic Development Program Manager  
 JOY MEADS ..... Literary Manager/Artistic Engagement Strategist  
 ANDREW LYNFORD ..... Casting Associate  
 IAN JULIAN WILLIAMS ..... Program Coordinator, Block Party  
 MATTHEW BOURNE, DANAI GURIRA,  
 ANNA D. SHAPIRO ..... Associate Artists  
 DAVID ADIMI (FADIMAN), JON ROBIN BAITZ, SHEILA CALLAGHAN (FADIMAN),  
 STEVE CUIFFO, JUSTIN ELLINGTON, WILL ENO (FADIMAN), DANAI GURIRA,  
 JENNIFER HALEY, DAVID HENRY HWANG, NAOMI IIZUKA, LARS JAN, RAJIV  
 JOSEPH, LISA KRON, KIMBER LEE, YOUNG JEAN LEE, LAURAL MEADE,  
 RICHARD MONTOYA, LYNN NOTTAGE, QUI NGUYEN, DAN O'BRIEN, DENIS  
 O'HARE, LISA PETERSON, WILL POWER (FADIMAN), RAINPAN 43, MARCO  
 RAMIREZ, KEN ROHT, AL SMITH, ROGER GUEVNEUR SMITH, GOB SQUAD,  
 PAULA VOGEL, TRACEY SCOTT WILSON (FADIMAN) ..... Commissioned Artists  
 JEFF AUGUSTIN, MARCUS GARDLEY, ALESHA HARRIS,  
 LAURA JACOMIN, MOLLY SMITH METZLER,  
 MATTHEW PAUL OLMOS, JIEHAE PARK ..... L.A. Writers' Workshop Members  
 HANA S. KIM ..... Sherwood Award Recipient, 2018

**EDUCATION AND COMMUNITY PARTNERSHIPS**

LESLIE K. JOHNSON ..... Director of Social Strategy, Innovation and Impact  
 TYRONE DAVIS ..... Director of Education and Engagement  
 KATHRYN MACKENZIE ..... Department Operations Director  
 TRACI KWON ..... Arts Education Initiatives Director  
 CAMILLE SCHENKANKAN ..... Next Generation Initiatives Director  
 JESUS REYES ..... Community Partnerships Director  
 ADAM NICOLAI ..... Arts Education Program Manager  
 FELIPE M. SANCHEZ ..... Program Manager, Emerging Artists  
 and Arts Professionals  
 JENNIFER HARRELL ..... Operations Assistant  
 DEBRA PIVER ..... Resident Teaching Artist

**MANAGEMENT AND ADMINISTRATION**

NAUSICIA STERGIOU ..... General Manager  
 (Mark Taper Forum, Kirk Douglas Theatre)  
 JEFFREY UPAH ..... General Manager (Ahmanson Theatre)  
 KATIE SOFF ..... Asst General Manager  
 (Mark Taper Forum, Kirk Douglas Theatre, NPD)  
 CASEY MCDERMOTT ..... General Management Associate  
 MEGAN ALVORD ..... Company Manager  
 (Mark Taper Forum, Kirk Douglas Theatre)  
 ERIC SIMS ..... Director of Theatre Operations (Kirk Douglas Theatre)  
 MAX OKEN ..... Facility Manager (Kirk Douglas Theatre)  
 JAQUELYN JOHNSON ..... House Manager (Kirk Douglas Theatre)  
 SONDRRA MAYER ..... Concessions Manager (Kirk Douglas Theatre)  
 ALANA BEIDELMAN ..... Executive Assistant to the Artistic Director  
 EVELYN STAFFORD ..... Executive Assistant to the Managing Director

**PRODUCTION**

DAWN HOLISKI ..... Production Department Operations Director  
 JOE HAMLIN ..... Technical Director/Production Manager  
 (Ahmanson Theatre)  
 SHAWN ANDERSON ..... Master Carpenter (Ahmanson Theatre)  
 STAN STEELMON ..... Master Propertyman (Ahmanson Theatre)  
 JAMES WRIGHT ..... Master Electrician (Ahmanson Theatre)  
 ROBERT SMITH ..... Master Soundman (Ahmanson Theatre)  
 SHANE ANDERSON ..... Flyman (Ahmanson Theatre)  
 MICHAEL GARDNER ..... Wardrobe Supervisor (Ahmanson Theatre)  
 PATRICE K. MADRIGAL ..... Hair and Make-up Supervisor  
 (Ahmanson Theatre)  
 CHRISTINE L. COX ..... House Manager (Ahmanson Theatre)  
 JONATHAN BARLOW LEE ..... Production Manager (Mark Taper Forum)  
 EMMET KAISER ..... Master Carpenter (Mark Taper Forum)  
 ROBERT RUBY ..... Master Propertyman (Mark Taper Forum)  
 BONES MALONE ..... Master Soundman (Mark Taper Forum)  
 JEFF PORTER ..... Master Electrician (Mark Taper Forum)  
 DENNIS SEETOO ..... Wardrobe Supervisor (Mark Taper Forum)  
 RICK GEYER ..... Hair & Make-up Supervisor (Mark Taper Forum)  
 LINDA WALKER ..... House Manager (Mark Taper Forum)

CHRISTOPHER REARDON ..... Production Manager  
 (Kirk Douglas Theatre)  
 KATIE POLEBAUM ..... Stage Supervisor (Kirk Douglas Theatre)  
 AARON STAUBACH ..... Master Electrician (Kirk Douglas Theatre)  
 ADAM PHALEN ..... Head Audio (Kirk Douglas Theatre)  
 SEAN MEYER ..... Light Board Programmer and Operator  
 (Kirk Douglas Theatre)  
 CAMBRIA CHICHI ..... Wardrobe Supervisor (Kirk Douglas Theatre)  
 CHAD SMITH ..... Associate Technical Director  
 KRISTIN MATSUMOTO ..... Assistant Technical Director  
 LEE O'REILLY ..... Assistant Technical Director  
 SEAN KLOC ..... Shop Foreman  
 ANDREW THIELS ..... Prop Director  
 MERRIANNE NEDREBERG ..... Associate Prop Manager  
 JON WARD ..... Associate Prop Manager  
 CANDICE CAIN ..... Costume Director  
 BRENT M. BRUIN ..... Costume Shop Manager  
 MADDIE KELLER ..... Costume Generalist  
 WHITNEY OPPENHEIMER ..... Shop Assistant  
 SWANTIE TUOHINO ..... Tailor  
 ELIZABETH LEONARD ..... Facilities Manager  
 JULIO A. CUELLAR ..... Driver/Custodian  
 JOE HALLAM, RYAN HOWARD ..... Drivers  
 PETER WYLIE ..... Production Coordinator

**FINANCE, INFORMATION SYSTEMS AND HUMAN RESOURCES**

CHERYL SHEPHERD ..... Chief Financial Officer  
 SARAH STURDIVANT ..... Director of Finance and Technology  
 SUZANNE BROWN ..... Controller  
 DANNY LAMPSON OPSTAD ..... Accounting Manager  
 NAKISA ASCHTIANI ..... Senior Staff Accountant  
 ALEGRIA SENA ..... Staff Accountant  
 XOCHITL RAMIREZ ..... Accounts Payable Supervisor  
 KERRY LARICK ..... Accounting Assistant  
 JESSICA HERNANDEZ ..... Payroll Manager  
 JUAN MARTINEZ ..... Payroll Specialist  
 STAN GRUSHESKY ..... Director of Information Systems  
 MANDY RATLIFF ..... Sr. Database & Web Administrator  
 ASH LEWIS ..... Help Desk Administrator  
 JODY HORWITZ ..... Director of Human Resources  
 P.J. PHILLIPS ..... Senior Human Resources Generalist  
 MOSS ADAMS ..... Auditor  
 MICHAEL C. DONALDSON, LISA A. CALLIF ..... Legal Counsel  
 GIBSON, DUNN & CRUTCHER ..... Legal Counsel

**INSTITUTIONAL ADVANCEMENT**

YVONNE CARLSON BELL ..... Director of Institutional Advancement  
 PATRICK OWEN ..... Deputy Director, Advancement Operations  
 LIZ LIN ..... Director of Development,  
 Artist and Entertainment Relations  
 CHARITY WU ..... Director of Major Gifts Stewardship  
 BECKY BIRDSONG ..... Major Gifts and Planned Giving Officer  
 KATY HILTON ..... Associate Director of Foundation and Government Support  
 LAURA HITE ..... Manager of Major Gifts  
 DANIELLE LESNER ..... Associate Director of Donor Engagement  
 MANDI OR ..... Associate Director of Special Events  
 ROBBIE MARTIN ..... Associate Director of Corporate Relations  
 JENNIFER CHAN ..... Special Events Coordinator  
 DONALD JOLLY ..... Donor Experience Coordinator  
 JAZMINE JONES ..... Donor Relations Coordinator  
 KIM OKAMURA ..... Grants Manager  
 EMILY GIBSON ..... Institutional Advancement Research Associate  
 ERIN SCHLABACH ..... Manager of Major Gifts Stewardship  
 ERIC SEPPALA ..... Board Liaison and Executive Assistant to  
 the Director of Institutional Advancement  
 MATTHEW SUTPHIN ..... Institutional Advancement Associate  
 KRISTIN YAMAKA ..... Corporate Relations Coordinator  
 EDUARDO MOLLINEDO-PINÓN ..... Donor Membership Coordinator  
 MIKE RATTERMAN ..... Donor Advisor Supervisor  
 AL BERMAN, KATE CAMPBELL, ELIZABETH DELLORUSSO, DAVID GARVER,  
 JESSICA KATZ, BENJAMIN SCHWARTZ, NICOLE SCIPIONE, PAUL VITAGLIANO,  
 BILL WALTON ..... Donor Advisors  
 KARLA GALVEZ, JUSTINE PEREZ ..... Donor Services Associates  
 WAUKENA CUYJET, MURRAY E. HELTZER,  
 CECILIA MONTES ..... Development Volunteers

**MARKETING**

DEBORAH WARREN ..... Director of Marketing  
 KYLE HALL ..... Advertising & Promotions Director  
 GARRETT COLLINS ..... Senior Marketing Manager, Strategy & CRM  
 ARIE LEVINE ..... Senior Marketing Manager, Ahmanson & Mark Taper Forum  
 KIYOMI EMI ..... Marketing Manager, Promotions & Events  
 EMYLI GUDMUNDSON ..... Marketing Manager, Kirk Douglas Theatre  
 LAUREN VAN VLEET ..... Sales & Marketing Coordinator

DEANNA MCCLURE ..... Art Director  
 IRENE T. KANESHIRO ..... Senior Design Manager  
 SANDI SILBERT ..... Senior Designer  
 TARA NITZ ..... Graphic Designer  
 JAVIER VASQUEZ ..... Graphic Designer

**COMMUNICATIONS**

JAMES SIMS ..... Director of Communications  
 JASON MARTIN ..... Head of Publicity  
 KRISTI AVILA ..... Publicist  
 KAREN BACELLAR ..... Junior Publicist  
 SARAH ROTHBARD ..... Senior Manager, Communications and Editorial  
 ARIELLE LAUB ..... Communications Coordinator  
 SARAH GOLDBAUM ..... Digital Product Manager  
 HAL BANFIELD ..... Multimedia Producer

**TICKET SALES AND SERVICES**

SHAWN ROBERTSON ..... Ticket Sales Director  
 SKYPP CABANAS ..... Ticket Operations Manager  
 NICOLE MEDINA ..... Ticket Operations Coordinator  
 MICHAEL ZOLDESSY ..... Account Sales Manager  
 SANDY CZUBIAK ..... Audience and Subscriber  
 Services Director  
 JENNIFER BAKER, CHERYL HAWKER,  
 RICHARD RAGSDALE ..... Audience Services Supervisors  
 ALICE CHEN ..... Audience Services Asst. Supervisor  
 GARY HOLLAND, DEBORAH REED ..... Audience Services  
 Sales Associates

SAM AARON, JEREMIE ARENCIBIA, KIMBERLY ARENCIBIA, VICKI BERNDT,  
 CARLOS D. CHAVEZ, JR., KAITLYN GALVEZ, MICHAEL ESPINOZA,  
 ANASTASHIA GARCIA, EILEEN PEREZ, LEX SAVKO,  
 TEVIN WILLIAMS ..... Audience Services Representatives  
 DANUTA SIEMAK ..... Subscriber Services Supervisor  
 CHRISTINA GUTIERREZ ..... Subscriber Services Asst. Supervisor  
 IRENE CHUANG, LIGIA PISTE, PETER STALOCH ..... Subscriber Services  
 Senior Representatives  
 SARAH K. GONTA ..... Box Office Treasurer  
 ANGELICA CARBAJAL, KISHISA ROSS ..... Assistant Treasurers  
 MICHAEL KEMPISTY, KEVIN LAUVER, MICHAEL SALTZMAN,  
 CRIS SPACCA ..... Box Office Staff

KERRY KORF ..... Priority Services Director  
 SUSAN F. TULLER ..... Priority Services Operations Manager  
 CANDICE WALTERS ..... Priority Services Sales Manager  
 PAUL CUEN ..... Priority Services Manager  
 KRISTEN SCHRASS ..... Priority Services Assistant Supervisor  
 Representatives

BEAELNE AHERN, CLAY BUNKER, MAGGIE DODD,  
 NATALIE DRESSEL, SOFIJA DUTCHER, MARC "BYRON" DROTMAN,  
 FRANK ENSENBERGER, LOU GEORGE, BRAD GRIFFITH, SHEP KOSTER,  
 JORDAN KRISNAK, IAN PRICE, MICHAEL SMITH,  
 DIANE WARD ..... Representatives