



© Registered Trademark of Dav Pilkey

TheaterWorksUSA's production of

DOG MAN: THE MUSICAL

Adapted from the *Dog Man* series of books by Dav Pilkey

Book and Lyrics by Kevin Del Aguila

Music by Brad Alexander

Directed and Choreographed by Jen Wineman

NOVEMBER 21, 2023 – JANUARY 7, 2024

friend.
insider.
visionary.

you!

**YOUR MEMBERSHIP EXPERIENCE
AT CENTER THEATRE GROUP**

As a nonprofit organization, Center Theatre Group relies on the support of generous theatre-lovers like you. Become a member with a tax-deductible contribution of \$100—or just \$10 per month—and make a vital difference for our future following the most challenging period in Center Theatre Group's history. Your gift will enable us to continue to produce and present the highest caliber theatre, nurture new artists, and provide transformative arts education programs.

Plus, your gift will unlock membership benefits to enhance your theatregoing experience, from priority ticket access to members-only events and more!

Learn more at CTGLA.org/membership



**SCAN HERE TO SUPPORT
CENTER THEATRE GROUP NOW**

QUESTIONS?

Call our Membership Concierge
at 213.972.7564 or email membership@CTGLA.org

friends

Friends get first access to tickets before the general public plus invitations to members-only events, including tours and rehearsals. *Join today with a gift of \$100 or more—or just \$10 per month.*

insiders

Insiders enjoy a year-round VIP experience with access to the best seats for our shows, concierge service for house seats at New York and London productions, and special behind-the-scenes events. *Join today with a gift of \$2,500 or more.*

visionaries

Visionaries have the ultimate access to our artists, shows, programs, and staff, with premium seating for our productions, including use of The Founders' Room at the Ahmanson, and invitations to private salon-style artist events. *Join today with a gift of \$15,000 or more.*

**CENTER
THEATRE
GROUP**



SNEHAL DESAI Artistic Director | **MEGHAN PRESSMAN** Managing Director/CEO | **DOUGLAS C. BAKER** Producing Director
GORDON DAVIDSON Founding Artistic Director

Center Theatre Group presents
TheaterWorksUSA's production of
Dog Man: The Musical



Barbara Pasternack
Artistic Director

Michael Harrington
Executive Director



Book & Lyrics by
Kevin Del Aguila

Music by
Brad Alexander

Adapted from the DOG MAN series of books by

Dav Pilkey

Featuring

JOE BALANZA, JASIANA CARABALLO, L.R. DAVIDSON, REGGIE DE LEON,
CHADAÉ NICHOL, BRIAN OWEN, MARCUS PHILLIPS, BRYAN DANIEL PORTER,
MAX TORREZ

Scenic Design
Timothy R. Mackabee

Costume Design
Heidi Leigh Hanson

Lighting Design
David Lander

Sound Design
Emma Wilk

Music Direction
Gregory Nabours

Orchestrations
Lloyd Kikoler

Casting
Michael Donovan Casting
Michael Donovan, CSA
Richie Ferris, CSA

Production Stage Manager
Jihee Jenny Park

Director & Choreographer
Jen Wineman

Adapted from the books DOG MAN, DOG MAN UNLEASHED, DOG MAN: A TALE OF TWO KITTIES, and DOG MAN LORD OF THE FLEAS by Dav Pilkey. Copyright (c) 2015, 2016, 2017, and 2018 by Dav Pilkey.
Published by Graphix, an imprint of Scholastic, Inc.

NOVEMBER 21, 2023 – JANUARY 7, 2024 **KIRK DOUGLAS THEATRE**

CAST

(in order of appearance)

George..... MARCUS PHILLIPS
Harold MAX TORREZ
Petey.....BRYAN DANIEL PORTER
Dog ManBRIAN OWEN
Flippy..... CHADAÉ NICHOL
Li'l Petey L.R. DAVIDSON

SWINGS

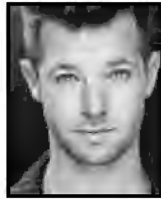
For George/Harold—JOE BALANZA
For Flippy/Li'l Petey—JASIANA CARABALLO
For Petey/Dog Man—REGGIE DE LEON



MARCUS
PHILLIPS



MAX
TORREZ



BRYAN DANIEL
PORTER



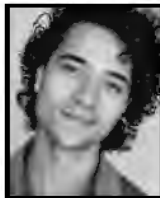
BRIAN
OWEN



CHADAÉ
NICHOL



L.R.
DAVIDSON



JOE
BALANZA



JASIANA
CARABALLO



REGGIE
DE LEON

MUSICAL NUMBERS

ACT I

“The Opening Number”	Company
“Dog Man”	Company
“Revenge”	Petey
“Cyber-Fish”	Company
“HappySong/80-HD”	Li’l Petey, Petey
“The Perfect Mashup”	Company
“Without Me”	Petey
“Revenge (Flippy)”	Flippy, Company

ACT II

“I’m Back”	Flippy
“The Evil ABCs”	Petey, Li’l Petey
“Robo-Dance Party”	Li’l Petey
“Dog Man Is Go!”	Company
“A Far, Far Better Thing”	Petey
“A Far, Far Better Reprise”	Flippy
“Dog Man (Reprise)”	Company
“The Happy Ending”	Company

THERE WILL BE ONE 10-MINUTE INTERMISSION

PLACE

A treehouse.

TIME

Whatever time it is right this very second.

Please turn off all electronic devices such as cellular phones and watch alarms. The use of any recording device, either audio or video, and the taking of photographs, with or without flash, is strictly prohibited.

WHO'S WHO

JOE BALANZA (*George/Harold Swing, he/him*). *Nice Work If You Can Get It*, *42nd Street*, *Music Man*, *Oklahoma*, *Rag Time*, *Shenandoah*, and much more. [Imdb.me/joebalanza](https://www.imdb.me/joebalanza)

JASIANA CARABALLO (*Flippy/Li'l Petey Swing, she/her*). Chicago-native, Jasiana Caraballo, is so excited to swing her way into the Dog Man fam! Her artistic journey has included: *Cindy & the Disco Ball* (Garry Marshall Theatre); *Joseph... Dreamcoat* (La Mirada); and *Red, Burlesque, Tonight, Tonight*, (Rockwell) She wants to thank KMR, Scot, & all of her loved ones for their endless support.

L.R. DAVIDSON (*Li'l Petey & Others, she/her*). OFF-BROADWAY: *DOG MAN: The Musical* (New World / Lortel Theatre), *An Unbalanced Mind* (AMT Theater), *Cat Kid Comic Club* (Lortel Theatre), *Death For 5 Voices* (Prospect Theater Co), *National Pastime* (Playwrights Horizons) SELECT REGIONAL: *FOLLIES* (Chicago Shakespeare), *Ordinary Yearning...* (Steppenwolf), *25th...Spelling Bee* (Northern Stage), *PaperMoon* (Goodspeed/Walnut Street). Graduate of Juilliard & MSM. She's Li'l Petey on the OCR of DOGMAN. [theird.com](https://www.theird.com) @theLRdavidson

REGGIE DE LEON (*Petey/Dog Man Swing, he/him*). L.A. native thrilled to be making his debut at the Kirk Douglas Theatre! Theatre: Iago in *Aladdin* (Broadway and 1st national tour), Pain in *Hercules* at the Paper Mill Playhouse. TV/Film: Paul in *MOM* and Shep in Air Bud's *Pup Star* films. Love to Mom, Katie, and Max! [reggiedeleon.com](https://www.reggiedeleon.com)

CHADAÉ NICHOL (*Flippy & Others, she/they*) is an L.A. based Performing and Teaching Artist. She is a Ball State Theatre and Dance Alumni. Nichol also serves as Artistic Director for Academy of the Arts in the suburbs of Chicago. Credits: Bway/1st National: *Motown*, *Showboat*. Regional: *Ragtime*, *Beautiful*, and *The Wiz*.

BRIAN OWEN (*Dog Man & Others, he/him*) is supa grateful to work with material that inspires children to read when the most radical thing they can do is pick up a book. Selected credits: *Dog Man: The Musical* and *Cat Kid Comic Club: The Musical*, *Sesame Street*, *Sweeney Todd*, and *The 39 Steps*. His favorite roles are husband to Nicole and bellyscratcher of Ms. Starbara Stanwyck. Proud member, Team BWA. IG: @difficultlemondesigns

MARCUS PHILLIPS (*George & Others, he/they*). Absolutely loved these books growing up and thrilled to bring them to life! Recent credits include *Spring Awakening* (East West Players), *The Prom* (1st National Tour), *Once on This Island* (El Portal), and *Tonight Tonight* (Rockwell). Thank you to all the people who continue to pour into their life. @who.is.marcus

BRYAN DANIEL PORTER (*Petey & Others, he/him*). Bryan most recently starred in Hulu's *Merry Kiss Cam*, *Brassroots District* at La Jolla Playhouse, and *The Hookup* with Blumhouse. Select Credits: *Dear White People*, *Paw Patrol*, *Blaze and the Monster Machines*, many voices in videogames for Nintendo/Xbox/PlayStation/iOS, and theatrical productions with Geffen Playhouse, Mark Taper Forum, Guthrie Theater, and his one-man show for Broadway on Demand. [BryanDanielPorter.com](https://www.BryanDanielPorter.com). IG: @BryanDanielPorter.

MAX TORREZ (*Harold & Others, he/him*). Max is a proud Texan who resides in NYC. He's thrilled to join Dog Man on his adventures! Regional: *Assassins*, *Mamma Mia!* (East West Players); *Grease* (McCoy Rigby; Musical Theatre West). TV: *The Chosen*. Mil gracias to Fam Bam, Grace and the big guy upstairs. For Decky and EJ! Galatians 6:9.

KEVIN DEL AGUILA (*Book & Lyrics, he/him*) is a multi-Emmy-winning writer and Tony-nominated performer whose other musical adaptations include *Cat Kid Comic Club*, *Diary Of A Wimpy Kid*, and DreamWorks' *Madagascar*. He's the book-writer of the Off-Broadway hit *Altar Boyz* (Outer Critics Award), and lyricist of *Click Clack Moo* (Lortel and Drama Desk Award noms), and songs featured in the Disney movie *Strange World*.

BRAD ALEXANDER (*Music, he/him*). Theatre: *See Rock City & Other Destinations* (Drama Desk winner), *Cat Kid Comic Club: The Musical*, *Click Clack Moo* (Drama Desk, Lortel noms), *We The People: America Rocks!* (Lortel nom). TV: *Clifford The Big Red Dog*, *Peg + Cat*, VH1. Member: BMI, DGA, NAMT, SAG-AFTRA. [bradalexander.com](https://www.bradalexander.com)

DAV PILKEY (*Author*). When Dav Pilkey was a kid, he was diagnosed with ADHD and dyslexia. He was so disruptive in class that his teachers made him sit out in the hallway everyday. He spent his time in the hallway creating his own original comic books—the very first adventures of *Dog Man* and *Captain Underpants*. His *Dog Man* series, launched in 2016, has more than 60 million copies in print and translated in 45 languages. A movie adaptation of *Dog Man* is in the works from DreamWorks Animation. The publication of *Dog Man: The Scarlet Shedder* in March 2024 will mark 37 years of Dav writing and illustrating acclaimed and bestselling books for children. Dav's stories are semi-autobiographical and explore universal themes that celebrate friendship, empathy, and the triumph of the good-hearted.

JEN WINEMAN (*Director/Choreographer, she/her*). Selected NYC: *Dog Man: The Musical* (New World Stages/Lucille Lortel Theatre); *Retraction* (TheatreRow); *Less Than 50%* (59E59); *My Heart is in the East* (La Mama); *Fable* (NYMF); *F#%king Up Everything* (Elektra Theater). Regional: American Shakespeare Center, Merrimack Rep, Pittsburgh CLO, Tantrum

Theater, Dorset Theatre Festival, Asolo Rep, Miami New Drama, Triad Stage. MFA Yale School of Drama. jenwineman.com @winemanjen

TIMOTHY R. MACKABEE (*Scenic Designer*). Set Design: Tim Mackabee. Broadway: *The Elephant Man* (starring Bradley Cooper), *Mike Tyson: Undisputed Truth* (dir. Spike Lee). West End: *The Elephant Man*. Off-Broadway: *Heathers*, *The Last Match* (Roundabout), *Vietgone* (MTC), *Guards at the Taj* (Lortel Award), *Describe The Night, Our New Girl* (Atlantic), *Luce* (LCT), *Gigantic* (Vineyard). TV: *Amy Schumer: Live at the Apollo* (HBO), *Gotham*, *Smash*, *The Today Show*. Education: North Carolina School of the Arts, Yale School of Drama. @timmackabeeedesign. Timothymackabeeedesign.com

HEIDI LEIGH HANSON (*Costume Designer, she/her*). Besides catching up on the current *Dog Man* Books, Heidi designs costumes for a variety of projects and teaches Costume Design and Technology at Southern Connecticut State University and Housatonic Community College. Heidi holds an MFA in costume and set design from the Yale School of Drama, and a BA in theatre from California State University Long Beach. For more information visit: heidileigh.com

DAVID LANDER (*Lighting Design*) is very excited to illuminate Dav Pilkey's *Dog Man* and present it to audiences all over the USA and Australia. Other shows David has illuminated for TheaterWorksUSA are Dav Pilkey's *Cat Kid Comic Club*, *The Lightning Thief—The Percy Jackson Musical*, *The Pout Pout Fish*, *Pete The Cat*, and *The Civil War*.

EMMA WILK (*Sound Design*) is a New York-based sound designer and collaborator. Her designs have been heard at New York theaters including The Public, DR2, Theater Row, The Lortel, The New Vic, New World Stages, La MaMa, 59E59, Rattlestick, and HERE. Broadway Associate/Assistant Designer credits include *Take Me Out*; *How I Learned to Drive*; *Caroline, or Change*; *Burn This*; *Long Day's Journey Into Night*; *Heisenberg*; and *The Lyons*. Member USA 829. Emmamwilk.com.

GREGORY NABOURS (*Music Direction, he/him*) is an Ovation, Los Angeles Drama Critics Circle, and NAACP Award recipient, as well as the co-creator of the Unauthorized Musical Parody series, which has produced over 15 original jukebox musicals. His original musical, *Mozart: Her Story* recently debuted to 2 sold out houses at Carnegie Hall.

LLOYD KIKOLER (*Orchestrations, he/him*) is a New York City based orchestrator, producer and multi-instrumentalist. His work in theatre includes, *Macbeth In Stride* (Shakespeare Theatre Company), *Earth Rise* (Kennedy Center), *Dot Dot Dot: A New Musical* (TheaterWorksUSA), *Eighty-Sixed* (Diversionary Theatre).

MICHAEL DONOVAN CASTING Michael and Richie have 12 CSA Artios Awards (presented for Outstanding Achievement in Casting) between them. They have cast over 1,000 shows at such places as the Ahmanson, Mark Taper, Hollywood Bowl, Kirk Douglas, Walt Disney Concert Hall, Pasadena Playhouse, Laguna Playhouse, ICT, 5 Star and much more.

JIHEE JENNY PARK (*Production Stage Manager, she/her*). Jihee Jenny Park is a Korean American Stage Manager based in Los Angeles and very excited to go on adventures with *Dog Man: The Musical!* Select stage management credits: Independent Shakespeare Company's Griffith Park Free Shakespeare Festival; *Twilight: Los Angeles, 1992* (CTG); *How It's Gon' Be* (Echo); *Anita Berber is Dead!* and *Letters from Home* (ISC); *King Lear* (Wallis); *Revenge Porn and The Giant Void in My Soul* (Ammo).

GUADALUPE N GARCIA (*Assistant Stage Manager*) is ecstatic to return to the Kirk Douglas Theatre after being a part of the SM team for *Fetch Clay, Make Man*. She would love to thank her family and close friends for all the constant support they give her to pursue her dreams. IG @guadalupengarcia

NEUROTOUR PHYSICAL THERAPY, INC. Carolyn Lawson PT, founder and CEO of NEURO TOUR & Neurosport (Physical Therapy), Global leaders in live entertainment and performing arts medicine. We are honored to be part of this amazing touring company of *Dog Man: The Musical*. NEURO TOUR, Keeping performers happy, healthy & on stage.

THEATERWORKSUSA (**BARBARA PASTERNAK**, *Artistic Director*; **MICHAEL HARRINGTON**, *Executive Director*) has led the Theatre for Young and Family Audiences movement in New York City and across North America for over half a century. At TWUSA, we believe that access to art—and theatre, in particular—is vital for our youth. Since 1961, the 501(c)3 not-for-profit has captured the imaginations of 100 million new and veteran theatregoers with an award-winning repertoire of over 140 original plays and musicals. Acclaimed alumni include Kristen Anderson-Lopez and Robert Lopez (*Disney's Frozen*), Daphne Rubin-Vega (*Rent*), Jerry Zaks (*The Music Man*), Benj Pasek and Justin Paul (*Dear Evan Hansen*), Miguel Cervantes (*Hamilton*), Kathleen Chalfant (*Angels in America*), and Chuck Cooper (Tony award-winning actor, *The Life*). TWUSA.ORG

ACTORS' EQUITY ASSOCIATION, founded in 1913, represents more than 45,000 actors and stage managers in the U.S. Equity negotiates wages and working conditions, providing a wide range of benefits, including health and pension plans. Equity seeks to foster the art of live theatre as an essential component of our society. actorsequity.org.

THE STAGE DIRECTORS AND CHOREOGRAPHERS SOCIETY (SDC), founded in 1959, is the theatrical labor union that unites, empowers, and protects professional stage Directors and Choreographers throughout the United States. SDC's mission is to foster a national community of professional stage Directors and Choreographers by protecting the rights, health, and livelihoods of all its Members. SDC seeks to facilitate the exchange of ideas, information, and opportunities while educating current and future generations about the role of Directors and Choreographers and providing effective administration, negotiations, and contractual support for over 2,000 Full Members and over 1,000 Associate Members.

CENTER THEATRE GROUP

SNEHAL DESAI (*Artistic Director, he/him*) was appointed Center Theatre Group's third artistic director in 2023. As an artistic leader, Snehal has sought to raise awareness on social issues that affect Angelenos through impactful and empowering storytelling. Previously, he was the Producing Artistic Director of East West Players. A Soros Fellow and the recipient of a Tanne Award, Snehal was the Inaugural Recipient of the Drama League's Classical Directing Fellowship. He has served on the boards of the Consortium of Asian American Theaters and Artists (Caata), Theatre Communications Group (TCG), and currently serves on the board of the National Alliance for Musical Theatre (NAMT). Snehal was on the faculty of USC's graduate program in Arts Leadership and is a graduate of the Yale School of Drama.

MEGHAN PRESSMAN (*Managing Director/CEO, she/her*) joined Center Theatre Group in 2019. Previously, she served as Managing Director of Woolly Mammoth Theatre Company (D.C.), Director of Development for Signature Theatre (N.Y.), and Associate Managing Director of Berkeley Rep. She is a graduate of Yale School of Drama/Yale School of Management and serves as a mentor in the Theater Management program. Meghan has served as the Vice-Chair for the Theatre Communications Group Board of Directors and is a member of the Broadway League.

GORDON DAVIDSON (*Founding Artistic Director*) led the Taper throughout its first 38 seasons, guiding over 300 productions to its stage and winning countless awards for himself and the theatre—including the Tony Award for theatrical excellence, Margo Jones Award, The Governor's Award for the Arts, and a Guggenheim fellowship. *The Kentucky Cycle* and *Angels in America (Part One)* won the Pulitzer in consecutive years and, in 1994, three of the four

plays nominated for the Tony Award for Best Play were from the Taper (*Angels in America* won). In 1989, Gordon took over the Ahmanson and, in 2004, he produced the inaugural season in the Kirk Douglas Theatre.

NAUSICA STERGIU (*General Manager*) has worked supporting artists in theatres of all shapes, sizes, and locales including Center Theatre Group as General Manager and, previously, as Audience Development Director. She oversees productions at the Taper and Douglas, as well as new play commissions and developmental productions. Nausica has taught Marketing and Management at USC's School of Dramatic Arts and works with local nonprofits including Hollywood Orchard. BA, Cornell University. MFA, Yale School of Drama.

DOUGLAS C. BAKER (*Producing Director, he/him*) joined Center Theatre Group in 1990. Doug is an active member of the Broadway League, the Independent Presenters Network (IPN), and is a proud member of the Association of Theatrical Press Agents and Managers (ATPAM). In 2013, Doug received the Broadway League's prestigious Outstanding Achievement in Presenter Management Award.

CENTER THEATRE GROUP, one of the nation's preeminent arts and cultural organizations, is Los Angeles' leading not-for-profit theatre company, which, under the leadership of Artistic Director Snehal Desai, Managing Director / CEO Meghan Pressman, and Producing Director Douglas C. Baker, programs seasons at the 736-seat Mark Taper Forum and 1,600 to 2,100-seat Ahmanson Theatre at The Music Center in Downtown Los Angeles, and the 317-seat Kirk Douglas Theatre in Culver City. In addition to presenting and producing the broadest range of theatrical entertainment in the country, Center Theatre Group is one of the country's leading producers of ambitious new works through commissions and world premiere productions and a leader in interactive community engagement and education programs that reach across generations, demographics, and circumstances to serve Los Angeles. Founded in 1967, Center Theatre Group was led by Founding Artistic Director Gordon Davidson until 2005 when Michael Ritchie became artistic director until his retirement in 2021; Snehal Desai was appointed the organization's next artistic director in 2023. Center Theatre Group has produced more than 700 productions across its three stages, including such iconic shows as *Zoot Suit*; *Angels in America*; *The Kentucky Cycle*; *Biloxi Blues*; *Twilight: Los Angeles, 1992*; *Children of a Lesser God*; *Curtains*; *The Drowsy Chaperone*; *9 to 5: The Musical*; and *Bengal Tiger at the Baghdad Zoo*. CenterTheatreGroup.org

DOG MAN: THE MUSICAL TOUR STAFF**PRODUCERS**

TheaterWorksUSA

Artistic Director..... Barbara Pasternack
Executive Director..... Michael Harrington
Associate Producer, Los Angeles & Orlando..... Lisa Morabito Petersen
Associate Artistic Director..... Jillian Carucci

GENERAL MANAGEMENT & PRODUCTION MANAGEMENT

TheaterWorksUSA

General Manager..... Tegan Meyer
Production Manager..... Brendan J. O'Brien
Company Manager..... Michael Anthony Gremo

Associate Lighting Designer..... Chris D'Angelo
National Press & Marketing..... Allied Touring
Digital & Social Media..... Andy Drachenberg
Costume Coordinator..... Shon LeBlanc, Costume Designer 892
and Valentino's Costume Group, LLC
Physical Therapy..... NEUROTOUR Physical Therapy Inc.
Merchandise..... Araca
Banking..... JP Morgan Chase Bank, N.A.
Payroll..... Paycom
Insurance..... Arts Insurance Program
Legal..... Kauff McGuire & Margolis LLP

ADDITIONAL STAFF FOR THEATERWORKSUSA

Education and Community Engagement Coordinator..... Yanece Cotto
Education and Community Engagement Coordinator—LA..... Noemi Villela-Dean
Human Resources Manager..... Ashley Watson
Business Associate..... Sylvia Jimenez
Finance and Accounting Supervisor..... Eliza Johnson
Company Manager..... Avery Varvar
Technical Supervisor..... Bob Daley
Costume Shop Supervisor..... Molly Huey
Director of Systems and Administration..... Steve Lattanzi
Senior Director of Sales..... Beth Prather
Director of Sales and Special Engagements..... Josh Sherman
Assistant Sales Manager, Administration and Education..... Mary St. Angelo
Marketing & Communications Manager..... Kristen Gensinger
Ticketing Administrator..... Harris Ellahi
Director of Development..... Louise Diamond

CREDITS

Scenic and Prop construction by Hillbolic Arts and Carpentry, Lake Simons, Lidderdale Enterprises, Thomas Spence; 80HD Puppets built by AchesonWalsh Studios; Lighting equipment rental by Christie Lites; Sound equipment rental by South Bay Sound And Light Inc.; Housing arrangements through Tourwerks; Trucking provided by McCollisters and Rock it Global; Resident Wellness Supervisor Heidi Landis.

SPECIAL THANKS

Sayuri and Dav Pilkey; Charisse Meloto, Rachel Coun and everyone at Scholastic; Amy Berkower, Cecilia de la Campa and everyone at Writer's House; Village Well Books and Coffee.

CTG ADDITIONAL STAFF

Wardrobe Supervisor..... Taylor Decker
Follow-Spot Operator..... Matthew Perelman, Benjamin Wendel
A2..... Eden Gordon, David Rios
Carpenters..... Brian Benson, Trey Blevins, Rochelle Concepcion,
Hannah Higbee, James Walsh
Lighting Programmer..... Noah Gamboa
Electricians..... Cordelia Cohen, Nicole Jaja, Josue Martinez,
Alex Rice, Victor Richardson, Niall Sulcer,
Ellis Vedar, Benjamin Wendel
Assistant House Managers..... Bradford Barnes, Eric Eberle, Karla Lopez,
Ian Mitchell, Michayla Van Treeck, Fenyxx Wright
Ushers..... Taylor Clark, Tommaso Di Blasi, Nicolette Ellis,
Margaret Franckhauser, Nelia Gill, Elijah Green,
Atika Greene, Kiley Haugen, James Hodges,
David Hunter, Jr., AJ Jimenez, Chelsey Maus,
Ari Moses, Rachel Peralta, Camille Reyes,
Ian Riley, Joyce Robinson, Eric Solis,
Niall Sulcer, Juice Wood
Concessions..... Abi Gonzalez, Monica Greene, Mike Lanahan,
Stephen Lydic, Sondra Mayer,
Regina Niles, Lisandra Stebner



The Actors and Stage Managers employed in this production are members of Actors' Equity Association, the union of professional actors and stage managers in the United States.

The Director and Choreographer are members of the Stage Directors and Choreographers Society, an independent national labor union.

Center Theatre Group is a member of the League of Resident Theatres (LORT), the American Arts Alliance, the Broadway League, Independent Producers' Network (IPN), and the Theatre Communications Group (TCG).

THEATER WORKS USA

**In TheaterWorksUSA's
56 Years of Service:**



100 million+ audience
members entertained



140+
shows produced



440 communities
reached across
North America

OUR MISSION:

To create exceptional,
transformative
theatrical experiences
that are accessible to
young and family
audiences in diverse
communities
throughout New York
City, North America,
and beyond.

WWW.TWUSA.ORG

To learn how you can get
involved and support our
mission in Los Angeles,
email Lpetersen@twusa.org



All Production Photos by Jeremy Daniel. DOT DOT DOT; Arturo Hernandez, Davina Sabnis, Will Bellamy, Sonia Roman, Jianzi Colón-Soto. THE MAGIC SCHOOL BUS: LOST IN THE SOLAR SYSTEM; Back L-R Lindsey Brett Carothers, Kari Gunberg, Tom Meglio, Front L-R Sumi Yu, Junior Mendez, Jared Loftin



Jay Hamrick (1929-2007) and Charles Hull (1931-2023), Founders

Board of Directors

Haley A. Stein, Chair	Tim Freyberg	Leslie Monsky
Michael Harrington, President	Kevin Hooshang	Dionne Nosek
Barbara Pasternack, Vice President	Ann Hull	Judith Ponce
Tom Toice, Treasurer	Hilary Hull Gupta	Chuck Santoro
Andrew Fisher, Secretary	Kim Katz	Anotna Sherry
Suzanne Cohen	Adrienne Lin	Tom Smith
Chuck Cooper	David La Mastro	Anlytha Steven
Mary J. Donohue	Alyssa Mack	Variza Villalba
	Elbert Miller-Wachtel	

Artistic Ambassadors

E. Muffay Abraham	Kapileem Chalfant	Berij Fasel
Lynn Abrams	Kirsten Childs	Justin Paul
Jasani Altadín	Jeff Croiter	Diego Prieto
Kristen Anderson-Lopez	Mimi Dickstein	Daphne Rubin-Vega
Laura Benanti	Stephen Flaherty	Stephen Schwartz
Neli Benjamin	Peter Flynn	Elena Shaddow
Benwolf Bolitt	Jose Llana	Michael Skloff
Dahorah Breydorf	Bobby Lopez	Kate Wetherhead
Andrea Burns	Lary O'Keefe	Sohela Williams
Danny Burstein	Brad Oscar	Jerry Zaks

Thank you to The Chanel Family Foundation, The Shubert Foundation, The Miranda Family Foundation, Consolidated Edison Company of New York, The Lucille Lortel Foundation, The Benevity Community Impact Fund, and all our individual donors for your support of TheaterWorksUSA.

TheaterWorksUSA's public programs are supported in part by the National Endowment for the Arts and by the New York City Department of Cultural Affairs in partnership with the City Council, and are made possible by the New York State Council on the Arts with the support of the Office of Governor Kathy Hochul and the New York State Legislature.



NYC Cultural Affairs

Help us continue bringing exceptional theater experiences to young and family audiences:

TWUSA.ORG/DONATE

FROM THE SONGWRITING TEAM BEHIND
Dear Evan Hansen, La La Land, & The Greatest Showman



A CHRISTMAS STORY

The Musical

BOOK BY
Joseph Robinette

MUSIC & LYRICS BY
Benj Pasek and Justin Paul

ORIGINAL DIRECTION
ON BROADWAY BY
John Rando

CHOREOGRAPHY BY
Warren Carlyle

DIRECTED BY
Matt Lenz

DEC 5 — 31 2019 | AHMANSONTHEATRE.ORG



**CENTER
THEATRE
GROUP**

NEW/ADVENTURES



“ELECTRIFYING. ONE OF BOURNE’S
SMARTEST, SEXIEST SHOWS
EVER”

THE DAILY TELEGRAPH



NEW ADVENTURES AND SADLER WELLS PRESENT

Matthew Bourne's

ROMEO+

JULIET

Music by PROKOFIEV

JAN 28—FEB 25 | AHMANSONTHEATRE.ORG



CENTER
THEATRE
GROUP



THE HIT BROADWAY MUSICAL

FUNNY GIRL

FEATURING
MELISSA MANCHESTER
AS MRS. BRICE

AND INTRODUCING
KATERINA McCRIMMON
AS FANNY BRICE

TICKETS ON SALE DEC 13

APR 2-28 2020 | AHMANSONTHEATRE.ORG

 STATE OF AMERICA

**CENTER
THEATRE
GROUP**

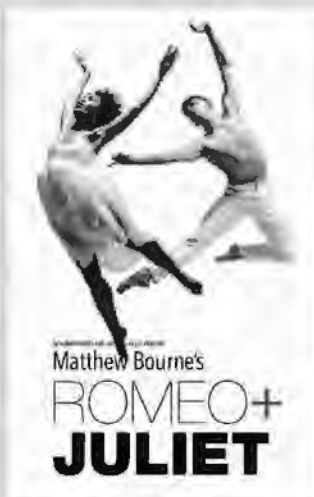
HELLO, GORGEOUS!

AHMANSON 2023/24 SEASON
SUBSCRIBE TODAY!

PACKAGES START AT **\$199**



DEC 5-31, 2023



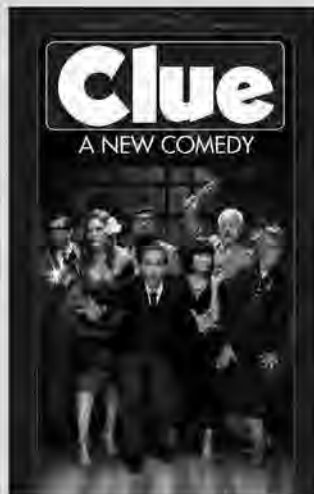
JAN 28 - FEB 25, 2024



APR 2-28, 2024



JUN 5-30, 2024



JUL 30 - AUG 25, 2024

**DON'T MISS THIS
INCREDIBLE SEASON!
THE 5-SHOW
SUBSCRIPTION
PACKAGE STARTS
AT ONLY \$199
PER PERSON!**

AHMANSONTHEATRE.ORG | SUBSCRIBER HOTLINE: 213.972.4444

**CENTER
THEATRE
GROUP**

SNEHAL DESAI Artistic Director | **MEGHAN PRESSMAN** Managing Director/CEO

DOUGLAS C. BAKER* Producing Director | **GORDON DAVIDSON** Founding Artistic Director

Center Theatre Group would like to thank its exceptional staff for their ongoing commitment, dedication, and extraordinary efforts.

ARTISTIC

LINDSAY ALLBAUGH* Associate Artistic Director
 TIFFANY SLAGLE Artistic & Literary Administrative Assistant
 CASEY NICHOLAW, PHYLICIA RASHAD,
 PAULA VOGEL Associate Artists

EXECUTIVE

CAMILLE SCHENKAN* Deputy Managing Director
 KHANISHA FOSTER Director of Equity,
 Belonging & Engagement
 A'RAELLE FLYNN-BOLDEN Staff Programs Manager
 ADRIENNE KNIGHT Assistant to the Artistic Director
 and Managing Director/CEO

MANAGEMENT

NAUSICA STERGIOU* General Manager
 ERIC SIMS* Ahmanson Theatre Presentations Manager
 KATIE SOFF* Associate General Manager
 JEFFREY UPAN* General Management Associate
 KIARA BRYANT Company Manager

EDUCATION AND COMMUNITY PARTNERSHIPS

TRACI KWON* Arts Education Initiatives Director
 JESUS REYES* Community Partnerships Director
 NICO ROSARIO Creative Workforce Initiatives Director
 AURORA LOG Program Manager
 COURTNEY CLARK Digital Learning Manager
 MEIGHAN LA ROCCA Education & Community
 Partnerships Coordinator
 ESTELA GARCIA, CHRISTINE BREIHAN Resident Teaching Artists

ZACHARY BROWN, RAMY EL-ETREBY,
 AJA HOUSTON, JOHNATHON L. JACKSON,
 DAVID JIMENEZ, CARENE ROSE MEKERTICHYAN,
 MARA PALMA, ROBERT PATERNO, TARA RICASA,
 TIANA RANDALL-QUANT, NEGIN SINGH,
 MONIQUE SYPKENS Teaching Artists

PRODUCTION

JOE HAMLIN* Director of Production
 SHANNON G. BICKNELL Production Manager
 KATIE CHEN Associate Production Manager
 BEONICA BULLARD Assistant Production Manager
 CAMBRIA CHICHI Production Coordinator

SHAWN ANDERSON* Head Carpenter (Ahmanson Theatre)
 SCOTT LUCAS Head Properties (Ahmanson Theatre)
 JARED BATTY Head Electrician (Ahmanson Theatre)
 ROBERT SMITH* Head Sound (Ahmanson Theatre)
 SHANE ANDERSON Head Flyrail (Ahmanson Theatre)
 MICHAEL GARDNER* Wardrobe Supervisor (Ahmanson Theatre)
 MARY BORGIA Hair & Make-up Supervisor (Ahmanson Theatre)
 CHRISTINE L. COX* House Manager (Ahmanson Theatre)
 EMMET KAISER* Head Carpenter (Mark Taper Forum)
 MARY ROMERO Head Properties (Mark Taper Forum)
 AARON STAUBACH* Head Electrician (Mark Taper Forum)
 CHRISTIAN LEE Head Sound (Mark Taper Forum)
 LORETTA BUSSEN Wardrobe Supervisor (Mark Taper Forum)
 ZANE WAYNERIGHT Stage Supervisor (Kirk Douglas Theatre)
 CESAR VARGAS Head Electrician (Kirk Douglas Theatre)
 MATTHEW COLLERAN Head Audio and Video (Kirk Douglas Theatre)
 CHLOE JOY Assistant Technical Director

MERRIANNE NEDREBERG* Shop Director
 KATE REINLIB Associate Prop Director
 ERIC BABB Assistant Prop Director
 RAUL VEGA MARTINEZ Shop Supervisor
 SHANTA FARIA DE SA Costume Shop Manager
 CAYLYN DABNEY Resident Assistant Costume Designer
 ASPHORD JACOWAY Resident Assistant Costume Designer

OPERATIONS

PETER WYLIE Operations & Facilities Director
 CHASE ANDERSON-SHAW Kirk Douglas Theatre Manager
 CHRISTIAN TAYLOR Facilities Manager
 NIKI ARMATO Facilities Associate
 JULIO A. CUELLAR* Facilities Assistant
 VANESSA DE LOERA Facilities Coordinator
 JASMINE BRAFF Operations Supervisor
 CURT GAVIN Operations Assistant
 NATALIE MARCEAU, D'ANGELO ANDERSON,
 SIMON J.O. MARTIN, REGINA NILES Drivers
 VANESSA BRADCHULIS, OLIVIA CHOATE,
 PRESSLY COKER, MONICA GREENE,
 PAT LOEB, TWON POPE, SAM UDERO Stage Door Attendants

FINANCE, INFORMATION TECHNOLOGY, AND HUMAN RESOURCES

CHERYL SHEPHERD Chief Financial Officer
 SARAH STURDIVANT Director of Finance & Technology
 DENICE BEHDAD Assistant Controller
 ANAHTI ASHRAFIPOUR Senior Accountant
 XOXHITL ORTEGA Accounts Payable Supervisor
 KERRY LARICK Accounting Assistant
 JESSICA HERMANDEZ Payroll Manager
 JUAN MARTINEZ Payroll Specialist

TOM MEGALE Director of Business Applications
 JANELLE CABRERA TORRES Tessitura &
 Web Administration Director
 JOEY SOLANO Digital Product Manager
 CHIMA OMEAKU Help Desk Support
 CRIS SPACCA* Tessitura & IT Support

JODY HORWITZ* Director of Human Resources
 CRISTINA TORRES Human Resources Generalist

MOSS ADAMS Auditor
 MICHAEL C. DONALDSON, LISA A. CALLIF Legal Counsel
 GIBSON, DUNN & CRUTCHER Legal Counsel

INSTITUTIONAL ADVANCEMENT

SARAH SULLIVAN Director of Institutional Advancement
 SEVAG ABAJIAN Director of Advancement Operations
 RICKY CARTER Director of Major and Planned Gifts
 CRYSTAL DIAZ Director of Events
 PAMELA KUHR Director of Annual Giving
 PAULA MATA LLANA Associate Director of Institutional Grants
 ELIZABETH DELLORUSSO Major Gifts Officer
 OYE EHIKHAMHEN Individual Giving Officer
 ZAIN PATEL Individual Giving Officer
 NICOLE SCIPIONE* Individual Giving Officer
 KATELIN URGO Individual Giving Officer
 CHRISTOPHER ECKHART Donor Communications Manager

WENDY HUI Grants Manager
 MIKE RATTERMAN Telefundraising Manager
 BK DAWSON Senior Analyst, Gift & Accounting Reporting
 HAILEY BRUNSON Annual Giving Coordinator
 ALICE PELAYO Donor Liason & Institutional
 Advancement Assistant
 IRENE CHO Executive Assistant
 AL BERMAN* BRAD GRIFFITH, VARTAN MERJANIAN,
 BENUAMIN SCHWARTZ, PAUL VITAGLIANO Donor Advisors

MARKETING AND GRAPHICS

GARRETT COLLINS Deputy Director of Marketing
 CANDICE WALTERS* Associate Director, Marketing Operations
 DEVANY HARDEN Manager, CRM & Email Marketing
 KATHARINE MEANS Marketing Associate
 ALEXA EDWARDS Marketing Fellow
 CAROLINE THOMPSON/IMPACT 123 Media Planning
 DEANNA MCCLURE Art & Design Director
 JAVIER VASQUEZ Digital Content Producer
 LILA WAKILI Senior Graphic Designer
 CINDY ANDRADE Production Artist

COMMUNICATIONS

BRETT WEBSTER Communications Director
 JESSICA DORHERTY Associate Editorial Director
 BOBBY MARTINEZ Communications Coordinator
 DAVIDSON & CHOY PUBLICITY
 TIM CHOY, PETER GOLDMAN,
 VICTORIA WESTBROOK Publicity Consultants

TICKET SALES AND SERVICES

SHAWN ROBERTSON* Ticket Sales Director
 MICHAEL ZOLDESSY* Associate Director, Ticket Sales
 SKYPP CABANAS* Senior Manager, Ticket Operations
 TINTIN NGUYEN Ticketing Operations Coordinator
 SANDY CZUBIAK* Audience & Subscriber Services Director
 JENNIFER BAKER* Audience Services Senior Supervisors
 CHERYL HAWKER* Audience Services Senior Supervisors
 JONATHAN FLORES Audience Services Assistant Supervisor
 CHRISTIAN UNGER Audience Services Sales Associate
 JESSICA ABROMAVICH, JUSTINE PEREZ* Donor Associates
 JOSHUA BADILLO, VICKI BERNDT* Audience Services Assistant Supervisor
 CLAY BUNKER, FRANK ENSENBARGER, DANIEL GARCIA,
 IVONNE HERRERA, MICHAEL MUNOZ,
 FELIPE ROQUE, SAMUEL ROQUE, JURGEN SANTOS,
 CHRISTINA WRIGHT Audience Services Representatives
 DANUTA SIEMAK* Subscriber Services Supervisor
 CHRISTINA GUTIERREZ* Subscriber Services Asst. Supervisor
 LIGIA PISTE* Subscriber Services Senior Representatives
 SARAH K. GONTA* Box Office Treasurer
 KEANA JACKSON, MICHAEL VALLE* 1st Assistant Treasurers
 KAITLYN GALVEZ, MICHAEL KEMPISTY*, RICHARD RUBIO,
 LUIS ESPINOZA 2nd Assistant Treasurers
 SD&A TELESERVICES, INC. Outbound Sales Partner
 JEFFREY LIMONCELLI, KATHLEEN LITTLEFIELD,
 DIANE WARD Subscription Sales Representatives

ARTISTIC DEVELOPMENT & COMMISSIONS

As part of our commitment to supporting new plays and playwrights, we foster and develop a broad range of theatrical work from diverse artists locally, nationally, and abroad.

Artists creating new work commissioned by Center Theatre Group this season:

AZIZA BARNES	YOUNG JEAN LEE	CYNTHIA GRACE ROBINSON
LISA D'AMOUR	MATTHEW LOPEZ	SARAH RUHL
LARISSA FASHORSE	ROGER Q. MASON	T.TARA TURK-HAYNES
JENNIFER HALEY	TAHIRIH MOELLER	LUIS VALDEZ
ALESHEA HARRIS	JANNINE NABERS	PAULA VOGEL
GERALDINE ELIZABETH INDA	QUI NGUYEN	KAREN ZACARIAS
LISA KRON	LYNN NOTTAGE	
KIMBER LEE	MARCO RAMIREZ	

LA. WRITERS' WORKSHOP

Since 2005, we have invited local playwrights to spend a year researching and writing a new work with the feedback of their fellow writers and artistic staff as part of our LA. Writers' Workshop.

Learn more at CTGLA.org/Artists.

2023/24 COHORT:

AMY BERRYMAN	CHRISTOPHER OSCAR PEÑA
INDA CRAIG-GALVÁN	RAMIZ MONSEF
ISAC GÓMEZ	JASMINE SHARMA

LA. ARTIST RESIDENCIES

DIANA BURBANO
 LARISSA FASHORSE
 MICHAEL FEINSTEIN
 MICHAEL JOHN GARCÉS
 DANIEL ALEXANDER JONES
 MADELINE SAYET
 KRISTINA WONG

CRITICAL MASS PERFORMANCE GROUP
 ENSEMBLE STUDIO THEATRE LA IN PARTNERSHIP
 WITH CHALK REP
 NATIVE VOICES AT THE AUTRY