

# PARISH OAK



APRIL 2016

# Parish Oak Activity Calendar

## April 2016

Sun	Mon	Tues	Wed	Thurs	Fri	Sat
					1 <sup>st</sup>	2 <sup>nd</sup>
3 <sup>rd</sup> <b>10am</b> <b>St George's:</b> <b>Communion</b>	4 <sup>th</sup>	5 <sup>th</sup>	6 <sup>th</sup> <b>The Oak,</b> <b>Smannell:</b> <b>Quiz Night</b>	7 <sup>th</sup>	8 <sup>th</sup>	9 <sup>th</sup>
10 <sup>th</sup> <b>10am</b> <b>Christ Church:</b> <b>Matins</b> <b>6pm</b> <b>Elizabeth House:</b> <b>Evening Service</b>	11 <sup>th</sup>	12 <sup>th</sup>	13 <sup>th</sup>	14 <sup>th</sup>	15 <sup>th</sup>	16 <sup>th</sup> <b>Enham</b> <b>Country &amp;</b> <b>Western Club:</b> <b>Steve Layne</b>
17 <sup>th</sup> <b>10am</b> <b>St George's:</b> <b>Communion</b>	18 <sup>th</sup>	19 <sup>th</sup>	20 <sup>th</sup> <b>The Oak,</b> <b>Smannell:</b> <b>Quiz Night</b>	21 <sup>st</sup>	22 <sup>nd</sup>	23 <sup>rd</sup>
24 <sup>th</sup> <b>10am</b> <b>Christ Church:</b> <b>Communion</b>	25 <sup>th</sup>	26 <sup>th</sup>	27 <sup>th</sup>	28 <sup>th</sup>	29 <sup>th</sup>	30 <sup>th</sup>

# USEFUL TELEPHONE NUMBERS

## The Church

Priest in Smannell and Enham	Rev. Val Gagen	748065
Pastrow team Priest-in-charge	Rev Alex Randle-Bissell	512161
Churchwarden	Pete Bowker	357201
PCC Treasurer	Noel Pope	352968
PCC Secretary	Margaret Smith	357487
Gift Aid Secretary	Rod Bowker	357201
Parish Magazine Editor	Peter Calcraft	512262

## Local Services

Smannell & Enham (CE) School		323201
Enham Club, Landale Wilson Hall		352098
Enham Parish Council	Chairman: Leslie Francis	335678
Smannell Parish Council	Chairman: Rod Bowker	357201
Test Valley Borough Council		07801 948036
Enham Service Station		352651
Enham Shop and Post Office		335678
Enham Trust		345800
Andover Leisure Centre		323355
The Oak (Public House)		363075

## Emergencies

Hospitals Andover Memorial		358811
Royal Hampshire County		01962 863535
NHS Direct		0845 4647
Neighbourhood Watch	Richard Budge (Smannell)	351129
	Meg Chant (Little London)	355167
	Tim & Leslie (Enham)	335678
<b>Police</b>	<b>999 or 101 or 0845 045 45 45</b>	
PCSO Elly Hughes		<b>08450 454 545</b>
RSPCA		08705 555 999
Samaritans		0845 7909 090
Social Services - Andover		387400

## Utilities

Southern Water - Emergencies		0845 278 0845
Southern Electric - Emergencies		0845 770 8090
British Gas - Emergencies		0800 111 999

# MERIT re SPECIALISTS



TYRES ▼ EXHAUSTS ▼ BATTERIES ▼ BRAKES ▼ AIR CONDITIONING  
4 WHEEL ALIGNMENT ▼ MOTORCYCLE TYRES ▼ PUNCTURE REPAIRS

## CALL NOW ON: 01 264 333044

WE HOLD OVER 30,000 LEADING BRAND TYRES IN STOCK IN ANDOVER



**BRIDGESTONE**  
*Your Journey, Our Passion*

**Continental**  
The Future in Motion

**GOODYEAR**

**DUNLOP**

**AVON**  
TYRES

**PIRELLI**

**COOPER TIRE**

**Firestone**

PLUS A FULL RANGE OF ECONOMY TYRES  
AT **EXTREMELY** COMPETITIVE PRICES

**VISIT**

[www.merityre.co.uk](http://www.merityre.co.uk)  
TO FIND YOUR NEAREST  
CENTRE OR TO  
**BUY TYRES ONLINE!**

33A WEST WAY,  
WALWORTH BUSINESS  
PARK, ANDOVER  
HAMPSHIRE, SP10 5JG

Open 7 days a week. All major  
credit cards accepted. Fleet  
and company cars welcome.



## EDITORIAL

So the seasons change and in comes Spring!

The Parish Oak this month seems to be a real pot pourri of variety. There is a winning magazine entry in the Smannell and Enham School Literacy competition to write an article reviewing the Space Seeds project that they have all been gripped with over recent weeks.

If you go to the Parish Oak website at [www.parishoak.co.uk](http://www.parishoak.co.uk) you will find a further 19 entries in the competition, but congratulations go to Maddy for her winning entry which is featured on page 6.

This project really meets all my community involvements, for as well as editing the Parish Oak, I take on duties as a Governor at the school. I provide the Literacy Lead for the Governors, helping to ensure that the standards are continuing to improve in this vital aspect of the children's education. So this project really does cover all these areas of involvement. We urgently need more Governors and if this is a service you would like to explore further go to page 8 for more information.

Then we have The Big Ask in the magazine centre pages. The Big Ask is a questionnaire organised by the Benefice Churches and they are seeking your opinion in the community at large so that they can develop more appropriate services to meet your needs. Please do pull out the centre pages (you will never hear me suggest that again!!) And let the Church know your views.

On page 14 we continue with our "Who Is.." Articles and this month we feature Sophie Porter. Do have a read...I continue to be amazed at the contribution that so many make into our community.

Finally, but certainly not least, on page 12 we say a big Thank You to Pete Bowker for her long contribution to the community as Church Warden.

So enjoy the magazine..and the website!

Have a great time in the Spring sunshine and welcome the warmer weather.

***Peter Calcraft***



## **CHURCH IN SMANNELL & ENHAM**



### **Ramblings from the Rectory ...**

Well I do hope that in April we may all be enjoying some lovely Spring sunshine which will entice us out into our gardens. Spring flowers can be such a breath of delight after the cold darker days of winter.

But as I write this my head is still in the mountains....we have just recently returned from Austria which was absolutely beautiful with thick snow and sunshine on the mountain tops.

We visited a castle in Bavaria, we travelled on the Alpine Glacier Express in Switzerland and we then spent time at an Austrian ski resort where we took the cable car to the top. Philip was a little apprehensive about climbing on to a moving cable car, but he decided it was worth it for the view at the top, which was just stunning.

I do love mountains...you might say that they stir my soul and help me to see the wonders of God's creation all around us.

We may sometimes need to travel to see the wonders of God, but we can also see God at work in creation by looking at the beauty of a single flower growing in our gardens. So we can search for God in all sorts of places, but on returning to the start of our journeyings, we can discover him where we began.

But in our Lent house group last week we looked at a Bible story where Jesus travelled along a road as he journeyed to Emmaus. The disciples who met him on the road were immeasurably changed by the experience.

Jesus had walked alongside them and helped to explain the scriptures to them. They were then full of wonder and rushed back to Jerusalem to tell the others about their experience.

Jesus walks with us too on our journey through life and encourages us to get alongside others to help them to understand the good news.

Our Lent groups have been a time when we have enjoyed sharing our faith with each other. But a house group doesn't just have to be for Lent and if you are interested in starting a new group, then do let me know and we can explore this together.

We are beginning to plan together how family services at Christ Church, Smannell might develop. There have not been any family services for some while, but these will now be on the 5<sup>th</sup> Sunday of the month, at 10am.

So the first one will be on Sunday 29<sup>th</sup> May from 10am till 10.40am. and we hope that the school choir will be able to sing for us and that you might bring your favourite cuddly toy with you too. It will be a more informal type of worship service and there will not be communion, so that it is open to everyone, from babies in arms to our eldest seniors, along with the cuddly toys of course too....

Do put the date in your diaries and the next two are on the 31<sup>st</sup> July, when we hope to have a pet service, and the 30<sup>th</sup> October when we will have a service of light.

And so do enjoy the lovely Spring flowers, as well as the mountains...if you get to see any...

Have a good and blessed month, **Val**

***Rev. Val Gagen***  
**01264 748065**

## Church Notices

### **CHURCH PARISH AGM**

The AGM will be on Tuesday 26th April at 6.30 pm at The Oak pub. There will be cottage pie available afterwards.

Please come along to select new church wardens as I am retiring.

### **PARISH BBQ**

The BBQ will be on 17th June, kindly hosted by Michael and Bregje Dawson at Finkley House. Details will follow later.

***Pete Bowker, Church Warden***

### **PARISH HOUSE GROUP**

We really enjoyed meeting together in Lent and exploring our faith more deeply.

So please let Rev Val know if you would be interested in coming to a monthly house group or prayer group?

### **EASTER SERVICES**

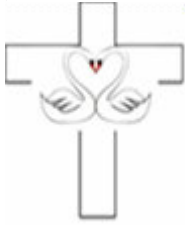
Thank those who decorated our churches so well for Easter, and those who supplied the flowers for our Mothering Sunday service.

### **Prayer**

Please hold Derek Cooper in your prayers..... he has had a couple of falls and broken his leg and is currently in Southampton hospital....thank you.

***Rev. Val Gagen***





*To love, to learn, to live ... to leave a legacy*

## **SMANNELL & ENHAM CHURCH OF ENGLAND PRIMARY SCHOOL**

Sport seems to be the theme of our piece this month. On Monday 14<sup>th</sup> March we had a fantastic experience as the British Olympic athlete, Luke Lennon-Ford visited our school. Luke is a medal winning 400 metre runner who is a real prospect for this year's Rio Olympics.

All of our children took part in four sponsored activities with Luke. These activities were all ones that needed lots of energy to be used for a very intensive one minute. There were certainly lots of red faces by the end of the afternoon. Luke was then able to spend some time sharing some of his training tips with the children before ending the afternoon with a question and answer session.



Our Year 5 and 6 footballers have recently played in the Andover Rural Schools' tournament. The teams were so evenly matched that we were one of 4 teams in our group to have an equal number of points. It was so close that the goal difference rule had to be used.

You may well remember that in an earlier Oak piece this year I mentioned the huge impact Tim Peake's space-walk had on our children. Well we've taken it one step further now. We've been lucky enough to acquire some of the seeds that Tim has taken into space as part of his experiments. On the following page you'll be able to find out all about them...

***Peter Shaw***  
***Head Teacher***

## Space Seeds Newspaper Article - Maddy

Thursday 10<sup>th</sup> March

price : 60p

photo

so excited we watched the launch and Tim Peakes real space walk.

Nervously, for an e-mail. After a few weeks we finally

Tim Peakes blogged by on January 20th to announce child's

Tim Peakes mission was called Principia

got an e-mail saying we got some space seeds.

At 04:26 AM on the 2nd of March 2016 the space seeds arrived on Earth.

as soon as we found this out we made Principia badges.

One of my class mates said "I can not wait to grow some space seeds."

Scott Kelly of NASA bought them back from space. Andreas Mogensen transported the seeds to space 6 months ago so that Tim Peake could look after them in space.

How the seeds got to swallow class.

(However) On the e-mail it said

6 months ago Tim Peake started his mission by going on a rocket to space. Then he eventually got on board the ISS. (The International Space Station) Smanell and Enham Primary school were

For this lucky opportunity to have some space seeds our class teacher, Mrs Rasberry, filled in an application form on behalf of Swallow's class.

we are giving us one pack of earth seeds and another pack of space seeds however they are not telling us which is which so we treat both of them equally.

6 months ago Tim Peake started his mission by going on a rocket to space. Then he eventually got on board the ISS. (The International Space Station) Smanell and Enham Primary school were

To show how eager we were we had to fill in a sheet about creating our own space garden.

A few months later we had another e-mail saying the seeds have landed back on Earth and we will have them between the 12<sup>th</sup> or 13<sup>th</sup> of April.

Once we sent all our work off we waited

The seeds landed at the space station on earth accompanied by Scott Kelly, then they travelled to Kazakhstan then Moscow then to Houston. America to the UK and finally to (the UK) Smannell and Enham primary school.

What we are going to do with the seeds.

We are going to sow the seeds on the 19<sup>th</sup> and 20<sup>th</sup> of April. We are going to use milk bottles so the seeds have an equal amount of light because milk bottles are translucent. Our class teacher said "This experience is going to be amazing for the children." The experiment is to see if having the seeds in space will have an effect on its growth. Also so they can grow food in space. 2kg of rocket seeds (the seeds that have been in space) have been given to 10,000 schools. This experiment involves the Royal Horticultural Society, who

partnered with ESA to make this experiment a success.

As you can see swallows class are so excited about this experiment. Smannell and Enham primary schools' Head teacher said "This is a great opportunity to help me ESA and for the children to develop their learning." Now we are waiting to get the seeds we can start to plan our garden so the seeds can grow.

### Editor's Note

Well done Maddy!

It was actually quite difficult to choose a winner and special mention should also be given to Louis and Emily B. for their efforts.

Please go to the magazine website at [www.parishoak.co.uk](http://www.parishoak.co.uk) to see a selection of the other articles.

I'm looking forward to seeing the plants as they grow from these fantastic seeds that have come from Space back to Earth.

Well done everyone...

## The Smannell and Enham Church of England (Aided) Primary School



*To love, to learn, to live ... to leave a legacy*

**The Smannell and Enham Church of England (Aided) Primary School** is currently in need of new Foundation Governors.

Governors are one of the largest volunteer forces in the country and have an important part to play in raising school standards. The role of the governing body is absolutely key to the effectiveness of a school. Ofsted (the national inspection body for schools) has noted that the most effective schools demonstrate effective leadership and management, and that includes the leadership brought by the governing body.



Our school Governing Body is made up of people who come to us through a variety of routes and with a range of different backgrounds, skill and experiences, but they are all volunteers who work together for the benefit of the School and are the link between the School and the community it serves.

The role of the Governing Body is a strategic one and its key functions are to set the aims and objectives for the school; set the policies and targets for achievement; monitor and evaluate the progress the school is making, all this while being a source of challenge and support to the headteacher (a critical friend).

This isn't an application to be taken lightly, as it involves time, energy and a willingness to become involved in the life of the school on a regular basis over at least four years. However, it is very rewarding, as together we can strategically input into the school and see another generation of children growing in knowledge and development within our community. A Foundation Governor represents the Church of England and should be a regular communicant within the Church.

We would be delighted to hear from anyone who has an interest in the performance of the school, but also a willingness to listen and help us make informed decisions to develop the school forward.

**Contact Peter Calcraft on 01264 512262 ([editor@parishoak.co.uk](mailto:editor@parishoak.co.uk)) or Paul Sexton on 07766 162347 ([paul@colvinnet.com](mailto:paul@colvinnet.com)) to discuss how you can be involved.**

## **Enham Alamein Parish Council**

At the Enham Alamein Parish Council meeting in March the following items were discussed:

- Improvements for the childrens play areas is progressing with Councillor Cox and Councillor Jones organising a questionnaire for residents to put forward their ideas of what they would like to see in both Turnill Court and Enham Chase.
- It was agreed to purchase a "No Speed" indicator device to be installed at the north end of the village.
- An introduction to the services of The Mens Shed in Enham was met with interest and approval and the Parish Council look forward to supporting their efforts.
- The winter food parcels kindly donated by Lloyds bank and organised by Age Concern were gratefully received by a number of residents.
- The Village agent scheme has started with posters and leaflets having been distributed to all residents. Proposals for a monthly "Drop In" session is being organised.
- The community activities group is organising a street party to celebrate the Queen's 90th birthday. to be held on Sunday, 11th June. There will be more details to follow.

***Leslie Francis***  
***Chair, Enham and Alamein Parish Council***

## Enham Alamein Shop and Post Office

- Farm Fresh produce has arrived ! - fresh fruit & vegetables delivered twice weekly are pre-packed and quality assured.
- The Friday Fish & Chip menu has been expanded to offer Home made curry sauce and Mushy peas. An ideal meal for the end of the week - give us a call and enjoy the freshly cooked taste.
- We have a new Fresh Fish supply from Brixham. delivered 6 days a week. We can order plaice, lemon sole, mackerel, haddock and salmon fillets as well as seasonal goods - please do enquire.
- We are busy planning some major improvements to the shop including a fresh new look and more extensive range for all your shopping needs - more details to follow - but good times ahead!
- We cook fresh hot food to-go including Rollover Hot Dogs each day together with Bread ,baquettes pastries and more. All sandwiches and rolls are made fresh each day on the premises and if you have any particular requirements please do let us know
- Caroline & I have been appointed Village Agents. Sponsored by Age Concern, Hampshire County Council and Enham Alamein Parish Council we are here to support anyone who may need assistance.

best wishes

***Leslie & Tim***

### **Parish Oak Advertising Rates**

**The Parish Oak is a monthly magazine that has an excellent avid readership and covers all households in Smannell, Little London, Enham Alamein, Finkley and Upper Enham.**

<b>Full page (12 issues per year)</b>	<b>£ 120</b>
<b>Half page</b>	<b>£ 80</b>

**One off insertions, or leaflet distribution by negotiation.  
A5, black and white. 450 homes distribution.**

**Contact Noel Pope by email at [advertising@parishoak.co.uk](mailto:advertising@parishoak.co.uk) or speak with Peter Calcraft on 01264 512262 for further information.**



Peta Wilkinson CEO

01264 345800

Hello Everyone,

I do hope you've been enjoying a lovely Easter break; full of crisp sunny mornings spent with the ones you love, and indulging in sweet treats as the days become longer and the nights shorter...

Spring is a truly delightful time of year – a time for new beginnings, new life, and new opportunities – and this Spring marks for us here at Enham Trust the growth of some incredible developments.

Our newly renovated Cedar Park apartments are now available for short term stays, respite care or rehabilitation stays; perfect for those who require intensive support for a limited period of time.

Looking back through recent events, I'm so grateful to global leader in the science of heart valves and hemodynamic monitoring, Edwards Lifesciences, who recently donated \$5000 towards the purchase of a fully accessible bicycle for our disabled clients to use, in order to improve their mobility and overall confidence – such a difference this donation will make!

Also last month, we were fortunate enough to welcome some influential Members of Parliament to visit our services, learning more about the wonderful work that we do across the country to ensure disabled and disadvantaged people live as independently as possible.

After the success of last year's Fashion Show in Newbury, we're overjoyed that Person Stylists House of Colour will be holding a Fashion Show at Audleys Wood Hotel in Basingstoke on 28<sup>th</sup> April; promising to be a very special evening.

More information about any of the above can be found on our website: [www.enhamtrust.org.uk](http://www.enhamtrust.org.uk)

Best wishes,

A handwritten signature in black ink, appearing to read "Peta Wilkinson". The signature is fluid and cursive, with a long horizontal stroke extending to the right.

***Peta Wilkinson, CEO***

## **Mrs Pete Bowker, Church Warden extraordinaire**

At the Annual Meeting of the Parochial Church Council, to be held at the Oak on Tuesday 26<sup>th</sup> April, Pete Bowker will be standing down from her position of Church Warden for the Parish of Smannell with Enham Alamein. This will bring to an end a period of exceptional service to the local community that started some 12 or more years ago, not long after Pete and her husband Rod moved into the village, having bought Jubilee House from an earlier Church Warden, Alan and his wife Susan Joseph.

At that time we had not long before been faced by the simultaneous resignations of two Wardens, the above mentioned Alan, and Nigel Humphreys, both of whom left the village for pastures new. Bob Wheadon and John Kinchenton filled the breach, with Bob subsequently handing over to Pete once the waters had settled somewhat.

Pete went into action like a veritable tornado, and has not faltered for all these years. Originally her role was primarily looking after Christ Church, Smannell, with John caring for St Georges, Enham Alamein, but when John retired, Pete was the sole Church Warden in the Parish with responsibility for both our churches.

Perhaps Pete's greatest ability has been to cajole or persuade parishioners what had to be done, and under her leadership the Parish has progressed. Pete has served thus far three vicars, ensured that services have been maintained at both churches on a regular basis, and seen the parish incorporated initially into the Knight's Enham Benefice, and latterly into the new Pastrow Benefice.

She and Rod have been generous hosts – holding fund raising events at their house, such as the Valentine's evening and Spanish supper in 2015. Lent lunches, village barbeques, Ride and Strides have all been maintained. Christ Church has become a popular wedding venue, and St Georges' links with the military have been maintained at the annual Alamein service.

Pete's demeanour and her Namibian accent was a formidable combination, and it was very difficult ever to say NO to her. Indeed my youngest son nicknamed her "Scary Lady" from a very young age but no one can doubt that her enthusiasm and determination achieved many things that otherwise might never have been completed.



Please come to the APCM at the Oak on 26<sup>th</sup> April to give thanks to a remarkable lady. I am sure that my phone will continue to ring at home or the office (who did give her my direct line???) but I for one will be delighted if her energy can continue to be channelled in the support of her successors.

We have a lot to thank Pete for her devotion, drive and enthusiasm over the many years of her tenure as Church Warden.

Pete has been a shining light in the service of our church and community - thank you Pete Bowker!

**Noel Pope**

**Achieve Fitness: Active Aging - Sit and Keep Fit**  
COME ALONG AND BRING A FRIEND

Enham Shop and Post Office - Back Room  
Tuesday 11.10am - 40min class:

The class will be low intensity, low impact  
£4 per class - payable termly



Exercise is important to active aging

As we age (65yrs+) we spend 10 hours a day sitting (average);  
watching TV, reading, knitting, travelling, playing chess, at a computer etc.

If we stay active the risk of physical and mental illness is reduced;  
heart disease, stroke, type 2 diabetes, some cancer, depression and dementia.

Most people want to stay in touch with society and being active can help us achieve that;  
community, friends, family, neighbours

PLEASE CONTACT ME FOR FURTHER INFORMATION

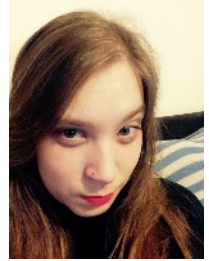
And to register your interest (so I have an idea of numbers please)

Achieve Fitness, Karina, 01264 737605 / 07990 588679 / [karinagibbsaf@gmail.com](mailto:karinagibbsaf@gmail.com) /  
<https://www.facebook.com/achievefitness.org.uk>

## Who is Sophie Porter?

### **Tell us a little bit about you, and what fills your day?**

I have my own business as a Freelance Writer, and I also work at Enham Trust as Press Officer; helping to promote events about all the wonderful work that the charity does across the country, supporting disabled and disadvantaged people to live as independently as possible.



### **What keeps you motivated?**

As part of Enham Trust I get to meet new people and discover how far they've come with support from the charity. There are so many people that come to the Trust without confidence, a job, or the self-belief that they can do things their own way; but the right support changes that.

### **What are you most proud of?**

I'm proud of everything I've achieved so far, both for the Trust and outside of it. Juggling 2 jobs and a 3 year old daughter on my own is intense! But I wouldn't change anything. As part of the Trust I get to make a positive difference to peoples' lives. I have Cerebral Palsy and walk with crutches, so Enham Trust's ethos resonates with me.

### **What would be the single thing you would like to do differently or see change?**

I'd like to see society's perceptions of disability change. To live with a disability doesn't make a person any less capable than those who don't have a disability...we just have to find a different way of doing things! People question my ability to drive a car, hold down a career or achieve academically because my legs don't work well. When I tell them I have a Master's Degree and am starting a PhD this year, people sometimes have difficulty understanding how...

### **What makes you tick?**

I love a challenge! When people tell me I can't do something, I make it my mission to do it; I'm very stubborn! But that's why I chose to work for Enham Trust; they see the possibilities for disabled people, never the impossibilities.

### **What three words would your friends use to describe you?**

I'd like to think: strong, independent, and conscientious.

### **Any words of wisdom you would like to share?**

Never let anyone tell you that you can't do something, there's always a way!

## Mindfulness

You can't help but notice that references to mindfulness are everywhere – magazine articles, social media, TV – so what is it? A useful definition might be....

1. the quality or state of being conscious or aware of something.
2. a mental state achieved by focusing one's awareness on the present moment, while calmly acknowledging and accepting one's feelings, thoughts, and bodily sensations, used as a therapeutic technique.

The Mindfulness All-Party Parliamentary Group (MAPPG) issued a report in October 2015, which detailed key objectives for promoting mindfulness:

- **In Health**, it recommends expanding the opportunity for people who experience recurrent depression to take a course of Mindfulness-Based Cognitive Therapy (MBCT), as well as funding the training of teachers to deliver those courses.
- **In Education**, it recommends schools pioneering the further development of mindfulness training for teachers and young people.
- **In the Workplace**, it urges government departments to take a lead by training their own staff in mindfulness, and encouraging examples of best practice and quality research.
- **And in the Criminal Justice System**, it invites consideration to be given to offering mindfulness training to offenders with depression.

Without our paying too much attention, the seasons provide us with a non-deliberate way of practising mindfulness. As we approach Spring, and notice the budding flowers and trees; the warmer temperatures and winds touching our skin; the smell of freshly cut grass; and the sounds of birds tweeting as the morning brightness wakes us all earlier, we are all practising an element of mindfulness!

Sources: <http://www.mindfulnessfoundation.org.uk/>

*Helen Murphy*

## SERVICES IN SMANNELL WITH ENHAM ALAMEIN PARISH

*April 2016*

***Sunday 3<sup>rd</sup> April***

*10.00 a.m. St George's, Enham*

***EASTER 2***

*Holy Communion*

***Sunday 10<sup>th</sup> April***

*10.00 a.m. Christ Church, Smannell*

*6.00 p.m. Elizabeth House, Enham*

***EASTER 3***

*Matins*

*Evening Service*

***Sunday 17<sup>th</sup> April***

*10.00 a.m. St George's, Enham*

***EASTER 4***

*Holy Communion*

***Sunday 24<sup>th</sup> April***

*10.00 a.m. Christ Church, Smannell*

***EASTER 5***

*Holy Communion*

***Sunday 1<sup>st</sup> May***

*10.00 a.m. St George's, Enham*

***EASTER 6***

*Holy Communion*

**Enquiries for Baptisms, Weddings or Funerals in the Parish please visit vestry hour at Charlton Church, on Wednesdays, between 5.30 and 6.30pm or call the Priest in Charge, Val Gagen (748065) or the Churchwarden, Pete Bowker (357201).**

### PARISH REGISTER

***Funeral***

Marina Lillian Davis on Thursday 25<sup>th</sup> February 2016. Funeral at Christ Church, Smannell and committal at Basingstoke Crematorium

*I shall not forget you.*

*Look, I have engraved you on the palm of my hands (Isaiah 49 v15-16)*

# THE PASTROW BENEFICE

*Sharing the love, grace and truth of Jesus Christ*

# THE BIG ASK



Community

## QUESTIONNAIRE

What exactly is 'The Big Ask'?

We want your opinions! Your local churches are thinking about what are the needs of our communities? Part of 'The Big Ask' is to ask the community surrounding the churches we serve, 'How do you think your local church could help in meeting those needs?' It's an important question because in an ever-changing and challenging landscape it's an opportunity to connect with each other and to help in shaping the church's mission over the next few years and beyond.

### **What do I need to do?**

At anytime before **24<sup>th</sup> April** please fill in this questionnaire and post it a collection box located at one of the places listed below. Please be assured that there are no right or wrong answers, or indeed anything that shouldn't be written; it's really important to be honest and transparent. If you would like to discuss any issues you may have, or you would like someone to collect your questionnaire, please do contact me on 01264 512161. If you would prefer to complete this survey online, the address is:

<https://www.surveymonkey.com/r/BDQ5SVD>

Blessings, and thank you in advance for your responses

*Alex*

Revd. Alex

### **THE BIG ASK COLLECTION BOXES CAN BE FOUND AT:**

Charlton	St Thomas' Church or The Royal Oak
Hatherden	Christ Church, Hatherden School or The Bell
Penton	Holy Trinity Church or The White Hart
Weyhill	St Michael's Church or The Weyhill Fair
Tangley	St Thomas' Church or The Fox Inn
Smannell	Christ Church, Smannell School or The Oak
Enham Alamein	St George's Church or The Village Post Office

THE BIG ASK COMMUNITY QUESTIONNAIRE

PLEASE DETACH THIS QUESTIONNAIRE AND PUT IT IN THE BOX AT ONE OF THE COLLECTION POINTS BEFORE **24<sup>th</sup> April**

Which Village do you live in? .....

If you would like to discuss anything further with a member of the church in your village, please put your name and contact number here:.....

.....  
.....

1. What do you think are the greatest needs in our community?

2. To what extent are these needs being met in our community?

3. What do you think are ways in which your local church can practically support our community?

4. How do you think your local church might attract people who find traditional church worship irrelevant??

5. Would you welcome the opportunity to learn more about the Christian faith in an informal way and somewhere other than church? If so, how?



## PARISH OAK *magazine website*

*Local community news for  
Smarwell, Easton Atlantic, Little London, Fintley and Upper Easton*

### **Now why should I bother to go to the Parish Oak magazine website?**

*Because there is so much more at [www.parishoak.co.uk](http://www.parishoak.co.uk) than just the information found here between these paper covers..*

***Local Buy and  
Sell Items  
available***

***You might just land a bargain...***

***A gallery of  
local pictures***

***We will be building a local pictorial  
library of our community...why not  
help it along?***

***A wealth of  
information  
always  
available***

***Ever needed to know what time the  
bus goes by?***

***Ever needed to know the number  
for the Andover Hospital?***

***Or the emergency number for Gas  
or Electricity?***

Go online at [www.parishoak.co.uk](http://www.parishoak.co.uk)

to see what the rest of the website looks like!

Join the Parish Oak on Facebook at [www.facebook.com/parishoak/](https://www.facebook.com/parishoak/)



Be instantly connected to the latest news from your local community through the Facebook page. Provide us with your feedback and enjoy images - past and present - of the local area.

## **John Pike Coaches**

**Taxi and Minibus Hire**

**49-seater executive coaches for rent**

**- other sizes also available**

**01264 33 77 44**

THE ONLY NUMBER YOU NEED FOR:  
LOCAL AND LONG-DISTANCE RUNS  
DAILY AIRPORT RUNS - DOOR-TO-DOOR  
HEATHROW AND GATWICK - ADVANCE BOOKING ADVISABLE

FARESHARE AVAILABLE IN ANDOVER AREA

77 Scott Close, Walworth Industrial Estate, Andover, SP10 5NU



# PHIL COX DECORATIONS

## Your local decorator



- PRIVATE/RESIDENTIAL
- INTERIOR/EXTERIOR
- FULLY INSURED/ALL WORK GUARANTEED
- ALL WITH A FRIENDLY AND PROFESSIONAL SERVICE

REFERENCES AVAILABLE UPON REQUEST: **07795385379**

IF YOU ARE INTERESTED PLEASE CONTACT ME IN THE FOLLOWING WAYS:

LETTER: **20 ALAMEIN ROAD, ENHAM ALAMEIN SP11 6HR**

EMAIL: **philwcox@hotmail.co.uk**

HOME PHONE: **01264357579**

# HURSTBOURNE OSTEOPATHY PRACTICE & SPORTS INJURIES CLINIC

**FOR APPOINTMENTS CALL  
(01264) 736007**

Muscular and joint stiffness and pain due to:  
Age, wear & tear, poor posture, repetitive strain.

Back and neck pain:  
including headache, 'trapped nerve', sciatica  
Frozen shoulder.

Back pain during and after pregnancy.  
Acute and long-term sports injury treatment and advice  
to ensure rapid return to activity.

---

**Victoria House, Hurstbourne Tarrant, SP11 0BD; The one with the skeleton!**  
Email: [enquiries@hbtosteopathy.co.uk](mailto:enquiries@hbtosteopathy.co.uk) Web: [www.hbtosteopathy.co.uk](http://www.hbtosteopathy.co.uk)

## The Andover Printing Company

- ✓ Business Stationery
- ✓ Brochures & Leaflets
- ✓ Marketing Material
- ✓ Full Artwork Facilities
- ✓ All Artwork Accepted
- ✓ Small or Large Quantities
- ✓ Full Photocopying Facilities
- ✓ High-Volume Copying



**COME AND SEE US  
ON THE WALWORTH  
BUSINESS PARK**



**01264 334220**  
[www.andoverprinting.co.uk](http://www.andoverprinting.co.uk)



Homing Enquiries 0345-2601501 or [andovercats.org.uk](http://andovercats.org.uk)  
 Fund-raising & volunteers 0773-242196 or  
[coord@andovercats.org.uk](mailto:coord@andovercats.org.uk)  
 Items for resale 01256-892773

We are looking for a volunteer to be our treasurer. It isn't a big commitment, a couple of hours a week perhaps. An online accounting program is provided by our Head Office. You would need to live locally in order to collect money and take it to the bank every month.

We spent a very enjoyable Valentine weekend running a raffle at Andover Garden Centre. The Garden Centre gave us some prizes and we raised £127.

Cloudy and Digger have found a lovely home. It is nice to think that there are people out there who care about elderly cats. Digger is now friendly and purry but her sister is still very nervous.



Rambo, this month's cat, doesn't really live up to his name. He is very large and strong but is a friendly cat and dribbles a lot when purring.

He definitely doesn't like other cats. He is about 5 years old and was found straying.



# HBS FUELS

A local, family run company delivering  
fuel to homes and businesses.

**FREE DELIVERY ON:**

Kerosene  
Gas Oil  
Bulk LPG  
Gas Bottles

**EXPERT OIL & LPG ENGINEERS FOR:**

Servicing & Maintenance  
Boiler Breakdowns & Repairs  
New Boiler Installations  
Aga & Rayburn Servicing  
Free Estimates & Surveys



Please call 01264 860263

[www.hbsfuels.com](http://www.hbsfuels.com)

Thirt Way, Martins Lane, Chilbolton, Stockbridge,  
Hampshire. SO20 6BL



# The Enham Club

*The family orientated village social club right on your doorstep*

What's On ?



## BT Sport has arrived at the Enham Club

Contact: [enhamclubltd@hotmail.co.uk](mailto:enhamclubltd@hotmail.co.uk)

15 Newbury Road, Enham, SP11 6HG

01264 352098



Like us on  
Facebook



Like us on  
Facebook



# **Enham Club Ltd Country & Western**

**15 Newbury Road, Enham, SP11 6HG**

16TH JAN.	PETER SHAW
20TH FEB.	KEVIN BULL
19TH MAR.	BEN THOMPSON
16TH APR.	STEVE LAYNE
21ST MAY.	ROOT'N TOOT'N
18TH JUN.	DARREN JONES
16TH JUL.	TENNESSEE COUNTRY DUO
20TH AUG.	DAVE WILSON
17TH SEPT.	CHRIS HARRIS
15TH OCT.	KY RIVERS
19TH NOV.	STEVE HANKS
17TH DEC.	MARTIN JAYE

**CHECK OUT OUR C&W NOTICE BOARD FOR  
MORE INFO !**

**Guests £5 Members Free**

**01264 352098**

**enhamclubltd@hotmail.co.uk**

## Introduction To Mindfulness For Work & Living

Do you feel like you are always on Fast Forward? **Overloaded?**  
**Overwhelmed** by the demands of family, work & other duties?  
**Stressed out** day to day?

In the class you will:

- **Experience mindfulness**
- Understand **how to reduce stress**,
- Learn **simple techniques to feel calmer and more in control.**

- Leave feeling **relaxed, & calm**
- Practice can **Increase Focus, Resilience & Enhance Sleep**

**Saturday 30th April 2016,**  
**10:00 - 13:00**

The White Hart, Bridge Street,  
Andover, SP10 1BH, in The Oak Room

Invest In Yourself  
3 Hours,  
Only £20

**BOOST**Therapy

To secure your place call Kirsty on 07841 413 134  
or email [info@BoostTherapy.co.uk](mailto:info@BoostTherapy.co.uk)

Booking is Essential. Limited Places Available. Payment required at time of booking



**THE OAK SMANNELL**

**Quiz Nights** on 6th, 20th and 4th May

**LIVE MUSIC**

**1st May & 29th May** Bank Holiday Sunday Music from 7pm, Open until 9pm

**FUNDRAISING**

Please support Tom and Anna who are doing a **skydive** on the 24th April to raise money for the **Hampshire and IOW Air Ambulance** you can sponsor them using the sponsor forms at The Oak or visiting our JustGiving pages at:

<http://www.justgiving.com/TomGoss>  
<https://www.justgiving.com/Anna-White18>

Tues-Fri 12pm-3pm & 6pm-11pm, Sat 12pm-11pm  
Sun 12pm-6pm, Mon CLOSED



[www.theoaksmannell.com](http://www.theoaksmannell.com)



01264 363075



[theoaksmannell](https://www.facebook.com/theoaksmannell)



[@TheOakSmannell](https://twitter.com/TheOakSmannell)



[theoak@email.com](mailto:theoak@email.com)



## How to contact your Member of Parliament



### Kit Malthouse



[kit.malthouse.mp@parliament.uk](mailto:kit.malthouse.mp@parliament.uk)



01264 401401



Or write to me at my Constituency

Office:

2 Church Close, Andover, SP10 1DP

*I hold regular surgeries for all constituents in North West Hampshire*

## Your Local Test Valley Borough Councillors

*If you have any ideas, issues, problems or concerns that you wish to raise, then please feel free to contact us, using the details below.*

### **Alex, Phil & Tracey**



**Cllr Alex Brook**

[cllrabrook@testvalley.org.uk](mailto:cllrabrook@testvalley.org.uk)

07801 936474



**Cllr Phil North**

[cllrpnorth@testvalley.org.uk](mailto:cllrpnorth@testvalley.org.uk)

07732 423023

[www.cllrphilnorth.co.uk](http://www.cllrphilnorth.co.uk)

[www.facebook.com/cllrphilnorth](http://www.facebook.com/cllrphilnorth)



**Cllr Tracey Preston**

[cllrtpreston@testvalley.org.uk](mailto:cllrtpreston@testvalley.org.uk)

07775 927161

# **Billys Luxury PRIVATE HIRE**

7-SEATER MULTI-PURPOSE VEHICLE  
HELPFUL FRIENDLY SERVICE  
FOR AIRPORTS \* OUTINGS \* NEAR OR FAR  
UK AND ALL EU COUNTRIES

**FOR ENQUIRIES & BOOKINGS, TELEPHONE  
01264 324655**

## **PERSONAL TRAINING FOR EVERYONE**

**Gained weight? Feeling tired? Hate gyms? Health problems?  
You need my help**

Mature, affordable Personal Trainer based in Little London. Offering achievable results using fitness and health techniques you will enjoy in a private space dedicated to you.

Fitter means healthier and need not be expensive or scary.  
Let me help take you from *fat* to *fit* in time for summer!

Train with me in a private space dedicated to achieving fitness and health using techniques you will enjoy.

**Prices start from as low as £20 per hour**

**Boot camps from £30 for 4 people**

If you don't try you will never know!  
Call for a free consultation and make a decision to make your future a healthy one.

**Serle Clark 07448 317 406 - based in Little London**



**Sarsen Energy**

Wood burning Stoves  
Kitchen Ranges  
Biomass Boilers  
Full design and installation service

Please visit our wood burning centre to view our extensive range of wood fuelled appliances

APPROVED INSTALLER



**RECC** ✓  
RENEWABLE ENERGY CONSUMER CODE

**01264 850 742**



Unit 1, Garlands Trading Estate,  
Cadley Road, Collingbourne Ducis, Marlborough, Wiltshire SN8 3EB  
email: [info@sarsenenergy.co.uk](mailto:info@sarsenenergy.co.uk) [www.SarsenEnergy.co.uk](http://www.SarsenEnergy.co.uk)



**Rob's Garden Services**  
**01264 332810**  
**07783 083122**  
**[rob garden1966@gmail.com](mailto:rob garden1966@gmail.com)**

*Summer Dining:*  
*at*  
*Esseborne Manor*

Lunch with a Glass of Wine  
- from £15

Sunday Lunch Buffet - £25

Full Afternoon Tea -  
Cakes, Scones, Sandwiches & Tea  
- £15

Grill or Dinner Menus - from £30

7-Course Tasting Dinner - £55

Monthly Ladies Lunch Club  
with speaker £26

# **brown** Skips .com

## Your Local Skip Hire Company

BOOK ON YOUR SMART PHONE OR ONLINE FOR:

- ✓ Quick and easy 24/7 online reservation
- ✓ Our lowest rates
- ✓ Secure payment powered by WorldPay
- ✓ Next day delivery and excellent service
- ✓ Skips from 4 to 40 yard available
- ✓ Local authority skip licenses



### We recycle more...

A303 Materials Recovery Facility, Barton Stacey, SO21 3QS

 **01264 720 257**

\* Offer available until 30<sup>th</sup> June 2016 online only using our brownskips.com website. Standard terms & conditions apply.

**SMANNELL PARISH**  
**OFFER**

**£5<sup>+VAT</sup> OFF**  
**SKIP HIRE\***

**OFFER CODE: SMANNELL**

# ARBORICULTURE Specialist



- All aspects of tree work
- Stump Grinding
- 24 Hour Emergency Call Out
- Logs For Sale  
(seasoned hardwood)
- Top-Soil For Sale
- Digger/Operator Hire (good rates)
- Fencing  
(domestic & commercial)



01264 735609  
07824 178242

[tree.styler@hotmail.co.uk](mailto:tree.styler@hotmail.co.uk)



## HARMSWORTH'S

Andover's Premier Supplier Of "Preloved" Furniture

"NEW SHOWROOM IN ENHAM ALAMEIN"

Check Out Our New Website

[www.usedathome.co.uk](http://www.usedathome.co.uk)

Tables, Chairs, Sofas, Single Chairs, Chest of Drawers,  
Bedside Chests, Wardrobes, Display Cabinets, Beds,

Enough To Furnish A Whole House!



We have been dealing in preloved/slightly used furniture for nearly 3 years and have built up a solid and dependable service. Viewing is easy and by appointment. House Clearances also undertaken at a very reasonable rate.

Please contact: Miles Harmsworth on 07594 800998

# Roland Security

Established in 1979.

We are an established firm of honest, reliable and professional locksmiths and security engineers with retail premises in Andover.

Contact or call in for free advice and a sensible price on any of the following:

- Locks and Keys
- UPVC Window and Door Locks and Spares
- Safes
- Intruder Alarms
- CCTV
- Access Control
- Automated Gates, Barriers and Garage Doors

Telephone:                    01264 357476

E-mail us at:                [enquiries@rolandsecurity.co.uk](mailto:enquiries@rolandsecurity.co.uk)

Or visit us at                Unit 6 Mylen Business Centre,  
Beckett Road,  
Andover SP10 3HR.

Free parking on site