

# PARISH OAK



AUGUST 2016

# Parish Oak Activity Calendar

## August 2016

Sun	Mon	Tues	Wed	Thurs	Fri	Sat
	1 <sup>st</sup>	2 <sup>nd</sup>	3 <sup>rd</sup>	4 <sup>th</sup>	5 <sup>th</sup>	6 <sup>th</sup>
		<b>3 - 4pm</b> <b>Enham Trust:</b> <b>Church Choices</b> <b>group</b>				
7 <sup>th</sup>	8 <sup>th</sup>	9 <sup>th</sup>	10 <sup>th</sup>	11 <sup>th</sup>	12 <sup>th</sup>	13 <sup>th</sup>
<b>10am</b> <b>St George's:</b> <b>Communion</b>	<b>7.30pm</b> <b>Rectory:</b> <b>Messy Church</b> <b>Planning meeting</b>	<b>3 - 4pm</b> <b>Enham Trust:</b> <b>Church Choices</b> <b>group</b>	<b>The Oak,</b> <b>Smannell:</b> <b>Quiz Night</b>			
14 <sup>th</sup>	15 <sup>th</sup>	16 <sup>th</sup>	17 <sup>th</sup>	18 <sup>th</sup>	19 <sup>th</sup>	20 <sup>th</sup>
<b>10am</b> <b>Christ Church,</b> <b>Smannell:</b> <b>Communion</b> <b>6.00pm</b> <b>Elizabeth House,</b> <b>Enham:</b> <b>CANCELLED</b>						<b>Enham</b> <b>Country &amp;</b> <b>Western Club:</b> <b>Dave Wilson</b>
21 <sup>st</sup>	22 <sup>nd</sup>	23 <sup>rd</sup>	24 <sup>th</sup>	25 <sup>th</sup>	26 <sup>th</sup>	27 <sup>th</sup>
<b>10am</b> <b>St George's:</b> <b>Communion</b>			<b>The Oak,</b> <b>Smannell:</b> <b>Quiz Night</b>			
28 <sup>th</sup>	29 <sup>th</sup>	30 <sup>th</sup>	31 <sup>st</sup>			
<b>10am</b> <b>Christ Church:</b> <b>Matins</b> <b>6 - 10pm</b> <b>The Oak,</b> <b>Smannell:</b> <b>Hog Roast &amp;</b> <b>Live Music</b>						

# USEFUL TELEPHONE NUMBERS

## The Church

Parish Priest	Rev. Val Gagen	748065
Pastrow team Priest-in-charge	Rev. Alex Randle-Bissell	512161
Churchwarden - Smannell	Irene Wilson	359950
Churchwarden - Enham	Emma Kinchenton	0783 7736681
PCC Treasurer	Noel Pope	352968
PCC Secretary	Margaret Smith	357487
Gift Aid Secretary	Rod Bowker	357201
Parish Magazine Editor	Peter Calcraft	512262

## Local Services

Smannell & Enham (CE) School	323201
Enham Club, Landale Wilson Hall	352098
Enham Parish Council	Chairman: Leslie Francis 335678
Smannell Parish Council	Chairman: Rod Bowker 357201
Test Valley Borough Council	368000
Enham Service Station	352651
Enham Shop and Post Office	335678
Enham Trust	345800
Andover Leisure Centre	323355
The Oak (Public House)	363075

## Emergencies

Hospitals Andover Memorial	358811
Royal Hampshire County	01962 863535
NHS Direct	0845 4647
Neighbourhood Watch	Richard Budge (Smannell) 351129
	Meg Chant (Little London) 355167
	Tim & Leslie (Enham) 335678
<b>Police</b>	<b>999 or 101 or 0845 045 45 45</b>
RSPCA	08705 555 999
Samaritans	0845 7909 090
Social Services - Andover	387400

## Utilities

Southern Water	0330 3030368
Southern Electric - Emergencies	0800 0727282
British Gas - Emergencies	0800 111 999

# MERIT<sup>re</sup> SPECIALISTS



TYRES ▼ EXHAUSTS ▼ BATTERIES ▼ BRAKES ▼ AIR CONDITIONING  
4 WHEEL ALIGNMENT ▼ MOTORCYCLE TYRES ▼ PUNCTURE REPAIRS

## CALL NOW ON: 01264 333044

WE HOLD OVER 30,000 LEADING BRAND TYRES IN STOCK IN ANDOVER



**BRIDGESTONE**  
*Your Journey, Our Passion*

**Continental**  
*The Future in Motion*

**GOODYEAR**

**DUNLOP**

**AVON**  
TYRES

**PIRELLI**

**COOPER**

**Firestone**

PLUS A FULL RANGE OF ECONOMY TYRES  
AT **EXTREMELY** COMPETITIVE PRICES

**VISIT**

**[www.merityre.co.uk](http://www.merityre.co.uk)**

TO FIND YOUR NEAREST  
CENTRE OR TO  
**BUY TYRES ONLINE!**

33A WEST WAY,  
WALWORTH BUSINESS  
PARK, ANDOVER  
HAMPSHIRE, SP10 5JG

Open 7 days a week. All major  
credit cards accepted. Fleet  
and company cars welcome.



## **EDITORIAL**

### **Bob's Disease**

Bob is a good friend of mine, a person I have known for well over 40 years. He lives in Buckinghamshire and is a true countryman, keeping sheep, chickens and bees on his smallholding in the Chiltern Hills. We meet fairly regularly during the year, and, as one does, the first question asked is "How are you then, Bob?" His recent reply was "Not so good, I have this problem with my brain and heart." Initial concern is soon dispelled by the twinkle in his eye, and he goes on to explain how, when attending a recent livestock market, he was offered a new batch of ewes. His brain said NO, I don't need any more animals or work, his heart said the opposite. Invariably with Bob the heart wins, and sure enough he returned home with a few more sheep to supplement his flock. The same has happened with the chickens he keeps and the number of beehives he looks after.

I was faced with a similar dilemma some years ago. An American friend was appointed to command one of the last American battleships, the USS Wisconsin. A telegram was received from the US Department of Defence inviting me to the commissioning ceremony. In those days a trip to the USA was big news and with a young family and a job to do, I let the opportunity slip. The heart wanted to go, but the brain said it was not viable. However it is something that I have regretted ever since, not least because my wife's cousin went, and enjoyed a 2 day cruise on the battleship along the east coast of the USA.

Writing this on the eve of the EU Referendum it occurs to me that many of us are likely to be faced with a similar "disease" when considering how to cast our vote. I suspect that the brain will say that the risks of leaving the EU are simply not worth it, the unknown more dangerous than the possible disadvantages of remaining. On the other hand the heart may yearn to be free of the bureaucracy of the system and to once again have the country in control of its own destiny.

By the time this edition of the Parish Oak is published the referendum will be a month behind us and we will be heartily glad that all the campaigning is over. History alone will prove whether the right decisions were made, and who reigned supreme – the BRAIN or the HEART.

***Noel Pope***



## **CHURCH IN SMANNELL & ENHAM**



### **Ramblings from the Rectory ...**

August is perhaps a time for relaxing a little more ... unless you are a farmer, of course and then it's all systems go until the crops are in. But perhaps August could be a time for more reflection, if we are less busy and not having quite so many meetings maybe, while some folks are away on holiday.

I have been trying to find time for a regular Quiet Day in order to reflect more and last month I attended my second day at St Columba's Retreat House in Woking. There is a series of Quiet Days about every 2 to 3 months planned throughout the year. This one was about praying with the labyrinth.

I found out that labyrinths have been about for around 4000 years and the oldest rock carving of one can be found in Sardinia. There are various designs and the oldest European version of the 7-circuit classical design can be seen in Crete. But the thing about labyrinths is that there is only one pathway to follow and there are no choices to make on the pathway like a maze, so you cannot get lost following one.

I have been using the labyrinth for prayer for some while and so this idea was not new to me. Some of you may know that I have a carpet with a labyrinth design in my lounge. It is the same design as can be found in the cathedral in Chartres in France, with eleven circuits. Philip and I visited this cathedral a few years ago and I was able to walk the labyrinth path there. The design is embedded into the floor stones of the nave, and I was told that sometimes it is covered in chairs. But we were blessed and visited on a day when there was space to walk the path.

Apparently, people in medieval times walked labyrinths because they were unable to go on a pilgrimage. They would sometimes do this on their knees as a penance for something they felt they had done wrong. It is similar to the reasons people may go on a pilgrimage - sometimes it can be to ask God

for forgiveness or sometimes to thank God for something. Or it can be a way of trying to re-connect with God if you felt that life was getting too busy, for example.

There is a wooden board you can buy with the pattern of the Chartres labyrinth imprinted on it. You can use this with the index finger of your less-dominant hand. If you do this with your eyes closed it seems to have more impact. Perhaps because you cannot see the way ahead, it reminds you of the journey through life with some long sweeping stretches where things seem to be going swimmingly and then there are sudden twists and turns to the journey when things are maybe not so good. But we know that God is with us on the pathway leading us to the eternal home.

If you want to know more about praying with labyrinths, do ask and I have books you could borrow too if you are interested.

Don't forget that this month we have our planning meeting for Messy Church, due to start in September in both of our schools at Smannell and at Hatherden. If any of you are interested in helping with Messy Church do come to the Rectory on Monday evening 8<sup>th</sup> August at 7.30pm so that we can plan together the first session for September, and I would ask you all please to hold this project in your prayers. Thank you.

Have a good August and hopefully you may have some time to relax and reflect a little.

God bless,

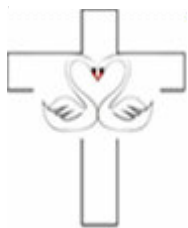
Val

**Rev. Val Gagen**  
**01264 748065**

**Submission Deadline  
for the August Parish Oak issue:**

**Friday 19th August, 2016**

**Contact: [editor@parishoak.co.uk](mailto:editor@parishoak.co.uk)/Tel: 01264 512262**



*To love, to learn, to live ... to leave a legacy*

## **SMANNELL & ENHAM CHURCH OF ENGLAND PRIMARY SCHOOL**

In the school's last contribution to the Parish Oak I left you wondering, along with us, just how far a balloon could travel!

To start our Europe Week we had a grand balloon launch to see if balloons could reach the continent. The very simple answer is that balloons can reach continental Europe. After our soggy Monday lunchtime launch we were really pleased to hear on Tuesday morning that one had been found near Antwerp in Belgium. Later the same day we heard that one had made it over the border into the Netherlands, apparently travelling just over 300 miles! What was particularly heart-warming was the fact that families in these countries took the time to send photos and engage with us. Wouldn't it have been lovely for a Dutch child to have taken that balloon label to their school to share and then realised it had our web address on it which meant they were able to look at how we were leaning all about Europe.

At this time of year, we realise just how much of our school life is like a journey as we pass several landmarks. Sports Day has just been finished, the rain held off long enough for all children to complete their races. It was only the races we had planned for parents that had to be left off the schedule!

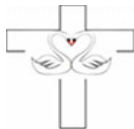
Soon we'll be gathering together at Christ Church for our annual leavers' service as we wish our Year 6 children well. This year 18 children will be leaving us and making their way to a number of different secondary schools. Many have spent their entire primary school career with us and have really grown up in their time here. They leave us as confident young adults who display the values we have tried to instil in them.

Also leaving us this year is our long-serving caretaker, Mrs Linda Waite. Linda joined the school 32 years ago in October 1984. We wish her the very best in her retirement.

Hopefully the sun will shine for us at some point before I write my autumn contribution.

***Peter Shaw***  
***Head Teacher***

## The Smannell and Enham Church of England (Aided) Primary School



*To love, to learn, to live ... to leave a legacy*

**The Smannell and Enham Church of England (Aided) Primary School** is currently in need of new Foundation Governors.

Governors are one of the largest volunteer forces in the country and have an important part to play in raising school standards. The role of the governing body is absolutely key to the effectiveness of a school. Ofsted (the national inspection body for schools) has noted that the most effective schools demonstrate effective leadership and management, and that includes the leadership brought by the governing body.



Our school Governing Body is made up of people who come to us through a variety of routes and with a range of different backgrounds, skill and experiences, but they are all volunteers who work together for the benefit of the School and are the link between the School and the community it serves.

The role of the Governing Body is a strategic one and its key functions are to set the aims and objectives for the school; set the policies and targets for achievement; monitor and evaluate the progress the school is making, all this while being a source of challenge and support to the headteacher (a critical friend).

This isn't an application to be taken lightly, as it involves time, energy and a willingness to become involved in the life of the school on a regular basis over at least four years. However, it is very rewarding, as together we can strategically input into the school and see another generation of children growing in knowledge and development within our community. A Foundation Governor represents the Church of England and should be a regular communicant within the Church.

We would be delighted to hear from anyone who has an interest in the performance of the school, but also a willingness to listen and help us make informed decisions to develop the school forward.

**Contact Peter Calcraft on 01264 512262 ([editor@parishoak.co.uk](mailto:editor@parishoak.co.uk)) or Amanda Cox ([cox\\_54@hotmail.co.uk](mailto:cox_54@hotmail.co.uk)) to discuss how you can be involved.**

## **REPORT ON PCC MEETING HELD ON 21st JUNE 2016 AT CAMBER HOUSE AT 6 P.M.**

With the exception of Barry Boothman, who sent his apologies, all members were present. After opening the meeting, Rev. Alex invited Rev. Val to take the chair both for this and all subsequent meetings. The Minutes of the meeting held on 2<sup>nd</sup> February 2016 were confirmed and signed as correct by the Chairman. Noel reported that discussions about the Benefice website were ongoing, as was the search for a new Foundation Governor at the School. The Summer BBQ at Finkley House on 17<sup>th</sup> June had been a great success, raising well over £1,000 with 117 people attending a most enjoyable evening. Thanks were expressed to all those who had helped organize the event. A Pet Service would be held in the school playground on Sunday, 31<sup>st</sup> July at 10 a.m. with refreshments afterwards at Christ Church, and a Social Afternoon would be held at The Rectory on Saturday, 17<sup>th</sup> September from 3-5 p.m. "Messy Church" was being organized for 13<sup>th</sup> September at the School - a planning meeting for this event would be held at the Rectory on Monday, 8<sup>th</sup> August at 7.30 p.m. – all welcome. Various ideas for future events were discussed. Laminated copies of all services would be given to each church. The servicing of the organ at Christ Church would continue to be carried out annually, and enquiries would be made about servicing the organ at St. George's. Problems with the grass cutting and cleaning of Christ Church had been rectified. Emma would explore having more items in the church for little children.

The Parish finances remained in good shape. Margaret Smith would act as a Cheque Signatory in place of Mrs. Bowker; it was hoped that internet banking would be able to be set up at a later date and that the Benefice Administrator would be 'on seat' in September.

The Bishop of Basingstoke would lead a sponsored walk from Smannell to Hatherden to celebrate the 160<sup>th</sup> Anniversary of the consecration of Hatherden & Smannell Churches. Responses to The Big Ask had been summarized and Rev. Alex outlined his plans and hopes for the future of the Benefice. Deanery Synod representative, Elizabeth, reported that entertainment by the local Churches for the celebration of the Queen's 90<sup>th</sup> birthday had been well attended. Plans for staffing the Augusta Park area had met with difficulties. A venue was needed for the Synod Meeting on 2<sup>nd</sup> November and Rev. Alex promised to offer one of the Benefice's churches. After a correction the Burial Policy was adopted. It was agreed that enquiries would be made about providing a wrought-iron handrail to be erected on the slope in the centre of the churchyard. An insurance inspection was due to be carried out in August.

The Craft Group would meet on Wednesday, 27<sup>th</sup> July at 2-4 p.m. at the Rectory.

***Margaret Smith,  
Secretary to the PCC, Smannell with Enham Alamein***

## **Smannell Parish Council**

### **DEFIBRILLATOR TRAINING**

Smannell Parish Council is organising a training course at Augusta Park Community Centre on heart resuscitation including the use of a defibrillator. The course date has not yet been fixed.

Anyone in the parish who would like to join the course please contact the Parish Clerk, Tel: 01489 795583 or at [smannellpc@gmail.com](mailto:smannellpc@gmail.com).

### **Smannell Road Footway**

We have been informed that the building of a footway along Smannell Road from Augusta Park to the village is likely to suffer from further postponement from the previously planned date of late summer. Hants County Council are reviewing the plans and could make some cost-cutting changes. I pointed out how dangerous the southern section of the road is round the bends after leaving Augusta Park and that this section should be priority work.

***Rod Bowker***

***Chairman, Smannell Parish Council***

## **Enham Alamein Parish Council**

There is no Parish Council meeting in August but the council will meet again on 14th September.

Hope to see you then.

***Leslie Francis***

***Chairman, Enham and Alamein Parish Council***

# THE ENHAM SHOP & POST OFFICE

## Shop Services

- No Queues & **Free** Parking Outside
- **Handmade Goods with Local Produce:**  
Pies, Quiches, Pate & Cakes
- Lamb, Beef, Pork & Free Range Eggs Supplied Locally
- **Fresh Baked Goods:**  
Bread, Pastries, Sandwiches, Rolls & Savouries
- Dry Cleaning, Laundry, Repairs & Alterations
- Newspapers & Magazines



## Post Office Services

- Euros & Travel Insurance
- Parcel Service 7 days a week
- Gas, Electric, & Mobile Top Up
- Email & Photocopy Services

Hot Food & Drink  
Fish & Chips  
on Friday



### **Opening Times:**

**Mon - Fri** 7.00am to 7.00pm | **Sat** 7.30am to 5.30pm | **Sun** 8.00am - 4.00pm

# 01264 335 678

17 Newbury Rd, Enham Alamein  
Andover, Hampshire SP11 6HH  
[www.enhamvillagestores.co.uk](http://www.enhamvillagestores.co.uk)  
Facebook: [www.facebook.com/enhamstores](http://www.facebook.com/enhamstores)

## We Provide More Than Just Customer Service!



Peta Wilkinson CEO

01264 345800

Hello Everyone,

The months seem to be flying by! So hard to believe it's August already, the very height of summer; a time for family holidays and days out to the beach. Perfect for some wonderful events we have hosted, and are preparing to host.

Last month, we were delighted to launch officially The Art Project from Enham Trust. Welcoming all 250 pupils, teachers, and some parents from Roman Way School, who each created a beautiful work of art for the project, the event was a great success, giving all who attended the opportunity to learn more about the project, see some of the artwork currently on display, and create their own masterpieces on the day.

Also in July we launched our step-changing new respite service, the Cedar Park Apartments, during an exclusive event at Enham Trust. Now available for respite care, short breaks, and rehabilitation stays, the Cedar Park Apartments fill a gap in the current services provided to disabled people particularly within Hampshire.

Looking ahead, our fundraising team have a number of interesting challenge events coming up: the Andover Trail Marathon on 4<sup>th</sup> September, and the London-to-Brighton Cycle Ride on 11<sup>th</sup> September. If you or anyone you know is interested in taking part in either of these challenges, and raising funds for our vital cause, please get in touch.

Cedar Park development has been highly commended in the recent Housing Design Awards, selected from over 96 shortlisted schemes. During August and September the builder will put in place new passing spaces in Maccallum road. The demolition is now complete and work has started on infrastructure.

And finally, my congratulations go to Jenny, a Skills2Achieve customer in Portsmouth, who has been supported to gain qualifications she needed in Maths & English to progress onto mainstream college, starting an IT course in September.

More information can be found on our website: [www.enhamtrust.org.uk](http://www.enhamtrust.org.uk)

Best wishes,

**Peta Wilkinson, CEO**

Cancer Research UK Fund-Raising

On 13th July, Ellie and Megan who are friends and residents of Blythe Close in Enham and who are also year 5 pupils at local schools, held a cake sale to raise money for Cancer Research UK. Thank you to all those who visited their stand and donated so generously. A very successful £52.31 was raised during a busy hour and the cakes sold out!

Well done, girls, for your drive and enthusiasm to raise money for charity!



Population Census on 26<sup>th</sup> June 2016

ICELAND	
Population	334,319
Women	-170,503
Men under 18	-40,121
Men over 35	-85,670
Obese	-24,775
Busy with whalehunting	-788
Volcano scouts	-320
Sheepshearers (high season!)	-2,856
Imprisoned bankers and financiers	-23
Physical disability & visual impairment	-454
Icelandic fans in France	-8,781
Medic, chef and masseuse at match	-3
Coach	-2
Remaining to play	23

Join the Parish Oak on Facebook at [www.facebook.com/parishoak/](https://www.facebook.com/parishoak/)



Be instantly connected to the latest news from your local community through the Facebook page. Provide us with your feedback and enjoy images - past and present - of the local area.

## Parish Oak Advertising Rates

**The Parish Oak is a monthly magazine that has an excellent avid readership and covers all households in Smannell, Little London, Enham Alamein, Finkley and Upper Enham.**

**Full page (12 issues per year)      £ 140**  
**Half page      £ 90**

**One off insertions, or leaflet distribution by negotiation.  
 A5, black and white. 450 homes distribution.**

**Contact Noel Pope by email at [advertising@parishoak.co.uk](mailto:advertising@parishoak.co.uk) or speak with Peter Calcraft on 01264 512262 for further information.**

**Andover's only Independent  
Family Funeral Directors  
and Memorial Consultants**

**S. & J. MADDOCKS**

*offer an experienced, personal and  
friendly 24-hour service*

*Local people serving local families  
for over 20 years*

S. & J. Maddocks is a family owned, independent funeral directors.

We are proud to offer an experienced, friendly and personal service combined with attention to detail.

Our aim is for the funeral to be a fitting and fulfilling farewell to someone who is loved, and we have the experience and knowledge to enable you to express your and their individuality.

We offer a 24 hour service and we are always available on the telephone outside office hours and will be happy to discuss your needs, including newspaper announcements, floristry and service stationery. Arrangements can be made at our office or in your own home, but always with the emphasis on a personal and friendly service.

We are also proud to offer pre-paid funeral plans and a monumental masonry service.

If you have any queries, please feel free to call for no obligation advice and guidance.

**Chapel of Rest • Free Parking  
Funeral Plans**

STATION APPROACH  
ANDOVER SP10 3HN

Tel: 01264 355600

[www.sjmaddocks.co.uk](http://www.sjmaddocks.co.uk)



Golden Charter  
Funeral Plans

# AIRPORT TRAVEL

**We are never beaten on  
service and will match  
any like for like price !**

**Book us to drive you to -**

**AIRPORTS  
SEAPORTS  
EVENTS  
SHOPPING  
BUSINESS  
WEDDINGS  
And more**

**Call the award winning  
'Let Me Drive YOU'  
now for best rates .**

**01264 363789 - office**

**0775 9646479 - direct**

[WWW.LETME DRIVEYOUPRIVATEHIRE.CO.UK](http://WWW.LETME DRIVEYOUPRIVATEHIRE.CO.UK)

**DISCREET- TRUSTED - RELIABLE**

**Just ask our clients !**

# Andover Film Club

for moving pictures

Do you enjoy great films and live near Andover? We show on the 2nd Monday of the month and in the comfort of the local ODEON cinema.

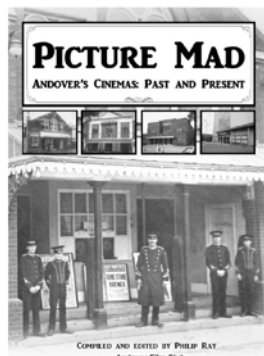
Recently we've screened *Room*, *Grandma*, *Taxi Tehran*, *Carol*, *Gemma Boverly* and *Au revoir les enfants*

Non-members welcome. Admission £6.50

Find out more from:

[www.andoverfilmclub.org](http://www.andoverfilmclub.org) [info@andoverfilmclub.org](mailto:info@andoverfilmclub.org)

**Out now: PICTURE MAD**, our book on the history of Andover's cinemas. Available to buy at Andover Museum or [amazon.co.uk](http://amazon.co.uk). The Savoy, the Rex, the Odeon and more.



**NB FURNISHINGS**

[www.nbfurnishings.co.uk](http://www.nbfurnishings.co.uk)

Upholstery & Recovers  
Fine Fabrics & Trimmings  
Wallpaper & Paint  
Curtains and Blinds (mtm)  
Voiles and Nets (mtm)



**Neil Busby**  
*Antiques & Fine Furniture*

Full restoration service  
French Polishing  
Cabinet repairs  
Veneer work  
Pianos

Made to order bookcase



[www.neilbusby.co.uk](http://www.neilbusby.co.uk)

Harewood Farm, Andover Down. Hampshire SP11 6LJ  
Tel : 01264 333375 or 07803 922405

## **Neighbourhood Watch**

### **HMRC**

Action Fraud has issued the following warning on behalf of Hampshire Constabulary.

Please be aware that residents in Hampshire have been contacted by scam callers claiming to be from HM Revenue and Customs and demanding money. The victims receive phone calls from a person claiming to be from HMRC and told they will be arrested if they do not settle their unpaid tax bill.

The message sounds serious and intimidating and asks the resident to press a number to find out further details. DO NOT press any numbers as the cost for the call is unknown.

If you have elderly relatives, friends or neighbours please make them aware of this scam and remind them not to give any details to unexpected callers.

HMRC will never make contact this way.

### **HOLIDAY BOOKINGS**

Action Fraud are warning that fraudsters are luring potential customers with low prices and "one-time offers" that are simply too good to pass up., requesting payment by the preferred method of bank transfer.

Avoid paying for a holiday/airline ticket/accommodation via direct bank transfer. No reputable company will ever request payment via this method. Whenever possible, pay for your holiday by credit card as it offers increased protection.

Always remember to look for the "https" and locked padlock icon in the address bar before entering you payment details.

Never feel pressured to make a booking for fear that you will miss out on this "low price" opportunity. If you have never used the company before, take your time to do some online research to ensure they are reputable.

### **NOTE**

If you have ever been affected by these or any other scam, report it to Action Fraud by calling 0300 123 2040.

***Richard Budge***  
***Neighbourhood Watch Co-ordinator***

## Who is Anna White?

### **Tell us a little bit about you, and what fills your day?**

I live with my husband, Charlie White, at Frenches Farm, Little London. We have a very busy working farm caring for all our animals and looking after our land.

I love cooking and have a real passion for homemade products of which I now make lemon and lime cordials and sell to our local farm shops and village shops.



### **What keeps you motivated?**

I have recently become a grandmother to a beautiful little girl called Beau. It is just wonderful and Charlie is a fantastic grandfather. We are very lucky as all our children visit us a lot and we love having them all to stay and hearing all their news.

I am a hard worker. Having trained as a nurse, I now run my own catering company, and I brought up two children on my own, I now love walking the fields first thing in the morning, checking all our animals and helping on the farm. Frenches Farm is the most beautiful, peaceful and tranquil place to live.

I have introduced our beef, homemade products and quail eggs to local village shops and farm shops. All have been very popular, of which I am very pleased.

### **What are you most proud of?**

I am so proud of my family. Between Charlie and me, we have five children. They are all very special, very hard workers, and have made Charlie and me so very proud.

I am also proud of the amount of money that I have raised for The Hampshire and Isle of Wight Air Ambulance. This is the most fabulous charity, and desperately needed in every way. I have now raised over £16,000 with the help of many supporters. I am soon to be walking The Three Peaks in 24 Hours to raise more funds.

### **What would be the single thing you would like to do differently or see change?**

Since working on the farm and often driving the tractors in the local area, I would like to see a bit more patience from drivers on the road and for their speed to slow down. I am so shocked by the way drivers refuse to reverse, try and overtake on country lanes, swear and make rude gestures. It is shocking the way they behave.

### **What makes you tick?**

Waking up every morning and looking forward to a new day on such a beautiful farm with all our animals and the work ahead of us throughout the day.

### **What three words would your friends use to describe you?**

Hard worker, loyal, determined.

### **Any words of wisdom you would like to share?**

Having gone through very tough times in my life, and even in some dark days, my determination won through. Always look forward, never look back, and live each day to the full.

## **Notices**

### **Parish Hog Roast**

A big thank you to all who helped with our Parish Hog Roast in June and especially to our hosts Bregje and Michael Dawson for the use of their lovely garden.

Our next social event will be a 'bring and share' afternoon tea at the Rectory in Enham, on Saturday 17th September from 3-5pm.

Please put this date in your diaries now and come and find out who everyone is.

I'm sure there are people in our Parish who you haven't spoken to before so here's your chance to come and get to know everyone!

### **August Enham Trust service**

The August Enham Trust service is cancelled on the 14th at 6pm.

Next Enham Trust service is on the 2nd Sunday of September (Sunday 11<sup>th</sup> September) at Michael House at 6pm. All welcome.

### **Church Choices**

The Church Choices group will still run on Tuesday 2nd and Tuesday 9th August from 3 to 4pm at the Enham Trust. All welcome.

Come to the Choices building for singing, chat and prayer.

We will be closed for holidays on 16th, 23rd and 30th August. Re-opening in September. Please read your September magazine to find out when!

## SERVICES IN SMANNELL WITH ENHAM ALAMEIN PARISH *August 2016*

### ***Sunday 7<sup>th</sup> August***

*10.00 a.m. St George's, Enham*

### ***TRINITY 11***

*Holy Communion*

### ***Sunday 14<sup>th</sup> August***

*10.00 a.m. Christ Church, Smannell*

*6.00 p.m. Elizabeth House, Enham*

### ***TRINITY 12***

*Holy Communion*

***Cancelled***

### ***Sunday 21<sup>st</sup> August***

*10.00 a.m. St George's, Enham*

### ***TRINITY 13***

*Holy Communion*

### ***Sunday 28<sup>th</sup> August***

*10.00 a.m. Christ Church, Smannell*

### ***TRINITY 14***

*Matins*

### ***Sunday 4<sup>th</sup> September***

*10.00 a.m. St George's, Enham*

### ***TRINITY 15***

*Holy Communion*

**Enquiries for Baptisms, Weddings or Funerals in the Parish to the Priest in Charge, Rev. Val Gagen, on 01264 748065 or the Church Wardens.**

## PARISH REGISTER

### **Baptisms**

Sophia Florence Seabrooke on 10<sup>th</sup> July 2016 at Christ Church, Smannell.

*We welcome you into the Lord's family*

*We are members together of the same heavenly Father*

### **Funeral**

Andrew George John Knowles on Wednesday 29<sup>th</sup> June 2016.

Funeral and interment at Christ Church, Smannell.

# Roland Security

**Established in 1979.**

**We are an established firm of honest, reliable and professional locksmiths and security engineers with retail premises in Andover.**

**Contact or call in for free advice and a sensible price on any of the following:**

- **Locks and Keys**
- **UPVC Window and Door Locks and Spares**
- **Safes**
- **Intruder Alarms**
- **CCTV**
- **Access Control**
- **Automated Gates, Barriers and Garage Doors**

**Telephone:                   01264 357476**

**E-mail us at:               [enquiries@rolandsecurity.co.uk](mailto:enquiries@rolandsecurity.co.uk)**

**Or visit us at               Unit 6 Mylen Business Centre,  
Beckett Road,  
Andover SP10 3HR.**

**Free parking on site**



# PHIL COX DECORATIONS

## Your local decorator



- PRIVATE/RESIDENTIAL
- INTERIOR/EXTERIOR
- FULLY INSURED/ALL WORK GUARANTEED
- ALL WITH A FRIENDLY AND PROFESSIONAL SERVICE

REFERENCES AVAILABLE UPON REQUEST: **07795385379**

IF YOU ARE INTERESTED PLEASE CONTACT ME IN THE FOLLOWING WAYS:

LETTER: **20 ALAMEIN ROAD, ENHAM ALAMEIN SP11 6HR**

EMAIL: **philwcox@hotmail.co.uk**

HOME PHONE: **01264357579**

## **Billys Luxury PRIVATE HIRE**

7-SEATER MULTI-PURPOSE VEHICLE  
HELPFUL FRIENDLY SERVICE  
FOR AIRPORTS \* OUTINGS \* NEAR OR FAR  
UK AND ALL EU COUNTRIES

FOR ENQUIRIES & BOOKINGS, TELEPHONE  
**01264 324655**

## **The Andover Printing Company**

- ✓ Business Stationery
- ✓ Brochures & Leaflets
- ✓ Marketing Material
- ✓ Full Artwork Facilities
- ✓ All Artwork Accepted
- ✓ Small or Large Quantities
- ✓ Full Photocopying Facilities
- ✓ High-Volume Copying



**COME AND SEE US  
ON THE WALWORTH  
BUSINESS PARK**



**01264 334220**  
**[www.andoverprinting.co.uk](http://www.andoverprinting.co.uk)**

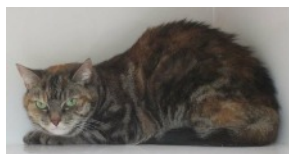


Homing Enquiries 0345-2601501 or [andovercats.org.uk](http://andovercats.org.uk)  
 Fund-raising & volunteers 0773-242196 or  
[coord@andovercats.org.uk](mailto:coord@andovercats.org.uk)  
 Items for resale 01256-892773

Last month we took in yet another pregnant cat. She will be in care, in a pen for at least three months until her kittens are old enough to leave. Please spread the word about our neutering offer. We ask for a voluntary donation of just £10 and the cat can go to any of the vets in Andover.

We had fun at Chute fete and our soft toy tombola was very popular with the children. We have now used up our stock of soft toys so new-looking, clean donations would be gratefully received. We also spent a weekend fund-raising at Pets at Home. Many thanks to the store for making us so welcome.

Gemma is really sad. Her last owner was an old lady who lived alone and recently died. The family said Gemma would sit by her owner but would run away and hide



when anyone else came near. She is not at all aggressive and can be handled, and likes to be stroked gently, but will always retreat to a corner. She needs some TLC and patience. There must be some kind person out there who will offer her a home.



# HBS FUELS

A local, family run company delivering  
fuel to homes and businesses.

**FREE DELIVERY ON:**

Kerosene  
Gas Oil  
Bulk LPG  
Gas Bottles

**EXPERT OIL & LPG ENGINEERS FOR:**

Servicing & Maintenance  
Boiler Breakdowns & Repairs  
New Boiler Installations  
Aga & Rayburn Servicing  
Free Estimates & Surveys



Please call 01264 860263  
[www.hbsfuels.com](http://www.hbsfuels.com)

Thirt Way, Martins Lane, Chilbolton, Stockbridge,  
Hampshire. SO20 6BL



# The Enham Club

*The family orientated village social club right on your doorstep*

What's On ?



## BT Sport has arrived at the Enham Club

Contact: [enhamclubltd@hotmail.co.uk](mailto:enhamclubltd@hotmail.co.uk)

15 Newbury Road, Enham, SP11 6HG

01264 352098



Like us on  
**Facebook**



Like us on  
**Facebook**



## **Enham Club Ltd Country & Western**

**15 Newbury Road, Enham, SP11 6HG**

16TH JAN.	PETER SHAW
20TH FEB.	KEVIN BULL
19TH MAR.	BEN THOMPSON
16TH APR.	STEVE LAYNE
21ST MAY.	ROOT'N TOOT'N
18TH JUN.	DARREN JONES
16TH JUL.	TENNESSEE COUNTRY DUO
20TH AUG.	DAVE WILSON
17TH SEPT.	CHRIS HARRIS
15TH OCT.	KY RIVERS
19TH NOV.	STEVE HANKS
17TH DEC.	MARTIN JAYE

**CHECK OUT OUR C&W NOTICE BOARD FOR  
MORE INFO !**

**Guests £5 Members Free**

**01264 352098**

**[enhamclubltd@hotmail.co.uk](mailto:enhamclubltd@hotmail.co.uk)**

# Fearless Sleep

You can enjoy a wonderfully **Restful, Restorative Sleep**

**Your FREE Audio**

**[www.BoostTherapy.co.uk](http://www.BoostTherapy.co.uk)**

**Download It Today**

**BOOSTTherapy**

Hypnotherapy To Make You Fearless



**THE OAK SMANNELL**

**Quiz Nights** on 10th & 24th August & 7th September

## **LIVE MUSIC**

**Bank Holiday Sunday 28th August** from 7pm Rock & Blues

Hog Roast from 6pm. Open until 10pm

## **SUNDAY ROAST**

\*Roasts served from 12pm - 4pm choose from Hampshire Beef, Lamb & Greenfield

Pork £10.95 and additional courses only £3!\*

\*Additional courses include starters and desserts

**Don't forget we cater for any function too, enquiry within**

Tues-Fri 12pm-3pm & 6pm-11pm, Sat 12pm-11pm

Sun 12pm-6pm, Mon CLOSED



[www.theoaksmannell.com](http://www.theoaksmannell.com)



01264 363075



[theoaksmannell](https://www.facebook.com/theoaksmannell)



@TheOakSmannell



[theoak@email.com](mailto:theoak@email.com)

## How to contact your Member of Parliament



### Kit Malthouse



[kit.malthouse.mp@parliament.uk](mailto:kit.malthouse.mp@parliament.uk)



01264 401401



Or write to me at my Constituency

Office:

2 Church Close, Andover, SP10 1DP

***I hold regular surgeries for all constituents in North West Hampshire***

## Your Local Test Valley Borough Councillors

*If you have any ideas, issues, problems or concerns that you wish to raise, then please feel free to contact us, using the details below.*

### ***Alex, Phil & Tracey***



**Cllr Alex Brook**

[cllrabrook@testvalley.org.uk](mailto:cllrabrook@testvalley.org.uk)

07801 936474



**Cllr Phil North**

[cllrpnorth@testvalley.org.uk](mailto:cllrpnorth@testvalley.org.uk)

07732 423023

[www.cllrphilnorth.co.uk](http://www.cllrphilnorth.co.uk)

[www.facebook.com/cllrphilnorth](https://www.facebook.com/cllrphilnorth)



**Cllr Tracey Preston**

[cllrtpreston@testvalley.org.uk](mailto:cllrtpreston@testvalley.org.uk)

07775 927161

## **HURSTBOURNE OSTEOPATHY PRACTICE & SPORTS INJURIES CLINIC**

**FOR APPOINTMENTS CALL  
(01264) 736007**

Muscular and joint stiffness and pain due to:

Age, wear & tear, poor posture, repetitive strain.

Back and neck pain:

including headache, 'trapped nerve', sciatica

Frozen shoulder.

Back pain during and after pregnancy.

Acute and long-term sports injury treatment and advice  
to ensure rapid return to activity.

---

**Victoria House, Hurstbourne Tarrant, SP11 0BD; The one with the skeleton!**

**Email: [enquiries@hbtosteopathy.co.uk](mailto:enquiries@hbtosteopathy.co.uk) Web: [www.hbtosteopathy.co.uk](http://www.hbtosteopathy.co.uk)**

## **John Pike Coaches**

**Taxi and Minibus Hire**

**49-seater executive coaches for rent**

**- other sizes also available**

**01264 33 77 44**

THE ONLY NUMBER YOU NEED FOR:

LOCAL AND LONG-DISTANCE RUNS

DAILY AIRPORT RUNS - DOOR-TO-DOOR

HEATHROW AND GATWICK - ADVANCE BOOKING ADVISABLE

FARESHARE AVAILABLE IN ANDOVER AREA

77 Scott Close, Walworth Industrial Estate, Andover, SP10 5NU



**Wood burning Stoves**  
**Kitchen Ranges**  
**Biomass Boilers**  
**Full design and  
installation service**

Please visit our wood  
burning centre to view  
our extensive range of  
wood fuelled appliances



APPROVED INSTALLER



**RECC**   
RENEWABLE ENERGY CONSUMER CODE

**01264 850 742**

Unit 1, Garlands Trading Estate,  
Cadley Road, Collingbourne Ducis, Marlborough, Wiltshire SN8 3EB  
email: [info@sarsenenergy.co.uk](mailto:info@sarsenenergy.co.uk) [www.SarsenEnergy.co.uk](http://www.SarsenEnergy.co.uk)



**Rob's Garden Services**  
**01264 332810**  
**07783 083122**  
**[rob garden1966@gmail.com](mailto:rob garden1966@gmail.com)**

# Esseborne Manor

Fine Dining in  
a relaxed atmosphere

Lunches with Wine

Fabulous  
Sunday Lunch Buffet

Full Afternoon Tea

Dinner & Grill Menu

7 Course Tasting Dinner



The Ideal Venue for  
Weddings & Celebrations



## Your Local Skip Hire Company

BOOK ON YOUR SMART PHONE OR ONLINE FOR:

- ✓ Quick and easy 24/7 online reservation
- ✓ Our lowest rates
- ✓ Secure payment powered by WorldPay
- ✓ Next day delivery and excellent service
- ✓ Skips from 4 to 40 yard available
- ✓ Local authority skip licenses



### We recycle more...

A303 Materials Recovery Facility, Barton Stacey, SO21 3QS

 **01264 720 257**

\* Offer available until 31\* December 2016 online only using our brownskips.com website. Standard terms & conditions apply.

**SMANNELL PARISH**  
**OFFER**

**£5<sup>+VAT</sup> OFF**  
**SKIP HIRE\***

**OFFER CODE: SMANNELL**

# ARBORICULTURE Specialist



- All aspects of tree work
- Stump Grinding
- 24 Hour Emergency Call Out
- Logs For Sale  
(seasoned hardwood)
- Top-Soil For Sale
- Fencing  
(domestic & commercial)
- Digger/Operator  
Hire (good rates)



01264 735609  
07824 178242  
[tree.styler@hotmail.co.uk](mailto:tree.styler@hotmail.co.uk)



## HARMSWORTH'S

Andover's Premier Supplier Of "Preloved" Furniture

"NEW SHOWROOM IN ENHAM ALAMEIN"

Check Out Our New Website

[www.usedathome.co.uk](http://www.usedathome.co.uk)

Tables, Chairs, Sofas, Single Chairs, Chest of Drawers,  
Bedside Chests, Wardrobes, Display Cabinets, Beds,

Enough To Furnish A Whole House!



We have been dealing in preloved/slightly used furniture for nearly 3 years and have built up a solid and dependable service. Viewing is easy and by appointment. House Clearances also undertaken at a very reasonable rate.

Please contact: Miles Harmsworth on 07594 800998

# Satellite & aerial



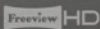
## Satellite & Aerial:

- TV Aerial Installations and Repairs
- Sky Satellite Installations
- Freeview & FreeSat
- FM & DAB Radio Installations
- Extra TV, Satellite & Telephone points
- Commercial (IRS, CCTV)
- European & Motorised

## Sound & Vision:

- Home Entertainment Systems
- Home Cinema
- Multi Room Audio Visual Installations
- LED, LCD, Plasma TV's & Projectors
- Home Automation Systems
- Lighting Control
- Commercial

**For a friendly and professional service please call 01264 324 224,  
email [info@onedegreewest.tv](mailto:info@onedegreewest.tv) or visit [onedegreewest.tv](http://onedegreewest.tv)**



**one degree west**  
satellite & aerial

# Keeping your home & business secure

One degree west security services are a leading provider of intruder alarms, CCTV systems and door entry systems for homes and businesses. Our state-of-the-art home security systems include wireless house alarms, security cameras & intercom systems.

## Intruder alarms:

Intruder alarms to protect homes & small businesses. We provide both hard-wired and wireless burglar alarms.

## CCTV Systems:

CCTV systems for home surveillance and commercial security including remote viewing via internet and smartphones.

## Access Control:

Door entry systems / Access Control including keypad and intercom systems for residential and commercial properties.

**For a friendly and professional service**

**01264 324 224**

**[info@onedegreewest.tv](mailto:info@onedegreewest.tv) // [www.onedegreewestsecurity.co.uk](http://www.onedegreewestsecurity.co.uk)**

**one degree west**  
security services