

# PARISH OAK



FEBRUARY 2017

# Parish Oak Activity Calendar

## February 2017

Sun	Mon	Tues	Wed	Thurs	Fri	Sat
			1 <sup>st</sup>	2 <sup>nd</sup>	3 <sup>rd</sup>	4 <sup>th</sup>
			<p><i>The Oak, Smannell: Quiz Night</i></p>			
5 <sup>th</sup>	6 <sup>th</sup>	7 <sup>th</sup>	8 <sup>th</sup>	9 <sup>th</sup>	10 <sup>th</sup>	11 <sup>th</sup>
<p>10am <i>St George's: Communion</i></p>			<p>2 - 4pm <i>Rectory: Craft Group</i></p> <p>7.15pm <i>Cedar Print Room, Enham: Enham Alamein Parish Council Meeting</i></p>			<p>12noon <i>Valentine's Lunch: Jubilee House</i></p>
12 <sup>th</sup>	13 <sup>th</sup>	14 <sup>th</sup>	15 <sup>th</sup>	16 <sup>th</sup>	17 <sup>th</sup>	18 <sup>th</sup>
<p>9.30am <i>Christ Church: Matins</i></p> <p>10.45am <i>Christ Church: Family Service Launch Pad</i></p> <p>3pm <i>Elizabeth House, Enham: Evening Service</i></p>		<p>3pm <i>Smannell &amp; Enham School: Messy Church</i></p> <p><i>Valentine's Celebration: The Oak, Smannell</i></p>	<p><i>The Oak, Smannell: Quiz Night</i></p>			<p><i>Enham Country &amp; Western Club: Mickey Page</i></p>
19 <sup>th</sup>	20 <sup>th</sup>	21 <sup>st</sup>	22 <sup>nd</sup>	23 <sup>rd</sup>	24 <sup>th</sup>	25 <sup>th</sup>
<p>10am <i>St George's: Communion</i></p>				<p><i>From 2pm The Rectory:, House Group</i></p>		
26 <sup>th</sup>	27 <sup>th</sup>	28 <sup>st</sup>				
<p>10am <i>Christ Church: Communion</i></p>						

# USEFUL TELEPHONE NUMBERS

## The Church

Parish Priest	Rev. Val Gagen	748065
Pastrow team Priest-in-charge	Rev. Alex Randle-Bissell	512161
Pastrow Team Administrator	Jude Appleby	07999 352585
Churchwarden - Smannell	Irene Wilson	359950
Churchwarden - Enham	Emma Kinchenton	0783 7736681
PCC Treasurer	Noel Pope	352968
PCC Secretary	Vacancy	
Gift Aid Secretary	Rod Bowker	357201
Parish Magazine Editor	Peter Calcraft	512262

## Local Services

Smannell & Enham (CE) School		323201
Enham Club, Landale Wilson Hall		352098
Enham Parish Council	Chairman: Leslie Francis	335678
Smannell Parish Council	Chairman: Rod Bowker	357201
Test Valley Borough Council		368000
Enham Service Station		352651
Enham Shop and Post Office		335678
Enham Trust		345800
Andover Leisure Centre		323355
The Oak (Public House)		363075

## Emergencies

Hospitals Andover Memorial		358811
Royal Hampshire County		01962 863535
NHS 111		111
Neighbourhood Watch	Richard Budge (Smannell)	351129
	Meg Chant (Little London)	355167
	Tim & Leslie (Enham)	335678
<b>Police</b>		<b>999 or 101 or 0845 045 45 45</b>
RSPCA		08705 555 999
Samaritans		0845 7909 090
Social Services - Andover		387400

## Utilities

Southern Water		0330 3030368
Southern Electric - Emergencies		0800 0727282
British Gas - Emergencies		0800 111 999

# MERIT re SPECIALISTS



TYRES ▼ EXHAUSTS ▼ BATTERIES ▼ BRAKES ▼ AIR CONDITIONING  
4 WHEEL ALIGNMENT ▼ MOTORCYCLE TYRES ▼ PUNCTURE REPAIRS

## CALL NOW ON: 01 264 333044

WE HOLD OVER 30,000 LEADING BRAND TYRES IN STOCK IN ANDOVER



**BRIDGESTONE**  
*Your Journey, Our Passion*

**Continental**   
The Future in Motion

**GOODYEAR** 

 **DUNLOP**

**AVON**  
TYRES

**PIRELLI**

  
**COOPER**

**Firestone**

PLUS A FULL RANGE OF ECONOMY TYRES  
AT **EXTREMELY** COMPETITIVE PRICES

**VISIT**

[www.merityre.co.uk](http://www.merityre.co.uk)  
TO FIND YOUR NEAREST  
CENTRE OR TO  
**BUY TYRES ONLINE!**

33A WEST WAY,  
WALWORTH BUSINESS  
PARK, ANDOVER  
HAMPSHIRE, SP10 5JG

Open 7 days a week. All major  
credit cards accepted. Fleet  
and company cars welcome.



## EDITORIAL

I always feel the February issue of the Parish Oak is the “genuine” first issue for the new year. There is always such a rush to get the January issue out before the Christmas break and thus that issue reaches your door well and truly still in 2016!

So here I am, on a foggy and frozen January afternoon writing the first editorial of 2017.

We have seen the magazine grow in size over the last year. That’s true in both the number of content pages and also in the number of companies that have a desire to advertise their wares within the magazine. We trust you may find reason to use their services within the area.

This is the first month when we will be sporting our new “tangerine” cover colours. The intention is obviously to draw your attention (!! ) to the content of your own locality magazine, but I do hope you like the changes we have been bringing to the magazine over recent months.

Perhaps I should also remind our readers that the content of the magazine can be found on our website at [www.parishoak.co.uk](http://www.parishoak.co.uk). I know many family and friends that have moved away from the area to other parts of the country and indeed some that have left the UK to live in other countries are finding the website a useful way to be kept abreast of local developments.

There are also a growing number of links to our Facebook page at [www.facebook.com/parishoak/](http://www.facebook.com/parishoak/). By joining the Facebook link you can receive regular updates directly into your social media news feed.

So off we motor into 2017. February brings the opportunity to celebrate our love for the special person in our lives under the guise of Valentine’s special occasion. Why not mark that special event with a twist at the Valentine’s lunch on the 11<sup>th</sup> of February at Jubilee House in Smannell? Further details can be found within the magazine.

*Peter Calcraft*



## CHURCH IN SMANNELL & ENHAM



### Ramblings from the Rectory ...

Yesterday I picked my first snowdrops of the year from the Rectory garden ... and how beautiful they were too. It almost makes my heart want to skip to see such tiny fragrant harbingers of Spring appearing from the cold damp earth, at this time of year.

Like most of you, I always look forward to the flowers appearing in the garden as the days begin to lengthen ... but snowdrops being our very first flowers of the year, hold a special place in my heart.

I found a poem about snowdrops that I'd like to share with you:

Snowdrops  
Humble, peaceful and pure,  
braving the winter snow.  
Fragile, yet strong like love,  
assuring us of springtime's resurrection.  
Transplanting in the green,  
like our faith  
when it touches others,  
growing slowly year by year.  
Clustering nodding heads,  
giving assent to the coming spring.  
Calm beauty,  
an image of hope despite the odds,  
sentinels in the dark quiet earth.  
Such beauty  
pointing to the stillness of God.

As well as the beautiful first flowers, we have many others things to look forward to in the month of February. If you haven't yet tried our new family

service called Launch Pad, on the 2<sup>nd</sup> Sunday of the month at Smannell church, do give it a go. It has especially been created for children and families. You are welcome to arrive at the church from 10.30am onwards, and the service will start at 10.45am. It is a short service lasting from about 30 to 45 minutes and there is time to chat over a cup of coffee or tea afterwards if you would like to.

Messy Church continues to be successful in the school once a month, and our February session is on Tuesday the 14<sup>th</sup> at the school hall from 3-5pm. Any child with a family adult member is very welcome to come, but we can always do with extra adults or teenagers to help. You don't need any special skills for this and we would welcome more hands to help make everyone a cup of tea even. Do speak to Val if you are interested please.

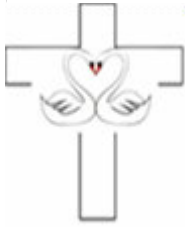
Our craft group will be reappearing in February. Unfortunately we had to postpone the January session but anyone is welcome to come to the Rectory on Wednesday afternoon 8<sup>th</sup> February and bring with you any craft you would like to do. We meet from 2 to 4pm and have a cup of tea and a chat together...new members are welcome to join us. Or come to the House Group at the Rectory on Thursday afternoon, 23<sup>rd</sup> February at 2pm, where we are exploring together different forms of prayer. Again you would be most welcome.

If you want to know more about any of these events, do get in touch ... and whatever you do in February I wish you a blessed and a peaceful month.

God bless,

your Parish Priest, Val

***Rev. Val Gagen***



*To love, to learn, to live ... to leave a legacy*

## **SMANNELL & ENHAM CHURCH OF ENGLAND PRIMARY SCHOOL**

On reflection I've realised that news from the school often seems to feature lots of trips, visits and interesting activities. While these are really important parts of our learning of course not every day can be filled with such exciting events. So I thought it may well be interesting to share with you some of the topics that our children are learning about at present.

Our youngest children in Robins Class have chosen their own learning theme of Snow and Ice, which is very appropriate at this time of year. As well as a full sized igloo in the classroom they have been designing all sorts of experiments to find out both what melts ice and where in school it melts quickest.

In Puffins the children are learning all about extreme weather around the world and recognising that our weather, despite the ice on the ground today, is quite stable. In comparison, Kingfishers are exploring much warmer climates as they learn all about the Ancient Egyptians. As always, one of the favourite parts is mummification, I think that just about everyone in the class was delighted to be able to explain how brains were removed.

Our oldest children in Swallows Class also seem to have a bit of a fascination with disaster as they explore, amongst others, volcanoes and earthquakes. From the marvellous explanations that I have heard in the past few days I think that it is very likely that we could be training the next generation of volcanologists. Wouldn't that be a fascinating claim to fame!

***Peter Shaw***  
***Head Teacher***



## **SMANNELL PARISH COUNCIL**

### **Road Signs:**

Following the request from a resident for a road name sign displaying "Green Lane" to identify the road for deliveries and emergencies, Test Valley are proposing that roads throughout the parish have name signs. Green Drove, Green Lane, Stoke Road and Smannell Road would all have road name signs at either end.

Hampshire County Council will be contacted with a view to replacing the road traffic sign at the four way junction in Smannell with a traditional iron finger-post road traffic sign.

### **Dog-bins in Little London:**

The clear majority of residents at the top of Big Street have asked that there be no dog bins in their area. However, no objections have been received to the proposal for one near the Playing Fields gate.

### **Finance:**

The budget for 2017/18 was agreed showing a one percent rise in precept to £22,777. The council agreed a grant of £5,000 to cover the costs of blinds at the Augusta Park Community Centre.

***Rod Bowker***

***Chairman, Smannell Parish Council***

## **ENHAM ALAMEIN PARISH COUNCIL**

At the January meeting there were various discussions about grant opportunities and projects in hand that need to be actioned as soon as possible. These include the walled garden, play areas, improved paths and highways.

The Parish Council has purchased a defibrillator which will be positioned outside the Shop & Post Office on the 30th January. Although there are clear instructions for its use there will be some demonstrations taking place. If anyone is interested please contact me at the Enham Shop & Post Office.

We do hope that everyone who attended the Pantomime enjoyed the performances. We would be interested to hear your comments regarding this community event and any thoughts and ideas for any others in 2017.

The Community Speedwatch programme will start soon and we are hoping the unit will arrive in February. Training will then be given to those volunteers already signed up. If you would like to join or require more information please pop in and see me or speak to any Parish Councillor. The more action taken the more effective the scheme will be. The aim is to reduce speed, increase awareness and provide data that will assist in reducing the approaching speed to 40 mph north and south of the village.

There have been issues with inconsiderate parking - some on pavements causing obstruction and a hazard to others. If you wish to report this you can call 101 and it will be logged. Police powers are limited but they will take details and action where they can. Alternatively you can report the information to the EAPC or Enham Trust who may be able to help.

The next meeting of the Parish Council will be held on Wednesday, February 8<sup>th</sup> at 7.15pm in The Cedar Print Room Resource Centre.

***Leslie Francis***  
***Chairman, Enham Alamein Parish Council***

## **ENHAM ALAMEIN SHOP and POST OFFICE**

We would like to thank everyone who helped us raise £200 from our Christmas Raffle for The Countess of Brecknock Hospice.

We are currently running a tombola table full of prizes with proceeds to Battersea Dogs Home - do pop in and try your luck.

January has seen some cold mornings and unsociable weather but rest assured we have all the essentials you need including freshly baked bread and pastries and winter fuel, kindling and salt. If you need a home delivery please do ask.

If you have time on a Tuesday morning from 11.15am until 12noon please do join Karina's class for gentle exercise and a good chat. It is lovely to hear laughter coming from the rear room amongst the general day to day postage and shopping.

Don't forget on a Friday you are welcome to come and sit in for a meal from Tim's Fish n Chip menu. There is now Southern Fried Chicken and pickled eggs on the menu.

***Leslie & Tim***



### **Valentine's Lunch**

On Saturday 11<sup>th</sup> February 2017 at 12 o'clock there will be a Valentine's Lunch with a twist at Jubilee House to raise funds for the parish churches. The price will be £15 per person.

Ladies, please wear something red.

Please contact Pete Bowker on 357201.



Heath Gunn, Interim CEO

01264 345800

Hello everyone,

I hope you're all enjoying a wonderful start to the New Year; with the festivities a distant memory and some resolutions to make good on.

The next few months are shaping up to be really exciting here at Enham Trust, as we prepare for many upcoming events and initiatives.

6<sup>th</sup> – 17<sup>th</sup> February will see us embark on our second Enham Trust Make a Will Fortnight. During this time, together with our partners, we are offering you the chance to create your Will, or update your existing Will, for a small donation to the Trust in place of usual Will writing fees. For more information about the initiative or to find a list of participating solicitors, please visit: [www.enhamtrust.org.uk/makeawill](http://www.enhamtrust.org.uk/makeawill).

We're delighted to have had the support of several Tesco stores in Andover and the surrounding villages during January, as customers were encouraged to vote for us with their blue tokens to help us win £5000. We'll let you know how we get on next time.

In April, we have several runners participating in the London Marathon on our behalf; taking on the epic 26.2 mile challenge to raise funds for Enham. I am truly in awe and incredibly grateful to each and every participant, and would like to wish them all the best of luck ahead of the event.

If you haven't already, please do visit the Enham Trust blog; a casual and informative space, we use our blog to comment on the latest news and events occurring within the Third Sector, as well as encouraging our clients, staff and volunteers to contribute their personal stories, thoughts & opinions on disability and related issues. Our blog can be found here: [blog.enhamtrust.org.uk](http://blog.enhamtrust.org.uk)

Finally, congratulations to Specialist Employability Support customer Peter who, with our support, has gained sustained employment with a local supermarket after being unemployed for 5 years.

More information can be found on our website: [www.enhamtrust.org.uk](http://www.enhamtrust.org.uk)

Best wishes,

***Heath Gunn, Interim CEO***

## GREAT FOOTSTEPS AND FOOTPRINTS

**“We all do think of doing something in life; be it significant or not, do something positive. If you pursue great footsteps, you leave great footprints”.** This is a quote taken from the book ‘Distinctive Footprints of Life: Where are You Headed To?’ by the author and philosopher Ernest Yeboah.



This is the second instalment on the life and times of Liz Hall – a truly remarkable lady who has lived amongst us here in Upper Enham for many years and has recently celebrated her 90<sup>th</sup> birthday.

In the last issue of the Parish Oak we covered her early life up to the completion of her university studies at Liverpool University.

Through Liz’s childhood, she had developed a great talent at striking a cricket ball across the outfield and on to the boundary! Of course, in those days women’s cricket was quite a rarity, but it was a sport that Liz excelled at, first at the playing fields of the Royal School at Bath and then at Longleat she had to be content with playing against the men from the Longleat Estate and village, but of course there would only be one winning team (that for which Liz played) through most of those occasions. At Liverpool University Liz continued her prowess in front of the cricket stumps and inevitably her success with the bat led to her selection to play for England in the third test series between England and Australia in 1949.

Unfortunately this time England were planning to travel to Australia for a 3 month tour and the sheer cost was beyond the meagre funds that Liz was able to contribute, and so she had to forgo this great opportunity.

In later life, Liz qualified as a cricket umpire and travelled across Hampshire to umpire numerous matches. But still cricket was considered to be a sport that women should not be encouraged to partake in and Liz has had to fight against great prejudice to enjoy her sport over the year. Of course all the facilities for umpires across the country were found to be built for male umpires, but little daunted Liz in continuing to enjoy her cricket. She still visits Lords and the other great cricketing institutions for Test matches, even until quite recently.

Liz married Philip Hall in the June of 1955 in Ascot, when she was 29. Philip's family had recently returned to live in Ascot having been living in Sri Lanka where they were tea planters. Philip in fact had been schooled in South Africa, where he had been living with an aunt. By the time of the wedding, Philip's family had bought a farm near to Oxford, and so it was as a farmer's wife that Liz commenced her married life.

Philip and Liz had their first child, Jonathan, born at the farm near Oxford in 1956. Once a month, Liz would walk a good couple of miles to the nearest village, with Jonny in his pram, to attend the local baby clinic. It was becoming more and more apparent that Jonny's rate of development was far behind that of other babies born at a similar time. Neither nurses nor doctors would tell Liz what was wrong with Jonny, but Liz became increasingly concerned that his poor rate of development was signifying a serious underlying condition.

Liz confronted her GP and eventually a consultation was arranged with a paediatrician in Oxford. In fact, again no real explanation was given to the anxious mother. But then when Liz came for the second time (on a very warm day) to the Oxford hospital clinic, Jonny and Mum were taken into a room where there were a stream of doctors (Liz remembers as many as 16 doctors were present) to examine the baby. None of the doctors spoke to the worried mother, they seemed to be intent on examining Jonny's hands..particularly the lines in his hands.

Liz asked them "What are you doing, what are you looking for.." they said "We can't say..".

Jonnie had been waiting for a long day and it was very warm..he began crying and was very depressed by it all. Liz picked him up and said "I've travelled a long way and Jonnie has been waiting for ages to be seen, please tell me what is the matter with my son?" The consultant said "Don't worry dear, we have a lovely place..we can pop him in tomorrow..in fact he could go in today if you like.

"But what is the matter with him? I don't want to pop him in anywhere!". So he said "Well he has..he's a Mongol..we have lots of them here at this place..but we have staff to look after them..you go away and have another baby.." Liz said "I'm

sorry, but I don't do things like that". She picked him up and took him back home. He was only 5 and no way was he going to be taken from this redoubtable mother!

And so Liz resolved to raise Jonny herself. She was to face great pressure, both from her own wider family and from the medical profession who all felt that Liz should conform to the usual practice of that day and age where a Down's Syndrome child would be immediately left in a sub-normality hospital where they would be incarcerated for the rest of their lives.

Liz was anxious to find any literature that would describe the condition and to meet others who might be similarly defying the authorities and keeping their children at home.

In 1946, Judy Fryd, a mother of a child with a learning disability formed "The National Association of Parents of Backward Children". She later wrote to "Nursery World" inviting other parents to contact her. Many, including Liz, wrote back to Judy as she wrote numerous articles in magazines through the 1950s, expressing their anger at the lack of services for their children.

As such, there was a great outcry about the hospitalisation of these children and "The National Society for Mentally Handicapped Children" formed in 1955.

Liz was instrumental in setting up the Oxford Mencap group and then later the Andover branch of Mencap. She is the only remaining life member of Royal Mencap, and we will focus in on the work she commenced and the great contribution that Liz has made for children suffering from mental disabilities in the Andover area in the next issue of the Parish Oak.

***Editor's Note: Apologies to Liz and the Hall family. I need to correct the name of Liz's father to Adrian Fossbroke-Hobbs from the previous article.***

---

## A WEEK IN THE LIFE OF A COUNTRY VILLAGE SHOPKEEPER and POST MISTRESS



When we decided to run the village shop & Post Office and move to Enham we shared the news with my daughter Melanie. Her response on hearing about the uniqueness of its community was " that will suit you Mum as you like looking after people". It was also the day she advised us we were to be grandparents for the first time. Now 12 years later we still enjoy living here and providing a service to some great people. Every day is different but the values remain the same so here is a week's snapshot of the 363 days a year that we open the doors of Enham Shop & Post Office

### ***Monday***

The start of a working day at 6.30am with cooking of bread & pastries and food-to-go, open doors, newspapers, fresh bread and milk and preparing a good selection of sandwiches. The Post Office is open at 7.00am too and I ensure all stamps, monies etc are ready before I leave at 9.45am to go to Vernham Dean. I provide an outreach service twice a week for a community that has lost its shop and post office. When I get back just before noon I check for any additional food-to-go that is required and work the rest of the day until 7.00pm. Tim cooks tea and we eat together at 7.00pm. An awful evening ensues as my son David is taken to hospital with chest pains. He was discharged at 3.30am on Tuesday morning with an unclear diagnosis for an enlarged heart.

### ***Tuesday***

Usual routine and different fresh food suppliers call together with our biggest weekly wholesale delivery. Times vary and we (me, Tim & Caroline) work together to fill the shelves. Quality and price checking is required and our supply



representative called for a meeting. A busy day ensues as we had an unannounced Environmental Health inspection which took over two hours. No issues were raised and our certificate will follow but always good to know we are doing things correctly. Three months accounts sit on the dining room table awaiting preparation for VAT but after taking Daisy for a short walk, collecting her new food, checking on my son and after a sleepless night I am just too tired for paperwork. Daisy had life saving surgery on New Year's eve and is slowly recovering – such an emotional time and a lot of my focus during the last couple of weeks. She is such a lovely dog and a big part of our life. Daisy came from Battersea Dogs home so we are currently running a tombola to raise funds to say "Thank you". It is great to hear a cheer in the shop when someone picks a winning ticket.

### ***Wednesday***

After the opening routine and more fresh sandwiches I walk Daisy before I tackle the dreaded VAT. Although very slow at the moment we are taking our usual walks each day. The mornings are across Landale Close, along the track by Evelyn Orde Cottage, past Greenfields and up the lane to Kings Road. Past the vicarage and down the hill back to Landale Close. Although Southampton born and bred, I love the countryside. My dad was a part time gamekeeper and I used to accompany him whenever I could. My Uncle was keeper at Broadlands and my first "job" was as a stop. I've always loved mornings and the start of the day approaching – good job then as I had to be up at 5.00am. I wasn't old enough to "beat" but I enjoyed the life all the same. I feel the same way every day unless I happen to be unwell. Wednesday is balancing day for the Post Office so everything has to be accounted for. After a lovely dinner prepared by Tim (you've probably gathered Tim does the cooking) the end of the evening finishes with accounts ready to go!

### ***Thursday***

Finally off to Vernham Dean after my car wouldn't start in the minus 6 degree temperature! Daisy misses her vet appointment but I managed to call and collect my prescription and we got to the vets later in the day. My daughter arrives at midday to leave her dog Ollie for the weekend. Lovely to see them all mid-week as I hadn't managed to get to visit. We now have five granddaughters and one grandson. We have another wholesale delivery to deal with. In the afternoon I am interviewed and filmed for views on rural policing. A request by the Hampshire Police Commissioner as there will be a summit in February. After balancing the Post Office at 5.00pm and dispatching to the postman at ten past five I travel to Southampton to see my son. He has a follow up appointment on Friday and I called early enough to see their three girls before bed time and catch him after work. A lovely walk up to the Southampton Sports Centre with three dogs – I took his too! Both my children live near where I grew up, so it is familiar to me.

### ***Friday***

Our busiest day of the week! My aim is to get out of the kitchen by 10.30am so that Tim can prep for Fish & Chips Friday. Available 12noon until 7.00pm. Tim cooks, so I spend the time at the counter with Caroline and Lottie. The table is set up for our regulars and today we have a couple of ladies visiting just for lunch. I manage to squeeze in a lovely cold but sunny walk with Daisy & Ollie, seeing a pair of young foxes up the path. We feed the birds every winter's day in our garden and I love wildlife and nature. Spring is my favourite time but today the colours are just so pretty with a clear blue sky and bright sun. An afternoon soon becomes evening and after a bath I am sat typing this article and looking forward to the weekend.

### ***Saturday***

Saturday brings us The Pantomime – The Wizard of Oz. Provided by the Parish Council and free for all children. We hope to bring the community together with a fun event. I have prepared drinks and sweets and will be on the door for the 2.00pm matinee and 7.30pm performance. I am hoping my son will come up as I finish at 12.30pm on a Saturday now. Usually we travel to Southampton to see the children and grandchildren and catch up on their week. We are a very close family and although my dad passed away last April and Mum nearly 20 years ago their values exist through us today. I text or speak to my sister every day as they have just retired to Turkey. Saturday is also a time we can enjoy taking Daisy out without watching the clock to get back to work. I especially like Sunday mornings as I get some time to take an extra walk with Daisy and enjoy the area where we live.

### ***Sunday***

Sundays brings a more relaxed morning in the shop and when Lottie comes in I usually sit with coffee and toast indoors. The rest of the day is usually our own unless the week hasn't allowed me to do some housework or keep on top of e-mails as chair of the Parish Council and on other village issues. I try each day and evening to be reactive and proactive to improve where we live. For example I responded to a government survey regarding the future of the Post Office government subsidy for rural network. The role of a sub-postmaster within a village store is so important to the community. I try and reflect and think out of the box sometimes on bigger issues and that's why I am a Parish Councillor. The Parish Council has a great opportunity to make a difference to how and where we live. We all do. I care about people and will do my best – that's me. If you want to join me – please feel free to call in anytime.

***Leslie Francis***

## **NEIGHBOURHOOD WATCH**

### **BANK SCAM**

Lloyds customers should be on the lookout for a new sophisticated fraud that involves fraudsters sending fake bank letters.

The convincing letters being sent are replica templates from Lloyds and include their logo, address and signature from a customer service representative. The letter tells recipients that there has been some "unusual transactions" on their personal account and asks them to call a highlighted number to confirm they are genuine.

When victims call the number, an automated message is played and the caller is asked to enter their card number, account number and sort code followed by their date of birth. Victims are then instructed to enter the first and last digit of their security number.

The bank has confirmed that the phone number and letters are fake. The letters are essentially a sophisticated phishing attempt and serves as a warning to customers to question written correspondence from their banks. If you are ever suspicious about correspondence from your bank you should call the customer service number on the back of their card.

BE AWARE it concerns Lloyds today it could be any bank in the future.

### **INCREASE IN CYCLE THEFTS IN ANDOVER AREA**

Easy ways to protect and assist in recovery of your stolen bike:

- Record your serial number today.
- Get an approved lock. Look for the Solid Secure logo on approved locks.
- Always lock your bike at home, even when it is in your garage. When out and about lock your bike up in a secure location at a bike rack or lamp post. Always lock your bike even if you are leaving it for only a few minutes.
- Consider etching your postcode on your bike frame.
- Identify and register your bike with Scheme Immobilized. See <http://www.immobilize.com>

***Richard Budge***  
***Neighbourhood Watch Co-ordinator***

## **Parish Oak Advertising Rates**

**The Parish Oak is a monthly magazine that has an excellent avid readership and covers all households in Smannell, Little London, Enham Alamein, Finkley and Upper Enham.**

**Full page (12 issues per year)      £ 140**  
**Half page                                      £ 90**

**One off insertions, or leaflet distribution by negotiation.  
A5, black and white. 450 homes distribution.**

**Contact Noel Pope by email at [advertising@parishoak.co.uk](mailto:advertising@parishoak.co.uk) or speak with Peter Calcraft on 01264 512262 for further information.**

## **OVEN SCRUB**

Oven Cleaning Service

Call Mark on  
01264 563113  
[www.ovenscrub.co.uk](http://www.ovenscrub.co.uk)

Dazzling results from a caring service

I also clean AGAs, Ranges, Hobs  
Microwaves, Extractors and BBQs



**HBS**  
**FUELS**

A local, family run company delivering  
fuel to homes and businesses.

**FREE DELIVERY ON:**

Kerosene  
Gas Oil  
Bulk LPG  
Gas Bottles

**EXPERT OIL & LPG ENGINEERS FOR:**

Servicing & Maintenance  
Boiler Breakdowns & Repairs  
New Boiler Installations  
Aga & Rayburn Servicing  
Free Estimates & Surveys



Please call 01264 860263  
[www.hbsfuels.com](http://www.hbsfuels.com)

Thirt Way, Martins Lane, Chilbolton, Stockbridge,  
Hampshire. SO20 6BL



**Submission Deadline  
for the March Parish Oak issue:**

**Friday 17th February, 2017**

**Contact: [editor@parishoak.co.uk](mailto:editor@parishoak.co.uk)/Tel: 01264 512262**

## NOTICES

### **Sunday 12th February:**

Launch Pad Service for children and their families....you are welcome to arrive from 10.30am for a 10.45am start.

Matins continues on the 2nd Sunday at the earlier time of 9.30am.

### **Messy Church:**

Tuesday 14th February from 3 to 5pm in the school hall at Smannell. You do not need to go to Smannell School to come to Messy Church. Everyone is welcome, as long as each family group has at least one adult accompanying them.

### **Craft Group and House Group:**

The Craft Group is at the Rectory on Wednesday 8th February from 2 to 4pm.

House Group on Thursday 23rd February at the Rectory from 2pm.

More details from Val.

---



# GroundLord

**Tree Surgery • Tree Surveys  
Fencing • Stump Grinding  
Forestry**

*Fully Qualified, with £5m Public  
Liability Insurance*

*A team of professional experts you can trust*



**07880 557005**  
**josh.pritchard@groundlord.com**

Find us on  
**Checkatrade.com**



# Andover Film Club

for moving pictures

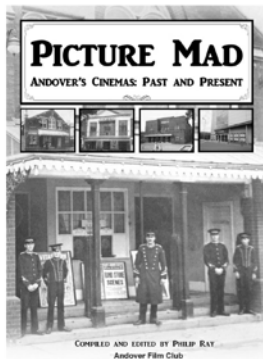
Do you enjoy great films and live near Andover? We show on the 2nd Monday of the month and in the comfort of the local ODEON cinema.

Recently we've screened *Room*, *Grandma*, *Taxi Tehran*, *Carol*, *Gemma Boverly* and *Au revoir les enfants*

Non-members welcome. Admission £6.50

Find out more from:

[www.andoverfilmclub.org](http://www.andoverfilmclub.org) [info@andoverfilmclub.org](mailto:info@andoverfilmclub.org)



**Out now: PICTURE MAD**, our book on the history of Andover's cinemas. Available to buy at Andover Museum or [amazon.co.uk](http://amazon.co.uk). The Savoy, the Rex, the Odeon and more.

## NB FURNISHINGS

[www.nbfurnishings.co.uk](http://www.nbfurnishings.co.uk)

Upholstery & Recovers  
Fine Fabrics & Trimmings  
Wallpaper & Paint  
Curtains and Blinds (mtm)  
Voiles and Nets (mtm)



## Neil Busby

*Antiques & Fine Furniture*

Full restoration service  
French Polishing  
Cabinet repairs  
Veneer work  
Pianos

Made to order bookcase



[www.neilbusby.co.uk](http://www.neilbusby.co.uk)

Harewood Farm, Andover Down. Hampshire SP11 6LJ  
Tel : 01264 333375 or 07803 922405



# Roland Security

Established in 1979.

We are an established firm of honest, reliable and professional locksmiths and security engineers with retail premises in Andover.

Contact or call in for free advice and a sensible price on any of the following:

- Locks and Keys
- UPVC Window and Door Locks and Spares
- Safes
- Intruder Alarms
- CCTV
- Access Control
- Automated Gates, Barriers and Garage Doors

Telephone: 01264 357476

E-mail us at: [enquiries@rolandsecurity.co.uk](mailto:enquiries@rolandsecurity.co.uk)

Or visit us at Unit 6 Mylen Business Centre,  
Beckett Road,  
Andover SP10 3HR.

Free parking on site



# PHIL COX DECORATIONS

## Your local decorator



- PRIVATE/RESIDENTIAL
- INTERIOR/EXTERIOR
- FULLY INSURED/ALL WORK GUARANTEED
- ALL WITH A FRIENDLY AND PROFESSIONAL SERVICE

REFERENCES AVAILABLE UPON REQUEST: **07795385379**

IF YOU ARE INTERESTED PLEASE CONTACT ME IN THE FOLLOWING WAYS:

LETTER: **20 ALAMEIN ROAD, ENHAM ALAMEIN SP11 6HR**

EMAIL: **philwcox@hotmail.co.uk**

HOME PHONE: **01264357579**

# **Billys Luxury PRIVATE HIRE**

7-SEATER MULTI-PURPOSE VEHICLE  
HELPFUL FRIENDLY SERVICE  
FOR AIRPORTS \* OUTINGS \* NEAR OR FAR  
UK AND ALL EU COUNTRIES

FOR ENQUIRIES & BOOKINGS, TELEPHONE  
01264 324655

## **The Andover Printing Company**

- ✓ Business Stationery
- ✓ Brochures & Leaflets
- ✓ Marketing Material
- ✓ Full Artwork Facilities
- ✓ All Artwork Accepted
- ✓ Small or Large Quantities
- ✓ Full Photocopying Facilities
- ✓ High-Volume Copying



**COME AND SEE US  
ON THE WALWORTH  
BUSINESS PARK**



**01264 334220**  
[www.andoverprinting.co.uk](http://www.andoverprinting.co.uk)

# MERIT re SPECIALISTS



TYRES ▼ EXHAUSTS ▼ BATTERIES ▼ BRAKES ▼ AIR CONDITIONING  
4 WHEEL ALIGNMENT ▼ MOTORCYCLE TYRES ▼ PUNCTURE REPAIRS

## CALL NOW ON: 01264 333044

WE HOLD OVER 30,000 LEADING BRAND TYRES IN STOCK IN ANDOVER

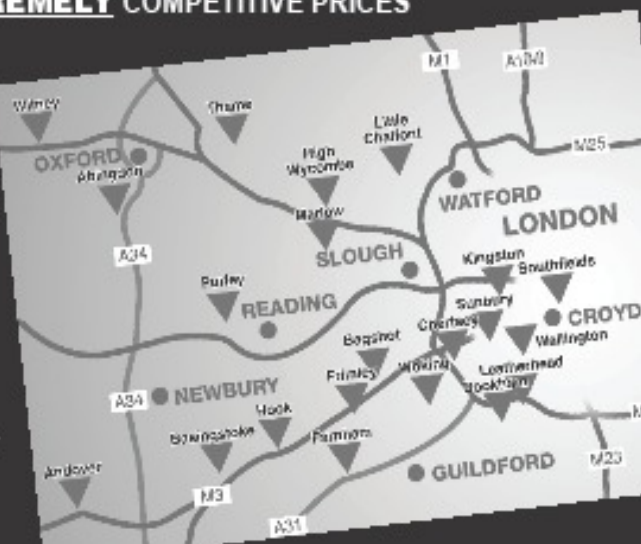


PLUS A FULL RANGE OF ECONOMY TYRES  
AT **EXTREMELY** COMPETITIVE PRICES

**VISIT**  
[www.merityre.co.uk](http://www.merityre.co.uk)  
TO FIND YOUR NEAREST  
CENTRE OR TO  
**BUY TYRES ONLINE!**

33A WEST WAY,  
WALWORTH BUSINESS  
PARK, ANDOVER  
HAMPSHIRE, SP10 5JG

Open 7 days a week. All major  
credit cards accepted. Fleet  
and company cars welcome.



# The Enham Club

*The family orientated village social club Right on your doorstep*

## What's On ?



## Enham Club Country and Western 2017



21st Jan.	<b>Chris Harris</b>
18th Feb.	<b>Mickey Page</b>
18th March.	<b>Kevin Bull</b>
15th April	<b>Ainsley</b>
20th May.	<b>Chris Kenward</b>
17th June.	<b>Ben Thompson</b>
15th July.	<b>Rootin' Tootin'</b>
19th Aug.	<b>Kay D</b>
16th Sept.	<b>Peter Shaw</b>
18th Oct.	<b>CarolAnn B</b>
18th Nov.	<b>Darren Jones</b>
16th Dec.	<b>Lance Merlin</b>



Full size snooker table available to hire

Just £2.50 per hour

## Hall and Lounge bar available to hire

Contact: [enhamclubltd@hotmail.co.uk](mailto:enhamclubltd@hotmail.co.uk)

15 Newbury Road, Enham, SP11 6HG

01264 352098



**Andover's only Independent  
Family Funeral Directors  
and Memorial Consultants**

**S. & J. MADDOCKS**

*offer an experienced, personal and  
friendly 24-hour service  
Local people serving local families  
for over 20 years*

S. & J. Maddocks is a family owned, independent funeral directors.

We are proud to offer an experienced, friendly and personal service combined with attention to detail.

Our aim is for the funeral to be a fitting and fulfilling farewell to someone who is loved, and we have the experience and knowledge to enable you to express your and their individuality.

We offer a 24 hour service and we are always available on the telephone outside office hours and will be happy to discuss your needs, including newspaper announcements, floristry and service stationery. Arrangements can be made at our office or in your own home, but always with the emphasis on a personal and friendly service.

We are also proud to offer pre-paid funeral plans and a monumental masonry service.

If you have any queries, please feel free to call for no obligation advice and guidance.

**Chapel of Rest • Free Parking  
Funeral Plans**

STATION APPROACH  
ANDOVER SP10 3HN

Tel: 01264 355600

[www.sjmaddocks.co.uk](http://www.sjmaddocks.co.uk)



# AIRPORT TRAVEL

**We are never beaten on  
service and will match  
any like for like price !**

**Book us to drive you to -**

**AIRPORTS  
SEAPORTS  
EVENTS  
SHOPPING  
BUSINESS  
WEDDINGS  
And more**

Call the award winning  
**'Let Me Drive YOU'**  
now for best rates .

**01264 363789 - office**

**0775 9646479 - direct**

[WWW.LETMEDRIVEYOUPRIVATEHIRE.CO.UK](http://WWW.LETMEDRIVEYOUPRIVATEHIRE.CO.UK)

**DISCREET- TRUSTED - RELIABLE**

**Just ask our clients !**



## How to contact your Member of Parliament



### Kit Malthouse



[kit.malthouse.mp@parliament.uk](mailto:kit.malthouse.mp@parliament.uk)



01264 401401



Or write to me at my Constituency  
Office:

2 Church Close, Andover, SP10 1DP

*I hold regular surgeries for all constituents in North West Hampshire*

## Your Local Test Valley Borough Councillors

*If you have any ideas, issues, problems or concerns that you wish to raise, then please feel free to contact us, using the details below.*

### *Alex, Phil & Tracey*



**Cllr Alex Brook**

[cllrabrook@testvalley.org.uk](mailto:cllrabrook@testvalley.org.uk)

07801 936474



**Cllr Phil North**

[cllrpnorth@testvalley.org.uk](mailto:cllrpnorth@testvalley.org.uk)

07732 423023

[www.cllrphilnorth.co.uk](http://www.cllrphilnorth.co.uk)

[www.facebook.com/cllrphilnorth](http://www.facebook.com/cllrphilnorth)



**Cllr Tracey Preston**

[cllrtpreston@testvalley.org.uk](mailto:cllrtpreston@testvalley.org.uk)

07775 927161



**Emergency First Aid at Work**  
**First Aid at Work**  
**Paediatric First Aid**

**Your company location**  
**Or in Hurstbourne Tarrant**  
**Competitive rates for Groups or Individuals**  
**www.afa-training.co.uk      01264 736007**

**Steve Swift**

**John Pike Coaches**

**Taxi and Minibus Hire**  
**49-seater executive coaches for rent**  
**- other sizes also available**

**01264 33 77 44**

THE ONLY NUMBER YOU NEED FOR:  
LOCAL AND LONG-DISTANCE RUNS  
DAILY AIRPORT RUNS - DOOR-TO-DOOR  
HEATHROW AND GATWICK - ADVANCE BOOKING ADVISABLE

FARESHARE AVAILABLE IN ANDOVER AREA

77 Scott Close, Walworth Industrial Estate, Andover, SP10 5NU





**Wood burning Stoves**  
**Kitchen Ranges**  
**Biomass Boilers**  
**Full design and  
installation service**

Please visit our wood  
burning centre to view  
our extensive range of  
wood fuelled appliances



APPROVED INSTALLER



**RECC** ✓  
RENEWABLE ENERGY CONSUMER CODE

**01264 850 742**



Unit 1, Garlands Trading Estate,  
Cadley Road, Collingbourne Ducis, Marlborough, Wiltshire SN8 3EB  
email: [info@sarsenenergy.co.uk](mailto:info@sarsenenergy.co.uk) [www.SarsenEnergy.co.uk](http://www.SarsenEnergy.co.uk)



**Rob's Garden Services**  
**01264 332810**  
**07783 083122**  
**[rob garden1966@gmail.com](mailto:rob garden1966@gmail.com)**

# Esseborne Manor

Fine Dining in  
a relaxed atmosphere

Lunches with Wine

Fabulous  
Sunday Lunch Buffet

Full Afternoon Tea

Dinner & Grill Menu

7 Course Tasting Dinner



The Ideal Venue for  
Weddings & Celebrations

# **brown** Skips .com

## Your Local Skip Hire Company

BOOK ON YOUR SMART PHONE OR ONLINE FOR:

- ✓ Quick and easy 24/7 online reservation
- ✓ Our lowest rates
- ✓ Secure payment powered by WorldPay
- ✓ Next day delivery and excellent service
- ✓ Skips from 4 to 40 yard available
- ✓ Local authority skip licenses



### We recycle more...

A303 Materials Recovery Facility, Barton Stacey, SO21 3QS

 **01264 720 257**

\* Offer available until 31<sup>st</sup> December 2016 online only using our brownskips.com website. Standard terms & conditions apply.

**SMANNELL PARISH**  
**OFFER**

**£5<sup>+VAT</sup> OFF**  
**SKIP HIRE\***

**OFFER CODE: SMANNELL**



Homing Enquiries 0345-2601501 or [andovercats.org.uk](http://andovercats.org.uk)  
Fund-raising & volunteers 0773-242196 or

[coord@andovercats.org.uk](mailto:coord@andovercats.org.uk)

Items for resale

01256-892773

In 2016 we took in and re-homed 122 cats and kittens, a fraction of the number that passed through our hands ten years ago. This is partly due to fostering capacity but a lot of blame can be placed on the social media where cats are passed freely from home to home, and kittens, most of which have never seen a vet, are sold for exorbitant sums. Cats Protection are often asked to pick up the pieces from these transactions. We ask £60 for a cat/kitten but it will be in good health, vaccinated, micro chipped and neutered (in the case of a kitten we will do this when it reaches the appropriate age).



Fund raising is slow at the moment due to the lack of an organiser but we shall be back in the Whitchurch Charity Shop in March.

Last month's cat Betsy has, at last, found a home.

Dotty is a grey and white, very friendly, young cat who came to us as a stray and has been in care since September. She loves attention, but as we don't know her background, would probably prefer to be an only cat.

2022

## THE OAK

*Valentine's Day*

A three course meal for 2 with  
a glass of bubbly on arrival.

£54.95 per couple.

Book now to avoid disappointment.

[www.theoaksmannell.com](http://www.theoaksmannell.com)  
01264363075  
[theoak@email.com](mailto:theoak@email.com)



# ARBORICULTURE Specialist



- All aspects of tree work
- Stump Grinding
- 24 Hour Emergency Call Out
- Logs For Sale  
(seasoned hardwood)
- Top-Soil For Sale
- Digger/Operator Hire (good rates)
- Fencing  
(domestic & commercial)



01264 735609  
07824 178242

[tree.styler@hotmail.co.uk](mailto:tree.styler@hotmail.co.uk)



## HARMSWORTH'S

Andover's Premier Supplier Of "Preloved" Furniture

"NEW SHOWROOM IN ENHAM ALAMEIN"

Check Out Our New Website

[www.usedathome.co.uk](http://www.usedathome.co.uk)

Tables, Chairs, Sofas, Single Chairs, Chest of Drawers,  
Bedside Chests, Wardrobes, Display Cabinets, Beds,

Enough To Furnish A Whole House!



We have been dealing in preloved/slightly used furniture for nearly 3 years and have built up a solid and dependable service. Viewing is easy and by appointment. House Clearances also undertaken at a very reasonable rate.

Please contact: Miles Harmsworth on 07594 800998

# Your **Complete** solution

## YOUR COMPLETE SOLUTION

Following the recent acquisition of JB Motors, we now offer everything you need to keep your car on the road: all provided by qualified technicians that you can trust.

- MOT
- SERVICE & REPAIRS
- BODYWORK
- HEALTH CHECKS - (AVOID THOSE WINTER BREAKDOWNS)
- DIAGNOSTICS
- TYRES, EXHAUSTS, BATTERIES
- AIR CONDITIONING
- COURTESY CARS AVAILABLE UPON REQUEST
- FREE COLLECTION & DELIVERY (SP9, SP10 & SP11 POSTCODES)
- MOD STAFF DISCOUNT. 10% ON MOT'S & SERVICING

**jb**motors

a part of the **bp**rolls  
GROUP

Tel: 01264 335 801

Web: [www.jbmotorsandover.co.uk](http://www.jbmotorsandover.co.uk)



# Satellite & aerial



## Satellite & Aerial:

- TV Aerial Installations and Repairs
- Sky Satellite Installations
- Freeview & FreeSat
- FM & DAB Radio Installations
- Extra TV, Satellite & Telephone points
- Commercial (IRS, CCTV)
- European & Motorised

## Sound & Vision:

- Home Entertainment Systems
- Home Cinema
- Multi Room Audio Visual Installations
- LED, LCD, Plasma TV's & Projectors
- Home Automation Systems
- Lighting Control
- Commercial

For a friendly and professional service please call 01264 324 224,  
email [info@onedegreewest.tv](mailto:info@onedegreewest.tv) or visit [onedegreewest.tv](http://onedegreewest.tv)



**one degree west**  
satellite & aerial

# Keeping your home & business secure

One degree west security services are a leading provider of intruder alarms, CCTV systems and door entry systems for homes and businesses. Our state-of-the-art home security systems include wireless house alarms, security cameras & intercom systems.

## Intruder alarms:

Intruder alarms to protect homes & small businesses. We provide both hard-wired and wireless burglar alarms.

## CCTV Systems:

CCTV systems for home surveillance and commercial security including remote viewing via internet and smartphones.

## Access Control:

Door entry systems / Access Control including keypad and intercom systems for residential and commercial properties.

For a friendly and professional service

01264 324 224

[info@onedegreewest.tv](mailto:info@onedegreewest.tv) // [www.onedegreewestsecurity.co.uk](http://www.onedegreewestsecurity.co.uk)

**one degree west**  
security services