



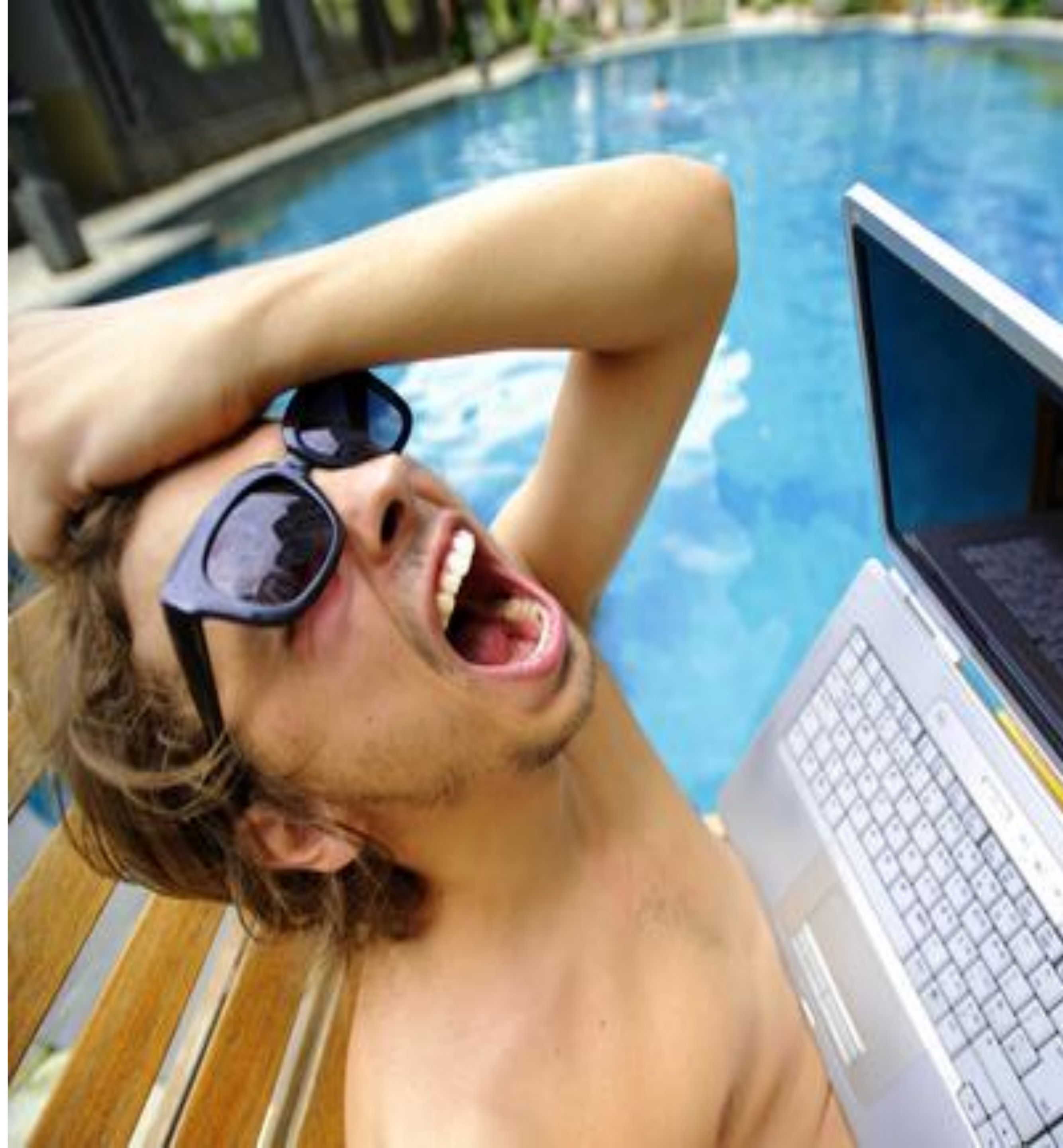
SMART CITIES | SMART BUSINESS | SMART TECHNOLOGY

The \$14 Trillion Problem: Smart Cities Meets IoT

Integration requires Real-World Design, Hardware Application, and Software Infrastructure to Work

- Physical locations often aren't set up to communicate with virtual users
- Physical locations do not have proper technology in place
- Enterprises don't have expertise to manage various technology or cloud applications
- There is no solution to manage multi-location enterprises
- Enterprise management requires immediate access to data analytics and engagement that they often never get to deploy

- *Accenture estimates of \$14.2 Trillion by 2030



Green Zebra

The ONLY Services + Technology that Align IoT and Infrastructure.



Smart Software

Our Global Cloud Management handles thousands of location venues or city infrastructures and millions of user data records



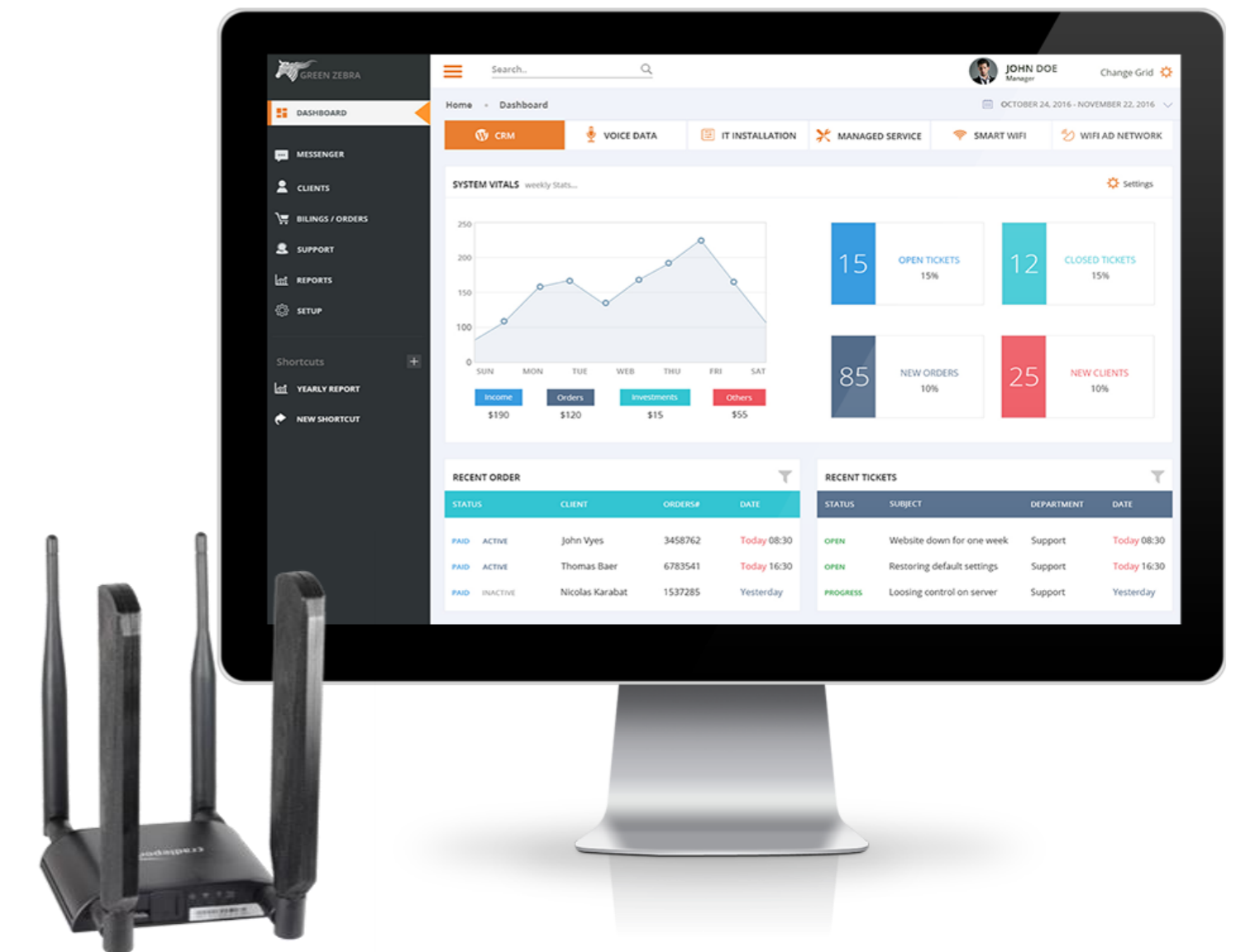
Smart Technology

A neutral IoT Data, Analytics, Management and Marketing Platform for multi-device, multi-locations & Smart Cities.



Smart Businesses

We are the premier IoT analytics solution for clients processing 50,000,000 interactions per month.



White label partner support AVAILABLE



Multiple Revenue Streams

Wireless Revenue opportunities



Wireless Consulting

- Cities
- Multi-Location Enterprise
- Innovation Partners

White Label Resellers

- International Partners
- USA Resellers
- Global sales Agents

Smart Wireless Data / Hardware

- Strategic Partners
- Strategic Venders
- Installation Partners

Smart WiFi License

- Annual Subscriptions
- Anuall Support Agreements

Percentage of Revenue

10%

20%

30%






40%

WiFi Media Advertising Network

This channel will become the single largest revenue opportunity for Green Zebra by 2020

Service Locations



-  **Orange County CA**
USA
-  **Miami FL**
USA
-  **Boston MA**
USA
-  **Cancún QR**
Mexico
-  **Valencia**
Spain

Worldwide Strategic Partners

Green Zebra has more than 200 experienced strategic partners worldwide to get the job done.



WHAT OUR STRATEGIC PARTNERS ARE SAYING

“Green Zebra brings a unique business model. Cities everywhere are looking for ways to fund smart city initiatives and Green Zebra provides a way to get that done.”

– Steve Wimsatt, Sr. Director Strategic Alliances at Ruckus Wireless



“Green Zebra’s business model & Technology provides new opportunities for Cradlepoint to better reach and support new customers and we are intrigued with the possibilities of their Smart City initiative. This strategic partnership can help pave the way for enterprise businesses and cities to be well positioned for the future and the Internet of Things.”

– Susan Marx, Field Sales Director at Cradlepoint



Prospects & Customers

WiFi MEDIA ADVERTISING OPPORTUNITY
WiFi REACH HITS 300 MILLION MOBILE CONSUMER DEVICES MONTHLY



Green Zebra Team



More than 100 years combined developing and managing business processes and technology



Coleman Smith
CEO

—
25 years technology entrepreneur,
telecom cloud technologies



Kimberly Civita
Vice President

—
20 years experience, project
management



Lenny Nuccio
Human Resources

—
20 years experience
Operations



Jim Sacassico
VP Operations

—
25 Years experience in web
application development

Our Advisory Board



*Green Zebra's advisor board offers more than 100 years of combined development, business management and technology.
Names available upon request.*

Cellular

Verizon
T-Mobile

Voice Data Fiber

Telefonica
Hotwired Comm

IT- Hardware - Design

Cisco
Ruckus

Installation

Robert Half
IT Reliable

Software

Apple
Bacancy Tech

Financial

Fresnal
Roth Capital

Agency Marketing

Value Click
G2

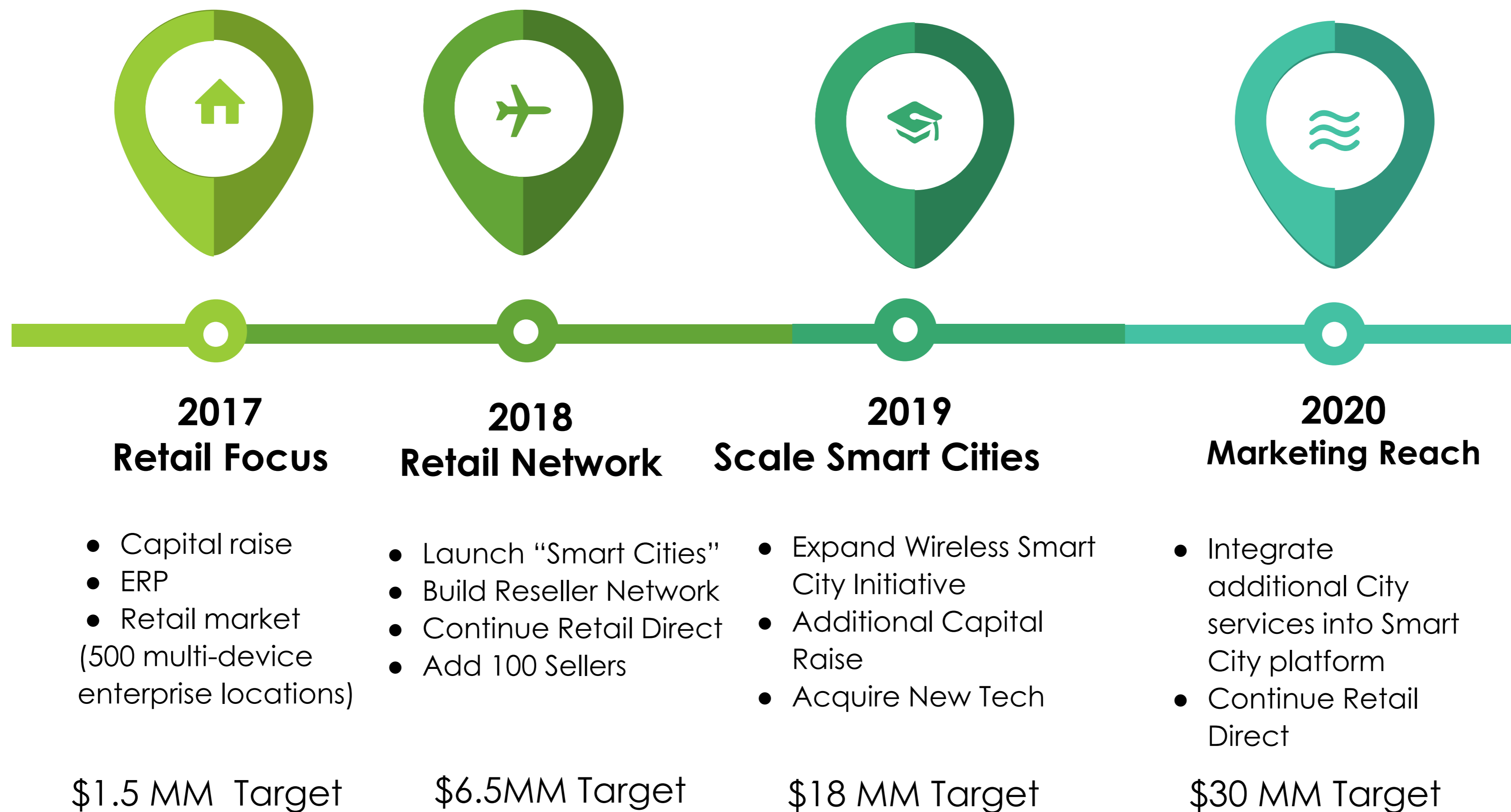
Retail

Normstum
Under Armor

Market Opportunity and Key Numbers



Green Zebra Revenue Timeline



Financial Projections



	2016	2017	2018	2019	2020	
Total Revenue	\$540,000	\$1,500,000	\$6,500,000	\$18,000,000	\$42,000,000	
Net Profit	\$25,000	\$500,000	\$2,300,000	\$6,500,000	\$20,000,000	

Use of Funds



We are seeking up to \$1M in a secured loan, with a guaranteed 10% interest rate. The principal is to be repaid within 60 months, at an ROI of \$500,000. Below is a breakdown of our planned use of funds



Project Management Implementation

Staff up our technical, and IT network teams for multi-location deployments and implementation plans.



CRM / Enterprise Resource Platform

Release our beta management platform a long side our completed multi-location smart wifi platform.



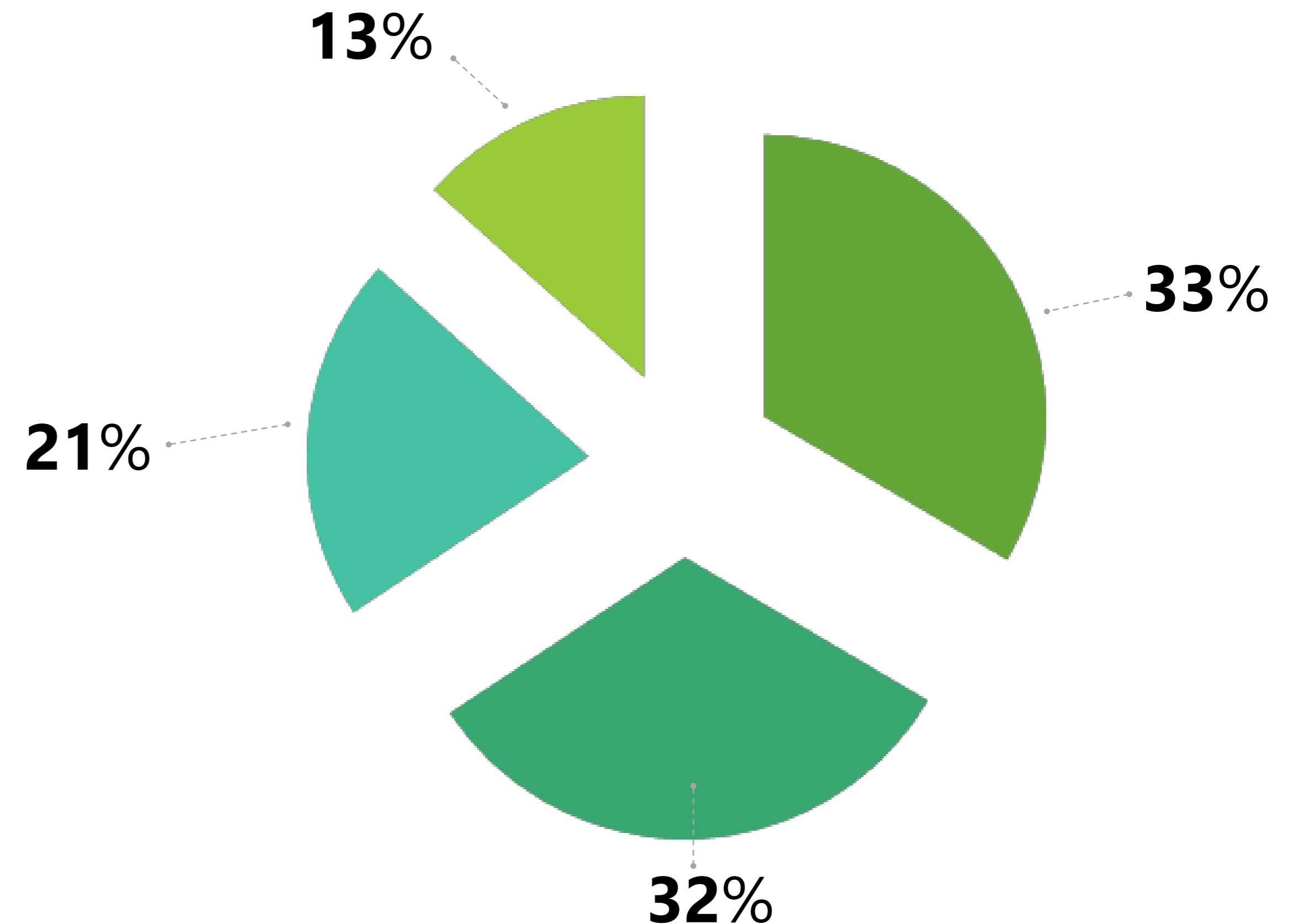
Support Staff

We will hire and train additional platform staff to help us retain existing clients and support field sales reps.



Legal Expenses

These funds will be used for legal initiatives involving smart Cities and Multi – location opportunities.



Our Vision & Model for Smart Cities

- The concept and model of smart cities is a progressive state of urban living.
- The Internet of Things (IoT) evolved from our ability to turn everyday objects into computing devices (from a thermostat to an elevator).
- IoT is at the heart of the approach Green Zebra uses to transform municipalities into Smart Cities.
- We are in the process of implementing the technology to make the City of Doral, Florida a Smart City; and more to come.



CREATIVE TEAM PROFILE
Placeholder of content in this area, right temp temp. Placeholder of content in this area, right temp temp. Placeholder of content in this area, right temp temp. Placeholder of content in this area, right temp temp.

AMAZING PORTFOLIO
Placeholder of content in this area, right temp temp. Placeholder of content in this area, right temp temp. Placeholder of content in this area, right temp temp. Placeholder of content in this area, right temp temp.

GREAT BLOG DESIGN
Placeholder of content in this area, right temp temp. Placeholder of content in this area, right temp temp. Placeholder of content in this area, right temp temp. Placeholder of content in this area, right temp temp.

AWESOME SUPPORT SERVICES
Placeholder of content in this area, right temp temp. Placeholder of content in this area, right temp temp. Placeholder of content in this area, right temp temp. Placeholder of content in this area, right temp temp.

EASY TO CUSTOMIZE
Placeholder of content in this area, right temp temp. Placeholder of content in this area, right temp temp. Placeholder of content in this area, right temp temp. Placeholder of content in this area, right temp temp.

FULL SHORTCODES READY
Placeholder of content in this area, right temp temp. Placeholder of content in this area, right temp temp. Placeholder of content in this area, right temp temp. Placeholder of content in this area, right temp temp.

“Our Service is the best network with free city Wi-Fi nationwide!”



2017

First project: Doral, Florida



2018

Build network of Smart City partners



2019

Comprehensive Smart City roll out, worldwide



2020

Partner with Smart Cities to attend to their evolving needs

Contact Information



Address:

Green Zebra
Laguna Hills, CA 92653

Phone & Fax:

Direct Line: +1 (800) 777.3562
Fax: +1 (949) 209.5814
support@greenzebramedia.com

Social Media:

www.facebook.com/GreenZebra/
[Twitter.com \(@greenzebratv\)](https://twitter.com/@greenzebratv)
www.linkedin.com/in/wmcolesmith/

THANK YOU



Who is Green Zebra?

In 2014, Green Zebra was created by the founder to focus on the IoT wireless industry, The business began out frustration to manage thousands of simultaneous wireless vender locations, wifi devices and the need for a multi location management & analytics platform to monitor wifi devices and manage millions of wifi user analytic records.

It was quickly realized that not only was the industry broken, the wireless industry was new, and IT network providers offer little product or marketing value to the stakeholders the services.

This didn't make sense; Green Zebra decided to become the wireless leader and first to market wireless managed marketing and data analytics platform for multi-location venues and Smart Cities that requires a secure wireless infrastructure for the future of IoT devices.

Our resell partners range from small local IT shops & marketing agencies to big brand Telco's around the world.



Market Opportunity and Key Numbers



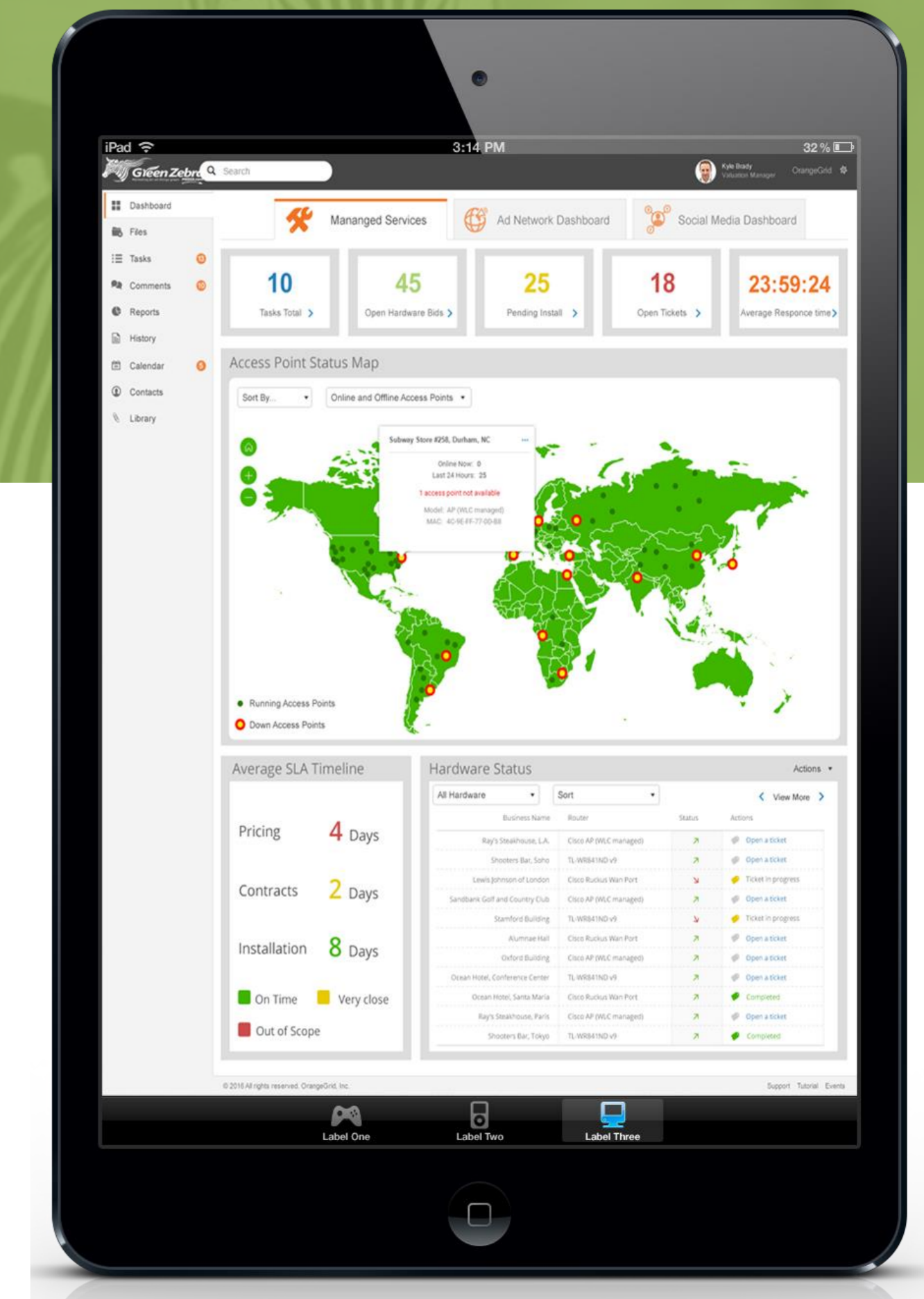
Below are examples of realistic individual revenue models for Green Zebra in 2017.

Wireless Retail Sales	No. Locations / Terms	Timeline	Revenue Streams 2017
Subway Basic Pack \$999 ea.	300 1 Time Payment	4 Week / Complete install	\$299,999 One Time Fee
* 12-Mth Subscription Fee \$99	300 3 Years	12 Month Billing	\$356, 400 yearly residual
* Cox Business Data \$150 Mthly	300 3 Years	12%/ 12 months	\$64,800 yearly residual
Ingles Grocery Multi -Pack 15k ea	50 locations @ 15k ea.	4 Week / Complete install	\$750,000 One Time Fee
* 12-Mth Subscription Fee \$300	50 3 years	12 Month Billings	\$180,000 yearly residual
* Cox Business Data \$400 Mthly	50 3 years	12%/ 12 months	\$28,800 yearly residual
2017 Revenue Totals	350 Total Locations	Gross Revenue 2017	\$1,679,999

The above accounts are in the quoting stages for 1st or 2nd quarter 2017. we used an assumption that it will 12 months to complete. This is a sample of accounts we have been working on 4th quarter 2016. We also have reseller agreements in place with all the telecom carriers to get the best pricing for our client. We will receive residual monthly payments on all telecom voice and data services.

Exceptional Customer Service

- ✓ We're your one-stop-shop for all your smart network solutions.
- ✓ A single point of contact ensures a smooth project experience.
- ✓ We have your best interests in mind; we won't sell you a system you don't need.



Flexible

We partner with you to understand your long and short-term goals, and address any changes over time.



Integrated

A Critical Customer Care expert provides one point of contact to support your project from start to finish.



Unlock Opportunities

We listen first, and act second. Whether you need from a new system or to fill a gap.

WHAT OUR STRATEGIC PARTNERS ARE SAYING

- ✓ We customize your hardware solution to meet your needs.
- ✓ We tackle single and multi locations — even “Smart Cities”
- ✓ We won’t sell you something you do not need.



Flexible

From design to installation, Green Zebra will build the infrastructure, including voice & data broadband.



Integrated

From malls, to airports, to buses, and many more – Green Zebra integrates software connections to a variety of locations.



New Opportunities

Starting from scratch or strengthening your existing system? Green Zebra will work with you to develop what you need.



A Better User Experience

- ✔ Our cloud-based software is agile, allowing you to scale anywhere, anytime.
- ✔ We make data gathering and insight collection seamless.
- ✔ Unlock new ways to monetize your user traffic.



Flexible

Our cloud-based software is nimble, helping you manage what's most important to your business.



Integrated

From monitoring analytics, to maintenance and marketing.



New Opportunities

We can help you monetize your web traffic through initiatives that drive sales up to 4x*

*Message Envy Case Study.

Green Zebra Sales Teams



- *Green Zebra Direct Sales teams.
- *Field supported teams Sells Green Zebra Wireless solutions with existing telecom services
- *Support office in Irvine Ca., provides technical support, quoting and wireless manage for retail clients

