
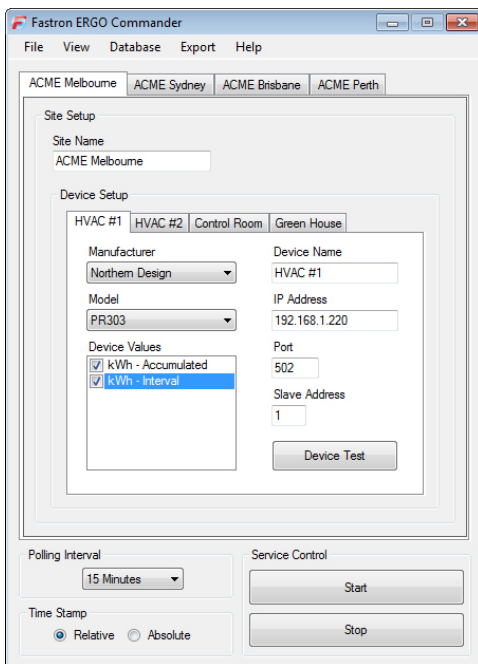


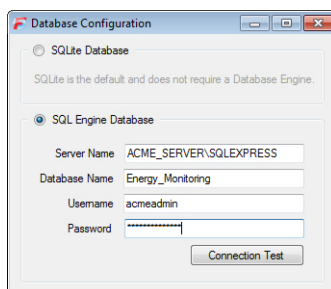
Monitor all of your Gas, Power & Water Devices in the field*
Readily integrate logged data into existing Building Management Systems

 The **Fastron ERGO Commander Plus** is an easy to use cost effective program for data retrieval and real-time monitoring of Modbus TCP/RTU* devices. The software is fully scalable and allows you to easily log and concentrate data from multiple sites across a wide range of sensors, meters and devices.

The ERGO Commander is a lightweight application driven by Microsofts .NET Framework and is capable of running on most x86 based systems in operation today. Fully tested with Windows XP, Vista, Windows 7, Server 2003 & Server 2008.



Multi-Site/Multi-Device Configuration



SQL Engine/SQLite Database Configuration

Overview - ERGO Commander Plus+

- Monitor Modbus TCP/RTU** Devices in the field
- Windows Service application
- Log large amounts of data
- Concentrate data from multiple sites and devices
- Email and distribute data logs to multiple recipients
- Interface with existing building management and database systems
- Export in CSV (Comma Delimited) Files
- Export data-files to a shared resource
- Full SQL Server support
- Optional stand-alone no-fuss operation utilising an SQLite database
- Small Foot-print with diverse compatibility
- Easy to use and configure
- Adjustable Polling Interval
- Optional Auto-adjusting Timestamps for ease of Charting

Compatible with:



Note: The ERGO Commander series of software is continually evolving with new features and functions so please contact Fastron's sales team for free quote if you require a custom solution or feature not included within this documentation.

*Compatible with any Modbus TCP or RTU Device

**Modbus RTU Compatibility provided via a hardware interface

FASTRON TECHNOLOGIES PTY LTD

25 Kinglsey Close Rowville, Melbourne, Victoria, Australia 3178

ABN 73 060 060 308

Tel: +613-9763 5155
Fax: +613-9763 5166

Email: sales@fastron.com.au
Web: www.fastron.com.au