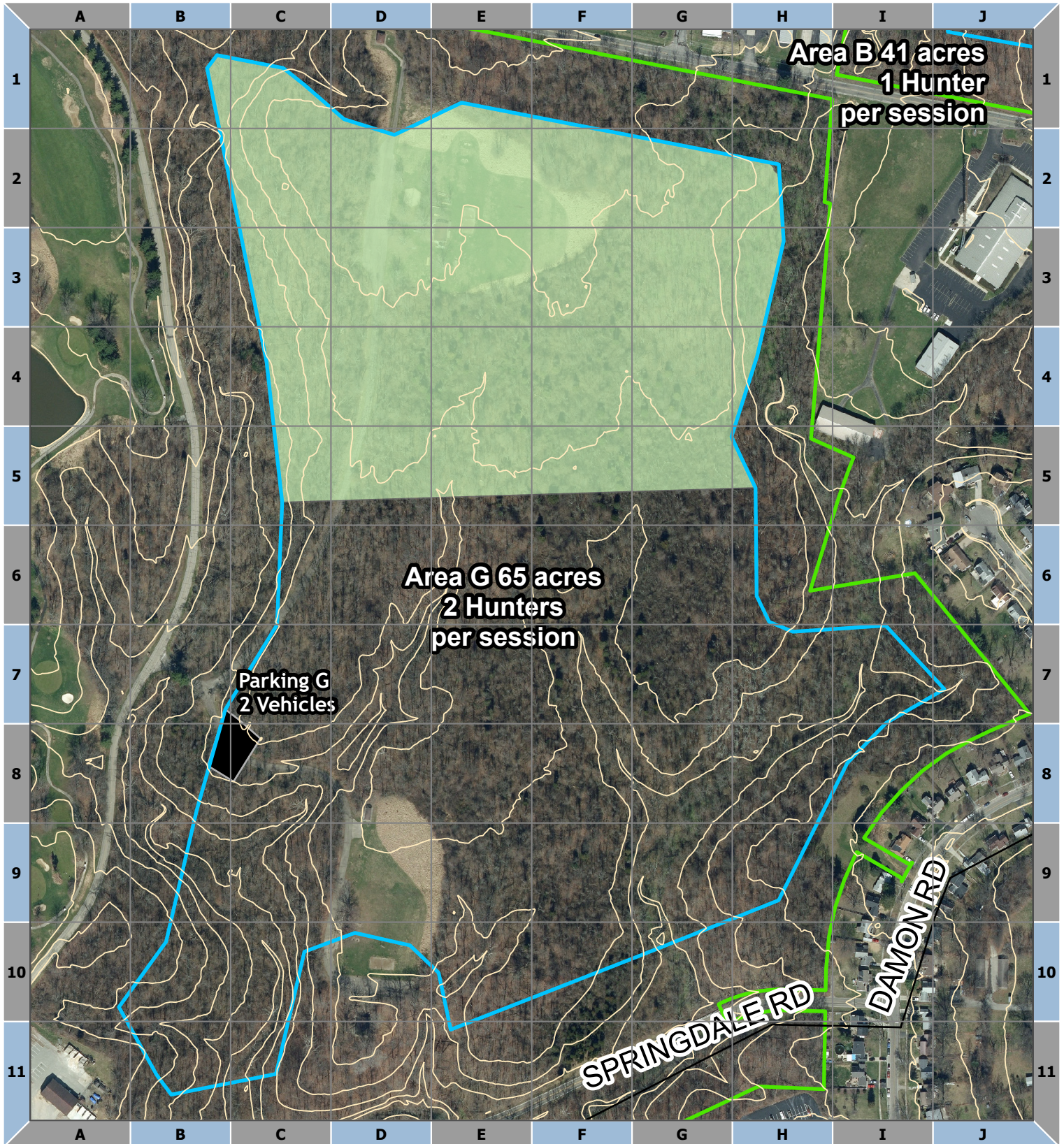



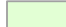
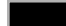

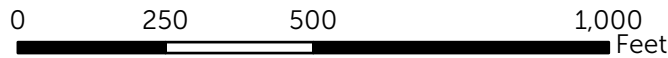


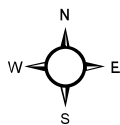
Winton Woods Area G



-  Topography
-  Bow Hunting Areas
-  GPHC Boundary
-  Honeysuckle 2021
-  Bow Hunting Parking
-  Trails



1:3,898



Coordinator:
 Brad Box
 (513)502-7189
 bbox.hcpd@gmail.com

*Maps are subject to change
 but will be finalized before qualifications