



Our Cooperative

San Miguel Electric Cooperative is an electric cooperative based in Christine, Texas. Our power plant and its nearby lignite mine produce 391 megawatts of affordable, reliable electricity for our nine member cooperatives across 42 South Texas counties. As a small, rural and member-owned organization, San Miguel Electric Cooperative provides a reliable source of power to hundreds of thousands of Texans, ensuring the stability of a well-functioning power grid and supporting the agricultural economy of South Texas. We invest heavily in advanced technology to monitor and minimize emissions from our power plant and are proud to have been recognized for our stewardship efforts with multiple environmental achievement and conservation awards.



Safe, reliable and affordable power generation



Award-winning environmental achievement



We are a good neighbor in south Texas

Our culture

At our core, we excel at problem-solving and finding solutions. That's the foundation upon which our cooperative was built, as we provide safe, reliable power generation to South Texans.

We take great pride in our people, and they take great pride in their work. Our employees do in-house what most other power generators outsource to others. Our employees know they have the freedom to pursue innovative ideas and solutions and will be rewarded for their initiative and work ethic. In fact, many of our employees have spent their entire careers working for the cooperative. That says a lot about our company and our culture.

The safety of those employees and the community at large is also paramount to us. San Miguel strives for constant improvement through safety training and awareness programs that ensure compliance with regulatory standards.

San Miguel Electric Cooperative is committed to maintaining a dependable power supply at the lowest possible and competitive cost to our customers through integrity, hard work and safety.

391

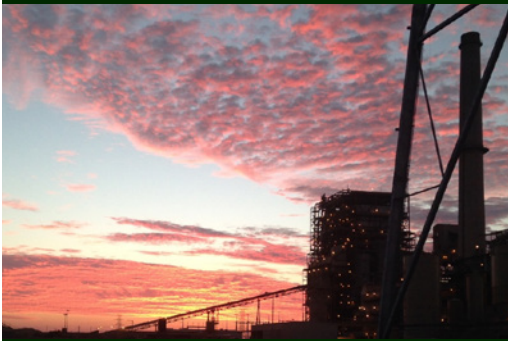
Megawatts generated

42

Texas counties served

78K+

Texas homes powered



Our economic impact

According to the Texas Mining and Reclamation Association, Texas lignite coal mining and coal-fired electric power generation have an annual economic impact of more than \$7 billion.

As an industry, this activity supports (as of 2015, the most recent year available):

- 24,290 jobs
- \$1.8 billion in salaries, wages and benefits
- \$690 million in annual revenues from coal-related activities directed to state and local taxing jurisdictions

Texas lignite coal facts

- Lignite coal is a stable, abundant and affordable source of electricity
- Texas is the largest lignite coal producer in the nation
- Texas is the largest lignite coal-consuming state in the nation
- More than 30% of the energy produced in Texas comes from lignite coal

Source: U.S. Energy Information Administration (EIA)

Contact:

6200 FM 3387
Christine, TX 78012
Phone: (830) 784-3411
E-mail: sanmiguel@smeci.net
www.smeci.net

Our community

Caring for our neighbors, who are also our customers, is important to us. That's because we not only work, but also live, in the rural areas in which we operate and serve. Our employees volunteer their time to the causes they care about the most and work hard to make a difference. One of the ways we serve the community is by giving our time to local organizations, such as The South Texas Ramp Project, Wounded Warrior Project, Court Appointed Special Advocates and many more.

We also give where there is a need, making financial contributions to charitable organizations that are located within Atascosa and McMullen Counties.

Our commitment

San Miguel's commitment to the environment and to the communities in which we operate runs deep. We have spent more than \$125 million on environmental controls since our power plant opened in 1982. Our industry is one of the country's most scrutinized, yet San Miguel Electric Cooperative continues to thrive because of our pledge to minimize the impact on the environment.

Federal and state regulations require us to restore areas disturbed by our operations. We regularly meet and exceed many of these requirements on our reclaimed properties and have even been recognized by local and regional organizations for our efforts. We take pride in our environmental specialists, who are highly educated experts well-versed on the regulations and the science behind mining and power generation. They constantly review and improve our operations, with the goal of protecting the environment and providing value for landowners, as well as serving as a model for conscientious environmental leadership.

Our impact

We contribute in many ways to the local, regional and state economies. We provide jobs to more than 498 people, which is more than \$40 million in payroll annually, at our mining and power facilities and contract with dozens of contractors. Indirectly, we support another 1,200 regional jobs. In turn, the people in those jobs support rural communities that need help the most.

In terms of taxes, we contribute approximately \$1.8 million a year in local taxes, with an additional \$3 million in payroll taxes. Over the last 30 years, we have added more than \$100 million in property, school and county taxes to the local economies. In addition, San Miguel provides more than \$68.7 million in payments to the state's economy. The power plant and mine support numerous other businesses, further enhancing the state and local tax base.

About Us

San Miguel Electric Cooperative, Inc. is a member-owned mining and power generation cooperative that serves the people of Texas' rural communities, working and living in partnership with its members. Through integrity, hard work and a commitment to safety, San Miguel maintains a dependable power supply at the lowest possible and competitive cost.

